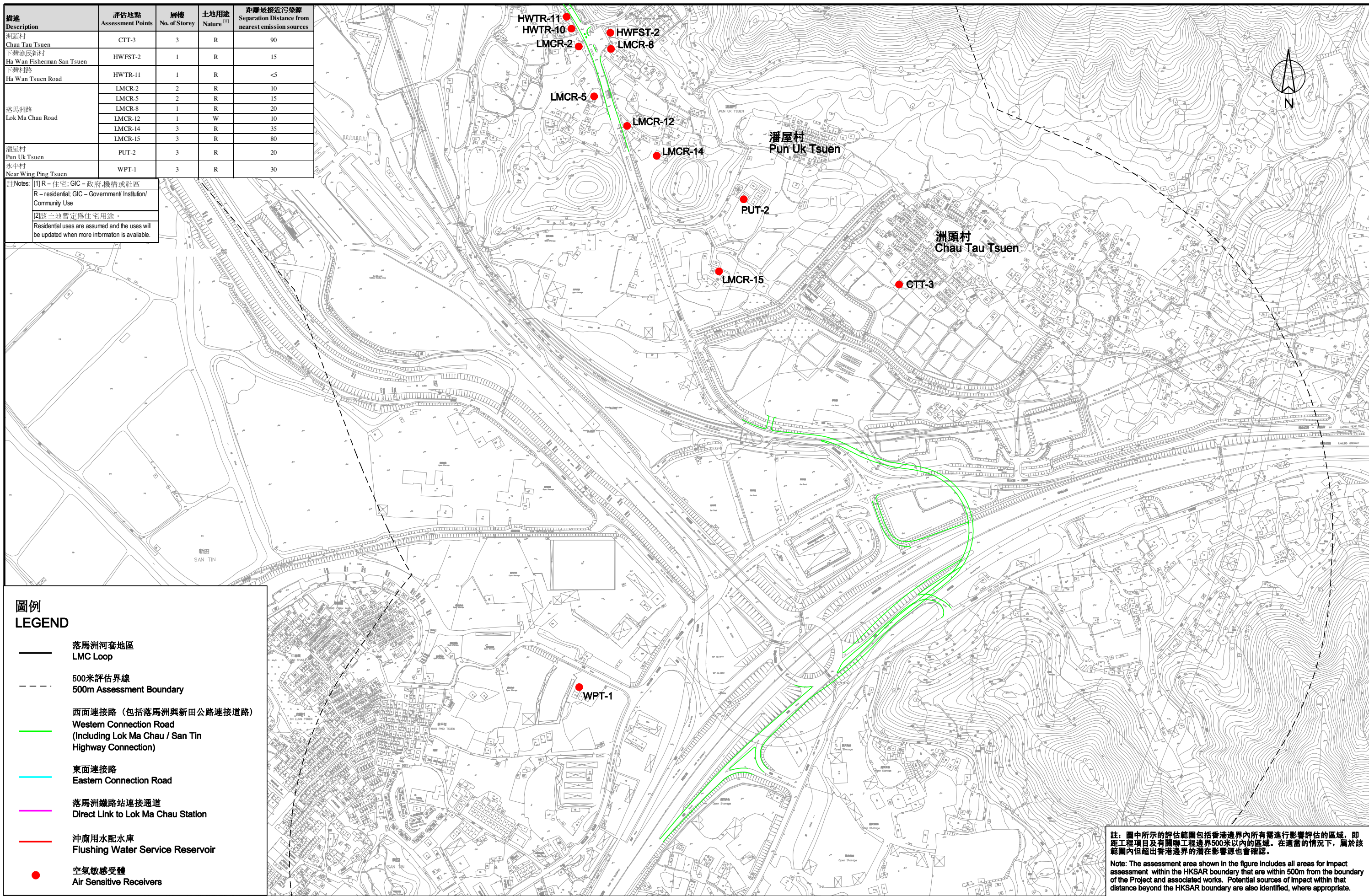


描述 Description	評估地點 Assessment Points	層樓 No. of Storey	土地用途 Nature <sup>(1)</sup>	距離最近污染源 Separation Distance from nearest emission sources
洲頭村 Chau Tau Tsuen	CTT-3	3	R	90
下灣漁民新村 Ha Wan Fisherman San Tsuen	HWFS-2	1	R	15
落馬洲路 Lok Ma Chau Road	HWTR-11	1	R	<5
	LMCR-2	2	R	10
	LMCR-5	2	R	15
	LMCR-8	1	R	20
	LMCR-12	1	W	10
	LMCR-14	3	R	35
潘屋村 Pun Uk Tsuen	PUT-2	3	R	20
永平村 Near Wing Ping Tsuen	WPT-1	3	R	30

註Notes: [1] R - 住宅; GIC - 政府、機構或社區  
R - residential; GIC - Government/Institution/Community Use  
[2] 該土地暫定為住宅用途。  
Residential uses are assumed and the uses will be updated when more information is available.



**圖例  
LEGEND**

- 落馬洲河套地區  
LMC Loop
- 500米評估界線  
500m Assessment Boundary
- 西面連接路 (包括落馬洲與新田公路連接道路)  
Western Connection Road  
(Including Lok Ma Chau / San Tin Highway Connection)
- 東面連接路  
Eastern Connection Road
- 落馬洲鐵路站連接通道  
Direct Link to Lok Ma Chau Station
- 沖廁用水配水庫  
Flushing Water Service Reservoir
- 空氣敏感受體  
Air Sensitive Receivers

註: 圖中所示的評估範圍包括香港邊界內所有需進行影響評估的區域, 即距工程項目及有關聯工程邊界500米以內的區域。在適當的情況下, 屬於該範圍內但超出香港邊界的潛在影響源也會確認。  
Note: The assessment area shown in the figure includes all areas for impact assessment within the HKSAR boundary that are within 500m from the boundary of the Project and associated works. Potential sources of impact within that distance beyond the HKSAR boundary are also identified, where appropriate.



研究項目 Job Title  
合約編號 Agreement No. CE 53/2008 (CE)  
落馬洲河套地區發展規劃及工程研究 - 勘查研究  
Planning and Engineering Study on  
Development of Lok Ma Chau Loop - Investigation

圖則項目 Title  
**現存及擬建的空氣敏感受體位置 (頁一)**  
Locations of Existing and Planned Air Sensitive Receivers (Sheet 1 of 4)

圖則編號 Figure No.  
**3.2a**  
圖則 Scale  
1:5000 ON A3  
修訂編號 Rev. -