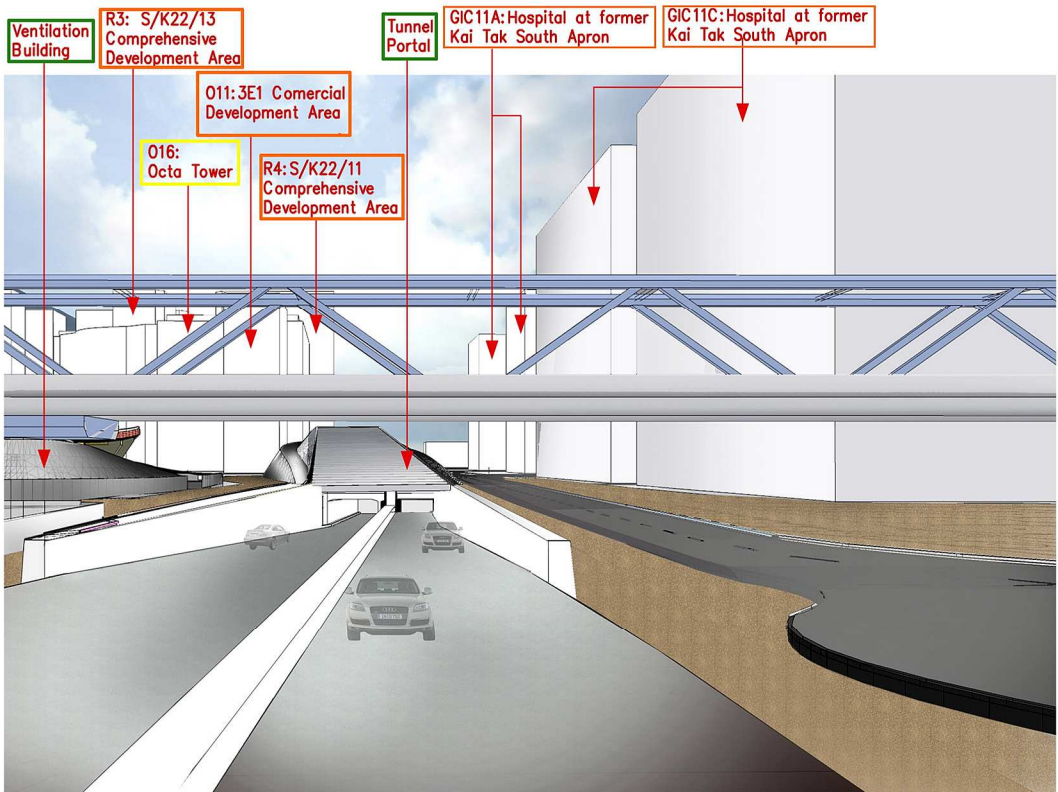


- TRUNK ROAD T2 + ASSOCIATED BUILDINGS
- PROPOSED DEVELOPMENTS BY OTHERS
- EXISTING DEVELOPMENTS

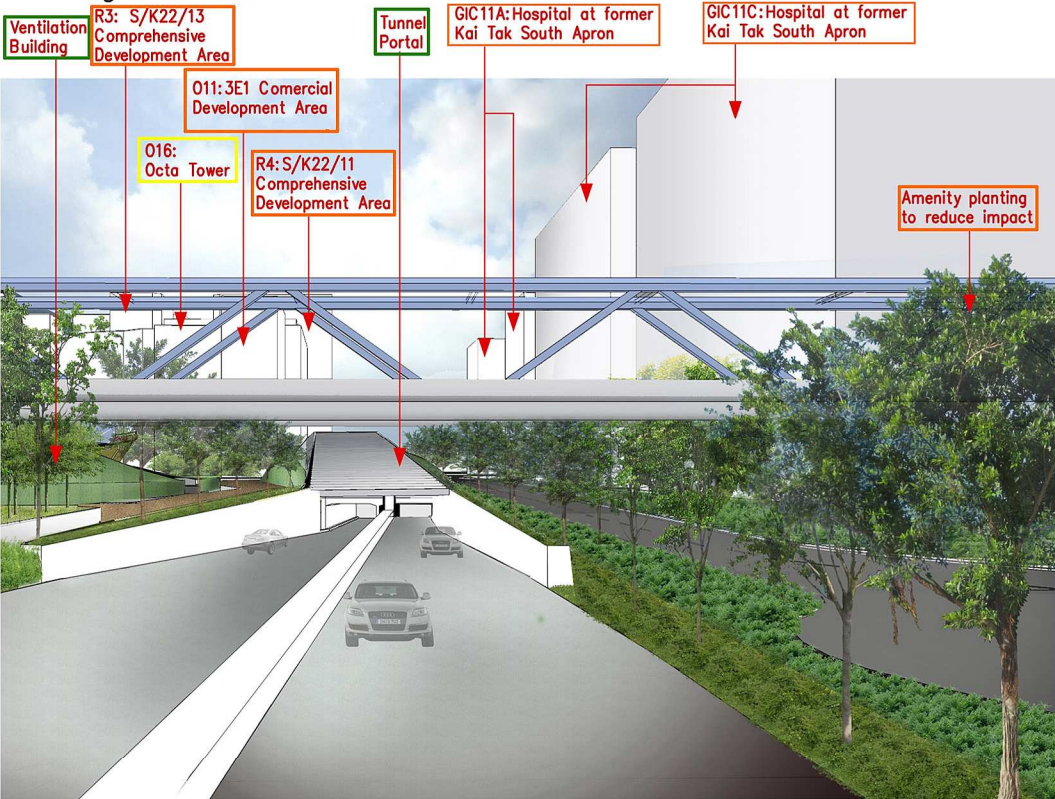
Please note: The future Kai Tak development does not form part of the Trunk Road T2 Project and is not for approval under this EIA submission. The information shown within these photomontages is indicative and provided to show the Trunk Road T2 & associated buildings in context with the surrounding area.



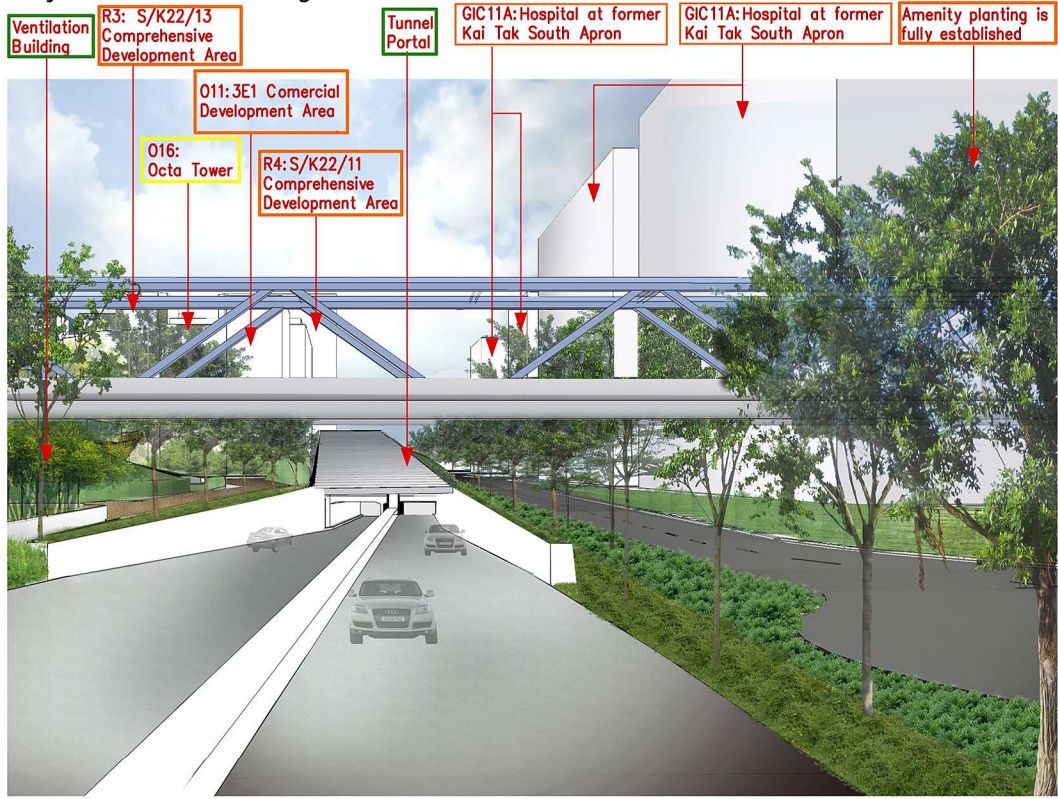
Existing Condition



Day 1 without Mitigation Measures



Day 1 with Mitigation Measures



10 Years with Mitigation Measures

Drawing title

View Point No. 2 Photomontages –  
Trunk Road T2 & Road L18

Original Size

A3

Scale NTS

Date 24/JUNE/2013

File name

Figure 9 17 2.dgn

© Copyright reserved

Drawing No.

Figure 9.17.2

Rev.

C

Rev.	Description	Date
------	-------------	------