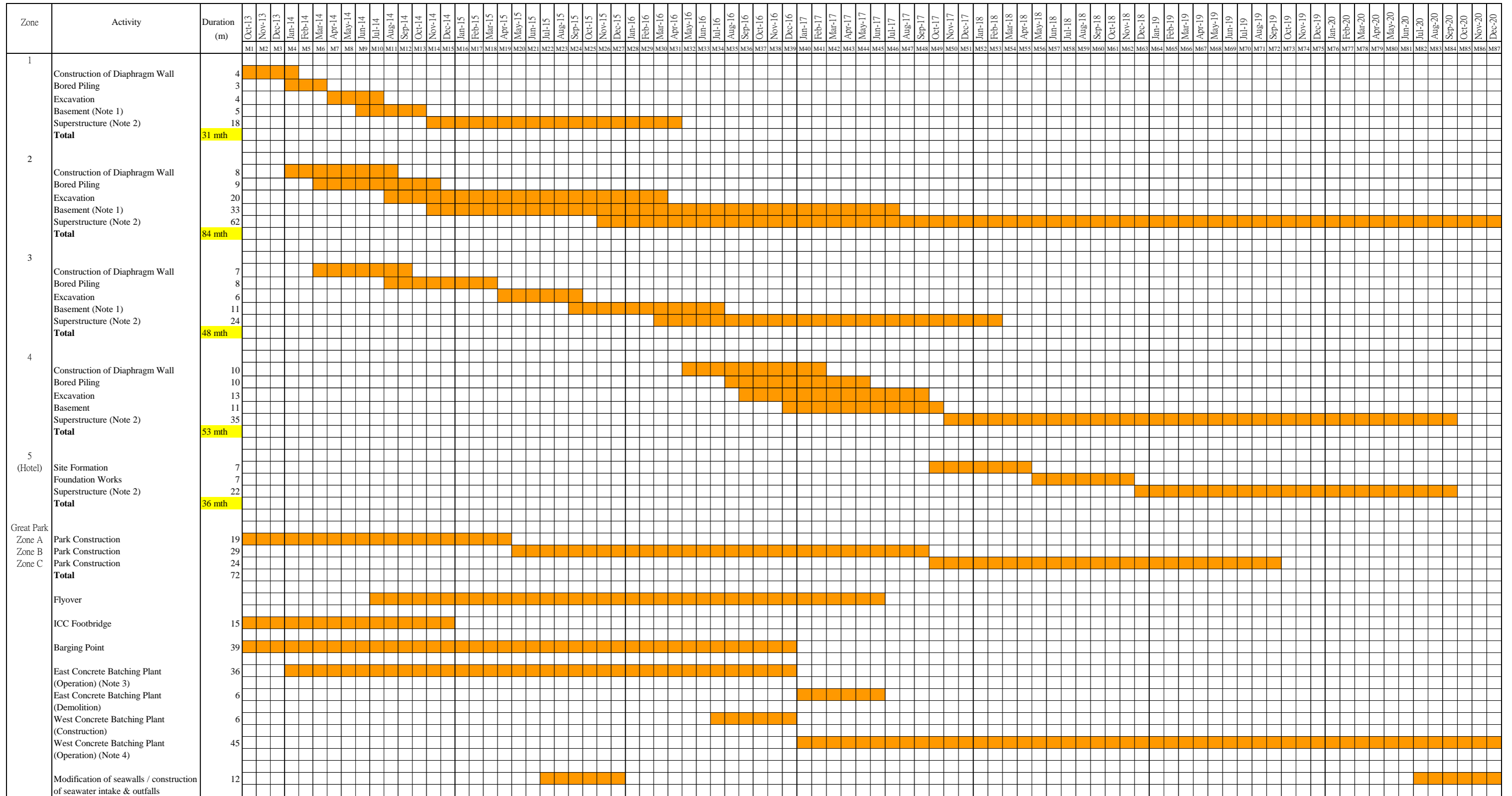


Appendix 2.4 - Tentative Construction Programme



Note:

- Basement construction includes underpass roads.
- Superstructure construction includes concrete works, building service & architectural builders works.
- Phase 1 Concrete Batching Plant in Environmental Review for Proposed West Kowloon Terminus Concrete Batching Facility will be handed over to WKCD starting from the year of 2014.
- Demolition of the West Concrete Batching Plant will within Year 2021 with a duration of 6 months.
- The construction of Anchorage Footbridge will begin after Year 2020.
- The construction of the possible piers and viewing platform is subject to the requirements of the Protection of the Harbour Ordinance (PHO) (Cap. 531) and therefore a programme is currently unavailable. Relevant assessments have included the construction of these two components in every year of the construction period until 2021 for worst case scenario.
- The relocation of TST fire station is assumed before 2025 and have a demolition period of half year. The construction of permanent underpass and relative superstructure development will be after the demolition period and with a duration around 3 years. Kowloon Park Footbridge will be started after all other WKCD construction works complete at 2030 with a duration around 2 years.

Assumption for Excavation:

- Assume 4 barging points with capacity of 1000m³/barge/day. (Barge size 50 to 60m in length)
- Assume normal dump truck capacity 5m³/run
- Assume big dump truck capacity 10m³/run (for internal use only).



- LEGEND:**
- - - PROJECT BOUNDARY
 - - - FOOTBRIDGE *
 - - - BASEMENT LEVEL ZONE
 - FLYOVER *
 - POSSIBLE PIER / VIEWING PLATFORM *
- GROUND LEVEL ZONE:-
- ZONE 1
 - ZONE 2
 - ZONE 3
 - ZONE 4
 - ZONE 5 (HOTEL)
 - ZONE A (THE PARK)
 - ZONE B (THE PARK)
 - ZONE C (THE PARK)
 - EXCLUDED AREAS

REMARK:
* INDICATIVE SUBJECT TO FUTURE DESIGN & ARRANGEMENT

P3	JUN 13	MING	GENERAL REVISION	AM	AFK
P2	MAY 13	MING	GENERAL REVISION	EY	AFK
P1	APR 13	MING	FIRST ISSUE	DC	AFK
Rev	Date	Drawn	Description	Ch'kd	App'd

Client
WEST KOWLOON CULTURAL DISTRICT AUTHORITY



20F Two Landmark East
100 How Ming Street
Kowloon, Kowloon
Hong Kong
T +852 2828 5757
F +852 2827 1823
www.mottmac.com.hk














Project
PROJECT CONSULTANCY STUDY FOR WEST KOWLOON CULTURAL DISTRICT DEVELOPMENT PLAN

Title
CONSTRUCTION ZONES

Designed	DC	Eng check	EC
Drawn	MING	Coordination	EC
Dwg check	DC	Approved	AFK
Scale at A1	1:2500	Status	PRE
Rev			P3

Drawing Number
APPENDIX A

