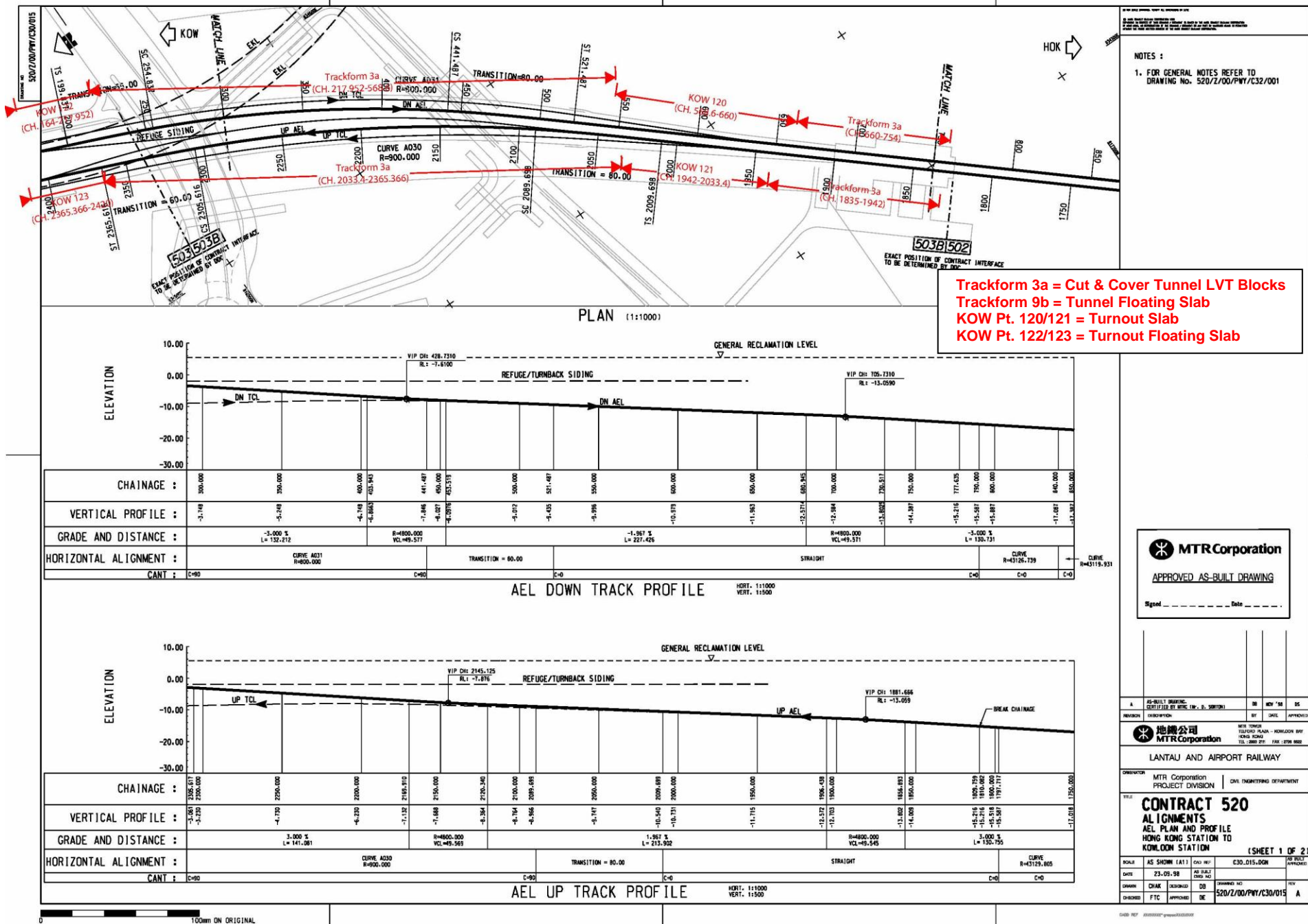


## **Appendix 4.12**

### Trackform Information of AEL/TCL at WKCD



# Appendix 4.12 - Trackform Information of AEL/TCL at WKCD



NOTES :  
 1. FOR GENERAL NOTES REFER TO DRAWING No. 520/2/00/PWY/C32/001

**Trackform 3a = Cut & Cover Tunnel LVT Blocks**  
**Trackform 9b = Tunnel Floating Slab**  
**KOW Pt. 120/121 = Turnout Slab**  
**KOW Pt. 122/123 = Turnout Floating Slab**

**MTR Corporation**  
 APPROVED AS-BUILT DRAWING  
 Signed: \_\_\_\_\_ Date: \_\_\_\_\_

**MTR Corporation**  
 LANTAU AND AIRPORT RAILWAY

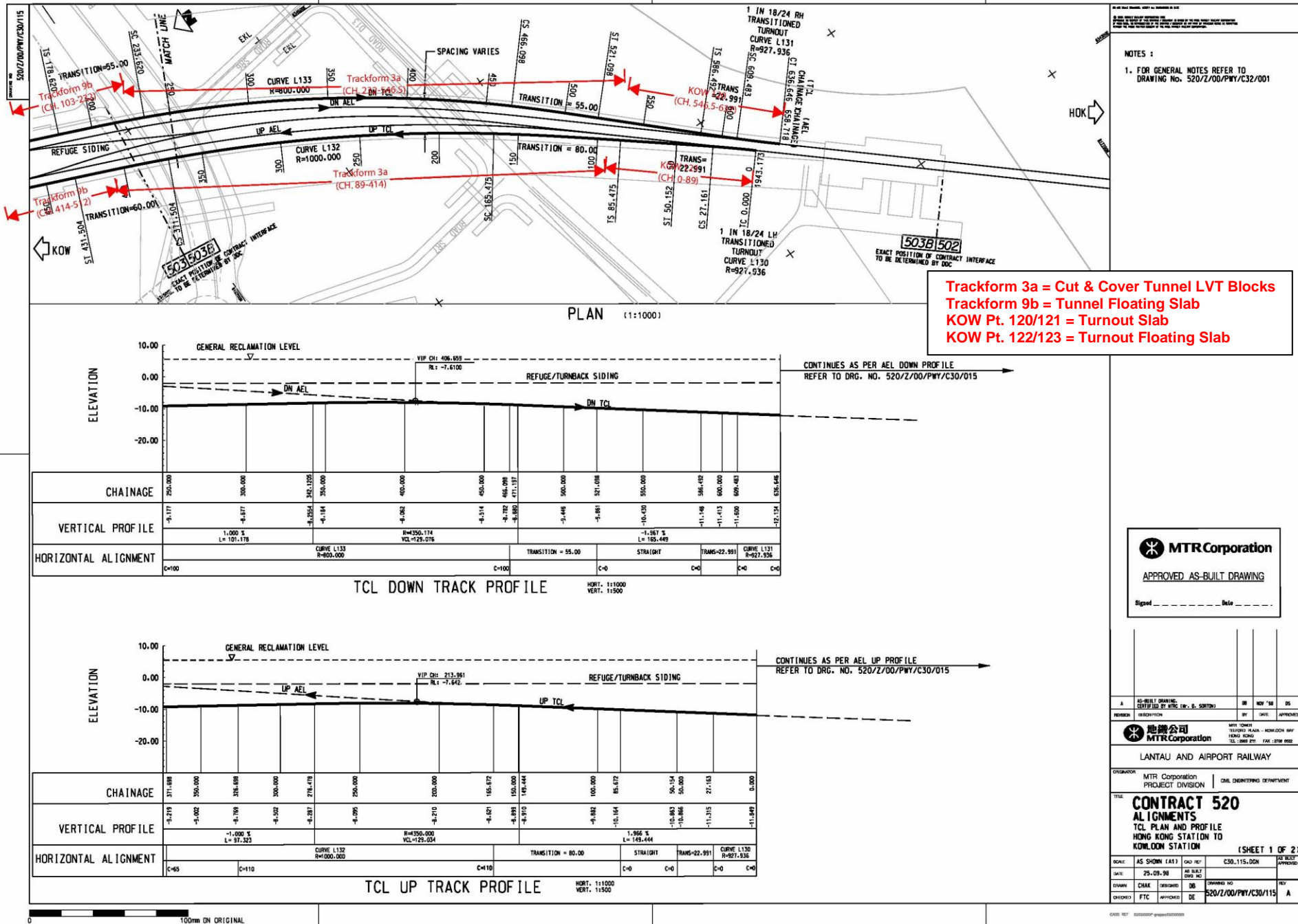
DESIGNER: MTR Corporation PROJECT DIVISION: CIVIL ENGINEERING DEPARTMENT

**CONTRACT 520**  
**ALIGNMENTS**  
**AEL PLAN AND PROFILE**  
**HONG KONG STATION TO**  
**KOWLOON STATION (SHEET 1 OF 2)**

SCALE:	AS SHOWN (A1)	DATE:	23-09-98	AS BUILT:	C30_015.DGN	BY:	REV: '04	DATE:	05
DRAWN:	CHAK	DESIGNED:	DB	APPROVED:	DE	PROJECT NO.:	520/2/00/PWY/C30/015	REV:	A
CHECKED:	FTC	APPROVED:	DE						

DATE PLOTTED: 05/09/2004

# Appendix 4.12 - Trackform Information of AEL/TCL at WKCD



NOTES:  
 1. FOR GENERAL NOTES REFER TO DRAWING NO. 520/Z/00/PWY/C30/001

**Trackform 3a = Cut & Cover Tunnel LVT Blocks**  
**Trackform 9b = Tunnel Floating Slab**  
**KOW Pt. 120/121 = Turnout Slab**  
**KOW Pt. 122/123 = Turnout Floating Slab**

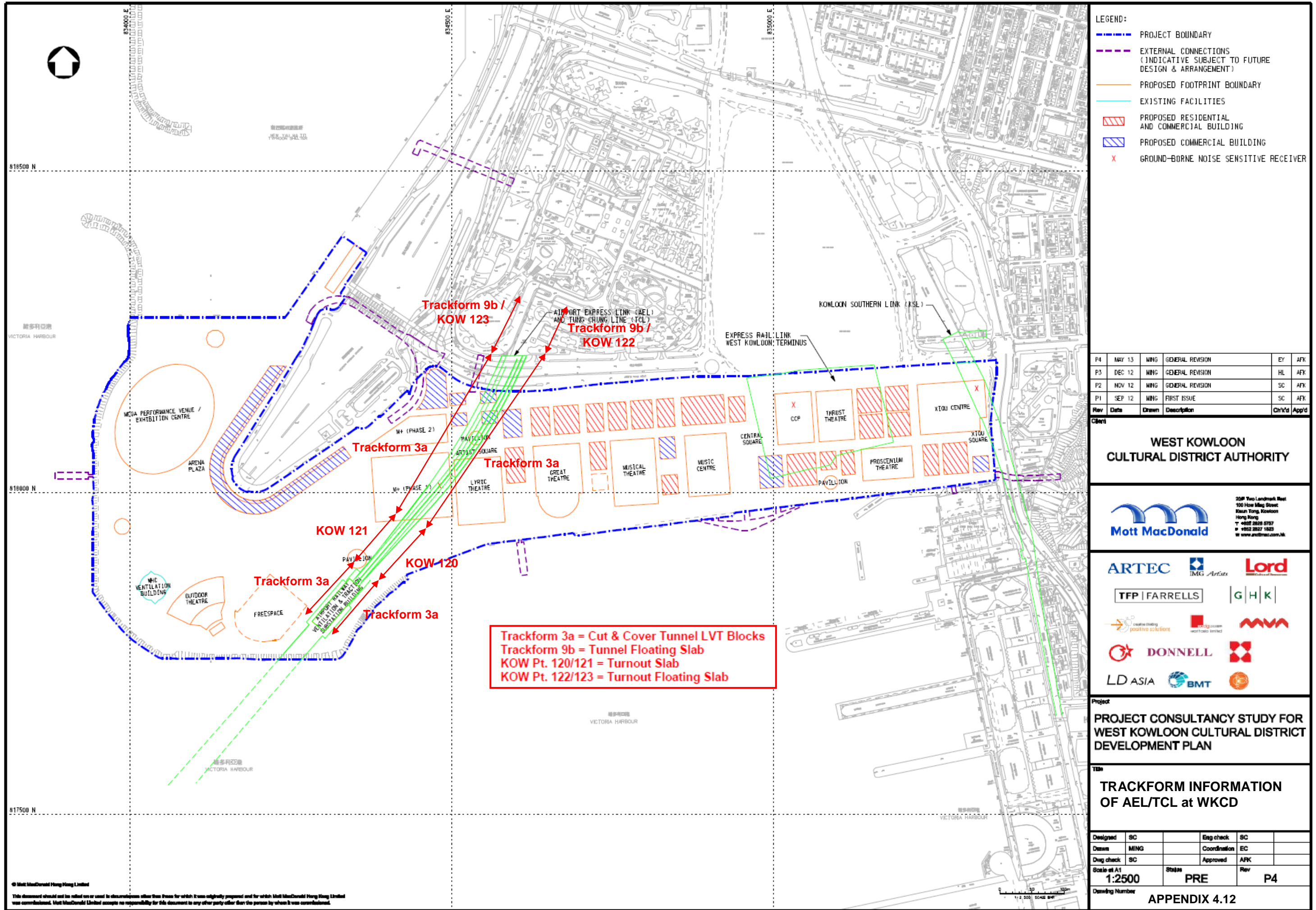
**MTR Corporation**  
 APPROVED AS-BUILT DRAWING  
 Signed: \_\_\_\_\_ Date: \_\_\_\_\_

AS-BUILT DRAWING	DATE	BY	APPROVED
REVISION	DESCRIPTION	DATE	APPROVED
<b>地產公司</b> <b>MTR Corporation</b> MTR CORP. TRADING MAN. HONGKONG HONG KONG TEL: 2862 2781 FAX: 2706 8822			
LANTAU AND AIRPORT RAILWAY			
ORIGINATOR: MTR Corporation   CIVIL ENGINEERING DEPARTMENT PROJECT DIVISION			
TITLE: <b>CONTRACT 520</b> <b>ALIGNMENTS</b> TCL PLAN AND PROFILE HONG KONG STATION TO KOWLOON STATION (SHEET 1 OF 2)			
SCALE	AS SHOWN (A1)	DATE	30.11.2008
DATE	25.09.08	AS-BUILT DATE	
DRAWN	CHKD	DESIGNED	APPROVED
CHECKED	ETC	APPROVED	DE

DRAWING NO. 520/Z/00/PWY/C30/115



Appendix 4.12 - Trackform Information of AEL/TCL at WKCD



LEGEND:

- PROJECT BOUNDARY
- EXTERNAL CONNECTIONS (INDICATIVE SUBJECT TO FUTURE DESIGN & ARRANGEMENT)
- PROPOSED FOOTPRINT BOUNDARY
- EXISTING FACILITIES
- ▨ PROPOSED RESIDENTIAL AND COMMERCIAL BUILDING
- ▨ PROPOSED COMMERCIAL BUILDING
- X GROUND-BORNE NOISE SENSITIVE RECEIVER

Rev	Date	Drawn	Description	Chk'd	App'd
P4	MAY 13	MING	GENERAL REVISION	EY	AFK
P3	DEC 12	MING	GENERAL REVISION	HL	AFK
P2	NOV 12	MING	GENERAL REVISION	SC	AFK
P1	SEP 12	MING	FIRST ISSUE	SC	AFK

Client  
**WEST KOWLOON CULTURAL DISTRICT AUTHORITY**

**Mott MacDonald**  
208 Two Landmark West  
100 How Ming Street  
Kowloon, Hong Kong  
T: +852 2828 5757  
F: +852 2827 1823  
www.mottmac.com.hk

ARTEC | IMG Artists | Lord  
TFP | FARRELLS | G|H|K  
positive solutions | MAVA  
DONNELL  
LD ASIA | BMT

Project  
**PROJECT CONSULTANCY STUDY FOR WEST KOWLOON CULTURAL DISTRICT DEVELOPMENT PLAN**

Title  
**TRACKFORM INFORMATION OF AEL/TCL at WKCD**

Designed	SC	Eng check	SC
Drawn	MING	Coordination	EC
Draw check	SC	Approved	AFK
Scale at A1	1:2500	Stage	PRE
Scale at A2	1:500	Rev	P4

Drawing Number **APPENDIX 4.12**

This document should not be relied on or used in circumstances other than those for which it was originally prepared and for which Mott MacDonald Hong Kong Limited was commissioned. Mott MacDonald Limited accepts no responsibility for this document to any other party other than the person by whom it was commissioned.