

Trips and VKT in 2015

Multiplication Factor = 100

Trips_Petrol		Type 4 Local Road (50km/h)														
EMFAC Index	1	3	4	5	6	7	8	11	12	13	14	15	16	17	18	19
Hour	PC	taxi	LGV3	LGV4	LGV6	HGV7	HGV8	PLB	PV4	PV5	NFB6	NFB7	NFB8	FBSD	FBDD	MC
0-1	10588		5	47					44	0						3663
1-2	9881		0	47					44	0						3663
2-3	7710		0	37					44	0						2629
3-4	7483		0	37					44	0						2629
4-5	4939		0	23					44	0						1379
5-6	4933		0	21					0	0						1040
6-7	5076		0	21					0	0						1040
7-8	7320		5	31					0	0						1344
8-9	13259		17	54					283	1						4200
9-10	17052		21	74					295	1						5126
10-11	18824		17	82					283	1						5310
11-12	18550		17	79					283	1						5007
12-13	17769		17	75					283	1						5392
13-14	17164		17	72					283	1						5392
14-15	17616		17	74					283	1						5240
15-16	17179		10	72					115	1						5240
16-17	16700		10	70					0	0						5158
17-18	17647		10	68					0	0						5427
18-19	17903		13	61					20	0						5238
19-20	16797		10	57					0	0						4738
20-21	14146		10	50					0	0						4200
21-22	13057		10	48					0	0						3897
22-23	13232		5	50					0	0						4049
23-0	14986		5	57					0	0						4049
<b>Total</b>	319812	0	222	1306	0	0	0	0	2347	11	0	0	0	0	0	95050

Trips_LPG		Type 4 Local Road (50km/h)														
EMFAC Index	1	3	4	5	6	7	8	11	12	13	14	15	16	17	18	19
Hour	PC	taxi	LGV3	LGV4	LGV6	HGV7	HGV8	PLB	PV4	PV5	NFB6	NFB7	NFB8	FBSD	FBDD	MC
0-1		1778						331	0	25						
1-2		1683						336	0	25						
2-3		1270						251	0	25						
3-4		1271						252	0	25						
4-5		805						175	0	25						
5-6		799						169	0	0						
6-7		873						164	0	0						
7-8		1280						221	0	0						
8-9		2308						388	0	135						
9-10		3020						520	0	143						
10-11		3348						601	0	135						
11-12		3274						578	0	135						
12-13		3141						539	0	135						
13-14		2989						530	0	135						
14-15		3007						543	0	135						
15-16		2933						492	0	55						
16-17		2793						440	0	0						
17-18		2928						480	0	0						
18-19		2808						384	0	21						
19-20		2572						356	0	0						
20-21		2235						317	0	0						
21-22		2122						316	0	0						
22-23		2136						316	0	0						
23-0		2409						346	0	0						
<b>Total</b>	0	53780	0	0	0	0	0	9045	0	1156	0	0	0	0	0	0

Note: Trips only account for cold start of petrol and LPG vehicles. There is no cold start for Road type 1 - 3 or 5.

VKT (Veh-km) Petrol		Type 1 Expressway (100km/h)															
EMFAC Index	1	3	4	5	6	7	8	11	12	13	14	15	16	17	18	19	
Hour	PC	taxi	LGV3	LGV4	LGV6	HGV7	HGV8	PLB	PV4	PV5	NFB6	NFB7	NFB8	FBSD	FBDD	MC	
0-1	62610		59	115					0	0						2230	1144
1-2	36328		0	67					0	0						1320	677
2-3	29626		0	56					0	0						1115	563
3-4	30428		0	56					0	0						1115	566
4-5	30104		0	56					0	0						1115	566
5-6	29666		0	51					0	0						1115	562
6-7	57976		59	101					201	0						2230	1131
7-8	85878		59	149					201	0						3570	1692
8-9	214407		146	365					790	3						9065	4305
9-10	194404		146	327					790	3						8362	3945
10-11	169961		146	290					790	3						7245	3393
11-12	174486		146	301					790	3						7020	3408
12-13	153417		116	275					589	3						6210	2949
13-14	150885		116	270					406	2						6130	2843
14-15	178652		146	325					406	2						7040	3313
15-16	188325		146	352					406	2						7245	3434
16-17	191275		146	360					406	2						7020	3432
17-18	221329		176	420					406	2						8260	3911
18-19	259114		176	500					408	2						9381	4495
19-20	196891		146	383					406	2						7120	3455
20-21	129696		86	245					406	2						4790	2305
21-22	103070		86	193					0	0						3880	1838
22-23	100972		86	193					201	0						3880	1830
23-0	69492		59	126					0	0						2535	1260
<b>Total</b>	<b>3058992</b>	<b>0</b>	<b>2247</b>	<b>5578</b>	<b>0</b>	<b>0</b>	<b>0</b>	<b>0</b>	<b>7603</b>	<b>35</b>	<b>0</b>	<b>0</b>	<b>0</b>	<b>0</b>	<b>0</b>	<b>118993</b>	

VKT (Veh-km) Petrol		Type 2 Trunk Road (80km/h)															
EMFAC Index	1	3	4	5	6	7	8	11	12	13	14	15	16	17	18	19	
Hour	PC	taxi	LGV3	LGV4	LGV6	HGV7	HGV8	PLB	PV4	PV5	NFB6	NFB7	NFB8	FBSD	FBDD	MC	
0-1	46918		47	84					62	0						1755	854
1-2	24991		0	43					62	0						860	461
2-3	22375		0	40					0	0						790	416
3-4	22744		0	40					0	0						790	418
4-5	22141		0	40					0	0						790	414
5-6	21907		0	40					0	0						790	413
6-7	42563		47	69					321	0						1510	839
7-8	63737		47	107					384	0						2660	1253
8-9	163727		103	269					705	3						6585	3267
9-10	144271		104	236					706	3						5944	2915
10-11	126427		103	212					705	2						5145	2510
11-12	128211		103	222					705	2						4960	2513
12-13	111417		79	197					384	2						4310	2137
13-14	112170		79	200					384	2						4415	2115
14-15	135741		103	251					446	2						5135	2508
15-16	140540		103	261					446	2						5205	2561
16-17	143400		103	272					446	2						5195	2569
17-18	168352		126	323					446	2						5915	2970
18-19	196566		127	386					512	3						6893	3418
19-20	147975		103	284					446	2						5195	2596
20-21	96676		56	188					446	2						3440	1723
21-22	74720		56	140					62	0						2545	1329
22-23	73609		56	136					384	0						2545	1329
23-0	50043		47	90					62	0						1755	904
<b>Total</b>	<b>2281217</b>	<b>0</b>	<b>1594</b>	<b>4130</b>	<b>0</b>	<b>0</b>	<b>0</b>	<b>0</b>	<b>8119</b>	<b>35</b>	<b>0</b>	<b>0</b>	<b>0</b>	<b>0</b>	<b>0</b>	<b>85127</b>	

VKT (Veh-km) Petrol		Type 3 Trunk Road (50km/h)															
EMFAC Index	1	3	4	5	6	7	8	11	12	13	14	15	16	17	18	19	
Hour	PC	taxi	LGV3	LGV4	LGV6	HGV7	HGV8	PLB	PV4	PV5	NFB6	NFB7	NFB8	FBSD	FBDD	MC	
0-1	306566		269	1105					4403	22						19403	8762
1-2	224254		204	866					2738	13						13843	6525
2-3	202403		204	804					3464	15						12918	6155
3-4	168232		177	669					2296	10						11115	5118
4-5	145289		102	542					2325	12						8495	4469
5-6	132893		65	467					1270	5						7163	3948
6-7	185594		103	646					2221	18						11743	5416
7-8	372129		385	1180					6981	41						24650	10926
8-9	653206		543	1884					12031	78						38640	18968
9-10	638732		587	1940					12177	80						38676	19060
10-11	609886		570	1940					12134	77						37613	18203
11-12	610646		570	1943					11714	73						37740	17869
12-13	589332		591	1895					10344	63						35988	16943
13-14	603380		568	1952					9164	55						36403	16985
14-15	630465		672	2106					9659	51						38988	17440
15-16	668403		774	2161					9353	44						40290	17962
16-17	684088		794	2220					9489	43						40563	17915
17-18	702367		768	2219					8804	39						40675	17797
18-19	757927		783	2329					9224	39						41271	18578
19-20	717237		768	2224					8800	37						40560	17873
20-21	576069		726	1813					7706	36						31920	14638
21-22	541069		668	1721					7436	36						32090	14234
22-23	471195		497	1569					5771	33						29953	12711
23-0	419812		473	1406					5557	32						25488	11412
<b>Total</b>	11611176	0	11859	37600	0	0	0	0	175064	953	0	0	0	0	0	696181	

VKT (Veh-km) Petrol		Type 4 Local Road (50km/h)															
EMFAC Index	1	3	4	5	6	7	8	11	12	13	14	15	16	17	18	19	
Hour	PC	taxi	LGV3	LGV4	LGV6	HGV7	HGV8	PLB	PV4	PV5	NFB6	NFB7	NFB8	FBSD	FBDD	MC	
0-1	24346		12	106					129	1						1568	673
1-2	22719		0	107					129	1						1568	627
2-3	17728		0	83					129	1						1125	486
3-4	17205		0	83					129	1						1125	483
4-5	11357		0	51					129	1						590	315
5-6	11342		0	47					0	0						445	303
6-7	11671		0	47					0	0						445	321
7-8	16831		12	70					0	0						575	472
8-9	30485		42	122					837	4						1798	911
9-10	39208		50	169					871	4						2194	1177
10-11	43283		42	185					837	4						2273	1270
11-12	42652		42	179					837	4						2143	1236
12-13	40856		42	171					837	4						2308	1190
13-14	39465		42	163					837	4						2308	1140
14-15	40504		42	167					837	4						2243	1156
15-16	39500		25	163					339	2						2243	1102
16-17	38399		25	158					0	0						2208	1039
17-18	40577		25	155					0	0						2323	1084
18-19	41165		31	139					60	1						2242	1087
19-20	38621		25	128					0	0						2028	1014
20-21	32526		25	112					0	0						1798	865
21-22	30022		25	109					0	0						1668	818
22-23	30423		12	114					0	0						1733	817
23-0	34457		12	130					0	0						1733	939
<b>Total</b>	735343	0	531	2958	0	0	0	0	6939	33	0	0	0	0	0	40675	

VKT (Veh-km) Diesel		Type 1 Expressway (100km/h)														
EMFAC Index	1	3	4	5	6	7	8	11	12	13	14	15	16	17	18	19
Hour	PC	taxi	LGV3	LGV4	LGV6	HGV7	HGV8	PLB	PV4	PV5	NFB6	NFB7	NFB8	FBSD	FBDD	MC
0-1	210	0	396	4445	2890	2230	6235	722	0	0	3345	2230	1775	455	5120	
1-2	122	0	0	2573	1980	1320	3960	458	0	0	1980	1320	1320	0	3300	
2-3	99	0	0	2174	1570	1115	3345	363	0	0	1775	1115	1115	0	2890	
3-4	102	0	0	2174	1115	1115	3345	363	0	0	1775	1115	1115	0	2890	
4-5	101	0	0	2174	1115	1115	3345	363	0	0	1775	1115	1115	0	2890	
5-6	99	0	0	1949	1115	1115	3345	363	0	0	1775	1115	1115	0	2890	
6-7	194	0	396	3904	2455	2455	7020	720	24	0	3570	2790	2230	455	5450	
7-8	287	0	396	5756	3675	3675	10695	1032	24	0	5570	4130	3115	455	8565	
8-9	718	0	969	14065	9520	9950	28080	2641	95	315	14330	10635	8835	1340	21805	
9-10	651	0	970	12604	8369	9247	26077	2373	95	315	13377	10037	8131	1340	20145	
10-11	569	0	969	11185	7575	7800	21610	2063	95	315	10920	8360	6790	1115	17025	
11-12	584	0	969	11609	7805	7345	21160	2086	95	315	10590	8135	6460	1115	16800	
12-13	513	0	774	10600	6995	6210	17645	1824	71	315	9000	6665	5550	885	14195	
13-14	505	0	774	10425	7020	5800	16370	1752	49	217	8235	6235	4890	885	13355	
14-15	598	0	969	12520	8490	6485	18315	2016	49	217	9170	7145	5575	1115	15405	
15-16	630	0	969	13563	9250	6460	18375	2164	49	217	9020	6790	5575	1115	15690	
16-17	640	0	969	13885	9350	6235	17815	2187	49	217	8795	6565	5120	1115	15360	
17-18	741	0	1169	16205	11045	6815	19535	2556	49	217	9375	7250	5805	1115	16850	
18-19	867	0	1171	19263	13064	7476	21419	2890	49	219	10275	7815	6139	1115	19185	
19-20	659	0	969	14752	9680	5905	16805	2240	49	217	8010	6005	4790	1115	15030	
20-21	434	0	574	9440	6565	4005	11355	1518	49	217	5450	4335	3445	660	10240	
21-22	345	0	574	7442	5095	3095	9410	1180	0	0	4540	3650	2765	660	8190	
22-23	338	0	574	7442	4865	3550	9635	1180	24	0	4765	3650	2990	660	8190	
23-0	233	0	396	4844	3425	2435	6850	792	0	0	3095	2435	1980	455	5630	
<b>Total</b>	10239	0	14946	214991	144028	112953	321746	35844	914	3317	160512	120636	97740	17170	267090	0

VKT (Veh-km) Diesel		Type 2 Trunk Road (80km/h)														
EMFAC Index	1	3	4	5	6	7	8	11	12	13	14	15	16	17	18	19
Hour	PC	taxi	LGV3	LGV4	LGV6	HGV7	HGV8	PLB	PV4	PV5	NFB6	NFB7	NFB8	FBSD	FBDD	MC
0-1	157	0	313	3251	2185	1580	4485	554	8	33	2230	1685	1325	360	3555	
1-2	84	0	0	1677	1290	860	2510	331	8	33	1150	790	790	0	1940	
2-3	75	0	0	1540	1150	790	2300	298	0	0	1150	790	720	0	1870	
3-4	76	0	0	1540	965	790	2300	298	0	0	1150	790	720	0	1870	
4-5	74	0	0	1540	965	790	2300	298	0	0	1150	790	720	0	1870	
5-6	73	0	0	1540	965	790	2300	298	0	0	1150	975	720	0	1870	
6-7	142	0	313	2661	1940	1940	5030	581	39	33	2660	1940	1510	360	3925	
7-8	213	0	313	4133	2730	2730	7690	796	46	33	3995	3020	2230	360	5795	
8-9	548	0	687	10381	7085	7375	20685	2117	85	272	10510	7920	6445	1080	15735	
9-10	483	0	691	9089	6041	6733	18691	1900	85	273	9507	7277	5728	1080	14005	
10-11	423	0	687	8163	5460	5575	15565	1658	85	239	7805	5935	4820	895	11765	
11-12	429	0	687	8573	5635	5390	15205	1658	85	239	7550	5935	4645	895	11765	
12-13	373	0	526	7588	4985	4310	12500	1465	46	239	6110	4600	3740	720	9595	
13-14	375	0	526	7690	5160	4240	11815	1417	46	239	5855	4530	3485	720	9525	
14-15	454	0	687	9684	6240	4775	13605	1640	54	239	6505	5065	4030	720	11140	
15-16	470	0	687	10059	6740	4845	13385	1729	54	239	6390	4880	3915	720	10955	
16-17	480	0	687	10478	6985	4590	13015	1729	54	239	5960	4520	3555	720	10770	
17-18	563	0	839	12462	8240	4950	14445	2035	54	239	6670	5055	4090	895	12200	
18-19	658	0	843	14870	9912	5558	16024	2331	62	243	7229	5612	4459	895	13700	
19-20	495	0	687	10956	7230	4230	12470	1785	54	239	5590	4335	3555	720	10400	
20-21	324	0	374	7227	4800	2905	8530	1191	54	205	3730	3010	2405	535	7100	
21-22	250	0	374	5405	3720	2185	6555	941	8	33	3010	2475	1870	360	5310	
22-23	246	0	374	5234	3475	2370	6740	925	46	33	3195	2475	1870	360	5495	
23-0	167	0	313	3455	2325	1580	4625	586	8	33	2115	1755	1325	360	3625	
<b>Total</b>	7635	0	10605	159195	106223	81881	232770	28563	976	3377	112366	86159	68672	12755	185780	0

VKT (Veh-km) Diesel		Type 3 Trunk Road (50km/h)														
EMFAC Index	1	3	4	5	6	7	8	11	12	13	14	15	16	17	18	19
Hour	PC	taxi	LGV3	LGV4	LGV6	HGV7	HGV8	PLB	PV4	PV5	NFB6	NFB7	NFB8	FBSD	FBDD	MC
0-1	1026	0	1789	42578	27845	13093	38043	6800	529	2074	14443	11078	6260	4283	79410	
1-2	751	0	1354	33391	21585	9368	30020	5437	329	1248	9423	6895	4145	3510	62068	
2-3	677	0	1354	30976	20520	9135	28495	5567	416	1477	9063	7150	4030	3285	60353	
3-4	563	0	1176	25771	16865	8168	24868	4705	276	968	8333	6255	3458	2488	50155	
4-5	486	0	678	20883	13385	6398	20450	4072	280	1153	7758	5438	2845	2318	47103	
5-6	445	0	435	17996	11640	5675	19063	3678	153	478	7015	5905	3008	1753	36728	
6-7	621	0	687	24899	15978	9595	28420	4650	267	1693	11638	8840	4665	2133	43078	
7-8	1246	0	2560	45495	30465	18350	56658	8557	839	3958	24523	19100	11840	3988	71215	
8-9	2186	0	3610	72606	48880	34475	99438	13834	1446	7426	47798	39038	24180	6883	116968	
9-10	2138	0	3902	74776	50600	34941	101039	14508	1464	7687	49641	40623	25328	7163	120535	
10-11	2041	0	3788	74782	50030	33335	92723	14481	1458	7333	46280	36833	23833	7333	117108	
11-12	2044	0	3788	74880	50463	31505	87393	13904	1408	7025	42415	33663	22463	7278	113410	
12-13	1973	0	3931	73055	49340	27958	80088	13328	1243	6067	38118	30018	20963	6675	107518	
13-14	2020	0	3779	75248	50163	26835	78218	12875	1101	5283	33768	27488	19398	6955	114210	
14-15	2110	0	4470	81162	54093	25950	78578	13091	1161	4925	32383	25600	18328	7060	116133	
15-16	2237	0	5148	83282	56483	26775	76450	12916	1124	4182	30803	24003	17243	7025	114975	
16-17	2290	0	5283	85577	56823	24818	72830	12340	1141	4075	28040	21475	16888	7053	112168	
17-18	2351	0	5105	85536	57148	23345	68633	11399	1058	3714	24860	18615	15460	6813	108423	
18-19	2537	0	5209	89777	59902	22654	66739	11208	1109	3754	23529	17631	15564	6643	107325	
19-20	2401	0	5105	85741	56935	22548	65225	11011	1058	3580	23480	17570	15310	6643	104823	
20-21	1928	0	4827	69870	46268	19593	56168	9422	926	3473	20743	15943	14070	5278	88588	
21-22	1811	0	4444	66351	44028	18325	55063	9444	894	3418	21323	16925	14155	5750	93018	
22-23	1577	0	3308	60474	39645	17720	52118	8712	694	3149	18995	15193	12365	5520	88940	
23-0	1405	0	3147	54184	35550	16673	46710	8032	668	3078	17368	13658	11580	5378	85860	
<b>Total</b>	<b>38863</b>	<b>0</b>	<b>78877</b>	<b>1449291</b>	<b>964629</b>	<b>487228</b>	<b>1423423</b>	<b>233970</b>	<b>21043</b>	<b>91217</b>	<b>591732</b>	<b>464931</b>	<b>327374</b>	<b>129200</b>	<b>2160105</b>	<b>0</b>

VKT (Veh-km) Diesel		Type 4 Local Road (50km/h)														
EMFAC Index	1	3	4	5	6	7	8	11	12	13	14	15	16	17	18	19
Hour	PC	taxi	LGV3	LGV4	LGV6	HGV7	HGV8	PLB	PV4	PV5	NFB6	NFB7	NFB8	FBSD	FBDD	MC
0-1	81	0	83	4099	2553	1083	3140	867	16	69	705	540	2323	0	1405	
1-2	76	0	0	4118	2553	1083	3270	880	16	69	705	540	1148	0	675	
2-3	59	0	0	3195	2028	720	2803	656	16	69	540	475	878	0	675	
3-4	58	0	0	3204	2178	720	2868	660	16	69	540	475	878	0	675	
4-5	38	0	0	1966	1165	465	1773	459	16	69	375	310	813	0	675	
5-6	38	0	0	1825	1165	320	1773	443	0	0	230	165	838	0	635	
6-7	39	0	0	1825	1165	385	1838	428	0	0	230	165	1340	0	635	
7-8	56	0	83	2688	1568	485	2168	577	0	0	560	395	1908	0	2000	
8-9	102	0	278	4688	2990	1638	4673	1014	101	369	1853	1288	3338	165	4015	
9-10	131	0	333	6503	4268	2129	6257	1359	105	391	2257	1632	4738	165	3975	
10-11	145	0	278	7125	4770	2023	6640	1573	101	369	2348	1683	3568	165	4015	
11-12	143	0	278	6913	4280	2023	6160	1511	101	369	2183	1518	3503	165	4055	
12-13	137	0	278	6582	4065	2023	6000	1410	101	369	2118	1418	3438	165	4095	
13-14	132	0	278	6284	4060	1958	5435	1387	101	369	1953	1353	2935	165	4135	
14-15	136	0	278	6440	4190	2008	5433	1422	101	369	1983	1318	2835	165	4160	
15-16	132	0	165	6294	4155	1743	4688	1288	41	150	1460	1060	3080	0	4200	
16-17	129	0	165	6075	3815	1468	4373	1152	0	0	980	690	2910	0	4240	
17-18	136	0	165	5965	3900	1148	4073	1255	0	0	980	690	3583	0	4280	
18-19	138	0	206	5355	3601	1113	3009	1004	7	57	994	796	7568	0	4320	
19-20	129	0	165	4949	3440	1083	2910	933	0	0	910	525	7445	0	4280	
20-21	109	0	165	4333	2963	1083	2815	829	0	0	525	460	5768	0	3565	
21-22	100	0	165	4216	2778	1083	2815	827	0	0	690	525	5095	0	3565	
22-23	102	0	83	4396	3013	1083	3150	827	0	0	560	395	4688	0	2850	
23-0	115	0	83	4995	3483	1083	3755	905	0	0	720	555	8053	0	2080	
<b>Total</b>	<b>2461</b>	<b>0</b>	<b>3529</b>	<b>114034</b>	<b>74141</b>	<b>29942</b>	<b>91814</b>	<b>23667</b>	<b>834</b>	<b>3158</b>	<b>26396</b>	<b>18968</b>	<b>82664</b>	<b>1155</b>	<b>69205</b>	<b>0</b>

VKT (Veh-km) LPG		Type 1 Expressway (100km/h)														
EMFAC Index	1	3	4	5	6	7	8	11	12	13	14	15	16	17	18	19
Hour	PC	taxi	LGV3	LGV4	LGV6	HGV7	HGV8	PLB	PV4	PV5	NFB6	NFB7	NFB8	FBSD	FBDD	MC
0-1		16930						2398	0	0						
1-2		10105						1522	0	0						
2-3		8690						1207	0	0						
3-4		8690						1207	0	0						
4-5		9020						1207	0	0						
5-6		9250						1207	0	0						
6-7		18495						2395	0	0						
7-8		28530						3428	0	0						
8-9		73295						8779	0	342						
9-10		68474						7887	0	342						
10-11		57280						6857	0	342						
11-12		55710						6934	0	342						
12-13		46640						6061	0	342						
13-14		43885						5823	0	235						
14-15		49700						6699	0	235						
15-16		49670						7191	0	235						
16-17		48200						7268	0	235						
17-18		53005						8494	0	235						
18-19		59161						9605	0	238						
19-20		46640						7445	0	235						
20-21		31735						5047	0	235						
21-22		25690						3920	0	0						
22-23		25915						3920	0	0						
23-0		18570						2633	0	0						
<b>Total</b>	0	863280	0	0	0	0	0	119136	0	3594	0	0	0	0	0	0

VKT (Veh-km) LPG		Type 2 Trunk Road (80km/h)														
EMFAC Index	1	3	4	5	6	7	8	11	12	13	14	15	16	17	18	19
Hour	PC	taxi	LGV3	LGV4	LGV6	HGV7	HGV8	PLB	PV4	PV5	NFB6	NFB7	NFB8	FBSD	FBDD	MC
0-1		12935						1841	0	36						
1-2		7545						1099	0	36						
2-3		6705						992	0	0						
3-4		6705						992	0	0						
4-5		6890						992	0	0						
5-6		6890						992	0	0						
6-7		14325						1929	0	36						
7-8		21585						2644	0	36						
8-9		57045						7038	0	295						
9-10		52001						6315	0	296						
10-11		43520						5512	0	259						
11-12		42675						5512	0	259						
12-13		35360						4870	0	259						
13-14		33675						4708	0	259						
14-15		38590						5450	0	259						
15-16		38505						5746	0	259						
16-17		37660						5746	0	259						
17-18		42030						6765	0	259						
18-19		46938						7749	0	264						
19-20		36630						5935	0	259						
20-21		24910						3959	0	223						
21-22		19705						3129	0	36						
22-23		20180						3075	0	36						
23-0		14125						1949	0	36						
<b>Total</b>	0	667129	0	0	0	0	0	94937	0	3660	0	0	0	0	0	0

VKT (Veh-km) LPG		Type 3 Trunk Road (50km/h)														
EMFAC Index	1	3	4	5	6	7	8	11	12	13	14	15	16	17	18	19
Hour	PC	taxi	LGV3	LGV4	LGV6	HGV7	HGV8	PLB	PV4	PV5	NFB6	NFB7	NFB8	FBSD	FBDD	MC
0-1		270298						22600	0	2247						
1-2		201678						18071	0	1352						
2-3		193075						18505	0	1600						
3-4		158613						15638	0	1049						
4-5		142088						13535	0	1250						
5-6		126180						12227	0	517						
6-7		166840						15457	0	1834						
7-8		355758						28441	0	4288						
8-9		617585						45981	0	8046						
9-10		622871						48220	0	8329						
10-11		590638						48132	0	7946						
11-12		578735						46216	0	7612						
12-13		544965						44299	0	6574						
13-14		541158						42793	0	5724						
14-15		548135						43512	0	5336						
15-16		565105						42929	0	4532						
16-17		558053						41017	0	4415						
17-18		550453						37888	0	4025						
18-19		571305						37252	0	4068						
19-20		555745						36597	0	3880						
20-21		453315						31316	0	3763						
21-22		450338						31389	0	3704						
22-23		401308						28958	0	3413						
23-0		355068						26696	0	3335						
<b>Total</b>	0	10119301	0	0	0	0	0	777667	0	98839	0	0	0	0	0	0

VKT (Veh-km) LPG		Type 4 Local Road (50km/h)														
EMFAC Index	1	3	4	5	6	7	8	11	12	13	14	15	16	17	18	19
Hour	PC	taxi	LGV3	LGV4	LGV6	HGV7	HGV8	PLB	PV4	PV5	NFB6	NFB7	NFB8	FBSD	FBDD	MC
0-1		21218						2883	0	75						
1-2		20080						2925	0	75						
2-3		15158						2179	0	75						
3-4		15168						2195	0	75						
4-5		9603						1524	0	75						
5-6		9538						1474	0	0						
6-7		10413						1424	0	0						
7-8		15275						1918	0	0						
8-9		27545						3371	0	400						
9-10		36040						4518	0	424						
10-11		39950						5227	0	400						
11-12		39075						5024	0	400						
12-13		37483						4687	0	400						
13-14		35673						4610	0	400						
14-15		35880						4726	0	400						
15-16		35000						4280	0	163						
16-17		33328						3828	0	0						
17-18		34948						4172	0	0						
18-19		33507						3336	0	62						
19-20		30690						3100	0	0						
20-21		26678						2754	0	0						
21-22		25328						2750	0	0						
22-23		25485						2750	0	0						
23-0		28748						3008	0	0						
<b>Total</b>	0	641805	0	0	0	0	0	78663	0	3422	0	0	0	0	0	0

Trips and VKT in 2020

Multiplication Factor = 100

Trips_Petrol		Type 4 Local Road (50km/h)														
EMFAC Index	1	3	4	5	6	7	8	11	12	13	14	15	16	17	18	19
Hour	PC	taxi	LGV3	LGV4	LGV6	HGV7	HGV8	PLB	PV4	PV5	NFB6	NFB7	NFB8	FBSD	FBDD	MC
0-1	16205		3	47					43	0						4621
1-2	12945		0	42					43	0						4247
2-3	9603		0	30					43	0						2629
3-4	9250		0	31					43	0						2629
4-5	6528		0	19					43	0						1484
5-6	7359		0	23					0	0						1145
6-7	8169		0	27					0	0						1145
7-8	12618		3	37					0	0						2056
8-9	20787		14	63					280	1						5071
9-10	27921		22	92					333	1						7148
10-11	26889		14	85					280	1						6952
11-12	26857		10	83					280	1						6379
12-13	25127		10	76					280	1						6368
13-14	24450		10	72					280	1						6105
14-15	25403		9	74					280	1						6455
15-16	27263		5	73					114	0						6718
16-17	27385		5	70					0	0						6672
17-18	31034		5	70					0	0						6929
18-19	43363		14	73					111	1						8372
19-20	40187		9	72					48	1						8342
20-21	33964		9	66					48	0						7583
21-22	28431		9	59					0	0						6718
22-23	25857		8	58					0	0						5947
23-0	34068		10	75					48	0						7291
<b>Total</b>	551661	0	170	1417	0	0	0	0	2602	10	0	0	0	0	0	129008

Trips_LPG		Type 4 Local Road (50km/h)														
EMFAC Index	1	3	4	5	6	7	8	11	12	13	14	15	16	17	18	19
Hour	PC	taxi	LGV3	LGV4	LGV6	HGV7	HGV8	PLB	PV4	PV5	NFB6	NFB7	NFB8	FBSD	FBDD	MC
0-1		2462						339	0	27						
1-2		2090						343	0	27						
2-3		1541						258	0	27						
3-4		1484						260	0	27						
4-5		1013						189	0	27						
5-6		1145						168	0	0						
6-7		1258						168	0	0						
7-8		1956						225	0	0						
8-9		3330						400	0	144						
9-10		4456						531	0	218						
10-11		4446						612	0	174						
11-12		4377						583	0	174						
12-13		4124						556	0	144						
13-14		3944						542	0	144						
14-15		4042						549	0	144						
15-16		4159						513	0	89						
16-17		4093						458	0	30						
17-18		4550						497	0	30						
18-19		5746						396	0	164						
19-20		5323						375	0	186						
20-21		4561						330	0	81						
21-22		3905						329	0	51						
22-23		3666						329	0	51						
23-0		4660						344	0	81						
<b>Total</b>	0	82333	0	0	0	0	0	9294	0	2042	0	0	0	0	0	0

Note: Trips only account for cold start of petrol and LPG vehicles. There is no cold start for Road type 1 - 3 or 5.



VKT (Veh-km) Petrol		Type 1 Expressway (100km/h)															
EMFAC Index	1	3	4	5	6	7	8	11	12	13	14	15	16	17	18	19	
Hour	PC	taxi	LGV3	LGV4	LGV6	HGV7	HGV8	PLB	PV4	PV5	NFB6	NFB7	NFB8	FBSD	FBDD	MC	
0-1	66105		29	94					0	0						2330	1208
1-2	39176		0	54					0	0						1320	715
2-3	31942		0	44					0	0						1115	595
3-4	31838		0	44					0	0						1115	594
4-5	31290		0	44					0	0						1115	589
5-6	30957		0	44					0	0						1115	592
6-7	60833		29	83					199	0						2455	1194
7-8	90689		29	116					199	0						3570	1787
8-9	227843		72	292					783	2						9290	4543
9-10	206208		73	265					787	2						8610	4172
10-11	180721		72	234					783	2						7245	3584
11-12	183653		72	243					783	2						7575	3590
12-13	161922		72	222					584	2						6440	3109
13-14	159512		72	221					402	1						6235	3001
14-15	188751		72	261					402	1						7145	3491
15-16	200057		72	284					402	1						7680	3634
16-17	202666		72	293					402	1						7680	3631
17-18	234728		101	344					402	1						8365	4122
18-19	274326		102	409					411	1						9847	4758
19-20	209188		72	308					402	1						7455	3660
20-21	138154		42	201					402	1						4895	2445
21-22	108960		42	159					0	0						3985	1945
22-23	108552		42	159					199	0						3985	1945
23-0	74320		29	102					0	0						2765	1349
<b>Total</b>	<b>3242391</b>	<b>0</b>	<b>1166</b>	<b>4518</b>	<b>0</b>	<b>0</b>	<b>0</b>	<b>0</b>	<b>7546</b>	<b>18</b>	<b>0</b>	<b>0</b>	<b>0</b>	<b>0</b>	<b>0</b>	<b>123332</b>	

VKT (Veh-km) Petrol		Type 2 Trunk Road (80km/h)															
EMFAC Index	1	3	4	5	6	7	8	11	12	13	14	15	16	17	18	19	
Hour	PC	taxi	LGV3	LGV4	LGV6	HGV7	HGV8	PLB	PV4	PV5	NFB6	NFB7	NFB8	FBSD	FBDD	MC	
0-1	49755		23	70					62	0						1755	915
1-2	27337		0	37					62	0						860	496
2-3	24644		0	34					0	0						790	451
3-4	23857		0	31					0	0						790	445
4-5	23439		0	31					0	0						790	444
5-6	23275		0	31					0	0						790	443
6-7	44986		23	61					318	0						1940	888
7-8	67887		23	91					380	0						2660	1338
8-9	173930		51	230					699	1						6945	3468
9-10	153702		54	201					712	2						6365	3112
10-11	133952		51	182					699	1						5320	2667
11-12	137258		51	187					699	1						5390	2682
12-13	117942		51	163					380	1						4670	2274
13-14	119883		51	165					380	1						4415	2250
14-15	144567		51	202					442	1						5495	2668
15-16	149983		51	218					442	1						5380	2728
16-17	152707		55	226					442	1						5450	2740
17-18	178719		79	270					442	1						6345	3161
18-19	211851		81	320					534	2						7433	3692
19-20	159592		55	242					442	1						5625	2813
20-21	106197		28	160					442	1						3695	1891
21-22	81499		28	124					62	0						2975	1460
22-23	79517		28	120					380	0						2975	1440
23-0	56785		28	80					62	0						1825	1032
<b>Total</b>	<b>2443265</b>	<b>0</b>	<b>860</b>	<b>3476</b>	<b>0</b>	<b>0</b>	<b>0</b>	<b>0</b>	<b>8083</b>	<b>19</b>	<b>0</b>	<b>0</b>	<b>0</b>	<b>0</b>	<b>0</b>	<b>90678</b>	

VKT (Veh-km) Petrol		Type 3 Trunk Road (50km/h)															
EMFAC Index	1	3	4	5	6	7	8	11	12	13	14	15	16	17	18	19	
Hour	PC	taxi	LGV3	LGV4	LGV6	HGV7	HGV8	PLB	PV4	PV5	NFB6	NFB7	NFB8	FBSD	FBDD	MC	
0-1	367461		155	999					4949	13						21043	10094
1-2	264343		109	741					3103	8						14963	7415
2-3	231905		100	672					3925	9						14123	6849
3-4	195096		87	570					2554	6						11975	5717
4-5	169066		58	453					2605	7						9223	5003
5-6	161588		40	414					1663	3						7968	4606
6-7	225498		51	589					2567	10						12618	6326
7-8	441653		198	1100					7709	26						26680	12585
8-9	773988		295	1760					13297	47						41913	21814
9-10	772325		390	1850					13735	50						43254	22307
10-11	720456		316	1780					13346	45						40820	20840
11-12	719560		316	1776					12689	43						40598	20429
12-13	690381		320	1698					11355	36						38245	19248
13-14	706295		309	1755					10013	31						38683	19307
14-15	737699		375	1872					10400	29						41863	19827
15-16	791741		433	1927					10179	26						44030	20633
16-17	813864		443	1966					10551	23						44150	20624
17-18	850376		423	1984					9964	21						44888	20779
18-19	983654		479	2120					10893	26						47603	22933
19-20	927075		426	2049					9655	24						46795	21951
20-21	748941		402	1697					8136	22						36648	18040
21-22	682911		386	1585					8160	20						35300	17054
22-23	590721		274	1436					6504	19						33298	15143
23-0	571785		266	1392					6532	20						29205	14515
<b>Total</b>	14138384	0	6648	34184	0	0	0	0	194485	562	0	0	0	0	0	765879	

VKT (Veh-km) Petrol		Type 4 Local Road (50km/h)															
EMFAC Index	1	3	4	5	6	7	8	11	12	13	14	15	16	17	18	19	
Hour	PC	taxi	LGV3	LGV4	LGV6	HGV7	HGV8	PLB	PV4	PV5	NFB6	NFB7	NFB8	FBSD	FBDD	MC	
0-1	37259		6	108					128	0						1978	926
1-2	29764		0	95					128	0						1818	770
2-3	22080		0	67					128	0						1125	572
3-4	21268		0	71					128	0						1125	559
4-5	15010		0	43					128	0						635	383
5-6	16920		0	53					0	0						490	416
6-7	18784		0	61					0	0						490	466
7-8	29012		6	84					0	0						880	726
8-9	47796		34	143					829	2						2170	1291
9-10	64198		53	208					986	3						3059	1735
10-11	61826		34	193					829	2						2975	1677
11-12	61751		24	188					829	2						2730	1640
12-13	57773		24	173					829	2						2725	1545
13-14	56218		24	162					829	2						2613	1489
14-15	58408		21	168					829	2						2763	1526
15-16	62685		12	165					336	1						2875	1552
16-17	62966		12	159					0	0						2855	1511
17-18	71357		12	160					0	0						2965	1668
18-19	99703		33	165					329	2						3583	2151
19-20	92402		23	163					142	3						3570	2015
20-21	78093		23	149					142	1						3245	1728
21-22	65371		23	133					0	1						2875	1487
22-23	59454		20	132					0	1						2545	1374
23-0	78332		24	169					142	1						3120	1758
<b>Total</b>	1268431	0	408	3212	0	0	0	0	7693	28	0	0	0	0	0	55207	

VKT (Veh-km) Diesel		Type 1 Expressway (100km/h)														
EMFAC Index	1	3	4	5	6	7	8	11	12	13	14	15	16	17	18	19
Hour	PC	taxi	LGV3	LGV4	LGV6	HGV7	HGV8	PLB	PV4	PV5	NFB6	NFB7	NFB8	FBSD	FBDD	MC
0-1	285	0	426	4696	3120	2230	6690	790	0	0	3345	2230	2005	455	5675	
1-2	169	0	0	2686	1980	1320	3960	468	0	0	1980	1320	1320	0	3505	
2-3	138	0	0	2186	1570	1115	3345	419	0	0	1775	1115	1115	0	2890	
3-4	137	0	0	2186	1570	1115	3345	419	0	0	1775	1115	1115	0	2890	
4-5	135	0	0	2186	1340	1115	3570	396	0	0	1775	1115	1115	0	2890	
5-6	133	0	0	2186	1340	1115	3675	396	0	0	1775	1340	1115	0	2890	
6-7	262	0	426	4147	2790	2455	7575	736	26	0	3675	2890	2230	455	5905	
7-8	391	0	426	5789	3905	4130	11475	1132	26	0	5905	4230	3345	455	9020	
8-9	982	0	1043	14593	9850	10405	29650	2830	102	293	14890	10960	9065	1340	22690	
9-10	889	0	1057	13255	8806	9722	27713	2580	103	298	13961	10384	8370	1340	21135	
10-11	779	0	1043	11696	7905	8025	23180	2239	102	293	11375	8460	7020	1115	17690	
11-12	792	0	1043	12122	8135	7800	22395	2239	102	293	11150	8460	6915	1115	17360	
12-13	698	0	1043	11108	7325	6665	18660	1994	76	293	9225	6665	5550	885	14960	
13-14	688	0	1043	11029	7350	6130	17380	1893	53	202	8690	6460	5120	885	14015	
14-15	814	0	1043	13039	8715	6810	19660	2190	53	202	9830	7145	6030	1115	16065	
15-16	863	0	1043	14186	9355	6790	19490	2342	53	202	9580	7245	5805	1115	16350	
16-17	874	0	1043	14637	9910	6565	18705	2342	53	202	9250	7020	5350	1115	16020	
17-18	1012	0	1469	17191	11605	6915	20425	2635	53	202	9830	7475	6035	1115	17735	
18-19	1183	0	1478	20438	13684	7811	22780	3084	54	213	10866	8302	6607	1115	20070	
19-20	902	0	1043	15382	10240	6005	17920	2420	53	202	8465	6460	5245	1115	15690	
20-21	596	0	618	10039	6565	4335	12470	1551	53	202	5905	4560	3675	660	10570	
21-22	470	0	618	7931	5200	3650	9965	1229	0	0	4765	3650	2990	660	8520	
22-23	468	0	618	7931	5200	3650	10295	1229	26	0	4765	3650	2990	660	8520	
23-0	320	0	426	5098	3425	2435	7180	862	0	0	3650	2535	2210	455	5965	
<b>Total</b>	13979	0	16949	225739	150885	118308	341504	38414	985	3095	168202	124787	102337	17170	279020	0

VKT (Veh-km) Diesel		Type 2 Trunk Road (80km/h)														
EMFAC Index	1	3	4	5	6	7	8	11	12	13	14	15	16	17	18	19
Hour	PC	taxi	LGV3	LGV4	LGV6	HGV7	HGV8	PLB	PV4	PV5	NFB6	NFB7	NFB8	FBSD	FBDD	MC
0-1	215	0	337	3510	2185	1580	4845	610	8	31	2230	1870	1510	360	3915	
1-2	118	0	0	1858	1290	860	2685	354	8	31	1220	790	790	0	1940	
2-3	106	0	0	1721	1150	790	2545	305	0	0	1150	790	720	0	1870	
3-4	103	0	0	1549	1150	790	2730	305	0	0	1150	975	720	0	1870	
4-5	101	0	0	1549	1150	790	2730	305	0	0	1150	1150	720	0	1870	
5-6	100	0	0	1549	1150	790	2730	305	0	0	1150	1150	720	0	1870	
6-7	194	0	337	3029	1940	1940	5390	593	42	31	2660	2125	1510	360	4100	
7-8	293	0	337	4569	2730	2915	8305	898	50	31	3995	3205	2415	360	6155	
8-9	750	0	739	11490	7805	7560	22125	2265	91	253	10870	8280	6700	1080	16455	
9-10	663	0	779	10024	6693	6973	20207	2043	93	269	9934	7698	6007	1080	14725	
10-11	578	0	739	9088	6180	5760	16540	1796	91	222	8165	6295	5005	895	12485	
11-12	592	0	739	9328	6240	5575	16355	1796	91	222	7910	6110	4645	895	12300	
12-13	508	0	739	8157	5345	4670	13290	1557	50	222	6470	4960	3740	720	10140	
13-14	517	0	739	8260	5345	4240	12605	1505	50	222	6040	4530	3740	720	9885	
14-15	623	0	739	10093	6600	5135	14510	1760	58	222	6935	5250	4275	720	11500	
15-16	647	0	739	10882	6985	4845	14350	1868	58	222	6750	5065	3915	720	11315	
16-17	658	0	805	11304	7345	4660	13805	1868	58	222	6390	4880	3915	720	11130	
17-18	771	0	1141	13480	8670	5195	15410	2121	58	222	7100	5240	4265	895	12735	
18-19	913	0	1171	15989	10554	5820	17047	2483	70	259	7786	5915	4681	895	14235	
19-20	688	0	805	12078	8020	4475	13075	1926	58	222	6020	4520	3730	720	10760	
20-21	458	0	402	7975	5335	3080	8960	1258	58	191	4160	3195	2405	535	7460	
21-22	351	0	402	6211	4080	2545	6985	962	8	31	3265	2475	1870	360	5670	
22-23	343	0	402	5970	3895	2545	7170	962	50	31	3265	2475	2045	360	5670	
23-0	245	0	402	4000	2685	1650	4985	701	8	31	2300	1755	1325	360	3985	
<b>Total</b>	10534	0	12495	173663	114522	85183	249379	30544	1055	3184	118065	90698	71369	12755	194040	0

VKT (Veh-km) Diesel		Type 3 Trunk Road (50km/h)														
EMFAC Index	1	3	4	5	6	7	8	11	12	13	14	15	16	17	18	19
Hour	PC	taxi	LGV3	LGV4	LGV6	HGV7	HGV8	PLB	PV4	PV5	NFB6	NFB7	NFB8	FBSD	FBDD	MC
0-1	1584	0	2248	49894	32210	14478	41685	7287	646	2159	15060	11763	7455	4635	85255	
1-2	1140	0	1579	37014	23998	10418	32550	6012	405	1356	10263	7978	4825	3830	66553	
2-3	1000	0	1457	33590	22025	10600	30933	6043	512	1587	10308	7790	4410	3550	64568	
3-4	841	0	1265	28460	18385	9285	27010	5100	333	1006	9150	6738	3663	2680	53870	
4-5	729	0	837	22627	14503	7488	22390	4378	340	1131	8510	6100	3005	2510	50515	
5-6	697	0	575	20696	13530	6825	21695	3956	217	546	8238	6648	3368	1753	39718	
6-7	972	0	739	29433	19058	10770	32085	5013	335	1723	12905	10120	5375	2273	46915	
7-8	1904	0	2872	54975	36263	20843	64240	9298	1006	4389	26718	20978	13670	4430	77328	
8-9	3337	0	4292	87932	58283	38390	113080	14910	1735	7933	52908	42893	27123	7360	127850	
9-10	3330	0	5665	92409	62064	40179	116469	15651	1793	8499	56007	45839	29213	7640	131748	
10-11	3106	0	4592	88945	59348	36870	105275	15523	1742	7652	50218	39738	26423	7810	127705	
11-12	3102	0	4592	88712	58895	35060	99310	14877	1656	7275	46375	36440	25243	7810	123563	
12-13	2977	0	4652	84822	56835	30870	89785	14317	1482	6105	40810	32195	23163	7233	116613	
13-14	3045	0	4489	87680	57390	30140	86905	13963	1307	5325	37008	29708	21033	7458	124223	
14-15	3181	0	5448	93518	61770	29828	86980	14063	1357	4996	35080	27698	20438	7443	126083	
15-16	3414	0	6297	96298	64940	30400	85345	13977	1329	4371	33788	26113	18918	7523	124283	
16-17	3509	0	6442	98219	65015	27833	80095	13315	1377	3957	30648	24350	18253	7433	121225	
17-18	3666	0	6142	99136	65853	26045	75055	12371	1301	3620	27733	21380	17105	7193	117423	
18-19	4241	0	6956	105904	71236	26092	74172	12128	1422	4486	28038	22034	18891	7128	116400	
19-20	3997	0	6189	102351	68550	25213	73045	11927	1260	4093	28123	22035	17780	7128	113353	
20-21	3229	0	5843	84766	56543	21985	62433	10355	1062	3716	25173	19465	15710	5698	96130	
21-22	2944	0	5604	79192	52590	20768	61635	10091	1065	3381	24415	19753	15630	6055	100310	
22-23	2547	0	3986	71719	47600	19230	57553	9465	849	3190	22235	17620	13523	5695	95653	
23-0	2465	0	3859	69565	46875	18298	54978	8755	853	3443	21198	17880	13373	5595	92785	
<b>Total</b>	60957	0	96622	1707858	1133756	547904	1594701	252776	25383	95938	660903	523251	367583	137858	2340063	0

VKT (Veh-km) Diesel		Type 4 Local Road (50km/h)														
EMFAC Index	1	3	4	5	6	7	8	11	12	13	14	15	16	17	18	19
Hour	PC	taxi	LGV3	LGV4	LGV6	HGV7	HGV8	PLB	PV4	PV5	NFB6	NFB7	NFB8	FBSD	FBDD	MC
0-1	161	0	89	5375	4040	1238	3693	911	17	64	865	700	2153	0	1445	
1-2	128	0	0	4762	3075	1238	3645	924	17	64	705	540	1308	0	730	
2-3	95	0	0	3370	2393	875	2983	695	17	64	540	475	878	0	730	
3-4	92	0	0	3527	2338	875	3048	699	17	64	540	475	878	0	730	
4-5	65	0	0	2135	1380	465	1773	509	17	64	375	310	813	0	730	
5-6	73	0	0	2652	1598	375	1933	453	0	0	230	165	838	0	730	
6-7	81	0	0	3049	2158	440	2190	453	0	0	230	165	1340	0	730	
7-8	125	0	89	4184	3018	700	3260	605	0	0	720	555	2008	0	2055	
8-9	206	0	501	7169	5328	1910	6138	1076	108	343	2305	1625	3438	165	4165	
9-10	277	0	766	10381	7358	2734	8218	1429	129	516	3027	2316	5087	165	4125	
10-11	267	0	501	9620	6938	2238	8140	1647	108	414	2800	2020	3928	165	4165	
11-12	266	0	351	9407	6335	2238	7388	1569	108	414	2635	1855	3763	165	4205	
12-13	249	0	351	8630	5800	2238	7143	1496	108	343	2390	1690	3603	165	4285	
13-14	242	0	351	8095	5875	2013	6483	1457	108	343	2325	1578	3438	165	4325	
14-15	252	0	299	8399	5855	2063	6210	1477	108	343	2355	1655	3503	165	4310	
15-16	270	0	178	8262	5855	1798	5500	1381	44	211	1893	1413	3583	0	4350	
16-17	271	0	178	7944	5520	1568	4920	1232	0	71	1413	1043	3648	0	4430	
17-18	308	0	178	7980	5605	1248	4605	1338	0	71	1973	1513	4310	0	4470	
18-19	430	0	486	8247	5973	1394	3788	1066	43	388	2302	2004	8119	0	4510	
19-20	398	0	327	8125	5808	1343	4083	1008	18	440	2260	2035	7590	0	4470	
20-21	337	0	327	7446	5330	1343	3988	887	18	192	2023	1763	6270	0	3700	
21-22	282	0	327	6664	4723	1343	3988	885	0	121	1928	1518	5160	0	3715	
22-23	256	0	290	6600	4558	1343	4323	885	0	121	1553	1218	4423	0	2945	
23-0	338	0	344	8448	5908	1455	5130	924	18	192	2070	1633	6543	0	2175	
<b>Total</b>	5469	0	5932	160471	112764	34468	112564	25008	1004	4842	39455	30260	86613	1155	72225	0

VKT (Veh-km) LPG		Type 1 Expressway (100km/h)														
EMFAC Index	1	3	4	5	6	7	8	11	12	13	14	15	16	17	18	19
Hour	PC	taxi	LGV3	LGV4	LGV6	HGV7	HGV8	PLB	PV4	PV5	NFB6	NFB7	NFB8	FBSD	FBDD	MC
0-1		17715						2555	0	0						
1-2		10765						1512	0	0						
2-3		9350						1356	0	0						
3-4		9350						1356	0	0						
4-5		9575						1279	0	0						
5-6		9805						1279	0	0						
6-7		19840						2379	0	0						
7-8		30200						3658	0	0						
8-9		77785						9145	0	366						
9-10		72958						8340	0	373						
10-11		60860						7236	0	366						
11-12		59190						7236	0	366						
12-13		49660						6446	0	366						
13-14		46345						6117	0	252						
14-15		52390						7080	0	252						
15-16		52690						7568	0	252						
16-17		51125						7568	0	252						
17-18		55825						8515	0	252						
18-19		62756						9966	0	266						
19-20		49350						7820	0	252						
20-21		33760						5014	0	252						
21-22		27720						3971	0	0						
22-23		27595						3971	0	0						
23-0		20370						2788	0	0						
<b>Total</b>	0	916978	0	0	0	0	0	124156	0	3865	0	0	0	0	0	0

VKT (Veh-km) LPG		Type 2 Trunk Road (80km/h)														
EMFAC Index	1	3	4	5	6	7	8	11	12	13	14	15	16	17	18	19
Hour	PC	taxi	LGV3	LGV4	LGV6	HGV7	HGV8	PLB	PV4	PV5	NFB6	NFB7	NFB8	FBSD	FBDD	MC
0-1		14620						1970	0	39						
1-2		8150						1146	0	39						
2-3		7495						985	0	0						
3-4		7495						985	0	0						
4-5		7680						985	0	0						
5-6		7680						985	0	0						
6-7		15290						1917	0	39						
7-8		23515						2902	0	39						
8-9		60845						7320	0	316						
9-10		56019						6602	0	336						
10-11		46610						5804	0	277						
11-12		45765						5804	0	277						
12-13		38265						5033	0	277						
13-14		36580						4865	0	277						
14-15		41670						5690	0	277						
15-16		42025						6037	0	277						
16-17		40995						6037	0	277						
17-18		45820						6854	0	277						
18-19		52802						8027	0	323						
19-20		41755						6224	0	277						
20-21		28815						4067	0	238						
21-22		22900						3108	0	39						
22-23		22655						3108	0	39						
23-0		17680						2264	0	39						
<b>Total</b>	0	733126	0	0	0	0	0	98721	0	3976	0	0	0	0	0	0

VKT (Veh-km) LPG		Type 3 Trunk Road (50km/h)														
EMFAC Index	1	3	4	5	6	7	8	11	12	13	14	15	16	17	18	19
Hour	PC	taxi	LGV3	LGV4	LGV6	HGV7	HGV8	PLB	PV4	PV5	NFB6	NFB7	NFB8	FBSD	FBDD	MC
0-1		312195						23551	0	2696						
1-2		229185						19433	0	1693						
2-3		214273						19530	0	1981						
3-4		175930						16485	0	1256						
4-5		158285						14152	0	1412						
5-6		147035						12786	0	681						
6-7		195220						16202	0	2152						
7-8		406690						30052	0	5480						
8-9		703983						48192	0	9906						
9-10		721419						50584	0	10612						
10-11		672523						50172	0	9556						
11-12		657855						48085	0	9085						
12-13		617035						46275	0	7624						
13-14		612185						45130	0	6649						
14-15		620918						45452	0	6239						
15-16		647290						45175	0	5458						
16-17		641783						43037	0	4942						
17-18		641760						39984	0	4521						
18-19		704625						39197	0	5602						
19-20		680398						38550	0	5111						
20-21		557955						33468	0	4640						
21-22		536780						32616	0	4222						
22-23		476635						30590	0	3984						
23-0		449783						28297	0	4299						
<b>Total</b>	0	11781736	0	0	0	0	0	816997	0	119802	0	0	0	0	0	0

VKT (Veh-km) LPG		Type 4 Local Road (50km/h)														
EMFAC Index	1	3	4	5	6	7	8	11	12	13	14	15	16	17	18	19
Hour	PC	taxi	LGV3	LGV4	LGV6	HGV7	HGV8	PLB	PV4	PV5	NFB6	NFB7	NFB8	FBSD	FBDD	MC
0-1		29380						2944	0	80						
1-2		24943						2986	0	80						
2-3		18385						2245	0	80						
3-4		17713						2261	0	80						
4-5		12090						1644	0	80						
5-6		13665						1464	0	0						
6-7		15008						1464	0	0						
7-8		23340						1955	0	0						
8-9		39745						3479	0	428						
9-10		53183						4619	0	645						
10-11		53058						5323	0	516						
11-12		52235						5071	0	516						
12-13		49213						4836	0	428						
13-14		47073						4710	0	428						
14-15		48240						4775	0	428						
15-16		49633						4462	0	263						
16-17		48840						3983	0	89						
17-18		54303						4325	0	89						
18-19		68578						3444	0	485						
19-20		63530						3259	0	550						
20-21		54433						2866	0	240						
21-22		46608						2862	0	151						
22-23		43755						2862	0	151						
23-0		55610						2988	0	240						
<b>Total</b>	0	982556	0	0	0	0	0	80827	0	6046	0	0	0	0	0	0

Trips and VKT in 2025

Multiplication Factor = 100

Trips_Petrol		Type 4 Local Road (50km/h)														
EMFAC Index	1	3	4	5	6	7	8	11	12	13	14	15	16	17	18	19
Hour	PC	taxi	LGV3	LGV4	LGV6	HGV7	HGV8	PLB	PV4	PV5	NFB6	NFB7	NFB8	FBSD	FBDD	MC
0-1	17452		1	38					50	0						4177
1-2	14395		0	33					63	0						3955
2-3	10530		0	27					63	0						2535
3-4	10204		0	27					63	0						2419
4-5	7089		0	16					47	0						1192
5-6	8009		0	19					47	0						1192
6-7	8956		0	22					47	0						1192
7-8	13661		1	31					50	0						1951
8-9	22394		2	52					101	0						3791
9-10	29342		4	71					146	0						6056
10-11	28465		2	68					132	0						5322
11-12	28385		1	68					101	0						6403
12-13	26650		1	63					101	0						6169
13-14	25826		1	59					101	0						6210
14-15	26659		1	58					85	0						6210
15-16	28432		1	57					54	0						6590
16-17	28310		1	56					54	0						7694
17-18	31882		1	56					7	0						8337
18-19	43991		4	57					109	0						9126
19-20	40947		2	56					54	0						8944
20-21	34665		2	52					54	0						7501
21-22	29175		2	44					54	0						6578
22-23	26786		2	50					50	0						5503
23-0	35318		3	61					97	0						6847
<b>Total</b>	577524	0	35	1142	0	0	0	0	1732	1	0	0	0	0	0	125894

Trips_LPG		Type 4 Local Road (50km/h)														
EMFAC Index	1	3	4	5	6	7	8	11	12	13	14	15	16	17	18	19
Hour	PC	taxi	LGV3	LGV4	LGV6	HGV7	HGV8	PLB	PV4	PV5	NFB6	NFB7	NFB8	FBSD	FBDD	MC
0-1		2696						359	0	0						
1-2		2386						401	0	0						
2-3		1757						323	0	0						
3-4		1715						319	0	0						
4-5		1143						195	0	0						
5-6		1276						174	0	0						
6-7		1403						200	0	0						
7-8		2176						279	0	2						
8-9		3696						477	0	2						
9-10		4761						605	0	74						
10-11		4753						688	0	33						
11-12		4717						654	0	33						
12-13		4437						641	0	2						
13-14		4248						611	0	2						
14-15		4315						611	0	2						
15-16		4456						588	0	33						
16-17		4350						528	0	33						
17-18		4811						556	0	33						
18-19		5954						444	0	167						
19-20		5553						400	0	191						
20-21		4761						387	0	85						
21-22		4114						368	0	54						
22-23		3893						401	0	54						
23-0		4943						401	0	85						
<b>Total</b>	0	88316	0	0	0	0	0	10608	0	885	0	0	0	0	0	0

Note: Trips only account for cold start of petrol vehicles. There is no cold start for Road type 1 - 3 or 5.

VKT (Veh-km) Petrol		Type 1 Expressway (100km/h)														
EMFAC Index	1	3	4	5	6	7	8	11	12	13	14	15	16	17	18	19
Hour	PC	taxi	LGV3	LGV4	LGV6	HGV7	HGV8	PLB	PV4	PV5	NFB6	NFB7	NFB8	FBSD	FBDD	MC
0-1	70366		9	78					0	0						2890
1-2	43751		2	43					0	0						1525
2-3	35064		0	36					0	0						1115
3-4	34486		0	36					0	0						1115
4-5	34039		0	36					0	0						1220
5-6	33357		0	36					0	0						1220
6-7	66943		9	66					91	0						2890
7-8	98926		9	98					486	0						4110
8-9	247833		19	244					972	1						10490
9-10	232714		19	238					977	1						9585
10-11	202515		19	208					577	0						8340
11-12	204445		20	211					486	0						8340
12-13	179910		17	192					486	0						7205
13-14	175308		17	188					486	0						6895
14-15	204744		20	225					486	0						7805
15-16	215810		24	238					91	0						8240
16-17	217745		24	246					0	0						8135
17-18	249953		26	282					0	0						9145
18-19	290836		30	335					9	0						10527
19-20	222194		26	253					0	0						8235
20-21	146623		15	167					0	0						5450
21-22	117053		11	129					0	0						4310
22-23	116376		11	129					0	0						4310
23-0	80631		11	87					0	0						3095
<b>Total</b>	<b>3521621</b>	<b>0</b>	<b>337</b>	<b>3805</b>	<b>0</b>	<b>0</b>	<b>0</b>	<b>0</b>	<b>5147</b>	<b>3</b>	<b>0</b>	<b>0</b>	<b>0</b>	<b>0</b>	<b>0</b>	<b>136192</b>

VKT (Veh-km) Petrol		Type 2 Trunk Road (80km/h)														
EMFAC Index	1	3	4	5	6	7	8	11	12	13	14	15	16	17	18	19
Hour	PC	taxi	LGV3	LGV4	LGV6	HGV7	HGV8	PLB	PV4	PV5	NFB6	NFB7	NFB8	FBSD	FBDD	MC
0-1	65918		9	100					369	0						2915
1-2	42507		3	73					217	0						2115
2-3	32750		3	48					156	0						1330
3-4	32302		3	48					156	0						1330
4-5	32138		3	45					156	0						1405
5-6	31546		3	45					156	0						1510
6-7	62375		9	90					369	0						3275
7-8	99498		15	158					842	0						5580
8-9	225283		24	312					1371	1						11740
9-10	209247		25	302					1445	1						10720
10-11	187782		24	282					1211	1						9575
11-12	190484		25	289					1211	1						9320
12-13	163366		19	249					963	1						7515
13-14	162222		19	249					903	0						7440
14-15	194633		25	300					1211	0						8520
15-16	200261		28	311					1111	0						8475
16-17	202505		28	317					1111	0						8220
17-18	229980		26	351					955	0						8935
18-19	270641		33	415					1201	0						10023
19-20	202903		26	304					955	0						7575
20-21	145016		19	241					742	0						5670
21-22	112316		13	190					586	0						4595
22-23	111216		13	185					586	0						4670
23-0	79929		13	131					525	0						3450
<b>Total</b>	<b>3286818</b>	<b>0</b>	<b>409</b>	<b>5035</b>	<b>0</b>	<b>0</b>	<b>0</b>	<b>0</b>	<b>18508</b>	<b>7</b>	<b>0</b>	<b>0</b>	<b>0</b>	<b>0</b>	<b>0</b>	<b>145903</b>



VKT (Veh-km) Petrol		Type 3 Trunk Road (50km/h)														
EMFAC Index	1	3	4	5	6	7	8	11	12	13	14	15	16	17	18	19
Hour	PC	taxi	LGV3	LGV4	LGV6	HGV7	HGV8	PLB	PV4	PV5	NFB6	NFB7	NFB8	FBSD	FBDD	MC
0-1	402226		29	823					4995	4						22960
1-2	287216		21	602					3715	2						17025
2-3	248269		21	537					3706	2						15920
3-4	208033		21	458					3164	2						12873
4-5	181264		6	352					2465	1						9870
5-6	172086		6	333					2224	1						8375
6-7	249505		17	475					3810	3						14140
7-8	483317		30	878					8068	6						27953
8-9	839968		40	1381					13341	11						43965
9-10	859025		64	1484					13666	11						45522
10-11	796428		44	1422					12438	9						42308
11-12	801339		65	1451					12045	8						42148
12-13	769731		67	1408					11199	8						41545
13-14	791278		68	1462					11833	7						42865
14-15	825339		69	1554					12011	7						44733
15-16	894384		74	1640					12384	7						47995
16-17	923661		81	1685					11375	6						48665
17-18	967706		90	1717					12351	6						49825
18-19	1121911		105	1847					13195	7						53472
19-20	1051693		91	1776					12143	7						51930
20-21	832343		59	1414					8207	5						39338
21-22	762594		54	1319					8986	5						37473
22-23	657007		61	1210					8632	4						36425
23-0	623046		52	1143					8037	5						31463
<b>Total</b>	<b>15749368</b>	<b>0</b>	<b>1236</b>	<b>28373</b>	<b>0</b>	<b>0</b>	<b>0</b>	<b>0</b>	<b>213991</b>	<b>135</b>	<b>0</b>	<b>0</b>	<b>0</b>	<b>0</b>	<b>0</b>	<b>828785</b>

VKT (Veh-km) Petrol		Type 4 Local Road (50km/h)														
EMFAC Index	1	3	4	5	6	7	8	11	12	13	14	15	16	17	18	19
Hour	PC	taxi	LGV3	LGV4	LGV6	HGV7	HGV8	PLB	PV4	PV5	NFB6	NFB7	NFB8	FBSD	FBDD	MC
0-1	40126		2	86					149	0						1788
1-2	33098		0	75					187	0						1693
2-3	24212		0	62					187	0						1085
3-4	23463		0	60					187	0						1035
4-5	16300		0	35					139	0						510
5-6	18415		0	42					139	0						510
6-7	20592		0	50					139	0						510
7-8	31411		2	71					149	0						835
8-9	51491		6	117					299	0						1623
9-10	67467		11	162					431	0						2592
10-11	65450		6	155					390	0						2278
11-12	65266		3	153					299	0						2740
12-13	61275		3	143					299	0						2640
13-14	59382		3	133					299	0						2658
14-15	61298		3	132					251	0						2658
15-16	65373		3	130					160	0						2820
16-17	65094		3	128					160	0						3293
17-18	73307		3	126					21	0						3568
18-19	101149		9	130					323	0						3905
19-20	94150		6	128					160	1						3828
20-21	79705		6	118					160	0						3210
21-22	67082		6	100					160	0						2815
22-23	61589		4	114					149	0						2355
23-0	81205		6	139					288	0						2930
<b>Total</b>	<b>1327900</b>	<b>0</b>	<b>84</b>	<b>2589</b>	<b>0</b>	<b>0</b>	<b>0</b>	<b>0</b>	<b>5121</b>	<b>3</b>	<b>0</b>	<b>0</b>	<b>0</b>	<b>0</b>	<b>0</b>	<b>53874</b>

VKT (Veh-km) Petrol		Type 5 Trunk Road (70km/h)														
EMFAC Index	1	3	4	5	6	7	8	11	12	13	14	15	16	17	18	19
Hour	PC	taxi	LGV3	LGV4	LGV6	HGV7	HGV8	PLB	PV4	PV5	NFB6	NFB7	NFB8	FBSD	FBDD	MC
0-1	8374		2	28					87	0						625
1-2	8280		2	27					87	0						765
2-3	4204		0	13					0	0						335
3-4	4254		0	13					0	0						335
4-5	4254		0	14					0	0						385
5-6	4344		0	14					0	0						385
6-7	8643		2	24					165	0						865
7-8	17186		2	54					165	0						1775
8-9	25864		3	79					330	0						2780
9-10	25520		4	78					334	0						2614
10-11	25510		3	81					330	0						2445
11-12	25237		5	79					334	0						2255
12-13	20948		5	66					334	0						1820
13-14	20908		5	67					334	0						1680
14-15	24893		5	81					334	0						1780
15-16	24764		5	80					334	0						1680
16-17	24585		5	81					256	0						1490
17-18	24361		6	82					339	0						1350
18-19	28383		7	95					349	0						1392
19-20	20241		3	69					169	0						1010
20-21	20470		3	67					169	0						1110
21-22	16484		3	54					169	0						1060
22-23	16569		3	55					169	0						1060
23-0	12404		3	41					169	0						865
<b>Total</b>	<b>416679</b>	<b>0</b>	<b>76</b>	<b>1344</b>	<b>0</b>	<b>0</b>	<b>0</b>	<b>0</b>	<b>4958</b>	<b>1</b>	<b>0</b>	<b>0</b>	<b>0</b>	<b>0</b>	<b>0</b>	<b>31862</b>

VKT (Veh-km) Diesel		Type 1 Expressway (100km/h)														
EMFAC Index	1	3	4	5	6	7	8	11	12	13	14	15	16	17	18	19
Hour	PC	taxi	LGV3	LGV4	LGV6	HGV7	HGV8	PLB	PV4	PV5	NFB6	NFB7	NFB8	FBSD	FBDD	MC
0-1	344	0	551	5142	3345	2435	7325	846	0	0	3550	2660	2230	660	6110	
1-2	214	0	103	2802	1980	1525	4595	520	0	0	2185	1525	1425	205	3710	
2-3	171	0	0	2399	1775	1220	3775	423	0	0	1775	1220	1115	0	3220	
3-4	169	0	0	2399	1775	1220	3880	423	0	0	1775	1445	1115	0	3220	
4-5	166	0	0	2399	1775	1320	3880	423	0	0	2000	1545	1115	0	3220	
5-6	163	0	0	2399	1675	1545	4335	423	0	0	2000	1545	1115	0	3220	
6-7	327	0	551	4369	2890	2765	8440	822	14	0	4335	3220	2660	660	6645	
7-8	484	0	551	6442	4335	4540	12980	1268	74	198	6540	4765	3880	660	9965	
8-9	1212	0	1101	16016	10490	11350	33440	3187	148	397	16720	12260	10030	1770	25590	
9-10	1138	0	1116	15647	10336	10442	30248	3015	149	402	15111	10899	9110	1545	23480	
10-11	990	0	1101	13657	9000	8420	24970	2513	88	198	12320	9100	7555	1545	19500	
11-12	1000	0	1200	13884	9230	8315	24210	2512	74	198	11990	8770	7330	1545	19170	
12-13	880	0	978	12638	8420	7075	20470	2242	74	198	10065	7530	6315	1090	16360	
13-14	857	0	978	12357	8010	6440	18660	2119	74	198	9330	6665	5450	1090	15210	
14-15	1001	0	1200	14825	9705	7350	20955	2444	74	198	10360	7575	6135	1320	17155	
15-16	1055	0	1426	15657	10345	6995	20785	2518	14	0	10340	7450	6340	1320	17440	
16-17	1065	0	1426	16204	10575	6895	20125	2542	0	0	9780	7125	6010	1320	17010	
17-18	1222	0	1524	18568	12495	7475	21640	2842	0	0	10815	7475	6365	1320	18850	
18-19	1422	0	1760	22057	14574	8266	23890	3294	1	11	11646	8302	7167	1320	20980	
19-20	1086	0	1524	16652	10900	6565	18910	2517	0	0	9450	6565	5580	1320	16475	
20-21	717	0	875	10958	7225	4560	13130	1696	0	0	6230	4560	4005	660	11230	
21-22	572	0	649	8491	5760	3650	10730	1316	0	0	5200	3650	3095	660	9180	
22-23	569	0	649	8491	5530	3755	11160	1341	0	0	5525	3755	3095	660	9285	
23-0	394	0	649	5748	3755	2640	7715	918	0	0	3855	2640	2435	660	6395	
<b>Total</b>	<b>17219</b>	<b>0</b>	<b>19913</b>	<b>250198</b>	<b>165900</b>	<b>126763</b>	<b>370249</b>	<b>42164</b>	<b>783</b>	<b>2000</b>	<b>182897</b>	<b>132247</b>	<b>110672</b>	<b>21330</b>	<b>302620</b>	<b>0</b>

VKT (Veh-km) Diesel		Type 2 Trunk Road (80km/h)														
EMFAC Index	1	3	4	5	6	7	8	11	12	13	14	15	16	17	18	19
Hour	PC	taxi	LGV3	LGV4	LGV6	HGV7	HGV8	PLB	PV4	PV5	NFB6	NFB7	NFB8	FBSD	FBDD	MC
0-1	322	0	531	6545	4170	2475	7435	930	56	0	3020	2230	1870	360	5255	
1-2	208	0	177	4772	3090	1580	5100	631	33	0	1760	1580	1150	0	3375	
2-3	160	0	177	3147	2120	1150	3810	453	24	0	1515	1330	970	0	2845	
3-4	158	0	177	3147	2120	1150	3810	453	24	0	1515	1330	970	0	2845	
4-5	157	0	177	2975	2120	1150	3810	453	24	0	1690	1330	970	0	2950	
5-6	154	0	177	2975	2050	1335	3995	453	24	0	1690	1330	970	0	2950	
6-7	305	0	531	5950	3810	2730	8310	889	56	0	3385	2485	2055	360	5795	
7-8	487	0	885	10412	6585	4425	13455	1514	128	0	5505	4245	3380	360	9540	
8-9	1102	0	1416	20488	13170	10290	30880	3285	209	0	13900	10660	8210	1440	21980	
9-10	1023	0	1458	19853	12733	9343	28047	3136	220	0	12419	9533	7157	1080	19700	
10-11	918	0	1416	18523	12155	8050	24310	2725	184	0	10215	7880	6045	1080	16850	
11-12	931	0	1485	19011	12145	8050	23620	2725	184	0	9855	7625	5790	1080	16485	
12-13	799	0	1126	16346	10420	6610	19580	2364	147	0	7985	5930	4715	720	13705	
13-14	793	0	1126	16381	10455	6285	19010	2314	137	0	7550	5860	4460	720	13200	
14-15	952	0	1485	19745	12860	7365	21995	2699	184	0	8555	6395	4995	720	15530	
15-16	979	0	1657	20469	13175	7250	21765	2705	169	0	8265	6035	4820	720	15235	
16-17	990	0	1657	20823	13350	7250	21145	2747	169	0	7830	5600	4635	720	14870	
17-18	1125	0	1549	23084	14860	7715	22865	3046	145	0	8725	6065	5170	720	16335	
18-19	1323	0	1929	27299	17754	8700	25757	3480	183	0	9411	6740	5586	720	18370	
19-20	992	0	1549	20001	13240	6635	19450	2618	145	0	7290	5165	4270	720	13820	
20-21	709	0	1126	15879	10450	5135	15150	1945	113	0	5245	3735	3130	360	10340	
21-22	549	0	777	12515	8045	4055	11920	1560	89	0	4170	3015	2585	360	8190	
22-23	544	0	777	12170	7860	4055	11990	1560	89	0	4345	3200	2655	360	8190	
23-0	391	0	777	8599	5750	2905	8725	1083	80	0	3085	2480	1870	360	5680	
<b>Total</b>	16071	0	24141	331109	214487	125688	375934	45767	2815	0	148925	111778	88429	12960	264035	0

VKT (Veh-km) Diesel		Type 3 Trunk Road (50km/h)														
EMFAC Index	1	3	4	5	6	7	8	11	12	13	14	15	16	17	18	19
Hour	PC	taxi	LGV3	LGV4	LGV6	HGV7	HGV8	PLB	PV4	PV5	NFB6	NFB7	NFB8	FBSD	FBDD	MC
0-1	1967	0	1721	54087	34735	15538	45435	8492	760	2952	15368	12105	9658	4923	87173	
1-2	1404	0	1269	39576	25240	12325	35578	6921	565	1686	11743	8845	5848	3998	69258	
2-3	1214	0	1269	35318	23703	11713	33120	6755	564	1590	11518	8608	5425	3998	67255	
3-4	1017	0	1214	30147	18930	9890	29513	5861	481	1559	10243	7825	4713	2908	55283	
4-5	886	0	379	23178	14975	7793	24583	4919	375	1139	8773	6580	3698	2628	52113	
5-6	841	0	379	21909	14205	7955	23610	4517	338	1115	8848	6930	3973	2038	40343	
6-7	1220	0	983	31203	20475	12060	34500	6021	580	2489	13833	10728	6873	2623	47663	
7-8	2363	0	1745	57747	37138	24135	69778	11041	1227	4778	28535	23450	14980	4075	80385	
8-9	4107	0	2380	90819	60565	41290	120833	17192	2029	8446	55460	45345	27650	6745	131015	
9-10	4200	0	3770	97603	65017	42101	119241	17684	2079	8528	54874	44819	28477	7025	129598	
10-11	3894	0	2586	93518	62068	37173	107028	17279	1892	7409	47925	38680	25650	6660	125243	
11-12	3918	0	3865	95414	64138	33480	102063	16745	1832	6204	43415	34515	23388	6295	121333	
12-13	3764	0	3943	92562	62075	31140	92845	16047	1703	5923	39565	31818	22278	5758	116430	
13-14	3869	0	4037	96170	63613	31165	90910	16109	1800	5722	37323	30053	21318	6460	125803	
14-15	4036	0	4071	102191	67123	30605	90430	15953	1827	5292	35593	28038	20575	6443	126860	
15-16	4373	0	4351	107857	70495	31410	90630	16450	1884	5773	35268	27498	21013	6530	126783	
16-17	4516	0	4789	110815	72010	29233	87383	15780	1730	5053	32225	25610	19598	6068	123588	
17-18	4732	0	5320	112935	73943	27758	83185	14966	1879	4736	29835	23725	19350	5825	120753	
18-19	5486	0	6200	121489	80282	28316	84704	15155	2007	5638	31232	25096	21511	5580	121020	
19-20	5142	0	5369	116784	76983	27560	83210	14827	1847	5240	30510	24830	20200	5545	118258	
20-21	4070	0	3481	92971	61800	22890	68840	12422	1248	3993	26680	19950	15925	4398	98548	
21-22	3729	0	3201	86756	57215	21928	67933	12093	1367	3556	25095	19920	14973	5025	103990	
22-23	3213	0	3609	79595	52050	21030	63055	11272	1313	3431	23060	18060	13648	4893	98968	
23-0	3046	0	3088	75140	50313	18850	59233	10128	1223	3584	22595	17850	13163	4793	95373	
<b>Total</b>	77009	0	73019	1865783	1229087	577335	1707635	294627	32548	105835	679510	540876	383878	121228	2383028	0

VKT (Veh-km) Diesel		Type 4 Local Road (50km/h)														
EMFAC Index	1	3	4	5	6	7	8	11	12	13	14	15	16	17	18	19
Hour	PC	taxi	LGV3	LGV4	LGV6	HGV7	HGV8	PLB	PV4	PV5	NFB6	NFB7	NFB8	FBSD	FBDD	MC
0-1	196	0	93	5664	4340	883	3773	975	23	0	902	732	2085	0	1245	
1-2	162	0	0	4920	3605	1028	3660	1090	28	0	795	560	1228	0	650	
2-3	118	0	0	4046	2988	1028	3318	878	28	0	500	395	733	0	595	
3-4	115	0	0	3952	2843	983	3285	868	28	0	565	395	833	0	595	
4-5	80	0	0	2325	1580	510	1878	529	21	0	335	230	668	0	595	
5-6	90	0	0	2790	1708	510	1893	473	21	0	335	230	838	0	555	
6-7	101	0	0	3292	2433	510	2085	544	21	0	335	230	1340	0	555	
7-8	154	0	93	4691	3643	948	3993	758	23	5	902	732	2085	0	1665	
8-9	252	0	344	7720	6178	1848	6490	1296	45	5	1849	1417	3164	0	3330	
9-10	330	0	623	10629	8318	2281	8186	1647	66	171	2495	2019	4789	0	3425	
10-11	320	0	344	10185	7850	2265	8378	1872	59	75	2349	1747	3554	0	3465	
11-12	319	0	187	10072	7478	1995	7575	1779	45	75	2244	1647	3489	0	3600	
12-13	300	0	187	9409	7008	1995	7053	1742	45	5	1999	1482	3164	0	3640	
13-14	290	0	187	8774	6778	1835	6368	1661	45	5	1934	1304	3164	0	3735	
14-15	300	0	187	8703	6580	1413	6083	1662	38	5	1704	1252	3099	0	3830	
15-16	320	0	187	8540	6430	1143	5230	1598	24	75	1694	1167	3437	0	3870	
16-17	318	0	187	8407	6035	1143	4900	1435	24	75	1594	1067	3542	0	4005	
17-18	358	0	187	8304	6180	570	4130	1511	3	75	2049	1537	4204	0	4045	
18-19	495	0	510	8525	6293	732	3513	1208	49	382	2402	1939	7989	0	4140	
19-20	460	0	344	8402	5963	680	3808	1087	24	438	2336	1994	7484	0	4100	
20-21	390	0	344	7740	5700	515	3858	1051	24	194	2047	1657	6229	0	3355	
21-22	328	0	344	6585	5163	930	3623	1000	24	124	1992	1477	5054	0	3315	
22-23	301	0	251	7464	5330	1208	4548	1092	23	124	1912	1395	4435	0	2625	
23-0	397	0	361	9109	6680	1320	5210	1092	44	194	2417	1875	6555	0	1935	
<b>Total</b>	6493	0	4962	170249	127099	28268	112831	28848	779	2027	37680	28473	83157	0	62870	0

VKT (Veh-km) Diesel		Type 5 Trunk Road (70km/h)														
EMFAC Index	1	3	4	5	6	7	8	11	12	13	14	15	16	17	18	19
Hour	PC	taxi	LGV3	LGV4	LGV6	HGV7	HGV8	PLB	PV4	PV5	NFB6	NFB7	NFB8	FBSD	FBDD	MC
0-1	41	0	98	1847	1060	480	1350	149	13	22	245	195	195	0	725	
1-2	40	0	98	1798	1060	480	1440	149	13	22	245	195	195	0	815	
2-3	21	0	0	852	435	285	675	80	0	0	100	100	50	0	385	
3-4	21	0	0	852	435	285	675	80	0	0	100	100	50	0	385	
4-5	21	0	0	901	435	285	675	80	0	0	100	100	50	0	385	
5-6	21	0	0	901	435	285	675	80	0	0	100	100	50	0	385	
6-7	42	0	98	1611	1200	480	1250	182	25	44	335	285	285	0	865	
7-8	84	0	98	3546	2115	1050	2690	342	25	44	535	485	385	0	1775	
8-9	126	0	197	5196	3265	1530	4125	524	50	87	870	770	670	0	2780	
9-10	125	0	211	5154	3284	1552	4102	524	51	93	896	794	680	0	2640	
10-11	125	0	197	5294	3225	1530	4035	503	50	87	820	770	670	0	2590	
11-12	123	0	290	5206	3270	1440	4130	503	51	65	680	580	530	0	2450	
12-13	102	0	290	4354	2790	1245	3365	411	51	65	630	580	530	0	2015	
13-14	102	0	290	4408	2795	1155	3275	389	51	65	580	480	480	0	1925	
14-15	122	0	290	5354	3375	1440	3950	425	51	65	630	580	530	0	2075	
15-16	121	0	290	5265	3470	1350	3950	425	51	65	580	480	480	0	1975	
16-17	120	0	290	5359	3470	1350	3955	425	39	44	490	390	390	0	1885	
17-18	119	0	384	5363	3380	1255	3955	404	51	44	490	390	390	0	1745	
18-19	139	0	394	6280	4044	1457	4563	462	53	56	542	438	409	0	1940	
19-20	99	0	192	4511	2850	1060	3280	335	26	22	345	295	245	0	1405	
20-21	100	0	192	4413	2940	1060	3280	335	26	22	345	295	245	0	1405	
21-22	81	0	192	3561	2360	775	2605	299	26	22	295	195	195	0	1255	
22-23	81	0	192	3650	2265	865	2605	299	26	22	345	295	245	0	1355	
23-0	61	0	192	2704	1590	675	1930	241	26	22	245	195	195	0	1060	
<b>Total</b>	2037	0	4475	88379	55548	23369	66535	7644	754	977	10543	9087	8144	0	36220	0

VKT (Veh-km) LPG		Type 1 Expressway (100km/h)														
EMFAC Index	1	3	4	5	6	7	8	11	12	13	14	15	16	17	18	19
Hour	PC	taxi	LGV3	LGV4	LGV6	HGV7	HGV8	PLB	PV4	PV5	NFB6	NFB7	NFB8	FBSD	FBDD	MC
0-1		19675						2704	0	0						
1-2		12370						1665	0	0						
2-3		10320						1352	0	0						
3-4		10545						1352	0	0						
4-5		10650						1352	0	0						
5-6		11105						1352	0	0						
6-7		22640						2628	0	0						
7-8		34635						4057	0	256						
8-9		88290						10193	0	513						
9-10		80063						9640	0	520						
10-11		66605						8037	0	256						
11-12		64630						8033	0	256						
12-13		54565						7168	0	256						
13-14		50325						6776	0	256						
14-15		56515						7816	0	256						
15-16		56820						8052	0	0						
16-17		54835						8128	0	0						
17-18		59915						9088	0	0						
18-19		66766						10536	0	14						
19-20		52985						8048	0	0						
20-21		36280						5424	0	0						
21-22		30215						4209	0	0						
22-23		30420						4289	0	0						
23-0		22310						2937	0	0						
<b>Total</b>	<b>0</b>	<b>1003478</b>	<b>0</b>	<b>0</b>	<b>0</b>	<b>0</b>	<b>0</b>	<b>134836</b>	<b>0</b>	<b>2586</b>	<b>0</b>	<b>0</b>	<b>0</b>	<b>0</b>	<b>0</b>	<b>0</b>

VKT (Veh-km) LPG		Type 2 Trunk Road (80km/h)														
EMFAC Index	1	3	4	5	6	7	8	11	12	13	14	15	16	17	18	19
Hour	PC	taxi	LGV3	LGV4	LGV6	HGV7	HGV8	PLB	PV4	PV5	NFB6	NFB7	NFB8	FBSD	FBDD	MC
0-1		24410						2975	0	141						
1-2		17685						2019	0	141						
2-3		12645						1447	0	39						
3-4		12750						1447	0	39						
4-5		13010						1447	0	39						
5-6		13010						1447	0	39						
6-7		26550						2841	0	141						
7-8		45300						4841	0	383						
8-9		96565						10505	0	766						
9-10		88774						10029	0	787						
10-11		78300						8715	0	564						
11-12		76445						8715	0	524						
12-13		63330						7561	0	524						
13-14		60860						7401	0	485						
14-15		70135						8631	0	485						
15-16		69690						8650	0	282						
16-17		68160						8783	0	282						
17-18		72665						9739	0	282						
18-19		83207						11130	0	329						
19-20		64135						8372	0	180						
20-21		50590						6220	0	141						
21-22		40855						4990	0	141						
22-23		41110						4990	0	180						
23-0		31500						3462	0	141						
<b>Total</b>	<b>0</b>	<b>1221681</b>	<b>0</b>	<b>0</b>	<b>0</b>	<b>0</b>	<b>0</b>	<b>146358</b>	<b>0</b>	<b>7055</b>	<b>0</b>	<b>0</b>	<b>0</b>	<b>0</b>	<b>0</b>	<b>0</b>

VKT (Veh-km) LPG

Type 3 Trunk Road (50km/h)

EMFAC Index	1	3	4	5	6	7	8	11	12	13	14	15	16	17	18	19
Hour	PC	taxi	LGV3	LGV4	LGV6	HGV7	HGV8	PLB	PV4	PV5	NFB6	NFB7	NFB8	FBSD	FBDD	MC
0-1		332250						27158	0	3817						
1-2		243523						22132	0	2179						
2-3		225090						21602	0	2055						
3-4		184278						18742	0	2016						
4-5		165535						15731	0	1472						
5-6		152370						14445	0	1441						
6-7		208385						19256	0	3218						
7-8		429073						35307	0	6176						
8-9		734958						54978	0	10918						
9-10		737562						56551	0	11025						
10-11		686808						55258	0	9579						
11-12		678608						53548	0	8020						
12-13		642850						51316	0	7657						
13-14		644505						51516	0	7398						
14-15		656305						51017	0	6841						
15-16		693788						52607	0	7463						
16-17		695705						50463	0	6533						
17-18		703125						47859	0	6123						
18-19		778125						48465	0	7288						
19-20		747635						47416	0	6774						
20-21		603148						39723	0	5162						
21-22		579255						38674	0	4597						
22-23		514058						36046	0	4435						
23-0		477310						32387	0	4634						
<b>Total</b>	0	12514245	0	0	0	0	0	942198	0	136821	0	0	0	0	0	0

VKT (Veh-km) LPG

Type 4 Local Road (50km/h)

EMFAC Index	1	3	4	5	6	7	8	11	12	13	14	15	16	17	18	19
Hour	PC	taxi	LGV3	LGV4	LGV6	HGV7	HGV8	PLB	PV4	PV5	NFB6	NFB7	NFB8	FBSD	FBDD	MC
0-1		32178						3120	0	0						
1-2		28475						3487	0	0						
2-3		20968						2807	0	0						
3-4		20463						2777	0	0						
4-5		13645						1693	0	0						
5-6		15230						1514	0	0						
6-7		16748						1739	0	0						
7-8		25968						2422	0	7						
8-9		44113						4144	0	7						
9-10		56820						5266	0	221						
10-11		56725						5988	0	97						
11-12		56293						5689	0	97						
12-13		52950						5571	0	7						
13-14		50698						5312	0	7						
14-15		51498						5315	0	7						
15-16		53180						5110	0	97						
16-17		51908						4590	0	97						
17-18		57420						4832	0	97						
18-19		71051						3862	0	493						
19-20		66268						3476	0	566						
20-21		56820						3361	0	250						
21-22		49095						3198	0	160						
22-23		46458						3491	0	160						
23-0		58988						3491	0	250						
<b>Total</b>	0	1053953	0	0	0	0	0	92252	0	2620	0	0	0	0	0	0

VKT (Veh-km) LPG

Type 5 Trunk Road (70km/h)

EMFAC Index	1	3	4	5	6	7	8	11	12	13	14	15	16	17	18	19
Hour	PC	taxi	LGV3	LGV4	LGV6	HGV7	HGV8	PLB	PV4	PV5	NFB6	NFB7	NFB8	FBSD	FBDD	MC
0-1		5340						476	0	28						
1-2		5480						476	0	28						
2-3		2880						255	0	0						
3-4		2835						255	0	0						
4-5		2835						255	0	0						
5-6		2925						255	0	0						
6-7		6045						583	0	56						
7-8		12135						1093	0	56						
8-9		18505						1676	0	113						
9-10		18036						1676	0	120						
10-11		17610						1607	0	113						
11-12		17285						1607	0	85						
12-13		14120						1314	0	85						
13-14		13745						1246	0	85						
14-15		16300						1360	0	85						
15-16		15830						1360	0	85						
16-17		15595						1360	0	56						
17-18		14935						1291	0	56						
18-19		17167						1478	0	72						
19-20		12475						1070	0	28						
20-21		12715						1070	0	28						
21-22		10255						956	0	28						
22-23		10535						956	0	28						
23-0		8030						769	0	28						
<b>Total</b>	0	273614	0	0	0	0	0	24446	0	1263	0	0	0	0	0	0

Trips and VKT in 2030

Multiplication Factor = 100

Trips_Petrol		Type 4 Local Road (50km/h)														
EMFAC Index	1	3	4	5	6	7	8	11	12	13	14	15	16	17	18	19
Hour	PC	taxi	LGV3	LGV4	LGV6	HGV7	HGV8	PLB	PV4	PV5	NFB6	NFB7	NFB8	FBSD	FBDD	MC
0-1	19016		0	36					83	0						4177
1-2	15539		0	33					96	0						3955
2-3	11269		0	25					96	0						2535
3-4	11036		0	25					96	0						2419
4-5	7674		0	15					47	0						1192
5-6	8823		0	18					47	0						1192
6-7	9818		0	20					47	0						1192
7-8	14890		0	31					83	0						1951
8-9	24412		1	51					166	0						3978
9-10	31902		1	69					216	0						6267
10-11	30812		1	67					197	0						5322
11-12	30573		1	64					166	0						6590
12-13	28895		0	60					166	0						6169
13-14	27895		0	57					166	0						6210
14-15	28798		0	55					117	0						6210
15-16	30707		0	56					87	0						6590
16-17	30707		0	52					87	0						7694
17-18	34751		0	54					7	0						8710
18-19	49869		1	54					124	0						9516
19-20	46053		1	54					54	0						8944
20-21	38224		1	48					54	0						7501
21-22	32186		1	42					101	0						6578
22-23	30225		0	46					83	0						6274
23-0	40570		1	59					130	0						7221
<b>Total</b>	<b>634642</b>	<b>0</b>	<b>8</b>	<b>1092</b>	<b>0</b>	<b>0</b>	<b>0</b>	<b>0</b>	<b>2514</b>	<b>0</b>	<b>0</b>	<b>0</b>	<b>0</b>	<b>0</b>	<b>0</b>	<b>128388</b>

Trips_LPG		Type 4 Local Road (50km/h)														
EMFAC Index	1	3	4	5	6	7	8	11	12	13	14	15	16	17	18	19
Hour	PC	taxi	LGV3	LGV4	LGV6	HGV7	HGV8	PLB	PV4	PV5	NFB6	NFB7	NFB8	FBSD	FBDD	MC
0-1		2909						365	0	0						
1-2		2499						401	0	0						
2-3		1807						329	0	0						
3-4		1801						325	0	0						
4-5		1223						195	0	0						
5-6		1374						174	0	0						
6-7		1501						200	0	0						
7-8		2334						284	0	2						
8-9		3960						488	0	33						
9-10		5099						617	0	83						
10-11		5059						700	0	33						
11-12		5020						666	0	33						
12-13		4681						647	0	33						
13-14		4523						622	0	33						
14-15		4575						623	0	33						
15-16		4715						594	0	33						
16-17		4601						534	0	33						
17-18		5156						556	0	33						
18-19		6648						444	0	192						
19-20		6198						406	0	192						
20-21		5181						387	0	159						
21-22		4493						368	0	70						
22-23		4286						407	0	54						
23-0		5563						407	0	192						
<b>Total</b>	<b>0</b>	<b>95206</b>	<b>0</b>	<b>0</b>	<b>0</b>	<b>0</b>	<b>0</b>	<b>10738</b>	<b>0</b>	<b>1240</b>	<b>0</b>	<b>0</b>	<b>0</b>	<b>0</b>	<b>0</b>	<b>0</b>

Note: Trips only account for cold start of petrol vehicles. There is no cold start for Road type 1 - 3 or 5.



VKT (Veh-km)_ Petrol		Type 1 Expressway (100km/h)														
EMFAC Index	1	3	4	5	6	7	8	11	12	13	14	15	16	17	18	19
Hour	PC	taxi	LGV3	LGV4	LGV6	HGV7	HGV8	PLB	PV4	PV5	NFB6	NFB7	NFB8	FBSD	FBDD	MC
0-1	74338		2	69					199	0						2890
1-2	45368		0	44					0	0						1750
2-3	36144		0	35					0	0						1445
3-4	35472		0	35					0	0						1445
4-5	35567		0	32					0	0						1445
5-6	35243		0	32					0	0						1445
6-7	70004		2	65					289	0						2995
7-8	104119		2	93					484	0						4440
8-9	259555		4	226					967	0						11150
9-10	244212		4	219					972	0						10246
10-11	213113		4	188					773	0						8775
11-12	215038		4	197					682	0						8670
12-13	189829		4	177					484	0						7535
13-14	183914		4	174					484	0						7225
14-15	215844		4	203					682	0						8030
15-16	226983		5	216					488	0						8240
16-17	229242		5	223					397	0						8240
17-18	263122		5	256					397	0						9145
18-19	307171		6	304					408	0						10533
19-20	234724		5	231					397	0						8235
20-21	154476		3	152					199	0						5450
21-22	122865		2	120					199	0						4310
22-23	122312		2	117					199	0						4415
23-0	84452		2	82					199	0						3095
<b>Total</b>	<b>3703107</b>	<b>0</b>	<b>72</b>	<b>3489</b>	<b>0</b>	<b>0</b>	<b>0</b>	<b>0</b>	<b>8899</b>	<b>0</b>	<b>0</b>	<b>0</b>	<b>0</b>	<b>0</b>	<b>0</b>	<b>141149</b>

VKT (Veh-km)_ Petrol		Type 2 Trunk Road (80km/h)														
EMFAC Index	1	3	4	5	6	7	8	11	12	13	14	15	16	17	18	19
Hour	PC	taxi	LGV3	LGV4	LGV6	HGV7	HGV8	PLB	PV4	PV5	NFB6	NFB7	NFB8	FBSD	FBDD	MC
0-1	69407		2	90					367	0						3195
1-2	44388		1	68					216	0						2300
2-3	33970		1	45					155	0						1690
3-4	33194		1	45					155	0						1870
4-5	32920		1	39					155	0						1870
5-6	32940		1	39					155	0						1870
6-7	65412		2	82					367	0						3380
7-8	103661		3	142					838	0						6150
8-9	235754		5	281					1365	0						12670
9-10	219613		5	270					1439	0						11730
10-11	197018		5	255					1205	0						10320
11-12	199361		5	261					1205	0						10140
12-13	170740		4	226					959	0						8335
13-14	170317		4	225					898	0						8085
14-15	204257		5	274					1205	0						9340
15-16	209401		6	282					1106	0						8935
16-17	212267		6	289					1106	0						8755
17-18	241754		6	318					950	0						9465
18-19	284147		7	377					1199	0						10746
19-20	212884		6	278					950	0						8210
20-21	152636		4	219					739	0						6205
21-22	118785		3	170					583	0						4950
22-23	117387		3	168					583	0						5130
23-0	84755		3	118					523	0						3805
<b>Total</b>	<b>3446968</b>	<b>0</b>	<b>87</b>	<b>4562</b>	<b>0</b>	<b>0</b>	<b>0</b>	<b>0</b>	<b>18424</b>	<b>1</b>	<b>0</b>	<b>0</b>	<b>0</b>	<b>0</b>	<b>0</b>	<b>159145</b>

VKT (Veh-km) Petrol		Type 3 Trunk Road (50km/h)														
EMFAC Index	1	3	4	5	6	7	8	11	12	13	14	15	16	17	18	19
Hour	PC	taxi	LGV3	LGV4	LGV6	HGV7	HGV8	PLB	PV4	PV5	NFB6	NFB7	NFB8	FBSD	FBDD	MC
0-1	424623		7	745					5248	1						24680
1-2	302316		5	542					3892	0						17630
2-3	260617		5	492					3883	0						16370
3-4	218739		4	415					3149	0						13103
4-5	191173		1	321					2704	0						9870
5-6	180456		1	305					2507	0						8445
6-7	263475		4	434					3792	0						14610
7-8	508324		7	801					8587	1						29193
8-9	880219		10	1272					14245	2						46115
9-10	900634		15	1357					14534	2						47699
10-11	836155		11	1310					13139	1						44703
11-12	840398		16	1322					12802	1						44495
12-13	807028		16	1293					11809	1						44018
13-14	828170		16	1335					12461	1						45483
14-15	866097		16	1420					12560	1						47520
15-16	937654		18	1497					12737	1						50978
16-17	968748		19	1534					11794	1						51840
17-18	1014996		22	1566					12673	1						52925
18-19	1188824		25	1692					13620	1						57002
19-20	1112797		22	1618					12487	1						55355
20-21	876647		14	1295					8580	1						41760
21-22	802011		13	1204					9507	1						39660
22-23	694365		14	1102					8813	1						38268
23-0	664820		13	1050					8321	1						34600
<b>Total</b>	16569285	0	294	25922	0	0	0	0	223841	19	0	0	0	0	0	876319

VKT (Veh-km) Petrol		Type 4 Local Road (50km/h)														
EMFAC Index	1	3	4	5	6	7	8	11	12	13	14	15	16	17	18	19
Hour	PC	taxi	LGV3	LGV4	LGV6	HGV7	HGV8	PLB	PV4	PV5	NFB6	NFB7	NFB8	FBSD	FBDD	MC
0-1	43724		0	82					246	0						1788
1-2	35729		0	75					283	0						1693
2-3	25910		0	56					283	0						1085
3-4	25375		0	56					283	0						1035
4-5	17644		0	33					138	0						510
5-6	20286		0	42					138	0						510
6-7	22574		0	46					138	0						510
7-8	34236		0	71					246	0						835
8-9	56131		1	116					492	0						1703
9-10	73352		2	157					639	0						2682
10-11	70845		1	151					582	0						2278
11-12	70295		1	144					492	0						2820
12-13	66437		1	136					492	0						2640
13-14	64139		1	129					492	0						2658
14-15	66216		1	126					347	0						2658
15-16	70604		1	126					256	0						2820
16-17	70604		1	117					256	0						3293
17-18	79902		1	122					21	0						3728
18-19	114664		2	123					366	0						4072
19-20	105890		1	122					159	0						3828
20-21	87887		1	109					159	0						3210
21-22	74004		1	95					297	0						2815
22-23	69497		1	105					246	0						2685
23-0	93283		1	134					384	0						3090
<b>Total</b>	1459229	0	19	2474	0	0	0	0	7433	1	0	0	0	0	0	54942

VKT (Veh-km) Petrol		Type 5 Trunk Road (70km/h)														
EMFAC Index	1	3	4	5	6	7	8	11	12	13	14	15	16	17	18	19
Hour	PC	taxi	LGV3	LGV4	LGV6	HGV7	HGV8	PLB	PV4	PV5	NFB6	NFB7	NFB8	FBSD	FBDD	MC
0-1	8801		0	24					168	0						625
1-2	8851		0	24					168	0						765
2-3	4398		0	13					0	0						335
3-4	4448		0	13					0	0						335
4-5	4443		0	12					0	0						385
5-6	4443		0	12					0	0						385
6-7	9025		1	24					246	0						865
7-8	18134		1	48					246	0						1870
8-9	27288		1	72					492	0						2970
9-10	27014		1	71					497	0						2806
10-11	26885		1	74					492	0						2635
11-12	26666		1	72					415	0						2445
12-13	22040		1	61					415	0						1915
13-14	22099		1	61					415	0						1775
14-15	26368		1	74					415	0						1875
15-16	26189		1	73					415	0						1775
16-17	25970		1	74					337	0						1490
17-18	25885		1	75					337	0						1350
18-19	30067		1	87					348	0						1397
19-20	21572		1	62					168	0						1010
20-21	21662		1	62					168	0						1110
21-22	17433		1	49					168	0						1060
22-23	17433		1	50					168	0						1060
23-0	13209		1	37					168	0						960
<b>Total</b>	440321	0	20	1223	0	0	0	0	6249	0	0	0	0	0	0	33199

VKT (Veh-km) Diesel		Type 1 Expressway (100km/h)														
EMFAC Index	1	3	4	5	6	7	8	11	12	13	14	15	16	17	18	19
Hour	PC	taxi	LGV3	LGV4	LGV6	HGV7	HGV8	PLB	PV4	PV5	NFB6	NFB7	NFB8	FBSD	FBDD	MC
0-1	372	0	558	5256	3450	2660	7555	844	31	0	3775	2890	2230	660	6440	
1-2	227	0	105	3361	2085	1525	4930	520	0	0	2185	1980	1425	205	4040	
2-3	181	0	0	2625	1775	1220	4110	422	0	0	2000	1675	1115	0	3320	
3-4	178	0	0	2625	1775	1445	4110	422	0	0	2000	1675	1115	0	3320	
4-5	178	0	0	2403	1775	1545	4335	422	0	0	2105	1775	1115	0	3320	
5-6	177	0	0	2403	1675	1545	4335	422	0	0	2105	1775	1115	0	3320	
6-7	351	0	558	4930	3220	3220	8875	844	46	0	4440	3220	2660	660	7200	
7-8	521	0	558	7007	4440	4765	13640	1290	76	198	6645	5100	4335	660	10625	
8-9	1300	0	1116	17154	11150	12260	35220	3229	153	395	17380	13380	10940	2230	26910	
9-10	1223	0	1132	16568	11001	10898	31801	3057	153	401	15772	12125	9565	1775	24575	
10-11	1067	0	1116	14237	9435	9100	26295	2556	122	198	12755	9995	8110	1775	20820	
11-12	1077	0	1216	14913	9560	8770	25305	2611	108	198	12425	9665	7885	1775	20390	
12-13	951	0	991	13443	8750	7530	21360	2287	76	198	10500	8195	6415	1320	17225	
13-14	921	0	991	13161	8340	6665	19550	2219	76	198	9660	7560	6005	1320	16075	
14-15	1081	0	1216	15407	10035	7575	21950	2543	108	198	10465	8365	6690	1320	18375	
15-16	1137	0	1445	16359	10900	7450	21780	2617	77	0	10445	8115	6440	1320	18660	
16-17	1148	0	1445	16912	11130	7125	21020	2617	63	0	9885	7910	6335	1320	18225	
17-18	1318	0	1545	19384	12720	7475	22760	2996	63	0	11025	8595	6795	1320	19845	
18-19	1538	0	1785	23013	15035	8267	25014	3448	64	13	11864	9430	7370	1320	22300	
19-20	1176	0	1545	17459	11125	6565	19925	2672	63	0	9555	7580	6005	1320	17465	
20-21	774	0	887	11533	7450	4560	13690	1773	31	0	6440	5120	4105	660	11890	
21-22	615	0	658	9060	5760	3650	11390	1394	31	0	5530	4315	3425	660	9615	
22-23	613	0	658	8838	5530	3755	11720	1419	31	0	5735	4315	3650	660	10045	
23-0	423	0	658	6213	3755	2640	8375	942	31	0	3960	3200	2535	660	7055	
<b>Total</b>	18547	0	20180	264264	171872	132210	389045	43567	1403	1995	188652	147955	117380	22940	321055	0

VKT (Veh-km) Diesel		Type 2 Trunk Road (80km/h)														
EMFAC Index	1	3	4	5	6	7	8	11	12	13	14	15	16	17	18	19
Hour	PC	taxi	LGV3	LGV4	LGV6	HGV7	HGV8	PLB	PV4	PV5	NFB6	NFB7	NFB8	FBSD	FBDD	MC
0-1	348	0	538	6805	4595	2840	7800	929	58	0	3095	2230	1870	360	5535	
1-2	222	0	179	5142	3340	2120	5280	672	34	0	1935	1580	1150	175	3560	
2-3	170	0	179	3405	2120	1510	3885	452	25	0	1765	1330	970	175	2950	
3-4	166	0	179	3405	2120	1510	4070	452	25	0	1765	1330	970	175	2950	
4-5	165	0	179	2981	2120	1510	4070	452	25	0	1765	1330	970	175	2950	
5-6	165	0	179	2981	2120	1510	4245	452	25	0	1765	1330	970	175	2950	
6-7	328	0	538	6218	4175	3095	8600	974	58	0	3635	2660	2230	360	6155	
7-8	519	0	897	10793	6940	4965	14255	1554	132	0	5830	4420	3565	535	9830	
8-9	1181	0	1435	21249	14250	11370	32330	3453	215	0	14400	11010	8930	1440	22910	
9-10	1100	0	1480	20456	13834	10242	29324	3260	227	0	12673	9887	7694	1255	20270	
10-11	987	0	1435	19340	12870	8955	25400	2850	190	0	10540	8055	6405	1080	17780	
11-12	999	0	1505	19764	13295	8770	24885	2892	190	0	10280	7800	6150	1080	17415	
12-13	855	0	1141	17094	11310	7330	20485	2490	151	0	8410	6290	5065	895	14350	
13-14	853	0	1141	17015	11245	7190	19840	2395	142	0	7800	6035	4820	895	13845	
14-15	1023	0	1505	20736	13470	8085	23075	2822	190	0	8805	6755	5355	895	16360	
15-16	1049	0	1679	21368	14150	7980	22595	2872	174	0	8615	6570	5170	895	16240	
16-17	1063	0	1679	21886	14395	7795	22225	2913	174	0	8080	6320	5170	895	15875	
17-18	1211	0	1569	24077	15825	8445	23945	3125	150	0	8900	6785	5345	1070	17230	
18-19	1423	0	1958	28592	19002	9433	26845	3643	189	0	9783	7480	5944	1070	19450	
19-20	1066	0	1569	21072	13850	7000	20240	2740	150	0	7640	5710	4630	895	14715	
20-21	764	0	1141	16586	11060	5500	15765	2027	116	0	5420	4095	3305	535	10880	
21-22	595	0	787	12900	8650	4420	12460	1600	92	0	4345	3375	2585	535	8545	
22-23	588	0	787	12717	8470	4420	12605	1600	92	0	4420	3375	2840	535	8730	
23-0	425	0	787	8962	6175	3270	9080	1124	82	0	3160	2480	1870	360	6145	
<b>Total</b>	17264	0	24469	345543	229381	139264	393304	47742	2904	0	154826	118232	93973	16460	277620	0

VKT (Veh-km) Diesel		Type 3 Trunk Road (50km/h)														
EMFAC Index	1	3	4	5	6	7	8	11	12	13	14	15	16	17	18	19
Hour	PC	taxi	LGV3	LGV4	LGV6	HGV7	HGV8	PLB	PV4	PV5	NFB6	NFB7	NFB8	FBSD	FBDD	MC
0-1	2127	0	1908	56425	36833	15788	47403	8842	827	2942	15793	12703	9733	4923	91298	
1-2	1514	0	1395	41023	27105	12725	36838	7239	613	1680	11998	9503	5748	3998	72105	
2-3	1305	0	1395	37278	25150	12113	34615	7007	612	1584	11773	9155	5555	3998	70143	
3-4	1096	0	1231	31445	20690	10560	31020	6081	496	1578	10458	8228	4843	2908	57610	
4-5	957	0	384	24319	16050	8233	25585	5049	426	1159	9103	7015	3828	2628	54675	
5-6	904	0	384	23078	14810	8395	24578	4645	395	1135	9278	7365	3948	2038	42625	
6-7	1320	0	996	32898	22240	13020	36835	6242	598	2531	14520	11608	7213	2623	49770	
7-8	2546	0	1978	60669	39705	25455	73538	11589	1353	4925	29960	24578	15445	4075	84020	
8-9	4409	0	2830	96380	64730	43900	127158	17890	2245	8678	57415	47640	28910	6745	137060	
9-10	4511	0	4318	102788	69662	44561	125302	18379	2291	8769	56817	47233	29308	7025	135603	
10-11	4188	0	2984	99213	66548	39053	112798	17922	2071	7514	49478	40598	26160	6660	131398	
11-12	4209	0	4419	100160	67518	35393	107638	17489	2018	6313	45335	36473	24203	6295	127103	
12-13	4042	0	4499	97962	65608	32988	97575	16786	1861	6009	41335	33453	22838	5758	121760	
13-14	4148	0	4594	101130	67455	32843	95255	16772	1964	5810	39038	31653	21678	6460	131160	
14-15	4338	0	4629	107575	70780	32118	95363	16676	1980	5381	37083	29588	20900	6443	132425	
15-16	4696	0	5022	113428	74518	33058	95478	17156	2008	5877	36938	29093	20953	6530	132088	
16-17	4852	0	5366	116176	75708	30213	91128	16543	1859	5035	33680	26798	19618	6068	128898	
17-18	5084	0	6088	118594	76858	28608	87608	15657	1997	4776	31420	24313	18775	5825	125858	
18-19	5954	0	7070	128136	84551	29359	88424	15861	2147	5725	33186	26168	20565	5580	125705	
19-20	5573	0	6138	122525	81308	28315	87183	15496	1968	5390	32410	25490	19695	5545	122568	
20-21	4391	0	4036	98122	64433	23698	72005	13050	1352	3963	28070	21685	15015	4398	102858	
21-22	4017	0	3592	91174	59825	22420	70488	12616	1498	3613	26755	20678	14378	5025	108233	
22-23	3478	0	4006	83490	55433	22143	66398	11839	1389	3475	24163	19053	13403	4893	103308	
23-0	3330	0	3607	79505	54570	19498	62920	10569	1312	3691	23255	19090	12488	4793	99735	
<b>Total</b>	82988	0	82870	1963492	1302083	604450	1793126	307395	35283	107553	709256	569153	385192	121228	2488000	0

VKT (Veh-km) Diesel		Type 4 Local Road (50km/h)														
EMFAC Index	1	3	4	5	6	7	8	11	12	13	14	15	16	17	18	19
Hour	PC	taxi	LGV3	LGV4	LGV6	HGV7	HGV8	PLB	PV4	PV5	NFB6	NFB7	NFB8	FBSD	FBDD	MC
0-1	219	0	95	6233	4405	948	3898	989	39	0	1002	732	2255	0	1340	
1-2	179	0	0	5715	3830	1093	3705	1089	45	0	895	560	1228	0	650	
2-3	130	0	0	4279	3053	1028	3318	892	45	0	600	395	733	0	650	
3-4	127	0	0	4249	2908	1048	3285	882	45	0	665	395	833	0	650	
4-5	88	0	0	2519	1645	575	1878	529	22	0	435	230	668	0	650	
5-6	102	0	0	3143	2003	575	1893	473	22	0	435	230	838	0	650	
6-7	113	0	0	3489	2498	575	2085	543	22	0	595	230	1340	0	650	
7-8	171	0	95	5374	3788	1013	3993	772	39	5	1002	732	2255	0	1760	
8-9	281	0	349	8777	6468	1978	6490	1325	77	75	2049	1497	3324	0	3520	
9-10	367	0	685	11927	8861	2553	8437	1675	101	189	2787	2104	4824	0	3615	
10-11	355	0	349	11422	8205	2508	8378	1900	92	75	2629	1827	3554	0	3710	
11-12	352	0	349	10906	8050	2125	7993	1807	77	75	2524	1727	3489	0	3790	
12-13	333	0	189	10331	7378	2060	7198	1754	77	75	2199	1482	3164	0	3885	
13-14	321	0	189	9754	6908	2060	6673	1689	77	75	2034	1304	3164	0	3980	
14-15	332	0	189	9517	6710	1543	6558	1690	55	75	1804	1252	3099	0	4075	
15-16	354	0	189	9532	6655	1368	5850	1611	40	75	1694	1247	3437	0	4170	
16-17	354	0	189	8888	6100	1208	5420	1448	40	75	2084	1147	3542	0	4250	
17-18	400	0	189	9245	6340	635	4500	1508	3	75	2149	1707	4044	0	4345	
18-19	574	0	564	9342	6658	762	3903	1206	58	436	2674	2189	8090	0	4440	
19-20	530	0	349	9211	6363	680	4098	1100	25	436	2576	2154	7644	0	4345	
20-21	440	0	349	8278	5860	580	4048	1049	25	362	2047	1817	5999	0	3560	
21-22	371	0	349	7185	5558	995	3768	998	47	158	2092	1477	4824	0	3560	
22-23	348	0	254	7925	5955	1208	4693	1105	39	124	1912	1565	4435	0	2775	
23-0	467	0	366	10116	7465	1400	5825	1105	61	436	2517	2147	7195	0	2085	
<b>Total</b>	<b>7309</b>	<b>0</b>	<b>5288</b>	<b>187356</b>	<b>133659</b>	<b>30512</b>	<b>117880</b>	<b>29139</b>	<b>1172</b>	<b>2820</b>	<b>41394</b>	<b>30142</b>	<b>83972</b>	<b>0</b>	<b>67105</b>	<b>0</b>

VKT (Veh-km) Diesel		Type 5 Trunk Road (70km/h)														
EMFAC Index	1	3	4	5	6	7	8	11	12	13	14	15	16	17	18	19
Hour	PC	taxi	LGV3	LGV4	LGV6	HGV7	HGV8	PLB	PV4	PV5	NFB6	NFB7	NFB8	FBSD	FBDD	MC
0-1	44	0	100	1851	1060	530	1350	170	27	43	335	195	195	0	815	
1-2	44	0	100	1851	1150	530	1440	170	27	43	335	195	195	0	815	
2-3	22	0	0	947	530	285	725	80	0	0	100	100	100	0	385	
3-4	22	0	0	947	530	285	725	80	0	0	100	100	100	0	385	
4-5	22	0	0	903	530	285	725	80	0	0	100	100	100	0	385	
5-6	22	0	0	903	530	285	675	80	0	0	190	100	100	0	385	
6-7	45	0	189	1801	1200	530	1300	182	39	43	430	285	285	0	960	
7-8	91	0	189	3647	2445	1100	2790	341	39	43	720	485	485	0	1870	
8-9	137	0	379	5488	3735	1630	4225	523	78	87	1240	770	770	0	2970	
9-10	135	0	395	5412	3763	1653	4207	523	78	93	1268	795	780	0	2920	
10-11	135	0	379	5586	3695	1630	4135	502	78	87	1100	770	770	0	2685	
11-12	134	0	384	5453	3740	1540	4230	502	65	87	955	580	580	0	2635	
12-13	110	0	384	4599	3025	1345	3560	410	65	87	815	580	580	0	2110	
13-14	111	0	384	4604	3030	1255	3325	410	65	87	765	480	480	0	2015	
14-15	132	0	384	5601	3610	1490	4000	446	65	87	815	580	580	0	2260	
15-16	131	0	384	5562	3705	1400	4050	446	65	87	675	480	480	0	2160	
16-17	130	0	294	5606	3565	1400	4055	446	53	87	580	390	390	0	2070	
17-18	130	0	389	5660	3470	1355	4055	446	53	87	585	390	390	0	1925	
18-19	151	0	401	6592	4055	1558	4666	504	55	101	551	446	412	0	2120	
19-20	108	0	194	4713	2940	1110	3380	356	27	43	345	295	295	0	1495	
20-21	108	0	194	4658	2940	1110	3380	356	27	43	345	295	295	0	1590	
21-22	87	0	194	3711	2360	875	2655	320	27	43	385	195	195	0	1345	
22-23	87	0	194	3750	2265	965	2655	320	27	43	435	295	295	0	1445	
23-0	66	0	194	2803	1830	725	1980	240	27	43	335	195	195	0	1150	
<b>Total</b>	<b>2205</b>	<b>0</b>	<b>5703</b>	<b>92649</b>	<b>59703</b>	<b>24871</b>	<b>68289</b>	<b>7931</b>	<b>985</b>	<b>1367</b>	<b>13503</b>	<b>9096</b>	<b>9048</b>	<b>0</b>	<b>38895</b>	<b>0</b>

VKT (Veh-km) LPG		Type 1 Expressway (100km/h)														
EMFAC Index	1	3	4	5	6	7	8	11	12	13	14	15	16	17	18	19
Hour	PC	taxi	LGV3	LGV4	LGV6	HGV7	HGV8	PLB	PV4	PV5	NFB6	NFB7	NFB8	FBSD	FBDD	MC
0-1		20790						2706	0	0						
1-2		13260						1665	0	0						
2-3		10775						1353	0	0						
3-4		11105						1353	0	0						
4-5		11205						1353	0	0						
5-6		11765						1353	0	0						
6-7		23755						2706	0	0						
7-8		36180						4135	0	257						
8-9		92520						10351	0	515						
9-10		83863						9798	0	522						
10-11		69925						8194	0	257						
11-12		67845						8369	0	257						
12-13		57225						7328	0	257						
13-14		53115						7111	0	257						
14-15		59425						8152	0	257						
15-16		59830						8388	0	0						
16-17		57750						8388	0	0						
17-18		63285						9604	0	0						
18-19		70810						11052	0	17						
19-20		56130						8563	0	0						
20-21		38535						5682	0	0						
21-22		31785						4466	0	0						
22-23		32650						4546	0	0						
23-0		23425						3018	0	0						
<b>Total</b>	<b>0</b>	<b>1056954</b>	<b>0</b>	<b>0</b>	<b>0</b>	<b>0</b>	<b>0</b>	<b>139633</b>	<b>0</b>	<b>2597</b>	<b>0</b>	<b>0</b>	<b>0</b>	<b>0</b>	<b>0</b>	<b>0</b>

VKT (Veh-km) LPG		Type 2 Trunk Road (80km/h)														
EMFAC Index	1	3	4	5	6	7	8	11	12	13	14	15	16	17	18	19
Hour	PC	taxi	LGV3	LGV4	LGV6	HGV7	HGV8	PLB	PV4	PV5	NFB6	NFB7	NFB8	FBSD	FBDD	MC
0-1		25560						2976	0	141						
1-2		18620						2153	0	141						
2-3		13175						1448	0	40						
3-4		13360						1448	0	40						
4-5		13620						1448	0	40						
5-6		13725						1448	0	40						
6-7		27670						3121	0	141						
7-8		47420						4981	0	385						
8-9		101165						11067	0	769						
9-10		93193						10450	0	791						
10-11		81920						9135	0	566						
11-12		79965						9268	0	526						
12-13		66660						7980	0	526						
13-14		63940						7675	0	486						
14-15		73395						9043	0	486						
15-16		73020						9203	0	283						
16-17		71175						9337	0	283						
17-18		76005						10015	0	283						
18-19		87292						11677	0	335						
19-20		67295						8780	0	181						
20-21		53135						6498	0	141						
21-22		42790						5130	0	141						
22-23		43155						5130	0	181						
23-0		33080						3601	0	141						
<b>Total</b>	<b>0</b>	<b>1280335</b>	<b>0</b>	<b>0</b>	<b>0</b>	<b>0</b>	<b>0</b>	<b>153013</b>	<b>0</b>	<b>7087</b>	<b>0</b>	<b>0</b>	<b>0</b>	<b>0</b>	<b>0</b>	<b>0</b>

VKT (Veh-km) LPG

Type 3 Trunk Road (50km/h)

EMFAC Index	1	3	4	5	6	7	8	11	12	13	14	15	16	17	18	19
Hour	PC	taxi	LGV3	LGV4	LGV6	HGV7	HGV8	PLB	PV4	PV5	NFB6	NFB7	NFB8	FBSD	FBDD	MC
0-1		348003						28338	0	3830						
1-2		254128						23201	0	2187						
2-3		235655						22458	0	2063						
3-4		193035						19489	0	2054						
4-5		173120						16181	0	1509						
5-6		160408						14887	0	1478						
6-7		218213						20006	0	3296						
7-8		448005						37143	0	6412						
8-9		767385						57340	0	11300						
9-10		770041						58906	0	11418						
10-11		718235						57441	0	9784						
11-12		710120						56053	0	8221						
12-13		671018						53799	0	7825						
13-14		672858						53755	0	7564						
14-15		686778						53447	0	7006						
15-16		725603						54984	0	7652						
16-17		726168						53020	0	6556						
17-18		734835						50181	0	6218						
18-19		821061						50834	0	7454						
19-20		788000						49666	0	7019						
20-21		632800						41825	0	5161						
21-22		607498						40436	0	4704						
22-23		539668						37946	0	4525						
23-0		507693						33874	0	4806						
<b>Total</b>	0	13110322	0	0	0	0	0	985210	0	140043	0	0	0	0	0	0

VKT (Veh-km) LPG

Type 4 Local Road (50km/h)

EMFAC Index	1	3	4	5	6	7	8	11	12	13	14	15	16	17	18	19
Hour	PC	taxi	LGV3	LGV4	LGV6	HGV7	HGV8	PLB	PV4	PV5	NFB6	NFB7	NFB8	FBSD	FBDD	MC
0-1		34720						3171	0	0						
1-2		29823						3489	0	0						
2-3		21560						2858	0	0						
3-4		21490						2828	0	0						
4-5		14593						1694	0	0						
5-6		16398						1515	0	0						
6-7		17915						1740	0	0						
7-8		27858						2473	0	7						
8-9		47258						4245	0	97						
9-10		60846						5368	0	246						
10-11		60370						6090	0	97						
11-12		59903						5791	0	97						
12-13		55865						5623	0	97						
13-14		53980						5413	0	97						
14-15		54600						5417	0	97						
15-16		56268						5162	0	97						
16-17		54905						4642	0	97						
17-18		61528						4834	0	97						
18-19		79339						3864	0	568						
19-20		73968						3527	0	568						
20-21		61835						3363	0	472						
21-22		53618						3199	0	206						
22-23		51153						3542	0	161						
23-0		66388						3542	0	568						
<b>Total</b>	0	1136176	0	0	0	0	0	93391	0	3671	0	0	0	0	0	0

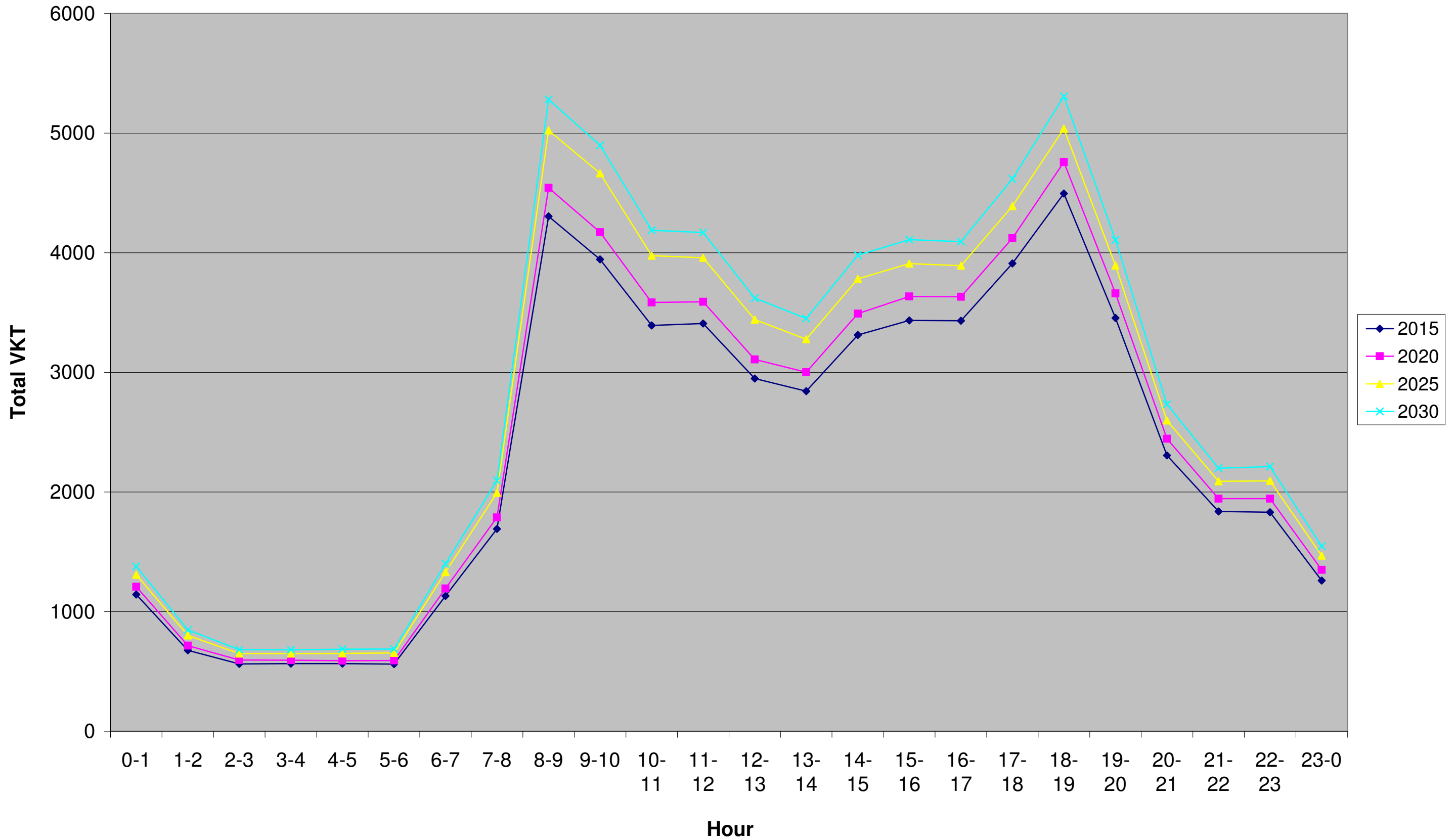
VKT (Veh-km) LPG

Type 5 Trunk Road (70km/h)

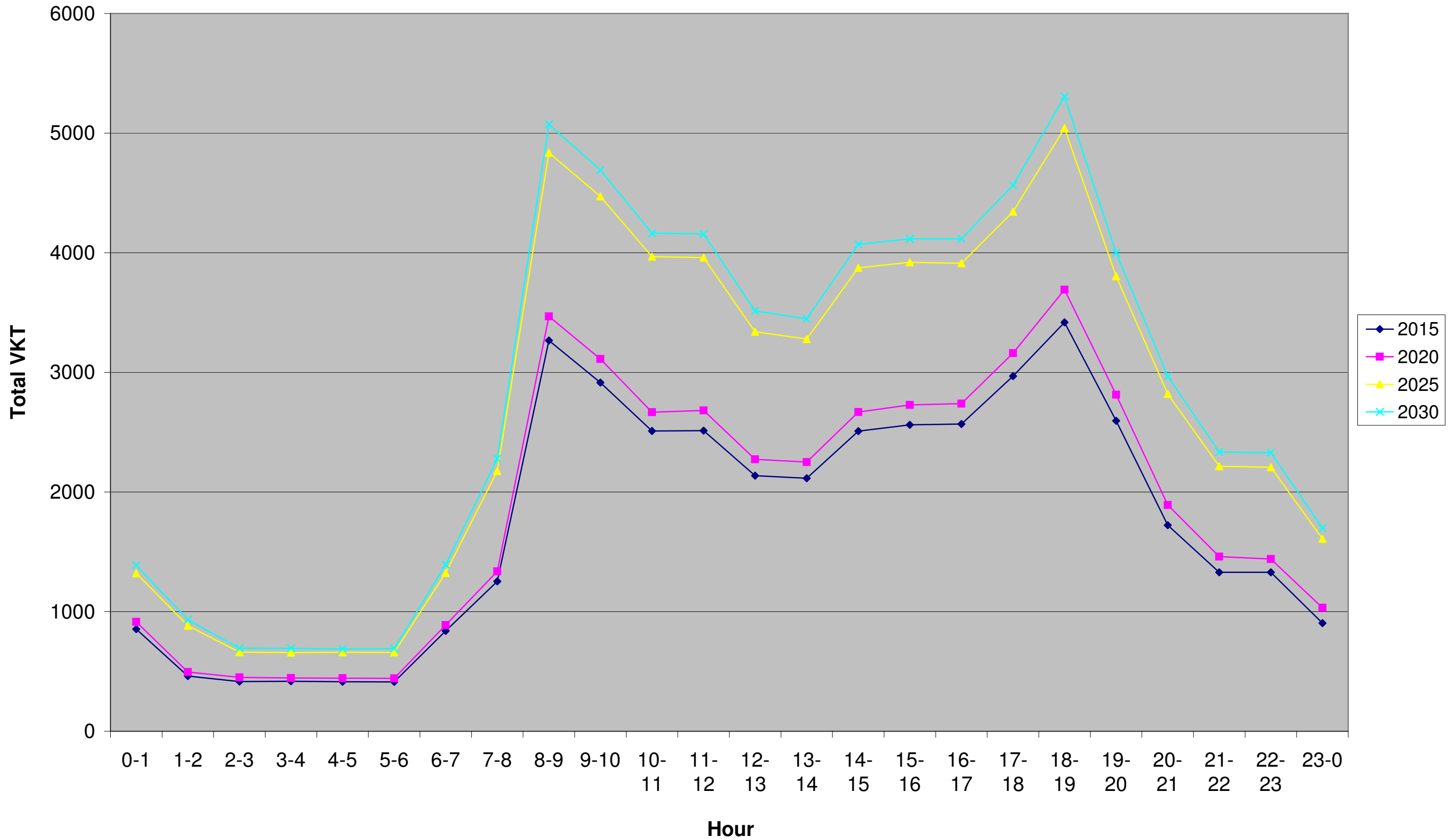
EMFAC Index	1	3	4	5	6	7	8	11	12	13	14	15	16	17	18	19
Hour	PC	taxi	LGV3	LGV4	LGV6	HGV7	HGV8	PLB	PV4	PV5	NFB6	NFB7	NFB8	FBSD	FBDD	MC
0-1		5865						545	0	57						
1-2		5865						545	0	57						
2-3		2980						255	0	0						
3-4		2980						255	0	0						
4-5		3165						255	0	0						
5-6		3120						255	0	0						
6-7		6235						583	0	57						
7-8		12755						1094	0	57						
8-9		19275						1677	0	113						
9-10		18852						1677	0	121						
10-11		18475						1608	0	113						
11-12		18200						1608	0	113						
12-13		14845						1315	0	113						
13-14		14515						1315	0	113						
14-15		17120						1429	0	113						
15-16		16795						1429	0	113						
16-17		16280						1429	0	113						
17-18		15955						1429	0	113						
18-19		18262						1616	0	131						
19-20		13205						1139	0	57						
20-21		13445						1139	0	57						
21-22		10930						1025	0	57						
22-23		11120						1025	0	57						
23-0		8420						770	0	57						
<b>Total</b>	0	288659	0	0	0	0	0	25419	0	1779	0	0	0	0	0	0



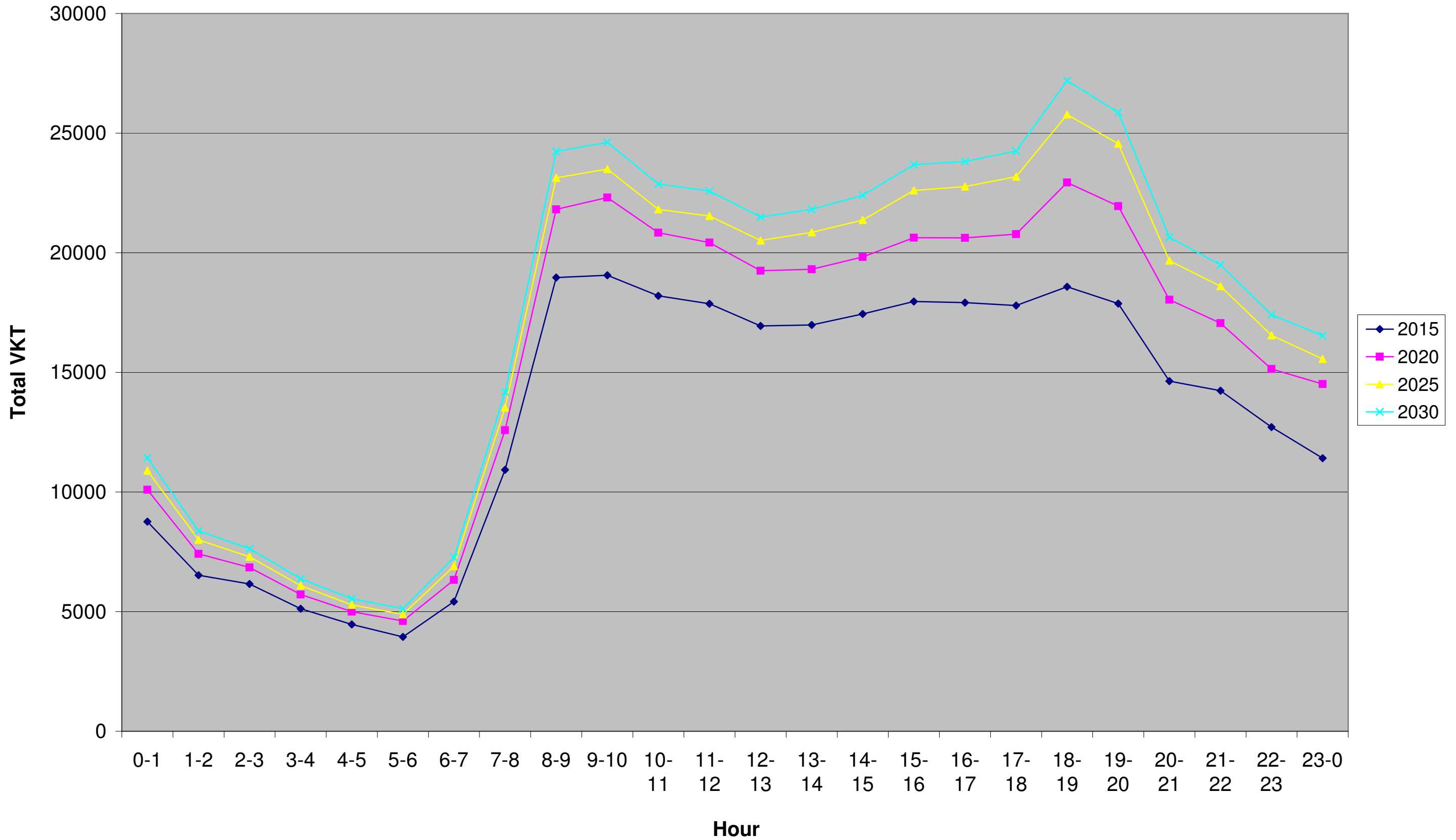
Total VKT for all vehicles (Type 1 Expressway - 100 km/h)



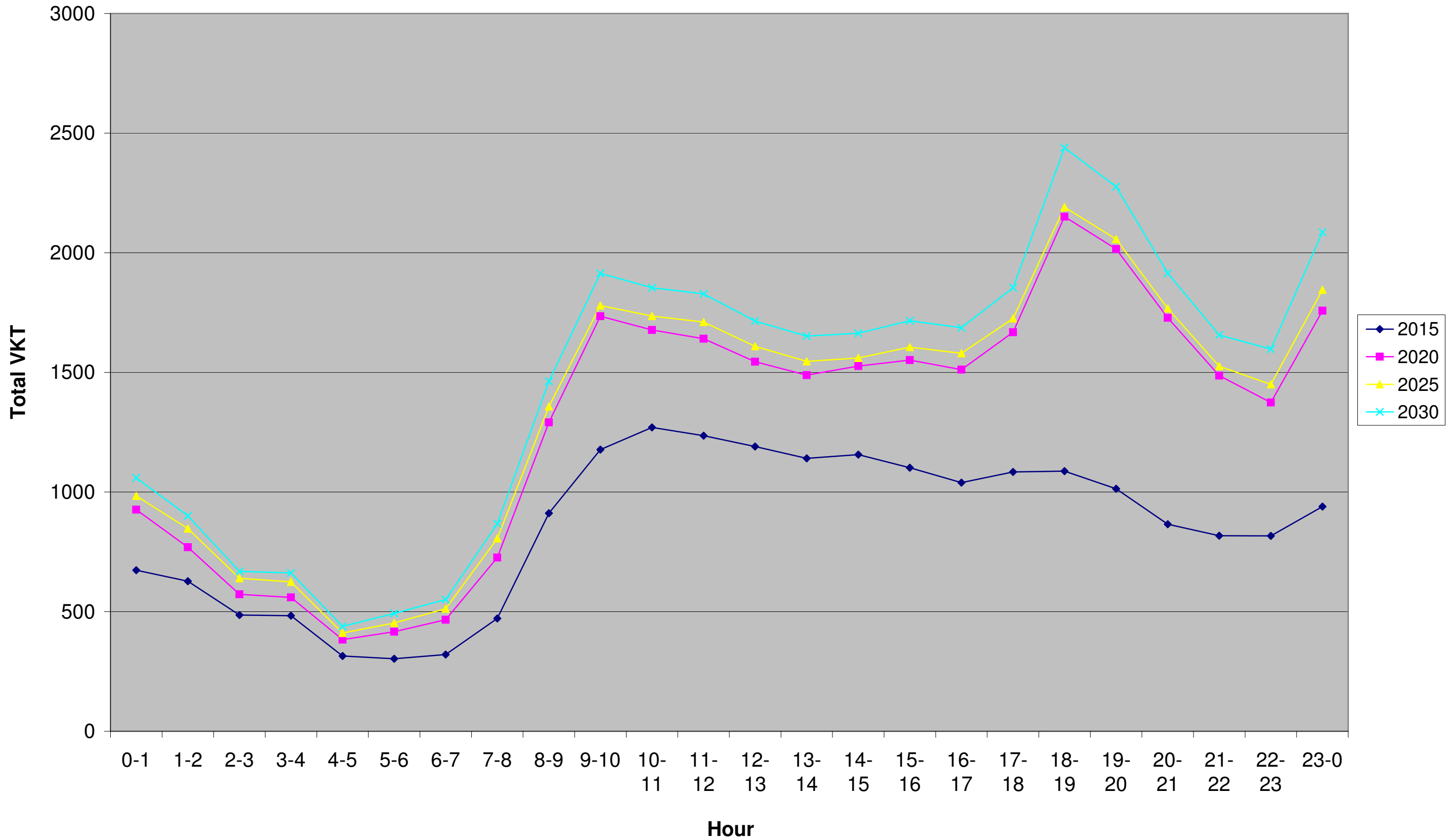
Total VKT for all vehicles (Type 2 Trunk Road - 80km/h)



Total VKT for all vehicles (Type 3 Trunk Road - 50km/h)



Total VKT for all vehicles (Type 4 Local Road - 50km/h)



**Total VKT for all vehicles (Type 5 Trunk Road - 70km/h)**

