

	Gammon Construction Limited Geotechnical Contracting Department	DRILLHOLE No. BH4
		SHEET 3 of 6
DRILLHOLE RECORD		
Project Title MTRC Kowloon Station Package 5, 6 and 7 Ground Investigation for Water Cooling System		
METHOD Rotary	CO-ORDINATES E 834568.75 N 818060.27	CONTRACT No.
MACHINE & No. 20-062		DATE from 10/03/2001 to 14/03/2001
FLUSHING MEDIUM Water	ORIENTATION Vertical	GROUND LEVEL + 5.03 mPD

Drilling Progress	Casing depth/size	Water Depth (m)	Water Recovery %	Total core Recovery %	Solid core Recovery %	R.Q.D.	Fracture Index	Tests	Samples		Reduced Level	Depth (m)	Legend	Grade	Description
									No.	Type					
								23 23.5 N=15	19	U	-14.97	20.00			As sheet 1 of 6
								23 23.5 N=17	20	U		20.45			
		2.47m @ 16.00						23 23.5 N=17	21	U		22.00			
		3.75m @ 08:00						23 23.5 N=17	22	U		22.45			
								23 23.5 N=17	23	U		24.00			
								23 23.5 N=17	24	U		24.45			
								34 27.5, 10 N=3	25	U		26.00			
								34 27.5, 10 N=3	26	U		26.45			
								87 10, 12, 14 N=3	27	U	-22.97	28.00			Dense, yellowish brown, slightly silty, medium to coarse SAND. (ALLUVIUM)
								87 10, 12, 14 N=3	28	U	-23.47	28.50			Very stiff, greyish white and pink, sandy SILT. (ALLUVIUM)
									29	U		29.50			
									30	U		29.90			
											-24.07	30.00			

- Small disturbed sample
- Large disturbed sample
- SPT liner sample
- ▨ U76 undisturbed sample
- ▩ U100 undisturbed sample
- Master sample
- ⊖ Piston sample
- ▲ Water sample
- Piezometer / standpipe tip
- ⊥ Standard penetration test
- ⊥ Pressuremeter test
- ⊥ Permeability test
- ⊥ Impression packer test
- ∨ In-situ vane shear test

LOGGED MYL
DATE 15/03/2001
CHECKED KS LUK
DATE 16/03/2001

REMARKS


	Gammon Construction Limited Geotechnical Contracting Department	DRILLHOLE No. BH4
		SHEET 4 of 6
DRILLHOLE RECORD		
Project Title MTRC Kowloon Station Package 5, 6 and 7 Ground Investigation for Water Cooling System		
METHOD Rotary	CO-ORDINATES E 834568.75 N 818060.27	CONTRACT No.
MACHINE & No. 20-062		DATE from 10/03/2001 to 14/03/2001
FLUSHING MEDIUM Water	ORIENTATION Vertical	GROUND LEVEL + 5.03 mPD

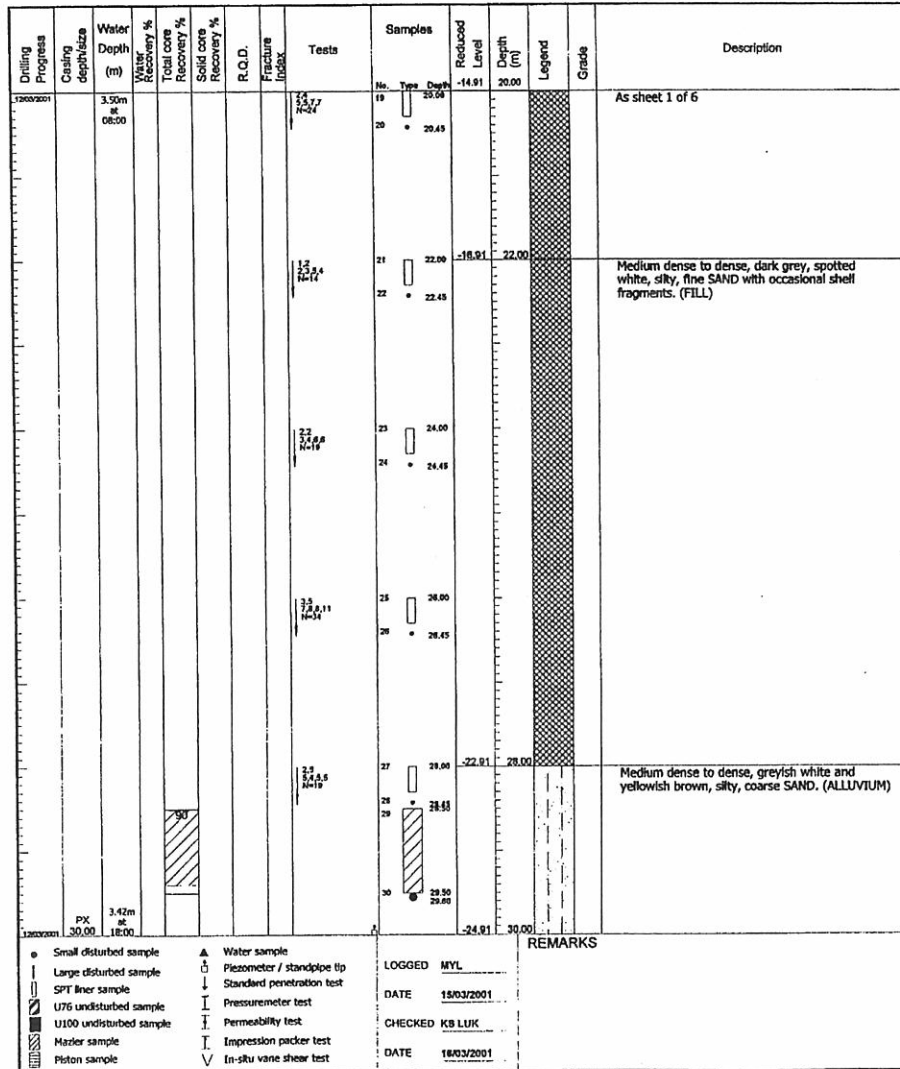
Drilling Progress	Casing depth/size	Water Depth (m)	Water Recovery %	Total core Recovery %	Solid core Recovery %	R.Q.D.	Fracture Index	Tests	Samples		Reduced Level	Depth (m)	Legend	Grade	Description
									No.	Type					
								23 23.5 N=15	31	U	-24.97	30.00			As sheet 3 of 6
		3.62m @ 18:00						23 23.5 N=15	32	U		30.45			
		3.45m @ 06:30						23 23.5 N=15	33	U		31.00			
								23 23.5 N=15	34	U		31.90			
								23 23.5 N=15	35	U	-26.97	32.00			32.00 - 34.50m: Slightly sandy
								23 23.5 N=15	36	U		32.45			
								23 23.5 N=15	37	U		33.00			
								23 23.5 N=15	38	U		33.50			
								23 23.5 N=15	39	U		34.00			
								23 23.5 N=15	40	U	-20.47	34.50			
								23 23.5 N=15	41	U		35.00			
								23 23.5 N=15	42	U		35.90			
		PX 36.00 HX						34 27.5, 10 N=3	43	U	-30.97	36.00			Medium dense, yellowish brown, spotted white, slightly silty, medium to coarse SAND. (ALLUVIUM)
								34 27.5, 10 N=3	44	U		36.45			
								87 10, 12, 14 N=3	45	U	-32.97	38.00			Extremely weak, light pinkish brown, mottled white, completely decomposed, medium grained GRANITE. (Very stiff, sandy SILT with occasional angular to subangular, fine gravel of quartz and rock fragments)
								87 10, 12, 14 N=3	46	U		38.45			
											-34.97	40.00			


- Small disturbed sample
- Large disturbed sample
- SPT liner sample
- ▨ U76 undisturbed sample
- ▩ U100 undisturbed sample
- Master sample
- ⊖ Piston sample
- ▲ Water sample
- Piezometer / standpipe tip
- ⊥ Standard penetration test
- ⊥ Pressuremeter test
- ⊥ Permeability test
- ⊥ Impression packer test
- ∨ In-situ vane shear test

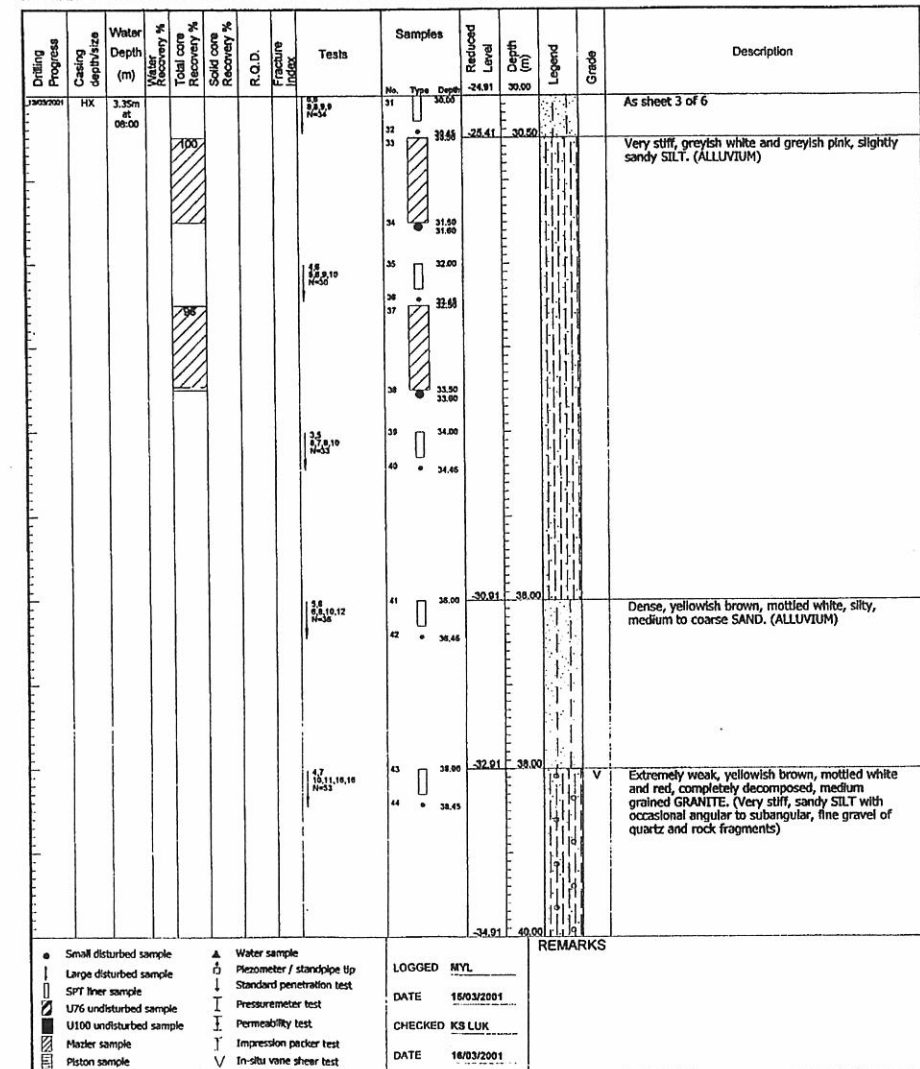
LOGGED MYL
DATE 15/03/2001
CHECKED KB LUK
DATE 16/03/2001

REMARKS

	Gammon Construction Limited <i>Geotechnical Contracting Department</i>	DRILLHOLE No. BH5
		SHEET 3 of 6
DRILLHOLE RECORD		
Project Title MTRC Kowloon Station Package 5, 6 and 7 Ground Investigation for Water Cooling System		
METHOD Rotary	CO-ORDINATES E 834575.52 N 818061.00	CONTRACT No.
MACHINE & No. 20-061	DATE from 10/03/2001 to 14/03/2001	
FLUSHING MEDIUM Water	ORIENTATION Vertical	GROUND LEVEL + 5.09 mPD



	Gammon Construction Limited <i>Geotechnical Contracting Department</i>	DRILLHOLE No. BH5
		SHEET 4 of 6
DRILLHOLE RECORD		
Project Title MTRC Kowloon Station Package 5, 6 and 7 Ground Investigation for Water Cooling System		
METHOD Rotary	CO-ORDINATES E 834575.52 N 818061.00	CONTRACT No.
MACHINE & No. 20-061	DATE from 10/03/2001 to 14/03/2001	
FLUSHING MEDIUM Water	ORIENTATION Vertical	GROUND LEVEL + 5.09 mPD



	Gammon Construction Limited Geotechnical Contracting Department		DRILLHOLE No. BH5
			SHEET 5 of 6
DRILLHOLE RECORD			
Project Title MTRC Kowloon Station Package 5, 6 and 7 Ground Investigation for Water Cooling System			
METHOD Rotary	CO-ORDINATES E 834575.52 N 818061.00		CONTRACT No.
MACHINE & No. 20-061			DATE from 10/03/2001 to 14/03/2001
FLUSHING MEDIUM Water	ORIENTATION Vertical	GROUND LEVEL + 5.09 mPD	

Drilling Progress	Casing depth/size	Water Depth (m)	Mazzer Recovery %	Total core Recovery %	Solid core Recovery %	R.O.D.	Fracture Index	Tests	Samples			Legend	Grade	Description
									No.	Type	Depth			
									45	U76	40.00			As sheet 4 of 6
									46	*	48.45			
									47	U76	42.00			42.00 - 46.00m: Pinkish red.
									48	*	42.45			
									49	U76	44.00			
									50	*	44.45			
									51	U76	48.00			46.00 - 48.00m: Sandy with some angular, fine to coarse gravel sized quartz and rock fragments.
									52	*	48.45			
									53	U76	48.00			
									54	*	48.45			

- Small disturbed sample
- Large disturbed sample
- SPT liner sample
- U76 undisturbed sample
- U100 undisturbed sample
- Mazzer sample
- Piston sample
- Water sample
- Piezometer / standpipe tip
- Standard penetration test
- Pressuremeter test
- Permeability test
- Impression packer test
- In-situ vane shear test

LOGGED MYL
DATE 15/03/2001
CHECKED KS LUK
DATE 16/03/2001

REMARKS

	Gammon Construction Limited Geotechnical Contracting Department		DRILLHOLE No. BH5
			SHEET 6 of 6
DRILLHOLE RECORD			
Project Title MTRC Kowloon Station Package 5, 6 and 7 Ground Investigation for Water Cooling System			
METHOD Rotary	CO-ORDINATES E 834575.52 N 818061.00		CONTRACT No.
MACHINE & No. 20-061			DATE from 10/03/2001 to 14/03/2001
FLUSHING MEDIUM Water	ORIENTATION Vertical	GROUND LEVEL + 5.09 mPD	

Drilling Progress	Casing depth/size	Water Depth (m)	Mazzer Recovery %	Total core Recovery %	Solid core Recovery %	R.O.D.	Fracture Index	Tests	Samples			Legend	Grade	Description
									No.	Type	Depth			
									55	U76	50.00			As sheet 5 of 6
									56	*	50.00			
									57	*	50.36			End of the hole at 50.36m.

- Small disturbed sample
- Large disturbed sample
- SPT liner sample
- U76 undisturbed sample
- U100 undisturbed sample
- Mazzer sample
- Piston sample
- Water sample
- Piezometer / standpipe tip
- Standard penetration test
- Pressuremeter test
- Permeability test
- Impression packer test
- In-situ vane shear test

LOGGED MYL
DATE 15/03/2001
CHECKED KS LUK
DATE 16/03/2001

REMARKS

VIBRO										DRILLHOLE RECORD		HOLE NO. 62	
CONTRACT GE/93/08										SHEET 1 of 3			
PROJECT West Kowloon Reclamation Southern Area Roads.													
METHOD Vibrocoring				CO-ORDINATES				W.O. No GE/93/06.86					
MACHINE & No. HD30(S)				E 834600.00				DATE from 09/06/94 to 09/06/94					
FLUSHING MEDIUM Water				ORIENTATION Vertical				GROUND LEVEL 4.62 mPD					
Drilling Progress	Casing size	Water level (m) Shift start/end	Total core Recovery %	Solid core Recovery %	R.Q.D.	Fracture Index	Tests	Samples	Reduced Level	Depth (m)	Legend	Grade	Description
09/08/94			80					0.00					Dark brown, silty fine to medium SAND with some angular fine gravel and occasional shell fragments. (FILL)
1													Grey, silty coarse SAND with much shell fragments from 0.60 to 1.00m.
2								2.22	2.40				Grey, silty fine SAND from 1.60 to 1.65m and 1.70 to 2.10m.
3								3.00	1.62	3.00			Brownish red, silty medium Sand from 3.90 to 4.05m.
4			97					0.52		-4.10			No recovery from 2.40 to 3.00m, assumed to be Sand.
5								8.00					Yellowish brown, dark brown in places, silty fine to medium SAND with occasional shell fragments. (FILL)
6													Pockets (20mm) of soft, dark grey and brown, Clay at 4.60m, 4.97m, 8.15m, 8.20m, 8.70m and 9.90m.
7			97										Silty medium to coarse Sand from 5.30 to 6.40m, 8.15 to 8.22m and 8.60 to 8.72m.
8													
9													Brownish grey, slightly clayey in places, silty fine SAND. (FILL)
10			97										Discrete layers of clayey silty fine Sand from 10.70 to 11.10m and 11.30 to 11.60m.

- SMALL DISTURBED SAMPLE
- LARGE DISTURBED SAMPLE
- SPT LINER SAMPLE
- ▨ U78 UNDISTURBED SAMPLE
- ▩ U100 UNDISTURBED SAMPLE
- ▧ MAZIER SAMPLE
- ▦ PISTON SAMPLE
- △ WATER SAMPLE
- ◊ PIEZOMETER TIP
- ⊙ STANDPIPE
- ⊕ STANDARD PENETRATION TEST
- ⊖ PERMEABILITY TEST
- ∇ IN-SITU VANE SHEAR TEST

LOGGED WCH
 DATE 27/09/94
 CHECKED MC MC
 DATE 03/10/94

REMARKS

VIBRO										DRILLHOLE RECORD		HOLE NO. 62	
CONTRACT GE/93/06										SHEET 2 of 3			
PROJECT West Kowloon Reclamation Southern Area Roads.													
METHOD Vibrocoring				CO-ORDINATES				W.O. No GE/93/06.86					
MACHINE & No. HD30(S)				E 834600.00				DATE from 09/06/94 to 09/06/94					
FLUSHING MEDIUM Water				ORIENTATION Vertical				GROUND LEVEL 4.62 mPD					
Drilling Progress	Casing size	Water level (m) Shift start/end	Total core Recovery %	Solid core Recovery %	R.Q.D.	Fracture Index	Tests	Samples	Reduced Level	Depth (m)	Legend	Grade	Description
09/06/94			87										Pockets (20mm) of soft, dark grey Clay at 10.15m and 11.57m.
11													Decayed organic matter noted at 10.65m, 11.25m and 11.48m.
12								12.00					Greyish brown, silty fine to medium SAND with occasional shell fragments and angular fine gravel. (FILL)
13			97										Pocket (30mm) of soft, dark grey Clay at 14.45m.
14													
15								16.00					Greyish brown and yellowish brown, clayey silty fine to medium SAND with occasional angular fine gravel and shell fragments. (FILL)
16													Pockets (20-60mm) of soft, dark grey, light grey and reddish brown, Clay from 15.52 to 15.61m, 16.32m, 16.42 to 16.53m, 16.80 to 16.90m, 17.00m, 17.30 to 17.45m, 17.65 to 17.72m and 18.40m.
17													
18								18.00					
19													
20													Yellowish brown and greyish brown, silty fine to medium SAND with some angular fine gravel. (FILL)

- SMALL DISTURBED SAMPLE
- LARGE DISTURBED SAMPLE
- SPT LINER SAMPLE
- ▨ U78 UNDISTURBED SAMPLE
- ▩ U100 UNDISTURBED SAMPLE
- ▧ MAZIER SAMPLE
- ▦ PISTON SAMPLE
- △ WATER SAMPLE
- ◊ PIEZOMETER TIP
- ⊙ STANDPIPE
- ⊕ STANDARD PENETRATION TEST
- ⊖ PERMEABILITY TEST
- ∇ IN-SITU VANE SHEAR TEST

LOGGED WCH
 DATE 27/09/94
 CHECKED MC WJ
 DATE 03/10/94

REMARKS

VIBRO										DRILLHOLE RECORD		HOLE NO. 62	
CONTRACT GE/93/06										SHEET 3 of 3			
PROJECT West Kowloon Reclamation Southern Area Roads.													
METHOD Vibrocoring			CO-ORDINATES				W.O. No GE/93/06.86						
MACHINE & No. HD30(S)			E 834600.00				DATE from 09/06/94 to 09/06/94						
FLUSHING MEDIUM Water			ORIENTATION Vertical				GROUND LEVEL 4.62 mPD						
Drilling Progress	Casing size	Water level (m) Shift start/end	Total core Recovery %	Solid core Recovery %	R.Q.D.	Fracture Index	Tests	Samples	Reduced Level	Depth (m)	Legend	Grade	Description
09/06/94			97					VIBROCORING	21.00				Pockets (20-50mm) of soft, dark grey and yellowish brown, Clay from 19.60 to 19.67m, 22.42 to 22.50m, 22.55 to 22.65m, 22.66m, 23.00m and 23.10m.
21			97					VIBROCORING					Clayey silty medium Sand from 20.80 to 20.90m, 21.40 to 21.45m, 21.70 to 21.72m, 23.10 to 23.20m, 23.40 to 23.70m and 24.80 to 24.72m.
22								VIBROCORING					Decayed organic matter at 22.50m, 24.70m.
23								VIBROCORING					
24			97					VIBROCORING	24.00				
25								VIBROCORING	-20.38	-25.00			Yellowish brown and dark grey, clayey in places, silty fine to medium SAND with occasional angular fine gravel. (FILL)
26								VIBROCORING					Clayey silty fine Sand from 25.40 to 25.50m, 25.52 to 25.90m, 26.37 to 26.55m and 26.57 to 26.76m.
27								VIBROCORING	-22.13	-26.76			Pockets (20mm) of soft, dark grey Clay from 25.42m, 25.60m, 25.70m, 25.90m, 26.26m, 26.37m and 26.42 to 26.54m.
28								VIBROCORING	-22.38	-27.00			Silty coarse Sand with much shell fragments from 25.90 to 26.00m.
29								VIBROCORING					Grey mottled yellow and reddish brown, clayey silty fine to coarse SAND. (ALLUVIUM) (CHEK LAP KOK FORMATION)
30								VIBROCORING					End of investigation hole at 27.00m

VIBRO										DRILLHOLE RECORD		HOLE NO. 63	
CONTRACT GE/93/06										SHEET 1 of 3			
PROJECT West Kowloon Reclamation Southern Area Roads.													
METHOD Vibrocoring			CO-ORDINATES				W.O. No GE/93/06.86						
MACHINE & No. HD30(S)			E 834606.22				DATE from 10/06/94 to 10/06/94						
FLUSHING MEDIUM Water			ORIENTATION Vertical				GROUND LEVEL 4.37 mPD						
Drilling Progress	Casing size	Water level (m) Shift start/end	Total core Recovery %	Solid core Recovery %	R.Q.D.	Fracture Index	Tests	Samples	Reduced Level	Depth (m)	Legend	Grade	Description
10/06/94			90					VIBROCORING	0.00				Grey silty coarse SAND with many shell fragments and occasional subangular fine gravel. (FILL)
1								VIBROCORING					No recovery from 2.40 to 3.00m, assumed to be Sand.
2								VIBROCORING	1.07	2.40			
3								VIBROCORING	2.00	3.00			
4			83					VIBROCORING	-0.03	4.40			
5								VIBROCORING	-1.13	5.60			Yellowish brown, silty fine to coarse SAND with some angular fine gravel and shell fragments. (FILL)
6								VIBROCORING	8.00	-1.63	6.00		Silty coarse Sand with much shell fragments and some angular fine gravel from 5.30 to 6.50m.
7			90					VIBROCORING					Silty fine Sand from 6.50 to 6.60m.
8								VIBROCORING					Clayey silty medium to coarse Sand from 7.55 to 7.60m, 7.66 to 7.70m and 10.65 to 10.72m.
9								VIBROCORING	-4.03	8.40			Pockets (20mm) of soft, dark grey Clay at 8.10m and 10.46m.
10								VIBROCORING	9.00	-4.63	9.00		No recovery from 5.50 to 6.00m and 8.40 to 9.00m, assumed to be Sand.
10			97					VIBROCORING					

- SMALL DISTURBED SAMPLE
- LARGE DISTURBED SAMPLE
- RPT UNDR. SAMPLE
- ▣ U78 UNDR. SAMPLE
- ▤ U100 UNDR. SAMPLE
- ▥ MAZIER SAMPLE
- ▦ PISTON SAMPLE
- △ WATER SAMPLE
- ▽ PIEZOMETER TIP
- STANDPIPE
- STANDARD PENETRATION TEST
- ▽ PERMEABILITY TEST
- ▽ IN-SITU VANE SHEAR TEST

LOGGED WCH

DATE 27/09/94

CHECKED MC WV

DATE 03/10/94

REMARKS

- SMALL DISTURBED SAMPLE
- LARGE DISTURBED SAMPLE
- RPT UNDR. SAMPLE
- ▣ U78 UNDR. SAMPLE
- ▤ U100 UNDR. SAMPLE
- ▥ MAZIER SAMPLE
- ▦ PISTON SAMPLE
- △ WATER SAMPLE
- ▽ PIEZOMETER TIP
- STANDPIPE
- STANDARD PENETRATION TEST
- ▽ PERMEABILITY TEST
- ▽ IN-SITU VANE SHEAR TEST


LOGGED WCH

DATE 28/09/94

CHECKED MC WV


DATE 03/10/94

REMARKS

										DRILLHOLE RECORD				HOLE NO. 63	
PROJECT West Kowloon Reclamation Southern Area Roads.										CONTRACT GE/93/06				SHEET 2 of 3	
METHOD Vibrocoring			CO-ORDINATES E 834606.22 N 818056.24				W.O. No GE/93/06.86								
MACHINE & No. HD30(S)							DATE from 10/06/94 to 10/06/94								
FLUSHING MEDIUM Water			ORIENTATION Vertical				GROUND LEVEL 4.37 mPD								
Drilling Progress	Casing size	Water level (m) Shift start/end	Total core Recovery %	Solid core Recovery %	R.Q.D.	Fracture Index	Tests	Samples	Reduced Level	Depth (m)	Legend	Grade	Description		
10/06/94			97										See sheet 1 of 3		
11								VIBROCORING	-6.68	-11.05			Yellowish brown and grey, silty fine to medium SAND with occasional angular fine gravel. (FILL)		
12			97					VIBROCORING	-7.63	-12.00			Pockets (30mm) of soft, light brown and dark grey, Clay at 11.10m, 11.15m, 11.20m, 11.25m, 11.40m, 11.48m and 11.56m. Discrete layers of slightly clayey silty fine Sand from 11.60 to 12.00m. Yellowish and greyish brown, silty medium to coarse SAND with much shell fragments and occasional angular fine gravel. (FILL)		
13								VIBROCORING	-9.63	-14.00			Decayed organic matter at 12.90m, 13.87m and 13.90m.		
14								VIBROCORING					Grey, dark brown in places, silty fine to medium SAND with some subangular fine to medium gravel and occasional shell fragments. (FILL)		
15			97					VIBROCORING					Pockets (70mm) of soft, dark grey Clay from 17.45 to 17.65m. Slightly clayey silty fine to medium Sand from 16.60 to 17.00m and 17.70 to 17.90m.		
16								VIBROCORING							
17								VIBROCORING							
18			97					VIBROCORING	-13.73	-18.10			Yellowish to brownish grey, silty fine to coarse SAND with occasional shell fragments and medium to fine gravel. (FILL)		
19								VIBROCORING					Silty fine sand from 19.34 to 19.60m and 20.40 to 20.46m. Pockets (20mm) of soft, dark grey Clay from 20.28 to 20.30m and 20.63m.		
20								VIBROCORING							

* SMALL DISTURBED SAMPLE Δ WATER SAMPLE
 □ LARGE DISTURBED SAMPLE ▽ PIZOMETER TIP
 ▨ SPY LIVER SAMPLE □ STANDPIPE
 ▩ U78 UNDISTURBED SAMPLE ⊕ STANDARD PENETRATION TEST
 ▭ U100 UNDISTURBED SAMPLE ⊕ PERMEABILITY TEST
 ▮ MAZIER SAMPLE ⊕ IN-SITU VANE SHEAR TEST
 ▯ PISTON SAMPLE

LOGGED WCH
 DATE 28/09/94
 CHECKED MC MC
 DATE 03/10/94

										DRILLHOLE RECORD				HOLE NO. 63	
PROJECT West Kowloon Reclamation Southern Area Roads.										CONTRACT GE/93/06				SHEET 3 of 3	
METHOD Vibrocoring			CO-ORDINATES E 834606.22 N 818056.24				W.O. No GE/93/06.86								
MACHINE & No. HD30(S)							DATE from 10/06/94 to 10/06/94								
FLUSHING MEDIUM Water			ORIENTATION Vertical				GROUND LEVEL 4.37 mPD								
Drilling Progress	Casing size	Water level (m) Shift start/end	Total core Recovery %	Solid core Recovery %	R.Q.D.	Fracture Index	Tests	Samples	Reduced Level	Depth (m)	Legend	Grade	Description		
10/06/94			97										See sheet 2 of 3		
21								VIBROCORING		21.00					
22								VIBROCORING	-17.15	-21.52			Yellowish brown, grey and brownish grey, clayey in places, silty fine to medium SAND with some angular fine gravel and occasional shell fragments. (FILL)		
23								VIBROCORING					Silty fine Sand from 21.62 to 21.90m, 22.90 to 24.50m and 25.70 to 26.00m.		
24								VIBROCORING		24.00			Silty coarse Sand with many shell fragments from 25.00 to 25.70m and 26.00m.		
25			97					VIBROCORING					Pockets (10-25mm) of soft, dark grey, Clay at 22.30m, 22.60m, 23.10m, 24.32m, 24.50m, 24.62m and 25.05m.		
26								VIBROCORING							
27								VIBROCORING	-21.88	-26.36			Soft, grey and yellow slightly silty CLAY. (ALLUVIUM) (CHEK LAP KOK FORMATION)		
28								VIBROCORING	-22.33	-26.70			Yellowish brown, light grey in places, clayey silty fine to medium SAND. (ALLUVIUM) (CHEK LAP KOK FORMATION)		
29								VIBROCORING					End of investigation hole at 27.00m		
30								VIBROCORING	27.00	-22.63	-27.00				

* SMALL DISTURBED SAMPLE Δ WATER SAMPLE
 □ LARGE DISTURBED SAMPLE ▽ PIZOMETER TIP
 ▨ SPY LIVER SAMPLE □ STANDPIPE
 ▩ U78 UNDISTURBED SAMPLE ⊕ STANDARD PENETRATION TEST
 ▭ U100 UNDISTURBED SAMPLE ⊕ PERMEABILITY TEST
 ▮ MAZIER SAMPLE ⊕ IN-SITU VANE SHEAR TEST
 ▯ PISTON SAMPLE

LOGGED WCH
 DATE 28/09/94
 CHECKED MC MC
 DATE 03/10/94

VIBRO		DRILLHOLE RECORD		HOLE NO. 64									
		CONTRACT GE/93/06		SHEET 1 of 3									
PROJECT West Kowloon Reclamation Southern Area Roads.													
METHOD VIBROCORING		CO-ORDINATES		W.O. No GE/93/06.86									
MACHINE & No. HD30(S)		E 834655.43 N 818062.87		DATE from 16/06/94 to 16/06/94									
FLUSHING MEDIUM Water		ORIENTATION Vertical		GROUND LEVEL 4.53 mPD									
Drilling Progress	Casing size	Water level (m) Shift start/end	Total core Recovery %	Solid core Recovery %	R.O.D.	Fracture Index	Tests	Samples	Reduced Level	Depth (m)	Legend	Grade	Description
16/06/94			83						0.00				Brownish grey, silty fine to coarse SAND with some subangular fine to medium gravel and occasional shell fragments. (FILL)
1								VIBROCORING	3.33	1.20			Grey, silty fine to medium SAND with some subrounded fine gravel. (FILL)
2								VIBROCORING	2.58	1.95			Yellowish brown, silty medium to coarse SAND with some shell fragments. (FILL)
3								VIBROCORING	2.03	2.50			No recovery from 2.50 to 3.00m, assumed to be Sand.
4			87					VIBROCORING	3.00	1.53	3.00		Grey silty fine to medium SAND with some shell fragments. (FILL)
5								VIBROCORING	0.63	3.90			Brown, silty medium SAND with some shell fragments. (FILL)
6								VIBROCORING	0.13	4.40			Grayish brown, silty fine to medium SAND. (FILL)
7								VIBROCORING	6.00	-1.47	6.00		Pockets (20-40mm) of soft, brown and grey, silty Clay from 5.20 to 5.25m, 5.26 to 5.29m and 5.31 to 5.34m. Yellowish brown, silty medium to coarse Sand from 5.50 to 5.90m.
8			97					VIBROCORING					Brown, slightly clayey silty fine to medium SAND. (FILL)
9								VIBROCORING					Pockets (20-60mm) of soft, brown, and grey, silty Clay from 7.43 to 7.49m, 7.64 to 7.68m and 7.81 to 7.83m. Band of grey, clayey Silt from 8.65 to 8.74m. Brown, silty medium Sand from 10.00 to 10.20m.
10			93					VIBROCORING	8.00				
								VIBROCORING	10.00				

○ SMALL DISTURBED SAMPLE △ WATER SAMPLE
□ LARGE DISTURBED SAMPLE ■ PEZOMETER TIP
▤ SPT LIKER SAMPLE ▽ STANDPIPE
▥ U78 UNDISTURBED SAMPLE ⊥ STANDARD PENETRATION TEST
▧ U100 UNDISTURBED SAMPLE ⊥ PERMEABILITY TEST
▨ MAZER SAMPLE ∇ IN-SITU VANE SHEAR TEST
▩ PISTON SAMPLE

LOGGED WCH
DATE 21/06/94
CHECKED MC WY
DATE 26/06/94

VIBRO		DRILLHOLE RECORD		HOLE NO. 64									
		CONTRACT GE/93/06		SHEET 2 of 3									
PROJECT West Kowloon Reclamation Southern Area Roads.													
METHOD VIBROCORING		CO-ORDINATES		W.O. No GE/93/06.86									
MACHINE & No. HD30(S)		E 834655.43 N 818062.87		DATE from 16/06/94 to 16/06/94									
FLUSHING MEDIUM Water		ORIENTATION Vertical		GROUND LEVEL 4.53 mPD									
Drilling Progress	Casing size	Water level (m) Shift start/end	Total core Recovery %	Solid core Recovery %	R.O.D.	Fracture Index	Tests	Samples	Reduced Level	Depth (m)	Legend	Grade	Description
16/06/94			93						-5.67	-10.20			See sheet 1 of 3
11								VIBROCORING					Dark grey and brownish grey, silty fine to coarse SAND with some shell fragments. (FILL)
12								VIBROCORING	12.00				Pockets (20-80mm) of soft, brown and grey Clay from 10.34 to 10.40m, 10.74 to 10.76m and 11.13 to 11.15m. Brown, clayey silty medium Sand from 11.80 to 12.00m.
13								VIBROCORING					Brown, clayey silty fine to medium Sand from 10.20 to 10.70m and 12.00 to 13.20m.
14								VIBROCORING					Brownish grey, silty coarse Sand from 14.80 to 15.00m and 15.86 to 16.10m.
15			97					VIBROCORING	15.00				
16								VIBROCORING					Dark grey, very clayey silty fine SAND. (FILL)
17								VIBROCORING	-11.57	-16.10			Bands of soft, brown and grey, Clay from 16.15 to 16.20m, 16.22 to 16.27m, 16.30 to 16.43m, 16.45 to 16.50m, 16.70 to 16.80m, 17.20 to 17.26m and 17.28 to 17.60m.
18								VIBROCORING	-13.11	-17.64			Yellowish brown, slightly clayey silty fine to coarse SAND. (FILL)
19			97					VIBROCORING	18.00	-13.47	-18.00		Grey, silty fine to coarse SAND with some shell fragments. (FILL)
20								VIBROCORING					Brownish grey, clayey silty fine Sand from 19.80 to 20.06m.

○ SMALL DISTURBED SAMPLE △ WATER SAMPLE
□ LARGE DISTURBED SAMPLE ■ PEZOMETER TIP
▤ SPT LIKER SAMPLE ▽ STANDPIPE
▥ U78 UNDISTURBED SAMPLE ⊥ STANDARD PENETRATION TEST
▧ U100 UNDISTURBED SAMPLE ⊥ PERMEABILITY TEST
▨ MAZER SAMPLE ∇ IN-SITU VANE SHEAR TEST
▩ PISTON SAMPLE

LOGGED WCH
DATE 21/06/94
CHECKED MC WY
DATE 26/06/94

VIBRO		DRILLHOLE RECORD		HOLE NO. 64									
		CONTRACT GE/93/08		SHEET 3 of 3									
PROJECT West Kowloon Reclamation Southern Area Roads.													
METHOD VIBROCORING		CO-ORDINATES		W.O. No GE/93/06.86									
MACHINE & No. HD30(S)		E 834655.43 N 818062.87		DATE from 16/06/94 to 16/06/94									
FLUSHING MEDIUM Water		ORIENTATION Vertical		GROUND LEVEL 4.53 mPD									
Drilling Progress	Casing size	Water level (m) Shift start/end	Total core Recovery %	Solid core Recovery %	R.Q.D.	Fracture Index	Tests	Samples	Reduced Level	Depth (m)	Legend	Grade	Description
16/06/94			97					VIBROCORING	-16.63	20.06			See sheet 2 of 3 Yellowish brown, clayey silty medium SAND. (FILL)
21			97					VIBROCORING	21.00	-16.47	-21.00		Band of grey, silty fine to medium Sand from 20.40 to 20.70m. Grey mottled brown in places, slightly clayey silty fine to medium SAND. (FILL)
22								VIBROCORING					Pockets of soft, brown silty Clay from 22.35 to 22.37m and 22.43 to 22.45m. Brownish grey clayey Silt from 23.20 to 23.35m.
23								VIBROCORING	-18.91	23.44			Dark grey, clayey silty fine SAND. (FILL)
24			97					VIBROCORING	24.00	-19.47	24.00		Brown, silty fine SAND. (FILL)
25								VIBROCORING	-20.07	24.80			Brown becoming greyish brown, slightly clayey silty medium to coarse SAND with many shell fragments and occasional intact shell (30mm). (FILL)
26								VIBROCORING	-21.27	25.00			Dark grey, light grey and brownish grey, clayey silty fine to medium SAND with occasional fine angular gravel and shell fragments. (FILL)
27								VIBROCORING	27.00	-22.47	27.00		Pocket (90mm) of soft, dark grey Clay from 25.77 to 25.86m. Band of brownish grey, clayey silty fine Sand from 25.86 to 26.14m. Pocket (60mm) of soft, light grey Clay from 26.20 to 26.30m. End of investigation hole at 27.00m
28													
29													
30													

- SMALL DISTURBED SAMPLE
- LARGE DISTURBED SAMPLE
- SPT LINER SAMPLE
- ▨ U78 UNDISTURBED SAMPLE
- ▩ U100 UNDISTURBED SAMPLE
- ▧ MAZIER SAMPLE
- ▦ PISTON SAMPLE
- △ WATER SAMPLE
- ▣ PEZOMETER TIP
- ▢ STANDPIPE
- ⊖ STANDARD PENETRATION TEST
- ⊥ PERMEABILITY TEST
- ∇ IN-SITU VANE SHEAR TEST

LOGGED WCH
 DATE 21/06/94
 CHECKED MC ML
 DATE 26/06/94

REMARKS

VIBRO		DRILLHOLE RECORD		HOLE NO. 65									
		CONTRACT GE/93/08		SHEET 1 of 3									
PROJECT West Kowloon Reclamation Southern Area Roads.													
METHOD Vibrocoring		CO-ORDINATES		W.O. No GE/93/06.86									
MACHINE & No. HD30(S)		E 834705.23 N 818069.42		DATE from 17/06/94 to 17/06/94									
FLUSHING MEDIUM Water		ORIENTATION Vertical		GROUND LEVEL 4.66 mPD									
Drilling Progress	Casing size	Water level (m) Shift start/end	Total core Recovery %	Solid core Recovery %	R.Q.D.	Fracture Index	Tests	Samples	Reduced Level	Depth (m)	Legend	Grade	Description
17/06/94			77					VIBROCORING	0.00				Grey and brownish grey silty fine to medium SAND with occasional subangular medium gravel and shell fragments. (FILL)
1								VIBROCORING	2.76	1.60			Yellowish brown silty medium SAND. (FILL)
2								VIBROCORING	2.36	2.30			No recovery from 2.30 to 3.00m, assumed to be Sand.
3								VIBROCORING	3.00	1.88	3.00		Grey and greyish brown, silty fine to medium SAND with occasional subangular fine to medium gravel. (FILL)
4								VIBROCORING					Slightly clayey silty fine Sand from 4.20 to 4.37m and 4.43 to 4.45m.
5								VIBROCORING	0.06	4.60			Greyish brown, silty fine to medium SAND with some shell fragments. (FILL)
6								VIBROCORING	-0.84	5.50			Silty coarse Sand with some shell fragments from 5.64 to 5.90m, 5.45 to 5.50m, 5.60 to 5.65m, 5.82 to 5.85m and 5.90 to 5.90m.
7			97					VIBROCORING	6.00	-1.34	6.00		Pockets (10-40mm) of dark grey Clay from 5.74 to 5.76m, 6.90 to 6.95m and brown Clay from 7.00 to 7.07m. Discrete bands of clayey Silt from 8.40 to 8.93m.
8								VIBROCORING					No recovery from 5.50 to 6.00m, assumed to be Sand.
9								VIBROCORING	8.00	-4.34	8.00		Grey becoming brownish grey, silty fine to medium SAND with occasional shell fragments. (FILL)
10			93					VIBROCORING	10.00				Occasional decayed organic matter from 11.00 to 11.45m.

- SMALL DISTURBED SAMPLE
- LARGE DISTURBED SAMPLE
- SPT LINER SAMPLE
- ▨ U78 UNDISTURBED SAMPLE
- ▩ U100 UNDISTURBED SAMPLE
- ▧ MAZIER SAMPLE
- ▦ PISTON SAMPLE
- △ WATER SAMPLE
- ▣ PEZOMETER TIP
- ▢ STANDPIPE
- ⊖ STANDARD PENETRATION TEST
- ⊥ PERMEABILITY TEST
- ∇ IN-SITU VANE SHEAR TEST

LOGGED WCH
 DATE 27/07/94
 CHECKED MC ML
 DATE 02/08/94

REMARKS

VIBRO		DRILLHOLE RECORD		HOLE NO. 65									
		CONTRACT GE/93/06		SHEET 2 of 3									
PROJECT West Kowloon Reclamation Southern Area Roads.													
METHOD Vibrocoring		CO-ORDINATES		W.O. No GE/93/06.86									
MACHINE & No. HD30(S)		E 834705.23 N 818069.42		DATE from 17/06/94 to 17/06/94									
FLUSHING MEDIUM Water		ORIENTATION Vertical		GROUND LEVEL 4.66 mPD									
Drilling Progress	Casing size	Water level (m) Shift start/end	Total core Recovery %	Solid core Recovery %	R.O.D.	Fracture Index	Tests	Samples	Reduced Level	Depth (m)	Legend	Grade	Description
17/06/94			93										See sheet 1 of 3
11								VIBROCORING	-8.78	-11.45			
12			80					VIBROCORING	12.00	-7.34	-12.00		Yellowish brown, very clayey silty fine to medium SAND with occasional subrounded medium gravel. (FILL)
13								VIBROCORING		-7.89	-12.35		Dark grey, clayey silty fine SAND. (FILL)
14								VIBROCORING		-9.04	-13.70		Dark grey becoming brownish grey, silty clayey fine to medium SAND. (FILL)
15			43					VIBROCORING		-9.74	-14.40		Yellowish brown, very clayey silty fine to coarse SAND with occasional subrounded fine to medium gravel. (FILL)
16								VIBROCORING	15.00	-10.34	-15.00		No recovery from 14.40 to 15.00m, assumed to be Sand.
17								VIBROCORING		-10.84	-15.50		Dark brownish grey, silty fine SAND with occasional subrounded fine to medium gravel. (FILL)
18								VIBROCORING		-11.63	-16.29		Yellowish brown to orangish brown, very clayey silty fine to medium SAND with occasional subrounded fine to medium gravel. (FILL)
19								VIBROCORING		-13.34	-18.00		No recovery from 16.29 to 18.00m (presence of gravel noted by the operator), assumed to be Sand.
20			97					VIBROCORING	18.00	-13.34	-18.00		Brownish grey, silty fine to medium SAND with occasional fine gravel. (FILL)
								VIBROCORING		-14.74	-19.40		Yellowish brown, greyish brown and orangish brown in places, silty medium SAND with some subangular medium to coarse gravel. (FILL)
<ul style="list-style-type: none"> ● SMALL DISTURBED SAMPLE ○ LARGE DISTURBED SAMPLE □ SPT LNER SAMPLE ▨ U76 UNDISTURBED SAMPLE ▩ U100 UNDISTURBED SAMPLE ▧ HAZER SAMPLE ▦ PISTON SAMPLE 		<ul style="list-style-type: none"> △ WATER SAMPLE ■ PIZOMETER TIP □ STANDPIPE ⊥ STANDARD PENETRATION TEST ⊥ PERMEABILITY TEST ⊥ IN-SITU VANE SHEAR TEST 		LOGGED <u>WCH</u> DATE <u>27/07/94</u> CHECKED <u>MC</u> DATE <u>02/08/94</u>		REMARKS							

VIBRO		DRILLHOLE RECORD		HOLE NO. 65									
		CONTRACT GE/93/06		SHEET 3 of 3									
PROJECT West Kowloon Reclamation Southern Area Roads.													
METHOD Vibrocoring		CO-ORDINATES		W.O. No GE/93/06.86									
MACHINE & No. HD30(S)		E 834705.23 N 818069.42		DATE from 17/06/94 to 17/06/94									
FLUSHING MEDIUM Water		ORIENTATION Vertical		GROUND LEVEL 4.66 mPD									
Drilling Progress	Casing size	Water level (m) Shift start/end	Total core Recovery %	Solid core Recovery %	R.O.D.	Fracture Index	Tests	Samples	Reduced Level	Depth (m)	Legend	Grade	Description
17/06/94			97										See sheet 2 of 3
21								VIBROCORING	21.00				
22								VIBROCORING		-16.84	-21.50		Dark grey and grey, sandy clayey SILT with occasional subangular fine gravel. (FILL)
23								VIBROCORING					Pockets (30-120mm) of soft, dark grey silty Clay from 21.60 to 21.70m, 21.85 to 22.00m, 22.10 to 22.30m, 22.52 to 22.58m, 22.76 to 22.81 and 22.88 to 23.00m.
24								VIBROCORING		-19.14	-23.80		Dark greenish grey Clay from 23.45 to 23.80m.
25								VIBROCORING	24.00	-19.34	-24.00		Orangish brown, grey in places, very clayey silty fine to coarse SAND with occasional fine subangular quartz gravel. (ALLUVIUM) (CHEK LAI KOK FORMATION)
26								VIBROCORING					End of Investigation Hole at 24.00m
27								VIBROCORING					
28								VIBROCORING					
29								VIBROCORING					
30								VIBROCORING					
<ul style="list-style-type: none"> ● SMALL DISTURBED SAMPLE ○ LARGE DISTURBED SAMPLE □ SPT LNER SAMPLE ▨ U76 UNDISTURBED SAMPLE ▩ U100 UNDISTURBED SAMPLE ▧ HAZER SAMPLE ▦ PISTON SAMPLE 		<ul style="list-style-type: none"> △ WATER SAMPLE ■ PIZOMETER TIP □ STANDPIPE ⊥ STANDARD PENETRATION TEST ⊥ PERMEABILITY TEST ⊥ IN-SITU VANE SHEAR TEST 		LOGGED <u>WCH</u> DATE <u>27/07/94</u> CHECKED <u>MC</u> DATE <u>02/08/94</u>		REMARKS							

VIBRO		DRILLHOLE RECORD		HOLE NO. 66								
		CONTRACT GE/93/06		SHEET 1 of 4								
PROJECT West Kowloon Reclamation Southern Area Roads.												
METHOD Vibrocoring		CO-ORDINATES		W.O. No GE/93/06.86								
MACHINE & No. HD30(S)		E 834755.23 N 818066.96		DATE from 20/06/94 to 21/06/94								
FLUSHING MEDIUM Water		ORIENTATION Vertical		GROUND LEVEL 4.69 mPD								
Drilling Progress	Casing size	Water level (m) Shift start/end	Total core Recovery %	Solid core Recovery %	R.O.D. Fracture Index	Tests	Samples	Reduced Level	Depth (m)	Legend	Grade	Description
20/06/94			80				VIBROCORING	0.00				Greyish brown, silty fine to medium SAND with some subangular to angular fine gravel and occasional shell fragments. (FILL)
1							VIBROCORING	3.29	1.40			Grey mottled yellow in places, silty fine to medium SAND with occasional fine gravel and shell fragments. (FILL)
2							VIBROCORING	2.29	2.40			Pockets (50mm) of soft, dark grey Clay from 2.35 to 2.40m.
3			83				VIBROCORING	3.00	1.69	3.00		No recovery from 2.40 to 3.00m, assumed to be Sand.
4							VIBROCORING	0.19	4.50			Yellowish brown and greyish brown, silty fine to medium SAND with some shell fragments. (FILL) Clayey silty fine Sand from 3.80 to 4.02m.
5							VIBROCORING	-0.81	5.50			Yellowish and greyish brown, grey in places, silty fine to medium SAND with occasional angular fine gravel. (FILL)
6			87				VIBROCORING	6.00	-1.31	6.00		Pockets (20mm) of soft, dark grey silty Clay at 5.25m, 6.90m, 7.05m, 8.28m, 8.46m, 8.55m, 8.62m, 9.95m, 10.45m, 10.58m, 10.98m, 11.22m, and 11.85m.
7							VIBROCORING					Clayey silty medium to coarse Sand from 5.20 to 5.30m, 9.25 to 9.65m, 10.37 to 10.45m, 10.50 to 10.55m, 10.65 to 10.70m and 11.20 to 11.25m.
8							VIBROCORING					Discrete layers of clayey silty fine Sand from 11.25 to 11.69m.
9			97				VIBROCORING	9.00				No recovery from 5.50 to 6.00m, assumed to be Sand.
10							VIBROCORING	10.00				
LOGGED <u>WCH</u> DATE <u>28/09/94</u> CHECKED <u>MC</u> <u>WC</u> DATE <u>03/10/94</u>												

VIBRO		DRILLHOLE RECORD		HOLE NO. 66								
		CONTRACT GE/93/06		SHEET 2 of 4								
PROJECT West Kowloon Reclamation Southern Area Roads.												
METHOD Vibrocoring		CO-ORDINATES		W.O. No GE/93/06.86								
MACHINE & No. HD30(S)		E 834755.23 N 818066.96		DATE from 20/06/94 to 21/06/94								
FLUSHING MEDIUM Water		ORIENTATION Vertical		GROUND LEVEL 4.69 mPD								
Drilling Progress	Casing size	Water level (m) Shift start/end	Total core Recovery %	Solid core Recovery %	R.O.D. Fracture Index	Tests	Samples	Reduced Level	Depth (m)	Legend	Grade	Description
20/06/94			87				VIBROCORING					See sheet 1 of 4
11							VIBROCORING	12.00	-7.31	12.00		Dark brownish grey and yellowish brown, silty medium to coarse SAND with some shell fragments. (FILL)
12			98				VIBROCORING					Dark brownish grey and yellowish brown, fine to medium SAND. (FILL)
13							VIBROCORING	-8.71	13.40			Orangeish brown, slightly clayey silty medium Sand from 13.40 to 13.50m and 13.75 to 13.90m.
14							VIBROCORING	-9.81	14.50			Grey, yellowish brown and dark grey in places, very clayey in places, silty fine to medium SAND with some angular fine to medium gravel. (FILL)
15			96				VIBROCORING	15.00				Yellowish brown, very clayey silty medium Sand from 14.65 to 14.70m, 14.76 to 14.80m, 15.55 to 16.30m, 16.70 to 16.80m, 16.97 to 17.20m and 18.00 to 18.50m.
16							VIBROCORING					Pockets (20-60mm) of soft, dark grey Clay from 14.30 to 14.35m, 16.40 to 16.56m, 17.30 to 17.33m, 17.49 to 17.55m and 17.80m.
17							VIBROCORING					Slightly oily dark brown clayey silty fine to medium Sand from 16.30 to 16.70m and 17.40 to 17.55m.
18			96				VIBROCORING	18.00				
19							VIBROCORING	-13.81	18.50			Light and dark grey, yellowish brown and yellow in places, very clayey in places, silty fine to medium SAND with some angular fine to medium gravel. (FILL)
20							VIBROCORING	20.00				Yellowish brown clayey silty coarse Sand from 19.10 to 19.22m, 19.66 to 19.67m, 20.42 to
LOGGED <u>WCH</u> DATE <u>28/09/94</u> CHECKED <u>MC</u> <u>WC</u> DATE <u>03/10/94</u>												

VIBRO		DRILLHOLE RECORD		HOLE NO. 66									
		CONTRACT GE/93/06		SHEET 3 of 4									
PROJECT West Kowloon Reclamation Southern Area Roads.													
METHOD Vibrocoring		CO-ORDINATES		W.O. No GE/93/06.86									
MACHINE & No. HD30(S)		E 834755.23 N 818066.96		DATE from 20/06/94 to 21/06/94									
FLUSHING MEDIUM Water		ORIENTATION Vertical		GROUND LEVEL 4.69 mPD									
Drilling Progress	Casing size	Water level (m) Shift start/end	Total core Recovery %	Solid core Recovery %	R.O.D.	Fracture Index	Tests	Samples	Reduced Level	Depth (m)	Legend	Grade	Description
21/08/94			96					VIBROCORING	21.00				20.58m, 21.06 to 21.15m, 21.30 to 21.50m, 21.85 to 21.90m, 22.59 to 22.61m, 23.06 to 23.10m, 24.20 to 24.35m, 24.80 to 25.00m, 25.30 to 25.32m and 25.48 to 25.50m.
21			98					VIBROCORING					Pockets (20-60mm) of soft, dark grey and brown Clay from 18.60m, 18.70m, 18.78m, 20.16m, 20.37 to 20.40m, 20.60m, 20.80 to 20.85m, 21.26m, 21.66 to 21.72m, 21.86m, 22.40m, 23.35 to 23.40m, 23.40 to 23.52m and 23.70m.
22								VIBROCORING					Slightly oily dark brown clayey silty fine to medium Sand from 23.10 to 23.20m and 23.29 to 23.59m.
23								VIBROCORING					
24			98					VIBROCORING	24.00				
25								VIBROCORING					
26								VIBROCORING	-20.91	-25.60			Grey, dark grey, yellowish brown and black in places, very clayey in places, clayey silty fine to coarse SAND with some angular fine gravel. (FILL)
27			96					VIBROCORING	27.00				Yellowish brown, clayey silty fine to medium Sand from 25.79 to 25.82m and 28.52 to 28.62m. Soft, dark grey, slightly silty Clay from 26.56 to 26.97m.
28								VIBROCORING					Pockets (10-30mm) of dark grey and light grey Clay at 25.83m, 25.90m, 25.96m, 26.50m to 26.55m, 27.40m, 27.45m and 27.50 to 27.56m. Dark brown slightly oily clayey silty fine Sand with some organic material from 26.42 to 26.50m, 28.32 to 28.36m and 29.34 to 29.50m.
29								VIBROCORING	-24.81	-28.60			
30								VIBROCORING	-25.31	-30.00			Light grey and brownish yellow, very clayey silty medium to coarse SAND, (ALLUVIUM) (CHEK LAP)

VIBRO		DRILLHOLE RECORD		HOLE NO. 66									
		CONTRACT GE/93/06		SHEET 4 of 4									
PROJECT West Kowloon Reclamation Southern Area Roads.													
METHOD Vibrocoring		CO-ORDINATES		W.O. No GE/93/06.86									
MACHINE & No. HD30(S)		E 834755.23 N 818066.96		DATE from 20/06/94 to 21/06/94									
FLUSHING MEDIUM Water		ORIENTATION Vertical		GROUND LEVEL 4.69 mPD									
Drilling Progress	Casing size	Water level (m) Shift start/end	Total core Recovery %	Solid core Recovery %	R.O.D.	Fracture Index	Tests	Samples	Reduced Level	Depth (m)	Legend	Grade	Description
													KOK FORMATION)
31													Pocket (60mm) of soft, yellow Clay from 29.70 to 29.76m. End of investigation hole at 30.00m
32													
33													
34													
35													
36													
37													
38													
39													
40													

○ SMALL DISTURBED SAMPLE △ WATER SAMPLE
 □ LARGE DISTURBED SAMPLE ▽ PEZOMETER TIP
 ▨ SPT LINER SAMPLE □ STANDPIPE
 ▩ U78 UNDISTURBED SAMPLE ⊕ STANDARD PENETRATION TEST
 ⊖ U100 UNDISTURBED SAMPLE ⊕ PERMEABILITY TEST
 ⊕ MAZIER SAMPLE ⊕ IN-SITU VANE SHEAR TEST
 ⊖ PISTON SAMPLE

LOGGED WCH
 DATE 28/09/94
 CHECKED MC MLL
 DATE 03/10/94

REMARKS

LOGGED WCH
 DATE 28/09/94
 CHECKED MC MLL
 DATE 03/10/94

REMARKS

VIBRO										DRILLHOLE RECORD		HOLE NO. 67	
CONTRACT GE/93/06										SHEET 1 of 3			
PROJECT West Kowloon Reclamation Southern Area Roads.													
METHOD Vibrocoring				CO-ORDINATES				W.O. No GE/93/06.86					
MACHINE & No. HD30(S)				E 834761.00				DATE from 20/06/94 to 20/06/94					
FLUSHING MEDIUM Water				ORIENTATION Vertical				GROUND LEVEL 4.08 mPD					
Drilling Progress	Casing size	Water level (m) Shift start/end	Total core Recovery %	Solid core Recovery %	R.Q.D.	Fracture Index	Tests	Samples	Reduced Level	Depth (m)	Legend	Grade	Description
20/06/94			80					VIBROCORING	0.00				Grey, greyish brown and dark brown, silty fine to medium SAND with some angular fine gravel and much shell fragments. (FILL)
1								VIBROCORING					Silty coarse Sand with much shell fragments from 0.00 to 0.30m, 3.00 to 3.20m, 3.45 to 3.80m.
2								VIBROCORING	1.88	2.40			Slightly oily brown and black, slightly clayey silty fine Sand with occasional organic matter from 3.80 to 3.90m.
3			80					VIBROCORING	3.00	3.00			No recovery from 2.40 to 3.00m, assumed to be Sand.
4								VIBROCORING	0.18	3.90			Greyish brown and yellowish brown, dark brown and black in places, silty fine to coarse SAND with occasional angular fine gravel and shell fragments. (FILL)
5								VIBROCORING	-1.32	5.40			Slightly oily dark brown and black silty medium Sand from 9.25 to 9.42m.
6			97					VIBROCORING	6.00	-1.82	6.00		Decayed organic matter from 9.35 to 9.42m.
7								VIBROCORING					Discrete layers of slightly clayey silty fine Sand from 7.80 to 7.95m, 8.15 to 8.20m and 10.45 to 10.60m.
8								VIBROCORING					Pocket (30mm) of soft, grey Clay at 8.45m.
9			97					VIBROCORING	8.00				No recovery from 5.40 to 6.00m, assumed to be Sand.
10								VIBROCORING	10.00				

- SMALL DISTURBED SAMPLE
- LARGE DISTURBED SAMPLE
- SPT LINER SAMPLE
- U78 UNDISTURBED SAMPLE
- U100 UNDISTURBED SAMPLE
- MAZIER SAMPLE
- PISTON SAMPLE
- WATER SAMPLE
- PIEZOMETER TIP
- STANOFFE
- STANDARD PENETRATION TEST
- PERMEABILITY TEST
- IN-SITU VANE SHEAR TEST

LOGGED WCH
 DATE 28/09/94
 CHECKED MC WCL
 DATE 03/10/94

REMARKS

VIBRO										DRILLHOLE RECORD		HOLE NO. 67	
CONTRACT GE/93/06										SHEET 2 of 3			
PROJECT West Kowloon Reclamation Southern Area Roads.													
METHOD Vibrocoring				CO-ORDINATES				W.O. No GE/93/06.86					
MACHINE & No. HD30(S)				E 834761.00				DATE from 20/06/94 to 20/06/94					
FLUSHING MEDIUM Water				ORIENTATION Vertical				GROUND LEVEL 4.08 mPD					
Drilling Progress	Casing size	Water level (m) Shift start/end	Total core Recovery %	Solid core Recovery %	R.Q.D.	Fracture Index	Tests	Samples	Reduced Level	Depth (m)	Legend	Grade	Description
20/06/94			97					VIBROCORING					See sheet 1 of 3
11								VIBROCORING	-6.57	10.85			Brownish grey, silty fine SAND with occasional shell fragments. (FILL)
12								VIBROCORING	12.00				Pockets (20-60mm) of soft, dark grey Clay at 10.78m, 11.90m, 12.65 to 12.71m.
13								VIBROCORING					Discrete layers of slightly clayey silty fine Sand from 10.65 to 10.75m, 11.45 to 11.50m and 11.65 to 11.72m.
14								VIBROCORING	-9.62	13.60			Grey, dark brown, black in places, silty fine to coarse SAND with occasional angular fine gravel and shell fragments. (FILL)
15								VIBROCORING	15.00				Dark brown to black slightly oily coarse Sand with some angular fine gravel from 14.50 to 14.58m, 15.64 to 15.72m.
16								VIBROCORING	-11.72	15.80			Pockets (20mm) of soft, grey Clay at 14.65m and 14.73m.
17								VIBROCORING					Decayed organic matter from 15.62 to 15.72m.
18								VIBROCORING	18.00				Grey and brownish grey, yellowish brown in places, silty fine SAND with occasional shell fragments. (FILL)
19								VIBROCORING					Disturbed clayey silty coarse Sand from 17.75 to 17.82m, 18.62 to 18.72m.
20								VIBROCORING	-15.52	19.00			Pockets (10-50mm) of soft, grey Clay at 18.54m, 19.20m, 19.40 to 19.46m and 19.50m.
20								VIBROCORING	20.00				Yellowish brown, dark grey and brownish grey, clayey in places, silty fine to medium SAND with

- SMALL DISTURBED SAMPLE
- LARGE DISTURBED SAMPLE
- SPT LINER SAMPLE
- U78 UNDISTURBED SAMPLE
- U100 UNDISTURBED SAMPLE
- MAZIER SAMPLE
- PISTON SAMPLE
- WATER SAMPLE
- PIEZOMETER TIP
- STANOFFE
- STANDARD PENETRATION TEST
- PERMEABILITY TEST
- IN-SITU VANE SHEAR TEST

LOGGED WCH
 DATE 28/09/94
 CHECKED MC WCL
 DATE 03/10/94

REMARKS

VIBRO		DRILLHOLE RECORD		HOLE NO. 67									
		CONTRACT GE/93/06		SHEET 3 of 3									
PROJECT West Kowloon Reclamation Southern Area Roads.													
METHOD Vibrocoring		CO-ORDINATES		W.O. No GE/93/06.86									
MACHINE & No. HD30(S)		E 834761.00 N 818017.00		DATE from 20/06/94 to 20/06/94									
FLUSHING MEDIUM Water		ORIENTATION Vertical		GROUND LEVEL 4.08 mPD									
Drilling Progress	Casing size	Water level (m) Shift start/end	Total core Recovery %	Solid core Recovery %	R.O.D.	Fracture Index	Tests	Samples	Reduced Level	Depth (m)	Legend	Grade	Description
20/06/94			97					VIBROCORING					occasional angular fine to coarse gravel. (FILL) Pockets (10-50mm) of dark grey Clay from 19.80m, 19.85 to 19.92m, 20.10 to 20.20m, 20.33m, 20.42 to 20.46m and 20.85 to 20.90m.
21			97					VIBROCORING	21.00	-16.92	-21.00		Greyish brown and light grey, dark brown in places, silty fine to medium SAND with occasional shell fragments. (FILL) Silty coarse Sand from 22.85 to 23.00m. Clayey silty fine to medium Sand from 23.35 to 23.70m. Pockets (20mm) of soft, dark grey and yellowish Clay at 23.30m, 23.46m and 23.50m.
22													
23													
24									-19.82	-23.00			Greyish brown, clayey silty coarse SAND. (FILL ?) End of Investigation Hole at 24.00m
25									-10.02	-24.00			
26													
27													
28													
29													
30													
<ul style="list-style-type: none"> ● SMALL DISTURBED SAMPLE ○ LARGE DISTURBED SAMPLE □ SPT LINER SAMPLE ▨ U78 UNDISTURBED SAMPLE ▩ U100 UNDISTURBED SAMPLE ▧ MAZIER SAMPLE ▦ PISTON SAMPLE △ WATER SAMPLE ◻ PIZOMETER TIP ◼ STANDPIPE ⊖ STANDARD PENETRATION TEST ⊕ PERMEABILITY TEST ⊗ IN-SITU VANE SHEAR TEST 												LOGGED <u>WCH</u>	REMARKS
												DATE <u>28/09/94</u>	
												CHECKED <u>MC</u> <u>ML</u>	
												DATE <u>03/10/94</u>	

VIBRO		DRILLHOLE RECORD		HOLE NO. 68									
		CONTRACT GE/93/06		SHEET 1 of 3									
PROJECT West Kowloon Reclamation Southern Area Roads.													
METHOD VIBROCORING		CO-ORDINATES		W.O. No GE/93/06.86									
MACHINE & No. HD30(S)		E 834768.21 N 817968.30		DATE from 18/06/94 to 18/06/94									
FLUSHING MEDIUM Water		ORIENTATION Vertical		GROUND LEVEL 4.30 mPD									
Drilling Progress	Casing size	Water level (m) Shift start/end	Total core Recovery %	Solid core Recovery %	R.O.D.	Fracture Index	Tests	Samples	Reduced Level	Depth (m)	Legend	Grade	Description
18/06/94			33					VIBROCORING	0.00				Brownish grey, silty fine SAND with occasional fine subangular to subrounded gravel and shell fragments. (FILL)
1								VIBROCORING	3.30	1.00			Some subrounded coarse Gravel from 0.86 to 0.92m. Cobbles recovered from 3.00 to 3.06m and 3.13 to 3.20m. No recovery from 1.00 to 3.00m and 3.21 to 6.00m (presence of gravel and cobbles noted by the operator), assumed to be Sand.
2													
3			7					VIBROCORING	3.00	1.30	3.00		
4									1.09	3.21			
5													
6			80					VIBROCORING	8.00	-1.70	6.00		Grey and greyish brown, silty fine SAND. (FILL)
7								VIBROCORING	-2.10	6.40			Greyish brown, silty fine to coarse SAND with many shell fragments and some subrounded coarse gravel. (FILL) Pockets (20-100mm) of soft, dark grey Clay from 8.03 to 8.05m, 8.20 to 8.30m and 11.66 to 11.70m. Subrounded Cobbles of concrete from 10.48 to 10.60m. No recovery from 8.40 to 9.00m, assumed to be Sand.
8									-4.10	8.40			
9			97					VIBROCORING	8.00	-4.70	8.00		
10									10.00				
<ul style="list-style-type: none"> ● SMALL DISTURBED SAMPLE ○ LARGE DISTURBED SAMPLE □ SPT LINER SAMPLE ▨ U78 UNDISTURBED SAMPLE ▩ U100 UNDISTURBED SAMPLE ▧ MAZIER SAMPLE ▦ PISTON SAMPLE △ WATER SAMPLE ◻ PIZOMETER TIP ◼ STANDPIPE ⊖ STANDARD PENETRATION TEST ⊕ PERMEABILITY TEST ⊗ IN-SITU VANE SHEAR TEST 												LOGGED <u>WCH</u>	REMARKS
												DATE <u>21/06/94</u>	
												CHECKED <u>MC</u> <u>ML</u>	
												DATE <u>26/06/94</u>	

VIBRO										DRILLHOLE RECORD		HOLE NO. 68	
CONTRACT GE/93/08										SHEET 2 of 3			
PROJECT West Kowloon Reclamation Southern Area Roads.													
METHOD VIBROCORING				CO-ORDINATES				W.O. No GE/93/06.86					
MACHINE & No. HD30(S)				E 834768.21				DATE from 18/06/94 to 18/06/94					
N 817968.30													
FLUSHING MEDIUM Water				ORIENTATION Vertical				GROUND LEVEL 4.30 mPD					
Drilling Progress	Casing size	Water level (m) Shift start/end	Total core Recovery %	Solid core Recovery %	R.O.D.	Fracture Index	Tests	Samples	Reduced Level	Depth (m)	Legend	Grade	Description
18/06/94			97					VIBROCORING					See sheet 1 of 3
11								VIBROCORING	-7.40	11.70			
12			97					VIBROCORING	12.00				Grey and brownish grey, silty fine to medium SAND with some shell fragments. (FILL) Silty fine to coarse Sand with some angular fine to medium gravel from 12.60 to 12.98m. Pocket (20mm) of soft, grey Clay from 11.68 to 11.70m.
13								VIBROCORING	-9.70	14.00			Brownish grey, silty fine SAND with occasional subangular fine gravel. (FILL)
14								VIBROCORING	15.00	-10.70	-15.00		Pockets (20-250mm) of grey, Clay from 14.15 to 14.17m; brown Clay from 14.13 to 14.16m; grey and red clayey Silt from 14.19 to 14.47m. Dark grey, clayey silty fine to medium SAND with occasional fragments of brick, tile and rock. (FILL)
15			97					VIBROCORING	18.00	-13.72	-18.02		Yellowish brown and dark grey in places, silty fine to coarse SAND with occasional subrounded coarse gravel and cobbles. (FILL) Silty coarse Sand with some shell fragments from 18.00 to 19.36m. Occasional subrounded cobbles from 18.53 to 18.60m and 21.40 to 21.60m.
16								VIBROCORING					
17								VIBROCORING					
18			97					VIBROCORING					
19								VIBROCORING					
20								VIBROCORING					
<ul style="list-style-type: none"> ● SMALL DISTURBED SAMPLE ○ LARGE DISTURBED SAMPLE □ SPT LINER SAMPLE ▣ U78 UNDISTURBED SAMPLE ▤ U100 UNDISTURBED SAMPLE ⊖ MAZIER SAMPLE ⊕ PICTON SAMPLE △ WATER SAMPLE ⊖ PNEUMETER TIP ⊕ STANDPIPE ⊖ STANDARD PENETRATION TEST ⊕ PERMEABILITY TEST ⊖ IN-SITU VANE SHEAR TEST 													
LOGGED <u>WCH</u> DATE <u>21/06/94</u> CHECKED <u>MC</u> <u>MJC</u> DATE <u>26/06/94</u>													
REMARKS													

VIBRO										DRILLHOLE RECORD		HOLE NO. 68	
CONTRACT GE/93/06										SHEET 3 of 3			
PROJECT West Kowloon Reclamation Southern Area Roads.													
METHOD VIBROCORING				CO-ORDINATES				W.O. No GE/93/06.86					
MACHINE & No. HD30(S)				E 834768.21				DATE from 18/06/94 to 18/06/94					
N 817968.30													
FLUSHING MEDIUM Water				ORIENTATION Vertical				GROUND LEVEL 4.30 mPD					
Drilling Progress	Casing size	Water level (m) Shift start/end	Total core Recovery %	Solid core Recovery %	R.O.D.	Fracture Index	Tests	Samples	Reduced Level	Depth (m)	Legend	Grade	Description
18/06/94			97					VIBROCORING					Pockets (50-100mm) of brownish and greenish grey, Clay from 19.41 to 19.46m and 19.77 to 19.87m.
21			83					VIBROCORING	21.00	-16.70	-21.00		Pocket (60mm) of soft, grey Clay from 20.03 to 20.10m. Silty fine Sand from 19.36 to 19.92m.
22								VIBROCORING	-17.20	-21.50			Grayish brown clayey silty fine Sand from 20.35 to 20.55m and 20.74 to 21.00m. No recovery from 21.00 to 21.50m, assumed to be Sand.
23								VIBROCORING	-18.72	-23.02			Silty medium Sand from 22.00 to 22.60m. Pinkish brown slightly oily clayey silty fine to medium Sand from 22.50 to 23.00m.
24			97					VIBROCORING	24.00	-19.70	-24.00		Dark grey, clayey SILT with occasional angular fine to medium gravel (brick) and shell fragments. (FILL)
25								VIBROCORING	-21.04	-25.34			Scattered pockets (10-80mm) of gray Clay from 23.08 to 23.12m, 23.18 to 23.24m, 23.41 to 23.50m, 23.51 to 23.60m, 23.64 to 23.72m; and brown Clay from 23.80 to 23.88m.
26								VIBROCORING					Grayish brown, silty medium SAND with some coarse shell fragments. (FILL) Silty coarse Sand from 25.15 to 25.34m.
27								VIBROCORING	27.00	-22.70	-27.00		Light brownish grey becoming light grey, slightly clayey silty coarse SAND. (ALLUVIUM) (CHEK LAP KOK FORMATION) Pocket (60mm) of soft, brown Clay from 25.34 to 26.40m. End of investigation hole at 27.00m
28								VIBROCORING					
29								VIBROCORING					
30								VIBROCORING					
<ul style="list-style-type: none"> ● SMALL DISTURBED SAMPLE ○ LARGE DISTURBED SAMPLE □ SPT LINER SAMPLE ▣ U78 UNDISTURBED SAMPLE ▤ U100 UNDISTURBED SAMPLE ⊖ MAZIER SAMPLE ⊕ PICTON SAMPLE △ WATER SAMPLE ⊖ PNEUMETER TIP ⊕ STANDPIPE ⊖ STANDARD PENETRATION TEST ⊕ PERMEABILITY TEST ⊖ IN-SITU VANE SHEAR TEST 													
LOGGED <u>WCH</u> DATE <u>21/06/94</u> CHECKED <u>MC</u> <u>WCL</u> DATE <u>26/06/94</u>													
REMARKS													