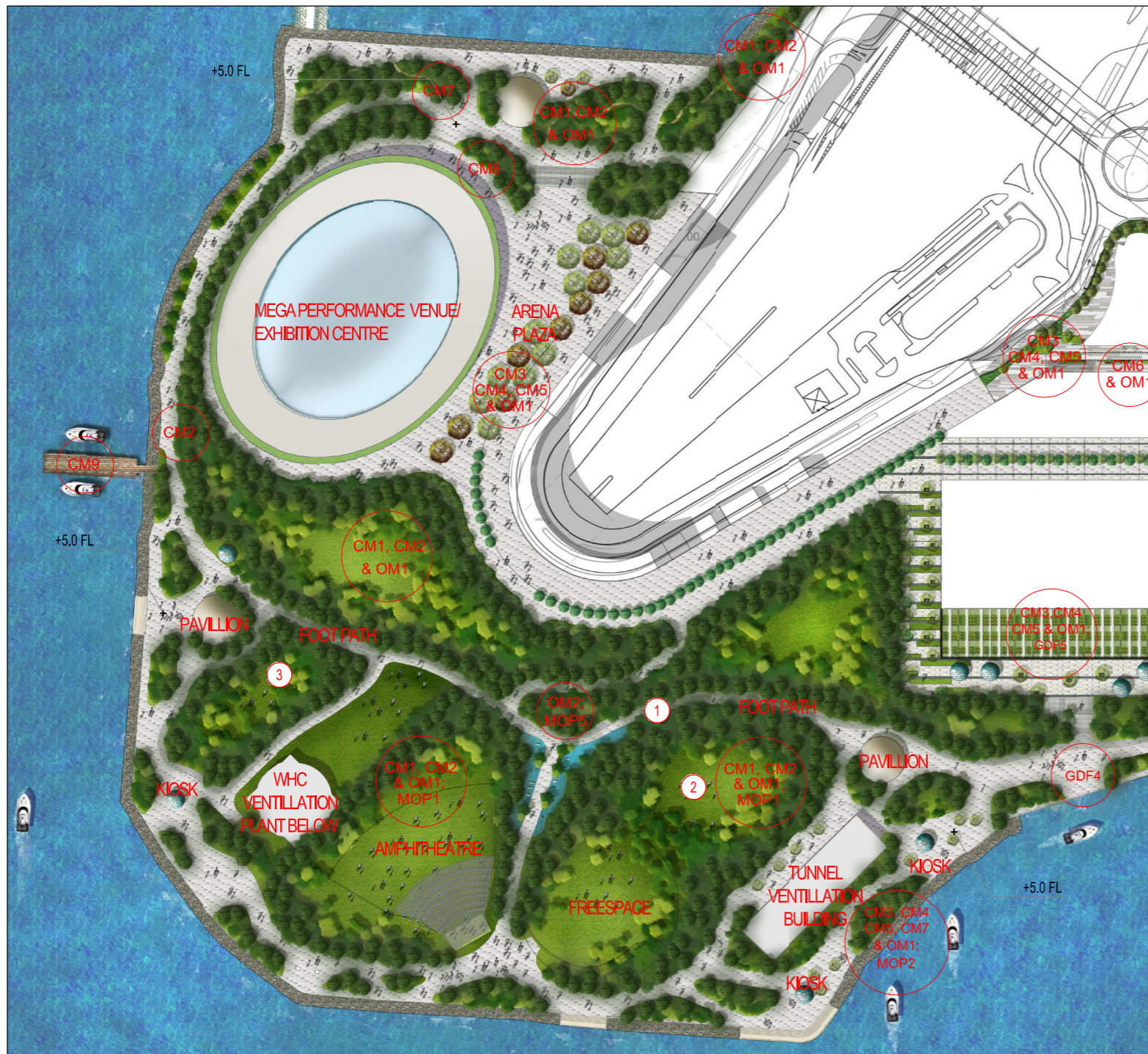




KEY PLAN 1:25,000M @A3



PARK PLAN SCALE 1:3000M @A3 1:3000 SCALE BAR

LIST OF LANDSCAPE MITIGATION MEASURES:

- CM1: TREES SHOULD BE RETAINED IN SITU AS FAR AS POSSIBLE, SHOULD TREE REMOVAL BE UNAVOIDABLE, TREE WILL BE TRANSPLANTED OR FELLED.
- CM2: COMPENSATORY TREE PLANTING
- CM3: BUFFER TREES FOR SCREENING PURPOSES TO SOFTEN THE HARD ARCHITECTURAL AND ENGINEERING STRUCTURES AND FACILITIES.
- CM4: SOFTSCAPE TREATMENTS SUCH AS VERTICAL GREEN WALL PANEL PLANTING OF CLIMBING AND/OR WEeping PLANTS, ETC. TO MAXIMIZE THE GREEN COVERAGE AND SOFTEN THE HARD ARCHITECTURAL AND ENGINEERING STRUCTURES AND FACILITIES.
- CM5: ROOF GREENING BY MEANS OF INTENSIVE AND EXTENSIVE GREEN ROOF TO MAXIMIZE THE GREEN COVERAGE AND IMPROVE AESTHETIC APPEAL AND VISUAL QUALITY OF THE BUILDING/STRUCTURE.
- CM6: SENSITIVE STREETSCAPE DESIGN SHOULD BE INCORPORATED ALONG ALL NEW ROADS AND STREETS.
- CM7: STRUCTURE, ORNAMENTAL PLANTING SHALL BE PROVIDED ALONG AMENITY STRIPS TO ENHANCE THE LANDSCAPE QUALITY.
- CM8: LANDSCAPE DESIGN SHALL BE INCORPORATED TO ARCHITECTURAL AND ENGINEERING STRUCTURES IN ORDER TO PROVIDE AESTHETICALLY PLEASING DESIGNS.
- CM9: MINIMIZE THE STRUCTURE OF MARINE FACILITIES TO BUILT ON THE SEA BED AND FORESHORE IN ORDER TO MINIMIZE THE AFFECTED EXTENT TO THE WATERBODY
- OM1: PROVIDE PROPER PLANTING MAINTENANCE
- OM2: PROVISION OF OPEN SPACE IN VARIOUS FORMS AND AT DIFFERENT LEVELS ON OR ABOVE GROUND, INCLUDING PARK, WATERFRONT PROMENADE, PIAZZAS AND TERRACE GARDEN AND ASSOCIATED GREEN CONNECTIONS FOR PUBLIC ENJOYMENT.

REFERENCE IMAGES

LIST OF GOOD DESIGN FEATURES:

- GDF1: WITH WELL DESIGNED LOW TO MEDIUM-RISE BUILDINGS, THE PROPOSED WKCD DEVELOPMENT IS ANTICIPATED TO BE HIGHLY COMPATIBLE WITH THE SURROUNDINGS.
 - GDF2: THE BUILDINGS WITHIN THE WKCD ARE DESIGNED TO ALLOW VISUAL PERMEABILITY FROM THE WKT TO VICTORIA HARBOUR, WHICH IS ACHIEVED BY ALIGNMENT OF THE BUILDINGS ON THE WKCD.
 - GDF3: AN OPEN VISTA AND GREEN CORRIDOR FROM THE HERITAGE SITES CONSISTING OF THE DECLARED MONUMENTS OF ST. ANDREW'S CHURCH, FORMER KOWLOON BRITISH SCHOOL AND HONG KONG OBSERVATORY THROUGH KOWLOON PARK, AND ALONG WKCD WATERFRONT PROMENADE TOWARDS THE VICTORIA HARBOUR IS PRESERVED.
 - GDF4: THE OPEN SPACE WILL BE PROVIDED IN VARIOUS FORMS AT GRADE IN THE WKCD, INCLUDING PIAZZAS, A LANDSCAPED WATERFRONT PROMENADE AND VARIOUS GREEN SPACES.
 - GDF 5: UNIQUE TERRACE GARDENS IS CONSIDERED AS GOOD DESIGN FEATURE TO LESSEN THE VISUAL IMPACTS AND PROVIDE NEW VISUAL RESOURCES WHEN VIEWED FROM THE VSRs AT HIGHER LEVELS.
- VISUAL MITIGATION MEASURES DURING OPERATION PHASE:
- MOP1: UNDULATING BERMS AND THE TREE PLANTED IN THE SURROUNDINGS OF THE VENTILATION BUILDINGS.
 - MOP2: CLUSTERS OF SHADE PLANTING AND APPROPRIATE LANDSCAPING ARE DESIGNED TO PROVIDE A RELAXING WATERFRONT ENVIRONMENT AND SOFTEN THE WATER EDGE.
 - MOP3: THE UNIQUE DESIGNED ROOF TOP GARDENS AND GREEN ROOF COULD BE CONSIDERED AS MITIGATION MEASURES TO LESSEN THE VISUAL RESOURCES WHEN VIEWED FROM THE VSRs AT HIGHER LEVELS.
 - MOP4: BUFFER TREES FOR SCREENING PURPOSES OR OTHER SOFTSCAPE TREATMENTS E.G. GREEN WALL/ CLIMBERS/ GREEN ROOF/ VERTICAL GREENING SHALL BE INCORPORATED TO SOFTEN THE HARD ARCHITECTURAL AND ENGINEERING STRUCTURES AND FACILITIES.
 - MOP5: ADOPTION OF NATURAL COLOUR TONES FOR WIND TURBINES LOCATED ALONG THE WATERFRONT, TO MAKE THEM VISUALLY MORE COMPATIBLE WITH THE SURROUNDINGS.
 - MOP6: APPROPRIATE POSITIONING AND ANGLING OF THE SOLAR PANELS TO AVOID SIGNIFICANT VISUAL IMPACTS ON THE VSRs LOCATED AT UPPER LEVELS IN CLOSE PROXIMITY.
 - MOP7: AESTHETIC DESIGN OF ROADS AND STREETSCAPES.
 - MOP8: HUMAN SCALE DESIGN FOR THE WKT PLAZA AND THE INTERSECTION OF CANTON ROAD AND AUSTIN ROAD WEST.
 - MOP9: LIGHTING CONTROL MEASURES SUCH AS THE USE OF SENSORS AND TIMERS COULD HELP REDUCE USAGE AFTER HOURS.

Remark: All Piers and Arts Pontoons should be subject to PHO and relevant Government Departments Agreement

備註: 所有碼頭及藝術浮橋有待<保護海港條例>及有關政府部門同意。
* Reference Materials For DP Submission. *用作提交發展圖則之參考資料。

© Mott MacDonald Hong Kong Limited

This document should not be relied on or used in circumstances other than those for which it was originally prepared and for which Mott MacDonald Hong Kong Limited was commissioned. Mott MacDonald Limited accepts no responsibility for the document to any other party other than the person by whom it was commissioned.

INDICATIVE 只供參考

| Rev | Date | Drawn | Description | Ch'k'd | App'd |
|--------|------|-------|-------------|--------|-------|
| Client | | | | | |

WEST KOWLOON CULTURAL DISTRICT AUTHORITY



22/F Two Landmark East
100 How Ming Street
Kwun Tong, Kowloon
Hong Kong
T: +852 2828 5757
F: +852 2827 1828
W: www.mottmac.com.hk

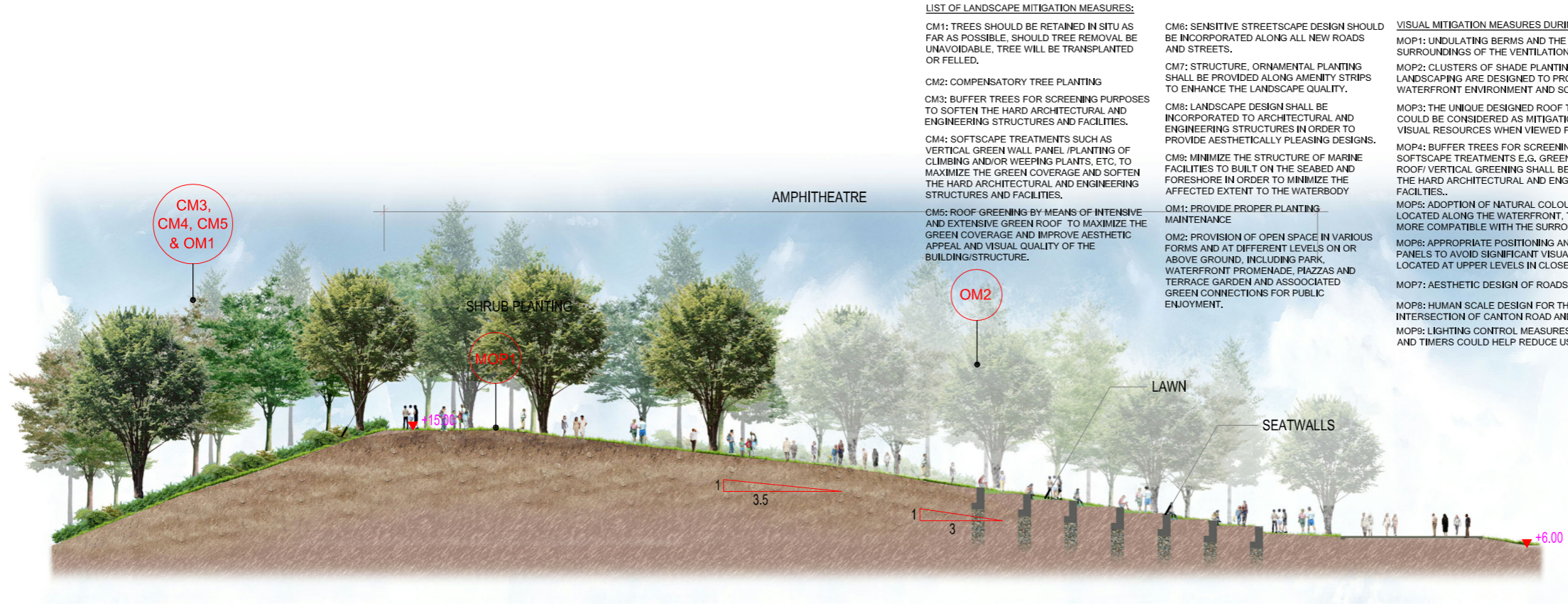


Project
PROJECT CONSULTANCY STUDY FOR WEST KOWLOON CULTURAL DISTRICT DEVELOPMENT PLAN

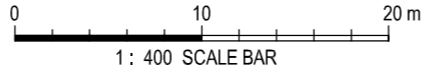
Title
LANDSCAPE CONCEPT PLAN FOR PARK

| | | | |
|-------------------|--------|--------------|--|
| Designed | | Eng check | |
| Drawn | | Coordination | |
| Dwg check | | Approved | |
| Scale at AS SHOWN | Status | Rev | |

Drawing Number
Figure 10.27b



SECTION 01 (PARK)
SCALE 1:400M @A3

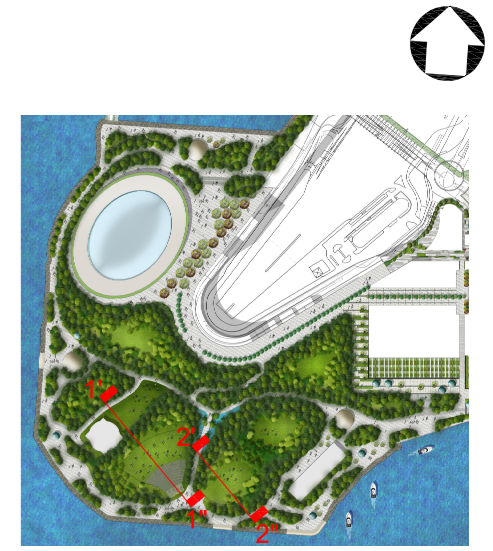


LIST OF LANDSCAPE MITIGATION MEASURES:

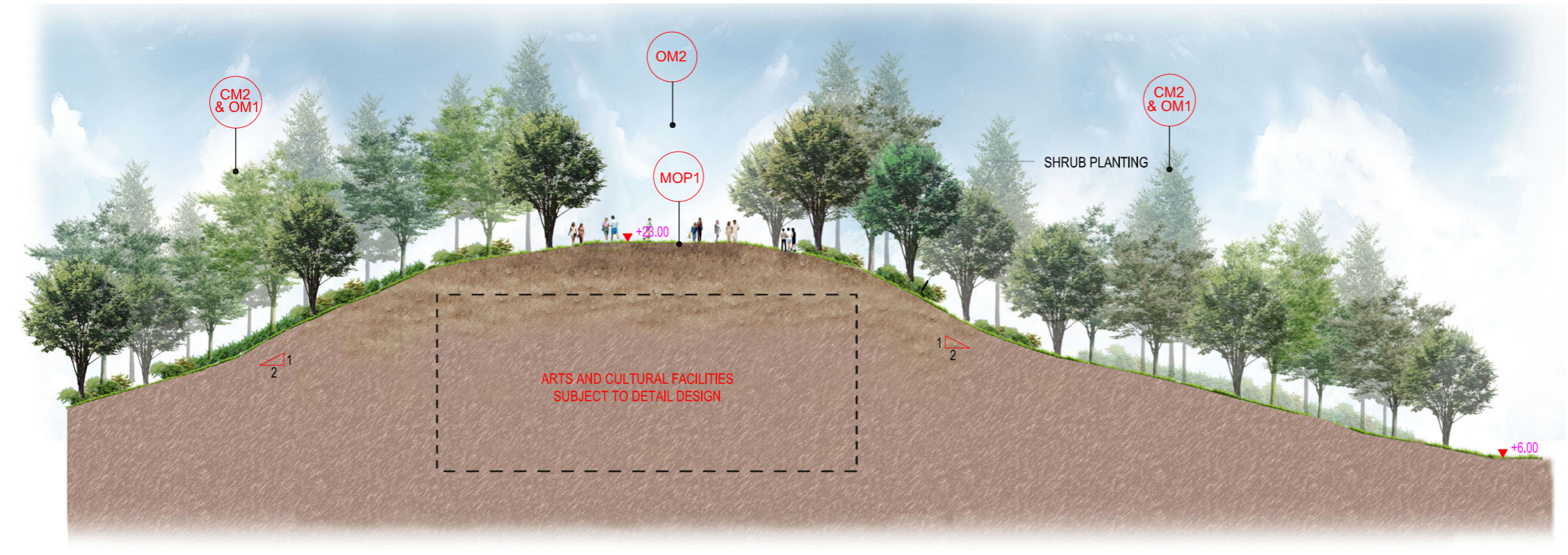
- CM1: TREES SHOULD BE RETAINED IN SITU AS FAR AS POSSIBLE. SHOULD TREE REMOVAL BE UNAVOIDABLE, TREE WILL BE TRANSPLANTED OR FELLED.
- CM2: COMPENSATORY TREE PLANTING
- CM3: BUFFER TREES FOR SCREENING PURPOSES TO SOFTEN THE HARD ARCHITECTURAL AND ENGINEERING STRUCTURES AND FACILITIES.
- CM4: SOFTSCAPE TREATMENTS SUCH AS VERTICAL GREEN WALL PANEL PLANTING OF CLIMBING AND/OR WEeping PLANTS, ETC. TO MAXIMIZE THE GREEN COVERAGE AND SOFTEN THE HARD ARCHITECTURAL AND ENGINEERING STRUCTURES AND FACILITIES.
- CM5: ROOF GREENING BY MEANS OF INTENSIVE AND EXTENSIVE GREEN ROOF TO MAXIMIZE THE GREEN COVERAGE AND IMPROVE AESTHETIC APPEAL AND VISUAL QUALITY OF THE BUILDING/STRUCTURE.
- CM6: SENSITIVE STREETSCAPE DESIGN SHOULD BE INCORPORATED ALONG ALL NEW ROADS AND STREETS.
- CM7: STRUCTURE, ORNAMENTAL PLANTING SHALL BE PROVIDED ALONG AMENITY STRIPS TO ENHANCE THE LANDSCAPE QUALITY.
- CM8: LANDSCAPE DESIGN SHALL BE INCORPORATED TO ARCHITECTURAL AND ENGINEERING STRUCTURES IN ORDER TO PROVIDE AESTHETICALLY PLEASING DESIGNS.
- CM9: MINIMIZE THE STRUCTURE OF MARINE FACILITIES TO BUILT ON THE SEABED AND FORESHORE IN ORDER TO MINIMIZE THE AFFECTED EXTENT TO THE WATERBODY
- OM1: PROVIDE PROPER PLANTING MAINTENANCE
- OM2: PROVISION OF OPEN SPACE IN VARIOUS FORMS AND AT DIFFERENT LEVELS ON OR ABOVE GROUND, INCLUDING PARK, WATERFRONT PROMENADE, PIAZZAS AND TERRACE GARDEN AND ASSOCIATED GREEN CONNECTIONS FOR PUBLIC ENJOYMENT.

VISUAL MITIGATION MEASURES DURING OPERATION PHASE:

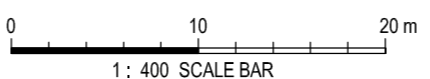
- MOP1: UNDULATING BERMS AND THE TREE PLANTED IN THE SURROUNDINGS OF THE VENTILATION BUILDINGS.
- MOP2: CLUSTERS OF SHADE PLANTING AND APPROPRIATE LANDSCAPING ARE DESIGNED TO PROVIDE A RELAXING WATERFRONT ENVIRONMENT AND SOFTEN THE WATER EDGE.
- MOP3: THE UNIQUE DESIGNED ROOF TOP GARDENS AND GREEN ROOF COULD BE CONSIDERED AS MITIGATION MEASURES TO LESSEN THE VISUAL RESOURCES WHEN VIEWED FROM THE VSRS AT HIGHER LEVELS.
- MOP4: BUFFER TREES FOR SCREENING PURPOSES OR OTHER SOFTSCAPE TREATMENTS E.G. GREEN WALL/ CLIMBERS/ GREEN ROOF/ VERTICAL GREENING SHALL BE INCORPORATED TO SOFTEN THE HARD ARCHITECTURAL AND ENGINEERING STRUCTURES AND FACILITIES..
- MOP5: ADOPTION OF NATURAL COLOUR TONES FOR WIND TURBINES LOCATED ALONG THE WATERFRONT, TO MAKE THEM VISUALLY MORE COMPATIBLE WITH THE SURROUNDINGS.
- MOP6: APPROPRIATE POSITIONING AND ANGLING OF THE SOLAR PANELS TO AVOID SIGNIFICANT VISUAL IMPACTS ON THE VSRS LOCATED AT UPPER LEVELS IN CLOSE PROXIMITY..
- MOP7: AESTHETIC DESIGN OF ROADS AND STREETSCAPES.
- MOP8: HUMAN SCALE DESIGN FOR THE WKT PLAZA AND THE INTERSECTION OF CANTON ROAD AND AUSTIN ROAD WEST.
- MOP9: LIGHTING CONTROL MEASURES SUCH AS THE USE OF SENSORS AND TIMERS COULD HELP REDUCE USAGE AFTER HOURS.



KEY PLAN 1:10,000M @A3



SECTION 02 (PARK)
SCALE 1:400M @A3



Remark: All Piers and Arts Pontoons should be subject to PHO and relevant Government Departments Agreement
備註: 所有碼頭及藝術浮橋有待<保護海港條例>及有關政府部門同意。
* Reference Materials For DP Submission. *用作提交發展圖則之參考資料。

© Mott MacDonald Hong Kong Limited
This document should not be relied on or used in circumstances other than those for which it was originally prepared and for which Mott MacDonald Hong Kong Limited was commissioned. Mott MacDonald Limited accepts no responsibility for this document to any other party other than the person by whom it was commissioned.

| Rev | Date | Drawn | Description | Ch'k'd | App'd |
|--------|------|-------|-------------|--------|-------|
| Client | | | | | |

WEST KOWLOON
CULTURAL DISTRICT AUTHORITY



Project
PROJECT CONSULTANCY STUDY FOR
WEST KOWLOON CULTURAL DISTRICT
DEVELOPMENT PLAN

Title
LANDSCAPE CONCEPT PLAN FOR
PARK
SECTION 01 AND SECTION 02

| | | | |
|-------------------|--------|--------------|--|
| Designed | | Eng check | |
| Drawn | | Coordination | |
| Dwg check | | Approved | |
| Scale at AS AHOWN | Status | Rev | |

Drawing Number
Figure 10.27c

INDICATIVE 只供參考



REFERENCE IMAGES



PERSPECTIVE - WATERFRONT PROMENADE (VIEW 1)

LIST OF GOOD DESIGN FEATURES:

GDF1: WITH WELL DESIGNED LOW TO MEDIUM-RISE BUILDINGS, THE PROPOSED WKCD DEVELOPMENT IS ANTICIPATED TO BE HIGHLY COMPATIBLE WITH THE SURROUNDINGS.

GDF2: THE BUILDINGS WITHIN THE WKCD ARE DESIGNED TO ALLOW VISUAL PERMEABILITY FROM THE WKT TO VICTORIA HARBOUR, WHICH IS ACHIEVED BY ALIGNMENT OF THE BUILDINGS ON THE WKCD.

GDF3: AN OPEN VISTA AND GREEN CORRIDOR FROM THE HERITAGE SITES CONSISTING OF THE DECLARED MONUMENTS OF ST. ANDREW'S CHURCH, FORMER KOWLOON BRITISH SCHOOL AND HONG KONG OBSERVATORY THROUGH KOWLOON PARK, AND ALONG WKCD WATERFRONT PROMENADE TOWARDS THE VICTORIA HARBOUR IS PRESERVED.

GDF4: THE OPEN SPACE WILL BE PROVIDED IN VARIOUS FORMS AT GRADE IN THE WKCD, INCLUDING PIAZZAS, A LANDSCAPED WATERFRONT PROMENADE AND VARIOUS GREEN SPACES.

GDF 5: UNIQUE TERRACE GARDENS IS CONSIDERED AS GOOD DESIGN FEATURE TO LESSEN THE VISUAL IMPACTS AND PROVIDE NEW VISUAL RESOURCES WHEN VIEWED FROM THE VSRS AT HIGHER LEVELS.

VISUAL MITIGATION MEASURES DURING OPERATION PHASE:

MOP1: UNDULATING BERMS AND THE TREE PLANTED IN THE SURROUNDINGS OF THE VENTILATION BUILDINGS.

MOP2: CLUSTERS OF SHADE PLANTING AND APPROPRIATE LANDSCAPING ARE DESIGNED TO PROVIDE A RELAXING WATERFRONT ENVIRONMENT AND SOFTEN THE WATER EDGE.

MOP3: THE UNIQUE DESIGNED ROOF TOP GARDENS AND GREEN ROOF COULD BE CONSIDERED AS MITIGATION MEASURES TO LESSEN THE VISUAL RESOURCES WHEN VIEWED FROM THE VSRS AT HIGHER LEVELS.

MOP4: BUFFER TREES FOR SCREENING PURPOSES OR OTHER SOFTSCAPE TREATMENTS E.G. GREEN WALL/ CLIMBERS/ GREEN ROOF/ VERTICAL GREENING SHALL BE INCORPORATED TO SOFTEN THE HARD ARCHITECTURAL AND ENGINEERING STRUCTURES AND FACILITIES.

MOP5: ADOPTION OF NATURAL COLOUR TONES FOR WIND TURBINES LOCATED ALONG THE WATERFRONT, TO MAKE THEM VISUALLY MORE COMPATIBLE WITH THE SURROUNDINGS.

MOP6: APPROPRIATE POSITIONING AND ANGLING OF THE SOLAR PANELS TO AVOID SIGNIFICANT VISUAL IMPACTS ON THE VSRS LOCATED AT UPPER LEVELS IN CLOSE PROXIMITY.

MOP7: AESTHETIC DESIGN OF ROADS AND STREETSCAPES.

MOP8: HUMAN SCALE DESIGN FOR THE WKT PLAZA AND THE INTERSECTION OF CANTON ROAD AND AUSTIN ROAD WEST.

MOP9: LIGHTING CONTROL MEASURES SUCH AS THE USE OF SENSORS AND TIMERS COULD HELP REDUCE USAGE AFTER HOURS.

LIST OF LANDSCAPE MITIGATION MEASURES:

CM1: TREES SHOULD BE RETAINED IN SITU AS FAR AS POSSIBLE, SHOULD TREE REMOVAL BE UNAVOIDABLE, TREE WILL BE TRANSPLANTED OR FELLED.

CM2: COMPENSATORY TREE PLANTING

CM3: BUFFER TREES FOR SCREENING PURPOSES TO SOFTEN THE HARD ARCHITECTURAL AND ENGINEERING STRUCTURES AND FACILITIES.

CM4: SOFTSCAPE TREATMENTS SUCH AS VERTICAL GREEN WALL PANEL /PLANTING OF CLIMBING AND/OR WEeping PLANTS, ETC. TO MAXIMIZE THE GREEN COVERAGE AND SOFTEN THE HARD ARCHITECTURAL AND ENGINEERING STRUCTURES AND FACILITIES.

CM5: ROOF GREENING BY MEANS OF INTENSIVE AND EXTENSIVE GREEN ROOF TO MAXIMIZE THE GREEN COVERAGE AND IMPROVE AESTHETIC APPEAL AND VISUAL QUALITY OF THE BUILDING/STRUCTURE.

CM6: SENSITIVE STREETSCAPE DESIGN SHOULD BE INCORPORATED ALONG ALL NEW ROADS AND STREETS.

CM7: STRUCTURE, ORNAMENTAL PLANTING SHALL BE PROVIDED ALONG AMENITY STRIPS TO ENHANCE THE LANDSCAPE QUALITY.

CM8: LANDSCAPE DESIGN SHALL BE INCORPORATED TO ARCHITECTURAL AND ENGINEERING STRUCTURES IN ORDER TO PROVIDE AESTHETICALLY PLEASING DESIGNS.

CM9: MINIMIZE THE STRUCTURE OF MARINE FACILITIES TO BUILT ON THE SEABED AND FORESHORE IN ORDER TO MINIMIZE THE AFFECTED EXTENT TO THE WATERBODY

OM1: PROVIDE PROPER PLANTING MAINTENANCE

OM2: PROVISION OF OPEN SPACE IN VARIOUS FORMS AND AT DIFFERENT LEVELS ON OR ABOVE GROUND, INCLUDING PARK, WATERFRONT PROMENADE, PIAZZAS AND TERRACE GARDEN AND ASSOCIATED GREEN CONNECTIONS FOR PUBLIC ENJOYMENT.



KEY PLAN

1:25,000M @A3

| Rev | Date | Drawn | Description | Ch'kd | App'd |
|--------|------|-------|-------------|-------|-------|
| Client | | | | | |

WEST KOWLOON CULTURAL DISTRICT AUTHORITY



20/F Two Landmark East
100 How Ming Street
Kowloon, Hong Kong
T: +852 2528 6767
F: +852 2827 1823
W: www.mottmac.com.hk

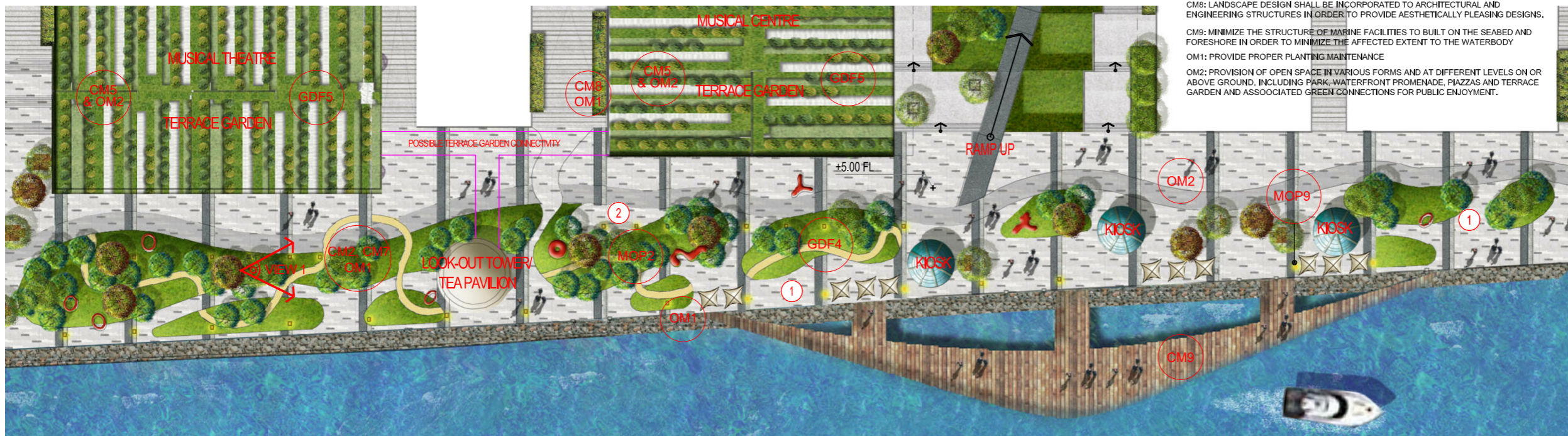


Project
PROJECT CONSULTANCY STUDY FOR WEST KOWLOON CULTURAL DISTRICT DEVELOPMENT PLAN

Title
LANDSCAPE CONCEPT FOR WATERFRONT PROMENADE

| | | | |
|-------------------|--------|--------------|--|
| Designed | | Eng check | |
| Drawn | | Coordination | |
| Dwg check | | Approved | |
| Scale at AS AHOWN | Status | Rev | |

Drawing Number
Figure 10.27d



WATERFRONT PROMENADE PLAN

SCALE 1:1000M @A3



1:1 000 SCALE BAR

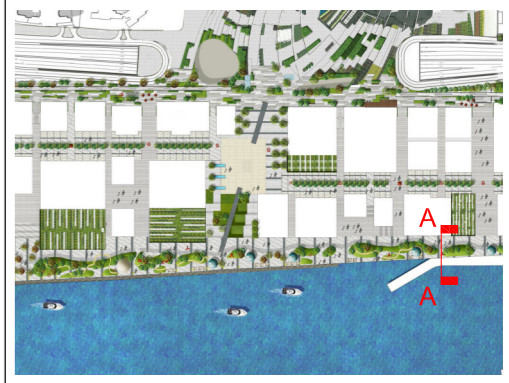
Remark: All Piers and Arts Pontoons should be subject to PHO and relevant Government Departments Agreement

備註: 所有碼頭及藝術浮橋有待<保護海港條例>及有關政府部門同意。
* Reference Materials For DP Submission. *用作提交發展圖則之參考資料。

© Mott MacDonald Hong Kong Limited

This document should not be relied on or used in circumstances other than those for which it was originally prepared and for which Mott MacDonald Hong Kong Limited was commissioned. Mott MacDonald Limited accepts no responsibility for this document to any other party other than the person by whom it was commissioned.

INDICATIVE 只供參考



KEY PLAN 1:8,000M @A3

LIST OF LANDSCAPE MITIGATION MEASURES:

- CM1: TREES SHOULD BE RETAINED IN SITU AS FAR AS POSSIBLE, SHOULD TREE REMOVAL BE UNAVOIDABLE, TREE WILL BE TRANSPLANTED OR FELLED.
- CM2: COMPENSATORY TREE PLANTING
- CM3: BUFFER TREES FOR SCREENING PURPOSES TO SOFTEN THE HARD ARCHITECTURAL AND ENGINEERING STRUCTURES AND FACILITIES.
- CM4: SOFTSCAPE TREATMENTS SUCH AS VERTICAL GREEN WALL PANEL /PLANTING OF CLIMBING AND/OR WEEPING PLANTS, ETC. TO MAXIMIZE THE GREEN COVERAGE AND SOFTEN THE HARD ARCHITECTURAL AND ENGINEERING STRUCTURES AND FACILITIES.

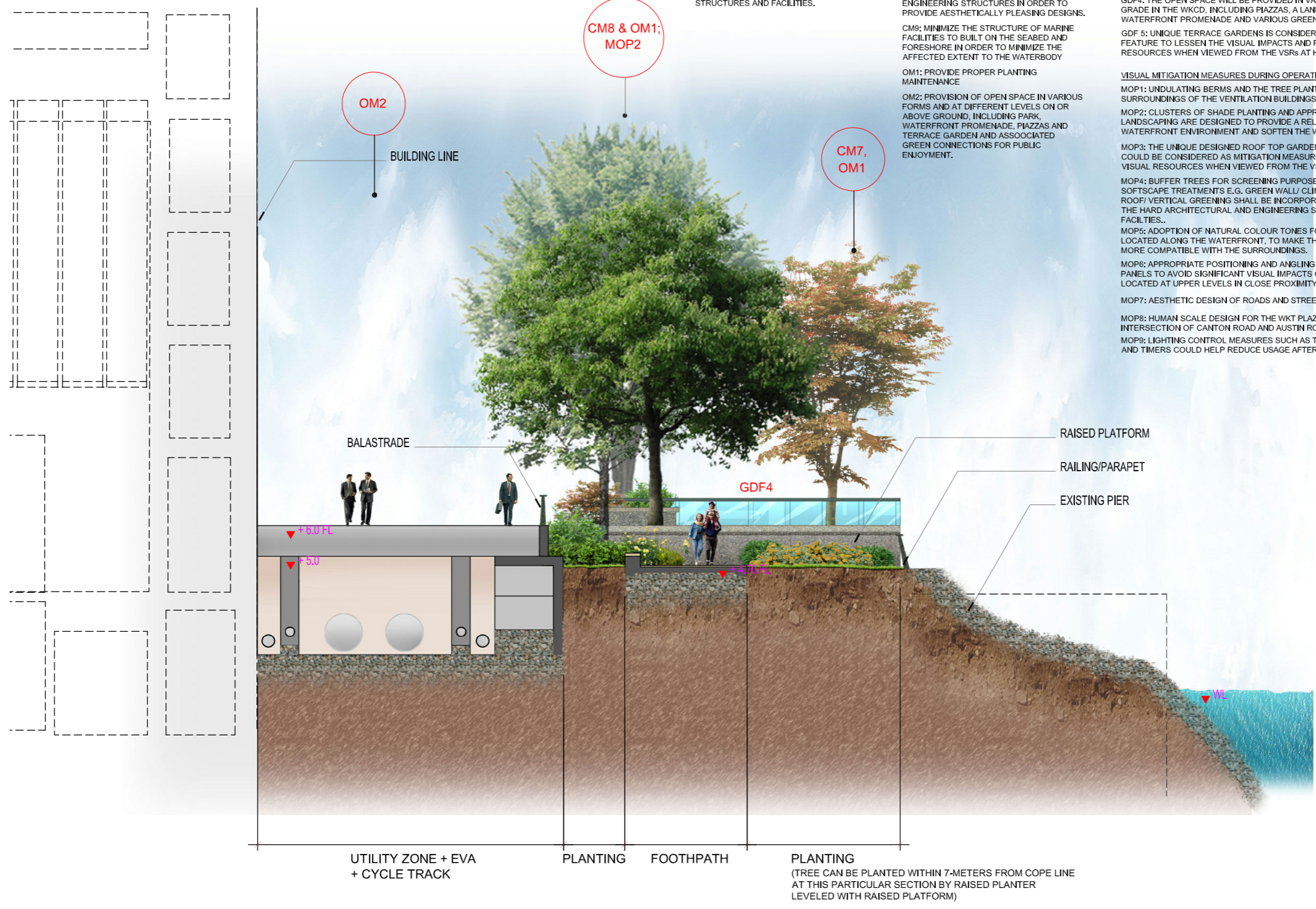
- CM5: ROOF GREENING BY MEANS OF INTENSIVE AND EXTENSIVE GREEN ROOF TO MAXIMIZE THE GREEN COVERAGE AND IMPROVE AESTHETIC APPEAL AND VISUAL QUALITY OF THE BUILDING/STRUCTURE.
- CM6: SENSITIVE STREETSCAPE DESIGN SHOULD BE INCORPORATED ALONG ALL NEW ROADS AND STREETS.
- CM7: STRUCTURE, ORNAMENTAL PLANTING SHALL BE PROVIDED ALONG AMENITY STRIPS TO ENHANCE THE LANDSCAPE QUALITY.
- CM8: LANDSCAPE DESIGN SHALL BE INCORPORATED TO ARCHITECTURAL AND ENGINEERING STRUCTURES IN ORDER TO PROVIDE AESTHETICALLY PLEASING DESIGNS.
- CM9: MINIMIZE THE STRUCTURE OF MARINE FACILITIES TO BUILT ON THE SEABED AND FORESHORE IN ORDER TO MINIMIZE THE AFFECTED EXTENT TO THE WATERBODY

LIST OF GOOD DESIGN FEATURES:

- GDF1: WITH WELL DESIGNED LOW TO MEDIUM-RISE BUILDINGS, THE PROPOSED WKCD DEVELOPMENT IS ANTICIPATED TO BE HIGHLY COMPATIBLE WITH THE SURROUNDINGS.
- GDF2: THE BUILDINGS WITHIN THE WKCD ARE DESIGNED TO ALLOW VISUAL PERMEABILITY FROM THE WKT TO VICTORIA HARBOUR, WHICH IS ACHIEVED BY ALIGNMENT OF THE BUILDINGS ON THE WKCD.
- GDF3: AN OPEN VISTA AND GREEN CORRIDOR FROM THE HERITAGE SITES CONSISTING OF THE DECLARED MONUMENTS OF ST. ANDREW'S CHURCH, FORMER KOWLOON BRITISH SCHOOL AND HONG KONG OBSERVATORY THROUGH KOWLOON PARK, AND ALONG WKCD WATERFRONT PROMENADE TOWARDS THE VICTORIA HARBOUR IS PRESERVED.
- GDF4: THE OPEN SPACE WILL BE PROVIDED IN VARIOUS FORMS AT GRADE IN THE WKCD, INCLUDING PLAZAS, A LANDSCAPED WATERFRONT PROMENADE AND VARIOUS GREEN SPACES.
- GDF 5: UNIQUE TERRACE GARDENS IS CONSIDERED AS GOOD DESIGN FEATURE TO LESSEN THE VISUAL IMPACTS AND PROVIDE NEW VISUAL RESOURCES WHEN VIEWED FROM THE VSRS AT HIGHER LEVELS.

VISUAL MITIGATION MEASURES DURING OPERATION PHASE :

- MOP1: UNDULATING BERMS AND THE TREE PLANTED IN THE SURROUNDINGS OF THE VENTILATION BUILDINGS.
- MOP2: CLUSTERS OF SHADE PLANTING AND APPROPRIATE LANDSCAPING ARE DESIGNED TO PROVIDE A RELAXING WATERFRONT ENVIRONMENT AND SOFTEN THE WATER EDGE.
- MOP3: THE UNIQUE DESIGNED ROOF TOP GARDENS AND GREEN ROOF COULD BE CONSIDERED AS MITIGATION MEASURES TO LESSEN THE VISUAL RESOURCES WHEN VIEWED FROM THE VSRS AT HIGHER LEVELS.
- MOP4: BUFFER TREES FOR SCREENING PURPOSES OR OTHER SOFTSCAPE TREATMENTS E.G. GREEN WALL/ CLIMBERS/ GREEN ROOF/ VERTICAL GREENING SHALL BE INCORPORATED TO SOFTEN THE HARD ARCHITECTURAL AND ENGINEERING STRUCTURES AND FACILITIES..
- MOP5: ADOPTION OF NATURAL COLOUR TONES FOR WIND TURBINES LOCATED ALONG THE WATERFRONT, TO MAKE THEM VISUALLY MORE COMPATIBLE WITH THE SURROUNDINGS.
- MOP6: APPROPRIATE POSITIONING AND ANGLING OF THE SOLAR PANELS TO AVOID SIGNIFICANT VISUAL IMPACTS ON THE VSRS LOCATED AT UPPER LEVELS IN CLOSE PROXIMITY..
- MOP7: AESTHETIC DESIGN OF ROADS AND STREETSCAPES.
- MOP8: HUMAN SCALE DESIGN FOR THE WKT PLAZA AND THE INTERSECTION OF CANTON ROAD AND AUSTIN ROAD WEST.
- MOP9: LIGHTING CONTROL MEASURES SUCH AS THE USE OF SENSORS AND TIMERS COULD HELP REDUCE USAGE AFTER HOURS.



UTILITY ZONE + EVA + CYCLE TRACK PLANTING FOOTHPATH PLANTING (TREE CAN BE PLANTED WITHIN 7-METERS FROM COPE LINE AT THIS PARTICULAR SECTION BY RAISED PLANTER LEVELED WITH RAISED SECTION PLATFORM)

SECTION A - A SCALE 1:150M @A3 0 1 2 3 4 5 1: 150 SCALE BAR

Remark: All Piers and Arts Pontoons should be subject to PHO and relevant Government Departments Agreement
備註: 所有碼頭及藝術浮橋有待<保護海港條例>及有關政府部門同意。
* Reference Materials For DP Submission. *用作提交發展圖則之參考資料。

© Mott MacDonald Hong Kong Limited
This document should not be relied on or used in circumstances other than those for which it was originally prepared and for which Mott MacDonald Hong Kong Limited was commissioned. Mott MacDonald Limited accepts no responsibility for this document to any other party other than the person by whom it was commissioned.

INDICATIVE 只供參考

| Rev | Date | Drawn | Description | Ch'k'd | App'd |
|--------|------|-------|-------------|--------|-------|
| Client | | | | | |

WEST KOWLOON CULTURAL DISTRICT AUTHORITY

20/F Two Landmark East
100 Hoi Ming Street
Kwun Tong, Kowloon
Hong Kong
T: +852 2828 5157
F: +852 2827 1823
W: www.mottmac.com.hk

Project
PROJECT CONSULTANCY STUDY FOR WEST KOWLOON CULTURAL DISTRICT DEVELOPMENT PLAN

Title
LANDSCAPE CONCEPT FOR WATERFRONT PROMENADE SECTION A - A

| | | | |
|-------------------|--------|--------------|--|
| Designed | | Eng check | |
| Drawn | | Coordination | |
| Dwg check | | Approved | |
| Scale at AS AHOWN | Status | Rev | |

Drawing Number
Figure 10.27e



REFERENCE IMAGES



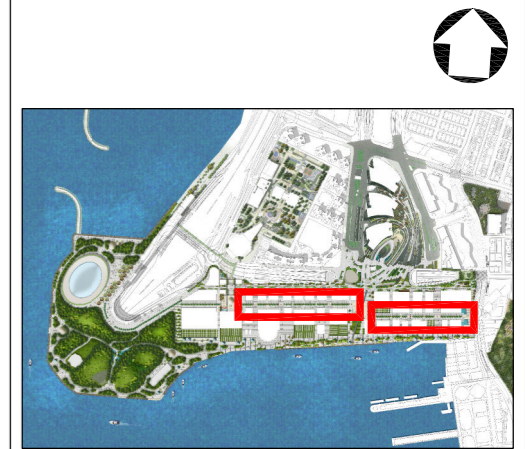
PERSPECTIVE -THE AVENUE

LIST OF LANDSCAPE MITIGATION MEASURES:

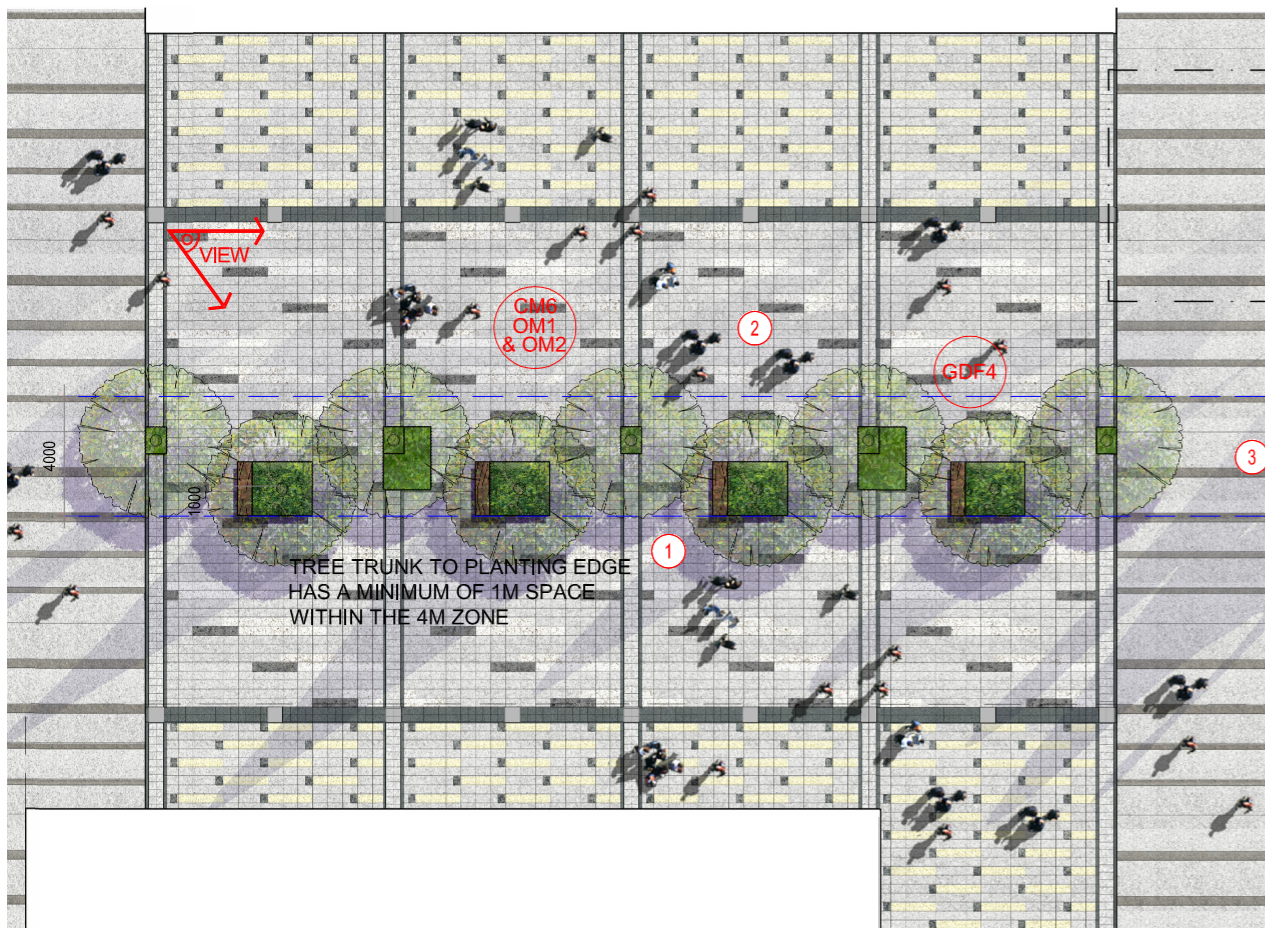
- CM1: TREES SHOULD BE RETAINED IN SITU AS FAR AS POSSIBLE. SHOULD TREE REMOVAL BE UNAVOIDABLE, TREE WILL BE TRANSPLANTED OR FELLED.
- CM2: COMPENSATORY TREE PLANTING
- CM3: BUFFER TREES FOR SCREENING PURPOSES TO SOFTEN THE HARD ARCHITECTURAL AND ENGINEERING STRUCTURES AND FACILITIES.
- CM4: SOFTSCAPE TREATMENTS SUCH AS VERTICAL GREEN WALL PANEL /PLANTING OF CLIMBING AND/OR WEEPING PLANTS, ETC. TO MAXIMIZE THE GREEN COVERAGE AND SOFTEN THE HARD ARCHITECTURAL AND ENGINEERING STRUCTURES AND FACILITIES.
- CM5: ROOF GREENING BY MEANS OF INTENSIVE AND EXTENSIVE GREEN ROOF TO MAXIMIZE THE GREEN COVERAGE AND IMPROVE AESTHETIC APPEAL AND VISUAL QUALITY OF THE BUILDING/STRUCTURE.
- CM6: SENSITIVE STREETSCAPE DESIGN SHOULD BE INCORPORATED ALONG ALL NEW ROADS AND STREETS.
- CM7: STRUCTURE, ORNAMENTAL PLANTING SHALL BE PROVIDED ALONG AMENITY STRIPS TO ENHANCE THE LANDSCAPE QUALITY.
- CM8: LANDSCAPE DESIGN SHALL BE INCORPORATED TO ARCHITECTURAL AND ENGINEERING STRUCTURES IN ORDER TO PROVIDE AESTHETICALLY PLEASING DESIGNS.
- CM9: MINIMIZE THE STRUCTURE OF MARINE FACILITIES TO BUILT ON THE SEABED AND FORESHORE IN ORDER TO MINIMIZE THE AFFECTED EXTENT TO THE WATERBODY
- OM1: PROVIDE PROPER PLANTING MAINTENANCE
- OM2: PROVISION OF OPEN SPACE IN VARIOUS FORMS AND AT DIFFERENT LEVELS ON OR ABOVE GROUND, INCLUDING PARK, WATERFRONT PROMENADE, PIAZZAS AND TERRACE GARDEN AND ASSOCIATED GREEN CONNECTIONS FOR PUBLIC ENJOYMENT.

LIST OF GOOD DESIGN FEATURES:

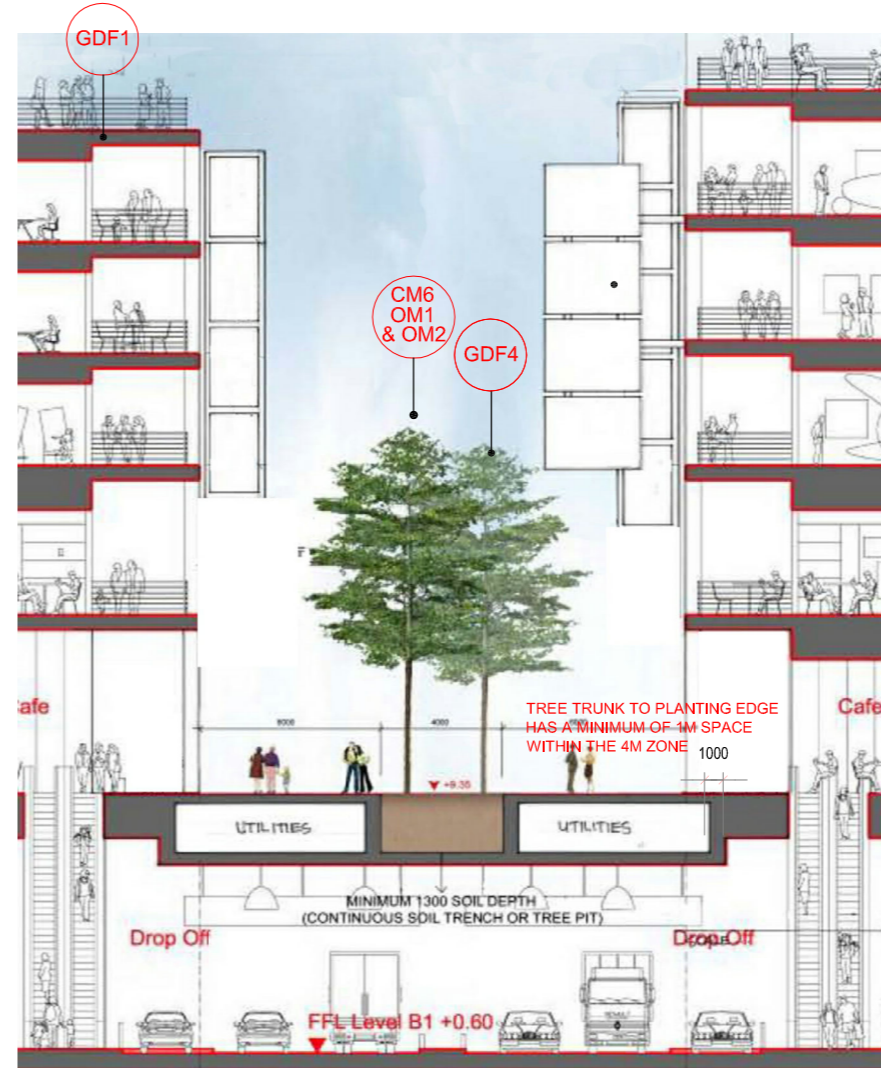
- GDF1: WITH WELL DESIGNED LOW TO MEDIUM-RISE BUILDINGS, THE PROPOSED WKCD DEVELOPMENT IS ANTICIPATED TO BE HIGHLY COMPATIBLE WITH THE SURROUNDINGS.
 - GDF2: THE BUILDINGS WITHIN THE WKCD ARE DESIGNED TO ALLOW VISUAL PERMEABILITY FROM THE WKT TO VICTORIA HARBOUR, WHICH IS ACHIEVED BY ALIGNMENT OF THE BUILDINGS ON THE WKCD.
 - GDF3: AN OPEN VISTA AND GREEN CORRIDOR FROM THE HERITAGE SITES CONSISTING OF THE DECLARED MONUMENTS OF ST. ANDREW'S CHURCH, FORMER KOWLOON BRITISH SCHOOL AND HONG KONG OBSERVATORY THROUGH KOWLOON PARK, AND ALONG WKCD WATERFRONT PROMENADE TOWARDS THE VICTORIA HARBOUR IS PRESERVED.
 - GDF4: THE OPEN SPACE WILL BE PROVIDED IN VARIOUS FORMS AT GRADE IN THE WKCD, INCLUDING PIAZZAS, A LANDSCAPED WATERFRONT PROMENADE AND VARIOUS GREEN SPACES.
 - GDF 5: UNIQUE TERRACE GARDENS IS CONSIDERED AS GOOD DESIGN FEATURE TO LESSEN THE VISUAL IMPACTS AND PROVIDE NEW VISUAL RESOURCES WHEN VIEWED FROM THE VSRS AT HIGHER LEVELS.
- VISUAL MITIGATION MEASURES DURING OPERATION PHASE :
- MOP1: UNDULATING BERMS AND THE TREE PLANTED IN THE SURROUNDINGS OF THE VENTILATION BUILDINGS.
 - MOP2: CLUSTERS OF SHADE PLANTING AND APPROPRIATE LANDSCAPING ARE DESIGNED TO PROVIDE A RELAXING WATERFRONT ENVIRONMENT AND SOFTEN THE WATER EDGE.
 - MOP3: THE UNIQUE DESIGNED ROOF TOP GARDENS AND GREEN ROOF COULD BE CONSIDERED AS MITIGATION MEASURES TO LESSEN THE VISUAL RESOURCES WHEN VIEWED FROM THE VSRS AT HIGHER LEVELS.
 - MOP4: BUFFER TREES FOR SCREENING PURPOSES OR OTHER SOFTSCAPE TREATMENTS E.G. GREEN WALL/ CLIMBERS/ GREEN ROOF/ VERTICAL GREENING SHALL BE INCORPORATED TO SOFTEN THE HARD ARCHITECTURAL AND ENGINEERING STRUCTURES AND FACILITIES..
 - MOP5: ADOPTION OF NATURAL COLOUR TONES FOR WIND TURBINES LOCATED ALONG THE WATERFRONT, TO MAKE THEM VISUALLY MORE COMPATIBLE WITH THE SURROUNDINGS.
 - MOP6: APPROPRIATE POSITIONING AND ANGLING OF THE SOLAR PANELS TO AVOID SIGNIFICANT VISUAL IMPACTS ON THE VSRS LOCATED AT UPPER LEVELS IN CLOSE PROXIMITY..
 - MOP7: AESTHETIC DESIGN OF ROADS AND STREETSCAPES.
 - MOP8: HUMAN SCALE DESIGN FOR THE WKT PLAZA AND THE INTERSECTION OF CANTON ROAD AND AUSTIN ROAD WEST.
 - MOP9: LIGHTING CONTROL MEASURES SUCH AS THE USE OF SENSORS AND TIMERS COULD HELP REDUCE USAGE AFTER HOURS.



KEY PLAN 1:25,000M @A3



PAVING MODULE PLAN (THE AVENUE)
SCALE 1:250 @A3



SECTION THROUGH AVENUE
SCALE 1:250 @A3

INDICATIVE 只供參考

| Rev | Date | Drawn | Description | Ch'kd | App'd |
|-----|------|-------|-------------|-------|-------|
| | | | | | |

Client
WEST KOWLOON CULTURAL DISTRICT AUTHORITY



20/F Two Landmark East
100 How Ming Street,
Kwun Tong, Kowloon
Hong Kong
T +852 2828 6767
F +852 2827 1823
www.mottmac.com.hk



Project
PROJECT CONSULTANCY STUDY FOR WEST KOWLOON CULTURAL DISTRICT DEVELOPMENT PLAN

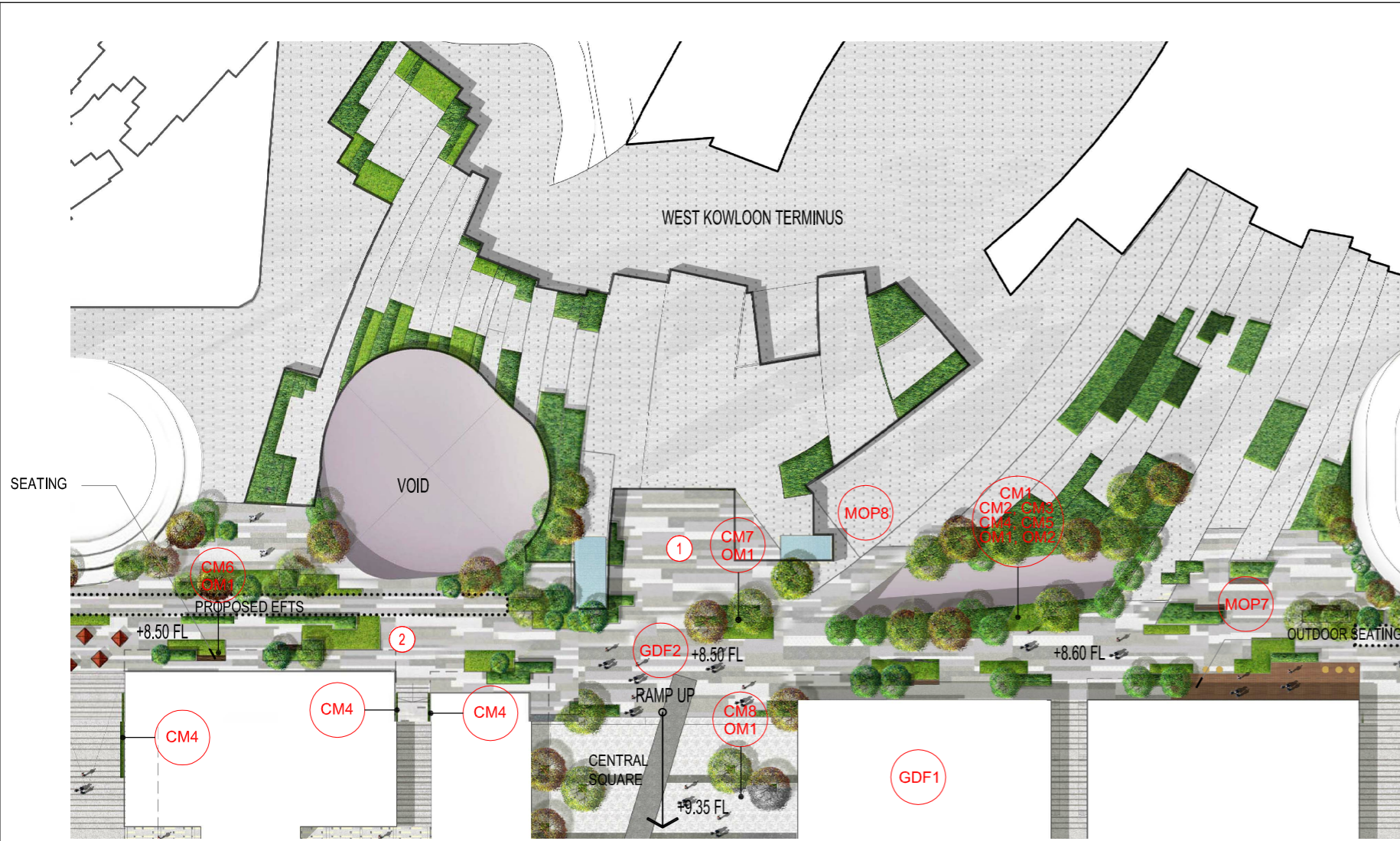
Title
LANDSCAPE CONCEPT FOR THE AVENUE

| | | | |
|--------------------|--------|--------------|--|
| Designed | | Eng check | |
| Drawn | | Coordination | |
| Dwg check | | Approved | |
| Scale at AS A/HOWN | Status | Rev | |

Drawing Number
Figure 10.27f

Remark: All Piers and Arts Pontoons should be subject to PHO and relevant Government Departments Agreement
備註: 所有碼頭及藝術浮橋有待<保護海港條例>及有關政府部門同意。
* Reference Materials For DP Submission. *用作提交發展圖則之參考資料。

© Mott MacDonald Hong Kong Limited
This document should not be relied on or used in circumstances other than those for which it was originally prepared and for which Mott MacDonald Hong Kong Limited was commissioned. Mott MacDonald Limited accepts no responsibility for this document to any other party other than the person by whom it was commissioned.



LANDSCAPE DECK CONNECTING WKT PLAN
SCALE 1:1500M @A3

LIST OF GOOD DESIGN FEATURES:

- GDF1: WITH WELL DESIGNED LOW TO MEDIUM-RISE BUILDINGS, THE PROPOSED WKCD DEVELOPMENT IS ANTICIPATED TO BE HIGHLY COMPATIBLE WITH THE SURROUNDINGS.
- GDF2: THE BUILDINGS WITHIN THE WKCD ARE DESIGNED TO ALLOW VISUAL PERMEABILITY FROM THE WKT TO VICTORIA HARBOUR, WHICH IS ACHIEVED BY ALIGNMENT OF THE BUILDINGS ON THE WKCD.
- GDF3: AN OPEN VISTA AND GREEN CORRIDOR FROM THE HERITAGE SITES CONSISTING OF THE DECLARED MONUMENTS OF ST. ANDREW'S CHURCH, FORMER KOWLOON BRITISH SCHOOL AND HONG KONG OBSERVATORY THROUGH KOWLOON PARK, AND ALONG WKCD WATERFRONT PROMENADE TOWARDS THE VICTORIA HARBOUR IS PRESERVED.
- GDF4: THE OPEN SPACE WILL BE PROVIDED IN VARIOUS FORMS AT GRADE IN THE WKCD, INCLUDING PIAZZAS, A LANDSCAPED WATERFRONT PROMENADE AND VARIOUS GREEN SPACES.
- GDF 5: UNIQUE TERRACE GARDENS IS CONSIDERED AS GOOD DESIGN FEATURE TO LESSEN THE VISUAL IMPACTS AND PROVIDE NEW VISUAL RESOURCES WHEN VIEWED FROM THE VSRs AT HIGHER LEVELS.

VISUAL MITIGATION MEASURES DURING OPERATION PHASE:

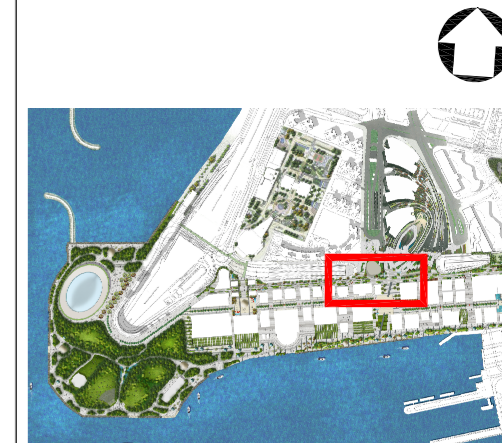
- MOP1: UNDULATING BERMS AND THE TREE PLANTED IN THE SURROUNDINGS OF THE VENTILATION BUILDINGS.
- MOP2: CLUSTERS OF SHADE PLANTING AND APPROPRIATE LANDSCAPING ARE DESIGNED TO PROVIDE A RELAXING WATERFRONT ENVIRONMENT AND SOFTEN THE WATER EDGE.
- MOP3: THE UNIQUE DESIGNED ROOF TOP GARDENS AND GREEN ROOF COULD BE CONSIDERED AS MITIGATION MEASURES TO LESSEN THE VISUAL RESOURCES WHEN VIEWED FROM THE VSRs AT HIGHER LEVELS.
- MOP4: BUFFER TREES FOR SCREENING PURPOSES OR OTHER SOFTSCAPE TREATMENTS E.G. GREEN WALL/ CLIMBERS/ GREEN ROOF/ VERTICAL GREENING SHALL BE INCORPORATED TO SOFTEN THE HARD ARCHITECTURAL AND ENGINEERING STRUCTURES AND FACILITIES..
- MOP5: ADOPTION OF NATURAL COLOUR TONES FOR WIND TURBINES LOCATED ALONG THE WATERFRONT, TO MAKE THEM VISUALLY MORE COMPATIBLE WITH THE SURROUNDINGS.
- MOP6: APPROPRIATE POSITIONING AND ANGLING OF THE SOLAR PANELS TO AVOID SIGNIFICANT VISUAL IMPACTS ON THE VSRs LOCATED AT UPPER LEVELS IN CLOSE PROXIMITY..
- MOP7: AESTHETIC DESIGN OF ROADS AND STREETSCAPES.
- MOP8: HUMAN SCALE DESIGN FOR THE WKT PLAZA AND THE INTERSECTION OF CANTON ROAD AND AUSTIN ROAD WEST.
- MOP9: LIGHTING CONTROL MEASURES SUCH AS THE USE OF SENSORS AND TIMERS COULD HELP REDUCE USAGE AFTER HOURS.

LIST OF LANDSCAPE MITIGATION MEASURES:

- CM1: TREES SHOULD BE RETAINED IN SITU AS FAR AS POSSIBLE. SHOULD TREE REMOVAL BE UNAVOIDABLE, TREE WILL BE TRANSPLANTED OR FELLED.
- CM2: COMPENSATORY TREE PLANTING
- CM3: BUFFER TREES FOR SCREENING PURPOSES TO SOFTEN THE HARD ARCHITECTURAL AND ENGINEERING STRUCTURES AND FACILITIES.
- CM4: SOFTSCAPE TREATMENTS SUCH AS VERTICAL GREEN WALL PANEL /PLANTING OF CLIMBING AND/OR WEEPING PLANTS, ETC. TO MAXIMIZE THE GREEN COVERAGE AND SOFTEN THE HARD ARCHITECTURAL AND ENGINEERING STRUCTURES AND FACILITIES.
- CM5: ROOF GREENING BY MEANS OF INTENSIVE AND EXTENSIVE GREEN ROOF TO MAXIMIZE THE GREEN COVERAGE AND IMPROVE AESTHETIC APPEAL AND VISUAL QUALITY OF THE BUILDING/STRUCTURE.
- CM6: SENSITIVE STREETSCAPE DESIGN SHOULD BE INCORPORATED ALONG ALL NEW ROADS AND STREETS.
- CM7: STRUCTURE, ORNAMENTAL PLANTING SHALL BE PROVIDED ALONG AMENITY STRIPS TO ENHANCE THE LANDSCAPE QUALITY.
- CM8: LANDSCAPE DESIGN SHALL BE INCORPORATED TO ARCHITECTURAL AND ENGINEERING STRUCTURES IN ORDER TO PROVIDE AESTHETICALLY PLEASING DESIGNS.
- CM9: MINIMIZE THE STRUCTURE OF MARINE FACILITIES TO BUILT ON THE SEABED AND FORESHORE IN ORDER TO MINIMIZE THE AFFECTED EXTENT TO THE WATERBODY
- OM1: PROVIDE PROPER PLANTING MAINTENANCE
- OM2: PROVISION OF OPEN SPACE IN VARIOUS FORMS AND AT DIFFERENT LEVELS ON OR ABOVE GROUND, INCLUDING PARK, WATERFRONT PROMENADE, PIAZZAS AND TERRACE GARDEN AND ASSOCIATED GREEN CONNECTIONS FOR PUBLIC ENJOYMENT.



REFERENCE IMAGES



KEYPLAN 1:25,000M @A3

| Rev | Date | Drawn | Description | Ch'k'd | App'd |
|-----|------|-------|-------------|--------|-------|
|-----|------|-------|-------------|--------|-------|

Client
WEST KOWLOON CULTURAL DISTRICT AUTHORITY



Project
PROJECT CONSULTANCY STUDY FOR WEST KOWLOON CULTURAL DISTRICT DEVELOPMENT PLAN

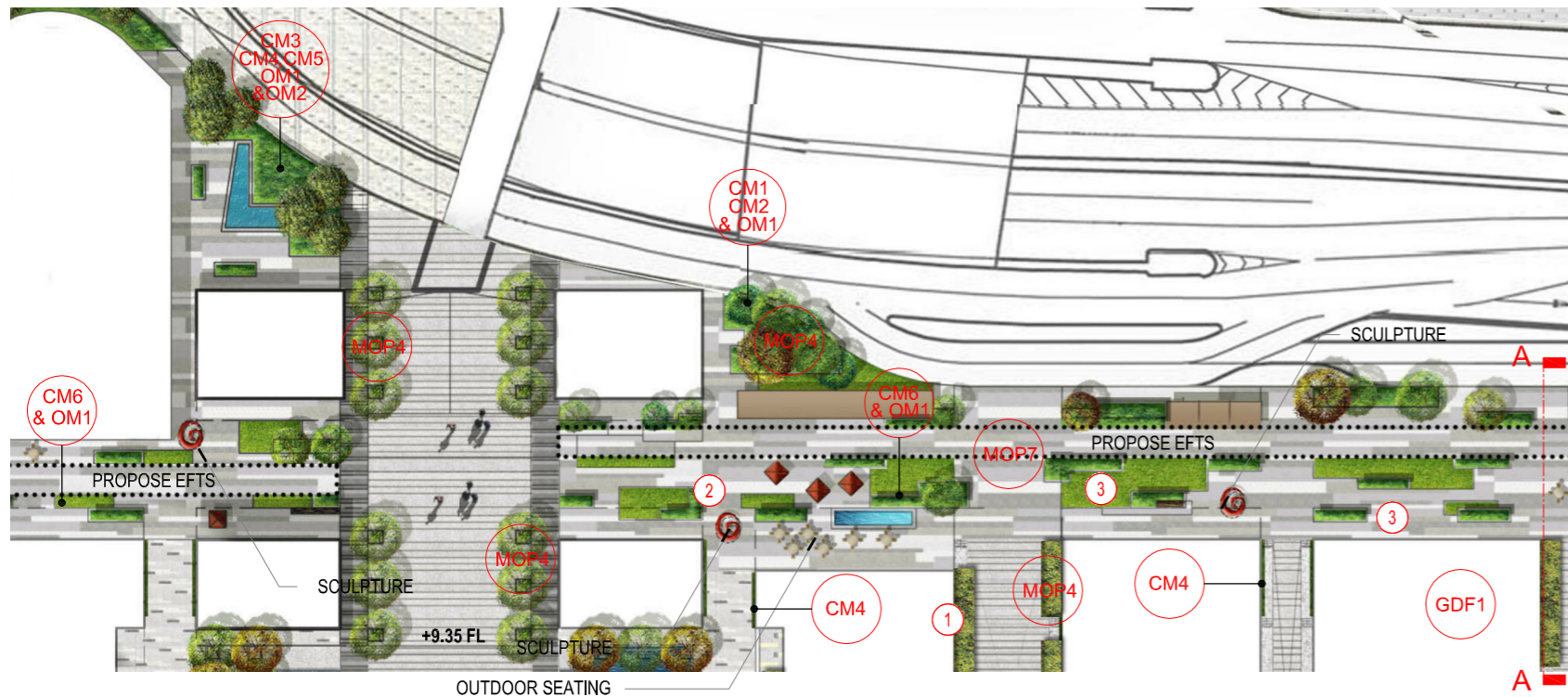
Title
LANDSCAPE CONCEPT FOR LANDSCAPE DECK CONNECTING WKT

| | | | |
|----------------------|--------|--------------|--|
| Designed | | Eng check | |
| Drawn | | Coordination | |
| Dwg check | | Approved | |
| Scale at A3 AS AHOWN | Status | Rev | |

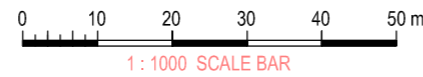
Drawing Number
Figure 10.27g

INDICATIVE 只供參考

Remark: All Piers and Arts Pontoons should be subject to PHO and relevant Government Departments Agreement
備註: 所有碼頭及藝術浮橋有待<保護海港條例>及有關政府部門同意。
* Reference Materials For DP Submission. *用作提交發展圖則之參考資料。
© Mott MacDonald Hong Kong Limited
This document should not be relied on or used in circumstances other than those for which it was originally prepared and for which Mott MacDonald Hong Kong Limited was commissioned. Mott MacDonald Limited accepts no responsibility for this document to any other party other than the person to whom it was commissioned.



AUSTIN ROAD WEST PLAN
SCALE 1:1000M @A3

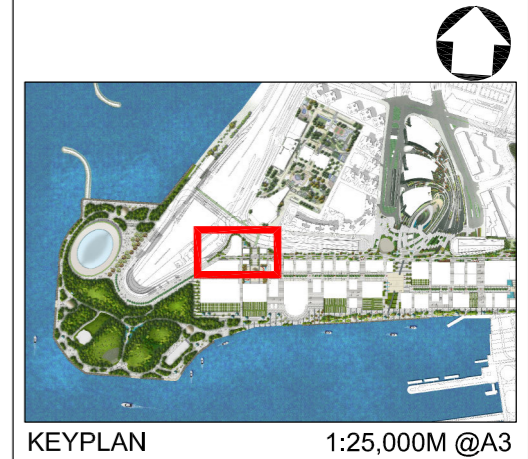


LIST OF LANDSCAPE MITIGATION MEASURES:

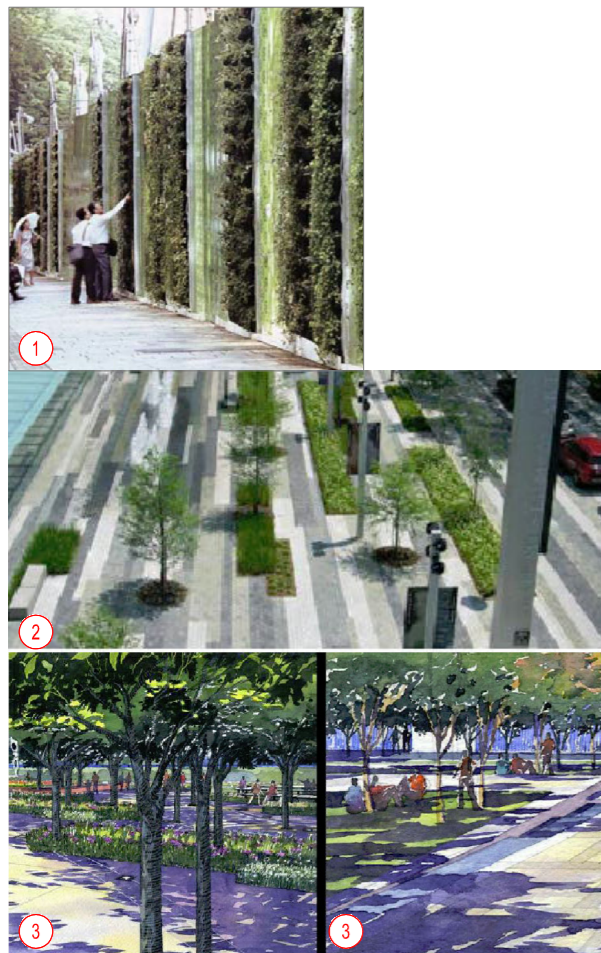
- CM1: TREES SHOULD BE RETAINED IN SITU AS FAR AS POSSIBLE, SHOULD TREE REMOVAL BE UNAVOIDABLE, TREE WILL BE TRANSPLANTED OR FELLED.
- CM2: COMPENSATORY TREE PLANTING
- CM3: BUFFER TREES FOR SCREENING PURPOSES TO SOFTEN THE HARD ARCHITECTURAL AND ENGINEERING STRUCTURES AND FACILITIES.
- CM4: SOFTSCAPE TREATMENTS SUCH AS VERTICAL GREEN WALL PANEL /PLANTING OF CLIMBING AND/OR WEEPING PLANTS, ETC. TO MAXIMIZE THE GREEN COVERAGE AND SOFTEN THE HARD ARCHITECTURAL AND ENGINEERING STRUCTURES AND FACILITIES.
- CM5: ROOF GREENING BY MEANS OF INTENSIVE AND EXTENSIVE GREEN ROOF TO MAXIMIZE THE GREEN COVERAGE AND IMPROVE AESTHETIC APPEAL AND VISUAL QUALITY OF THE BUILDING/STRUCTURE.
- CM6: SENSITIVE STREETSCAPE DESIGN SHOULD BE INCORPORATED ALONG ALL NEW ROADS AND STREETS.
- CM7: STRUCTURE, ORNAMENTAL PLANTING SHALL BE PROVIDED ALONG AMENITY STRIPS TO ENHANCE THE LANDSCAPE QUALITY.
- CM8: LANDSCAPE DESIGN SHALL BE INCORPORATED TO ARCHITECTURAL AND ENGINEERING STRUCTURES IN ORDER TO PROVIDE AESTHETICALLY PLEASING DESIGNS.
- CM9: MINIMIZE THE STRUCTURE OF MARINE FACILITIES TO BUILT ON THE SEABED AND FORESHORE IN ORDER TO MINIMIZE THE AFFECTED EXTENT TO THE WATERBODY
- OM1: PROVIDE PROPER PLANTING MAINTENANCE
- OM2: PROVISION OF OPEN SPACE IN VARIOUS FORMS AND AT DIFFERENT LEVELS ON OR ABOVE GROUND, INCLUDING PARK, WATERFRONT PROMENADE, PIAZZAS AND TERRACE GARDEN AND ASSOCIATED GREEN CONNECTIONS FOR PUBLIC ENJOYMENT.

LIST OF GOOD DESIGN FEATURES:

- GDF1: WITH WELL DESIGNED LOW TO MEDIUM-RISE BUILDINGS, THE PROPOSED WKCD DEVELOPMENT IS ANTICIPATED TO BE HIGHLY COMPATIBLE WITH THE SURROUNDINGS.
 - GDF2: THE BUILDINGS WITHIN THE WKCD ARE DESIGNED TO ALLOW VISUAL PERMEABILITY FROM THE WKT TO VICTORIA HARBOUR, WHICH IS ACHIEVED BY ALIGNMENT OF THE BUILDINGS ON THE WKCD.
 - GDF3: AN OPEN VISTA AND GREEN CORRIDOR FROM THE HERITAGE SITES CONSISTING OF THE DECLARED MONUMENTS OF ST. ANDREW'S CHURCH, FORMER KOWLOON BRITISH SCHOOL AND HONG KONG OBSERVATORY THROUGH KOWLOON PARK, AND ALONG WKCD WATERFRONT PROMENADE TOWARDS THE VICTORIA HARBOUR IS PRESERVED.
 - GDF4: THE OPEN SPACE WILL BE PROVIDED IN VARIOUS FORMS AT GRADE IN THE WKCD, INCLUDING PIAZZAS, A LANDSCAPED WATERFRONT PROMENADE AND VARIOUS GREEN SPACES.
 - GDF 5: UNIQUE TERRACE GARDENS IS CONSIDERED AS GOOD DESIGN FEATURE TO LESSEN THE VISUAL IMPACTS AND PROVIDE NEW VISUAL RESOURCES WHEN VIEWED FROM THE VSRs AT HIGHER LEVELS.
- VISUAL MITIGATION MEASURES DURING OPERATION PHASE:**
- MOP1: UNDULATING BERMS AND THE TREE PLANTED IN THE SURROUNDINGS OF THE VENTILATION BUILDINGS.
 - MOP2: CLUSTERS OF SHADE PLANTING AND APPROPRIATE LANDSCAPING ARE DESIGNED TO PROVIDE A RELAXING WATERFRONT ENVIRONMENT AND SOFTEN THE WATER EDGE.
 - MOP3: THE UNIQUE DESIGNED ROOF TOP GARDENS AND GREEN ROOF COULD BE CONSIDERED AS MITIGATION MEASURES TO LESSEN THE VISUAL RESOURCES WHEN VIEWED FROM THE VSRs AT HIGHER LEVELS.
 - MOP4: BUFFER TREES FOR SCREENING PURPOSES OR OTHER SOFTSCAPE TREATMENTS E.G. GREEN WALL/ CLIMBERS/ GREEN ROOF/ VERTICAL GREENING SHALL BE INCORPORATED TO SOFTEN THE HARD ARCHITECTURAL AND ENGINEERING STRUCTURES AND FACILITIES.
 - MOP5: ADOPTION OF NATURAL COLOUR TONES FOR WIND TURBINES LOCATED ALONG THE WATERFRONT, TO MAKE THEM VISUALLY MORE COMPATIBLE WITH THE SURROUNDINGS.
 - MOP6: APPROPRIATE POSITIONING AND ANGLING OF THE SOLAR PANELS TO AVOID SIGNIFICANT VISUAL IMPACTS ON THE VSRs LOCATED AT UPPER LEVELS IN CLOSE PROXIMITY.
 - MOP7: AESTHETIC DESIGN OF ROADS AND STREETSCAPES.
 - MOP8: HUMAN SCALE DESIGN FOR THE WKT PLAZA AND THE INTERSECTION OF CANTON ROAD AND AUSTIN ROAD WEST.
 - MOP9: LIGHTING CONTROL MEASURES SUCH AS THE USE OF SENSORS AND TIMERS COULD HELP REDUCE USAGE AFTER HOURS.



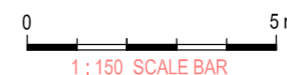
KEYPLAN 1:25,000M @A3



REFERENCE IMAGES



SECTION A - A (AUSTIN ROAD WEST)
SCALE 1:150M @A3



Remark: All Piers and Arts Pontoons should be subject to PHO and relevant Government Departments Agreement
備註: 所有碼頭及藝術浮橋有待<保護海港條例>及有關政府部門同意。
* Reference Materials For DP Submission. *用作提交發展圖則之參考資料。

© Mott MacDonald Hong Kong Limited
This document should not be relied on or used in circumstances other than those for which it was originally prepared and for which Mott MacDonald Hong Kong Limited was commissioned. Mott MacDonald Limited accepts no responsibility for this document to any other party other than the person to whom it was commissioned.

INDICATIVE 只供參考

| Rev | Date | Drawn | Description | Ch'kd | App'd |
|--------|------|-------|-------------|-------|-------|
| Client | | | | | |

WEST KOWLOON CULTURAL DISTRICT AUTHORITY



20/F Two Landmark East
100 Hoi Ming Street,
Kowloon, Kowloon
Hong Kong
T: +852 2828 6767
F: +852 2821 1623
W: www.mottmac.com.hk



Project
PROJECT CONSULTANCY STUDY FOR WEST KOWLOON CULTURAL DISTRICT DEVELOPMENT PLAN

Title
LANDSCAPE CONCEPT FOR AUSTIN ROAD WEST SECTION A - A

| | | | |
|-------------------|--------|--------------|--|
| Designed | | Eng check | |
| Drawn | | Coordination | |
| Dwg check | | Approved | |
| Scale at AS SHOWN | Status | Rev | |

Drawing Number
Figure 10.27h