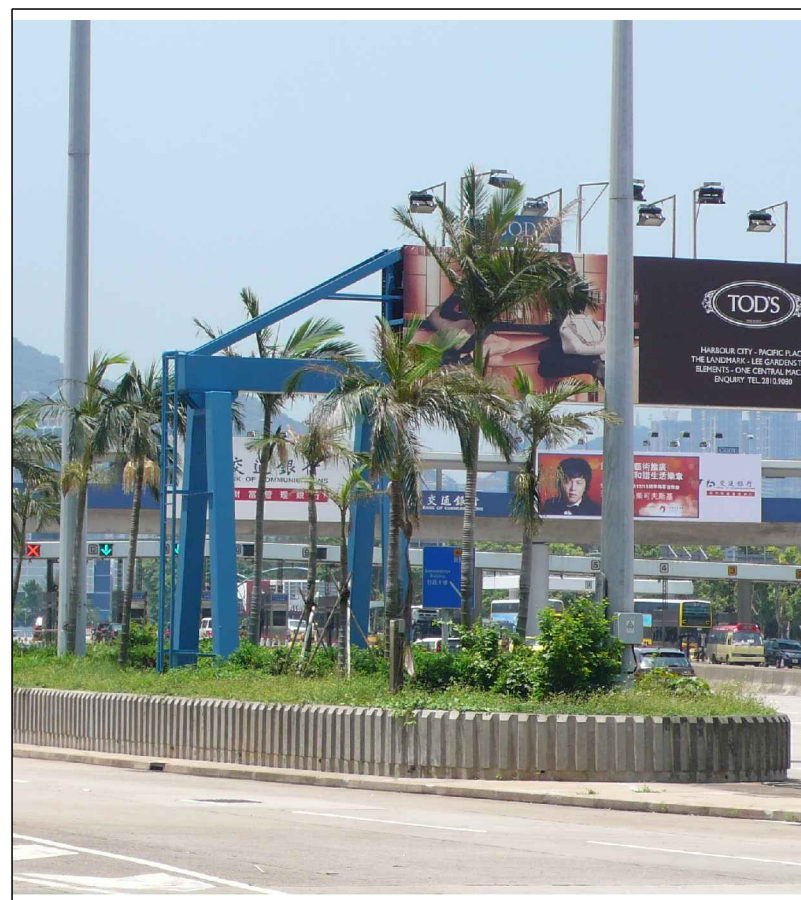




LR2.28 Roadside Plantation along Western Harbour Crossing Bus Stop near Element Photo 1



LR2.28 Roadside Plantation along Western Harbour Crossing Bus Stop near Element Photo 2



LR2.28 Roadside Plantation along Western Harbour Crossing Bus Stop near Element Photo 3



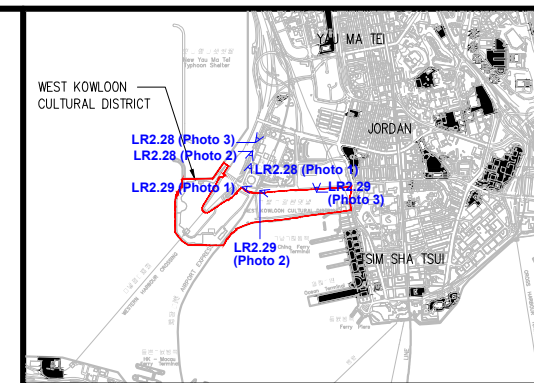
LR2.29 Roadside Plantation along Austin Road West Photo 1



LR2.29 Roadside Plantation along Austin Road West Photo 2



LR2.29 Roadside Plantation along Austin Road West Photo 3



KEY PLAN

Rev	Date	Drawn	Description	Ó@ç [ç] ç

Client
WEST KOWLOON CULTURAL DISTRICT AUTHORITY

Mott MacDonald
20/F Two Landmark East
100 How Ming Street
Kowloon, Kowloon
Hong Kong
T: +852 2888 3337
F: +852 2888 1888
W: www.mottmac.com.hk

ARTEC **IMG Artists** **Lord**
TFP | FARRELLS **G | H | K**
creative thinking positive solutions **workforce limited** **MVA**
DONNELL
LD ASIA **BMT**

Project
PROJECT CONSULTANCY STUDY FOR WEST KOWLOON CULTURAL DISTRICT DEVELOPMENT PLAN

Title
BASELINE LANDSCAPE RESOURCES PHOTO RECORD (SHEET 15 OF 20)

Designed	Eng check	
Drawn	Coordination	
Dwg check	Approved	
Scale at A3 NTS	Status	Rev

Drawing Number
Figure 10.20

© Mott MacDonald Hong Kong Limited
This document should not be relied on or used in circumstances other than those for which it was originally prepared and for which Mott MacDonald Hong Kong Limited was commissioned. Mott MacDonald Limited accepts no responsibility for this document to any other party other than the person by whom it was commissioned.