

KEY PLAN

- PROPOSED PLAZZA AREAS 廣場
- WATER FEATURE 水景
- TREE 樹木
- SHRUB 灌木
- LAWN/GROUND COVER 草地/地被
- HARD PAVING AREA 鋪裝
- SCHEDULE 2 DESIGNATED PROJECT - UNDERPASS ROAD
- SCHEDULE 3 DESIGNATED PROJECT BOUNDARY

Rev	Date	Drawn	Description	Ch'kd	App'd

Client
WEST KOWLOON CULTURAL DISTRICT AUTHORITY

Project
PROJECT CONSULTANCY STUDY FOR WEST KOWLOON CULTURAL DISTRICT DEVELOPMENT PLAN

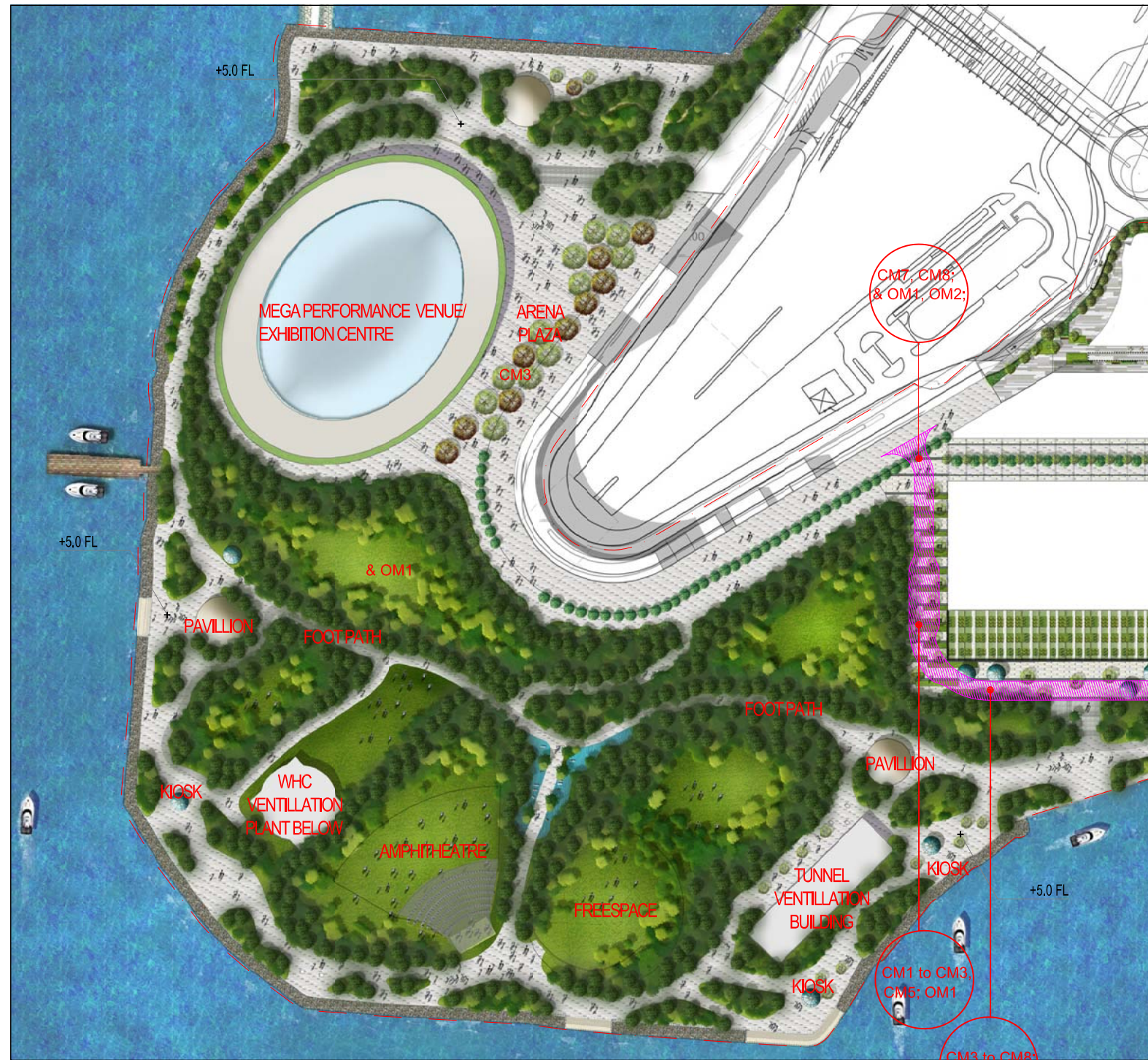
Title
PROPOSED LANDSCAPE CONCEPT PLAN

Designed		Eng check	
Drawn		Coordination	
Dwg check		Approved	
Scale at A3 NTS	Status	Rev	

Drawing Number
Figure 14.10.15

Remark: All Piers and Arts Pontoons should be subject to PHO and relevant Government Departments Agreement
備註: 所有碼頭及藝術浮橋有待<保護海港條例>及有關政府部門同意。
* Reference Materials For DP Submission. * 用作提交發展圖則之參考資料。

© Mott MacDonald Hong Kong Limited
This document should not be relied on or used in circumstances other than those for which it was originally prepared and for which Mott MacDonald Hong Kong Limited was commissioned. Mott MacDonald Limited accepts no responsibility for this document to any other party other than the person by whom it was commissioned.

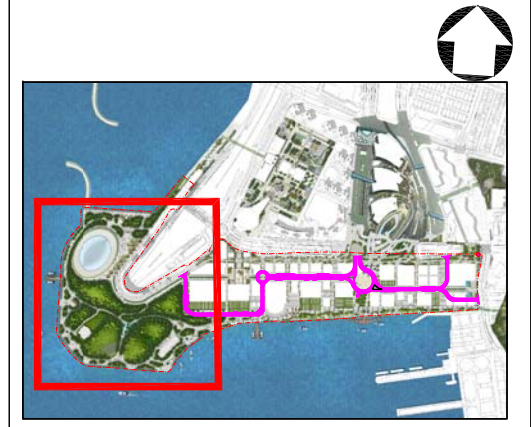


PARK PLAN
SCALE 1:3000M @A3



LIST OF LANDSCAPE MITIGATION MEASURES:

- CM1: TREES SHOULD BE RETAINED IN SITU AS FAR AS POSSIBLE. SHOULD TREE REMOVAL BE UNAVOIDABLE, TREE WILL BE TRANSPLANTED OR FELLED.
- CM2: COMPENSATORY TREE PLANTING
- CM3: BUFFER TREES FOR SCREENING PURPOSES TO SOFTEN THE HARD ARCHITECTURAL AND ENGINEERING STRUCTURES AND FACILITIES.
- CM4: SOFTSCAPE TREATMENTS SUCH AS VERTICAL GREEN WALL PANEL /PLANTING OF CLIMBING AND/OR WEEPING PLANTS, ETC. TO MAXIMIZE THE GREEN COVERAGE AND SOFTEN THE HARD ARCHITECTURAL AND ENGINEERING STRUCTURES AND FACILITIES.
- CM5: ROOF GREENING BY MEANS OF INTENSIVE AND EXTENSIVE GREEN ROOF TO MAXIMIZE THE GREEN COVERAGE AND IMPROVE AESTHETIC APPEAL AND VISUAL QUALITY OF THE BUILDING/STRUCTURE.
- CM6: SENSITIVE STREETSCAPE DESIGN SHOULD BE INCORPORATED ALONG ALL NEW ROADS AND STREETS.
- CM7: STRUCTURE, ORNAMENTAL PLANTING SHALL BE PROVIDED ALONG AMENITY STRIPS TO ENHANCE THE LANDSCAPE QUALITY.
- CM8: LANDSCAPE DESIGN SHALL BE INCORPORATED TO ARCHITECTURAL AND ENGINEERING STRUCTURES IN ORDER TO PROVIDE AESTHETICALLY PLEASING DESIGNS.
- OM1: PROVIDE PROPER PLANTING MAINTENANCE
- OM2: PROVISION OF OPEN SPACE IN VARIOUS FORMS AND AT DIFFERENT LEVELS ON OR ABOVE GROUND, INCLUDING PARK, WATERFRONT PROMENADE, PLAZAS AND TERRACE GARDEN AND ASSOCIATED GREEN CONNECTIONS FOR PUBLIC ENJOYMENT.



KEY PLAN 1:25,000M @A3

LEGEND

- SCHEDULE 2 DESIGNATED PROJECT - UNDERPASS ROAD
- SCHEDULE 3 DESIGNATED PROJECT BOUNDARY

Rev	Date	Drawn	Description	Ch'k'd	App'd
-----	------	-------	-------------	--------	-------

Client
WEST KOWLOON CULTURAL DISTRICT AUTHORITY

20/F Two Landmark East
100 How Ming Street
Kwun Tong, Kowloon
Hong Kong
T +852 2878 5757
F +852 2877 1823
W www.mottmac.com.hk

Project
PROJECT CONSULTANCY STUDY FOR WEST KOWLOON CULTURAL DISTRICT DEVELOPMENT PLAN

Title
LANDSCAPE CONCEPT PLAN FOR PARK

Designed		Eng check	
Drawn		Coordination	
Dwg check		Approved	
Scale at AS SHOWN	Status	Rev	

Drawing Number
Figure 14.10.16

Remark: All Piers and Arts Pontoons should be subject to PHO and relevant Government Departments Agreement
備註: 所有碼頭及藝術浮橋有待<保護海港條例>及有關政府部門同意。
* Reference Materials For DP Submission. *用作提交發展圖則之參考資料。

© Mott MacDonald Hong Kong Limited
This document should not be relied on or used in circumstances other than those for which it was originally prepared and for which Mott MacDonald Hong Kong Limited was commissioned. Mott MacDonald Limited accepts no responsibility for this document to any other party other than the person to whom it was commissioned.

INDICATIVE 只供參考

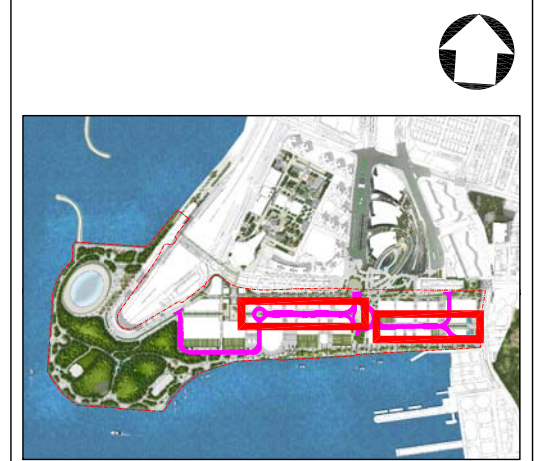


REFERENCE IMAGES



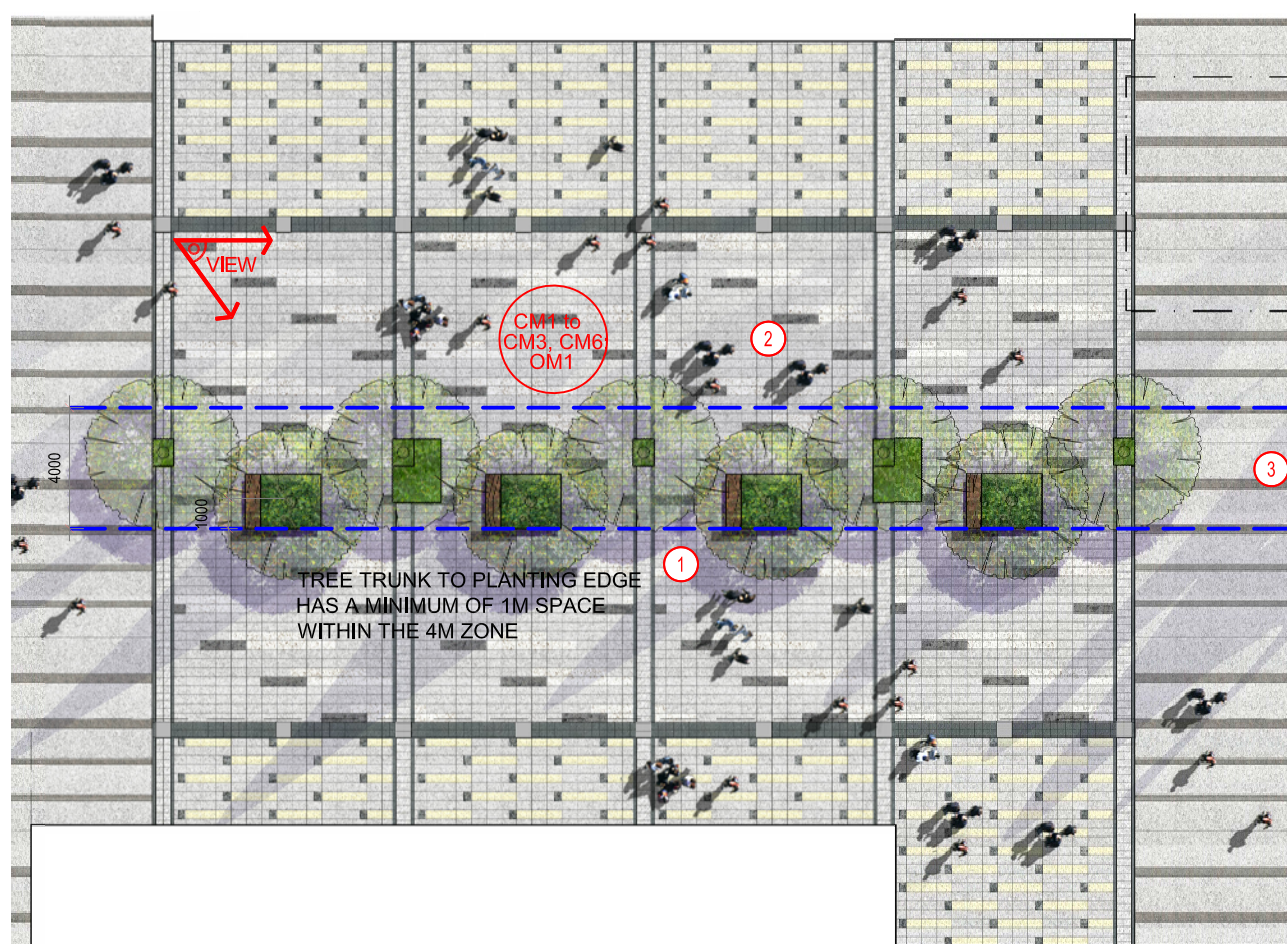
PERSPECTIVE -THE AVENUE

- LIST OF LANDSCAPE MITIGATION MEASURES:**
- CM1: TREES SHOULD BE RETAINED IN SITU AS FAR AS POSSIBLE, SHOULD TREE REMOVAL BE UNAVOIDABLE, TREE WILL BE TRANSPLANTED OR FELLED.
 - CM2: COMPENSATORY TREE PLANTING
 - CM3: BUFFER TREES FOR SCREENING PURPOSES TO SOFTEN THE HARD ARCHITECTURAL AND ENGINEERING STRUCTURES AND FACILITIES.
 - CM4: SOFTSCAPE TREATMENTS SUCH AS VERTICAL GREEN WALL PANEL /PLANTING OF CLIMBING AND/OR WEEPING PLANTS, ETC. TO MAXIMIZE THE GREEN COVERAGE AND SOFTEN THE HARD ARCHITECTURAL AND ENGINEERING STRUCTURES AND FACILITIES.
 - CM5: ROOF GREENING BY MEANS OF INTENSIVE AND EXTENSIVE GREEN ROOF TO MAXIMIZE THE GREEN COVERAGE AND IMPROVE AESTHETIC APPEAL AND VISUAL QUALITY OF THE BUILDING/STRUCTURE.
 - CM6: SENSITIVE STREETSCAPE DESIGN SHOULD BE INCORPORATED ALONG ALL NEW ROADS AND STREETS.
 - CM7: STRUCTURE, ORNAMENTAL PLANTING SHALL BE PROVIDED ALONG AMENITY STRIPS TO ENHANCE THE LANDSCAPE QUALITY.
 - CM8: LANDSCAPE DESIGN SHALL BE INCORPORATED TO ARCHITECTURAL AND ENGINEERING STRUCTURES IN ORDER TO PROVIDE AESTHETICALLY PLEASING DESIGNS.
 - OM1: PROVIDE PROPER PLANTING MAINTENANCE
 - OM2: PROVISION OF OPEN SPACE IN VARIOUS FORMS AND AT DIFFERENT LEVELS ON OR ABOVE GROUND, INCLUDING PARK, WATERFRONT PROMENADE, PIAZZAS AND TERRACE GARDEN AND ASSOCIATED GREEN CONNECTIONS FOR PUBLIC ENJOYMENT.

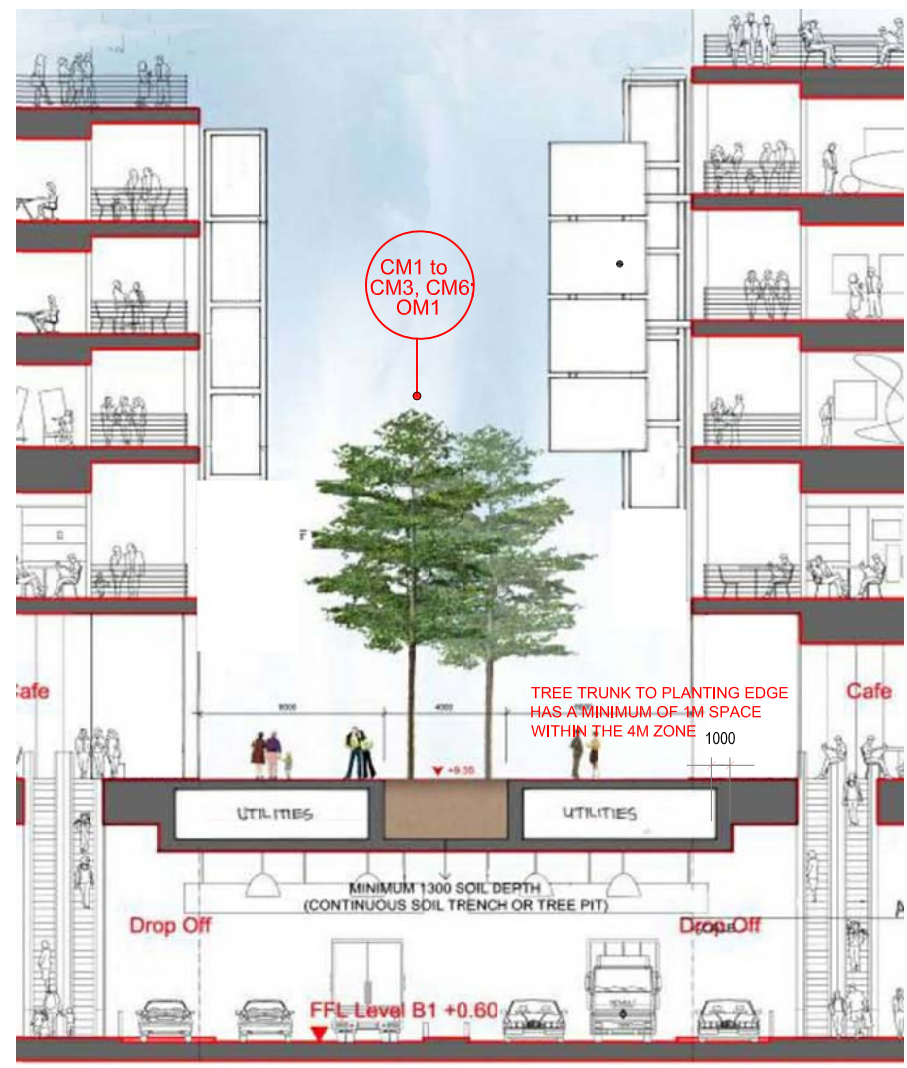


KEY PLAN 1:25,000M @A3

- LEGEND**
- SCHEDULE 2 DESIGNATED PROJECT - UNDERPASS ROAD
 - SCHEDULE 3 DESIGNATED PROJECT BOUNDARY



PAVING MODULE PLAN (THE AVENUE) SCALE 1:250 @A3



SECTION THROUGH AVENUE SCALE 1:250 @A3

Remark: All Piers and Arts Pontoons should be subject to PHO and relevant Government Departments Agreement
 備註: 所有碼頭及藝術浮橋有待<保護海港條例>及有關政府部門同意。
 * Reference Materials For DP Submission. *用作提交發展圖則之參考資料。

© Mott MacDonald Hong Kong Limited
 This document should not be relied on or used in circumstances other than those for which it was originally prepared and for which Mott MacDonald Hong Kong Limited was commissioned. Mott MacDonald Limited accepts no responsibility for this document to any other party other than the person by whom it was commissioned.

Rev	Date	Drawn	Description	Ch'k'd	App'd
-----	------	-------	-------------	--------	-------

Client
WEST KOWLOON CULTURAL DISTRICT AUTHORITY

Mott MacDonald

20/F Two Landmark East
 100 Hoi Ming Street
 Kwun Tong, Kowloon
 Hong Kong
 T +852 2828 5757
 F +852 2827 1823
 W www.mottmac.com.hk

ARTEC **IMG Artists** **Lord**

TFP | FARRELLS **G | H | K**

creative thinking positive solutions **workspace limited** **MVA**

DONNELL

LD ASIA **BMT**

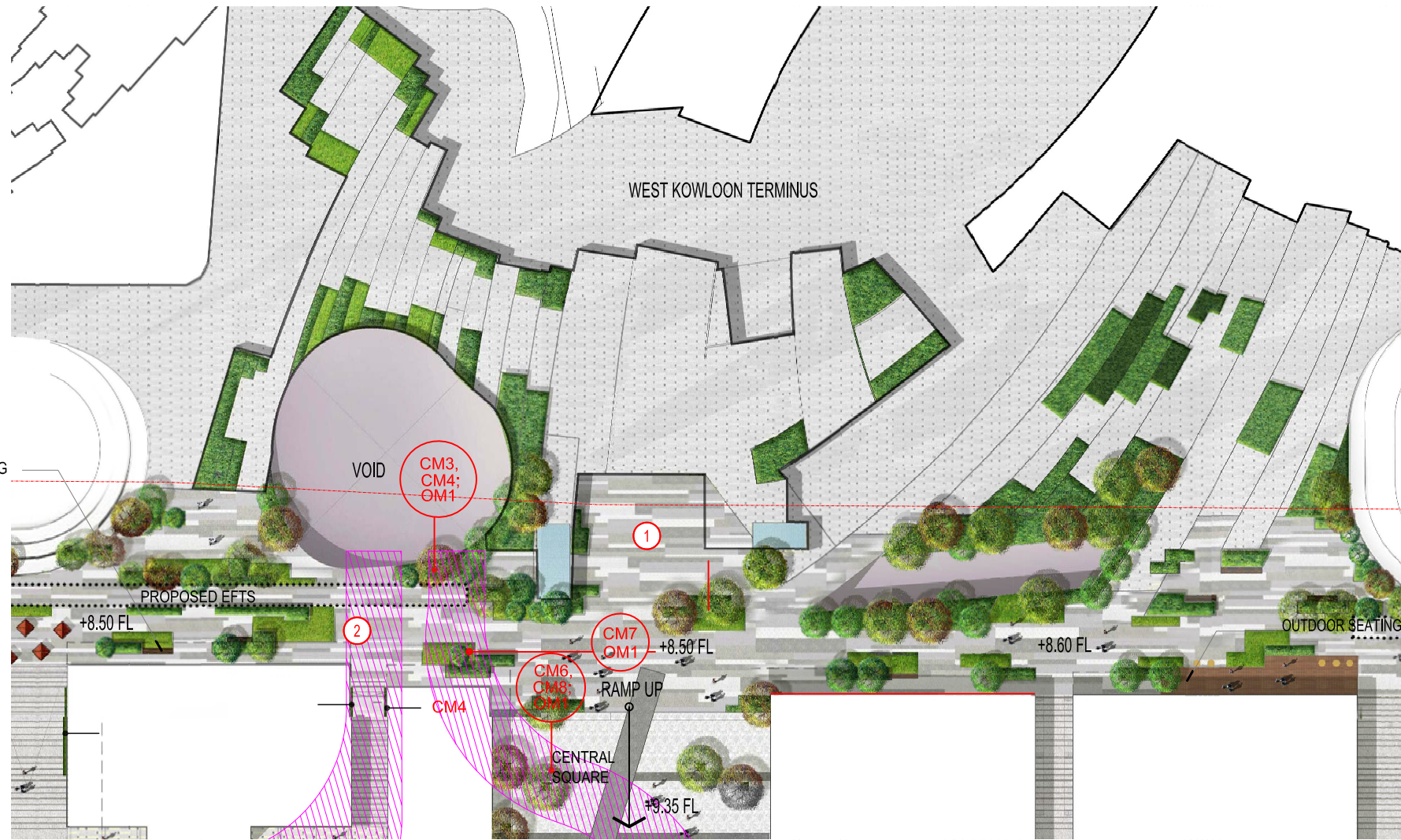
Project
PROJECT CONSULTANCY STUDY FOR WEST KOWLOON CULTURAL DISTRICT DEVELOPMENT PLAN

Title
LANDSCAPE CONCEPT FOR THE AVENUE

Designed		Eng check	
Drawn		Coordination	
Dwg check		Approved	
Scale at AS AHOWN	Status	Rev	

Drawing Number
 Figure 14.10.17

INDICATIVE 只供參考



LANDSCAPE DECK CONNECTING WKT PLAN
SCALE 1:1500M @A3

0 10 20 30 40 50 60 m
1:1500 SCALE BAR

LIST OF VISUAL MITIGATION MEASURES DURING OPERATION PHASE:

MOP1: WITH WELL DESIGNED LOW TO MEDIUM-RISE BUILDINGS, THE PROPOSED WKCD DEVELOPMENT IS ANTICIPATED TO BE HIGHLY COMPATIBLE WITH THE SURROUNDINGS.

MOP2: THE BUILDINGS ON THE WKCD SITE ARE DESIGNED TO ALLOW VISUAL PERMEABILITY FROM THE WKT TO VICTORIA HARBOUR, WHICH IS ACHIEVED BY ALIGNMENT OF THE BUILDINGS ON THE WKCD SITE.

MOP3: AN OPEN VISTA AND GREEN CORRIDOR FROM THE HERITAGE SITES CONSISTING OF THE DECLARED MONUMENTS OF ST. ANDREW'S CHURCH, FORMER KOWLOON BRITISH SCHOOL AND HONG KONG OBSERVATORY THROUGH KOWLOON PARK, AND ALONG WKCD WATERFRONT PROMENADE TOWARDS THE VICTORIA HARBOUR IS PRESERVED.

MOP4: CLUSTERS OF SHADE PLANTING AND APPROPRIATE LANDSCAPING ARE DESIGNED TO PROVIDE A RELAXING WATERFRONT ENVIRONMENT AND SOFTEN THE WATER EDGE.

MOP5: THE OPEN SPACE WILL BE PROVIDED IN VARIOUS FORMS AT DIFFERENT LEVELS IN THE WKCD, INCLUDING PIAZZAS TERRACE GARDEN, GREEN ROOF, A LANDSCAPED WATERFRONT PROMENADE AND VARIOUS GREEN SPACES.

MOP6: THE TERRACED GARDENS AND GREEN ROOF COULD BE CONSIDERED AS MITIGATION MEASURES TO LESSEN THE VISUAL IMPACTS AND PROVIDE NEW VISUAL RESOURCES WHEN VIEWED FROM THE VSRs AT HIGHER LEVELS.

MOP7: UNDULATING BERMS AND THE TREE PLANTED IN THE SURROUNDINGS OF THE VENTILATION BUILDINGS.

MOP8: MITIGATION MEASURES FOR WIND TURBINES LOCATED ALONG THE WATERFRONT INCLUDE USE OF NATURAL COLOUR TONES (E.G. GREEN COLOUR), TO MAKE THEM VISUALLY MORE COMPATIBLE WITH THE SURROUNDINGS.

MOP9: BUFFER TREES FOR SCREENING PURPOSES OR OTHER SOFTSCAPE TREATMENTS E.G. VERTICAL GREEN WALL/ CLIMBER/ ROOF GREENING SHALL BE INCORPORATED TO SOFTEN THE HARD ARCHITECTURAL AND ENGINEERING STRUCTURES AND FACILITIES.

MOP10: LIGHTING CONTROL MEASURES SUCH AS THE USE OF SENSORS AND TIMERS COULD HELP REDUCE USAGE AFTER HOURS.

Remark: All Piers and Arts Pontoons should be subject to PHO and relevant Government Departments Agreement

備註: 所有碼頭及藝術浮橋有待<保護海港條例>及有關政府部門同意。

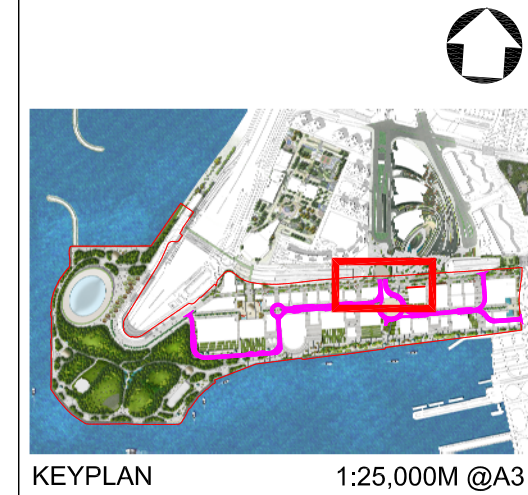
* Reference Materials For DP Submission. *用作提交發展圖則之參考資料。

© Mott MacDonald Hong Kong Limited

This document should not be relied on or used in circumstances other than those for which it was originally prepared and for which Mott MacDonald Hong Kong Limited was commissioned. Mott MacDonald Limited accepts no responsibility for this document to any other party other than the person by whom it was commissioned.



REFERENCE IMAGES



KEYPLAN 1:25,000M @A3

LEGEND
 SCHEDULE 2 DESIGNATED PROJECT - UNDERPASS ROAD
 SCHEDULE 3 DESIGNATED PROJECT BOUNDARY

Rev	Date	Drawn	Description	Ch'k'd	App'd
Client					

WEST KOWLOON CULTURAL DISTRICT AUTHORITY



20/F Two Landmark East,
100 How Ming Street,
Kwun Tong, Kowloon,
Hong Kong
T +852 2828 5757
F +852 2827 1823
W www.mottmac.com.hk



Project
PROJECT CONSULTANCY STUDY FOR WEST KOWLOON CULTURAL DISTRICT DEVELOPMENT PLAN

Title
LANDSCAPE CONCEPT FOR LANDSCAPE DECK CONNECTING WKT

Designed		Eng check	
Drawn		Coordination	
Dwg check		Approved	
Scale at A3 AS AHOWN	Status	Rev	

Drawing Number
 Figure 14.10.18

INDICATIVE 只供參考