

KEY PLAN
SCALE: 1:15000

NOTE:

- REFER TO DRAWING Nos. FIGURE 14.2.2a TO FIGURE 14.2.2d FOR ALIGNMENT AND SETTING OUT DATA OF THE PROPOSED ROAD C.
- REFER TO DRAWING Nos. FIGURE 14.2.2f TO FIGURE 14.2.2j FOR THE ROAD PROFILE.

LEGEND:

--- STUDY AREA

| P1 | JUL 13 | MING | FIRST ISSUE | EY | AFK |
|-----|--------|-------|-------------|-------|-------|
| Rev | Date | Drawn | Description | Ch'kd | App'd |

Client

WEST KOWLOON CULTURAL DISTRICT AUTHORITY

20/F Two Landmark East
100 How Ming Street
Kwun Tong, Kowloon
Hong Kong
☎ +852 2828 6767
☎ +852 2827 1823
www.mottmac.com.hk

Project

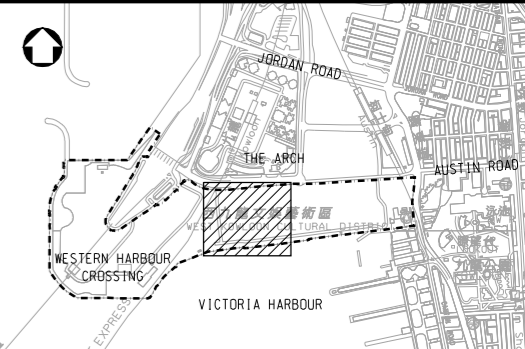
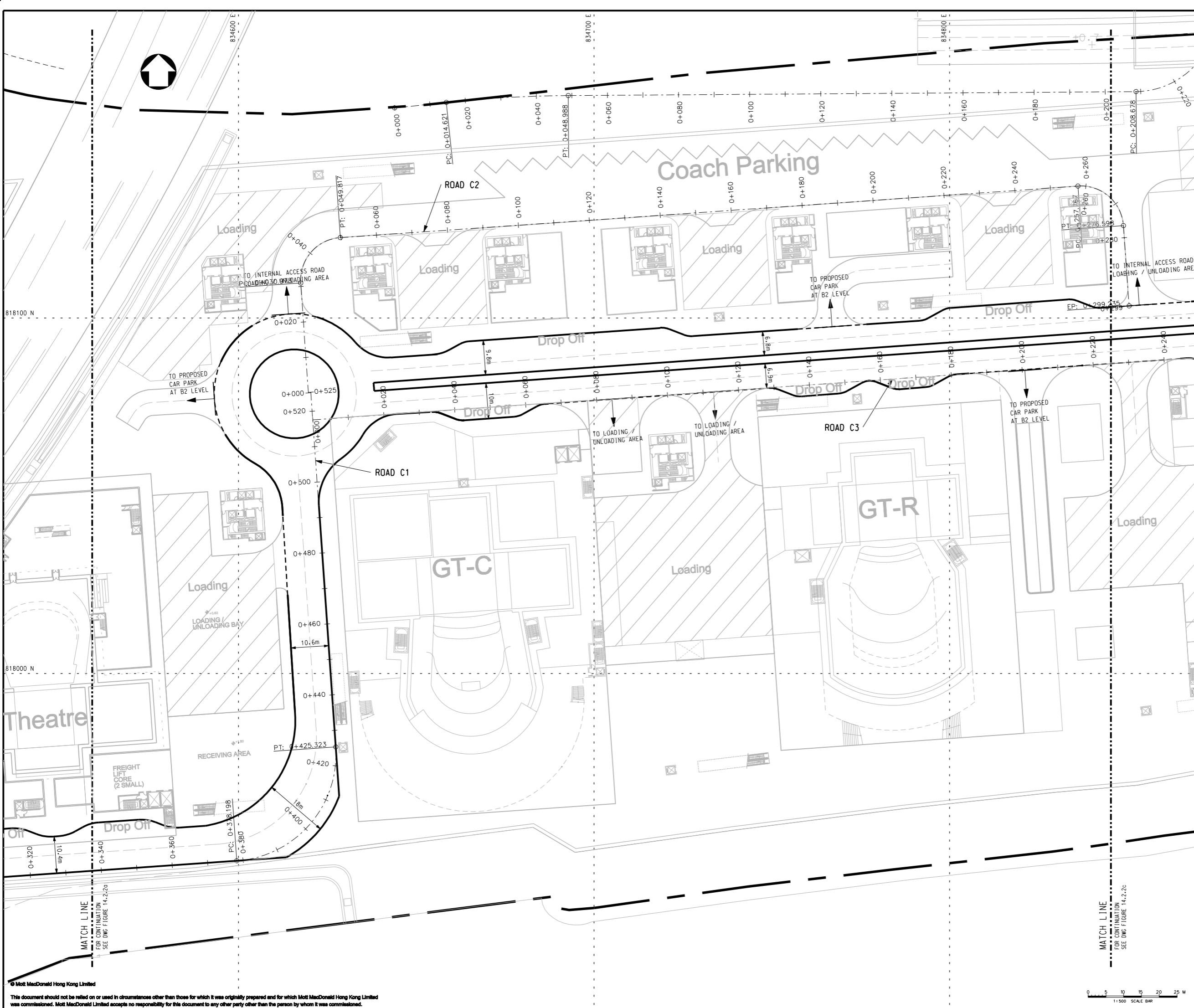
PROJECT CONSULTANCY STUDY FOR WEST KOWLOON CULTURAL DISTRICT DEVELOPMENT PLAN

Title

ROAD C ALIGNMENT AND SETTING OUT DATA (SHEET 1 OF 4)

| | | | |
|--------------|------------|--------------|----|
| Designed | CC | Eng check | OW |
| Drawn | LUN | Coordination | CC |
| Dwg check | OW | Approved | SB |
| Scale at A1 | Status | Rev | |
| 1:500 | PRE | P1 | |

Drawing Number **FIGURE 14.2.2a**



KEY PLAN
SCALE 1:15000

- NOTE:**
- REFER TO DRAWING Nos. FIGURE 14.2.2a TO FIGURE 14.2.2d FOR ALIGNMENT AND SETTING OUT DATA OF THE PROPOSED ROAD C.
 - REFER TO DRAWING Nos. FIGURE 14.2.2f TO FIGURE 14.2.2j FOR THE ROAD PROFILE.

LEGEND:
— STUDY AREA

| P1 | JUL 13 | MING | FIRST ISSUE | EY | AFK |
|-----|--------|-------|-------------|-------|-------|
| Rev | Date | Drawn | Description | Ch'kd | App'd |

Client
WEST KOWLOON CULTURAL DISTRICT AUTHORITY

20F Two Landmark East
100 How Ming Street
Kwun Tong, Kowloon
Hong Kong
☎ +852 2828 6757
☎ +852 2827 1823
www.mottmac.com.hk

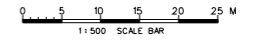
Project
PROJECT CONSULTANCY STUDY FOR WEST KOWLOON CULTURAL DISTRICT DEVELOPMENT PLAN

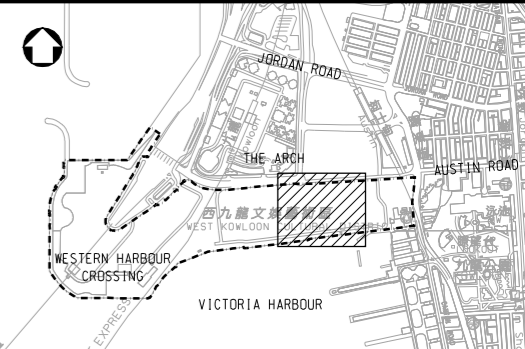
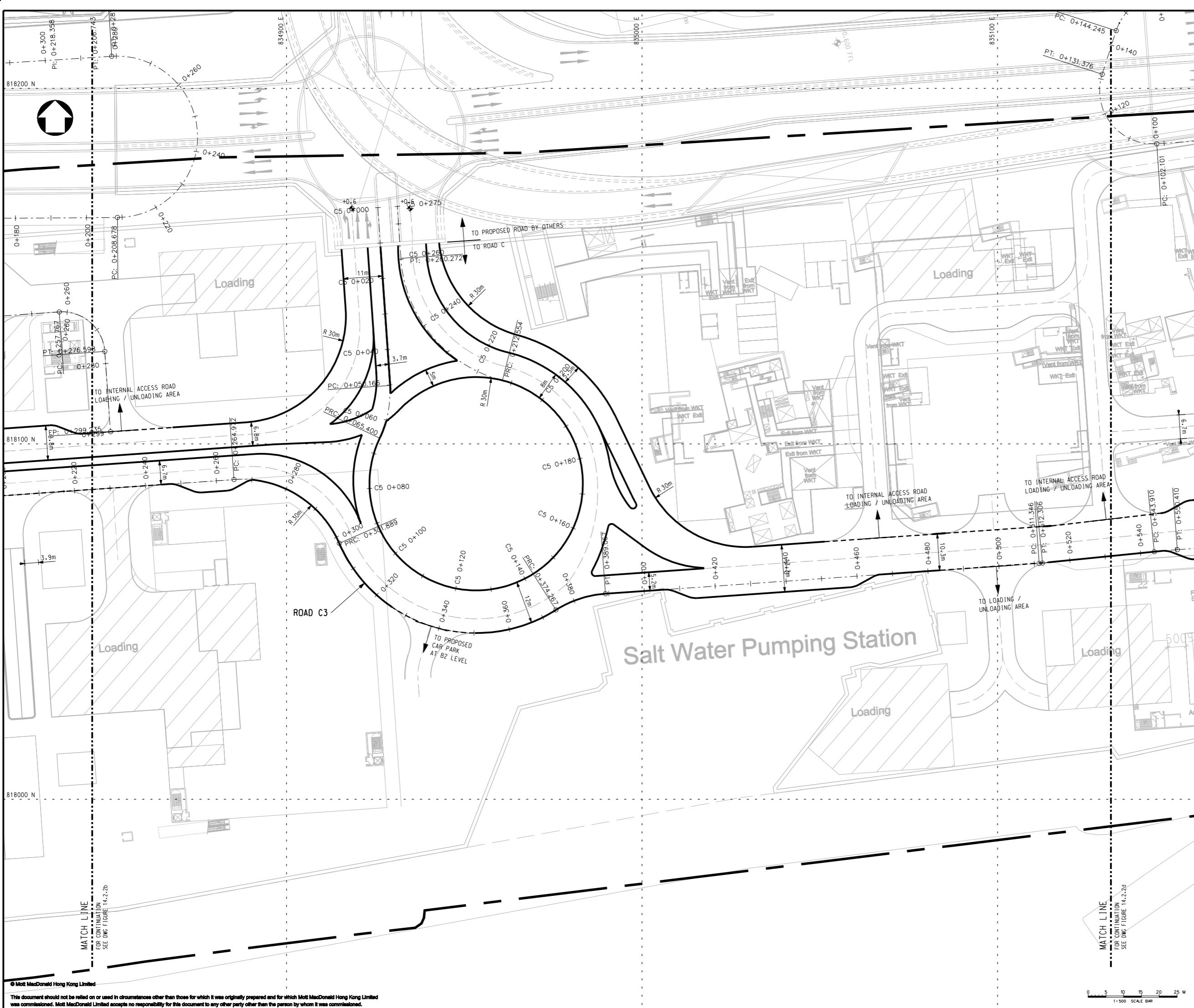
Title
ROAD C ALIGNMENT AND SETTING OUT DATA (SHEET 2 OF 4)

| | | | |
|--------------|------------|--------------|----|
| Designed | CC | Eng check | OW |
| Drawn | LUN | Coordination | CC |
| Dwg check | OW | Approved | SB |
| Scale at A1 | Status | Rev | |
| 1:500 | PRE | P1 | |

Drawing Number
FIGURE 14.2.2b

© Mott MacDonald Hong Kong Limited
This document should not be relied on or used in circumstances other than those for which it was originally prepared and for which Mott MacDonald Hong Kong Limited was commissioned. Mott MacDonald Limited accepts no responsibility for this document to any other party other than the person by whom it was commissioned.





KEY PLAN
SCALE: 1:15000

NOTE:

- REFER TO DRAWING Nos. FIGURE 14.2.2a TO FIGURE 14.2.2d FOR ALIGNMENT AND SETTING OUT DATA OF THE PROPOSED ROAD C.
- REFER TO DRAWING Nos. FIGURE 14.2.2f TO FIGURE 14.2.2j FOR THE ROAD PROFILE.

LEGEND:

--- STUDY AREA

| P1 | JUL 13 | MING | FIRST ISSUE | EY | AFK |
|-----|--------|-------|-------------|-------|-------|
| Rev | Date | Drawn | Description | Ch'kd | App'd |

Client

WEST KOWLOON CULTURAL DISTRICT AUTHORITY

20/F Two Landmark East
100 How Ming Street
Kwun Tong, Kowloon
Hong Kong
☎ +852 2828 6767
☎ +852 2827 1823
www.mottmac.com.hk

Project

PROJECT CONSULTANCY STUDY FOR WEST KOWLOON CULTURAL DISTRICT DEVELOPMENT PLAN

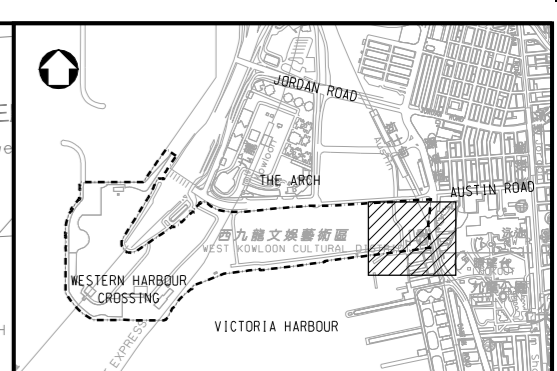
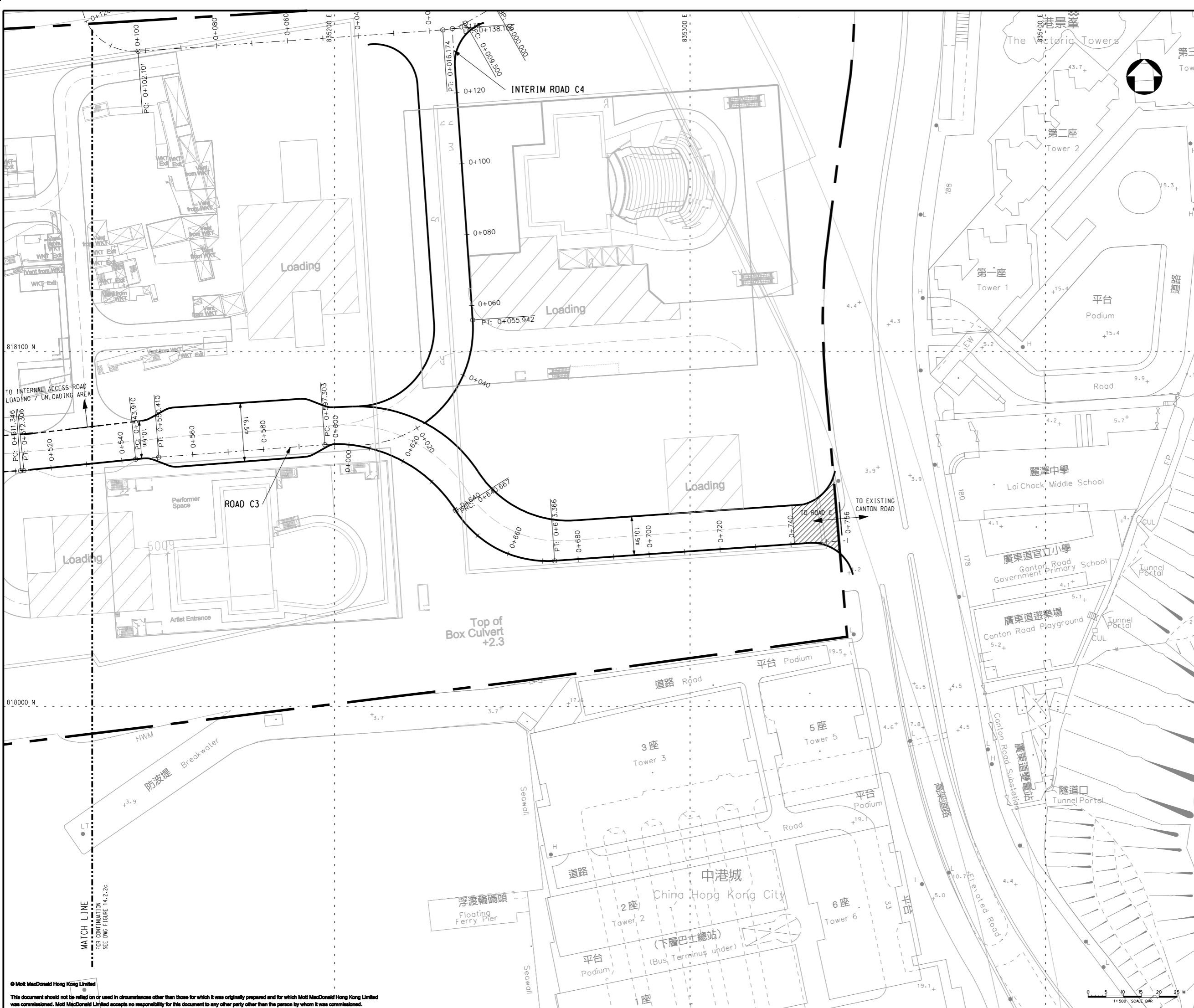
Title

ROAD C ALIGNMENT AND SETTING OUT DATA (SHEET 3 OF 4)

| | | | |
|--------------|------------|--------------|----|
| Designed | CC | Eng check | OW |
| Drawn | LUN | Coordination | CC |
| Dwg check | OW | Approved | SB |
| Scale at A1 | Status | Rev | |
| 1:500 | PRE | P1 | |

Drawing Number **FIGURE 14.2.2c**

© Mott MacDonald Hong Kong Limited
This document should not be relied on or used in circumstances other than those for which it was originally prepared and for which Mott MacDonald Hong Kong Limited was commissioned. Mott MacDonald Limited accepts no responsibility for this document to any other party other than the person by whom it was commissioned.



KEY PLAN
SCALE 1:15000

NOTE:

- REFER TO DRAWING Nos. FIGURE 14.2.2a TO FIGURE 14.2.2d FOR ALIGNMENT AND SETTING OUT DATA OF THE PROPOSED ROAD C.
- REFER TO DRAWING Nos. FIGURE 14.2.2f TO FIGURE 14.2.2j FOR THE ROAD PROFILE.

LEGEND:

- STUDY AREA
- ▨ OPEN ROAD SECTION

| Rev | Date | Drawn | Description | Ch'kd | App'd |
|-----|--------|-------|-------------|-------|-------|
| P1 | JUL 13 | MING | FIRST ISSUE | EY | AFK |

Client
WEST KOWLOON CULTURAL DISTRICT AUTHORITY

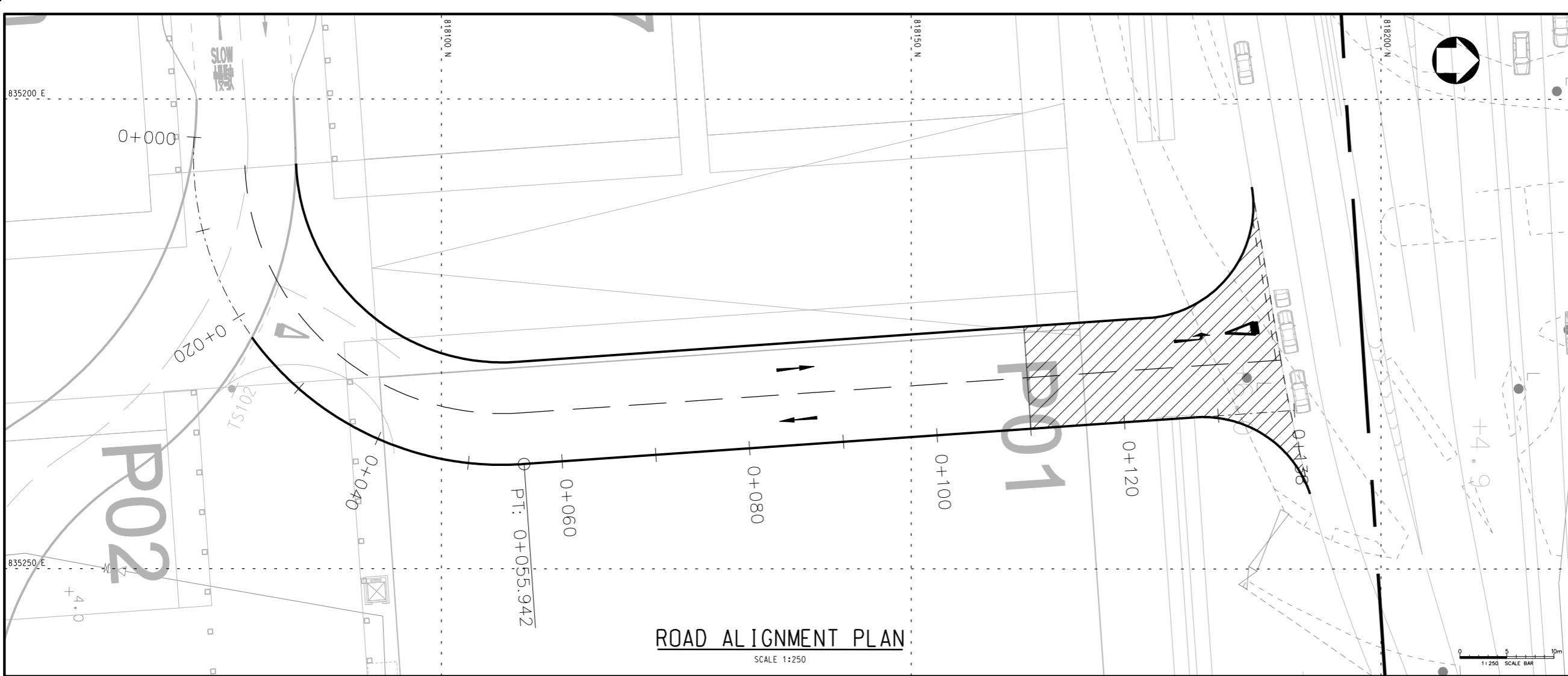
20F Two Landmark East
100 How Ming Street
Kowloon, Kowloon
Hong Kong
T +852 2828 6767
F +852 2827 1623
www.mottmac.com.hk

Project
PROJECT CONSULTANCY STUDY FOR WEST KOWLOON CULTURAL DISTRICT DEVELOPMENT PLAN

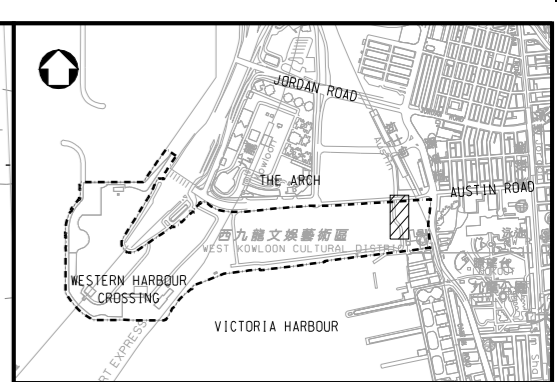
Title
ROAD C ALIGNMENT AND SETTING OUT DATA (SHEET 4 OF 4)

| | | | |
|-------------|--------|--------------|----|
| Designed | CC | Eng check | OW |
| Drawn | LUN | Coordination | CC |
| Dwg check | OW | Approved | SB |
| Scale at A1 | Status | Rev | |
| 1:500 | PRE | P1 | |

Drawing Number **FIGURE 14.2.2d**



ROAD ALIGNMENT PLAN
SCALE 1:250



KEY PLAN
SCALE 1:15000

- NOTE:
1. ALL DIMENSIONS ARE IN MILLIMETRES UNLESS NOTED OTHERWISE.
 2. ALL LEVELS ARE IN METRES TO PRINCIPAL DATUM (PD) UNLESS NOTED OTHERWISE.
 3. ALL CO-ORDINATES REFER TO HONG KONG (1980) METRIC GRID CO-ORDINATES SYSTEM.

- LEGEND:
- SITE BOUNDARY
 - ▨ OPEN ROAD SECTION

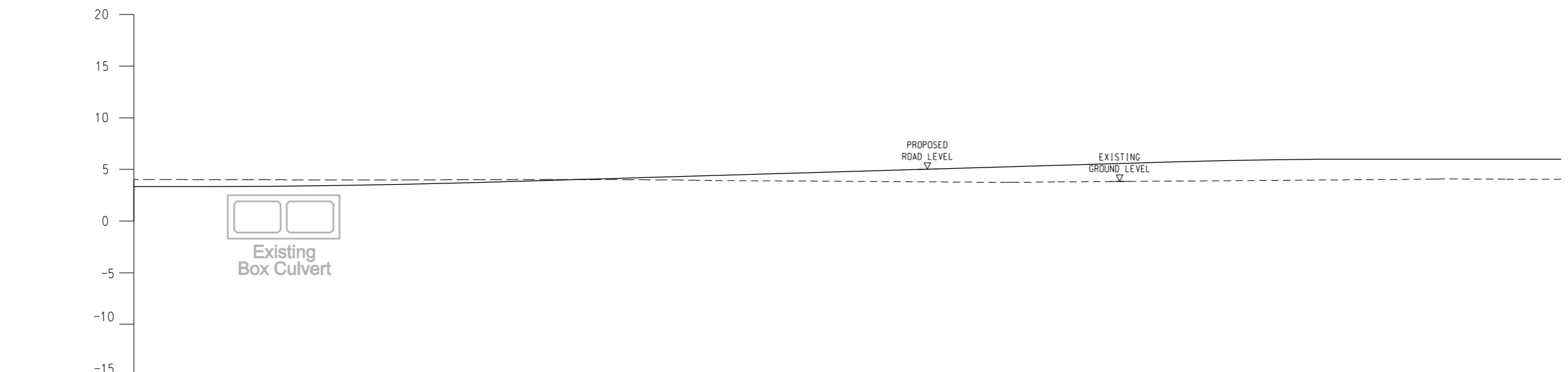
| Rev | Date | Drawn | Description | Ch'kd | App'd |
|-----|--------|-------|-------------|-------|-------|
| P1 | JUL 13 | MING | FIRST ISSUE | EY | AFK |

Client
WEST KOWLOON CULTURAL DISTRICT AUTHORITY

20F Two Landmark East
100 How Ming Street
Kwun Tong, Kowloon
Hong Kong
☎ +852 2828 6767
☎ +852 2827 1823
www.mottmac.com.hk

Project
PROJECT CONSULTANCY STUDY FOR WEST KOWLOON CULTURAL DISTRICT DEVELOPMENT PLAN

Title
INTERIM ROAD C4 - LAYOUT PLAN AND PROFILE

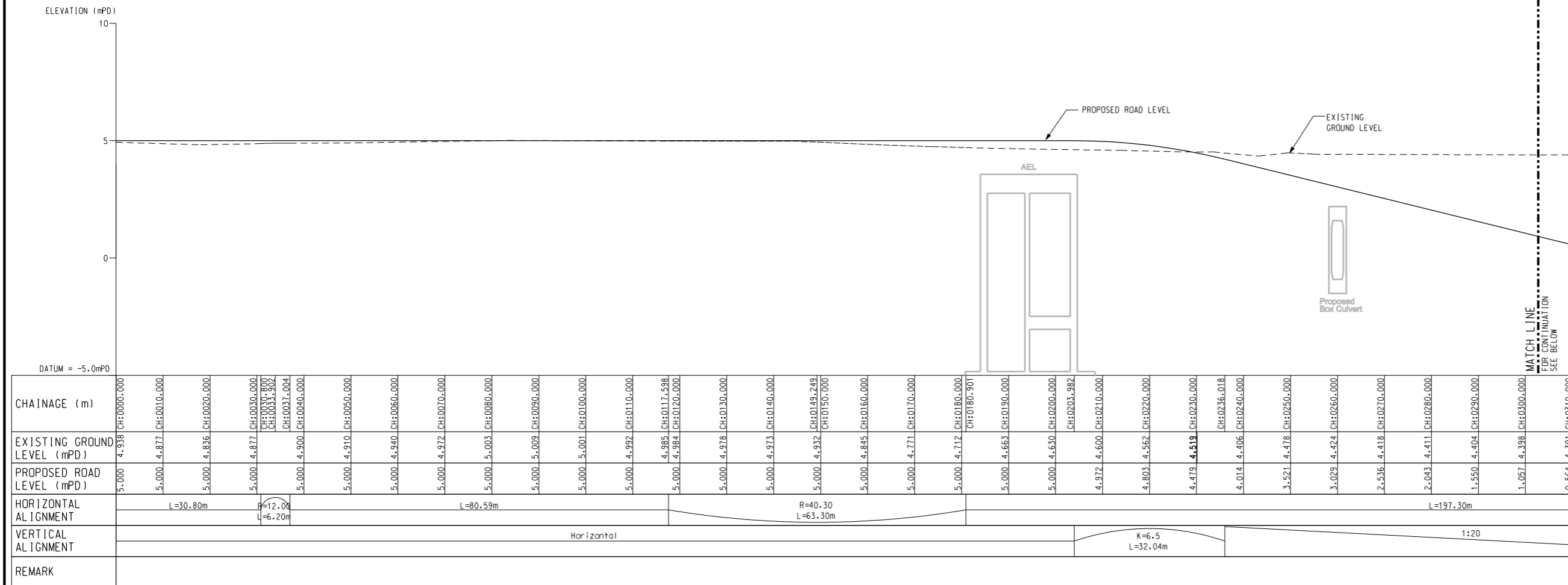


| CHAINAGE (m) | EXISTING GROUND LEVEL (mPD) | PROPOSED ROAD LEVEL (mPD) | HORIZONTAL ALIGNMENT | VERTICAL ALIGNMENT | REMARK |
|-------------------|-----------------------------|---------------------------|----------------------|--------------------|--------|
| 3+350 CH:0000.000 | 4.033 | 3.350 | R=32.90 L=55.94m | Horizontal | |
| 3+350 CH:0006.750 | 4.011 | 3.350 | | | |
| 3+356 CH:0010.000 | 4.003 | 3.356 | K=9.0 L=26.50m | | |
| 3+448 CH:0020.000 | 3.987 | 3.448 | | | |
| 3+600 CH:0027.971 | 3.988 | 3.600 | 1:34 | | |
| 3+650 CH:0030.000 | 3.994 | 3.650 | | | |
| 3+740 CH:0033.250 | 4.003 | 3.740 | K=6.5 L=19.14m | Horizontal | |
| 3+939 CH:0040.000 | 4.024 | 3.939 | | | |
| 4+233 CH:0050.000 | 3.990 | 4.233 | Horizontal | | |
| 4+408 CH:0055.942 | 3.951 | 4.408 | | | |
| 4+528 CH:0060.000 | 3.923 | 4.528 | L=82.16m | | |
| 4+822 CH:0070.000 | 3.856 | 4.822 | | | |
| 5+111 CH:0080.000 | 3.789 | 5.111 | Horizontal | | |
| 5+411 CH:0090.000 | 3.801 | 5.411 | | | |
| 5+718 CH:0100.431 | 3.880 | 5.718 | Horizontal | | |
| 5+930 CH:0110.000 | 3.952 | 5.930 | | | |
| 6+000 CH:0119.569 | 4.024 | 6.000 | Horizontal | | |
| 6+000 CH:0130.000 | 4.069 | 6.000 | | | |
| 6+000 CH:0138.106 | 4.035 | 6.000 | | | |

| Designed | CC | Eng check | OW |
|-------------|--------|--------------|----|
| Drawn | LUN | Coordination | CC |
| Dwg check | OW | Approved | SB |
| Scale at A1 | Status | Rev | |
| 1:250 | PRE | P1 | |

Drawing Number
FIGURE 14.2.2e

- NOTE:
1. ALL DIMENSIONS ARE IN MILLIMETRES UNLESS NOTED OTHERWISE.
 2. ALL LEVELS ARE IN METRES TO PRINCIPAL DATUM (PD) UNLESS NOTED OTHERWISE.
 3. ALL CO-ORDINATES REFER TO HONG KONG (1980) METRIC GRID CO-ORDINATES SYSTEM.
 4. ALL CHANGES ARE IN METRES UNLESS NOTED OTHERWISE.
 5. THIS DRAWING SHALL BE READ IN CONJUNCTION WITH DRAWING NO. FIGURE 14.2.2a - 14.2.2e.



ROAD PROFILE
SCALE 1:500(H)
1:100(V)

| Rev | Date | Drawn | Description | Ch'kd | App'd |
|-----|--------|-------|-------------|-------|-------|
| P1 | JUL 13 | MING | FIRST ISSUE | EY | AFK |

WEST KOWLOON CULTURAL DISTRICT AUTHORITY

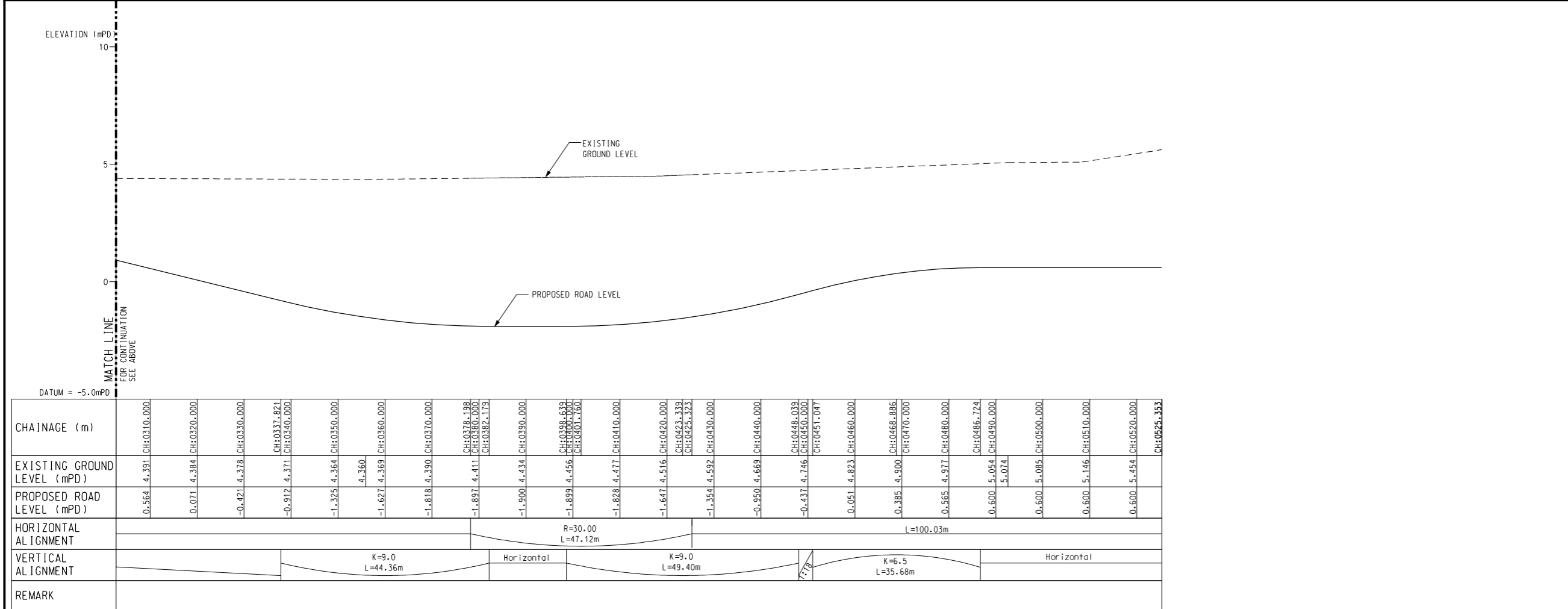


PROJECT CONSULTANCY STUDY FOR WEST KOWLOON CULTURAL DISTRICT DEVELOPMENT PLAN

ROAD C1 - ROAD PROFILE

| Designed | CC | Eng check | OW |
|-------------|--------|--------------|----|
| Drawn | LUN | Coordination | CC |
| Dwg check | OW | Approved | SB |
| Scale at A1 | Status | Rev | |
| AS SHOWN | PRE | P1 | |

FIGURE 14.2.2f



ELEVATION (mPD)
10
5
0
DATUM = -5.0mPD

EXISTING GROUND LEVEL
PROPOSED ROAD LEVEL

| | | | | | | | | | | | | | | | | | | | | | | | | | | | | | | | | | |
|-----------------------------|-------------|-------------|-------------|---------------------|-------------|-------------------|-------------|-------------|-------------|-------------|-------------|-------------|-------------|-------------|-------------|-------------|-------------|---------------------|-------------|-------------------|-------------|-------------|-------------------|-------------|-------------|-------------|-------------|-------------|-------------|-------------|-------------|-------------|--|
| CHAINAGE (m) | CH:0000.000 | CH:0010.000 | CH:0020.000 | CH:0030.000 | CH:0040.000 | CH:0050.000 | CH:0060.000 | CH:0070.000 | CH:0080.000 | CH:0090.000 | CH:0098.068 | CH:0100.000 | CH:0110.000 | CH:0120.000 | CH:0130.000 | CH:0140.000 | CH:0150.000 | CH:0160.000 | CH:0170.000 | CH:0180.000 | CH:0190.000 | CH:0200.000 | CH:0210.000 | CH:0220.000 | CH:0230.000 | CH:0240.000 | CH:0250.000 | CH:0260.000 | CH:0270.000 | CH:0280.000 | CH:0290.000 | CH:0300.000 | |
| EXISTING GROUND LEVEL (mPD) | 5.609 | 5.917 | 6.225 | 6.532 | 6.835 | 7.009 | 7.073 | 7.137 | 7.251 | 7.275 | 7.218 | 6.952 | 6.828 | 6.656 | 6.581 | 6.535 | 6.440 | 6.237 | 6.132 | 6.052 | 5.796 | 5.540 | 5.284 | 5.029 | 5.030 | 5.034 | 5.023 | 5.067 | 5.067 | 5.067 | 5.067 | | |
| PROPOSED ROAD LEVEL (mPD) | 0.600 | 0.600 | 0.600 | 0.552 | 0.378 | 0.039 | -0.323 | -0.576 | -0.717 | -0.750 | -0.750 | -0.750 | -0.750 | -0.750 | -0.750 | -0.750 | -0.750 | -0.750 | -0.750 | -0.750 | -0.750 | -0.750 | -0.750 | -0.750 | -0.750 | -0.750 | -0.750 | -0.750 | -0.750 | -0.750 | -0.750 | | |
| HORIZONTAL ALIGNMENT | L=30.98m | | | R=12.00 L=18.84m | | L=246.57m | | | | | | | | | | | | R=12.00 L=18.83m | | L=22.64m | | | | | | | | | | | | | |
| VERTICAL ALIGNMENT | Horizontal | | | K=6.5 L=26.52m | | K=9.0 L=36.71m | | | | | | | | | | | | Horizontal | | K=4.5 L=20.25m | | 1:22 | K=2.5 L=11.25m | | Horizontal | | | | | | | | |
| REMARK | | | | | | | | | | | | | | | | | | | | | | | | | | | | | | | | | |

ROAD PROFILE
SCALE 1:500(H)
1:100(V)

- NOTE:
1. ALL DIMENSIONS ARE IN MILLIMETRES UNLESS NOTED OTHERWISE.
 2. ALL LEVELS ARE IN METRES TO PRINCIPAL DATUM (PD) UNLESS NOTED OTHERWISE.
 3. ALL CO-ORDINATES REFER TO HONG KONG (1980) METRIC GRID CO-ORDINATES SYSTEM.
 4. ALL CHANGES ARE IN METRES UNLESS NOTED OTHERWISE.
 5. THIS DRAWING SHALL BE READ IN CONJUNCTION WITH DRAWING NO. FIGURE 14.2.2a - 14.2.2e.

| P1 | JUL 13 | MING | FIRST ISSUE | EY | AFK |
|-----|--------|-------|-------------|-------|-------|
| Rev | Date | Drawn | Description | Ch'kd | App'd |

Client
WEST KOWLOON CULTURAL DISTRICT AUTHORITY



20F Two Landmark East
100 How Ming Street
Kowloon, Kowloon
Hong Kong
☎ +852 2828 6767
☎ +852 2827 1623
www.mottmac.com.hk













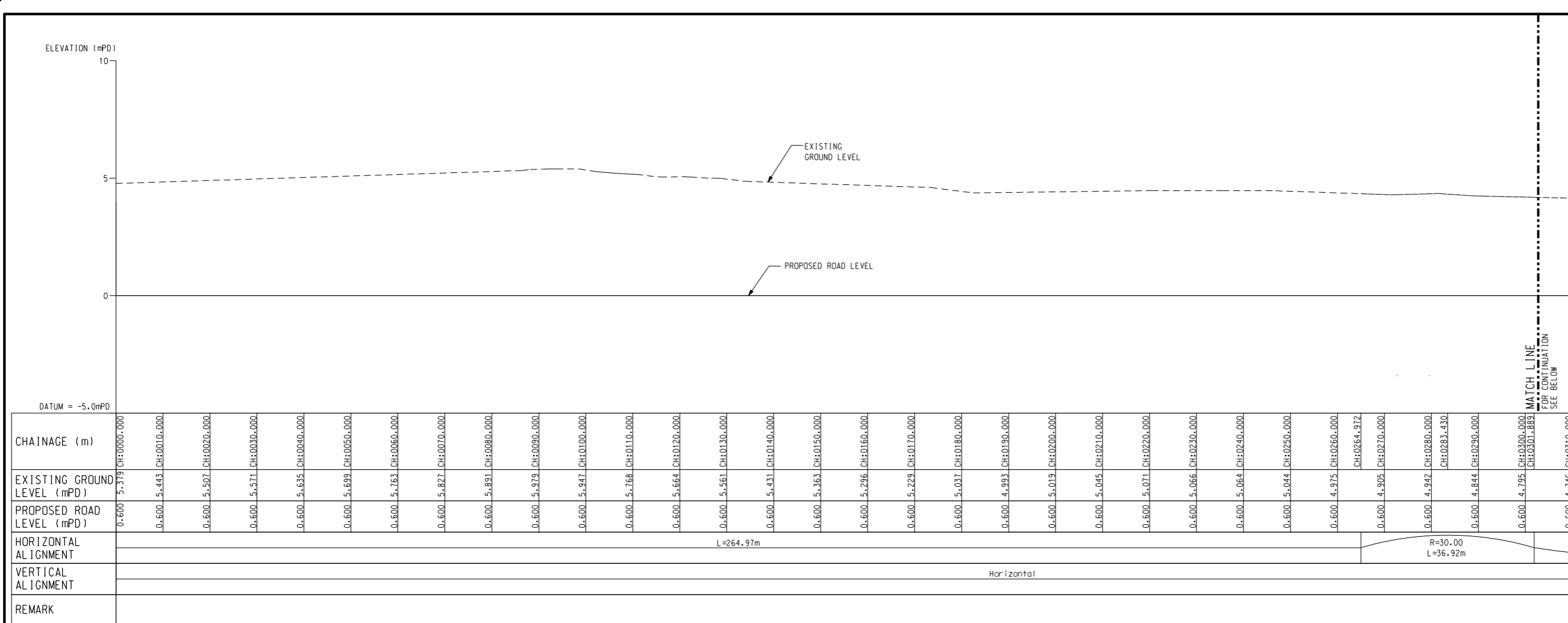
Project
PROJECT CONSULTANCY STUDY FOR WEST KOWLOON CULTURAL DISTRICT DEVELOPMENT PLAN

Title
ROAD C2 - ROAD PROFILE

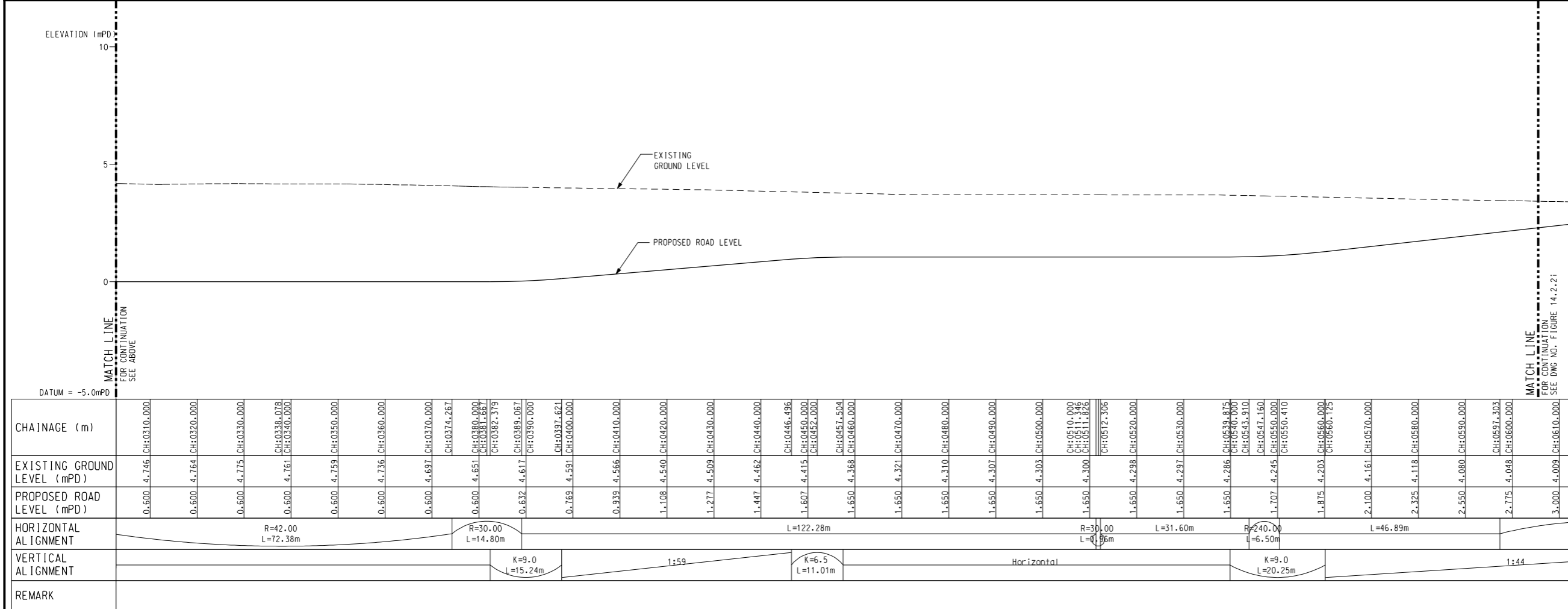
| | | | |
|-----------------|------------|--------------|----|
| Designed | CC | Eng check | OW |
| Drawn | LUN | Coordination | CC |
| Dwg check | OW | Approved | SB |
| Scale at A1 | Status | Rev | |
| AS SHOWN | PRE | P1 | |

Drawing Number
FIGURE 14.2.2g

- NOTE:
1. ALL DIMENSIONS ARE IN MILLIMETRES UNLESS NOTED OTHERWISE.
 2. ALL LEVELS ARE IN METRES TO PRINCIPAL DATUM (PD) UNLESS NOTED OTHERWISE.
 3. ALL CO-ORDINATES REFER TO HONG KONG (1980) METRIC GRID CO-ORDINATES SYSTEM.
 4. ALL CHANGES ARE IN METRES UNLESS NOTED OTHERWISE.
 5. THIS DRAWING SHALL BE READ IN CONJUNCTION WITH DRAWING NO. FIGURE 14.2.2a - 14.2.2e.



ROAD PROFILE
SCALE 1:500(H)
1:100(V)



ROAD PROFILE
SCALE 1:500(H)
1:100(V)

| Rev | Date | Drawn | Description | Ch'kd | App'd |
|-----|--------|-------|-------------|-------|-------|
| P1 | JUL 13 | MING | FIRST ISSUE | EY | AFK |

Client
WEST KOWLOON CULTURAL DISTRICT AUTHORITY



Project
PROJECT CONSULTANCY STUDY FOR WEST KOWLOON CULTURAL DISTRICT DEVELOPMENT PLAN

Title
ROAD C3 - ROAD PROFILE (SHEET 1 OF 2)

| Designed | CC | Eng check | OW |
|-----------------|------------|--------------|----|
| Drawn | LUN | Coordination | CC |
| Dwg check | OW | Approved | SB |
| Scale at A1 | Status | Rev | |
| AS SHOWN | PRE | P1 | |

Drawing Number
FIGURE 14.2.2h

ELEVATION (mPD)

10

5

0

MATCH LINE
FOR CONTINUATION
SEE DWG NO. FIGURE 14.2.2h

EXISTING GROUND LEVEL
PROPOSED ROAD LEVEL



Existing Box Culvert

DATUM = -5.0mPD

| CHAINAGE (m) | EXISTING GROUND LEVEL (mPD) | PROPOSED ROAD LEVEL (mPD) | HORIZONTAL ALIGNMENT | VERTICAL ALIGNMENT | REMARK |
|--------------|-----------------------------|---------------------------|----------------------|--------------------|--------|
| CH:0610.000 | 4.009 | 3.000 | R=40.00 L=43.36m | | |
| CH:0618.985 | 3.962 | 3.225 | | | |
| CH:0620.000 | | | | | |
| CH:0630.000 | 3.922 | 3.450 | R=30.30 L=32.70m | K=6.5 L=14.62m | |
| CH:0640.000 | 3.899 | 3.675 | | | |
| CH:0640.667 | | | | | |
| CH:0642.688 | | | | | |
| CH:0650.000 | 3.877 | 3.859 | L=82.55m | Horizontal | |
| CH:0657.016 | | | | | |
| CH:0657.312 | | | | | |
| CH:0660.000 | 3.863 | 3.900 | | | |
| CH:0670.000 | 3.860 | 3.900 | | | |
| CH:0673.366 | | | | | |
| CH:0680.000 | 3.866 | 3.900 | | | |
| CH:0690.000 | 3.872 | 3.900 | | | |
| CH:0700.000 | 3.878 | 3.900 | | | |
| CH:0710.000 | 3.884 | 3.900 | | | |
| CH:0720.000 | 3.890 | 3.900 | | | |
| CH:0730.000 | 3.896 | 3.900 | | | |
| CH:0740.000 | 3.902 | 3.900 | | | |
| CH:0750.000 | 3.909 | 3.900 | | | |
| CH:0751.147 | | | | | |
| CH:0755.917 | | | | | |
| CH:0760.000 | 3.900 | 3.900 | | | |
| CH:0770.000 | 3.900 | 3.900 | | | |
| CH:0780.000 | 3.900 | 3.900 | | | |
| CH:0790.000 | 3.900 | 3.900 | | | |
| CH:0800.000 | 3.900 | 3.900 | | | |
| CH:0810.000 | 3.900 | 3.900 | | | |
| CH:0820.000 | 3.900 | 3.900 | | | |
| CH:0830.000 | 3.900 | 3.900 | | | |
| CH:0840.000 | 3.900 | 3.900 | | | |
| CH:0850.000 | 3.900 | 3.900 | | | |
| CH:0860.000 | 3.900 | 3.900 | | | |
| CH:0870.000 | 3.900 | 3.900 | | | |
| CH:0880.000 | 3.900 | 3.900 | | | |
| CH:0890.000 | 3.900 | 3.900 | | | |
| CH:0900.000 | 3.900 | 3.900 | | | |

ROAD PROFILE

SCALE 1:500(H)
1:100(V)

NOTE:

1. ALL DIMENSIONS ARE IN MILLIMETRES UNLESS NOTED OTHERWISE.
2. ALL LEVELS ARE IN METRES TO PRINCIPAL DATUM (PD) UNLESS NOTED OTHERWISE.
3. ALL CO-ORDINATES REFER TO HONG KONG (1980) METRIC GRID CO-ORDINATES SYSTEM.
4. ALL CHANGIAGES ARE IN METRES UNLESS NOTED OTHERWISE.
5. THIS DRAWING SHALL BE READ IN CONJUNCTION WITH DRAWING NO. FIGURE 14.2.2a - 14.2.2e.

| Rev | Date | Drawn | Description | Ch'kd | App'd |
|-----|--------|-------|-------------|-------|-------|
| P1 | JUL 13 | MING | FIRST ISSUE | EY | AFK |

Client
WEST KOWLOON CULTURAL DISTRICT AUTHORITY



20F Two Landmark East
100 How Ming Street
Kwun Tong, Kowloon
Hong Kong
☎ +852 2828 6757
☎ +852 2827 1823
www.mottmac.com.hk



Project
PROJECT CONSULTANCY STUDY FOR WEST KOWLOON CULTURAL DISTRICT DEVELOPMENT PLAN

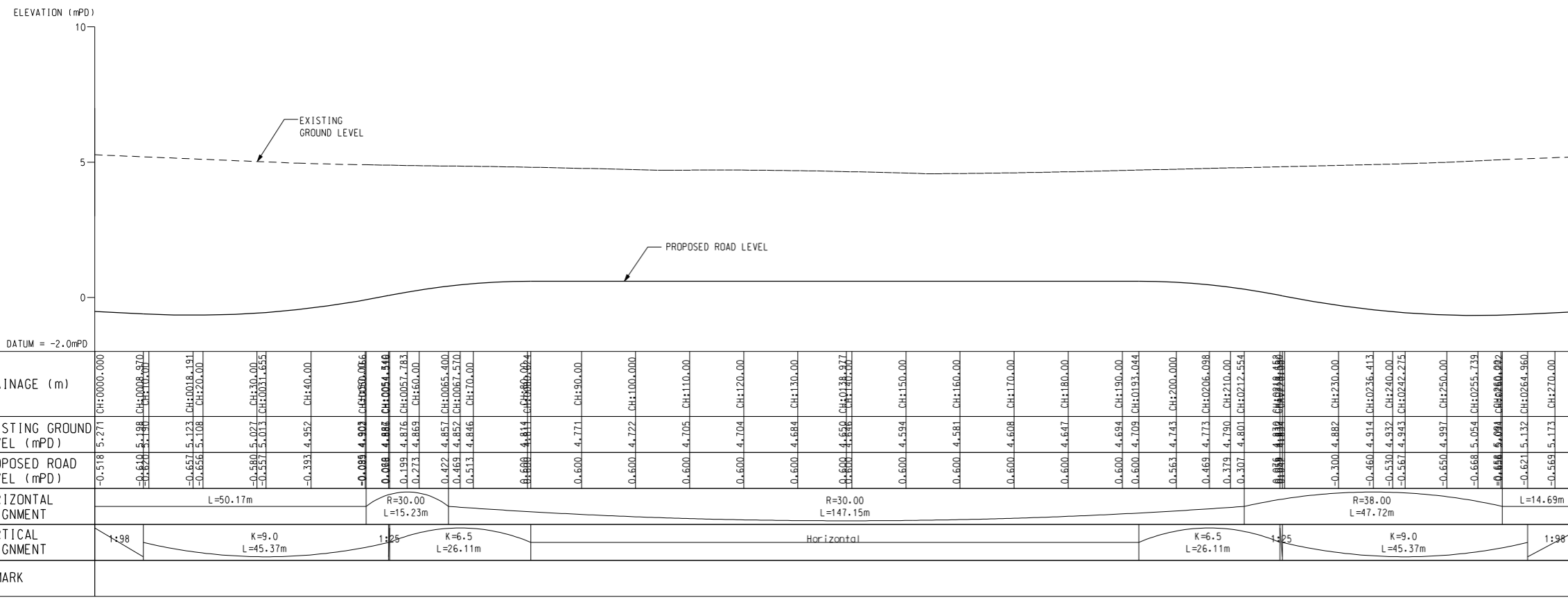
Title
ROAD C3 - ROAD PROFILE (SHEET 2 OF 2)

| | | | |
|-----------------|------------|--------------|----|
| Designed | CC | Eng check | OW |
| Drawn | LUN | Coordination | CC |
| Dwg check | OW | Approved | SB |
| Scale at A1 | Status | Rev | |
| AS SHOWN | PRE | P1 | |

Drawing Number
FIGURE 14.2.2i

© Mott MacDonald Hong Kong Limited
This document should not be relied on or used in circumstances other than those for which it was originally prepared and for which Mott MacDonald Hong Kong Limited was commissioned. Mott MacDonald Limited accepts no responsibility for this document to any other party other than the person by whom it was commissioned.

- NOTE:
1. ALL DIMENSIONS ARE IN MILLIMETRES UNLESS NOTED OTHERWISE.
 2. ALL LEVELS ARE IN METRES TO PRINCIPAL DATUM (PD) UNLESS NOTED OTHERWISE.
 3. ALL CO-ORDINATES REFER TO HONG KONG (1980) METRIC GRID CO-ORDINATES SYSTEM.
 4. ALL CHANGES ARE IN METRES UNLESS NOTED OTHERWISE.
 5. THIS DRAWING SHALL BE READ IN CONJUNCTION WITH DRAWING NO. FIGURE 14.2.2a - 14.2.2e.



ROAD PROFILE
SCALE 1:500(H)
1:100(V)

| Rev | Date | Drawn | Description | Ch'kd | App'd |
|-----|--------|-------|-------------|-------|-------|
| P1 | JUL 13 | MING | FIRST ISSUE | EY | AFK |

Client
WEST KOWLOON CULTURAL DISTRICT AUTHORITY

20/F Two Landmark East
100 How Ming Street
Kwun Tong, Kowloon
Hong Kong
☎ +852 2828 6767
☎ +852 2827 1623
www.mottmac.com.hk

Project
PROJECT CONSULTANCY STUDY FOR WEST KOWLOON CULTURAL DISTRICT DEVELOPMENT PLAN

Title
ROAD C5 - ROAD PROFILE

| | | | |
|-----------------|------------|--------------|----|
| Designed | CC | Eng check | OW |
| Drawn | LUN | Coordination | CC |
| Dwg check | OW | Approved | SB |
| Scale at A1 | Status | Rev | |
| AS SHOWN | PRE | P1 | |

Drawing Number
FIGURE 14.2.2j