

KEY PLAN

- PROPOSED PLAZA AREAS 廣場
- WATER FEATURE 水景
- TREE 樹木
- SHRUB 灌木
- LAWN/GROUND COVER 草地/地被
- HARD PAVING AREA 鋪裝
- SCHEDULE 2 DESIGNATED PROJECT - AUSTIN ROAD FLYOVER
- SCHEDULE 3 DESIGNATED PROJECT BOUNDARY

Rev	Date	Drawn	Description	Chk'd	App'd
Client					

WEST KOWLOON CULTURAL DISTRICT AUTHORITY

20/F Two Landmark East
100 How Ming Street
Kowloon, Kowloon
Hong Kong
T +852 2828 5757
F +852 2827 1823
W www.mottmac.com.hk

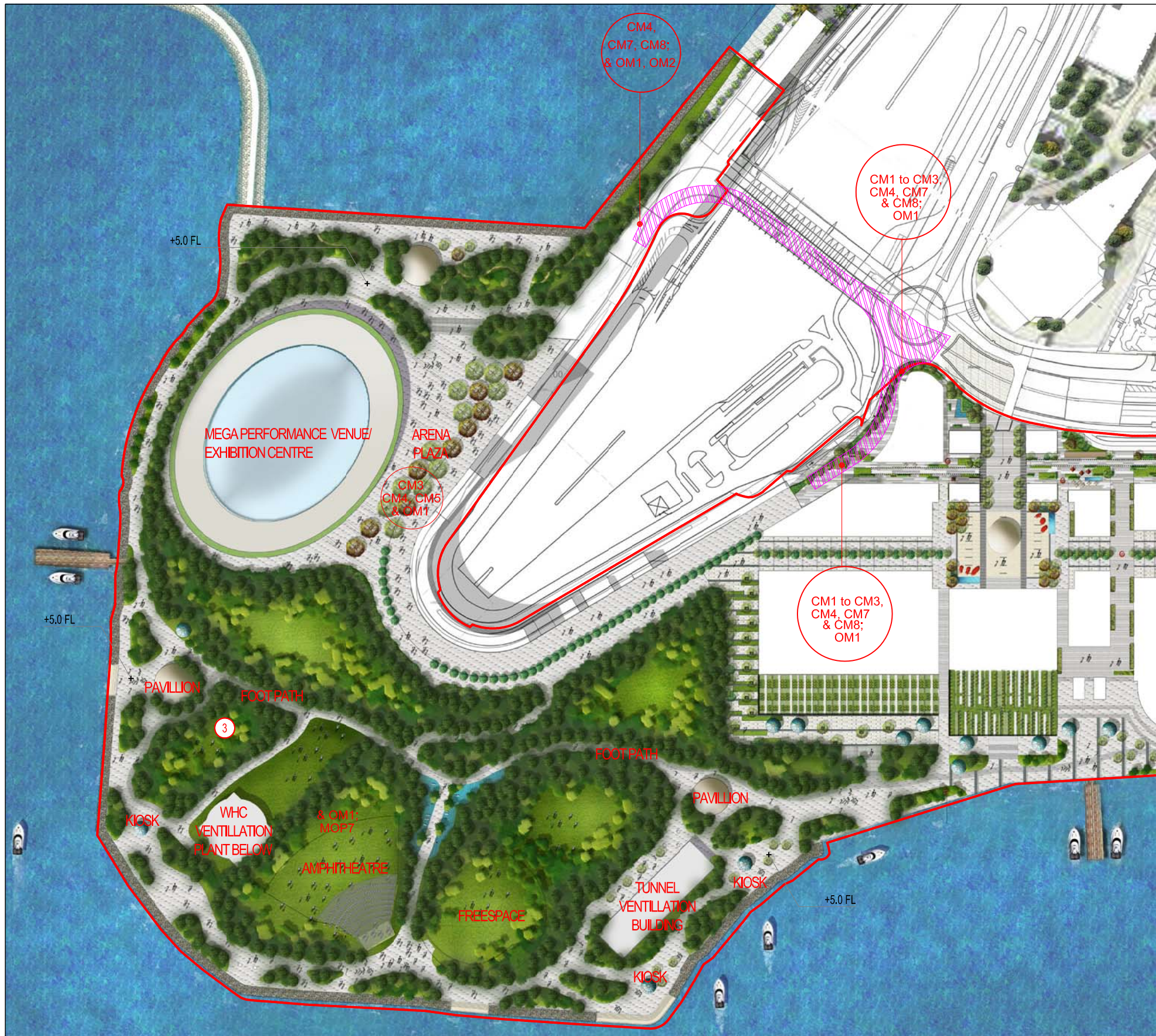
Project
PROJECT CONSULTANCY STUDY FOR WEST KOWLOON CULTURAL DISTRICT DEVELOPMENT PLAN

Title
PROPOSED LANDSCAPE CONCEPT PLAN

Designed		Eng check	
Drawn		Coordination	
Dwg check		Approved	
Scale at A3 NTS	Status	Rev	

Drawing Number
Figure 15.10.15

Remark: All Piers and Arts Pontoons should be subject to PHO and relevant Government Departments Agreement
備註: 所有碼頭及藝術浮橋有待<保護海港條例>及有關政府部門同意。
* Reference Materials For DP Submission. *用作提交發展圖則之參考資料。



PARK PLAN
 SCALE 1:3000M @A3
 1:3000 SCALE BAR

Remark: All Piers and Arts Pontoons should be subject to PHO and relevant Government Departments Agreement
 備註: 所有碼頭及藝術浮橋有待<保護海港條例>及有關政府部門同意。
 * Reference Materials For DP Submission. *用作提交發展圖則之參考資料。

© Mott MacDonald Hong Kong Limited
 This document should not be relied on or used in circumstances other than those for which it was originally prepared and for which Mott MacDonald Hong Kong Limited was commissioned. Mott MacDonald Limited accepts no responsibility for this document to any other party other than the person by whom it was commissioned.

- LIST OF LANDSCAPE MITIGATION MEASURES:**
- CM1: TREES SHOULD BE RETAINED IN SITU AS FAR AS POSSIBLE. SHOULD TREE REMOVAL BE UNAVOIDABLE, TREE WILL BE TRANSPLANTED OR FELLED.
 - CM2: COMPENSATORY TREE PLANTING
 - CM3: BUFFER TREES FOR SCREENING PURPOSES TO SOFTEN THE HARD ARCHITECTURAL AND ENGINEERING STRUCTURES AND FACILITIES.
 - CM4: SOFTSCAPE TREATMENTS SUCH AS VERTICAL GREEN WALL PANEL /PLANTING OF CLIMBING AND/OR WEEPING PLANTS, ETC, TO MAXIMIZE THE GREEN COVERAGE AND SOFTEN THE HARD ARCHITECTURAL AND ENGINEERING STRUCTURES AND FACILITIES.
 - CM7: STRUCTURE, ORNAMENTAL PLANTING SHALL BE PROVIDED ALONG AMENITY STRIPS TO ENHANCE THE LANDSCAPE QUALITY.
 - CM8: LANDSCAPE DESIGN SHALL BE INCORPORATED TO ARCHITECTURAL AND ENGINEERING STRUCTURES IN ORDER TO PROVIDE AESTHETICALLY PLEASING DESIGNS.
 - OM1: PROVIDE PROPER PLANTING MAINTENANCE
 - OM2: PROVISION OF OPEN SPACE IN VARIOUS FORMS AND AT DIFFERENT LEVELS ON OR ABOVE GROUND, INCLUDING PARK, WATERFRONT PROMENADE, PIAZZAS AND TERRACE GARDEN AND ASSOCIATED GREEN CONNECTIONS FOR PUBLIC ENJOYMENT.



KEY PLAN 1:25,000M @A3

- LEGEND**
- SCHEDULE 2 DESIGNATED PROJECT - AUSTIN ROAD FLYOVER
 - SCHEDULE 3 DESIGNATED PROJECT BOUNDARY

Rev	Date	Drawn	Description	Ch'k'd	App'd
Client					

WEST KOWLOON CULTURAL DISTRICT AUTHORITY

Mott MacDonald
 20/F Two Landmark East
 100 How Ming Street
 Kowloon, Kowloon
 Hong Kong
 T +852 2878 5157
 F +852 2871 1823
 W www.mottmac.com.hk

ARTEC | IMG Artists | Lord
 TFP | FARRELLS | G H K
 create thinking positive solutions | magnum estate limited | MVA
 DONNELL | LD ASIA | BMT

Project
PROJECT CONSULTANCY STUDY FOR WEST KOWLOON CULTURAL DISTRICT DEVELOPMENT PLAN

Title
LANDSCAPE CONCEPT PLAN FOR PARK

Designed		Eng check	
Drawn		Coordination	
Dwg check		Approved	
Scale at AS SHOWN	Status	Rev	

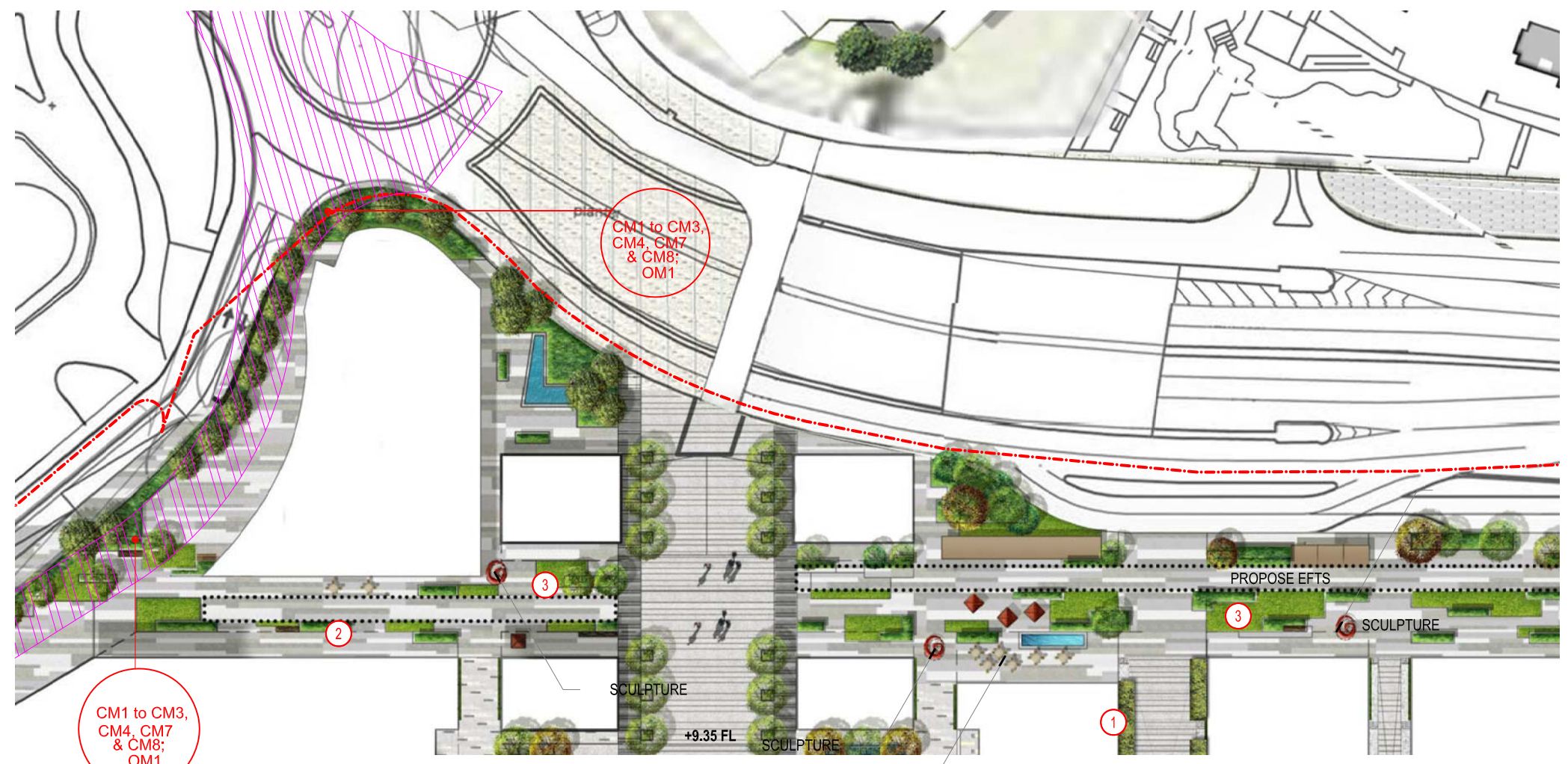
Drawing Number
Figure 15.10.16

INDICATIVE 只供參考

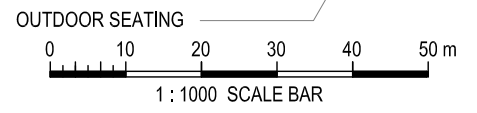


KEYPLAN 1:25,000M @A3

- LEGEND**
- SCHEDULE 2 DESIGNATED PROJECT - AUSTIN ROAD FLYOVER
 - SCHEDULE 3 DESIGNATED PROJECT BOUNDARY



AUSTIN ROAD WEST PLAN SCALE 1:1000M @A3



- LIST OF LANDSCAPE MITIGATION MEASURES:**
- CM1: TREES SHOULD BE RETAINED IN SITU AS FAR AS POSSIBLE, SHOULD TREE REMOVAL BE UNAVOIDABLE, TREE WILL BE TRANSPLANTED OR FELLED.
 - CM2: COMPENSATORY TREE PLANTING
 - CM3: BUFFER TREES FOR SCREENING PURPOSES TO SOFTEN THE HARD ARCHITECTURAL AND ENGINEERING STRUCTURES AND FACILITIES.
 - CM4: SOFTSCAPE TREATMENTS SUCH AS VERTICAL GREEN WALL PANEL /PLANTING OF CLIMBING AND/OR WEEPING PLANTS, ETC, TO MAXIMIZE THE GREEN COVERAGE AND SOFTEN THE HARD ARCHITECTURAL AND ENGINEERING STRUCTURES AND FACILITIES.
 - CM7: STRUCTURE, ORNAMENTAL PLANTING SHALL BE PROVIDED ALONG AMENITY STRIPS TO ENHANCE THE LANDSCAPE QUALITY.
 - CM8: LANDSCAPE DESIGN SHALL BE INCORPORATED TO ARCHITECTURAL AND ENGINEERING STRUCTURES IN ORDER TO PROVIDE AESTHETICALLY PLEASING DESIGNS.
 - OM1: PROVIDE PROPER PLANTING MAINTENANCE
 - OM2: PROVISION OF OPEN SPACE IN VARIOUS FORMS AND AT DIFFERENT LEVELS ON OR ABOVE GROUND, INCLUDING PARK, WATERFRONT PROMENADE, PIAZZAS AND TERRACE GARDEN AND ASSOCIATED GREEN CONNECTIONS FOR PUBLIC ENJOYMENT.

Rev	Date	Drawn	Description	Ch'k'd	App'd
-----	------	-------	-------------	--------	-------

Client
WEST KOWLOON CULTURAL DISTRICT AUTHORITY

20/F Two Landmark East
100 How Ming Street
Kwun Tong, Kowloon
Hong Kong
T +852 2878 5757
F +852 2871 1823
W www.mottmac.com.hk

Project
PROJECT CONSULTANCY STUDY FOR WEST KOWLOON CULTURAL DISTRICT DEVELOPMENT PLAN

Title
LANDSCAPE CONCEPT FOR AUSTIN ROAD WEST SECTION A - A

Designed		Eng check	
Drawn		Coordination	
Dwg check		Approved	
Scale at A3 AS SHOWN	Status	Rev	

Drawing Number
Figure 15.10.17

Remark: All Piers and Arts Pontoons should be subject to PHO and relevant Government Departments Agreement
備註: 所有碼頭及藝術浮橋有待<保護海港條例>及有關政府部門同意。
* Reference Materials For DP Submission. *用作提交發展圖則之參考資料。

© Mott MacDonald Hong Kong Limited
This document should not be relied on or used in circumstances other than those for which it was originally prepared and for which Mott MacDonald Hong Kong Limited was commissioned. Mott MacDonald Limited accepts no responsibility for this document to any other party other than the person by whom it was commissioned.

INDICATIVE 只供參考