



LR1.7 Temporary Open Space along the Waterfront Promenade within the site boundary Photo 1



LR1.7 Temporary Open Space along the Waterfront Promenade within the site boundary Photo 2



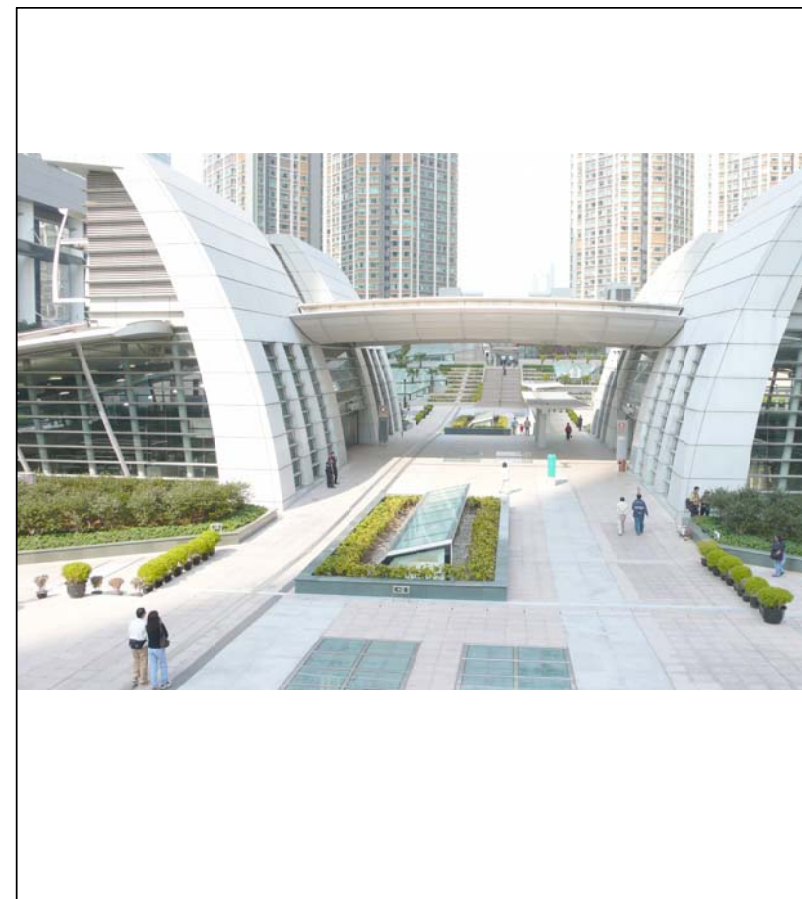
LR1.7 Temporary Open Space along the Waterfront Promenade within the site boundary Photo 3



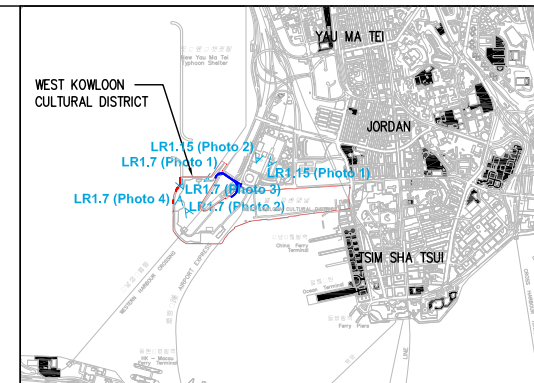
LR1.7 Temporary Open Space along the Waterfront Promenade within the site boundary Photo 4



LR1.15 Public Open Space at the Kowloon Station Photo 1



LR1.15 Public Open Space at the podium of Kowloon Station Photo 2



KEY PLAN

Rev	Date	Drawn	Description	Ch'k'd	App'd

Client

WEST KOWLOON CULTURAL DISTRICT AUTHORITY

20/F Two Landmark East
120 Hoi Ming Street
Kowloon Tong, Kowloon
Hong Kong
T +852 2828 6767
F +852 2827 1823
W www.mottmac.com.hk

Project

PROJECT CONSULTANCY STUDY FOR WEST KOWLOON CULTURAL DISTRICT DEVELOPMENT PLAN

Title

BASELINE LANDSCAPE RESOURCES PHOTO RECORD (SHEET 1 OF 6)

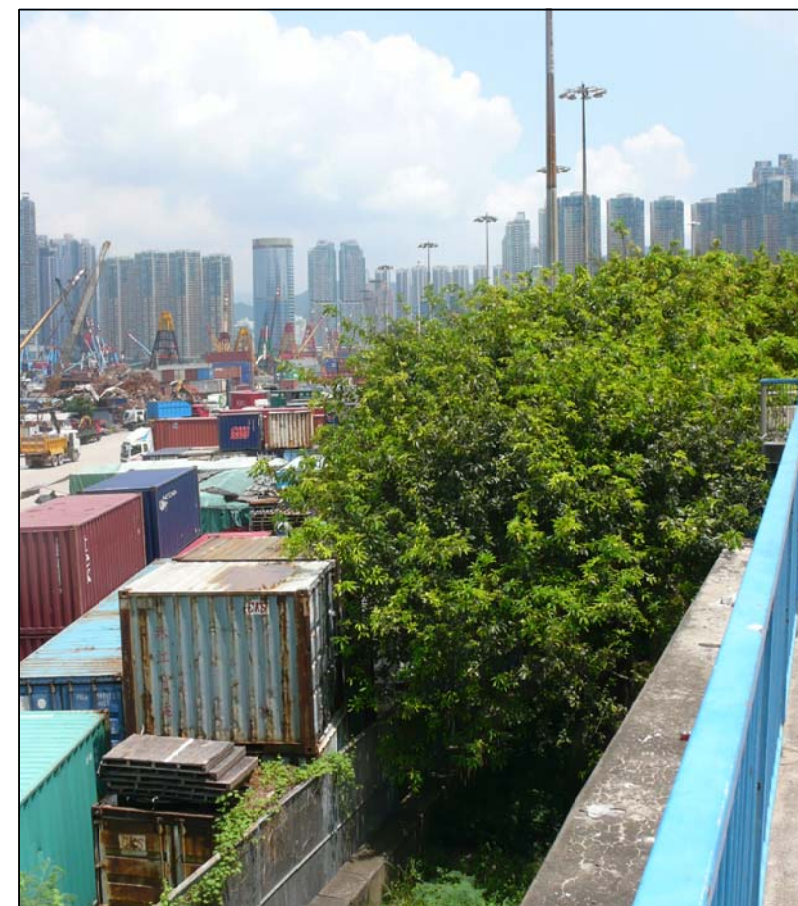
Designed		Eng check	
Drawn		Coordination	
Dwg check		Approved	
Scale at A3 NTS	Status	Rev	
Drawing Number Figure 15.10.3a			



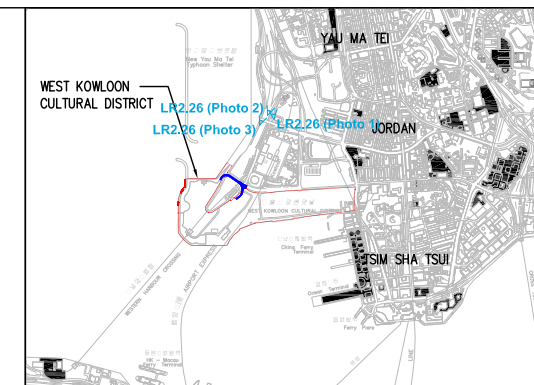
LR2.26 Trees along West Kowloon Highway
Photo 1



LR2.26 Trees along West Kowloon Highway
Photo 2



LR2.26 Trees along West Kowloon Highway
Photo 3



KEY PLAN

Rev	Date	Drawn	Description	Chk'd	App'd

Client

WEST KOWLOON
CULTURAL DISTRICT AUTHORITY



20/F Two Landmark, East
100 Hoi Ming Street
Kwun Tong, Kowloon
Hong Kong
T +862 2828 5757
F +862 2827 1823
W www.mottmac.com.hk



Project
**PROJECT CONSULTANCY STUDY FOR
WEST KOWLOON CULTURAL DISTRICT
DEVELOPMENT PLAN**

Title
**BASELINE LANDSCAPE RESOURCES
PHOTO RECORD (SHEET 2 OF 6)**

Designed		Eng check	
Drawn		Coordination	
Dwg check		Approved	
Scale at A3 NTS	Status	Rev	

Drawing Number
Figure 15.10.3b



LR2.27 Amenity Planting within the private development at the Kowloon Station
Photo 1



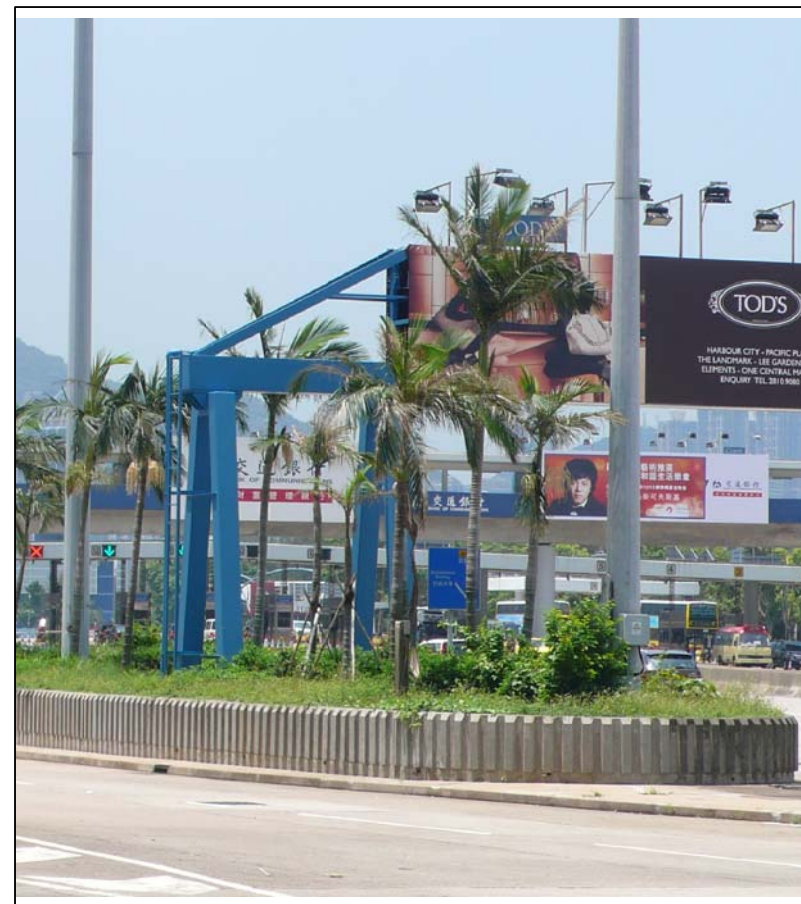
LR2.27 Amenity Planting within the private development at the Kowloon Station
Photo 2



LR2.27 Amenity Planting within the private development at the Kowloon Station
Photo 3



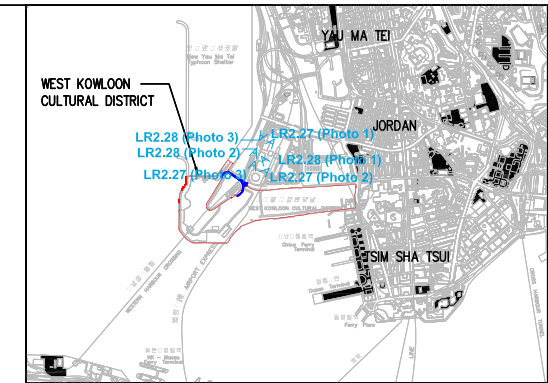
LR2.28 Roadside Plantation along Western Harbour Crossing Bus Stop near Element
Photo 1



LR2.28 Roadside Plantation along Western Harbour Crossing Bus Stop near Element
Photo 2



LR2.28 Roadside Plantation along Western Harbour Crossing Bus Stop near Element
Photo 3



KEY PLAN

Rev	Date	Drawn	Description	Ch'k'd	App'd

Client
WEST KOWLOON CULTURAL DISTRICT AUTHORITY

Mott MacDonald
20/F Two Landmark East
100 Hoi Ming Street
Kwun Tong, Kowloon
Hong Kong
T +852 2828 6757
F +852 2827 1823
W www.mottmac.com.hk

ARTEC IMG Artists Lord
TFP | FARRELLS G | H | K
creative thinking positive solutions MAVA
DONNELL
LD ASIA BMT

Project
PROJECT CONSULTANCY STUDY FOR WEST KOWLOON CULTURAL DISTRICT DEVELOPMENT PLAN

Title
BASELINE LANDSCAPE RESOURCES PHOTO RECORD (SHEET 3 OF 6)

Designed		Eng check	
Drawn		Coordination	
Dwg check		Approved	
Scale at A3 NTS	Status		Rev

Drawing Number
Figure 15.10.3c



LR2.29 Roadside Plantation along Austin Road West Photo 1



LR2.29 Roadside Plantation along Austin Road West Photo 2



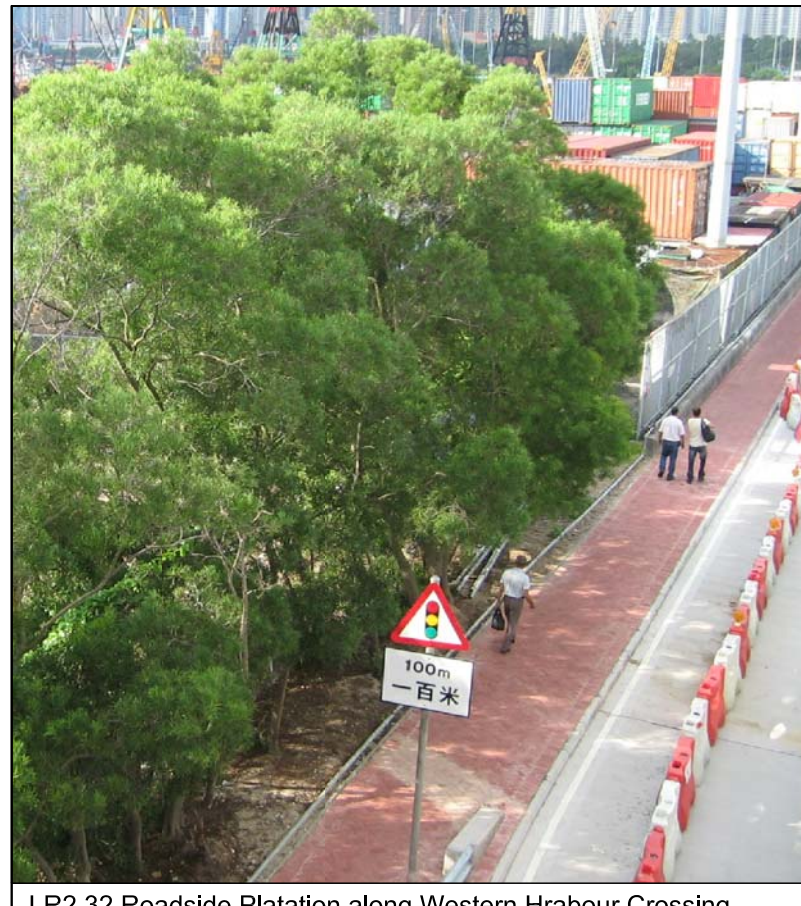
LR2.29 Roadside Plantation along Austin Road West Photo 3



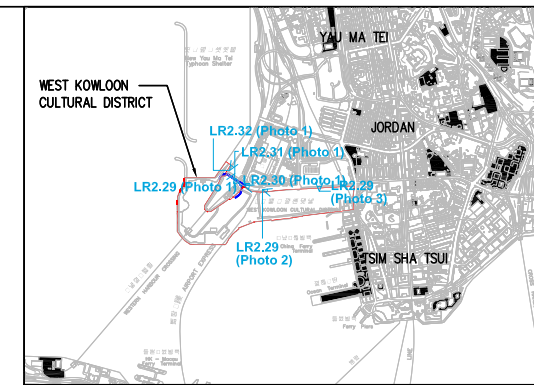
LR2.30 Roadside Plantation next to Western Harbour Tunnel Administration Photo 1



LR2.31 Tree Buffering Western Harbour Tunnel Entrance Photo 1



LR2.32 Roadside Plation along Western Hrabour Crossing Bus Stop next to New Yau Ma Tei Typhoon Shelter Photo 1



KEY PLAN

Rev	Date	Drawn	Description	Ch'k'd	App'd

Client

WEST KOWLOON CULTURAL DISTRICT AUTHORITY



20/F Two Landmark East
100 Hoi Ming Street
Kowloon, Kowloon
Hong Kong
T +852 2828 6757
F +852 2827 1823
W www.mottmac.com.hk



Project
PROJECT CONSULTANCY STUDY FOR WEST KOWLOON CULTURAL DISTRICT DEVELOPMENT PLAN

Title
BASELINE LANDSCAPE RESOURCES PHOTO RECORD (SHEET 4 OF 6)

Designed		Eng check	
Drawn		Coordination	
Dwg check		Approved	
Scale at A3 NTS	Status	Rev	

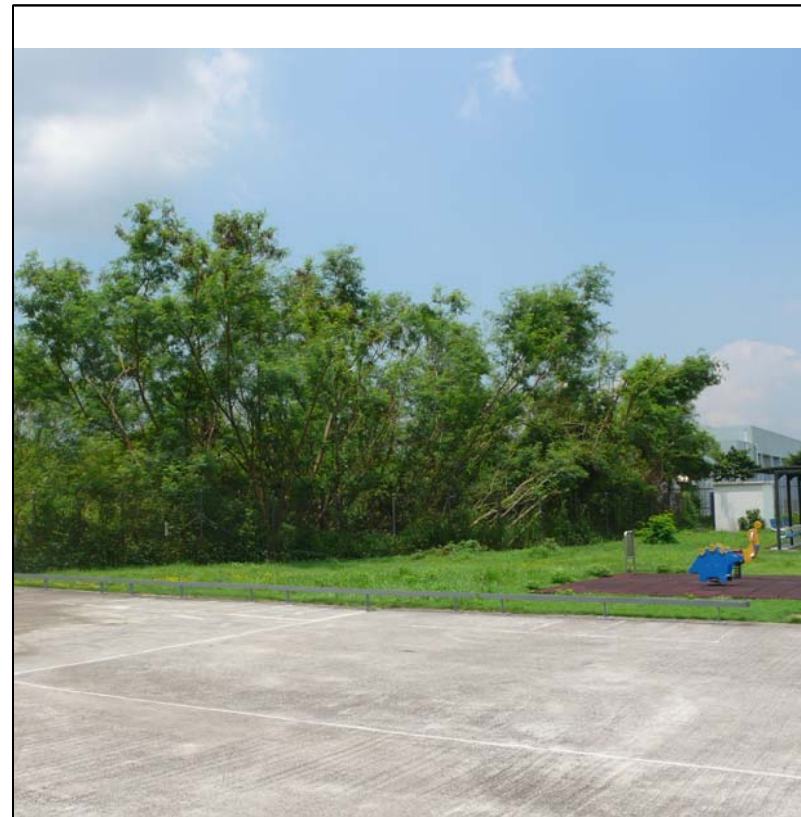
Drawing Number
Figure 15.10.3d



LR2.33 Trees along New Yau Ma Tei Typhoon Shelter Pier Photo 1



LR2.34 Amenity Planting within Salt Water Pumping Station Photo 1



LR2.34 Amenity Planting within Salt Water Pumping Station Photo 2



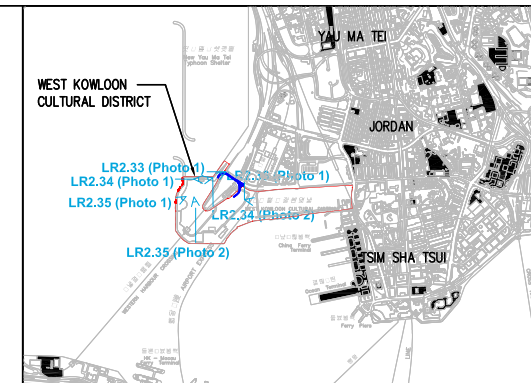
LR2.35 Tree Cluster in the Western Part within the Site Boundary Photo 1



LR2.35 Tree Cluster in the Western Part within the Site Boundary Photo 2



LR2.36 Tree Cluster in the Eastern Part within the Site Boundary Photo 1



KEY PLAN

Rev	Date	Drawn	Description	Ch'k'd	App'd

Client

WEST KOWLOON CULTURAL DISTRICT AUTHORITY



20/F Two Landmark East
100 How Ming Street
Kwun Tong, Kowloon
Hong Kong
T +852 2828 5757
F +852 2827 1828
W www.mottmac.com.hk



Project
PROJECT CONSULTANCY STUDY FOR WEST KOWLOON CULTURAL DISTRICT DEVELOPMENT PLAN

Title
BASELINE LANDSCAPE RESOURCES PHOTO RECORD (SHEET 5 OF 6)

Designed		Eng check	
Drawn		Coordination	
Dwg check		Approved	
Scale at A3 NTS	Status	Rev	

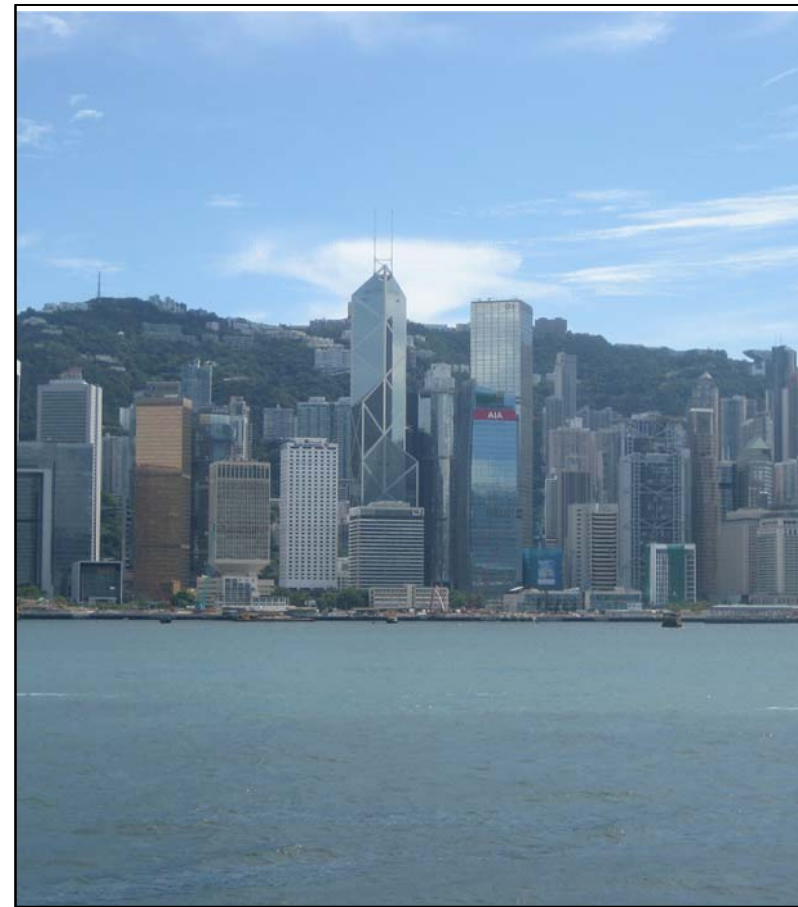
Drawing Number
Figure 15.10.3e



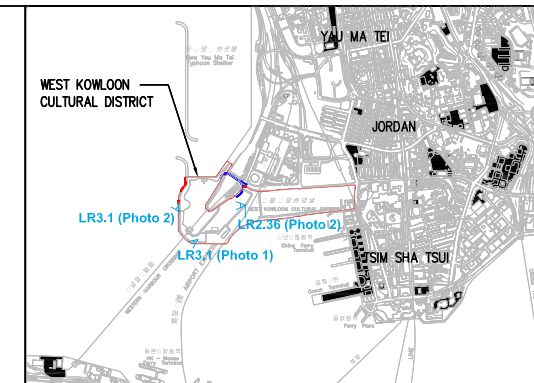
LR2.36 Tree Cluster in the Eastern Part within the Site Boundary
Photo 2



LR3.1 Victoria Harbour
Photo 1



LR3.1 Victoria Harbour
Photo 2



KEY PLAN

--	--	--	--	--	--

Rev	Date	Drawn	Description	Ch'k'd	App'd

Client

WEST KOWLOON
CULTURAL DISTRICT AUTHORITY



20/F Two Landmark East
100 How Ming Street
Kowloon Tong, Kowloon
Hong Kong
T +852 2828 5757
F +852 2827 1823
www.mottmac.com.hk



Project
PROJECT CONSULTANCY STUDY FOR
WEST KOWLOON CULTURAL DISTRICT
DEVELOPMENT PLAN

Title
BASELINE LANDSCAPE RESOURCES
PHOTO RECORD (SHEET 6 OF 6)

Designed		Eng check	
Drawn		Coordination	
Dwg check		Approved	
Scale at A3 NTS	Status	Rev	

Drawing Number
Figure 15.10.3f