



Photo VC01 (LCA01)  
West Kowloon Cultural District Landscape Character Area



Photo VC02 (LCA01)  
West Kowloon Cultural District Landscape Character Area

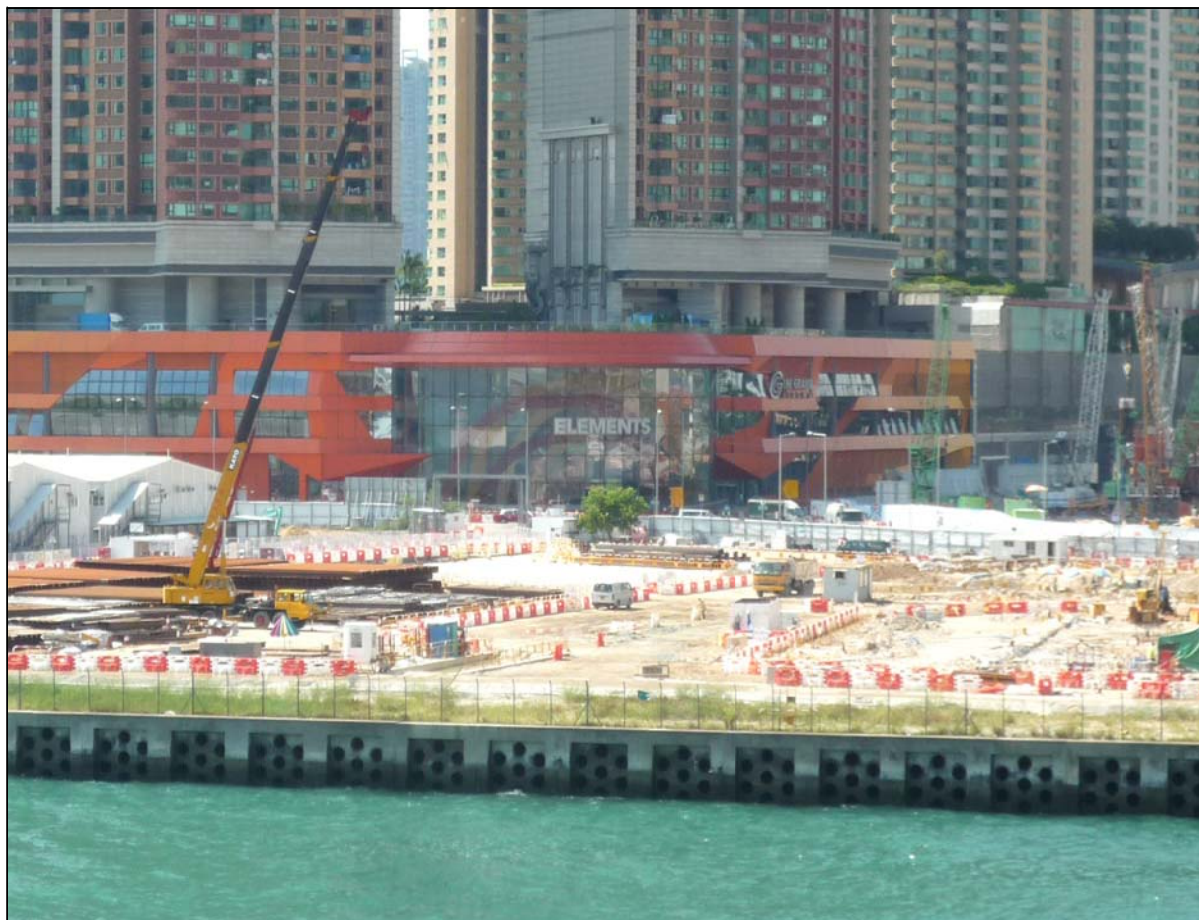
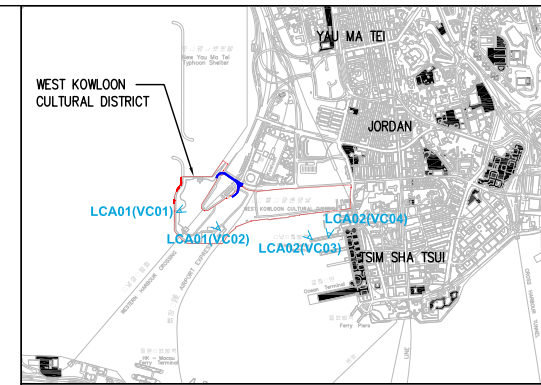


Photo VC03 (LCA02)  
West Kowloon Cultural District Construction Area



Photo VC04 (LCA02)  
West Kowloon Cultural District Construction Area



KEY PLAN

Rev	Date	Drawn	Description	Ch'k'd	App'd

Client

WEST KOWLOON  
CULTURAL DISTRICT AUTHORITY



20/F Two Landmark East  
100 Hoi Ming Street  
Kwun Tong, Kowloon  
Hong Kong  
T +852 2828 8157  
F +852 2827 1823  
W www.mottmac.com.hk



Project  
PROJECT CONSULTANCY STUDY FOR  
WEST KOWLOON CULTURAL DISTRICT  
DEVELOPMENT PLAN

Title  
BASELINE LANDSCAPE CHARACTER  
AREA PHOTO RECORD  
(SHEET 1 OF 6)

Designed		Eng check	
Drawn		Coordination	
Dwg check		Approved	
Scale at A3 NTS	Status	Rev	

Drawing Number  
Figure 15.10.7a





Photo VC05 (LCA03)  
West Kowloon Cultural District Temporary Waterfront Promenade



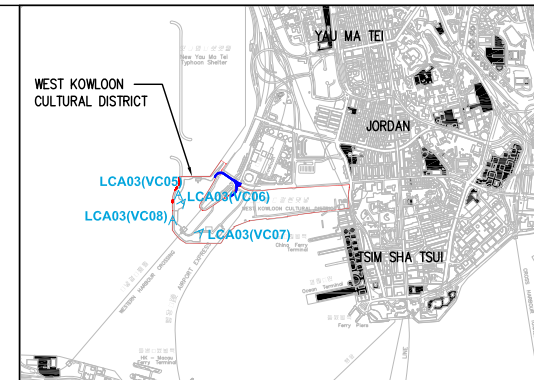
Photo VC06 (LCA03)  
West Kowloon Cultural District Temporary Waterfront Promenade



Photo VC07 (LCA03)  
West Kowloon Cultural District Temporary Waterfront Promenade



Photo VC08 (LCA03)  
West Kowloon Cultural District Temporary Waterfront Promenade



KEY PLAN

Rev	Date	Drawn	Description	Ch'kd	App'd

Client

WEST KOWLOON  
CULTURAL DISTRICT AUTHORITY



20/F Two Landmark East  
100 Hoi Ming Street  
Kwun Tong, Kowloon  
Hong Kong  
T +852 2828 5757  
F +852 2827 1823  
W www.mottmac.com.hk



Project  
PROJECT CONSULTANCY STUDY FOR  
WEST KOWLOON CULTURAL DISTRICT  
DEVELOPMENT PLAN

Title  
BASELINE LANDSCAPE CHARACTER  
AREA PHOTO RECORD  
(SHEET 2 OF 6)

Designed		Eng check	
Drawn		Coordination	
Dwg check		Approved	
Scale at A3 NTS	Status	Rev	

Drawing Number  
Figure 15.10.7b





Photo VC09 (LCA04)  
New Yau Ma Tei Typhoon Shelter Landscape



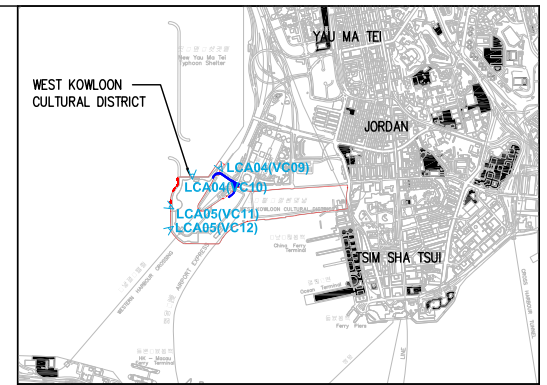
Photo VC10 (LCA04)  
New Yau Ma Tei Typhoon Shelter Landscape



Photo VC11 (LCA05)  
Victoria Harbour Inshore Water Landscape



Photo VC12 (LCA05)  
Victoria Harbour Inshore Water Landscape



KEY PLAN

Rev	Date	Drawn	Description	Ch'k'd	App'd

Client  
**WEST KOWLOON CULTURAL DISTRICT AUTHORITY**

**Mott MacDonald**  
20/F Two Landmark East  
102 Hoi Ming Street  
Kwun Tong, Kowloon  
Hong Kong  
T +852 2828 6767  
F +852 2827 1823  
W www.mottmac.com.hk

**ARTEC** **IMG Artists** **Lord**  
**TFP | FARRELLS** **G | H | K**  
**creative thinking positive solutions** **orthosis limited** **MVA**  
**DONNELL**  
**LD ASIA** **BMT**

Project  
**PROJECT CONSULTANCY STUDY FOR WEST KOWLOON CULTURAL DISTRICT DEVELOPMENT PLAN**

Title  
**BASELINE LANDSCAPE CHARACTER AREA PHOTO RECORD (SHEET 3 OF 6)**

Designed		Eng check	
Drawn		Coordination	
Dwg check		Approved	
Scale at A3 NTS	Status	Rev	

Drawing Number  
Figure 15.10.7c





Photo VC13 (LCA06)  
Victoria Harbour Strait Landscape



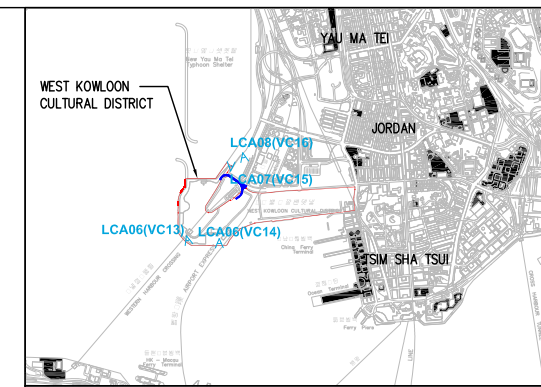
Photo VC14 (LCA06)  
Victoria Harbour Strait Landscape



Photo VC15 (LCA07)  
New Yau Ma Tei Container Terminal Landscape



Photo VC16 (LCA08)  
Western Harbour Crossing Toll Gate Landscape



KEY PLAN

Rev	Date	Drawn	Description	Ch'kd	App'd

Client  
**WEST KOWLOON  
CULTURAL DISTRICT AUTHORITY**

**Mott MacDonald**  
20/F Two Landmark, East  
100 Hoi Ming Street,  
Kwun Tong, Kowloon  
Hong Kong  
T +852 2828 6767  
F +852 2827 1823  
W www.mottmac.com.hk



Project  
**PROJECT CONSULTANCY STUDY FOR  
WEST KOWLOON CULTURAL DISTRICT  
DEVELOPMENT PLAN**

Title  
**BASELINE LANDSCAPE CHARACTER  
AREA PHOTO RECORD  
(SHEET 4 OF 6)**

Designed		Eng check	
Drawn		Coordination	
Dwg check		Approved	
Scale at A3 NTS	Status		Rev

Drawing Number  
**Figure 15.10.7d**





Photo VC17 (LCA08)  
Western Harbour Crossing Toll Gate Landscape



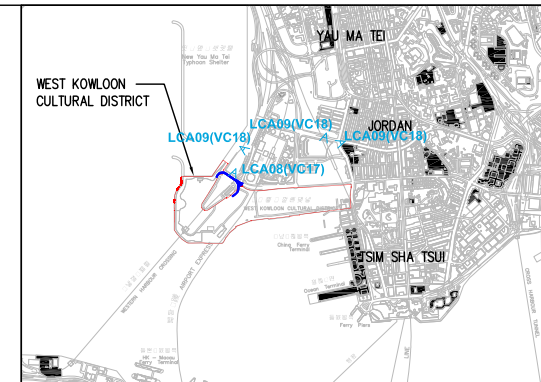
Photo VC17A (LCA09)  
Tsim Sha Tsui Late 20C/Early 21C Commercial/Residential Complex Landscape



Photo VC18 (LCA09)  
Tsim Sha Tsui Late 20C/Early 21C Commercial/Residential Complex Landscape



Photo VC19 (LCA10)  
Guangzhou-Shenzhen-Hong Kong Express Rail Link Terminus Construction Site & Austin Station



KEY PLAN

Rev	Date	Drawn	Description	Ch'kd	App'd

Client

WEST KOWLOON  
CULTURAL DISTRICT AUTHORITY



20/F Two Landmark East  
100 How Ming Street  
Kwun Tong, Kowloon  
Hong Kong  
T +852 2828 5757  
F +852 2827 1823  
W www.mottmac.com.hk



Project  
PROJECT CONSULTANCY STUDY FOR  
WEST KOWLOON CULTURAL DISTRICT  
DEVELOPMENT PLAN

Title  
BASELINE LANDSCAPE CHARACTER  
AREA PHOTO RECORD  
(SHEET 5 OF 6)

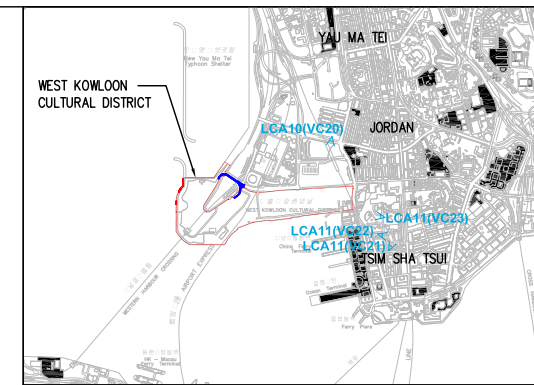
Designed		Eng check	
Drawn		Coordination	
Dwg check		Approved	
Scale at A3 NTS	Status		Rev

Drawing Number  
Figure 15.10.7e





Photo VC20 (LCA10)  
Guangzhou-Shenzhen-Hong Kong Express Rail Link Terminus Construction Site & Austin Station



KEY PLAN

Rev	Date	Drawn	Description	Ch'k'd	App'd

Client

WEST KOWLOON  
CULTURAL DISTRICT AUTHORITY



20/F Two Landmark East  
100 How Ming Street  
Kowloon, Kowloon  
Hong Kong  
T +852 2878 5157  
F +852 2827 1823  
W www.motimac.com.hk



Project

PROJECT CONSULTANCY STUDY FOR  
WEST KOWLOON CULTURAL DISTRICT  
DEVELOPMENT PLAN

Title

BASELINE LANDSCAPE CHARACTER  
AREA PHOTO RECORD  
(SHEET 6 OF 6)

Designed		Eng check	
Drawn		Coordination	
Dwg check		Approved	
Scale at A3 NTS	Status	Rev	

Drawing Number  
Figure 15.10.7f