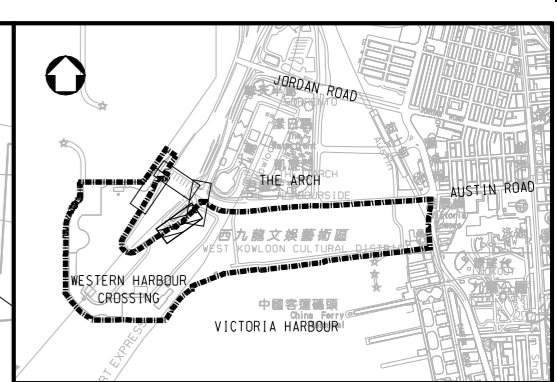


**ROAD ALIGNMENT PLAN**  
SCALE 1:250



**KEY PLAN**  
SCALE 1:15000

- NOTES:**
1. ALL DIMENSIONS ARE IN MILLIMETRES UNLESS NOTED OTHERWISE.
  2. ALL LEVELS ARE IN METRES TO PRINCIPAL DATUM (PD) UNLESS NOTED OTHERWISE.
  3. ALL CO-ORDINATES REFER TO HONG KONG (1980) METRIC GRID CO-ORDINATES SYSTEM.

**LEGEND:**

--- SITE BOUNDARY

Rev	Date	Drawn	Description	Ch'kd	App'd
P2	MAY 13	MING	GENERAL REVISION	EY	AFK
P1	JUN 12	PL	FIRST ISSUE	OW	SB

Client  
**WEST KOWLOON CULTURAL DISTRICT AUTHORITY**

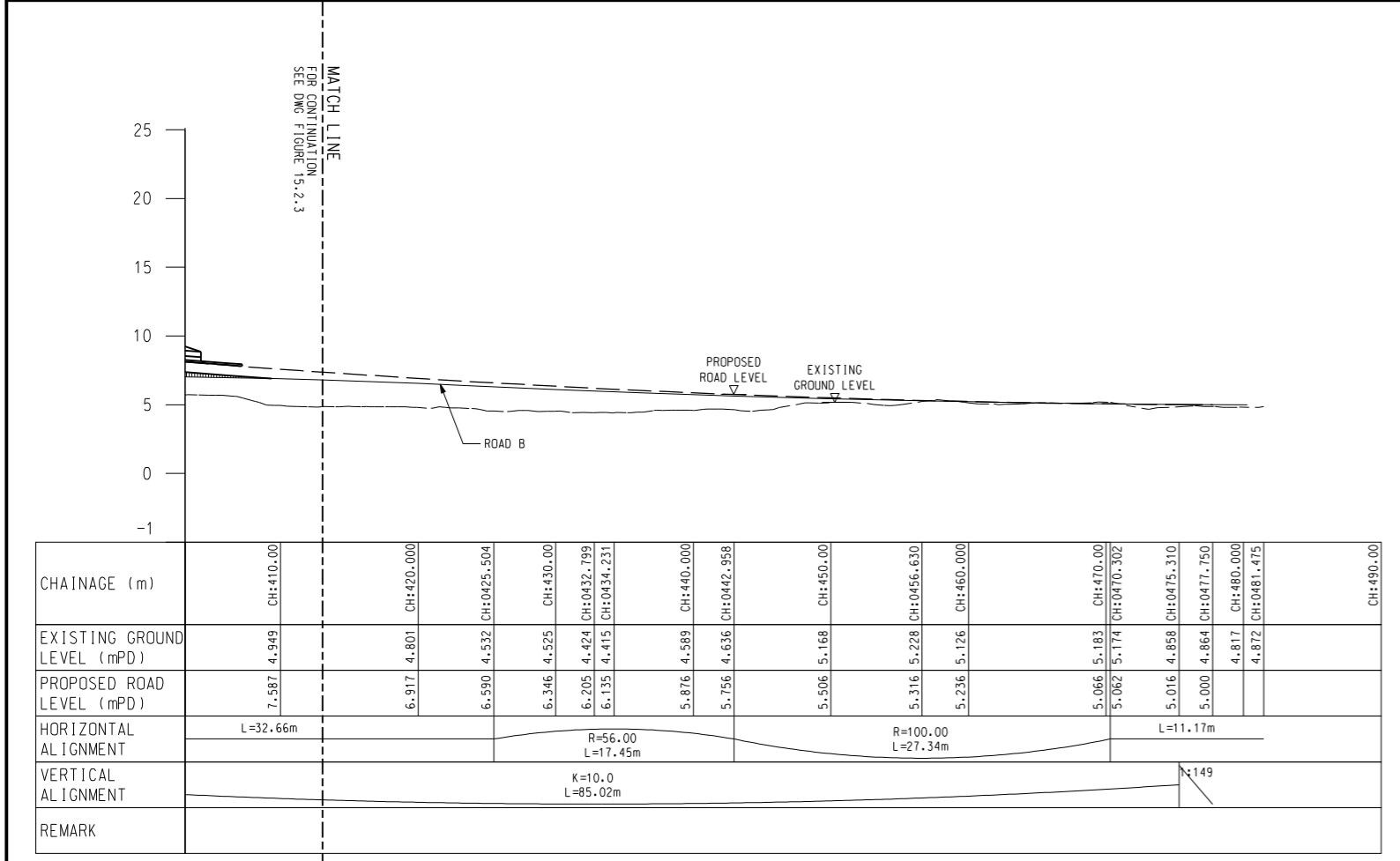
20F Two Landmark East  
100 How Ming Street  
Kowloon  
Hong Kong  
☎ +852 2828 6767  
☎ +852 2827 1623  
www.mottmac.com.hk

Project  
**PROJECT CONSULTANCY STUDY FOR WEST KOWLOON CULTURAL DISTRICT DEVELOPMENT PLAN**

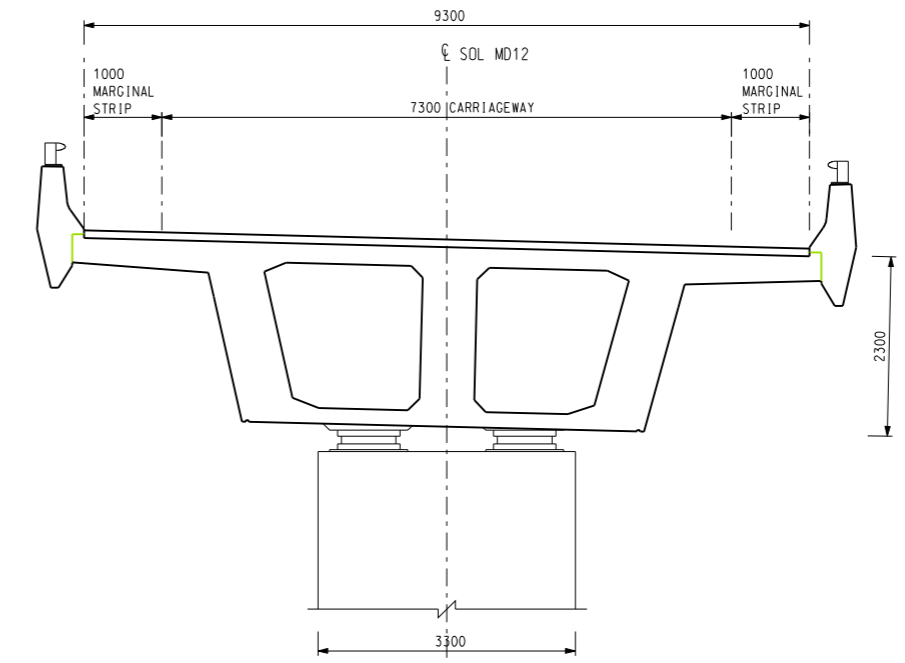
Title  
**PROPOSED AUSTIN ROAD FLYOVER PROFILE OF LAYOUT PLAN (SHEET 4 OF 4)**

Designed	JC	Eng check	OW
Drawn	LUN	Coordination	CC
Dwg check	OW	Approved	SB
Scale at A1	Status	Rev	
<b>AS SHOWN</b>	<b>PRE</b>	<b>P2</b>	

Drawing Number  
**FIGURE 15.2.4**

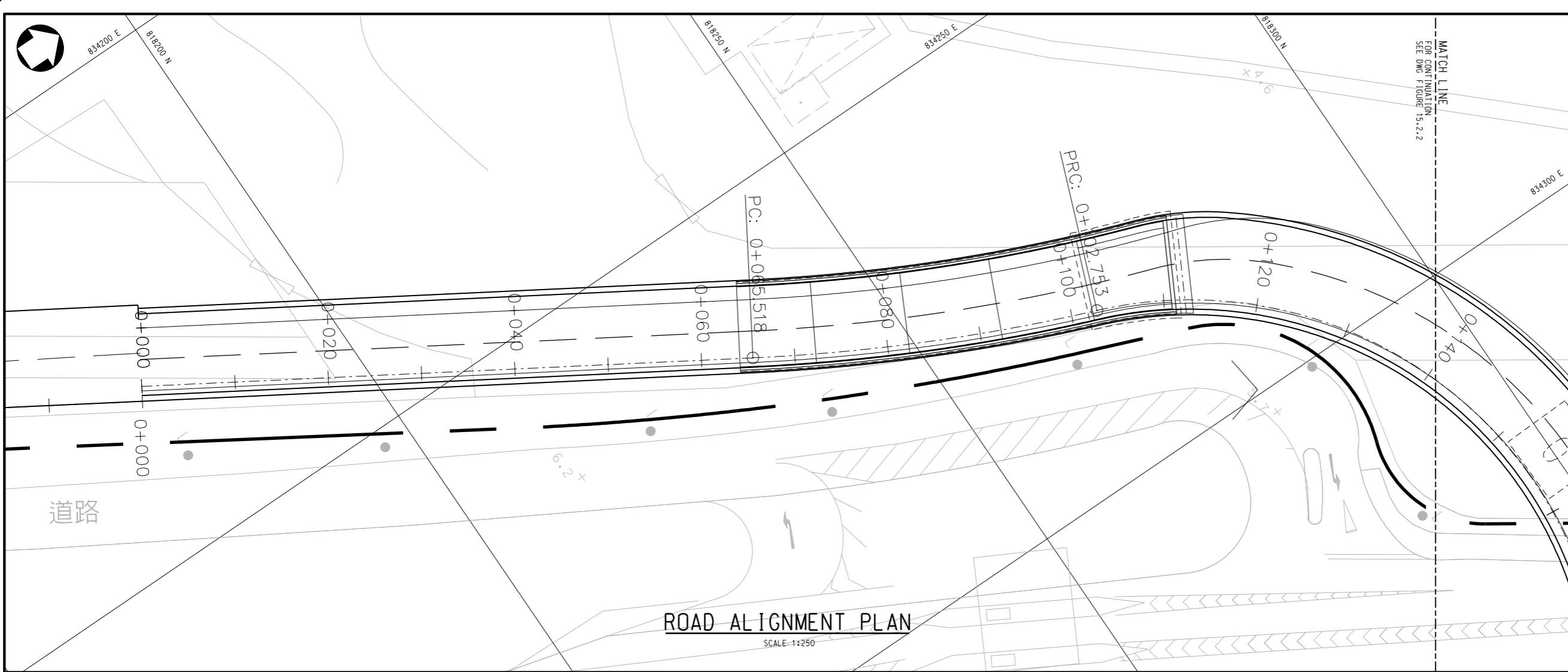


**ROAD PROFILE**  
SCALE 1:250

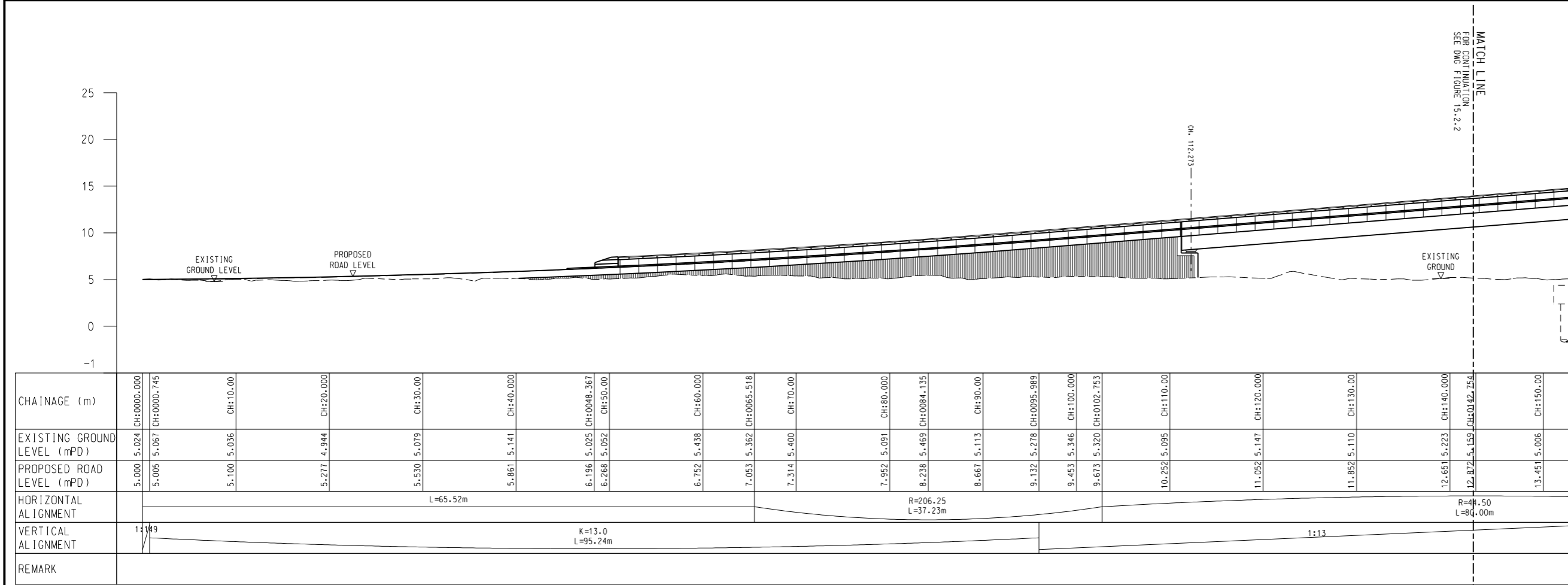


**TYPICAL SECTION**  
SCALE 1:50

CHAINAGE (m)	CH: 410.00	CH: 420.000	CH: 0425.504	CH: 430.00	CH: 0432.799	CH: 0434.231	CH: 440.000	CH: 0442.958	CH: 450.00	CH: 0456.630	CH: 460.000	CH: 470.00	CH: 0470.302	CH: 0475.310	CH: 0477.750	CH: 480.000	CH: 0481.475	CH: 490.00
EXISTING GROUND LEVEL (mPD)	7.587	4.949	4.801	4.532	4.525	4.424	4.415	4.589	4.636	5.168	5.228	5.174	5.183	4.858	4.864	4.817	4.872	
PROPOSED ROAD LEVEL (mPD)		7.587	6.917	6.590	6.346	6.205	6.135	5.876	5.756	5.506	5.316	5.236	5.066	5.016	5.000	4.817	4.872	
HORIZONTAL ALIGNMENT	L=32.66m		R=56.00 L=17.45m				R=100.00 L=27.34m				L=11.17m							
VERTICAL ALIGNMENT	K=10.0 L=85.02m																	
REMARK																		

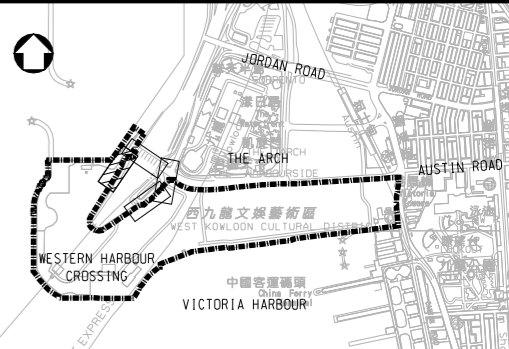


ROAD ALIGNMENT PLAN  
SCALE: 1:250



ROAD PROFILE  
SCALE: 1:250

CHAINAGE (m)	CH:0000.000	CH:0000.745	CH:10.00	CH:20.000	CH:30.00	CH:40.000	CH:50.00	CH:60.000	CH:70.00	CH:80.000	CH:90.00	CH:100.000	CH:110.00	CH:120.000	CH:130.00	CH:150.00	
EXISTING GROUND LEVEL (mPD)	5.000	5.024	5.036	4.944	5.079	5.141	5.025	5.438	5.362	5.091	5.469	5.113	5.278	5.147	5.110	5.006	
PROPOSED ROAD LEVEL (mPD)	5.005	5.067	5.100	5.277	5.530	5.861	6.268	6.752	7.053	7.314	7.952	8.238	8.667	9.132	9.453	10.252	
HORIZONTAL ALIGNMENT	L=65.52m						R=206.25 L=37.23m						R=41.50 L=80.00m				
VERTICAL ALIGNMENT	1:13																
REMARK																	



KEY PLAN  
SCALE: 1:15000

- NOTES:
- ALL DIMENSIONS ARE IN MILLIMETRES UNLESS NOTED OTHERWISE.
  - ALL LEVELS ARE IN METRES TO PRINCIPAL DATUM (PD) UNLESS NOTED OTHERWISE.
  - ALL CO-ORDINATES REFER TO HONG KONG (1980) METRIC GRID CO-ORDINATES SYSTEM.

LEGEND:

--- SITE BOUNDARY

Rev	Date	Drawn	Description	Ch'kd	App'd
P2	MAY 13	MING	GENERAL REVISION	EY	AFK
P1	JUN 12	PL	FIRST ISSUE	OW	SB

Client  
**WEST KOWLOON CULTURAL DISTRICT AUTHORITY**

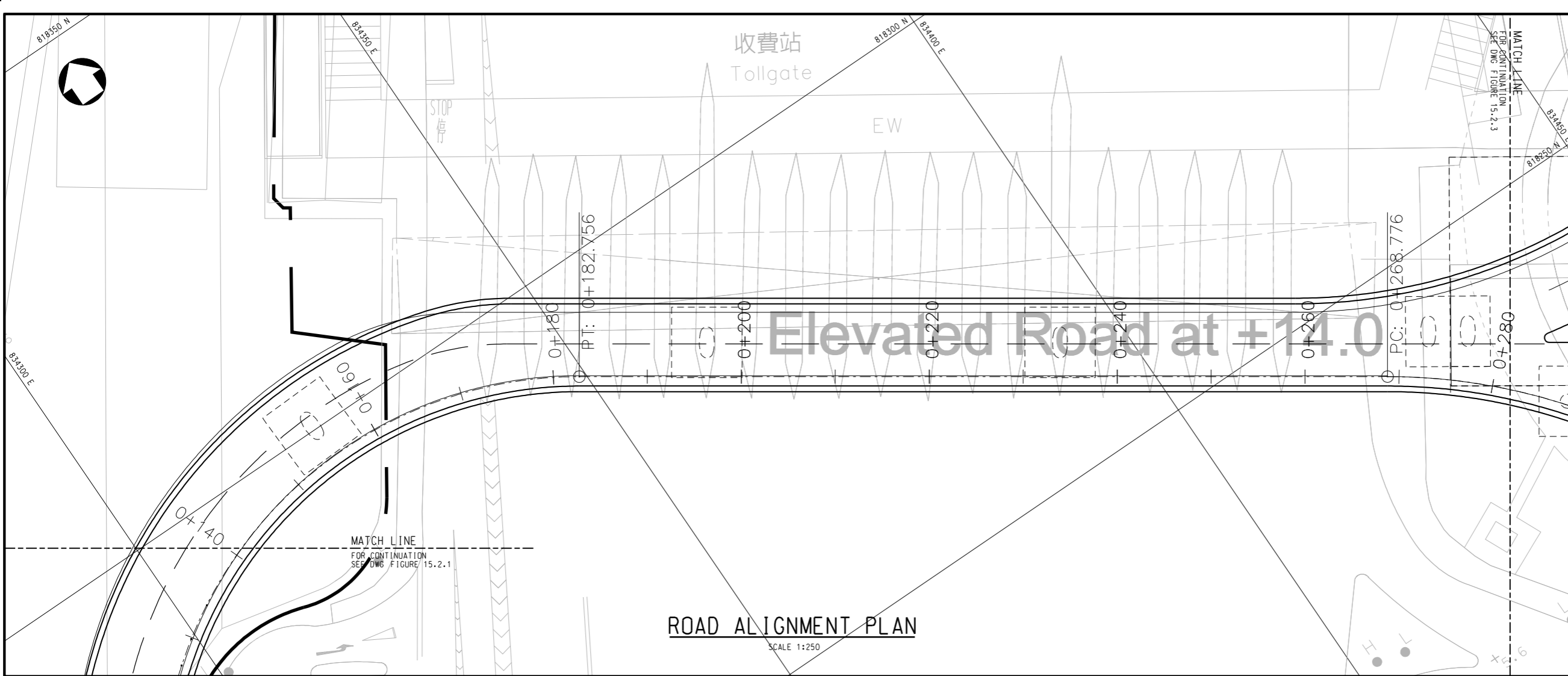
20/F Two Landmark East  
100 How Ming Street  
Kwun Tong, Kowloon  
Hong Kong  
☎ +852 2828 6757  
☎ +852 2827 1623  
www.mottmac.com.hk

Project  
**PROJECT CONSULTANCY STUDY FOR WEST KOWLOON CULTURAL DISTRICT DEVELOPMENT PLAN**

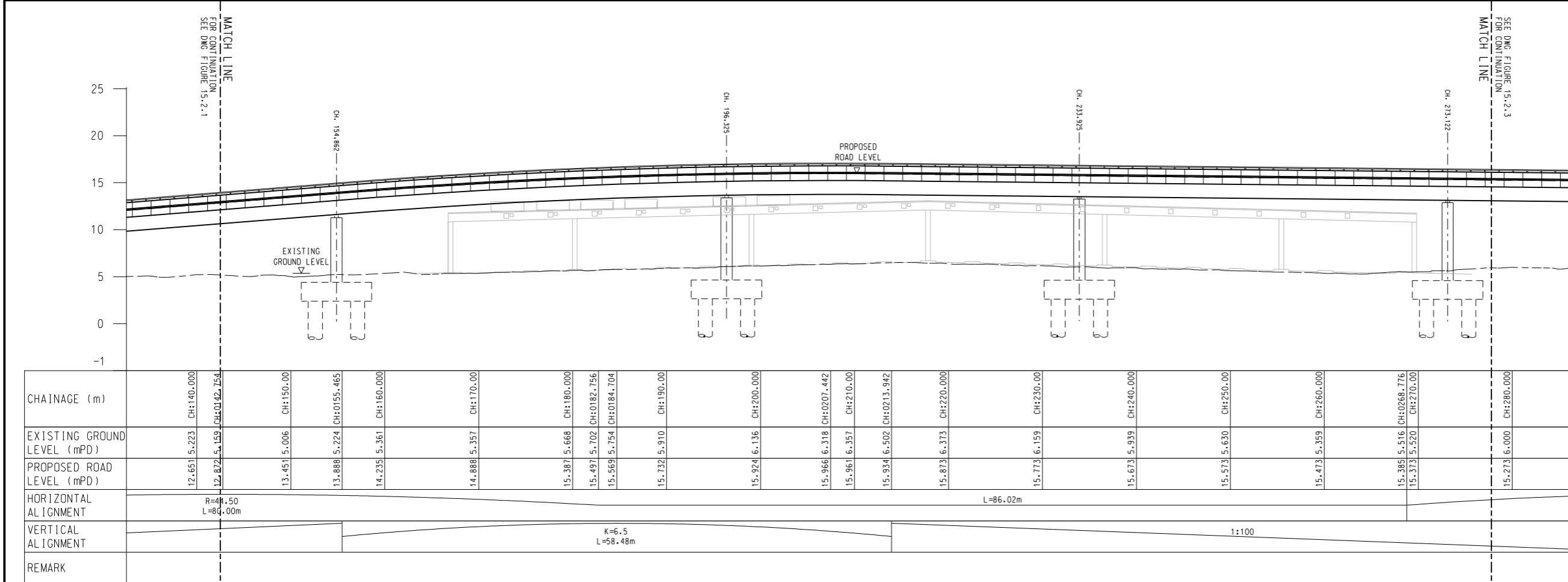
Title  
**PROPOSED AUSTIN ROAD FLYOVER PROFILE OF LAYOUT PLAN (SHEET 1 OF 4)**

Designed	CC	Eng check	OW
Drawn	LUN	Coordination	CC
Dwg check	OW	Approved	SB
Scale at A1	Status	Rev	
1:250	PRE	P2	

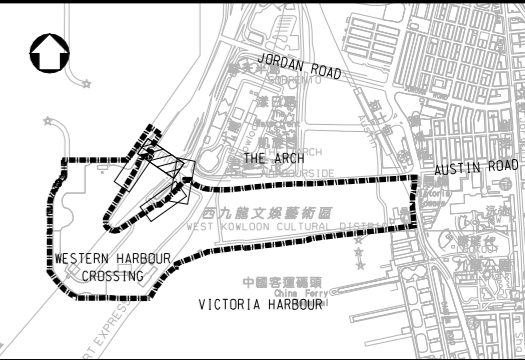
Drawing Number  
**FIGURE 15.2.1**



ROAD ALIGNMENT PLAN  
SCALE 1:250



ROAD PROFILE  
SCALE 1:250



KEY PLAN  
SCALE 1:15000

- NOTES:
- ALL DIMENSIONS ARE IN MILLIMETRES UNLESS NOTED OTHERWISE.
  - ALL LEVELS ARE IN METRES TO PRINCIPAL DATUM (PD) UNLESS NOTED OTHERWISE.
  - ALL CO-ORDINATES REFER TO HONG KONG (1980) METRIC GRID CO-ORDINATES SYSTEM.
  - ALL PILES ARE TO BE BORED PILES UNLESS OTHERWISE STATED.

- LEGEND:
- SITE BOUNDARY

Rev	Date	Drawn	Description	Ch'kd	App'd
P2	MAY 13	MING	GENERAL REVISION	EY	AFK
P1	JUN 12	PL	FIRST ISSUE	OW	SB

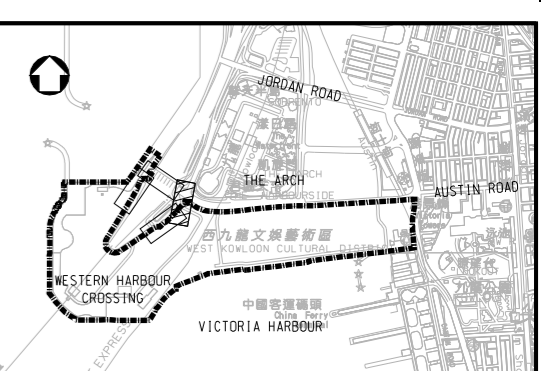
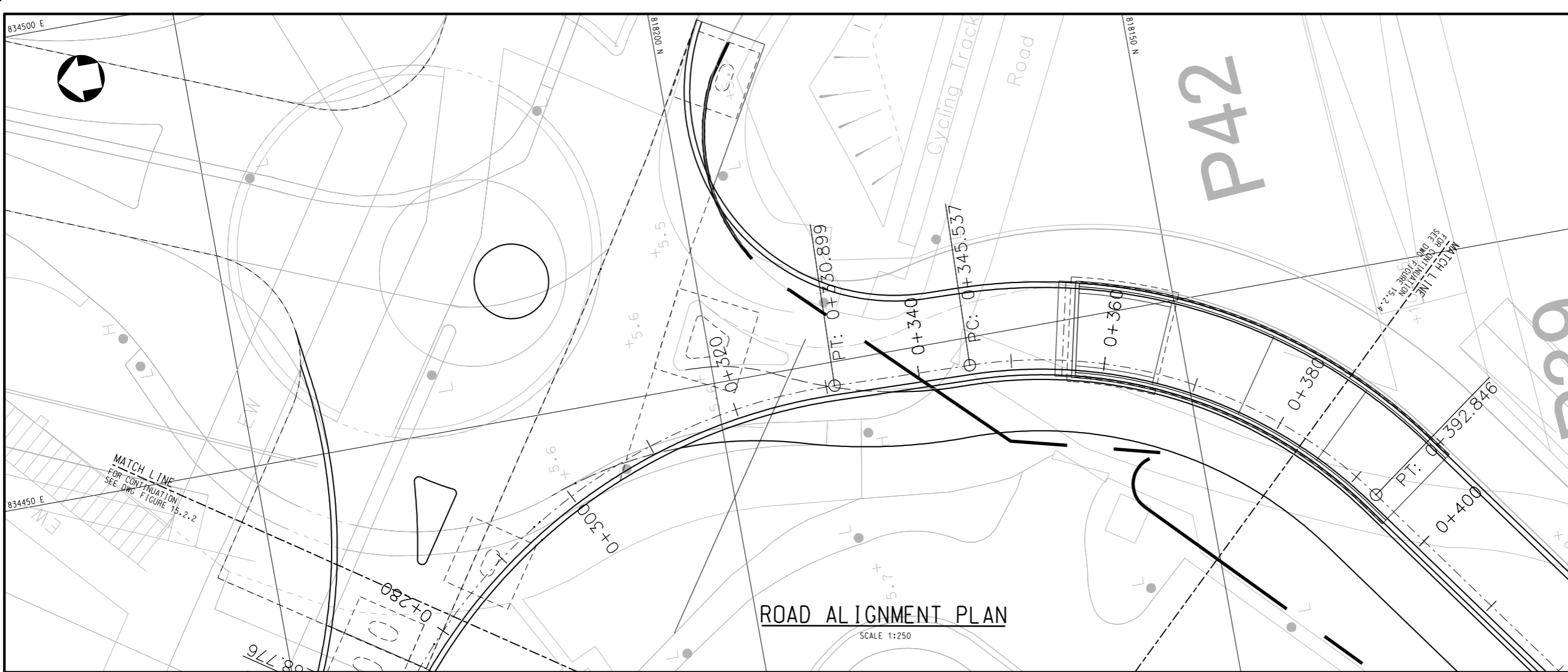
Client  
**WEST KOWLOON CULTURAL DISTRICT AUTHORITY**

Project  
**PROJECT CONSULTANCY STUDY FOR WEST KOWLOON CULTURAL DISTRICT DEVELOPMENT PLAN**

Title  
**PROPOSED AUSTIN ROAD FLYOVER PROFILE OF LAYOUT PLAN (SHEET 2 OF 4)**

Designed	CC	Eng check	OW
Drawn	PL	Coordination	CC
Dwg check	OW	Approved	SB
Scale at A1	1:250	Status	PRE
Drawing Number		Rev	P2

FIGURE 15.2.2



**KEY PLAN**  
SCALE 1:15000

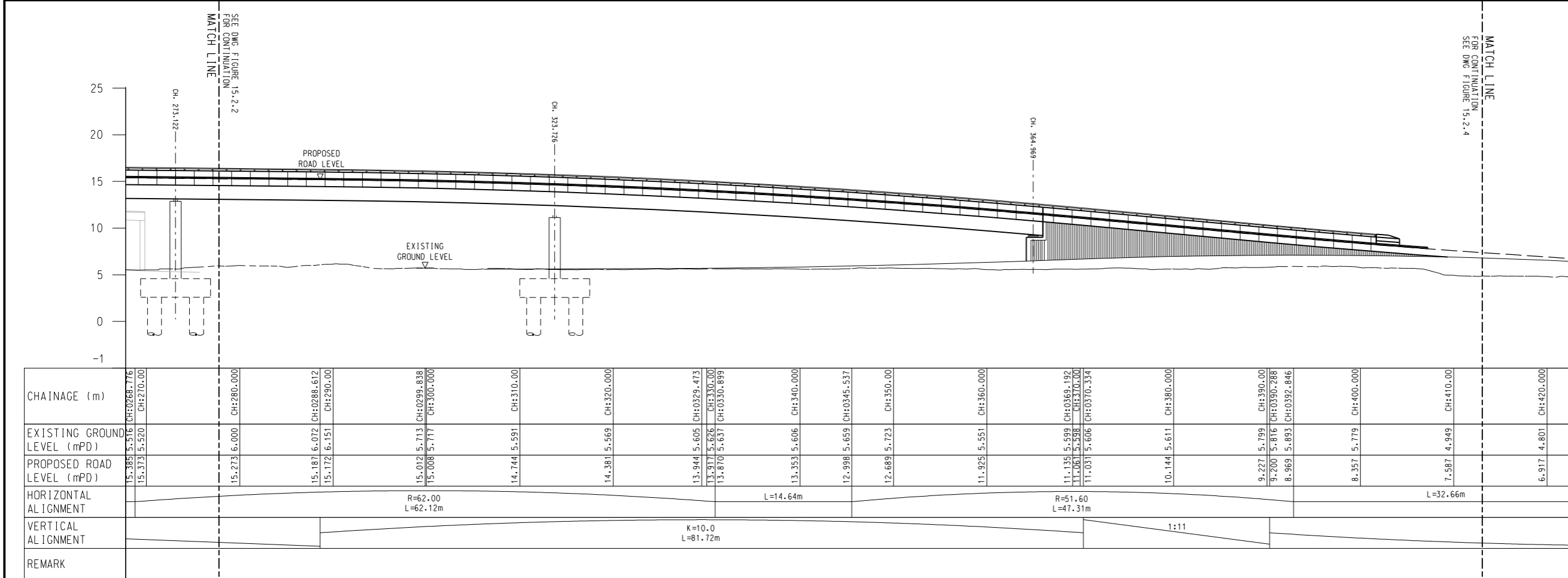
- NOTES:**
1. ALL DIMENSIONS ARE IN MILLIMETRES UNLESS NOTED OTHERWISE.
  2. ALL LEVELS ARE IN METRES TO PRINCIPAL DATUM (PD) UNLESS NOTED OTHERWISE.
  3. ALL CO-ORDINATES REFER TO HONG KONG (1980) METRIC GRID CO-ORDINATES SYSTEM.
  4. ALL PILES ARE TO BE BORED PILE UNLESS OTHERWISE STATED.

- LEGEND:**
- SITE BOUNDARY

Rev	Date	Drawn	Description	Ch'kd	App'd
P2	MAY 13	MING	GENERAL REVISION	EY	AFK
P1	JUN 12	PL	FIRST ISSUE	OW	SB

Client  
**WEST KOWLOON CULTURAL DISTRICT AUTHORITY**

20F Two Landmark East  
100 How Ming Street  
Kwun Tong, Kowloon  
Hong Kong  
☎ +852 2828 6757  
☎ +852 2827 1623  
www.mottmac.com.hk



Project  
**PROJECT CONSULTANCY STUDY FOR WEST KOWLOON CULTURAL DISTRICT DEVELOPMENT PLAN**

Title  
**PROPOSED AUSTIN ROAD FLYOVER PROFILE OF LAYOUT PLAN (SHEET 3 OF 4)**

Designed	JC	Eng check	OW
Drawn	PL	Coordination	CC
Dwg check	OW	Approved	SC
Scale at A1	1:250	Status	PRE
Drawing Number		Rev	P2

**ROAD PROFILE**  
SCALE 1:250

**FIGURE 15.2.3**