

KEY PLAN
SCALE 1:15000

NOTES:

- ALL DIMENSIONS ARE IN MILLIMETRES UNLESS NOTED OTHERWISE.
- ALL LEVELS ARE IN METRES TO PRINCIPAL DATUM (PD) UNLESS NOTED OTHERWISE.
- ALL CO-ORDINATES REFER TO HONG KONG (1980) METRIC GRID CO-ORDINATES SYSTEM.
- ALL PILES ARE TO BE BORED PILE UNLESS OTHERWISE STATED.

LEGEND:

--- SITE BOUNDARY

Rev	Date	Drawn	Description	Ch'kd	App'd
P2	MAY 13	MING	GENERAL REVISION	EY	AFK
P1	JUN 12	PL	FIRST ISSUE	OW	SB

Client
WEST KOWLOON CULTURAL DISTRICT AUTHORITY

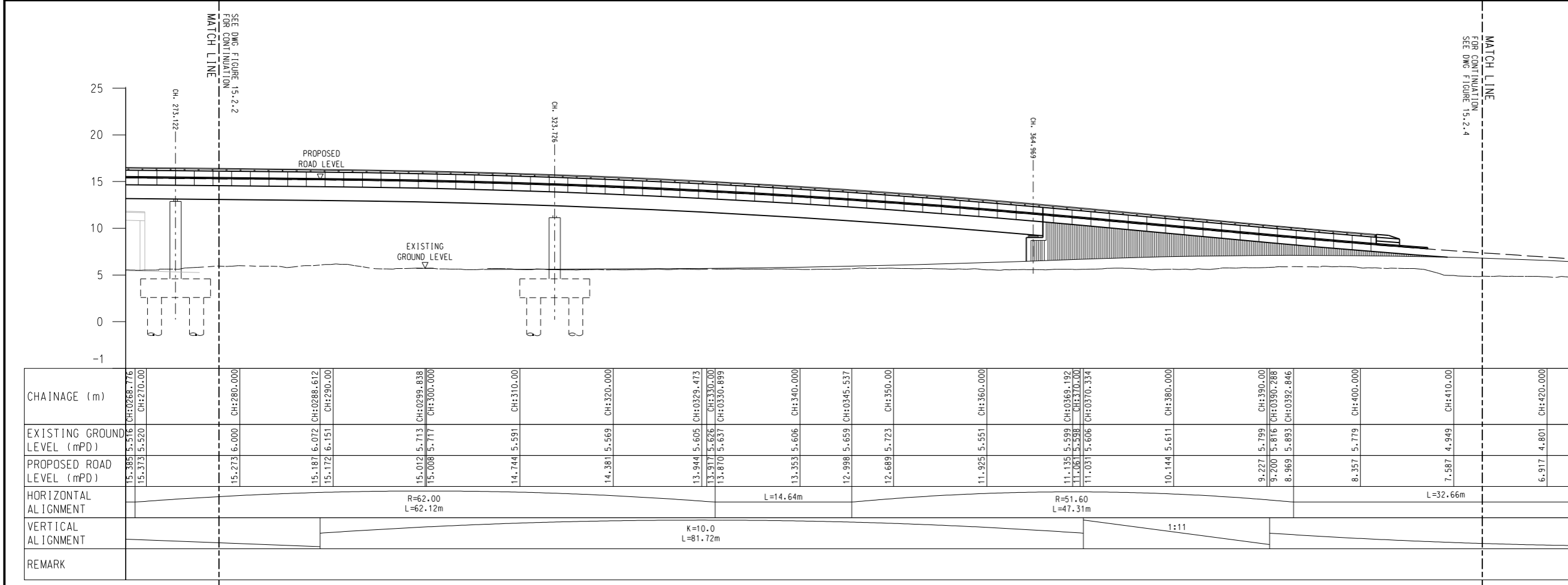
20F Two Landmark East
100 How Ming Street
Kwun Tong, Kowloon
Hong Kong
☎ +852 2828 6757
☎ +852 2827 1623
www.mottmac.com.hk

Project
PROJECT CONSULTANCY STUDY FOR WEST KOWLOON CULTURAL DISTRICT DEVELOPMENT PLAN

Title
PROPOSED AUSTIN ROAD FLYOVER PROFILE OF LAYOUT PLAN (SHEET 3 OF 4)

Designed	JC	Eng check	OW
Drawn	PL	Coordination	CC
Dwg check	OW	Approved	SC
Scale at A1	1:250	Status	PRE
Drawing Number		Rev	P2

FIGURE 15.2.3



CHAINAGE (m)	EXISTING GROUND LEVEL (mPD)	PROPOSED ROAD LEVEL (mPD)	HORIZONTAL ALIGNMENT	VERTICAL ALIGNMENT	REMARK
15.385 5.516 CH:0288.716 15.373 5.520 CH:270.00	15.273 6.000 CH:280.000	15.273 6.000 CH:280.000			
15.187 6.072 CH:0288.612 15.172 6.151 CH:290.00	15.072 5.713 CH:0299.838 15.008 5.717 CH:300.000	15.072 5.713 CH:0299.838 15.008 5.717 CH:300.000	R=62.00 L=62.12m		
14.744 5.591 CH:310.00 14.381 5.569 CH:320.000	14.744 5.591 CH:310.00 14.381 5.569 CH:320.000	14.744 5.591 CH:310.00 14.381 5.569 CH:320.000			
13.944 5.605 CH:0329.473 13.917 5.626 CH:330.00 13.870 5.637 CH:0330.899	13.917 5.626 CH:330.00 13.870 5.637 CH:0330.899	13.917 5.626 CH:330.00 13.870 5.637 CH:0330.899		K=10.0 L=81.72m	
13.353 5.606 CH:340.00 12.998 5.659 CH:0345.537 12.689 5.723 CH:350.00	13.353 5.606 CH:340.00 12.998 5.659 CH:0345.537 12.689 5.723 CH:350.00	13.353 5.606 CH:340.00 12.998 5.659 CH:0345.537 12.689 5.723 CH:350.00	L=14.64m		
11.925 5.551 CH:360.00 11.135 5.599 CH:0369.192 11.061 5.598 CH:370.00 11.031 5.606 CH:0370.334	11.925 5.551 CH:360.00 11.135 5.599 CH:0369.192 11.061 5.598 CH:370.00 11.031 5.606 CH:0370.334	11.925 5.551 CH:360.00 11.135 5.599 CH:0369.192 11.061 5.598 CH:370.00 11.031 5.606 CH:0370.334		R=51.60 L=47.31m	
10.144 5.611 CH:380.00 9.227 5.799 CH:390.00 9.200 5.816 CH:0390.288 8.969 5.893 CH:0392.846	10.144 5.611 CH:380.00 9.227 5.799 CH:390.00 9.200 5.816 CH:0390.288 8.969 5.893 CH:0392.846	10.144 5.611 CH:380.00 9.227 5.799 CH:390.00 9.200 5.816 CH:0390.288 8.969 5.893 CH:0392.846			
8.357 5.779 CH:400.00 7.587 4.949 CH:410.00 6.917 4.801 CH:420.00	8.357 5.779 CH:400.00 7.587 4.949 CH:410.00 6.917 4.801 CH:420.00	8.357 5.779 CH:400.00 7.587 4.949 CH:410.00 6.917 4.801 CH:420.00		L=32.66m	

ROAD PROFILE
SCALE 1:250