

**KEY PLAN**

**NOTE:**  
 THE 5-YEAR ANNUAL AVERAGE BACKGROUND TSP CONCENTRATION (YEAR 2007 - 2011) IS 74.2 µg/m³.

- LEGEND:**
- PROJECT BOUNDARY
  - EXTERNAL CONNECTIONS (INDICATIVE SUBJECT TO FUTURE DESIGN & ARRANGEMENT)
  - ASSESSMENT AREA
  - AOD CRITERIA (80 µg/m³)

Rev	Date	Drawn	Description	Ch'kd	App'd
P5	JUN 13	MING	GENERAL REVISION	HC	AFK
P4	MAY 13	MING	GENERAL REVISION	EY	AFK
P3	APR 13	MING	GENERAL REVISION	HC	AFK
P2	FEB 13	MING	GENERAL REVISION	MCD	AFK
P1	SEP 12	MING	FIRST ISSUE	HC	AFK

Client  
**WEST KOWLOON CULTURAL DISTRICT AUTHORITY**

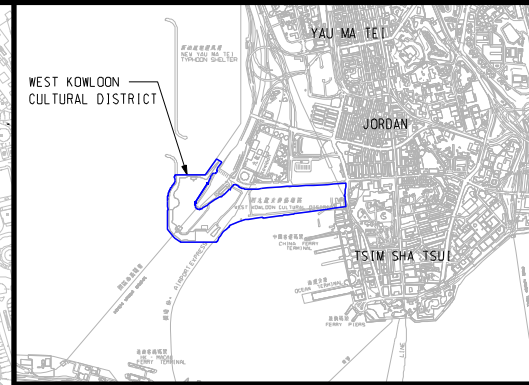
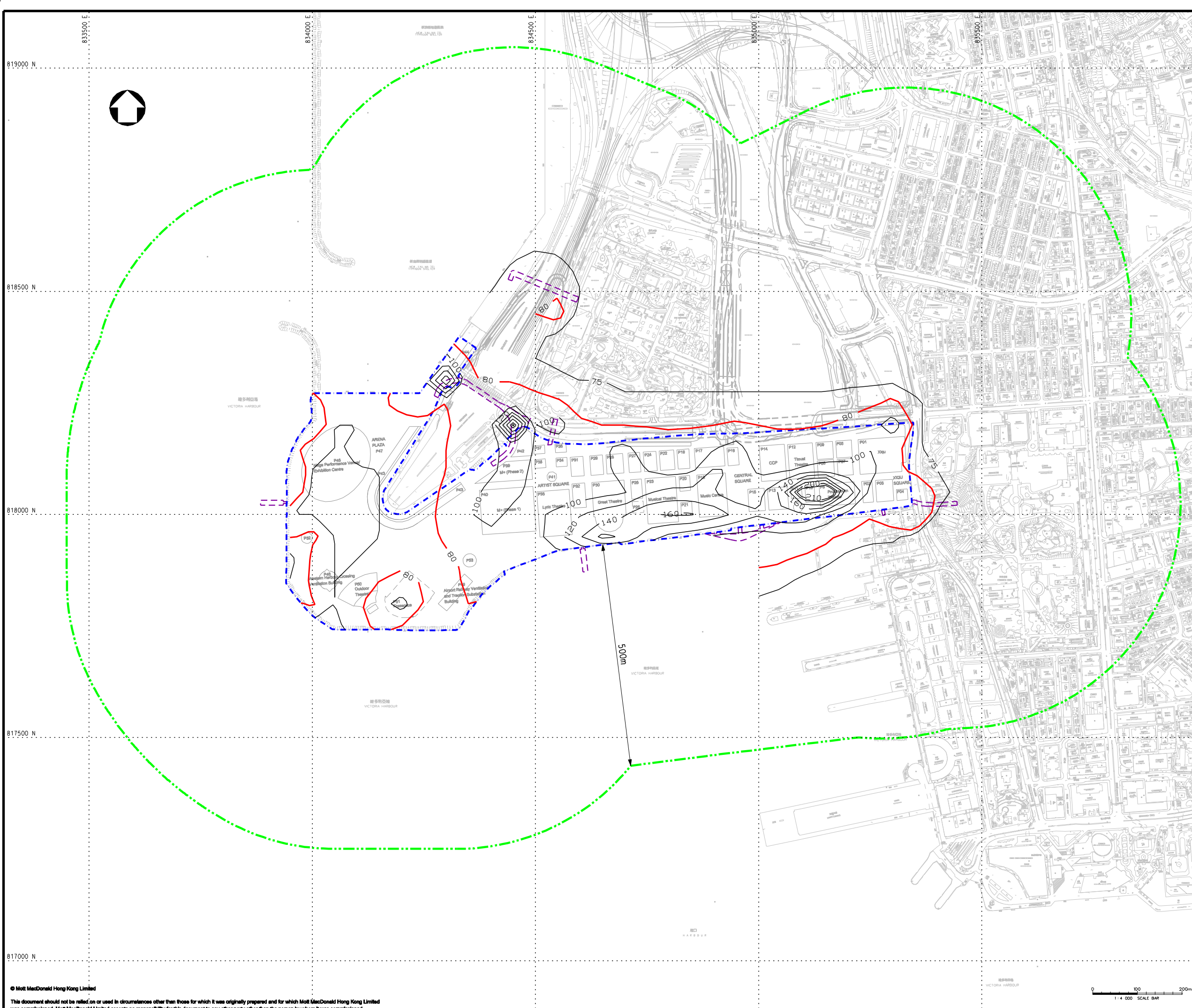
20/F Two Landmark East  
 100 How Ming Street  
 Kowloon, Kowloon  
 Hong Kong  
 T +852 2828 5757  
 F +852 2827 1823  
 www.mottmac.com.hk

Project  
**PROJECT CONSULTANCY STUDY FOR WEST KOWLOON CULTURAL DISTRICT DEVELOPMENT PLAN**

Title  
**CUMULATIVE RESULT - CONTOUR OF ANNUAL TSP CONCENTRATION (µg/m³) AT 1.5m ABOVE GROUND AT YEAR 2013 DURING CONSTRUCTION PHASE (UNMITIGATED)**

Designed	HC	Eng check	MCD
Drawn	MING	Coordination	EC
Dwg check	HC	Approved	AFK
Scale at A1	Status	Rev	
<b>1:4000</b>	<b>PRE</b>	<b>P5</b>	

Drawing Number  
**FIGURE 3.17a**



**KEY PLAN**

**NOTE:**  
THE 5-YEAR ANNUAL AVERAGE BACKGROUND TSP CONCENTRATION (YEAR 2007 - 2011) IS  $74.2 \mu\text{g}/\text{m}^3$ .

- LEGEND:**
- - - PROJECT BOUNDARY
  - - - EXTERNAL CONNECTIONS (INDICATIVE SUBJECT TO FUTURE DESIGN & ARRANGEMENT)
  - · - · - ASSESSMENT AREA
  - AOD CRITERIA ( $80 \mu\text{g}/\text{m}^3$ )

Rev	Date	Drawn	Description	Ch'kd	App'd
P5	JUL 13	MING	GENERAL REVISION	HC	AFK
P4	MAY 13	MING	GENERAL REVISION	EY	AFK
P3	APR 13	MING	GENERAL REVISION	HC	AFK
P2	FEB 13	MING	GENERAL REVISION	MCD	AFK
P1	SEP 12	MING	FIRST ISSUE	HC	AFK

Client  
**WEST KOWLOON CULTURAL DISTRICT AUTHORITY**

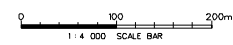
20/F Two Landmark East  
100 How Ming Street  
Kowloon, Kowloon  
Hong Kong  
T +852 2828 5757  
F +852 2827 1823  
www.mottmac.com.hk

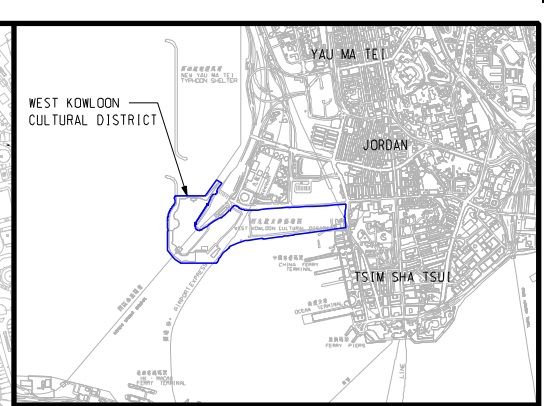
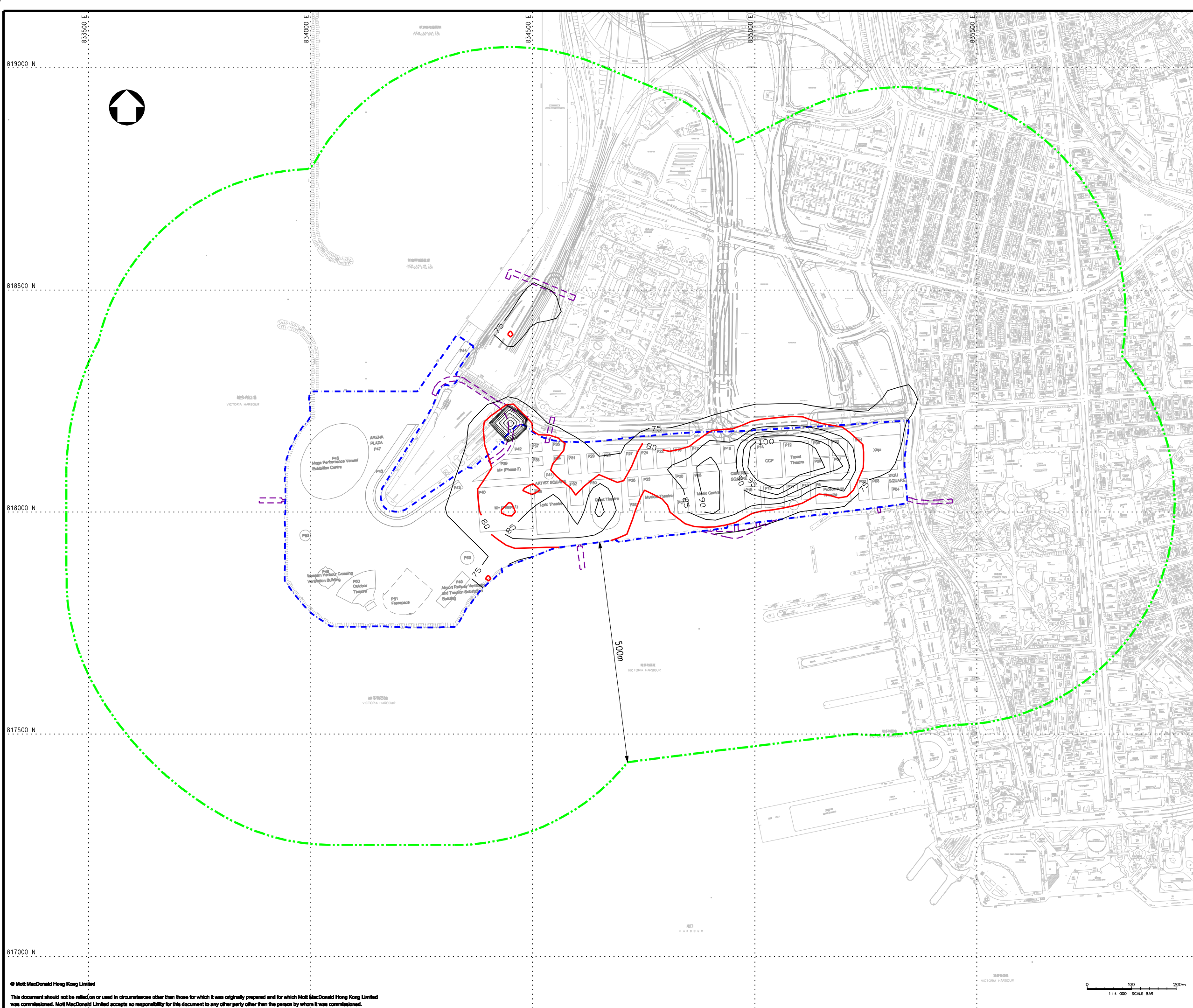
Project  
**PROJECT CONSULTANCY STUDY FOR WEST KOWLOON CULTURAL DISTRICT DEVELOPMENT PLAN**

Title  
**CUMULATIVE RESULT - CONTOUR OF ANNUAL TSP CONCENTRATION ( $\mu\text{g}/\text{m}^3$ ) AT 1.5m ABOVE GROUND AT YEAR 2014 DURING CONSTRUCTION PHASE (UNMITIGATED)**

Designed	HC	Eng check	MCD
Drawn	MING	Coordination	EC
Dwg check	HC	Approved	AFK
Scale at A1	Status	Rev	
<b>1:4000</b>	<b>PRE</b>	<b>P5</b>	

Drawing Number **FIGURE 3.17b**





**KEY PLAN**

**NOTE:**  
 THE 5-YEAR ANNUAL AVERAGE BACKGROUND TSP CONCENTRATION (YEAR 2007 - 2011) IS  $74.2 \mu\text{g}/\text{m}^3$ .

- LEGEND:**
- - - PROJECT BOUNDARY
  - - - EXTERNAL CONNECTIONS (INDICATIVE SUBJECT TO FUTURE DESIGN & ARRANGEMENT)
  - · - · - ASSESSMENT AREA
  - AOD CRITERIA ( $80 \mu\text{g}/\text{m}^3$ )

P4	MAY 13	MING	GENERAL REVISION	EY	AFK
P3	APR 13	MING	GENERAL REVISION	HC	AFK
P2	FEB 13	MING	GENERAL REVISION	MCD	AFK
P1	SEP 12	MING	FIRST ISSUE	HC	AFK
Rev	Date	Drawn	Description	Ch'kd	App'd

Client  
**WEST KOWLOON CULTURAL DISTRICT AUTHORITY**

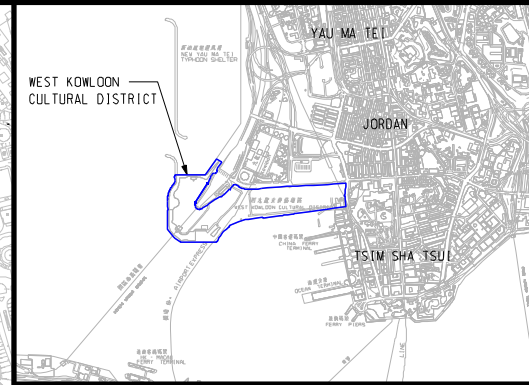
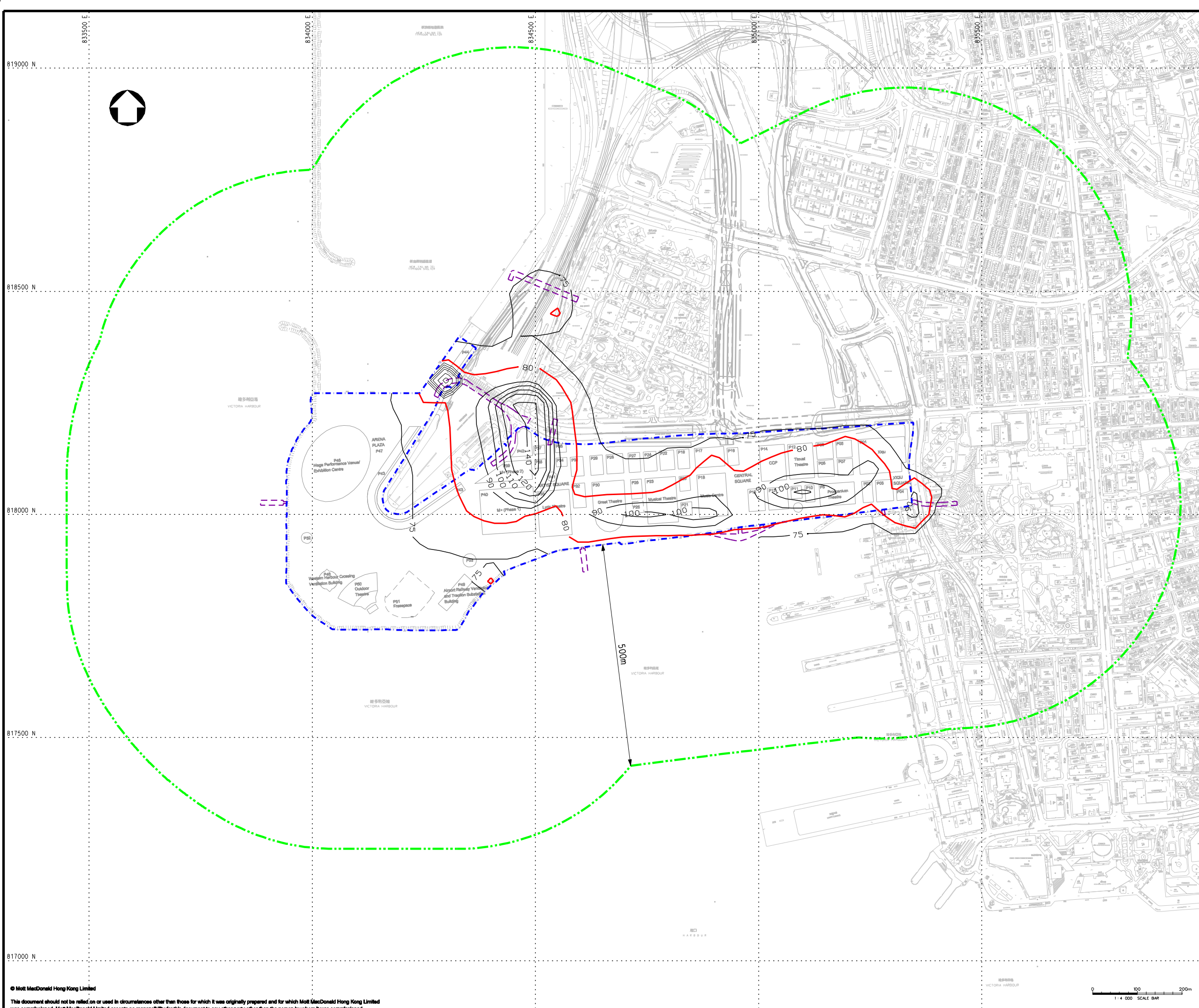
20/F Two Landmark East  
 100 How Ming Street  
 Kowloon, Kowloon  
 Hong Kong  
 T +852 2828 5757  
 F +852 2827 1823  
 www.mottmac.com.hk

Project  
**PROJECT CONSULTANCY STUDY FOR WEST KOWLOON CULTURAL DISTRICT DEVELOPMENT PLAN**

Title  
**CUMULATIVE RESULT - CONTOUR OF ANNUAL TSP CONCENTRATION ( $\mu\text{g}/\text{m}^3$ ) AT 1.5m ABOVE GROUND AT YEAR 2015 DURING CONSTRUCTION PHASE (UNMITIGATED)**

Designed	HC	Eng check	MCD
Drawn	MING	Coordination	EC
Dwg check	HC	Approved	AFK
Scale at A1	Status	Rev	
<b>1:4000</b>	<b>PRE</b>	<b>P4</b>	

Drawing Number **FIGURE 3.17c**



**KEY PLAN**

**NOTE:**  
THE 5-YEAR ANNUAL AVERAGE BACKGROUND TSP CONCENTRATION (YEAR 2007 - 2011) IS  $74.2 \mu\text{g}/\text{m}^3$ .

- LEGEND:**
- - - PROJECT BOUNDARY
  - - - EXTERNAL CONNECTIONS (INDICATIVE SUBJECT TO FUTURE DESIGN & ARRANGEMENT)
  - · - · - ASSESSMENT AREA
  - AOD CRITERIA ( $80 \mu\text{g}/\text{m}^3$ )

P4	MAY 13	MING	GENERAL REVISION	EY	AFK
P3	APR 13	MING	GENERAL REVISION	HC	AFK
P2	FEB 13	MING	GENERAL REVISION	MCD	AFK
P1	SEP 12	MING	FIRST ISSUE	HC	AFK
Rev	Date	Drawn	Description	Ch'kd	App'd

Client  
**WEST KOWLOON CULTURAL DISTRICT AUTHORITY**

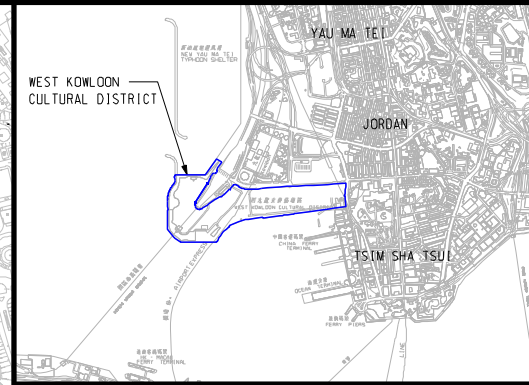
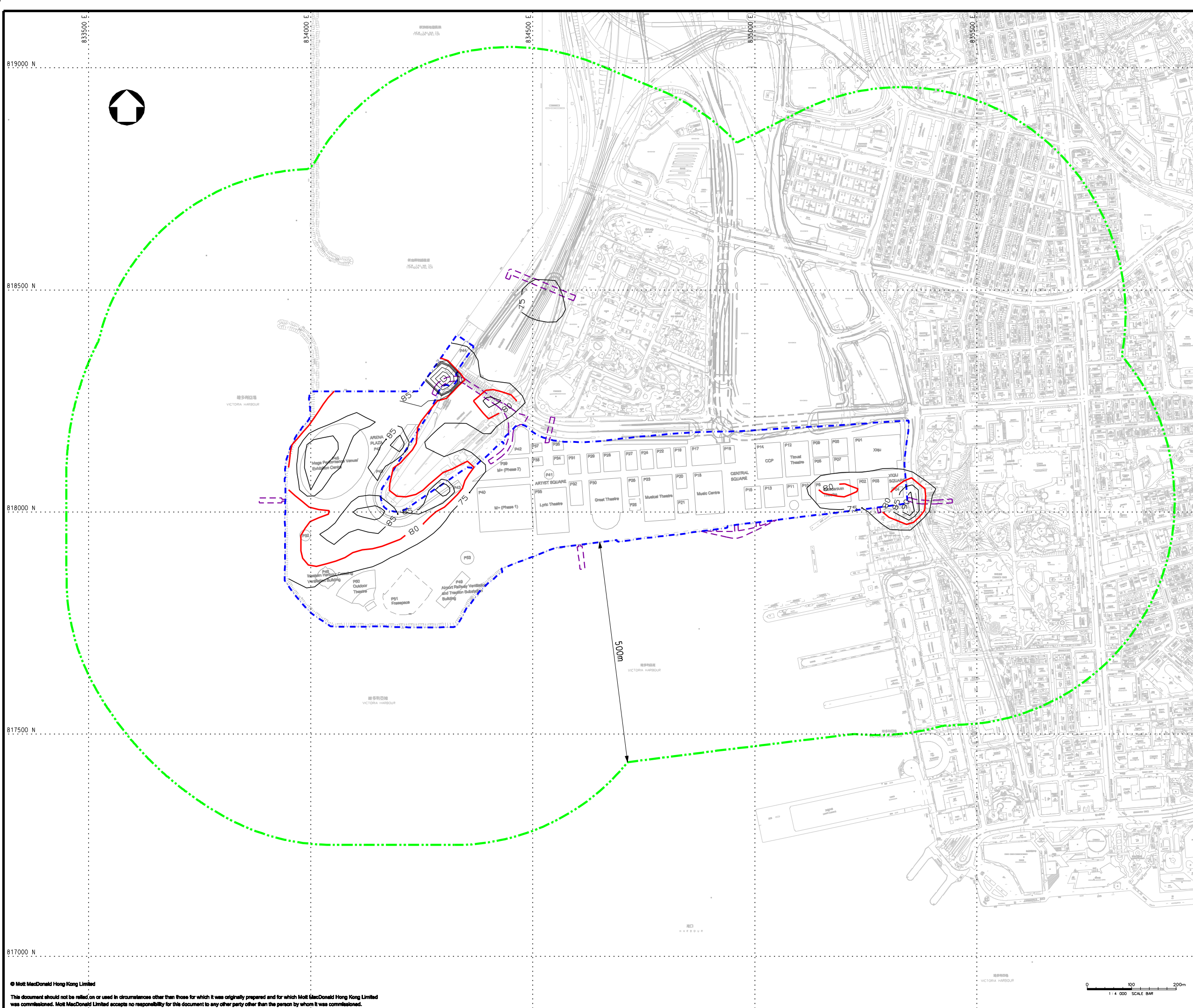
20/F Two Landmark East  
100 How Ming Street  
Kowloon, Kowloon  
Hong Kong  
T +852 2828 5757  
F +852 2827 1823  
www.mottmac.com.hk

Project  
**PROJECT CONSULTANCY STUDY FOR WEST KOWLOON CULTURAL DISTRICT DEVELOPMENT PLAN**

Title  
**CUMULATIVE RESULT - CONTOUR OF ANNUAL TSP CONCENTRATION ( $\mu\text{g}/\text{m}^3$ ) AT 1.5m ABOVE GROUND AT YEAR 2016 DURING CONSTRUCTION PHASE (UNMITIGATED)**

Designed	HC	Eng check	MCD
Drawn	MING	Coordination	EC
Dwg check	HC	Approved	AFK
Scale at A1	Status	Rev	
<b>1:4000</b>	<b>PRE</b>	<b>P4</b>	

Drawing Number **FIGURE 3.17d**



**KEY PLAN**

**NOTE:**  
 THE 5-YEAR ANNUAL AVERAGE BACKGROUND TSP CONCENTRATION (YEAR 2007 - 2011) IS  $74.2 \mu\text{g}/\text{m}^3$ .

- LEGEND:**
- PROJECT BOUNDARY
  - EXTERNAL CONNECTIONS (INDICATIVE SUBJECT TO FUTURE DESIGN & ARRANGEMENT)
  - ASSESSMENT AREA
  - AOD CRITERIA ( $80 \mu\text{g}/\text{m}^3$ )

Rev	Date	Drawn	Description	Ch'kd	App'd
P4	MAY 13	MING	GENERAL REVISION	EY	AFK
P3	APR 13	MING	GENERAL REVISION	HC	AFK
P2	FEB 13	MING	GENERAL REVISION	MCD	AFK
P1	SEP 12	MING	FIRST ISSUE	HC	AFK

Client  
**WEST KOWLOON CULTURAL DISTRICT AUTHORITY**

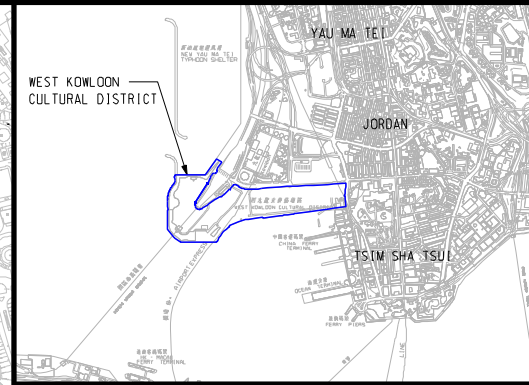
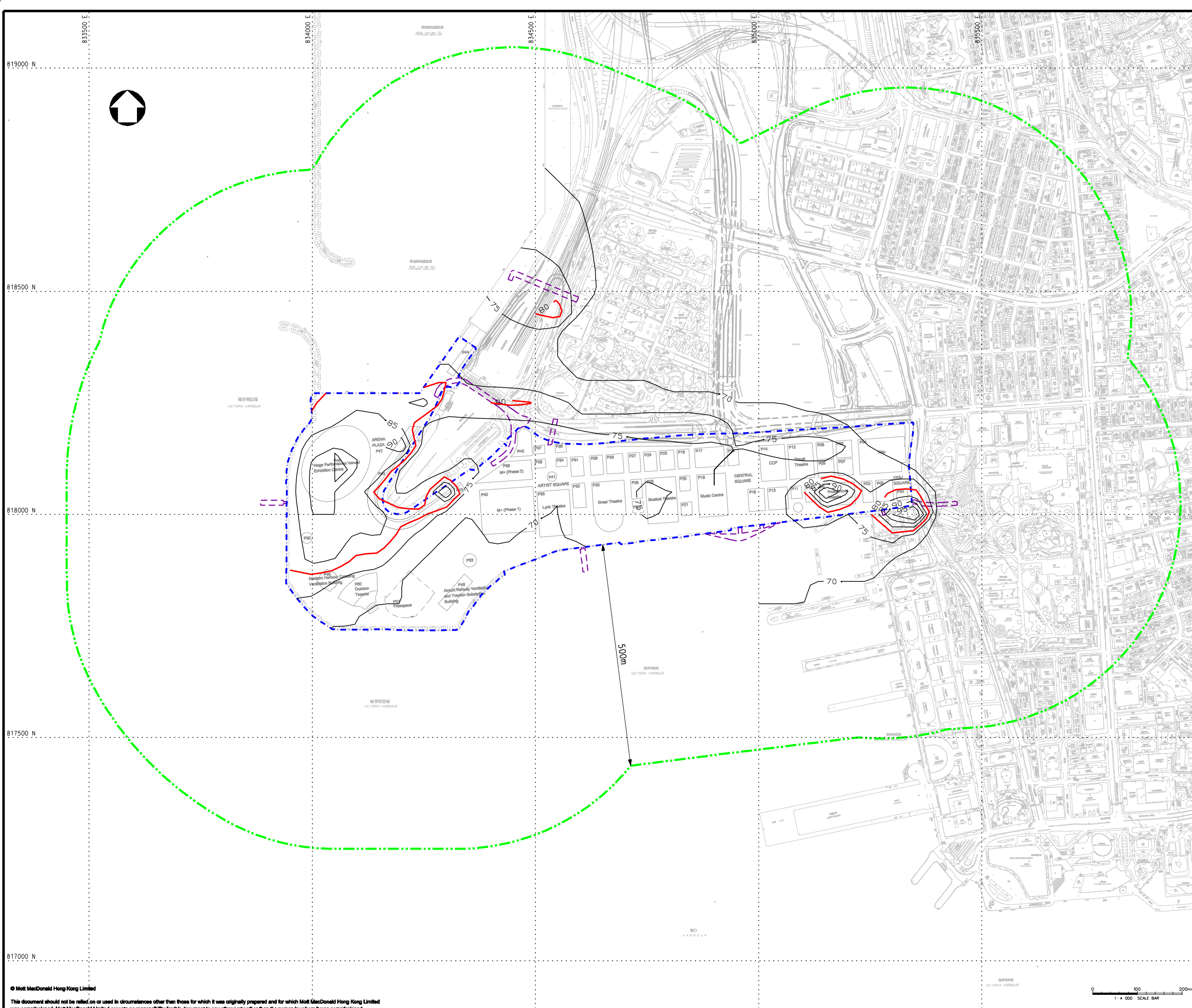
20/F Two Landmark East  
 100 How Ming Street  
 Kowloon, Kowloon  
 Hong Kong  
 T +852 2828 5757  
 F +852 2827 1823  
 www.mottmac.com.hk

Project  
**PROJECT CONSULTANCY STUDY FOR WEST KOWLOON CULTURAL DISTRICT DEVELOPMENT PLAN**

Title  
**CUMULATIVE RESULT - CONTOUR OF ANNUAL TSP CONCENTRATION ( $\mu\text{g}/\text{m}^3$ ) AT 1.5m ABOVE GROUND AT YEAR 2017 DURING CONSTRUCTION PHASE (UNMITIGATED)**

Designed	HC	Eng check	MCD
Drawn	MING	Coordination	EC
Dwg check	HC	Approved	AFK
Scale at A1	Status	Rev	
<b>1:4000</b>	<b>PRE</b>	<b>P4</b>	

Drawing Number **FIGURE 3.17e**



**KEY PLAN**

**NOTE:**  
 THE 5-YEAR ANNUAL AVERAGE BACKGROUND TSP CONCENTRATION (YEAR 2007 - 2011) IS  $74.2 \mu\text{g}/\text{m}^3$ .

- LEGEND:**
- - - PROJECT BOUNDARY
  - - - EXTERNAL CONNECTIONS (INDICATIVE SUBJECT TO FUTURE DESIGN & ARRANGEMENT)
  - . - . - ASSESSMENT AREA
  - - - AOD CRITERIA ( $80 \mu\text{g}/\text{m}^3$ )

Rev	Date	Drawn	Description	Ch'kd	App'd
P4	MAY 13	MING	GENERAL REVISION	EY	AFK
P3	APR 13	MING	GENERAL REVISION	HC	AFK
P2	FEB 13	MING	GENERAL REVISION	MCD	AFK
P1	SEP 12	MING	FIRST ISSUE	HC	AFK

Client  
**WEST KOWLOON CULTURAL DISTRICT AUTHORITY**

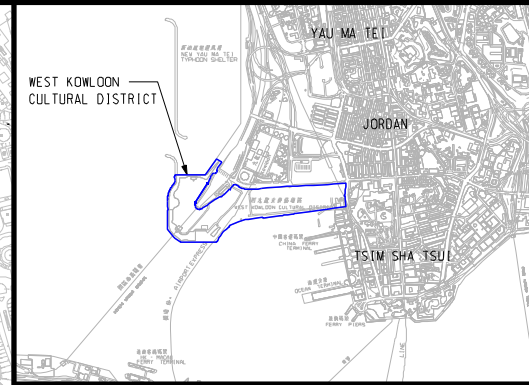
20/F Two Landmark East  
 100 How Ming Street  
 Kowloon, Kowloon  
 Hong Kong  
 T +852 2828 5757  
 F +852 2827 1823  
 www.mottmac.com.hk

Project  
**PROJECT CONSULTANCY STUDY FOR WEST KOWLOON CULTURAL DISTRICT DEVELOPMENT PLAN**

Title  
**CUMULATIVE RESULT - CONTOUR OF ANNUAL TSP CONCENTRATION ( $\mu\text{g}/\text{m}^3$ ) AT 1.5m ABOVE GROUND AT YEAR 2018 DURING CONSTRUCTION PHASE (UNMITIGATED)**

Designed	HC	Eng check	MCD
Drawn	MING	Coordination	EC
Dwg check	HC	Approved	AFK
Scale at A1	Status	Rev	
<b>1:4000</b>	<b>PRE</b>	<b>P4</b>	

Drawing Number  
**FIGURE 3.17f**



**KEY PLAN**

**NOTE:**  
 THE 5-YEAR ANNUAL AVERAGE BACKGROUND TSP CONCENTRATION (YEAR 2007 - 2011) IS  $74.2 \mu\text{g}/\text{m}^3$ .

- LEGEND:**
- PROJECT BOUNDARY
  - EXTERNAL CONNECTIONS (INDICATIVE SUBJECT TO FUTURE DESIGN & ARRANGEMENT)
  - ASSESSMENT AREA
  - AOD CRITERIA ( $80 \mu\text{g}/\text{m}^3$ )

Rev	Date	Drawn	Description	Ch'kd	App'd
P4	MAY 13	MING	GENERAL REVISION	EY	AFK
P3	APR 13	MING	GENERAL REVISION	HC	AFK
P2	FEB 13	MING	GENERAL REVISION	MCD	AFK
P1	SEP 12	MING	FIRST ISSUE	HC	AFK

Client  
**WEST KOWLOON CULTURAL DISTRICT AUTHORITY**

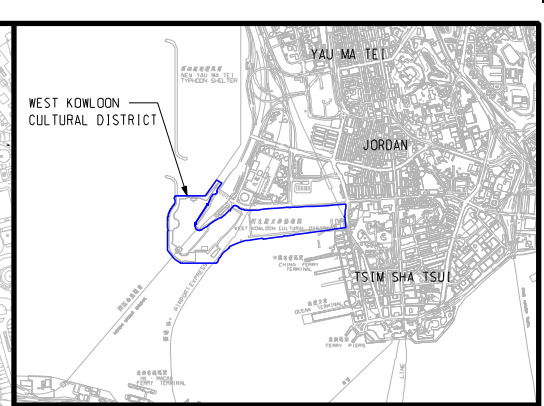
20/F Two Landmark East  
 100 How Ming Street  
 Kowloon, Kowloon  
 Hong Kong  
 T +852 2828 5757  
 F +852 2827 1823  
 www.mottmac.com.hk

Project  
**PROJECT CONSULTANCY STUDY FOR WEST KOWLOON CULTURAL DISTRICT DEVELOPMENT PLAN**

Title  
**CUMULATIVE RESULT - CONTOUR OF ANNUAL TSP CONCENTRATION ( $\mu\text{g}/\text{m}^3$ ) AT 1.5m ABOVE GROUND AT YEAR 2019 DURING CONSTRUCTION PHASE (UNMITIGATED)**

Designed	HC	Eng check	MCD
Drawn	MING	Coordination	EC
Dwg check	HC	Approved	AFK
Scale at A1	Status	Rev	
<b>1:4000</b>	<b>PRE</b>	<b>P4</b>	

Drawing Number **FIGURE 3.17g**



**KEY PLAN**

**NOTE:**  
THE 5-YEAR ANNUAL AVERAGE BACKGROUND TSP CONCENTRATION (YEAR 2007 - 2011) IS  $74.2 \mu\text{g}/\text{m}^3$ .

- LEGEND:**
- - - PROJECT BOUNDARY
  - - - EXTERNAL CONNECTIONS (INDICATIVE SUBJECT TO FUTURE DESIGN & ARRANGEMENT)
  - · - · - ASSESSMENT AREA
  - AOD CRITERIA ( $80 \mu\text{g}/\text{m}^3$ )

Rev	Date	Drawn	Description	Ch'kd	App'd
P5	JUL 13	MING	GENERAL REVISION	HC	AFK
P4	MAY 13	MING	GENERAL REVISION	EY	AFK
P3	APR 13	MING	GENERAL REVISION	HC	AFK
P2	FEB 13	MING	GENERAL REVISION	MCD	AFK
P1	SEP 12	MING	FIRST ISSUE	HC	AFK

Client  
**WEST KOWLOON CULTURAL DISTRICT AUTHORITY**

20/F Two Landmark East  
100 How Ming Street  
Kowloon, Kowloon  
Hong Kong  
T +852 2828 5757  
F +852 2827 1823  
www.mottmac.com.hk

Project  
**PROJECT CONSULTANCY STUDY FOR WEST KOWLOON CULTURAL DISTRICT DEVELOPMENT PLAN**

Title  
**CUMULATIVE RESULT - CONTOUR OF ANNUAL TSP CONCENTRATION ( $\mu\text{g}/\text{m}^3$ ) AT 1.5m ABOVE GROUND AT YEAR 2020 DURING CONSTRUCTION PHASE (UNMITIGATED)**

Designed	HC	Eng check	MCD
Drawn	MING	Coordination	EC
Dwg check	HC	Approved	AFK
Scale at A1	Status	Rev	
<b>1:4000</b>	<b>PRE</b>	<b>P5</b>	

Drawing Number **FIGURE 3.17h**