

- LEGEND:**
- PROJECT BOUNDARY
 - EXTERNAL CONNECTIONS (INDICATIVE SUBJECT TO FUTURE DESIGN & ARRANGEMENT)
 - BASEMENT LEVEL ZONE
 - CONCRETE BATCHING PLANT (CONCURRENT PROJECT)
 - EMISSION SOURCE OF CONCRETE BATCHING PLANT (POINT SOURCE)

- EMISSION SOURCE OF CONCRETE BATCHING PLANT (AREA SOURCE):-**
- EP11
 - EP12
 - EP13
 - EP14
 - EP15
 - EP16
 - EP17
 - EP18
 - EP19
 - EP20
 - EP21
 - EP22
 - EP23

- GROUND LEVEL ZONE:-**
- ZONE 1
 - ZONE 2
 - ZONE 3
 - ZONE 4
 - ZONE 5 (HOTEL)
 - ZONE A (THE PARK)
 - ZONE B (THE PARK)
 - ZONE C (THE PARK)
 - EXCLUDED AREAS

P3	JUN 13	MING	GENERAL REVISION	AM	AFK
P2	MAY 13	MING	GENERAL REVISION	EY	AFK
P1	SEP 12	MING	FIRST ISSUE	HC	AFK
Rev	Date	Drawn	Description	Ch'kd	App'd

Client

WEST KOWLOON CULTURAL DISTRICT AUTHORITY

Mott MacDonald

20F Two Landmark East
100 How Ming Street
Kowloon, Kowloon
Hong Kong
T +852 2828 5757
F +852 2827 1823
www.mottmac.com.hk

ARTEC **IMG Artists** **Lord**

TFP | FARRELLS **G | H | K**

DONNELL **LD ASIA** **BMT**

Project

PROJECT CONSULTANCY STUDY FOR WEST KOWLOON CULTURAL DISTRICT DEVELOPMENT PLAN

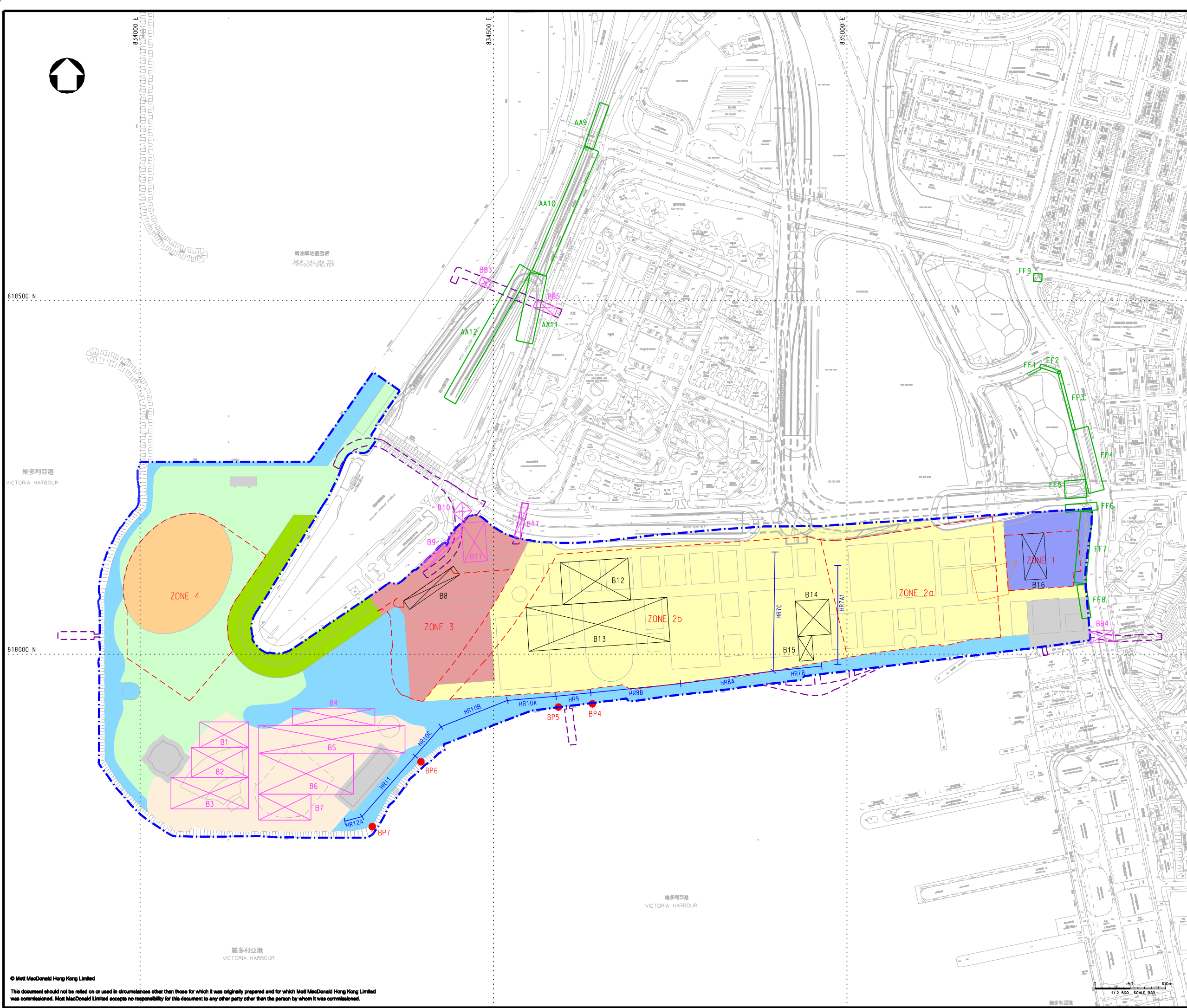
Title

LOCATIONS OF POTENTIAL CONSTRUCTION DUST SOURCES FROM CONCRETE BATCHING PLANT AND ITS HAUL ROADS IN YEAR 2013

Designed	HC	Eng check	FN
Drawn	MING	Coordination	EC
Dwg check	HC	Approved	AFK
Scale at A1	Status	Rev	
1:1250	PRE	P3	

Drawing Number

FIGURE 3.3a



- LEGEND:**
- PROJECT BOUNDARY
 - EXTERNAL CONNECTIONS (INDICATIVE SUBJECT TO FUTURE DESIGN & ARRANGEMENT)
 - BASEMENT LEVEL ZONE
 - EMISSION SOURCE OF WKCD PROJECT - GROUND LEVEL WORKS (AREA SOURCE)
 - EMISSION SOURCE OF WKCD PROJECT - BASEMENT WORKS (AREA SOURCE)
 - EMISSION SOURCE OF CONCURRENT PROJECT (AREA SOURCE)
 - EMISSION SOURCE OF CONCURRENT PROJECT (LINE SOURCE)
 - CONCRETE BATCHING PLANT (CONCURRENT PROJECT)
 - EMISSION SOURCE OF CONCURRENT PROJECT - BARGING POINT

- GROUND LEVEL ZONE:-**
- ZONE 1
 - ZONE 2
 - ZONE 3
 - ZONE 4
 - ZONE 5 (HOTEL)
 - ZONE A (THE PARK)
 - ZONE B (THE PARK)
 - ZONE C (THE PARK)
 - EXCLUDED AREAS

P3	JUN 13	MING	GENERAL REVISION	AM	AFK
P2	MAY 13	MING	GENERAL REVISION	EY	AFK
P1	SEP 12	MING	FIRST ISSUE	HC	AFK
Rev	Date	Drawn	Description	Ch'kd	App'd

Client
WEST KOWLOON CULTURAL DISTRICT AUTHORITY

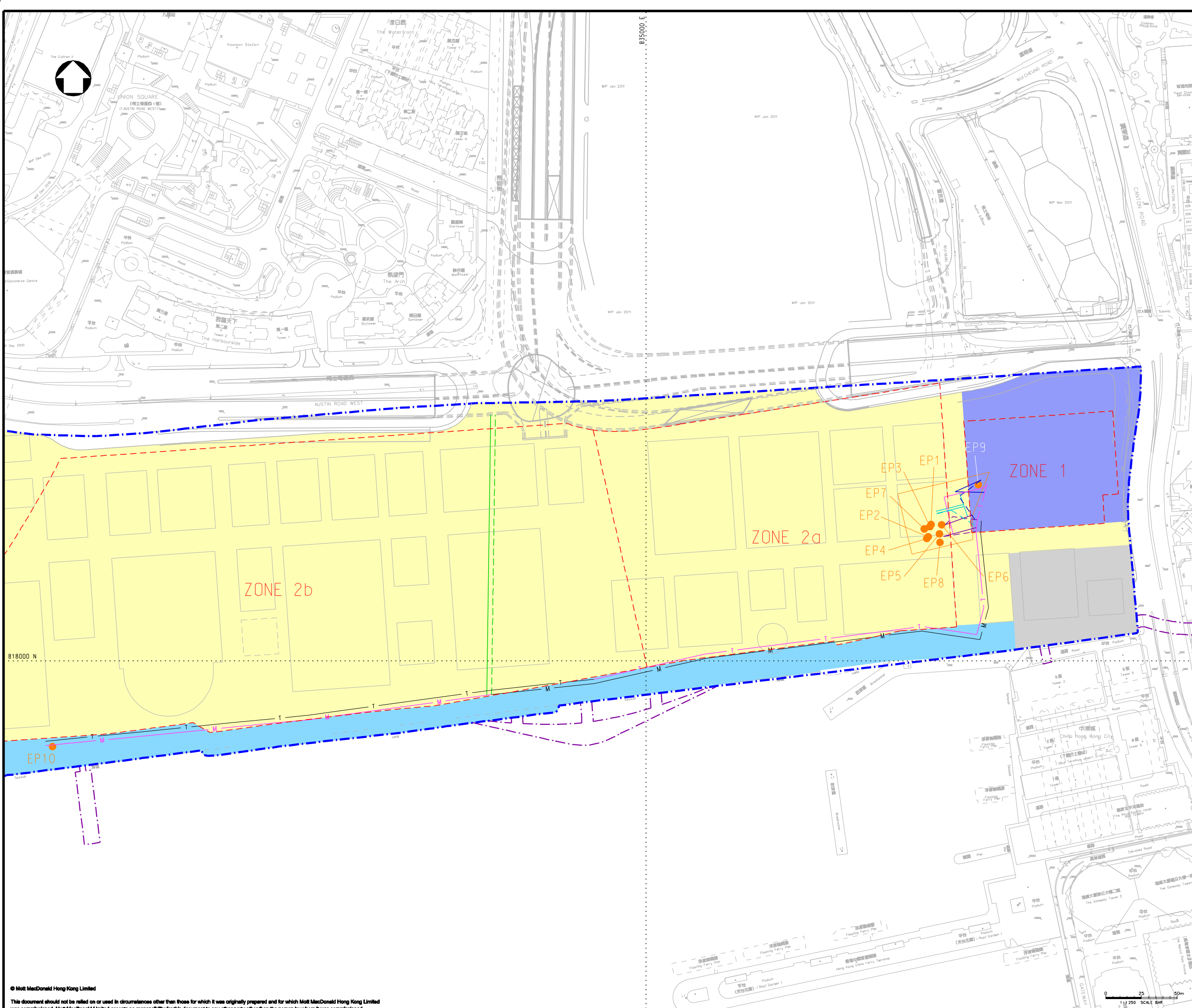
20/F Two Landmark East
100 How Ming Street
Kowloon, Kowloon
Hong Kong
T +852 2828 5757
F +852 2827 1823
www.mottmac.com.hk

Project
PROJECT CONSULTANCY STUDY FOR WEST KOWLOON CULTURAL DISTRICT DEVELOPMENT PLAN

Title
LOCATIONS OF POTENTIAL CONSTRUCTION DUST SOURCES (TIER 1) IN YEAR 2013

Designed	HC	Eng check	FN
Drawn	MING	Coordination	EC
Dwg check	HC	Approved	AFK
Scale at A1	Status	Rev	
1:2500	PRE	P3	

Drawing Number
FIGURE 3.3b



- LEGEND:**
- PROJECT BOUNDARY
 - EXTERNAL CONNECTIONS (INDICATIVE SUBJECT TO FUTURE DESIGN & ARRANGEMENT)
 - BASEMENT LEVEL ZONE
 - CONCRETE BATCHING PLANT (CONCURRENT PROJECT)
 - EMISSION SOURCE OF CONCRETE BATCHING PLANT (POINT SOURCE)

- EMISSION SOURCE OF CONCRETE BATCHING PLANT (AREA SOURCE):-**
- EP11
 - EP12
 - EP13
 - EP14
 - EP15
 - EP16
 - EP17
 - EP18
 - EP19
 - EP20
 - EP21
 - EP22
 - EP23

- GROUND LEVEL ZONE:-**
- ZONE 1
 - ZONE 2
 - ZONE 3
 - ZONE 4
 - ZONE 5 (HOTEL)
 - ZONE A (THE PARK)
 - ZONE B (THE PARK)
 - ZONE C (THE PARK)
 - EXCLUDED AREAS

P1	JUN 13	MING	FIRST ISSUE	HC	AFK
Rev	Date	Drawn	Description	Ch'kd	App'd

WEST KOWLOON CULTURAL DISTRICT AUTHORITY

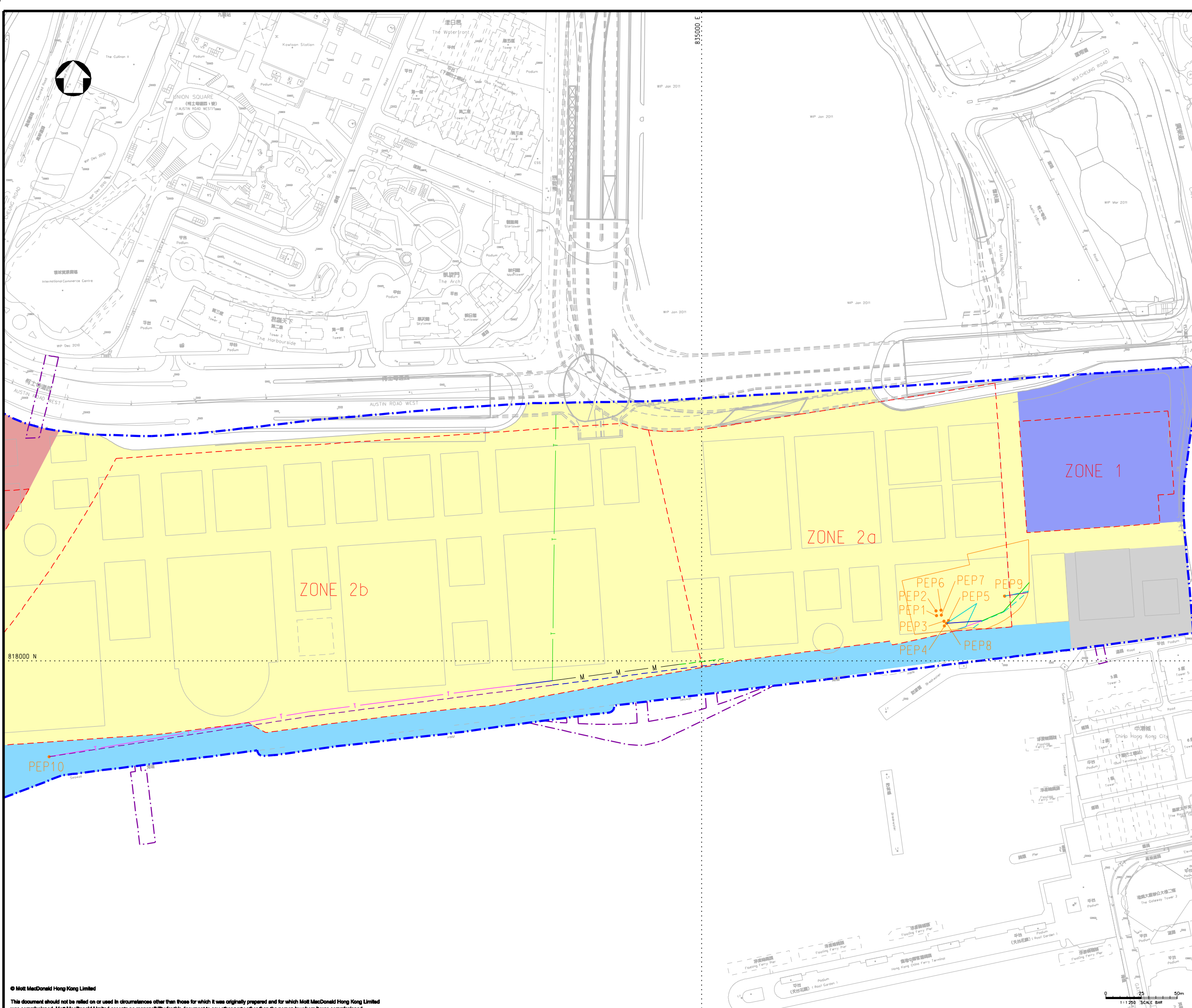
20F Two Landmark East
100 How Ming Street
Kowloon, Kowloon
Hong Kong
T +852 2828 5757
F +852 2827 1823
www.mottmac.com.hk

PROJECT CONSULTANCY STUDY FOR WEST KOWLOON CULTURAL DISTRICT DEVELOPMENT PLAN

LOCATIONS OF POTENTIAL CONSTRUCTION DUST SOURCES FROM CONCRETE BATCHING PLANT (PHASE 1) AND ITS HAUL ROADS IN YEAR 2014

Designed	HC	Eng check	EC
Drawn	MING	Coordination	EC
Dwg check	HC	Approved	AFK
Scale at A1	Status	Rev	
1:1250	PRE	P1	

FIGURE 3.3c-1



- LEGEND:**
- PROJECT BOUNDARY
 - EXTERNAL CONNECTIONS (INDICATIVE SUBJECT TO FUTURE DESIGN & ARRANGEMENT)
 - BASEMENT LEVEL ZONE
 - CONCRETE BATCHING PLANT (CONCURRENT PROJECT)
 - EMISSION SOURCE OF CONCRETE BATCHING PLANT (POINT SOURCE)

- EMISSION SOURCE OF CONCRETE BATCHING PLANT (AREA SOURCE):-**
- | | |
|---|---|
| --- AEP1 | --- AEP11 |
| --- AEP2 | --- AEP12 |
| --- AEP3 | --- AEP13 |
| --- AEP6 | --- AEP14 |
| --- AEP8 | --- AEP16 |
| --- AEP9 | --- AEP17 |

- GROUND LEVEL ZONE:-**
- | | |
|---|--|
| ZONE 1 | ZONE A (THE PARK) |
| ZONE 2 | ZONE B (THE PARK) |
| ZONE 3 | ZONE C (THE PARK) |
| ZONE 4 | EXCLUDED AREAS |
| ZONE 5 (HOTEL) | |

P1	JUN 13	MING	FIRST ISSUE	HC	AFK
Rev	Date	Drawn	Description	Ch'kd	App'd

WEST KOWLOON CULTURAL DISTRICT AUTHORITY

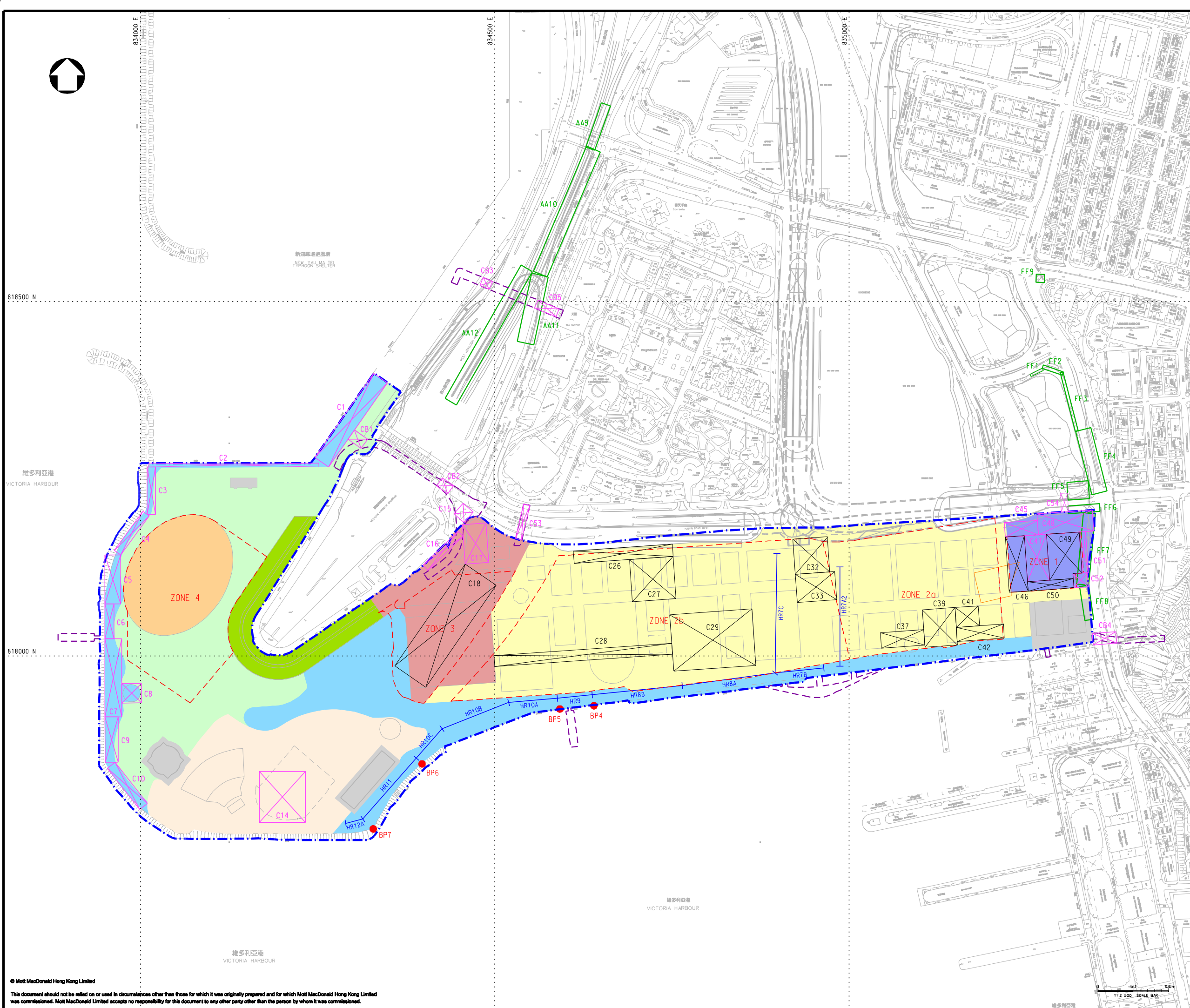
20/F Two Landmark East
100 How Ming Street
Kowloon, Kowloon
Hong Kong
T +852 2828 5757
F +852 2827 1823
www.mottmac.com.hk

PROJECT CONSULTANCY STUDY FOR WEST KOWLOON CULTURAL DISTRICT DEVELOPMENT PLAN

LOCATIONS OF POTENTIAL CONSTRUCTION DUST SOURCES FROM CONCRETE BATCHING PLANT (PHASE 2) AND ITS HAUL ROADS IN YEAR 2014

Designed	HC	Eng check	EC
Drawn	MING	Coordination	EC
Dwg check	HC	Approved	AFK
Scale at A1	Status	Rev	
1:1250	PRE	P1	

FIGURE 3.3c-2



- LEGEND:**
- PROJECT BOUNDARY
 - EXTERNAL CONNECTIONS (INDICATIVE SUBJECT TO FUTURE DESIGN & ARRANGEMENT)
 - BASEMENT LEVEL ZONE
 - EMISSION SOURCE OF WKCD PROJECT - GROUND LEVEL WORKS (AREA SOURCE)
 - EMISSION SOURCE OF WKCD PROJECT - BASEMENT WORKS (AREA SOURCE)
 - EMISSION SOURCE OF CONCURRENT PROJECT (AREA SOURCE)
 - EMISSION SOURCE OF CONCURRENT PROJECT (LINE SOURCE)
 - CONCRETE BATCHING PLANT (CONCURRENT PROJECT)
 - EMISSION SOURCE OF CONCURRENT PROJECT - BARGING POINT

- GROUND LEVEL ZONE:-**
- ZONE 1
 - ZONE 2
 - ZONE 3
 - ZONE 4
 - ZONE 5 (HOTEL)
 - ZONE A (THE PARK)
 - ZONE B (THE PARK)
 - ZONE C (THE PARK)
 - EXCLUDED AREAS

P1	JUN 13	MING	FIRST ISSUE	HC	AFK
Rev	Date	Drawn	Description	Ch'kd	App'd

Client
WEST KOWLOON CULTURAL DISTRICT AUTHORITY

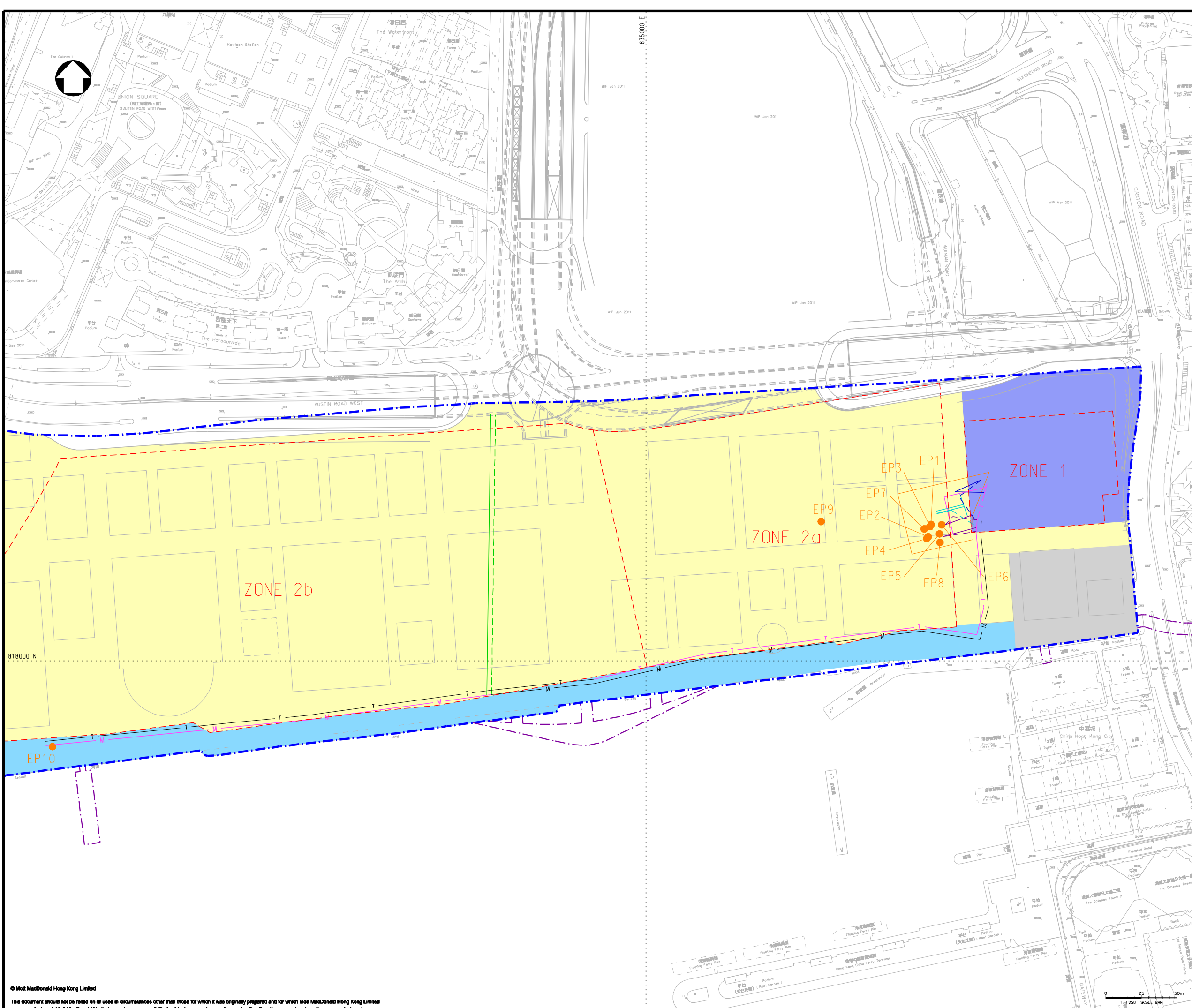
20F Two Landmark East
100 How Ming Street
Kowloon, Kowloon
Hong Kong
T +852 2828 5757
F +852 2827 1823
www.mottmac.com.hk

Project
PROJECT CONSULTANCY STUDY FOR WEST KOWLOON CULTURAL DISTRICT DEVELOPMENT PLAN

Title
LOCATIONS OF POTENTIAL CONSTRUCTION DUST SOURCES (TIER 1) IN YEAR 2014

Designed	HC	Eng check	EC
Drawn	MING	Coordination	EC
Dwg check	HC	Approved	AFK
Scale at A1	Status	Rev	
1:2500	PRE	P1	

Drawing Number **FIGURE 3.3c-3**



- LEGEND:**
- PROJECT BOUNDARY
 - EXTERNAL CONNECTIONS (INDICATIVE SUBJECT TO FUTURE DESIGN & ARRANGEMENT)
 - BASEMENT LEVEL ZONE
 - CONCRETE BATCHING PLANT OF WKCD PROJECT
 - EMISSION SOURCE OF CONCRETE BATCHING PLANT (POINT SOURCE)

- EMISSION SOURCE OF CONCRETE BATCHING PLANT (AREA SOURCE):-**
- EP11
 - EP12
 - EP13
 - EP14
 - EP15
 - EP16
 - EP17
 - EP18
 - EP19
 - EP20
 - EP21
 - EP22
 - EP23

- GROUND LEVEL ZONE:-**
- ZONE 1
 - ZONE 2
 - ZONE 3
 - ZONE 4
 - ZONE 5 (HOTEL)
 - ZONE A (THE PARK)
 - ZONE B (THE PARK)
 - ZONE C (THE PARK)
 - EXCLUDED AREAS

P3	JUN 13	MING	GENERAL REVISION	AM	AFK
P2	MAY 13	MING	GENERAL REVISION	EY	AFK
P1	SEP 12	MING	FIRST ISSUE	HC	AFK
Rev	Date	Drawn	Description	Ch'kd	App'd

Client

WEST KOWLOON CULTURAL DISTRICT AUTHORITY

Mott MacDonald

20F Two Landmark East
100 How Ming Street
Kowloon, Kowloon
Hong Kong
T +852 2828 5757
F +852 2827 1823
www.mottmac.com.hk

ARTEC **IMG Artists** **Lord**

TFP | FARRELLS **G | H | K**

creative thinking positive solutions **warwickasia limited** **MVA**

DONNELL **LD ASIA** **BMT**

Project

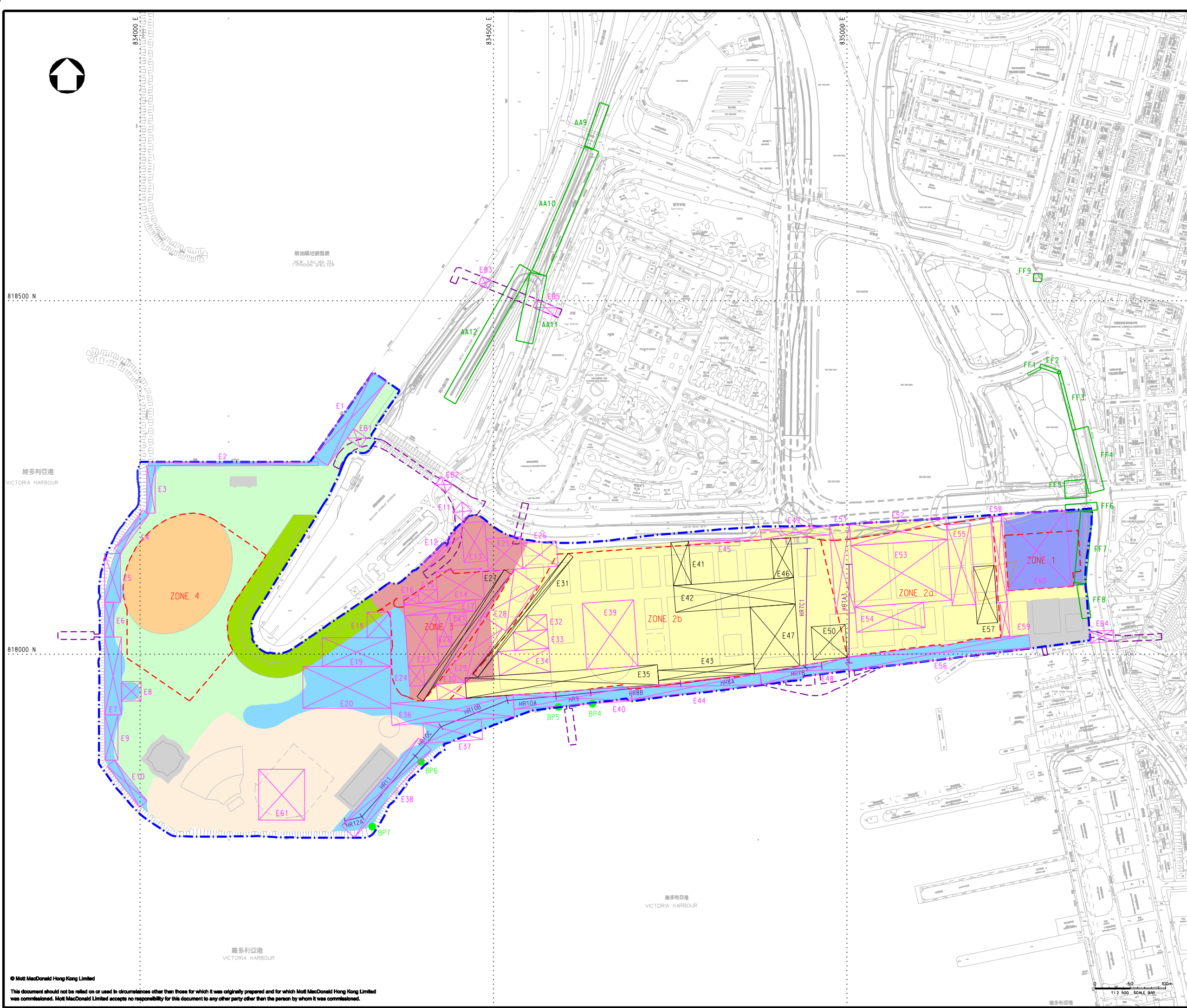
PROJECT CONSULTANCY STUDY FOR WEST KOWLOON CULTURAL DISTRICT DEVELOPMENT PLAN

Title

LOCATIONS OF POTENTIAL CONSTRUCTION DUST SOURCES FROM CONCRETE BATCHING PLANT AND ITS HAUL ROADS IN YEAR 2015 - 2016

Designed	HC	Eng check	FN
Drawn	MING	Coordination	EC
Dwg check	HC	Approved	AFK
Scale at A1	Status	Rev	
1:1250	PRE	P3	

Drawing Number **FIGURE 3.3d**



LEGEND:

- PROJECT BOUNDARY
- EXTERNAL CONNECTIONS (INDICATIVE SUBJECT TO FUTURE DESIGN & ARRANGEMENT)
- BASEMENT LEVEL ZONE
- EMISSION SOURCE OF WKCD PROJECT - GROUND LEVEL WORKS (AREA SOURCE)
- EMISSION SOURCE OF WKCD PROJECT - BASEMENT WORKS (AREA SOURCE)
- EMISSION SOURCE OF CONCURRENT PROJECT (AREA SOURCE)
- EMISSION SOURCE OF WKCD PROJECT (LINE SOURCE)
- CONCRETE BATCHING PLANT OF WKCD PROJECT
- EMISSION SOURCE OF WKCD PROJECT - BARGING POINT

GROUND LEVEL ZONE:-

- ZONE 1
- ZONE 2
- ZONE 3
- ZONE 4
- ZONE 5 (HOTEL)
- ZONE A (THE PARK)
- ZONE B (THE PARK)
- ZONE C (THE PARK)
- EXCLUDED AREAS

P3	JUN 13	MING	GENERAL REVISION	AM	AFK
P2	MAY 13	MING	GENERAL REVISION	EY	AFK
P1	SEP 12	MING	FIRST ISSUE	HC	AFK
Rev	Date	Drawn	Description	Ch'kd	App'd

Client
WEST KOWLOON CULTURAL DISTRICT AUTHORITY

20/F Two Landmark East
100 How Ming Street
Kowloon, Kowloon
Hong Kong
T +852 2828 5757
F +852 2827 1823
www.mottmac.com.hk

Project
PROJECT CONSULTANCY STUDY FOR WEST KOWLOON CULTURAL DISTRICT DEVELOPMENT PLAN

Title
LOCATIONS OF POTENTIAL CONSTRUCTION DUST SOURCES (TIER 1) IN YEAR 2015

Designed	HC	Eng check	FN
Drawn	MING	Coordination	EC
Dwg check	HC	Approved	AFK
Scale at A1	Status	Rev	
1:2500	PRE	P3	

Drawing Number **FIGURE 3.3e**



- LEGEND:**
- PROJECT BOUNDARY
 - EXTERNAL CONNECTIONS (INDICATIVE SUBJECT TO FUTURE DESIGN & ARRANGEMENT)
 - BASEMENT LEVEL ZONE
 - EMISSION SOURCE OF WKCD PROJECT - GROUND LEVEL WORKS (AREA SOURCE)
 - EMISSION SOURCE OF WKCD PROJECT - BASEMENT WORKS (AREA SOURCE)
 - EMISSION SOURCE OF WKCD PROJECT (LINE SOURCE)
 - CONCRETE BATCHING PLANT OF WKCD PROJECT
 - EMISSION SOURCE OF WKCD PROJECT - BARGING POINT

- GROUND LEVEL ZONE:-**
- ZONE 1
 - ZONE 2
 - ZONE 3
 - ZONE 4
 - ZONE 5 (HOTEL)
 - ZONE A (THE PARK)
 - ZONE B (THE PARK)
 - ZONE C (THE PARK)
 - EXCLUDED AREAS

P4	JUN 13	MING	GENERAL REVISION	AM	AFK
P3	MAY 13	MING	GENERAL REVISION	EY	AFK
P2	APR 13	MING	GENERAL REVISION	HC	AFK
P1	SEP 12	MING	FIRST ISSUE	HC	AFK
Rev	Date	Drawn	Description	Ch'kd	App'd

Client

WEST KOWLOON CULTURAL DISTRICT AUTHORITY



20F Two Landmark East
100 How Ming Street
Kwun Tong, Kowloon
Hong Kong
T +852 2828 5757
F +852 2827 1823
www.mottmac.com.hk



Project

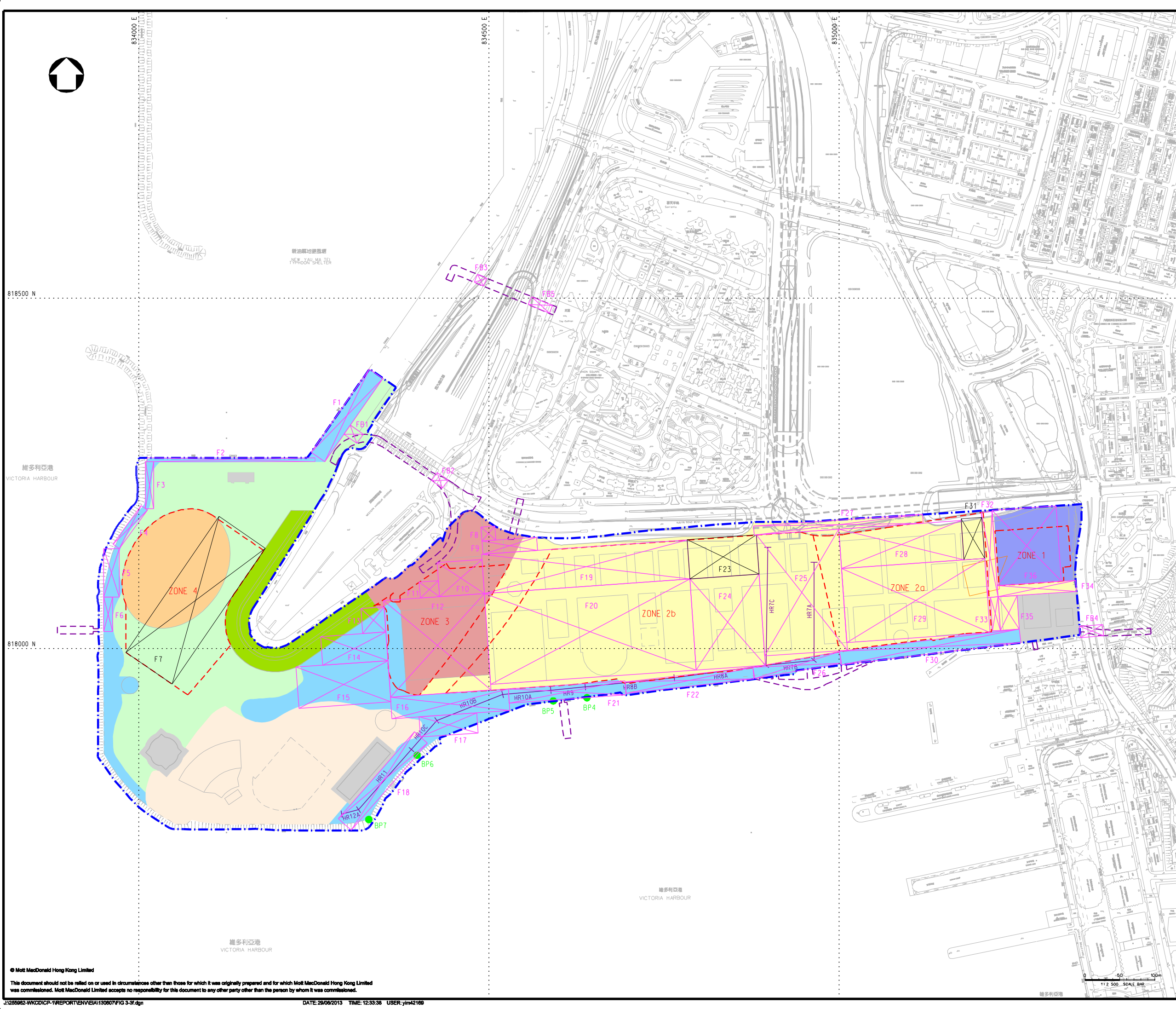
PROJECT CONSULTANCY STUDY FOR WEST KOWLOON CULTURAL DISTRICT DEVELOPMENT PLAN

Title

LOCATIONS OF POTENTIAL CONSTRUCTION DUST SOURCES (TIER 1) IN YEAR 2016

Designed	HC	Eng check	FN
Drawn	MING	Coordination	EC
Dwg check	HC	Approved	AFK
Scale at A1	Status	Rev	
1:2500	PRE	P4	

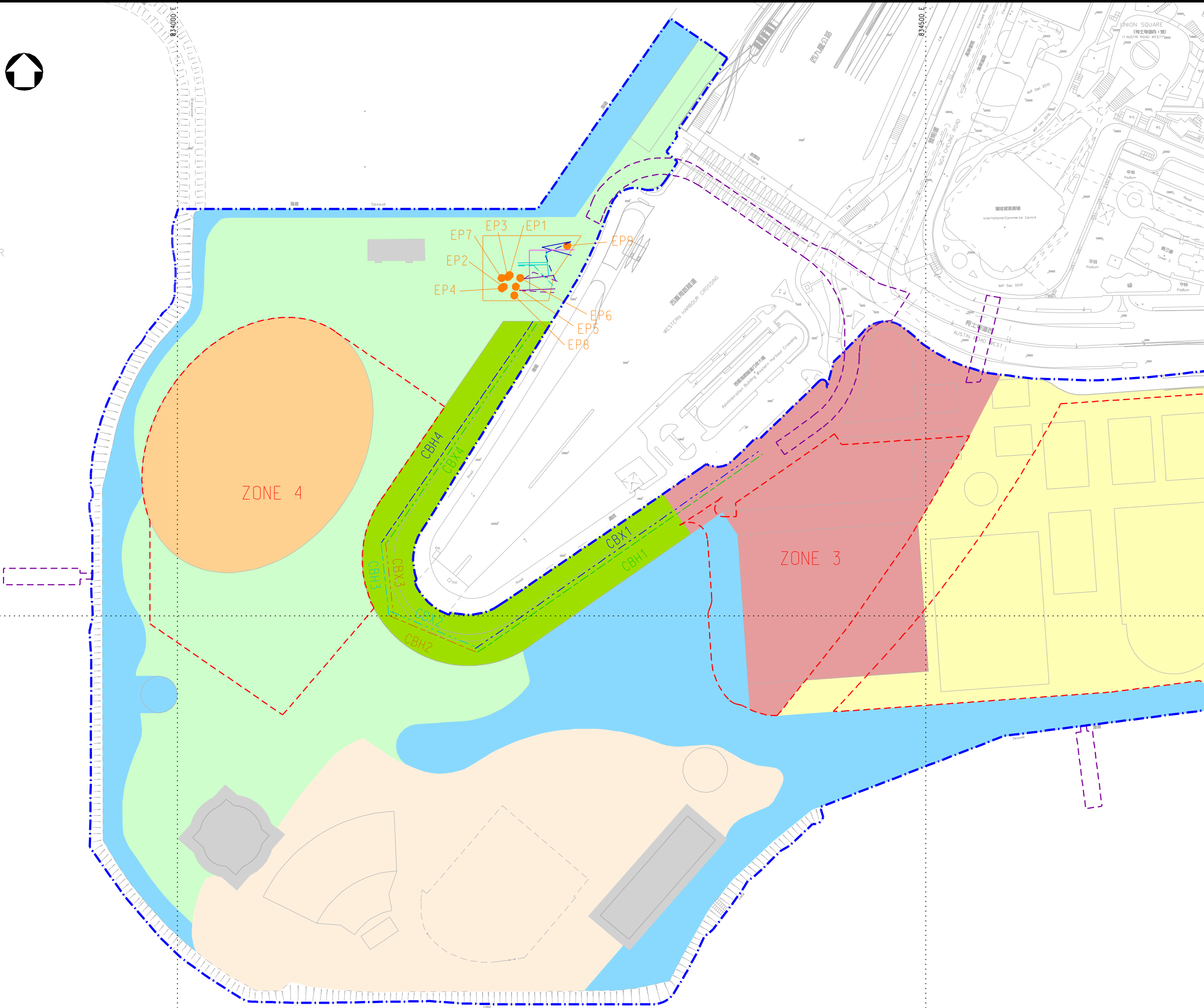
Drawing Number **FIGURE 3.3f**





利亞港
HARBOUR

818000 N



LEGEND:

- PROJECT BOUNDARY
- EXTERNAL CONNECTIONS (INDICATIVE SUBJECT TO FUTURE DESIGN & ARRANGEMENT)
- BASEMENT LEVEL ZONE
- CONCRETE BATCHING PLANT (CONCURRENT PROJECT)
- EMISSION SOURCE OF CONCRETE BATCHING PLANT (POINT SOURCE)

EMISSION SOURCE OF CONCRETE BATCHING PLANT (AREA SOURCE):-

- EP14 EP21
- EP15 EP22
- EP16 EP23
- EP17

EMISSION SOURCE OF WKCD PROJECT (LINE SOURCE):-

- CBH1 CBX1
- CBH2 CBX2
- CBH3 CBX3
- CBH4 CBX4

GROUND LEVEL ZONE:-

- ZONE 1 ZONE A (THE PARK)
- ZONE 2 ZONE B (THE PARK)
- ZONE 3 ZONE C (THE PARK)
- ZONE 4 EXCLUDED AREAS
- ZONE 5 (HOTEL)

P2	MAY 13	MING	GENERAL REVISION	EY	AFK
P1	SEP 12	MING	FIRST ISSUE	HC	AFK
Rev	Date	Drawn	Description	Ch'kd	App'd

Client

WEST KOWLOON CULTURAL DISTRICT AUTHORITY

20/F Two Landmark East
100 How Ming Street
Kowloon, Kowloon
Hong Kong
T +852 2828 5757
F +852 2827 1823
www.mottmac.com.hk

Project

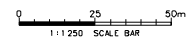
PROJECT CONSULTANCY STUDY FOR WEST KOWLOON CULTURAL DISTRICT DEVELOPMENT PLAN

Title

LOCATIONS OF POTENTIAL CONSTRUCTION DUST SOURCES FROM CONCRETE BATCHING PLANT AND ITS HAUL ROADS IN YEAR 2017 - 2020

Designed	HC	Eng check	FN
Drawn	MING	Coordination	EC
Dwg check	HC	Approved	AFK
Scale at A1	Status	Rev	
1:1250	PRE	P2	

Drawing Number **FIGURE 3.3g**





- LEGEND:**
- PROJECT BOUNDARY
 - EXTERNAL CONNECTIONS (INDICATIVE SUBJECT TO FUTURE DESIGN & ARRANGEMENT)
 - BASEMENT LEVEL ZONE
 - EMISSION SOURCE OF WKCD PROJECT - GROUND LEVEL WORKS (AREA SOURCE)
 - EMISSION SOURCE OF WKCD PROJECT - BASEMENT WORKS (AREA SOURCE)
 - CONCRETE BATCHING PLANT OF WKCD PROJECT
- GROUND LEVEL ZONE:-**
- ZONE 1
 - ZONE 2
 - ZONE 3
 - ZONE 4
 - ZONE 5 (HOTEL)
 - ZONE A (THE PARK)
 - ZONE B (THE PARK)
 - ZONE C (THE PARK)
 - EXCLUDED AREAS

P3	JUN 13	MING	GENERAL REVISION	AM	AFK
P2	MAY 13	MING	GENERAL REVISION	EY	AFK
P1	SEP 12	MING	FIRST ISSUE	HC	AFK
Rev	Date	Drawn	Description	Ch'kd	App'd

Client
WEST KOWLOON CULTURAL DISTRICT AUTHORITY

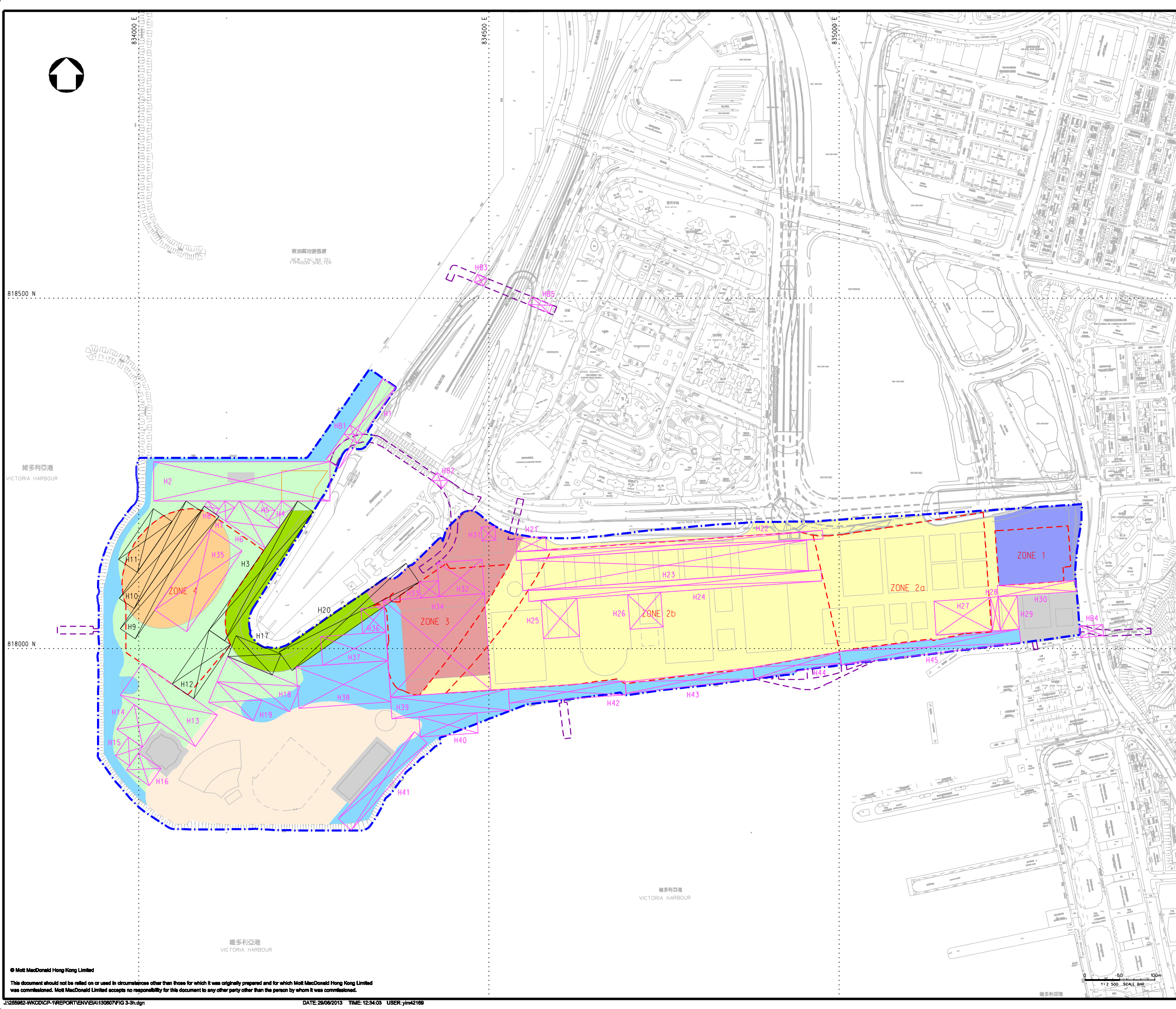
20/F Two Landmark East
100 How Ming Street
Kowloon, Kowloon
Hong Kong
T +852 2828 5757
F +852 2827 1823
www.mottmac.com.hk

Project
PROJECT CONSULTANCY STUDY FOR WEST KOWLOON CULTURAL DISTRICT DEVELOPMENT PLAN

Title
LOCATIONS OF POTENTIAL CONSTRUCTION DUST SOURCES (TIER 1) IN YEAR 2017

Designed	HC	Eng check	FN
Drawn	MING	Coordination	EC
Dwg check	HC	Approved	AFK
Scale at A1	Status	Rev	
1:2500	PRE	P3	

Drawing Number **FIGURE 3.3h**





- LEGEND:**
- PROJECT BOUNDARY
 - EXTERNAL CONNECTIONS (INDICATIVE SUBJECT TO FUTURE DESIGN & ARRANGEMENT)
 - BASEMENT LEVEL ZONE
 - EMISSION SOURCE OF WKCD PROJECT - GROUND LEVEL WORKS (AREA SOURCE)
 - EMISSION SOURCE OF WKCD PROJECT - BASEMENT WORKS (AREA SOURCE)
 - CONCRETE BATCHING PLANT OF WKCD PROJECT
- GROUND LEVEL ZONE:-**
- ZONE 1
 - ZONE A (THE PARK)
 - ZONE 2
 - ZONE B (THE PARK)
 - ZONE 3
 - ZONE C (THE PARK)
 - ZONE 4
 - EXCLUDED AREAS
 - ZONE 5 (HOTEL)

P4	JUN 13	MING	GENERAL REVISION	AM	AFK
P3	MAY 13	MING	GENERAL REVISION	EY	AFK
P2	APR 13	MING	GENERAL REVISION	HC	AFK
P1	SEP 12	MING	FIRST ISSUE	HC	AFK
Rev	Date	Drawn	Description	Ch'kd	App'd

Client
WEST KOWLOON CULTURAL DISTRICT AUTHORITY



20F Two Landmark East
100 How Ming Street
Kowloon, Kowloon
Hong Kong
T +852 2828 5757
F +852 2827 1823
www.mottmac.com.hk









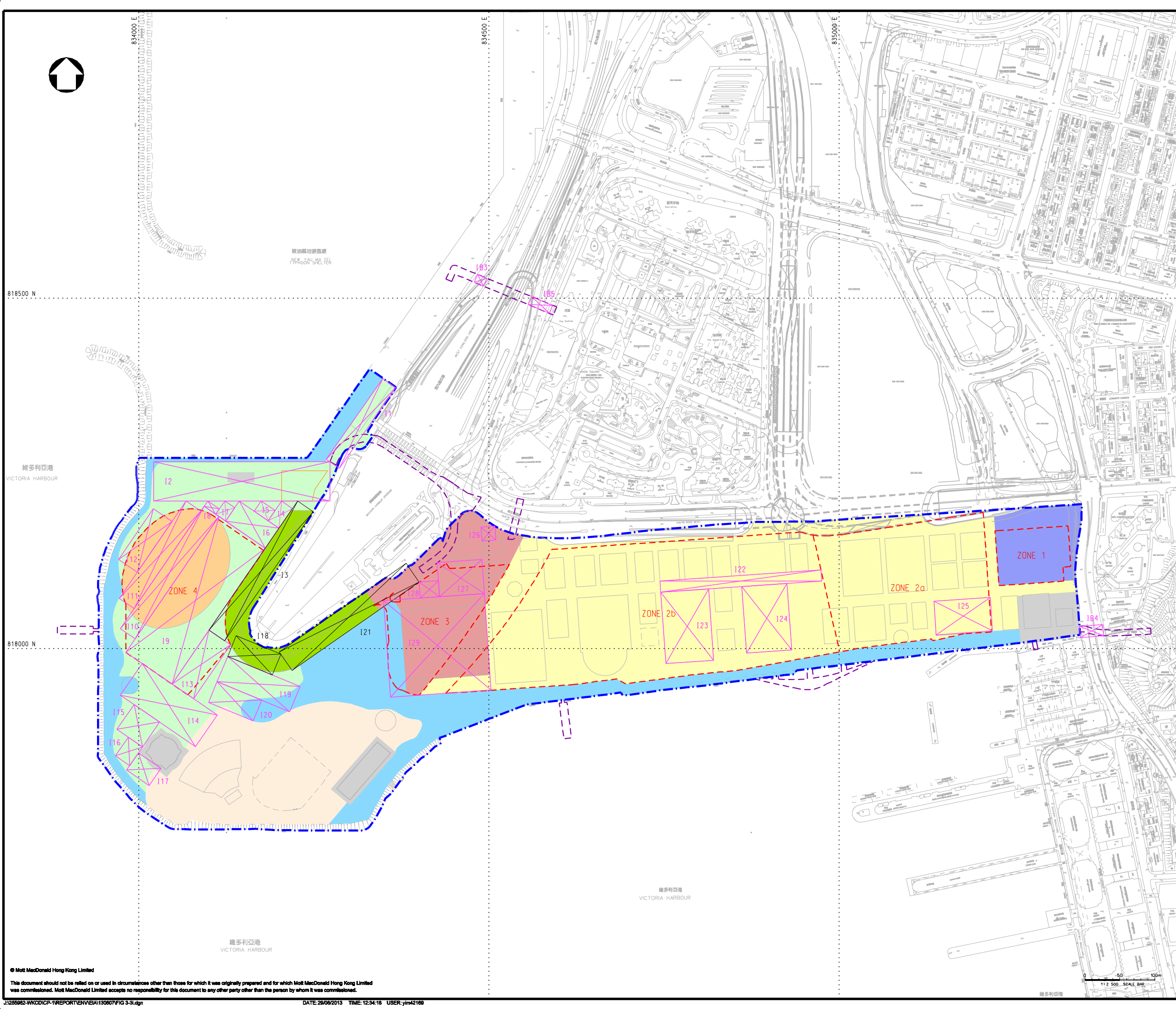



Project
PROJECT CONSULTANCY STUDY FOR WEST KOWLOON CULTURAL DISTRICT DEVELOPMENT PLAN

Title
LOCATIONS OF POTENTIAL CONSTRUCTION DUST SOURCES (TIER 1) IN YEAR 2018

Designed	HC	Eng check	FN
Drawn	MING	Coordination	EC
Dwg check	HC	Approved	AFK
Scale at A1	Status	Rev	
1:2500	PRE	P4	

Drawing Number **FIGURE 3.3i**





- LEGEND:**
- PROJECT BOUNDARY
 - EXTERNAL CONNECTIONS (INDICATIVE SUBJECT TO FUTURE DESIGN & ARRANGEMENT)
 - BASEMENT LEVEL ZONE
 - EMISSION SOURCE OF WKCD PROJECT - GROUND LEVEL WORKS (AREA SOURCE)
 - CONCRETE BATCHING PLANT OF WKCD PROJECT
- GROUND LEVEL ZONE:-**
- | | |
|---|---|
| ZONE 1 | ZONE A (THE PARK) |
| ZONE 2 | ZONE B (THE PARK) |
| ZONE 3 | ZONE C (THE PARK) |
| ZONE 4 | EXCLUDED AREAS |
| ZONE 5 (HOTEL) | |

P3	JUN 13	MING	GENERAL REVISION	AM	AFK
P2	MAY 13	MING	GENERAL REVISION	EY	AFK
P1	SEP 12	MING	FIRST ISSUE	HC	AFK
Rev	Date	Drawn	Description	Ch'kd	App'd

Client

WEST KOWLOON CULTURAL DISTRICT AUTHORITY



20/F Two Landmark East
100 How Ming Street
Kowloon, Kowloon
Hong Kong
T +852 2828 5757
F +852 2827 1823
www.mottmac.com.hk

Project

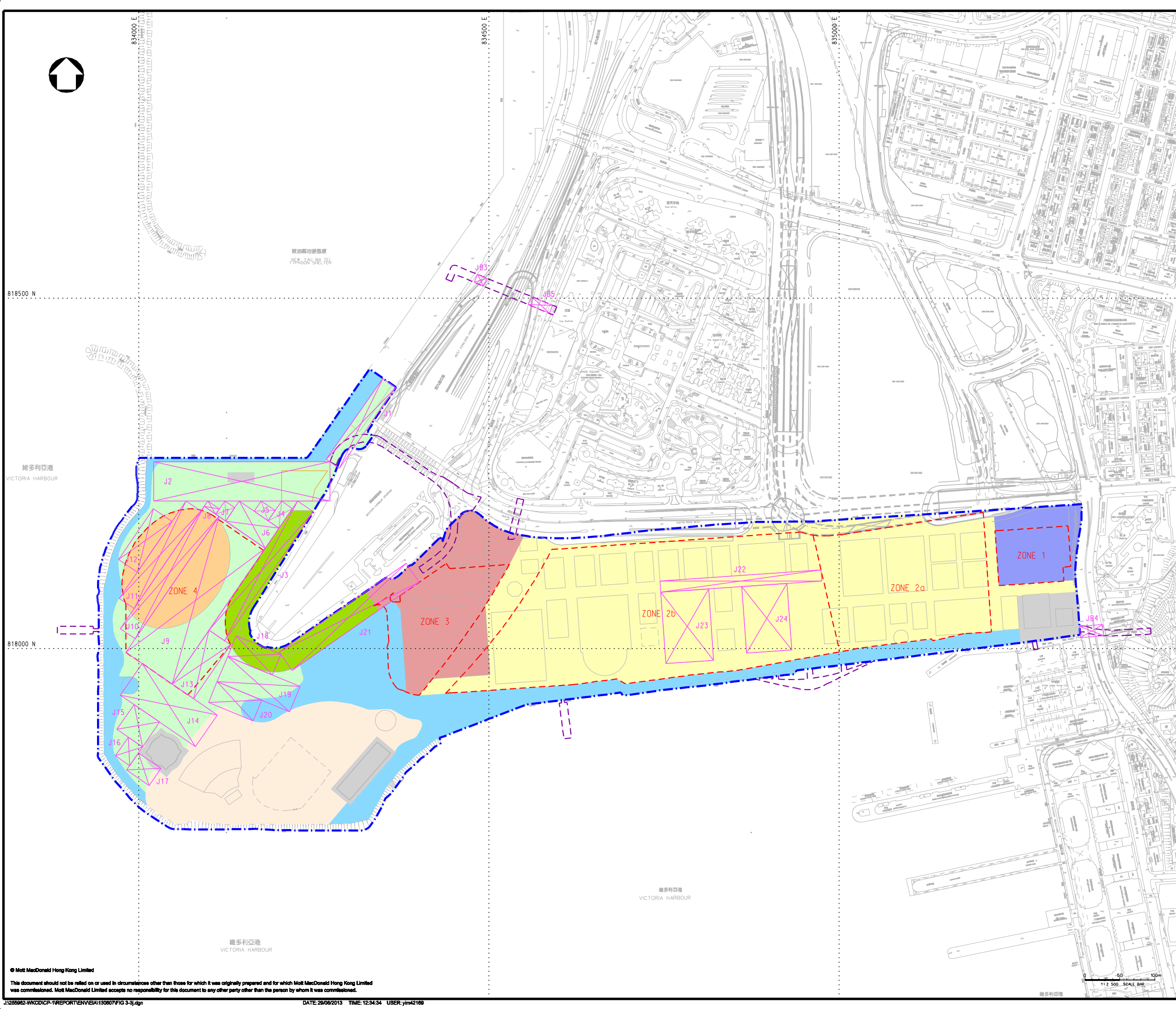
PROJECT CONSULTANCY STUDY FOR WEST KOWLOON CULTURAL DISTRICT DEVELOPMENT PLAN

Title

LOCATIONS OF POTENTIAL CONSTRUCTION DUST SOURCES (TIER 1) IN YEAR 2019

Designed	HC	Eng check	FN
Drawn	MING	Coordination	EC
Dwg check	HC	Approved	AFK
Scale at A1	Status	Rev	
1:2500	PRE	P3	

Drawing Number **FIGURE 3.3j**





- LEGEND:**
- PROJECT BOUNDARY
 - EXTERNAL CONNECTIONS (INDICATIVE SUBJECT TO FUTURE DESIGN & ARRANGEMENT)
 - BASEMENT LEVEL ZONE
 - EMISSION SOURCE OF WKCD PROJECT - GROUND LEVEL WORKS (AREA SOURCE)
 - CONCRETE BATCHING PLANT OF WKCD PROJECT
- GROUND LEVEL ZONE:-**
- | | |
|---|--|
| ZONE 1 | ZONE A (THE PARK) |
| ZONE 2 | ZONE B (THE PARK) |
| ZONE 3 | ZONE C (THE PARK) |
| ZONE 4 | EXCLUDED AREAS |
| ZONE 5 (HOTEL) | |

P3	JUL 13	MING	GENERAL REVISION	HC	AFK
P2	MAY 13	MING	GENERAL REVISION	EY	AFK
P1	SEP 12	MING	FIRST ISSUE	HC	AFK
Rev	Date	Drawn	Description	Ch'kd	App'd

Client

WEST KOWLOON CULTURAL DISTRICT AUTHORITY



20F Two Landmark East
100 How Ming Street
Kowloon, Kowloon
Hong Kong
T +852 2828 5757
F +852 2827 1823
www.mottmac.com.hk

Project

PROJECT CONSULTANCY STUDY FOR WEST KOWLOON CULTURAL DISTRICT DEVELOPMENT PLAN

Title

LOCATIONS OF POTENTIAL CONSTRUCTION DUST SOURCES (TIER 1) IN YEAR 2020

Designed	HC	Eng check	FN
Drawn	MING	Coordination	EC
Dwg check	HC	Approved	AFK
Scale at A1	Status	Rev	
1:2500	PRE	P3	

Drawing Number **FIGURE 3.3K**

