



- LEGEND:**
- PROJECT BOUNDARY
 - EXTERNAL CONNECTIONS (INDICATIVE SUBJECT TO FUTURE DESIGN & ARRANGEMENT)
 - BASEMENT LEVEL ZONE
 - EMISSION SOURCE OF WKCD PROJECT - GROUND LEVEL WORKS (AREA SOURCE)
 - EMISSION SOURCE OF CONCURRENT PROJECT (AREA SOURCE)
 - 10% OF ACTIVE AREA NEAREST TO THE SELECTIVE ASRS
 - EMISSION SOURCE OF WKCD PROJECT (LINE SOURCE)
 - CONCRETE BATCHING PLANT OF WKCD PROJECT
 - EMISSION SOURCE OF WKCD PROJECT - BARGING POINT

- GROUND LEVEL ZONE:-**
- ZONE 1
 - ZONE A (THE PARK)
 - ZONE 2
 - ZONE B (THE PARK)
 - ZONE 3
 - ZONE C (THE PARK)
 - ZONE 4
 - EXCLUDED AREAS
 - ZONE 5 (HOTEL)

P4	JUN 13	MING	GENERAL REVISION	AM	AFK
P3	MAY 13	MING	GENERAL REVISION	EY	AFK
P2	FEB 13	MING	GENERAL REVISION	MCD	AFK
P1	SEP 12	MING	FIRST ISSUE	HC	AFK
Rev	Date	Drawn	Description	Ch'kd	App'd

WEST KOWLOON CULTURAL DISTRICT AUTHORITY

20/F Two Landmark East
100 How Ming Street
Kowloon, Kowloon
Hong Kong
T +852 2828 5757
F +852 2827 1823
www.mottmac.com.hk

Project
PROJECT CONSULTANCY STUDY FOR WEST KOWLOON CULTURAL DISTRICT DEVELOPMENT PLAN

Title
LOCATIONS OF POTENTIAL CONSTRUCTION DUST SOURCES (TIER 2) FOR ASR P01d-1 AT THE END OF YEAR 2015

Designed	HC	Eng check	MCD
Drawn	MING	Coordination	EC
Dwg check	HC	Approved	AFK
Scale at A1	Status	Rev	
1:2500	PRE	P4	

Drawing Number FIGURE 3.4a

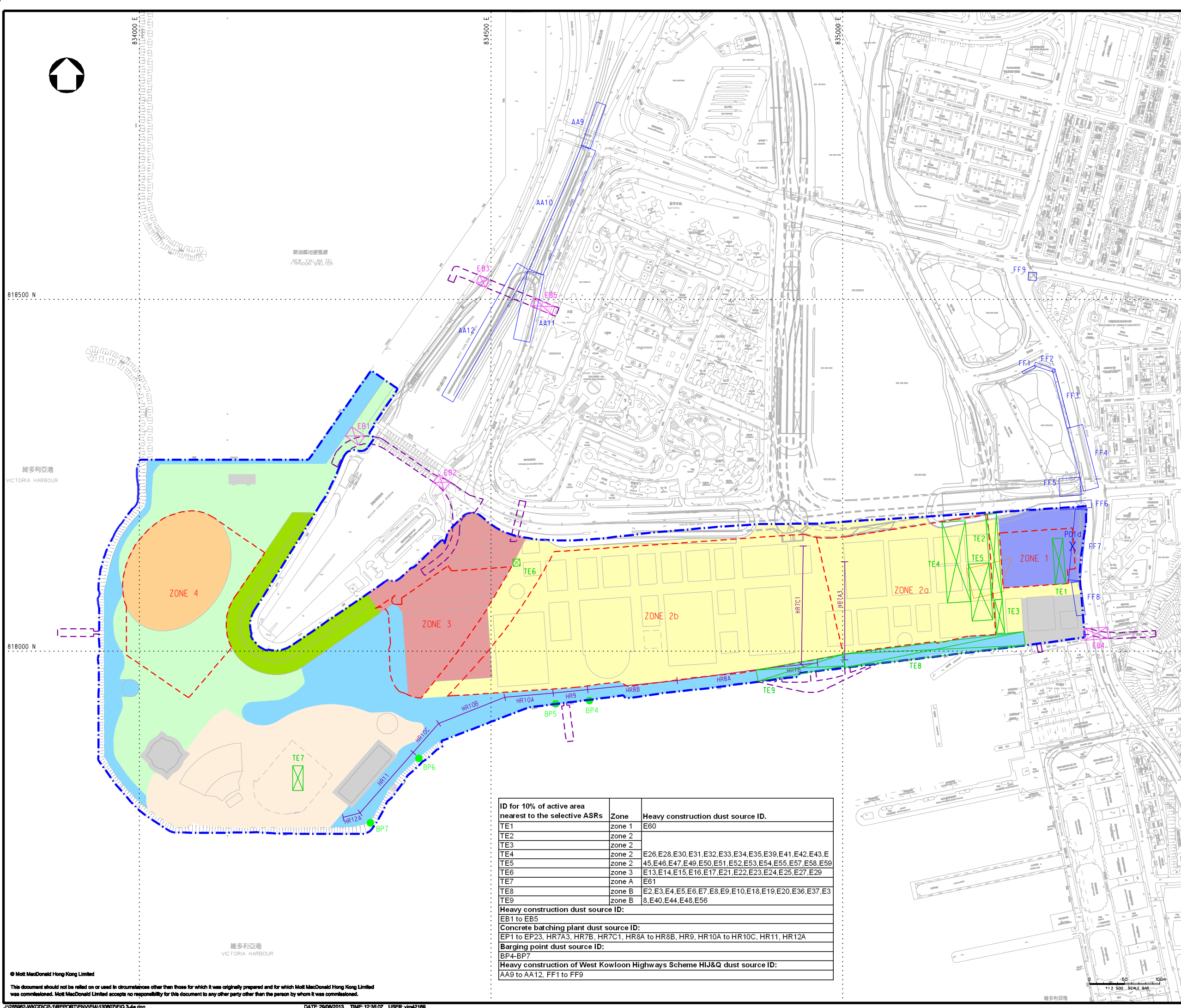
ID for 10% of active area nearest to the selective ASRs	Zone	Heavy construction dust source ID.
TE1	zone 1	E60
TE2	zone 2	
TE3	zone 2	
TE4	zone 2	E26, E28, E30, E31, E32, E33, E34, E35, E39, E41, E42, E43, E45, E46, E47, E49, E50, E51, E52, E53, E54, E55, E57, E58, E59
TE5	zone 2	
TE6	zone 3	E13, E14, E15, E16, E17, E21, E22, E23, E24, E25, E27, E29
TE7	zone A	E61
TE8	zone B	E2, E3, E4, E5, E6, E7, E8, E9, E10, E18, E19, E20, E36, E37, E38, E40, E44, E48, E56
TE9	zone B	

Heavy construction dust source ID:
EB1 to EB5

Concrete batching plant dust source ID:
EP1 to EP23, HR7A3, HR7B, HR7C1, HR8A to HR8B, HR9, HR10A to HR10C, HR11, HR12A

Barging point dust source ID:
BP4-BP7

Heavy construction of West Kowloon Highways Scheme HIJ&Q dust source ID:
AA9 to AA12, FF1 to FF9





- LEGEND:**
- PROJECT BOUNDARY
 - EXTERNAL CONNECTIONS (INDICATIVE SUBJECT TO FUTURE DESIGN & ARRANGEMENT)
 - BASEMENT LEVEL ZONE
 - EMISSION SOURCE OF WKCD PROJECT - GROUND LEVEL WORKS (AREA SOURCE)
 - EMISSION SOURCE OF CONCURRENT PROJECT (AREA SOURCE)
 - 10% OF ACTIVE AREA NEAREST TO THE SELECTIVE ASRS
 - EMISSION SOURCE OF WKCD PROJECT (LINE SOURCE)
 - CONCRETE BATCHING PLANT OF WKCD PROJECT
 - EMISSION SOURCE OF WKCD PROJECT - BARGING POINT

- GROUND LEVEL ZONE:-**
- ZONE 1
 - ZONE A (THE PARK)
 - ZONE 2
 - ZONE B (THE PARK)
 - ZONE 3
 - ZONE C (THE PARK)
 - ZONE 4
 - EXCLUDED AREAS
 - ZONE 5 (HOTEL)

P3	JUL 13	MING	GENERAL REVISION	AM	AFK
P2	MAY 13	MING	GENERAL REVISION	EY	AFK
P1	SEP 12	MING	FIRST ISSUE	HC	AFK
Rev	Date	Drawn	Description	Ch'kd	App'd

Client
WEST KOWLOON CULTURAL DISTRICT AUTHORITY

Mott MacDonald

20F Two Landmark East
100 How Ming Street
Kowloon, Kowloon
Hong Kong
T +852 2828 5757
F +852 2827 1823
www.mottmac.com.hk

ARTEC IMG Artists Lord

TFP | FARRELLS G | H | K

creative thinking positive solutions warhola limited

DONNELL

LD ASIA BMT

Project
PROJECT CONSULTANCY STUDY FOR WEST KOWLOON CULTURAL DISTRICT DEVELOPMENT PLAN

Title
LOCATIONS OF POTENTIAL CONSTRUCTION DUST SOURCES (TIER 2) FOR ASR P53-1 AT THE END OF YEAR 2015

Designed	HC	Eng check	FN
Drawn	MING	Coordination	EC
Dwg check	HC	Approved	AFK
Scale at A1	Status	Rev	
1:2500	PRE	P3	

Drawing Number **FIGURE 3.4b**

ID for 10% of active area nearest to the selective ASRs	Zone	Heavy construction dust source ID.
Te1	zone 1	E60
Te2	zone 2	
Te3	zone 2	E26, E28, E30, E31, E32, E33, E34, E35, E39, E41, E42, E43, E45, E46, E47, E49, E50, E51, E52, E53, E54, E55, E57, E58, E59
Te4	zone 3	E12, E13, E14, E15, E16, E17, E21, E22, E23, E24, E25, E27, E29
Te5	zone B	
Te6	zone B	E1, E2, E3, E4, E5, E6, E7, E8, E9, E10, E18, E19, E20, E36, E37
Te7	zone B	E38, E40, E44, E48, E56
Heavy construction dust source ID:		
EB1 to EB5		
Concrete batching plant dust source ID:		
EP1 to EP23, HR7A3, HR7B, HR7C1, HR8A to HR8B, HR9, HR10A to HR10C, HR11, HR12A		
Barging point dust source ID:		
BP4-BP7		
Heavy construction OF West Kowloon Highways Scheme HIJ&Q dust source ID:		
AA9 to AA12, FF1 to FF9		



- LEGEND:**
- PROJECT BOUNDARY
 - EXTERNAL CONNECTIONS (INDICATIVE SUBJECT TO FUTURE DESIGN & ARRANGEMENT)
 - BASEMENT LEVEL ZONE
 - EMISSION SOURCE OF WKCD PROJECT - GROUND LEVEL WORKS (AREA SOURCE)
 - 25% OF ACTIVE AREA NEAREST TO THE SELECTIVE ASRs
 - EMISSION SOURCE OF WKCD PROJECT (LINE SOURCE)
 - CONCRETE BATCHING PLANT OF WKCD PROJECT
 - EMISSION SOURCE OF WKCD PROJECT - BARGING POINT

- GROUND LEVEL ZONE:-**
- ZONE 1
 - ZONE A (THE PARK)
 - ZONE 2
 - ZONE B (THE PARK)
 - ZONE 3
 - ZONE C (THE PARK)
 - ZONE 4
 - EXCLUDED AREAS
 - ZONE 5 (HOTEL)

P4	JUN 13	MING	GENERAL REVISION	AM	AFK
P3	MAY 13	MING	GENERAL REVISION	EY	AFK
P2	APR 13	MING	GENERAL REVISION	HC	AFK
P1	SEP 12	MING	FIRST ISSUE	HC	AFK
Rev	Date	Drawn	Description	Ch'kd	App'd

WEST KOWLOON CULTURAL DISTRICT AUTHORITY



20F Two Landmark East
100 How Ming Street
Kowloon, Kowloon
Hong Kong
T +852 2828 5757
F +852 2827 1823
www.mottmac.com.hk

















PROJECT CONSULTANCY STUDY FOR WEST KOWLOON CULTURAL DISTRICT DEVELOPMENT PLAN

TITLE
LOCATIONS OF POTENTIAL CONSTRUCTION DUST SOURCES (TIER 2) FOR ASR P01a-1, P01b-1, P01c-1 AND P01d-1 AT THE END OF YEAR 2016

Designed	HC	Eng check	MCD
Drawn	MING	Coordination	EC
Dwg check	HC	Approved	AFK
Scale at A1	Status	Rev	
1:2500	PRE	P4	

Drawing Number **FIGURE 3.4c**

ID for 25% of active area nearest to the selective ASRs	Zone	Heavy construction dust source ID.
TF1	Zone 2	
TF2	Zone 2	
TF3	Zone 2	
TF4	Zone 2	
TF5	Zone 2	
TF6	Zone 2	
TF7	Zone 2	F19,F20,F23,F24,F25,F27,F28,F29,F31,F32,F33,F34,F35
TF8	zone 3	
TF9	zone 3	
TF10	zone 3	
TF11	zone 3	F8,F9,F10,F11,F12
TF12	zone 4	F7
TF13	zone B	
TF14	zone B	
TF15	zone B	
TF16	zone B	F1,F2,F3,F4,F5,F6,F13,F14,F15,F16,F17,F18,F21,F22,F26,F30
TF17	zone 1	F36

Heavy construction dust source ID:
FB1 to FB5

Concrete batching plant dust source ID:
EP1 to EP23, HR7A to HR7C, HR8A to HR8B, HR9, HR10A to HR10C, HR11, HR12A

Barging point dust source ID:
BP4 to BP7



- LEGEND:**
- - - PROJECT BOUNDARY
 - - - EXTERNAL CONNECTIONS (INDICATIVE SUBJECT TO FUTURE DESIGN & ARRANGEMENT)
 - - - BASEMENT LEVEL ZONE
 - EMISSION SOURCE OF WKCD PROJECT - GROUND LEVEL WORKS (AREA SOURCE)
 - 25% OF ACTIVE AREA NEAREST TO THE SELECTIVE ASRs
 - EMISSION SOURCE OF WKCD PROJECT (LINE SOURCE)
 - CONCRETE BATCHING PLANT OF WKCD PROJECT
 - EMISSION SOURCE OF WKCD PROJECT - BARGING POINT

- GROUND LEVEL ZONE:-**
- | | |
|--|---|
| ZONE 1 | ZONE A (THE PARK) |
| ZONE 2 | ZONE B (THE PARK) |
| ZONE 3 | ZONE C (THE PARK) |
| ZONE 4 | EXCLUDED AREAS |
| ZONE 5 (HOTEL) | |

P4	JUN 13	MING	GENERAL REVISION	AM	AFK
P3	MAY 13	MING	GENERAL REVISION	EY	AFK
P2	APR 13	MING	GENERAL REVISION	MCD	AFK
P1	SEP 12	MING	FIRST ISSUE	HC	AFK
Rev	Date	Drawn	Description	Ch'kd	App'd

Client

WEST KOWLOON CULTURAL DISTRICT AUTHORITY

20F Two Landmark East
100 How Ming Street
Kwun Tong, Kowloon
Hong Kong
T +852 2828 5757
F +852 2827 1823
www.mottmac.com.hk

Project

PROJECT CONSULTANCY STUDY FOR WEST KOWLOON CULTURAL DISTRICT DEVELOPMENT PLAN

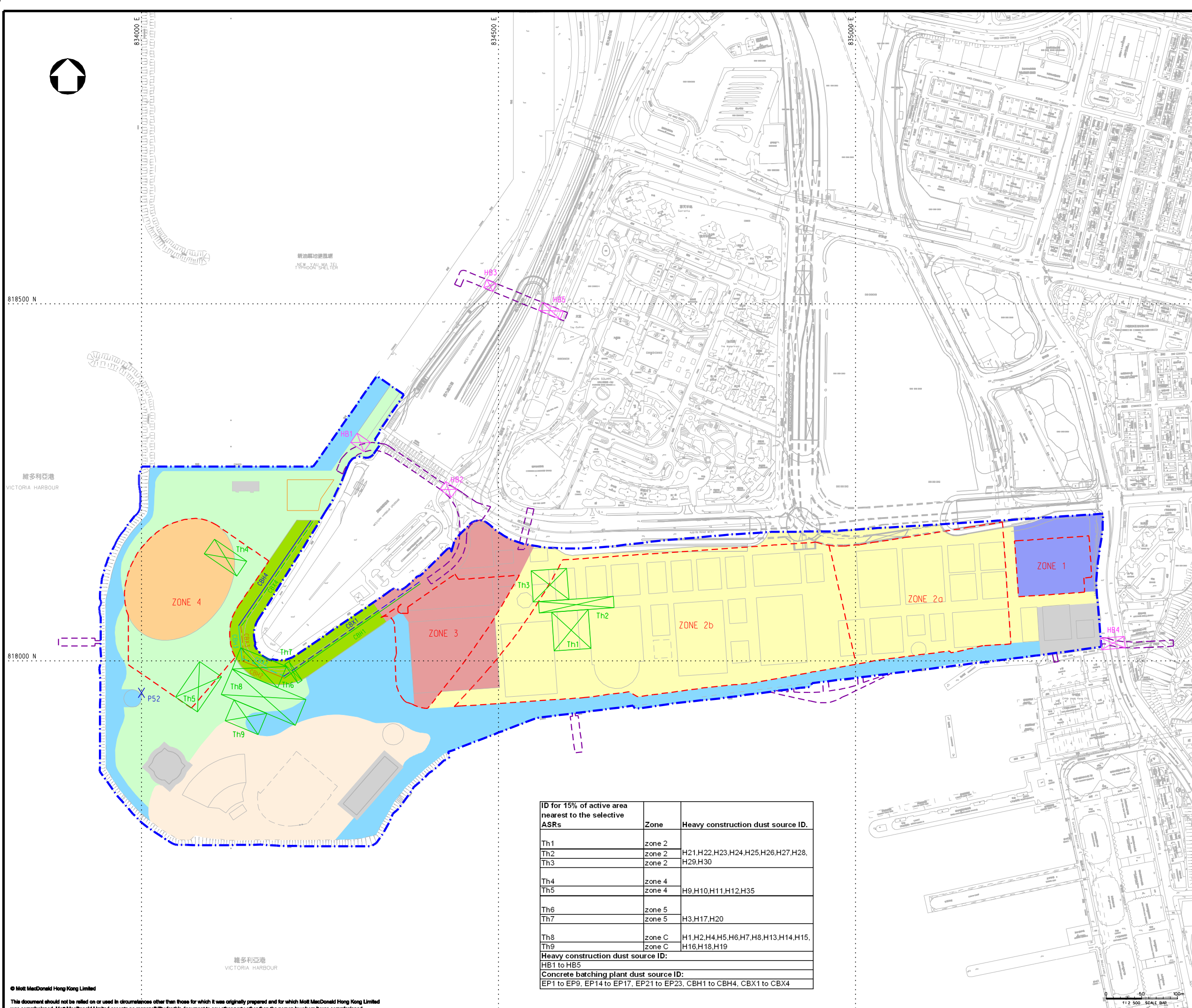
Title

LOCATIONS OF POTENTIAL CONSTRUCTION DUST SOURCES (TIER 2) FOR ASR P53-1 AT THE END OF YEAR 2016

Designed	HC	Eng check	MCD
Drawn	MING	Coordination	EC
Dwg check	HC	Approved	AFK
Scale at A1	Status	Rev	
1:2500	PRE	P4	

Drawing Number **FIGURE 3.4d**

ID for 25% of active area nearest to the selective ASRs	Zone	Heavy construction dust source ID.
Tf1	Zone 2	F19,F20,F23,F24,F25,F27,F28,F29,F31,F32,F33,F34,F35
Tf2	Zone 3	F8,F9,F10,F11,F12
Tf3	Zone 4	F7
Tf4	Zone B	
Tf5	Zone B	F1,F2,F3,F4,F5,F6,F13,F14,F15,F16,F17,F18,F21,F22,F26,F30
Tf6	Zone 1	F36
Heavy construction dust source ID: FB1 to FB5		
Concrete batching plant dust source ID: EP1 to EP23, HR7A to HR7C, HR8A to HR8B, HR9, HR10A to HR10C, HR11, HR12A		
Barging point dust source ID: BP4 to BP7		



- LEGEND:**
- PROJECT BOUNDARY
 - EXTERNAL CONNECTIONS (INDICATIVE SUBJECT TO FUTURE DESIGN & ARRANGEMENT)
 - BASEMENT LEVEL ZONE
 - EMISSION SOURCE OF WKCD PROJECT - GROUND LEVEL WORKS (AREA SOURCE)
 - 15% OF ACTIVE AREA NEAREST TO THE SELECTIVE ASRs
 - CONCRETE BATCHING PLANT OF WKCD PROJECT

- EMISSION SOURCE OF WKCD PROJECT (LINE SOURCE):-**
- CBH1 --- CBX1
 - CBH2 --- CBX2
 - CBH3 --- CBX3
 - CBH4 --- CBX4

- GROUND LEVEL ZONE:-**
- ZONE 1
 - ZONE 2
 - ZONE 3
 - ZONE 4
 - ZONE 5 (HOTEL)
 - ZONE A (THE PARK)
 - ZONE B (THE PARK)
 - ZONE C (THE PARK)
 - EXCLUDED AREAS

P4	JUL 13	MING	GENERAL REVISION	HC	AFK
P3	MAY 13	MING	GENERAL REVISION	EY	AFK
P2	APR 13	MING	GENERAL REVISION	MCD	AFK
P1	SEP 12	MING	FIRST ISSUE	HC	AFK
Rev	Date	Drawn	Description	Ch'kd	App'd

WEST KOWLOON CULTURAL DISTRICT AUTHORITY

Mott MacDonald

20F Two Landmark East
100 How Ming Street
Kowloon, Kowloon
Hong Kong
T +852 2828 5757
F +852 2827 1823
www.mottmac.com.hk

ARTEC **IMG Artists** **Lord**

TFP | FARRELLS **G | H | K**

creative thinking positive solutions **warthog limited** **WMA**

DONNELL **LD ASIA** **BMT**

PROJECT CONSULTANCY STUDY FOR WEST KOWLOON CULTURAL DISTRICT DEVELOPMENT PLAN

LOCATIONS OF POTENTIAL CONSTRUCTION DUST SOURCES (TIER 2) FOR ASR P39-1 AND P52-1 AT THE END OF YEAR 2017

ID for 15% of active area nearest to the selective ASRs	Zone	Heavy construction dust source ID.
Th1	zone 2	H21.H22.H23.H24.H25.H26.H27.H28.
Th2	zone 2	H29.H30
Th3	zone 2	H29.H30
Th4	zone 4	H9.H10.H11.H12.H35
Th5	zone 4	H9.H10.H11.H12.H35
Th6	zone 5	H3.H17.H20
Th7	zone 5	H3.H17.H20
Th8	zone C	H1.H2.H4.H5.H6.H7.H8.H13.H14.H15.
Th9	zone C	H16.H18.H19
Heavy construction dust source ID:		
HB1 to HB5		
Concrete batching plant dust source ID:		
EP1 to EP9, EP14 to EP17, EP21 to EP23, CBH1 to CBH4, CBX1 to CBX4		

Designed	HC	Eng check	MCD
Drawn	MING	Coordination	EC
Dwg check	HC	Approved	AFK
Scale at A1	Status	Rev	
1:2500	PRE	P4	
Drawing Number	FIGURE 3.4e		



- LEGEND:**
- PROJECT BOUNDARY
 - EXTERNAL CONNECTIONS (INDICATIVE SUBJECT TO FUTURE DESIGN & ARRANGEMENT)
 - BASEMENT LEVEL ZONE
 - EMISSION SOURCE OF WKCD PROJECT - GROUND LEVEL WORKS (AREA SOURCE)
 - 10% OF ACTIVE AREA NEAREST TO THE SELECTIVE ASRs
 - CONCRETE BATCHING PLANT OF WKCD PROJECT

- EMISSION SOURCE OF WKCD PROJECT (LINE SOURCE):-**
- CBH1
 - CBH2
 - CBH3
 - CBH4
 - CBX1
 - CBX2
 - CBX3
 - CBX4

- GROUND LEVEL ZONE:-**
- ZONE 1
 - ZONE 2
 - ZONE 3
 - ZONE 4
 - ZONE 5 (HOTEL)
 - ZONE A (THE PARK)
 - ZONE B (THE PARK)
 - ZONE C (THE PARK)
 - EXCLUDED AREAS

P4	JUN 13	MING	GENERAL REVISION	AM	AFK
P3	MAY 13	MING	GENERAL REVISION	EY	AFK
P2	APR 13	MING	GENERAL REVISION	HC	AFK
P1	SEP 12	MING	FIRST ISSUE	HC	AFK
Rev	Date	Drawn	Description	Ch'kd	App'd

WEST KOWLOON CULTURAL DISTRICT AUTHORITY

20F Two Landmark East
100 How Ming Street
Kowloon, Kowloon
Hong Kong
T +852 2828 5757
F +852 2827 1823
www.mottmac.com.hk

PROJECT CONSULTANCY STUDY FOR WEST KOWLOON CULTURAL DISTRICT DEVELOPMENT PLAN

LOCATIONS OF POTENTIAL CONSTRUCTION DUST SOURCES (TIER 2) FOR ASR P52-1 AT THE END OF YEAR 2018

Designed	HC	Eng check	MCD
Drawn	MING	Coordination	EC
Dwg check	HC	Approved	AFK
Scale at A1	Status	Rev	
1:2500	PRE	P4	

Drawing Number **FIGURE 3.4f**

ID for 10% of active area nearest to the selective ASRs	Zone	Heavy construction dust source ID.
Ti1	Zone 2	I22,I23,I24,I25
Ti2	Zone 4	I10,I11,I12
Ti3	Zone 5	
Ti4	Zone 5	I3,I8,I21
Ti5	Zone C	
Ti6	Zone C	I1,I2,I4,I5,I6,I7,I13,I14
Ti7	Zone 3	I26,I27,I28,I29

Heavy construction dust source ID.: IB3 to IB5
Concrete batching plant dust source ID.: EP1 to EP9, EP14 to EP17, EP21 to EP23, CBH1 to CBH4, CBX1 to CBX4