

- LEGEND:**
- PROJECT BOUNDARY
 - BASEMENT LEVEL ZONE
 - FOOTBRIDGE *
 - FLYOVER *
 - POSSIBLE PIER / VIEWING PLATFORM *
 - CONCRETE BATCHING PLANT OF XRL PROJECT
 - PROPOSED FOOTPRINT BOUNDARY
 - EXISTING FACILITIES
 - XRL WORKS AREA
 - ▨ AT GRADE CONSTRUCTION AREA
 - BARGING POINT OF XRL PROJECT
 - ▨ AST AIRBORNE NOISE SENSITIVE RECEIVERS (EXISTING)
 - ▨ RD AIRBORNE NOISE SENSITIVE RECEIVERS (PLANNED)
- GROUND LEVEL ZONE:-**
- ▨ ZONE 1
 - ▨ ZONE 2
 - ▨ ZONE 3
 - ▨ ZONE 4
 - ▨ ZONE 5 (HOTEL)
 - ▨ ZONE A (THE PARK)
 - ▨ ZONE B (THE PARK)
 - ▨ ZONE C (THE PARK)
 - ▨ EXCLUDED AREAS
- REMARK:**
* INDICATIVE SUBJECT TO FUTURE DESIGN & ARRANGEMENT

P5	JUN 13	MING	GENERAL REVISION	HL	AFK
P4	MAY 13	MING	GENERAL REVISION	EY	AFK
Rev	Date	Drawn	Description	Ch'kd	App'd

Client
WEST KOWLOON CULTURAL DISTRICT AUTHORITY



20/F Two Landmark East
100 How Ming Street
Kowloon, Kowloon
Hong Kong
T +852 2828 5757
F +852 2827 1823
www.mottmac.com.hk

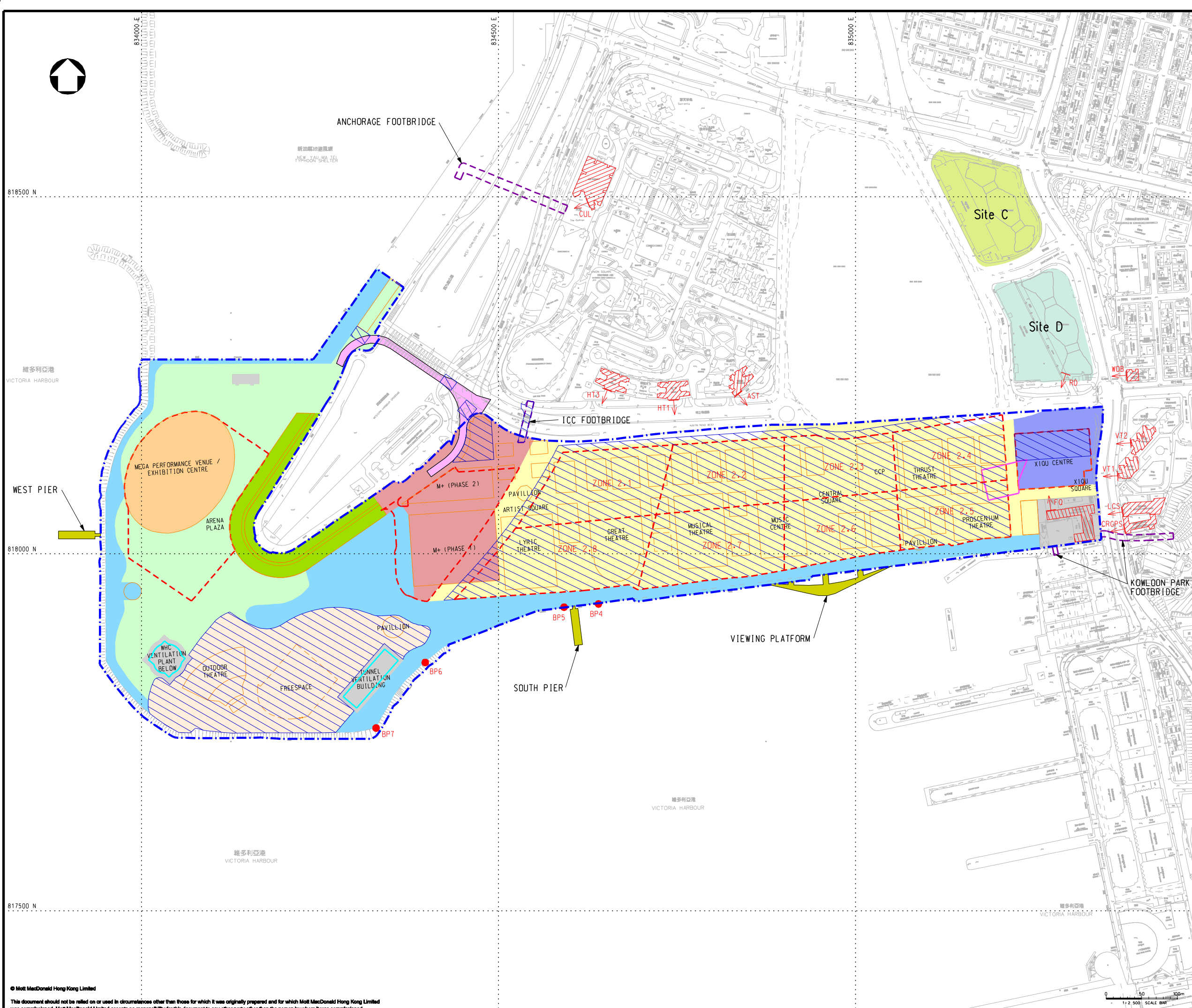


Project
PROJECT CONSULTANCY STUDY FOR WEST KOWLOON CULTURAL DISTRICT DEVELOPMENT PLAN

Title
LOCATIONS OF NOISE SENSITIVE RECEIVERS (NSRs) AND CONSTRUCTION AREA BETWEEN OCTOBER 2013 AND MARCH 2014

Designed	EY	Eng check	HL
Drawn	MING	Coordination	EC
Dwg check	EY	Approved	AFK
Scale at A1	1:2500	Status	PRE
Drawing Number		Rev	P5

FIGURE 4.2b



- LEGEND:**
- PROJECT BOUNDARY
 - BASEMENT LEVEL ZONE
 - FOOTBRIDGE *
 - FLYOVER *
 - POSSIBLE PIER / VIEWING PLATFORM *
 - CONCRETE BATCHING PLANT OF XRL PROJECT
 - PROPOSED FOOTPRINT BOUNDARY
 - EXISTING FACILITIES
 - AT GRADE CONSTRUCTION AREA
 - BARGING POINT OF XRL PROJECT
 - ▧ AST AIRBORNE NOISE SENSITIVE RECEIVERS (EXISTING)
 - ▧ RD AIRBORNE NOISE SENSITIVE RECEIVERS (PLANNED)
- GROUND LEVEL ZONE:-**
- ZONE 1
 - ZONE 2
 - ZONE 3
 - ZONE 4
 - ZONE 5 (HOTEL)
 - ZONE A (THE PARK)
 - ZONE B (THE PARK)
 - ZONE C (THE PARK)
 - EXCLUDED AREAS
- REMARK:**
* INDICATIVE SUBJECT TO FUTURE DESIGN & ARRANGEMENT

P5	JUN 13	MING	GENERAL REVISION	HL	AFK
P4	MAY 13	MING	GENERAL REVISION	EY	AFK
Rev	Date	Drawn	Description	Ch'kd	App'd

Client

WEST KOWLOON CULTURAL DISTRICT AUTHORITY

20/F Two Landmark East
100 How Ming Street
Kowloon Tong, Kowloon
Hong Kong
T +852 2828 5757
F +852 2827 1823
W www.motmac.com.hk

Project

PROJECT CONSULTANCY STUDY FOR WEST KOWLOON CULTURAL DISTRICT DEVELOPMENT PLAN

Title

LOCATIONS OF NOISE SENSITIVE RECEIVERS (NSRs) AND CONSTRUCTION AREA BETWEEN APRIL 2014 AND MARCH 2015

Designed	EY	Eng check	HL
Drawn	MING	Coordination	EC
Dwg check	EY	Approved	AFK
Scale at A1	1:2500	Status	PRE
Drawing Number		Rev	P5

FIGURE 4.2c



- LEGEND:**
- PROJECT BOUNDARY
 - BASEMENT LEVEL ZONE
 - FOOTBRIDGE *
 - FLYOVER *
 - POSSIBLE PIER / VIEWING PLATFORM *
 - CONCRETE BATCHING PLANT OF WKCD PROJECT
 - PROPOSED FOOTPRINT BOUNDARY
 - EXISTING FACILITIES
 - AT GRADE CONSTRUCTION AREA
 - BARGING POINT OF WKCD PROJECT
 - HT AIRBORNE NOISE SENSITIVE RECEIVERS (EXISTING)
 - RD AIRBORNE NOISE SENSITIVE RECEIVERS (PLANNED)
- GROUND LEVEL ZONE:-**
- ZONE 1
 - ZONE 2
 - ZONE 3
 - ZONE 4
 - ZONE 5 (HOTEL)
 - ZONE A (THE PARK)
 - ZONE B (THE PARK)
 - ZONE C (THE PARK)
 - EXCLUDED AREAS
- REMARK:**
* INDICATIVE SUBJECT TO FUTURE DESIGN & ARRANGEMENT

P5	JUL 13	MING	GENERAL REVISION	HL	AFK
P4	MAY 13	MING	GENERAL REVISION	EY	AFK
Rev	Date	Drawn	Description	Ch'kd	App'd

Client

WEST KOWLOON CULTURAL DISTRICT AUTHORITY

20/F Two Landmark East
100 How Ming Street
Kowloon Tong, Kowloon
Hong Kong
T +852 2828 5757
F +852 2827 1823
www.mottmac.com.hk

Project

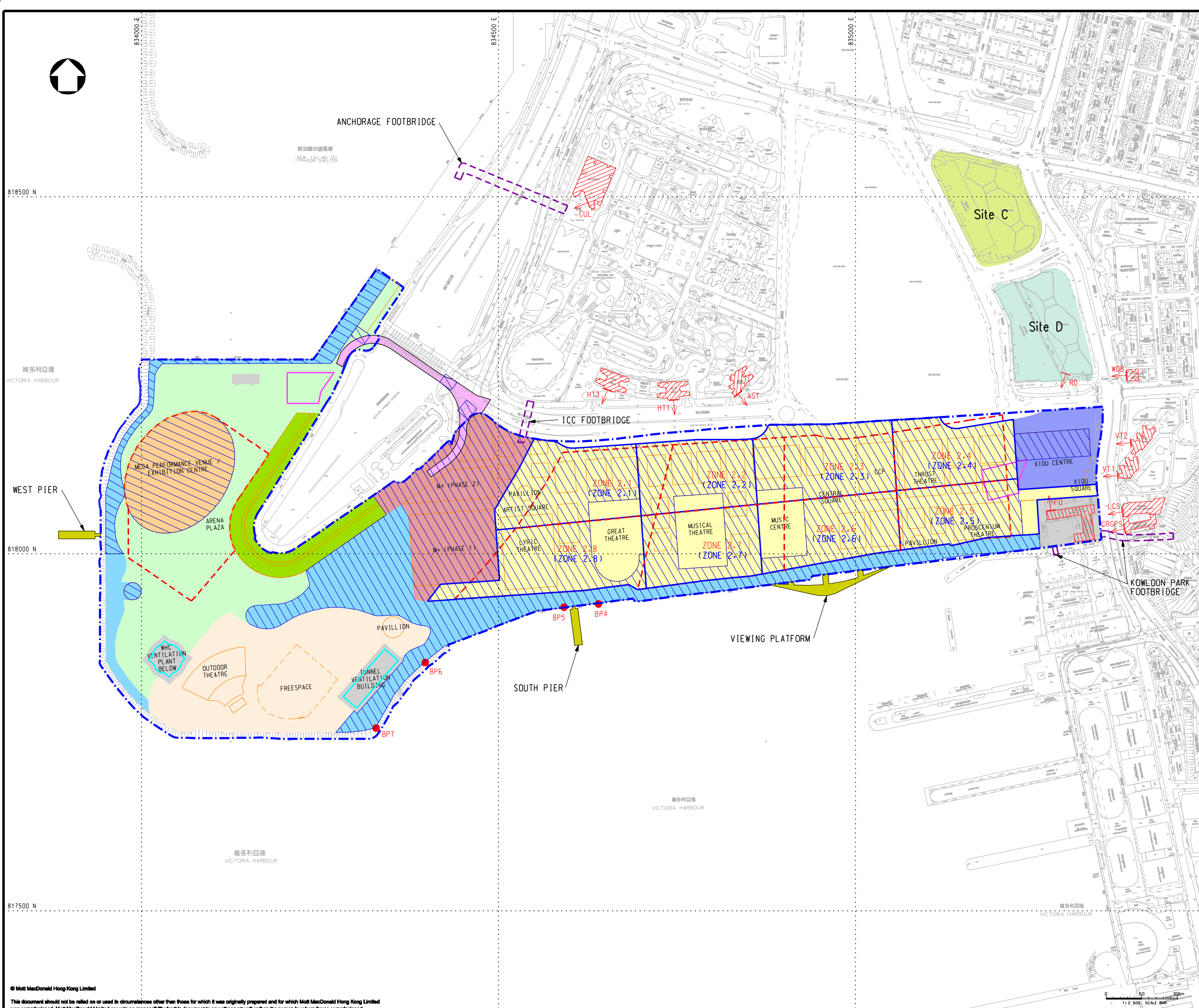
PROJECT CONSULTANCY STUDY FOR WEST KOWLOON CULTURAL DISTRICT DEVELOPMENT PLAN

Title

LOCATIONS OF NOISE SENSITIVE RECEIVERS (NSRs) AND CONSTRUCTION AREA BETWEEN APRIL 2015 AND MARCH 2016

Designed	EY	Eng check	HL
Drawn	MING	Coordination	EC
Dwg check	EY	Approved	AFK
Scale at A1	Status	Rev	
1:2500	PRE	P5	

Drawing Number **FIGURE 4.2d**



- LEGEND:**
- PROJECT BOUNDARY
 - BASEMENT LEVEL ZONE
 - FOOTBRIDGE *
 - FLYOVER *
 - POSSIBLE PIER / VIEWING PLATFORM *
 - CONCRETE BATCHING PLANT OF WKCD PROJECT
 - PROPOSED FOOTPRINT BOUNDARY
 - EXISTING FACILITIES
 - AT GRADE CONSTRUCTION ZONING FOR ZONE 2
 - AT GRADE CONSTRUCTION AREA
 - BARGING POINT OF WKCD PROJECT
 - ▶ AST AIRBORNE NOISE SENSITIVE RECEIVERS (EXISTING)
 - ▶ RD AIRBORNE NOISE SENSITIVE RECEIVERS (PLANNED)
- GROUND LEVEL ZONE:-**
- ZONE 1
 - ZONE 2
 - ZONE 3
 - ZONE 4
 - ZONE 5 (HOTEL)
 - ZONE A (THE PARK)
 - ZONE B (THE PARK)
 - ZONE C (THE PARK)
 - EXCLUDED AREAS

REMARK:
* INDICATIVE SUBJECT TO FUTURE DESIGN & ARRANGEMENT

P5	JUN 13	MING	GENERAL REVISION	HL	AFK
P4	MAY 13	MING	GENERAL REVISION	EY	AFK

Rev Date Drawn Description Ch'kd App'd

Client
WEST KOWLOON CULTURAL DISTRICT AUTHORITY

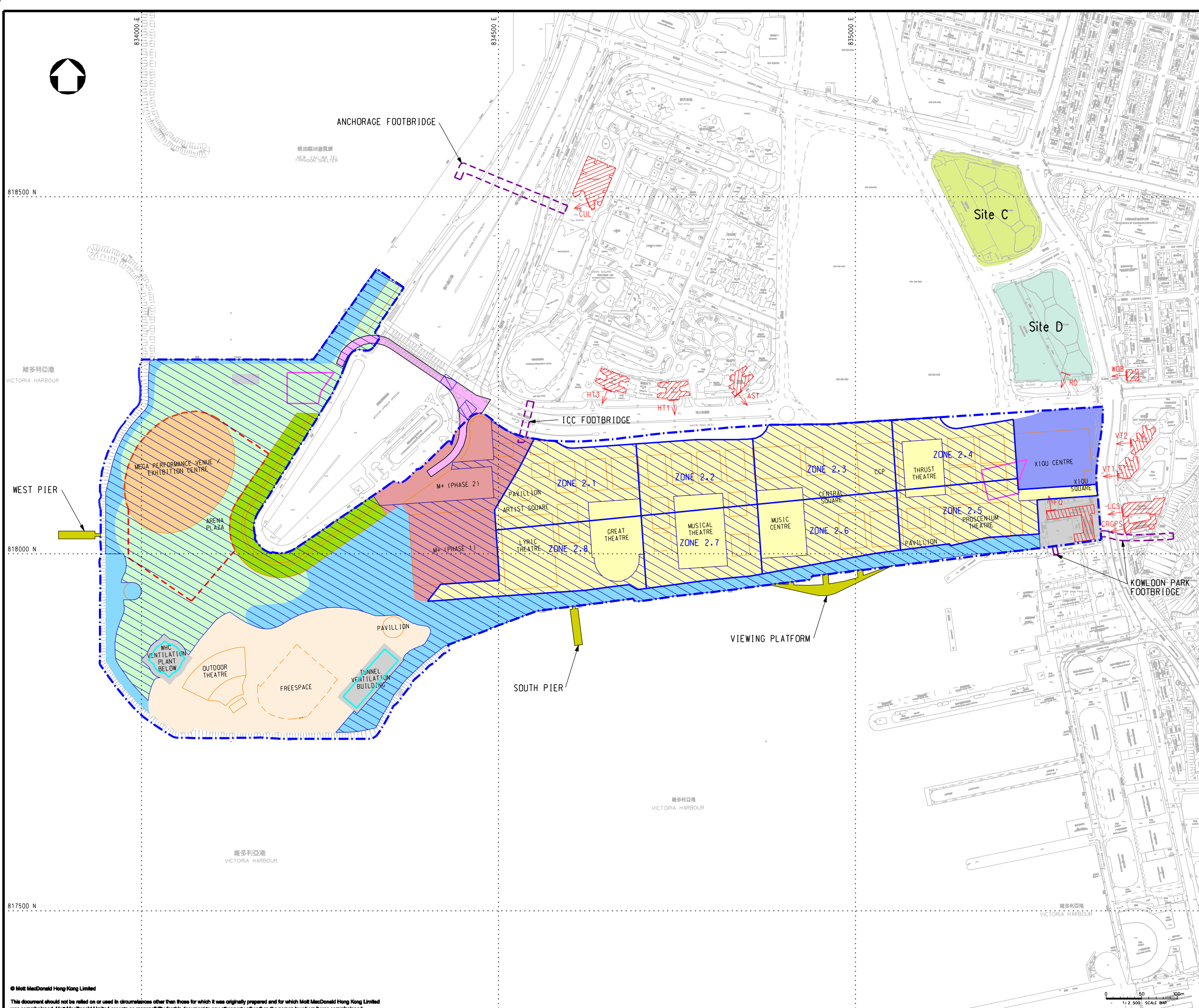
20/F Two Landmark East
100 How Ming Street
Kowloon, Kowloon
Hong Kong
T +852 2828 5757
F +852 2827 1823
www.mottmac.com.hk

Project
PROJECT CONSULTANCY STUDY FOR WEST KOWLOON CULTURAL DISTRICT DEVELOPMENT PLAN

Title
LOCATIONS OF NOISE SENSITIVE RECEIVERS (NSRs) AND CONSTRUCTION AREA BETWEEN APRIL 2016 AND MARCH 2017

Designed	EY	Eng check	HL
Drawn	MING	Coordination	EC
Dwg check	EY	Approved	AFK
Scale at A1	Status	Rev	
1:2500	PRE	P5	

Drawing Number **FIGURE 4.2e**



- LEGEND:**
- PROJECT BOUNDARY
 - BASEMENT LEVEL ZONE
 - FOOTBRIDGE *
 - FLYOVER *
 - POSSIBLE PIER / VIEWING PLATFORM *
 - CONCRETE BATCHING PLANT OF WKCD PROJECT
 - PROPOSED FOOTPRINT BOUNDARY
 - EXISTING FACILITIES
 - AT GRADE CONSTRUCTION ZONING FOR ZONE 2
 - AT GRADE CONSTRUCTION AREA
 - ▨ AST AIRBORNE NOISE SENSITIVE RECEIVERS (EXISTING)
 - ▨ RD AIRBORNE NOISE SENSITIVE RECEIVERS (PLANNED)
- GROUND LEVEL ZONE:-**
- ZONE 1
 - ZONE 2
 - ZONE 3
 - ZONE 4
 - ZONE 5 (HOTEL)
 - ZONE A (THE PARK)
 - ZONE B (THE PARK)
 - ZONE C (THE PARK)
 - EXCLUDED AREAS

REMARK:
* INDICATIVE SUBJECT TO FUTURE DESIGN & ARRANGEMENT

P5	JUN 13	MING	GENERAL REVISION	HL	AFK
P4	MAY 13	MING	GENERAL REVISION	EY	AFK

Rev Date Drawn Description Ch'kd App'd

Client
WEST KOWLOON CULTURAL DISTRICT AUTHORITY

Mott MacDonald

20/F Two Landmark East
100 How Ming Street
Kowloon, Kowloon
Hong Kong
T +852 2828 5757
F +852 2827 1823
www.mottmac.com.hk

ARTEC | IMG Artists | Lord

TFP | FARRELLS | G | H | K

creative thinking positive solutions | warthasa limited

DONNELL

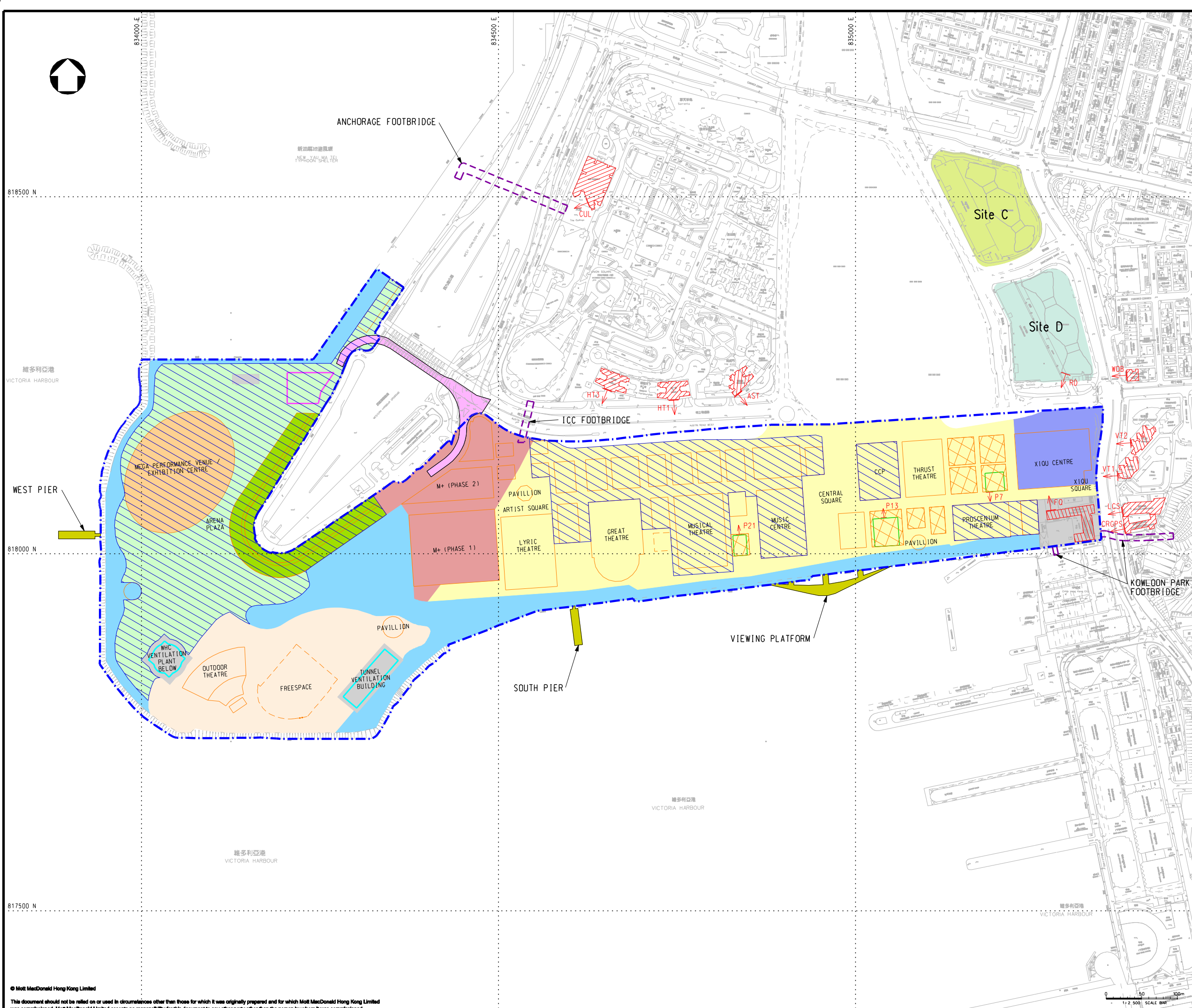
LD ASIA | BMT

Project
PROJECT CONSULTANCY STUDY FOR WEST KOWLOON CULTURAL DISTRICT DEVELOPMENT PLAN

Title
LOCATIONS OF NOISE SENSITIVE RECEIVERS (NSRs) AND CONSTRUCTION AREA BETWEEN APRIL 2017 AND MARCH 2018

Designed	EY	Eng check	HL
Drawn	MING	Coordination	EC
Dwg check	EY	Approved	AFK
Scale at A1	1:2500	Status	PRE
Drawing Number		Rev	P5

FIGURE 4.2f



- LEGEND:**
- PROJECT BOUNDARY
 - BASEMENT LEVEL ZONE
 - FOOTBRIDGE *
 - FLYOVER *
 - POSSIBLE PIER / VIEWING PLATFORM *
 - CONCRETE BATCHING PLANT OF WKCD PROJECT
 - PROPOSED FOOTPRINT BOUNDARY
 - EXISTING FACILITIES
 - TYPICAL RESIDENTIAL FLOOR
 - AT GRADE CONSTRUCTION AREA
 - PLANNED NOISE SENSITIVE RECEIVERS WITHIN WKCD
 - AIRBORNE NOISE SENSITIVE RECEIVERS (EXISTING)
 - AIRBORNE NOISE SENSITIVE RECEIVERS (PLANNED)
- GROUND LEVEL ZONE:-**
- ZONE 1
 - ZONE 2
 - ZONE 3
 - ZONE 4
 - ZONE 5 (HOTEL)
 - ZONE A (THE PARK)
 - ZONE B (THE PARK)
 - ZONE C (THE PARK)
 - EXCLUDED AREAS

REMARK:
* INDICATIVE SUBJECT TO FUTURE DESIGN & ARRANGEMENT

P6	JUN 13	MING	GENERAL REVISION	HL	AFK
P5	MAY 13	MING	GENERAL REVISION	EY	AFK
Rev	Date	Drawn	Description	Ch'kd	App'd

Client
WEST KOWLOON CULTURAL DISTRICT AUTHORITY

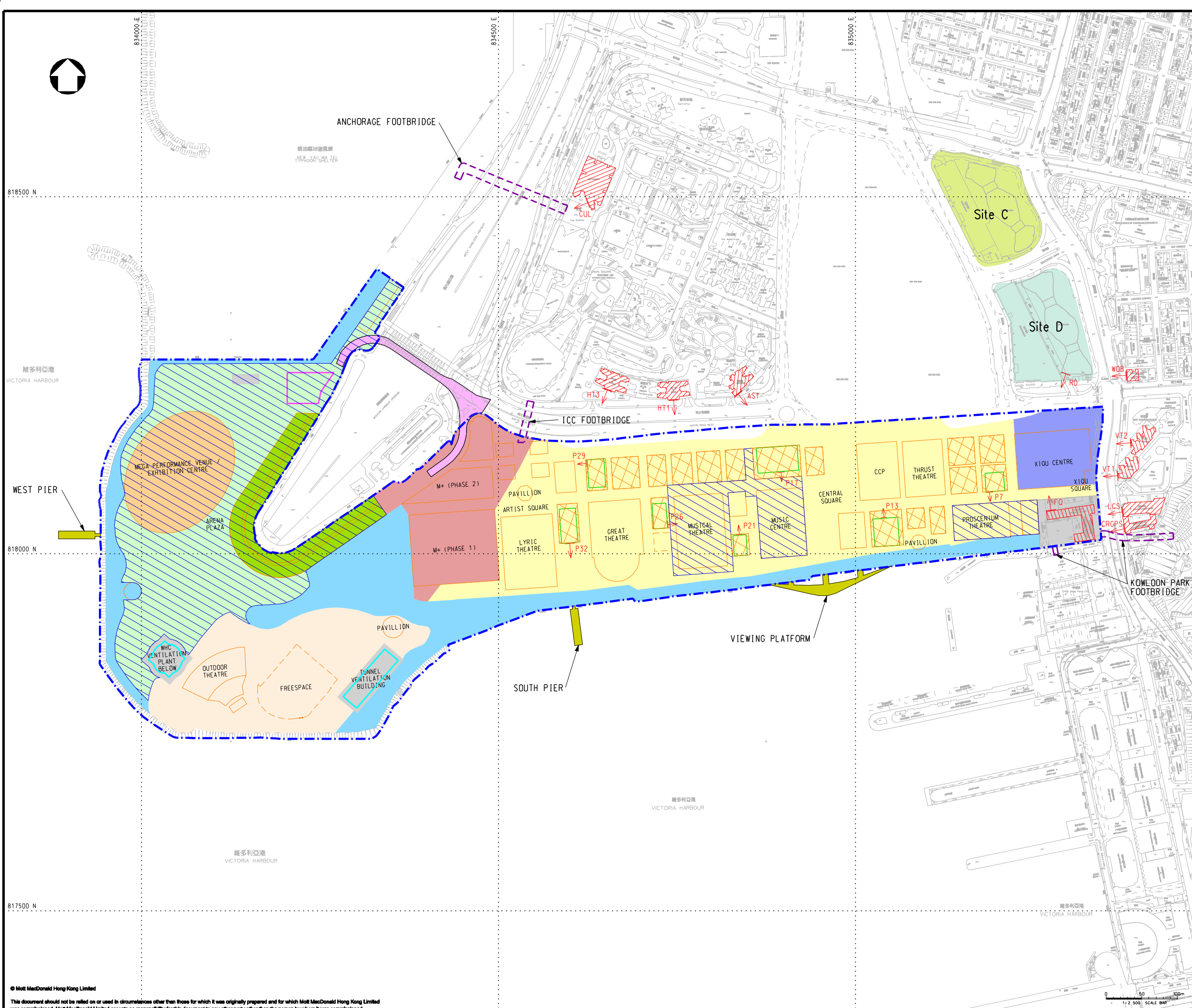
20/F Two Landmark East
100 How Ming Street
Kowloon Tong, Kowloon
Hong Kong
T +852 2828 5757
F +852 2827 1823
www.mottmac.com.hk

Project
PROJECT CONSULTANCY STUDY FOR WEST KOWLOON CULTURAL DISTRICT DEVELOPMENT PLAN

Title
LOCATIONS OF NOISE SENSITIVE RECEIVERS (NSRs) AND CONSTRUCTION AREA BETWEEN APRIL 2018 AND MARCH 2019

Designed	EY	Eng check	HL
Drawn	MING	Coordination	EC
Dwg check	EY	Approved	AFK
Scale at A1	Status	Rev	
1:2500	PRE	P6	

Drawing Number **FIGURE 4.2g**



- LEGEND:**
- PROJECT BOUNDARY
 - BASEMENT LEVEL ZONE
 - FOOTBRIDGE *
 - FLYOVER *
 - POSSIBLE PIER / VIEWING PLATFORM *
 - CONCRETE BATCHING PLANT OF WKCD PROJECT
 - PROPOSED FOOTPRINT BOUNDARY
 - EXISTING FACILITIES
 - TYPICAL RESIDENTIAL FLOOR
 - AT GRADE CONSTRUCTION AREA
 - PLANNED NOISE SENSITIVE RECEIVERS WITHIN WKCD
 - ▶ AST AIRBORNE NOISE SENSITIVE RECEIVERS (EXISTING)
 - ▶ RD AIRBORNE NOISE SENSITIVE RECEIVERS (PLANNED)
- GROUND LEVEL ZONE:-**
- ZONE 1
 - ZONE 2
 - ZONE 3
 - ZONE 4
 - ZONE 5 (HOTEL)
 - ZONE A (THE PARK)
 - ZONE B (THE PARK)
 - ZONE C (THE PARK)
 - EXCLUDED AREAS

REMARK:
* INDICATIVE SUBJECT TO FUTURE DESIGN & ARRANGEMENT

P5	JUN 13	MING	GENERAL REVISION	HL	AFK
P4	MAY 13	MING	GENERAL REVISION	EY	AFK

Client
WEST KOWLOON CULTURAL DISTRICT AUTHORITY



20/F Two Landmark East
100 How Ming Street
Kowloon Tong, Kowloon
Hong Kong
T +852 2828 5757
F +852 2827 1823
www.mottmac.com.hk

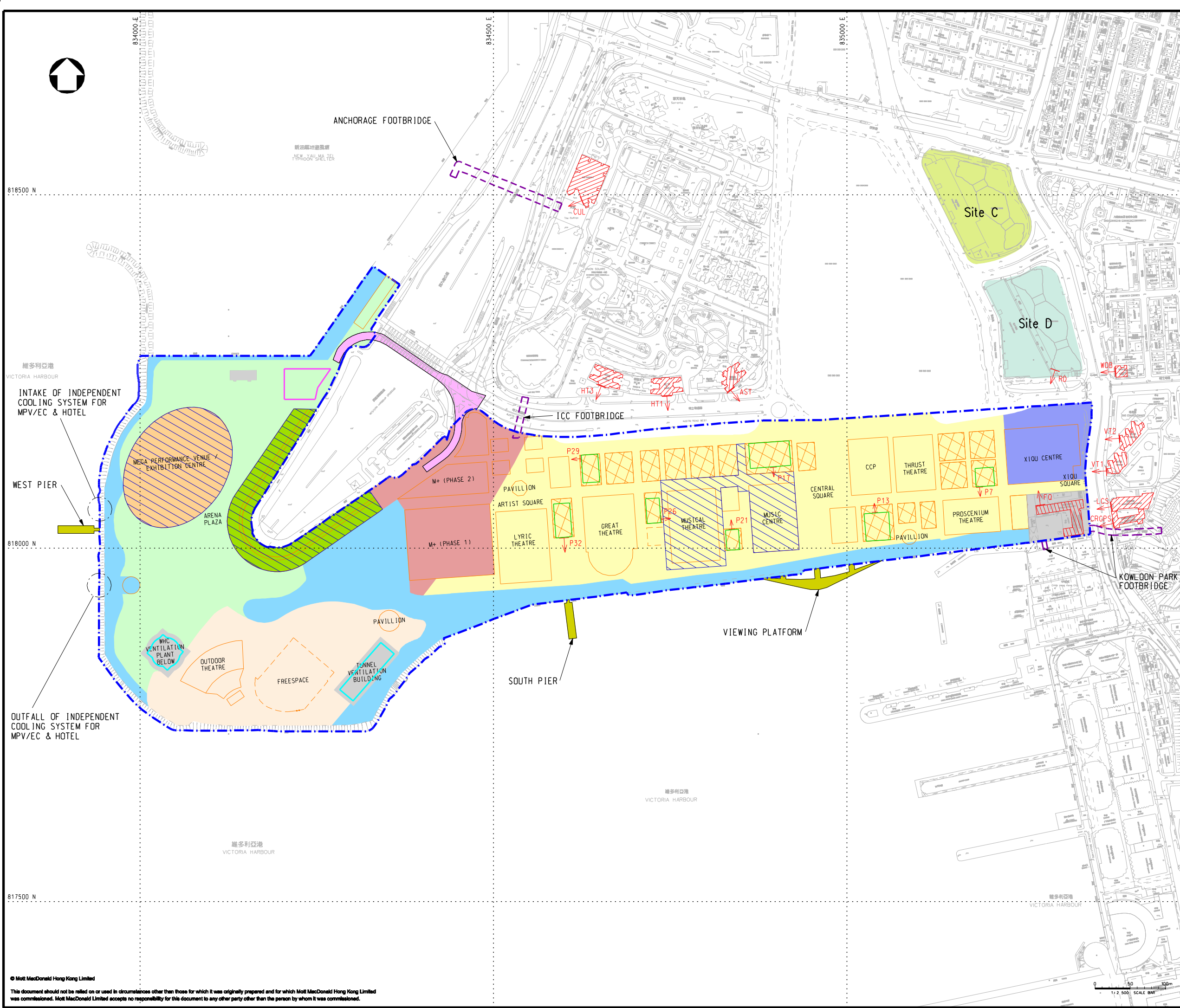


Project
PROJECT CONSULTANCY STUDY FOR WEST KOWLOON CULTURAL DISTRICT DEVELOPMENT PLAN

Title
LOCATIONS OF NOISE SENSITIVE RECEIVERS (NSRs) AND CONSTRUCTION AREA BETWEEN APRIL 2019 AND MARCH 2020

Designed	EY	Eng check	HL
Drawn	MING	Coordination	EC
Dwg check	EY	Approved	AFK
Scale at A1	Status	Rev	
1:2500	PRE	P5	

Drawing Number **FIGURE 4.2h**



- LEGEND:**
- PROJECT BOUNDARY
 - BASEMENT LEVEL ZONE
 - FOOTBRIDGE *
 - FLYOVER *
 - POSSIBLE PIER / VIEWING PLATFORM *
 - CONCRETE BATCHING PLANT OF WKCD PROJECT
 - PROPOSED FOOTPRINT BOUNDARY
 - EXISTING FACILITIES
 - TYPICAL RESIDENTIAL FLOOR
 - AT GRADE CONSTRUCTION AREA
 - PLANNED NOISE SENSITIVE RECEIVERS WITHIN WKCD
 - AST AIRBORNE NOISE SENSITIVE RECEIVERS (EXISTING)
 - RD AIRBORNE NOISE SENSITIVE RECEIVERS (PLANNED)
- GROUND LEVEL ZONE: -**
- ZONE 1
 - ZONE 2
 - ZONE 3
 - ZONE 4
 - ZONE 5 (HOTEL)
 - ZONE A (THE PARK)
 - ZONE B (THE PARK)
 - ZONE C (THE PARK)
 - EXCLUDED AREAS

REMARK:
* INDICATIVE SUBJECT TO FUTURE DESIGN & ARRANGEMENT

P5	JUN 13	MING	GENERAL REVISION	HL	AFK
P4	MAY 13	MING	GENERAL REVISION	EY	AFK

Client
WEST KOWLOON CULTURAL DISTRICT AUTHORITY

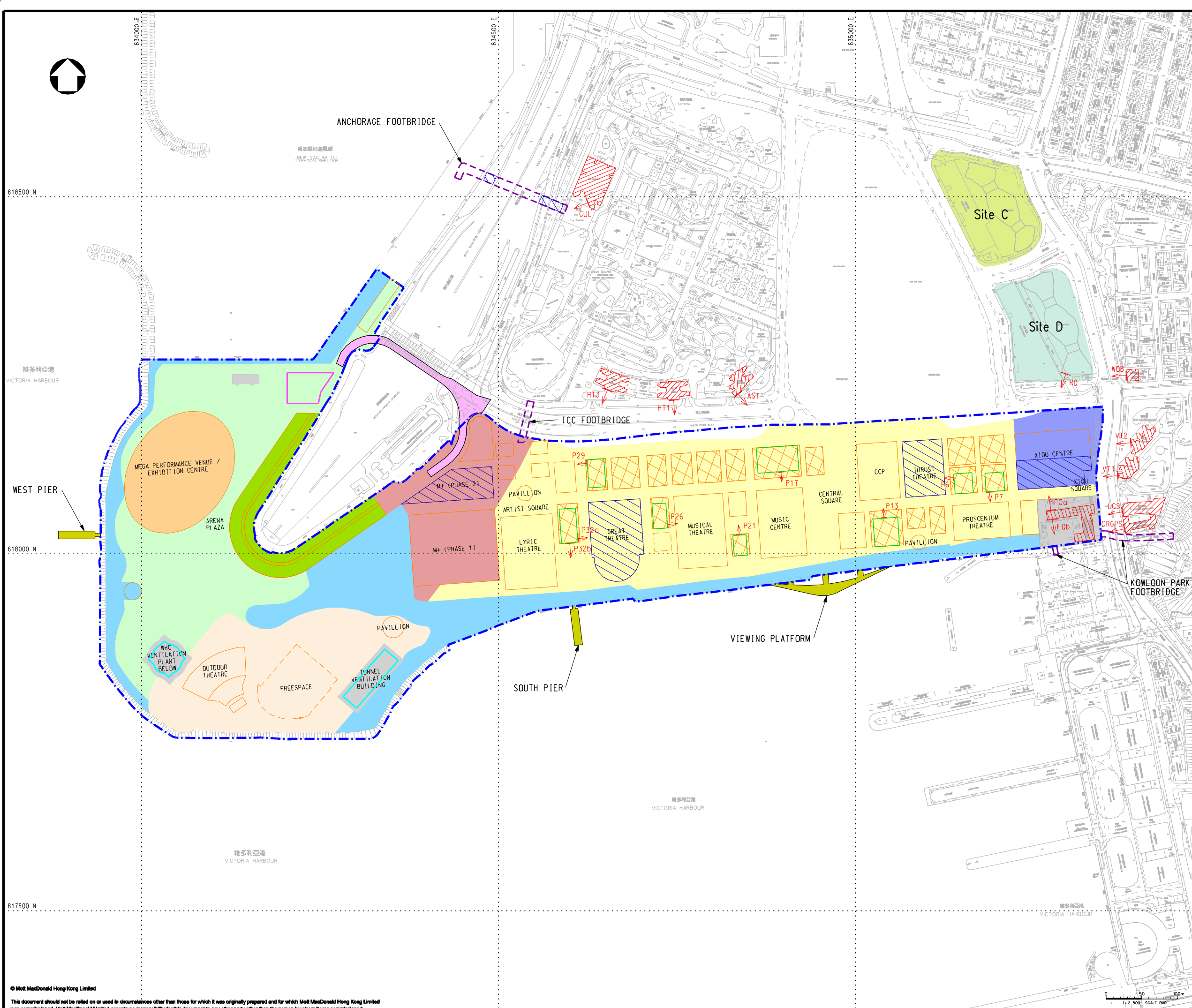
20/F Two Landmark East
100 How Ming Street
Kowloon, Kowloon
Hong Kong
T +852 2828 5757
F +852 2827 1823
www.mottmac.com.hk

Project
PROJECT CONSULTANCY STUDY FOR WEST KOWLOON CULTURAL DISTRICT DEVELOPMENT PLAN

Title
LOCATIONS OF NOISE SENSITIVE RECEIVERS (NSRs) AND CONSTRUCTION AREA BETWEEN APRIL 2020 AND DECEMBER 2020

Designed	EY	Eng check	HL
Drawn	MING	Coordination	EC
Dwg check	EY	Approved	AFK
Scale at A1	1:2500	Status	PRE
Drawing Number		Rev	P5

FIGURE 4.2i



- LEGEND:**
- - - PROJECT BOUNDARY
 - - - BASEMENT LEVEL ZONE
 - - - FOOTBRIDGE *
 - - - FLYOVER *
 - - - POSSIBLE PIER / VIEWING PLATFORM *
 - CONCRETE BATCHING PLANT OF WKCD PROJECT
 - - - PROPOSED FOOTPRINT BOUNDARY
 - - - EXISTING FACILITIES
 - - - TYPICAL RESIDENTIAL FLOOR
 - AT GRADE CONSTRUCTION AREA
 - PLANNED NOISE SENSITIVE RECEIVERS WITHIN WKCD
 - AST AIRBORNE NOISE SENSITIVE RECEIVERS (EXISTING)
 - RD AIRBORNE NOISE SENSITIVE RECEIVERS (PLANNED)
- GROUND LEVEL ZONE:-**
- ZONE 1
 - ZONE 2
 - ZONE 3
 - ZONE 4
 - ZONE 5 (HOTEL)
 - ZONE A (THE PARK)
 - ZONE B (THE PARK)
 - ZONE C (THE PARK)
 - EXCLUDED AREAS

REMARK:
* INDICATIVE SUBJECT TO FUTURE DESIGN & ARRANGEMENT

P4	JUN 13	MING	GENERAL REVISION	HL	AFK
Rev	Date	Drawn	Description	Ch'kd	App'd

Client
WEST KOWLOON CULTURAL DISTRICT AUTHORITY

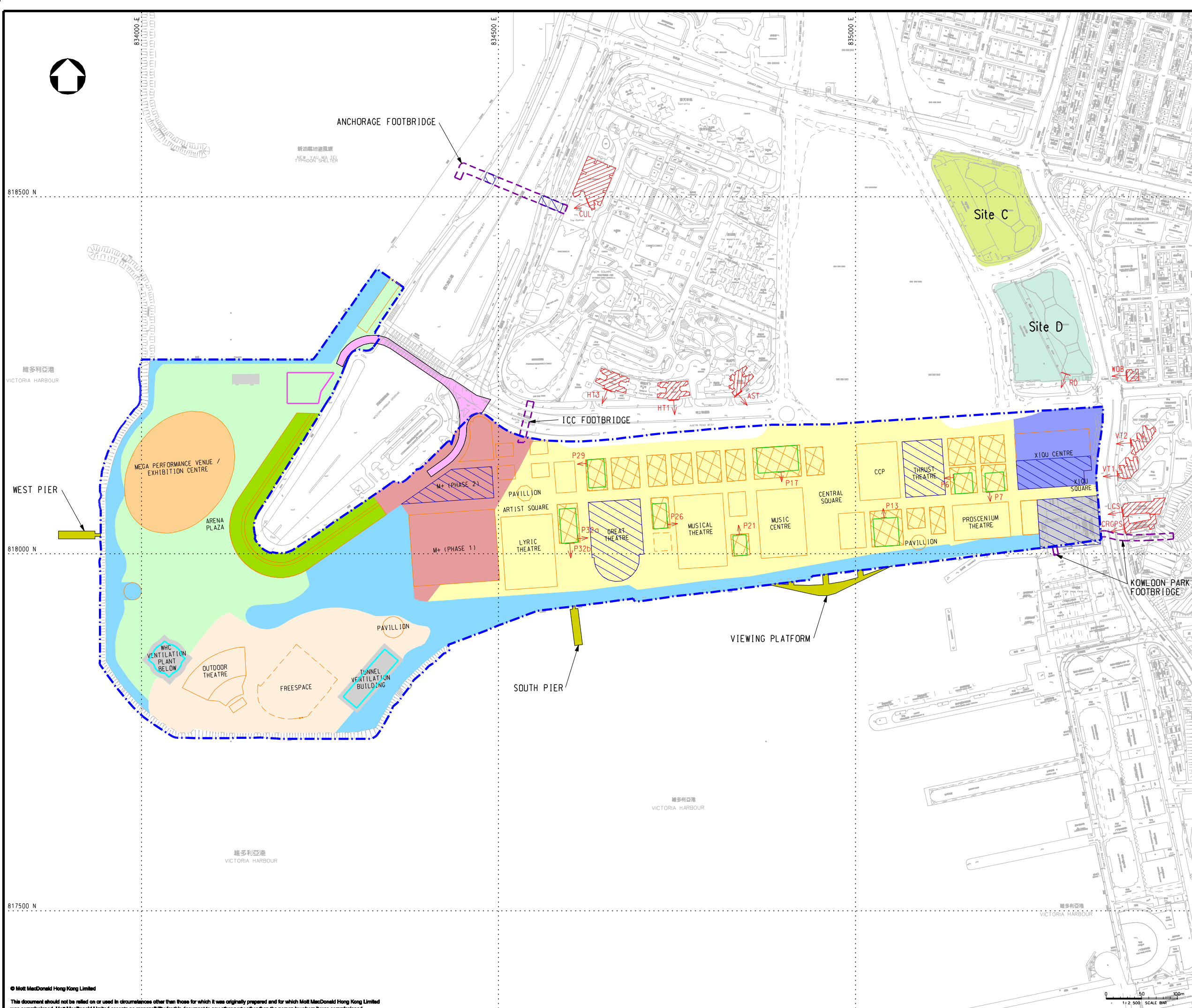
20/F Two Landmark East
100 How Ming Street
Kowloon, Kowloon
Hong Kong
T +852 2828 5757
F +852 2827 1823
www.mottmac.com.hk

Project
PROJECT CONSULTANCY STUDY FOR WEST KOWLOON CULTURAL DISTRICT DEVELOPMENT PLAN

Title
LOCATIONS OF NSRs AND CONSTRUCTION AREA IN YEAR 2021 AND BEFORE FQ RELOCATION

Designed	EY	Eng check	HL
Drawn	MING	Coordination	EC
Dwg check	EY	Approved	AFK
Scale at A1	Status	Rev	
1:2500	PRE	P4	

Drawing Number **FIGURE 4.2j**



- LEGEND:**
- - - PROJECT BOUNDARY
 - - - BASEMENT LEVEL ZONE
 - - - FOOTBRIDGE *
 - - - FLYOVER *
 - - - POSSIBLE PIER / VIEWING PLATFORM *
 - CONCRETE BATCHING PLANT OF WKCD PROJECT
 - - - PROPOSED FOOTPRINT BOUNDARY
 - - - EXISTING FACILITIES
 - - - TYPICAL RESIDENTIAL FLOOR
 - AT GRADE CONSTRUCTION AREA
 - PLANNED NOISE SENSITIVE RECEIVERS WITHIN WKCD
 - ▶ AST AIRBORNE NOISE SENSITIVE RECEIVERS (EXISTING)
 - ▶ RD AIRBORNE NOISE SENSITIVE RECEIVERS (PLANNED)
- GROUND LEVEL ZONE:-**
- ZONE 1
 - ZONE 2
 - ZONE 3
 - ZONE 4
 - ZONE 5 (HOTEL)
 - ZONE A (THE PARK)
 - ZONE B (THE PARK)
 - ZONE C (THE PARK)
 - EXCLUDED AREAS

REMARK:
* INDICATIVE SUBJECT TO FUTURE DESIGN & ARRANGEMENT

P1	JUL 13	MING	GENERAL REVISION	HL	AFK
Rev	Date	Drawn	Description	Ch'kd	App'd

Client
WEST KOWLOON CULTURAL DISTRICT AUTHORITY

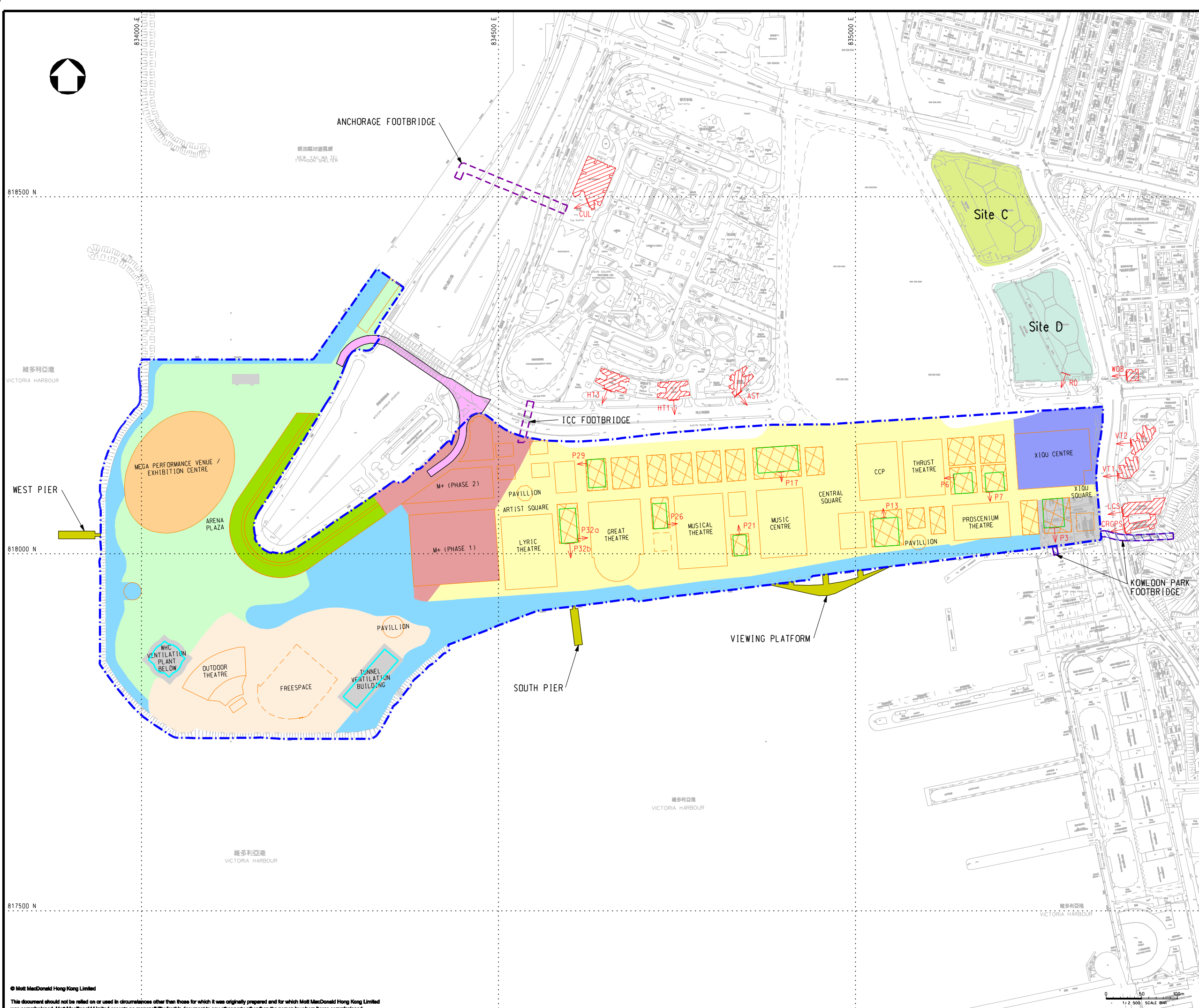
20/F Two Landmark East
100 How Ming Street
Kowloon, Kowloon
Hong Kong
T +852 2828 5757
F +852 2827 1823
www.mottmac.com.hk

Project
PROJECT CONSULTANCY STUDY FOR WEST KOWLOON CULTURAL DISTRICT DEVELOPMENT PLAN

Title
LOCATIONS OF NSRs AND CONSTRUCTION AREA AFTER YEAR 2022 DURING EXCLUDED AREA CONSTRUCTION

Designed	EY	Eng check	HL
Drawn	MING	Coordination	EC
Dwg check	EY	Approved	AFK
Scale at A1	1:2500	Status	PRE
Drawing Number		Rev	P1

FIGURE 4.2K



- LEGEND:**
- - - PROJECT BOUNDARY
 - - - BASEMENT LEVEL ZONE
 - - - FOOTBRIDGE *
 - - - FLYOVER *
 - - - POSSIBLE PIER / VIEWING PLATFORM *
 - - - PROPOSED FOOTPRINT BOUNDARY
 - - - EXISTING FACILITIES
 - - - TYPICAL RESIDENTIAL FLOOR
 - ▨ AT GRADE CONSTRUCTION AREA
 - ▨ PLANNED NOISE SENSITIVE RECEIVERS WITHIN WKCD
 - ▨ AST AIRBORNE NOISE SENSITIVE RECEIVERS (EXISTING)
 - ▨ RD AIRBORNE NOISE SENSITIVE RECEIVERS (PLANNED)
- GROUND LEVEL ZONE:-**
- ▨ ZONE 1
 - ▨ ZONE 2
 - ▨ ZONE 3
 - ▨ ZONE 4
 - ▨ ZONE 5 (HOTEL)
 - ▨ ZONE A (THE PARK)
 - ▨ ZONE B (THE PARK)
 - ▨ ZONE C (THE PARK)
 - ▨ EXCLUDED AREAS

REMARK:
* INDICATIVE SUBJECT TO FUTURE DESIGN & ARRANGEMENT

P1	JUL 13	MING	FIRST ISSUE	HL	AFK
Rev	Date	Drawn	Description	Ch'kd	App'd

Client
WEST KOWLOON CULTURAL DISTRICT AUTHORITY

20/F Two Landmark East
100 How Ming Street
Kowloon, Kowloon
Hong Kong
T +852 2828 5757
F +852 2827 1823
www.mottmac.com.hk

Project
PROJECT CONSULTANCY STUDY FOR WEST KOWLOON CULTURAL DISTRICT DEVELOPMENT PLAN

Title
LOCATIONS OF NSRs AND CONSTRUCTION AREA AFTER 2030

Designed	HL	Eng check	HL
Drawn	MING	Coordination	EC
Dwg check	HL	Approved	AFK
Scale at A1	1:2500	Status	PRE
Drawing Number		Rev	P1

FIGURE 4.21