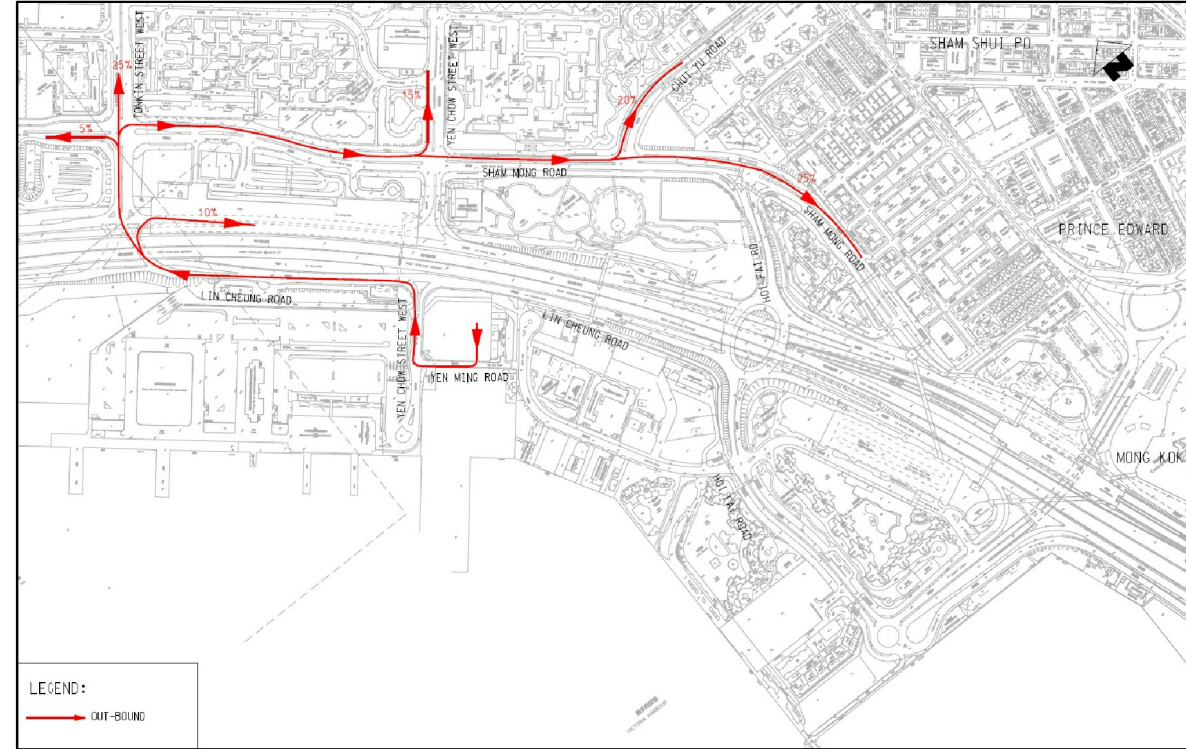
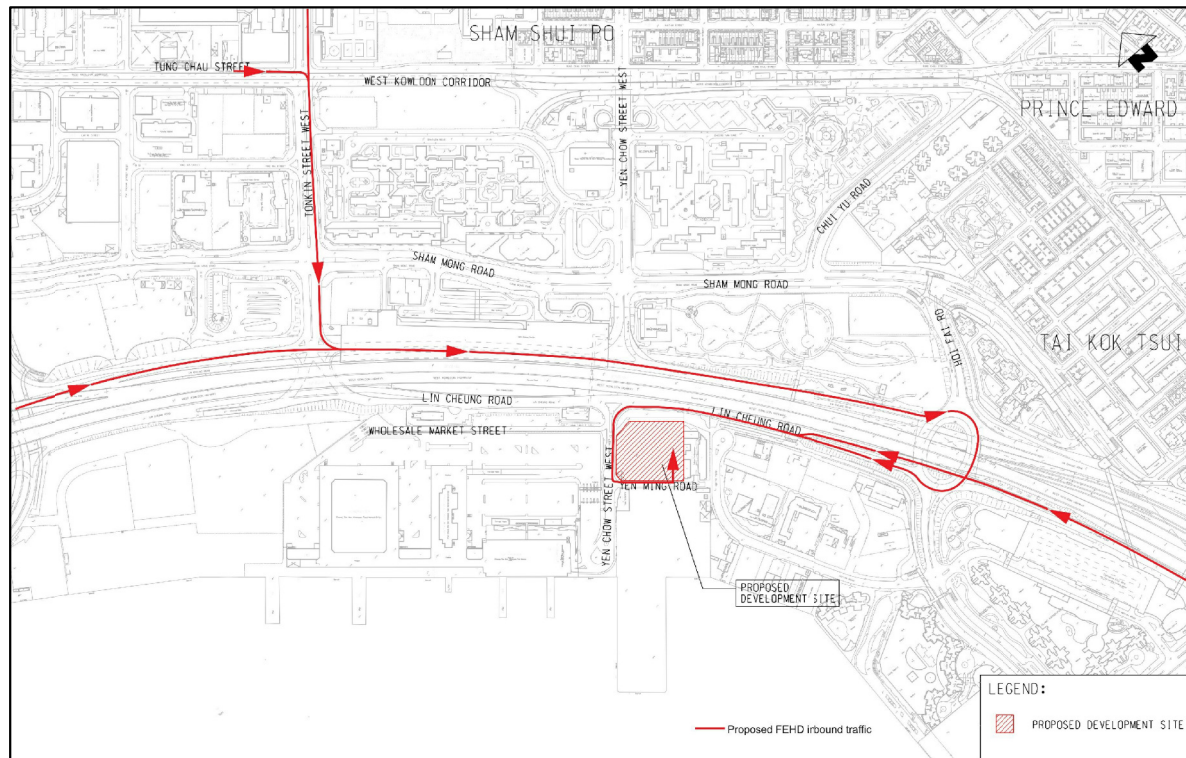


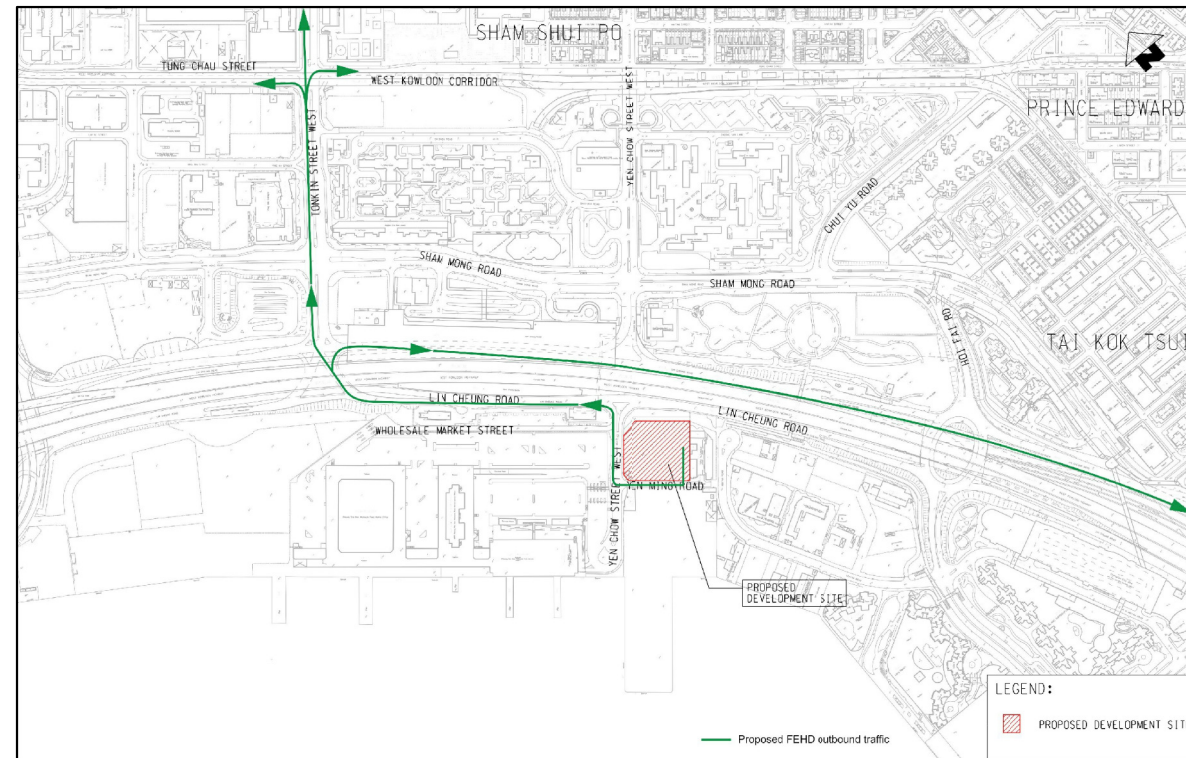
IN-BOUND TRAFFIC ROUTING (OLD)



OUT-BOUND TRAFFIC ROUTING (OLD)



IN-BOUND TRAFFIC ROUTING (MODIFIED)



OUT-BOUND TRAFFIC ROUTING (MODIFIED)

NOTE:
 COORDINATES ARE RELATED TO
 HONG KONG METRIC GRID (1980)

| Rev. | Date | Description | Drawn | Checked |
|--|-------------------|------------------|---------------|---------|
| | | | | |
| Department (Project Proponent) 部門 (項目負責人): | | | | |
|  Food and Environmental Hygiene Department 食物環境衛生署 | | | | |
| Department (Works) 部門 (工程): | | | | |
|  Architectural Service Department 建築署 | | | | |
| Lead Architect (Consultancy Agreement No. 9AX 034): 建築顧問 (顧問合約編號 9AX 034): | | | | |
|  P&T Architects and Engineers Ltd 巴馬丹拿建築及工程師有限公司 | | | | |
| Project Title 項目名稱: REPROVISIONING OF FEHD SAI YEE STREET ENVIRONMENTAL HYGIENE OFFICES-CUM-VEHICLE DEPOT AT YEN MING ROAD, WEST KOWLOON RECLAMATION AREA 在西九龍填海區欽明路重置食物環境衛生署洗衣街環境衛生辦事處暨車房 | | | | |
| Drawing Title 圖則名稱: Location Plan of Alternative Routings | | | | |
| Drawing No. 圖則編號: Figure 2-2 | | | | |
| Designed 設計: TWKW | Drawn 繪圖: FYS | Checked 校核: ICWR | Scale 比例: NTS | |
| Approved 核准: HTMI | Date 日期: JUN 2013 | Status 狀態: 最終 | | |