

**Appendix 3.8**  
**Calculation of Emission Factor  
for Construction Dust  
Assessment**

---

### Appendix 3.8 - Calculation of Emission Factor for Heavy Construction and Wind Erosion

#### Heavy Construction:

Emission Factor (E) = 1.2 tons/acre/month activity (ref: AP-42 S13.2.3.3)  
 2.69 Mg/hectare/month activity

#### Unmitigated

Active operating area (%): 100% 100% for worst case scenario  
 Mitigation Efficiency (%): 0% Unmitigated Scenario  
 E (g/m<sup>2</sup>/day): 10.3462 Assume 26 working days per month  
 E (g/m<sup>2</sup>/s): 0.000239494 Assume 12 working hours a day

#### Mitigated (Working Hours)

Active operating area (%): 100% 100% for worst case scenario  
 Mitigation Efficiency (%): 91.7% Unmitigated Scenario  
 E (g/m<sup>2</sup>/day): 0.8587 Assume 26 working days per month  
 E (g/m<sup>2</sup>/s): 0.000019878 Assume 12 working hours a day

#### Wind Erosion

Emission Factor (E) = 0.85 Mg/hectare/year (ref: AP-42 S11.9, Table 11.9.4)  
 0.2329 g/m<sup>2</sup>/day

#### Unmitigated

Active operating area (%): 100% 100% for worst case scenario  
 Mitigation Efficiency (%): 0% Unmitigated Scenario  
 E (g/m<sup>2</sup>/hour): 0.009703196  
 E (g/m<sup>2</sup>/s): 0.000002695

#### Mitigated (Working Hours)

Active operating area (%): 100% 100% for worst case scenario  
 Mitigation Efficiency (%): 91.7% Unmitigated Scenario  
 E (g/m<sup>2</sup>/hour): 0.000805365  
 E (g/m<sup>2</sup>/s): 0.000000224

**Appendix 3.8 - Details of Dust Emission Source for TSP Assessment**

Unmitigated Scenario

Scheme	Source ID	Source Type	Coordinates of Centroid		Dimension (m)		Angle / Width	Height (m)	Emission Rate (g/s or g/s/m <sup>2</sup> )			Working Hours (WH)
			X	Y	Width	Length			Heavy Construction	Wind Erosion		
									Working Hours	WH	Non-WH	
Scheme Q	Q1	Area	835281.3	818555.6	50	7	-10	0.5	0.00023949	0.00000022	0.00000270	0700 - 1900
Scheme Q	Q2	Area	835270.4	818532.8	13	13	0	0.5	0.00023949	0.00000022	0.00000270	0700 - 1900
Scheme Q	Q3	Area	835236.4	818514.7	65	7	-70	0.5	0.00023949	0.00000022	0.00000270	0700 - 1900
Scheme Q	Q4	Area	835275.9	818404.9	25	7	0	0.5	0.00023949	0.00000022	0.00000270	0700 - 1900
Scheme Q	Q5	Area	835296.2	818397.2	25	7	-50	0.5	0.00023949	0.00000022	0.00000270	0700 - 1900
Scheme Q	Q6	Area	835309.0	818372.7	35	7	-75	0.5	0.00023949	0.00000022	0.00000270	0700 - 1900
Scheme Q	Q7	Area	835337.3	818264.7	35	7	-80	0.5	0.00023949	0.00000022	0.00000270	0700 - 1900
Scheme Q	Q8	Area	835330.9	818242.1	20	7	30	0.5	0.00023949	0.00000022	0.00000270	0700 - 1900
Scheme Q	Q9	Area	835337.6	818209.6	25	10	0	0.5	0.00023949	0.00000022	0.00000270	0700 - 1900
Scheme Q	Q10	Area	835341.4	818190.2	30	13	85	0.5	0.00023949	0.00000022	0.00000270	0700 - 1900
Scheme Q	Q11	Area	835338.0	818135.3	80	10	85	0.5	0.00023949	0.00000022	0.00000270	0700 - 1900
Scheme I	I1	Area	834491.0	818448.4	180	10	60	0.5	0.00023949	0.00000022	0.00000270	0700 - 1900
Scheme I	I2	Area	834554.5	818532.5	40	15	-30	0.5	0.00023949	0.00000022	0.00000270	0700 - 1900
Scheme I	I3	Area	834560.3	818498.6	40	10	75	0.5	0.00023949	0.00000022	0.00000270	0700 - 1900
Scheme H(B)	HB1	Area	834579.8	818565.9	70	10	75	0.5	0.00023949	0.00000022	0.00000270	0700 - 1900
Scheme H(B)	HB2	Area	834613.3	818657.2	125	10	70	0.5	0.00023949	0.00000022	0.00000270	0700 - 1900
Scheme J	J1	Area	834747.0	819102.9	130	10	-82	0.5	0.00023949	0.00000022	0.00000270	0700 - 1900
Scheme J	J2	Area	834742.1	819214.4	95	10	85	0.5	0.00023949	0.00000022	0.00000270	0700 - 1900
Scheme J	J3	Area	834741.5	819277.3	30	10	-80	0.5	0.00023949	0.00000022	0.00000270	0700 - 1900
Scheme H(A)	HA1	Area	834576.4	819168.6	50	7	85	0.5	0.00023949	0.00000022	0.00000270	0700 - 1900
Scheme H(A)	HA2	Area	834600.6	819254.6	130	7	71	0.5	0.00023949	0.00000022	0.00000270	0700 - 1900
Scheme H(A)	HA3	Area	834625.4	819366.2	100	7	85	0.5	0.00023949	0.00000022	0.00000270	0700 - 1900
Scheme H(A)	HA4	Area	834619.8	819470.5	110	7	-80	0.5	0.00023949	0.00000022	0.00000270	0700 - 1900
Scheme H(A)	HA5	Area	834588.5	819585.5	130	7	-72	0.5	0.00023949	0.00000022	0.00000270	0700 - 1900
Scheme H(A)	HA6	Area	834539.5	819731.2	180	7	-70	0.5	0.00023949	0.00000022	0.00000270	0700 - 1900

**Details of Dust Emission Source for TSP Assessment**

Mitigated Scenario

Scheme	Source ID	Source Type	Coordinates of Centroid		Dimension (m)		Angle / Width	Height (m)	Emission Rate (g/s or g/s/m <sup>2</sup> )			Working Hours (WH)
			X	Y	Width	Length			Heavy Construction	Wind Erosion		
									Working Hours	WH	Non-WH	
Scheme Q	Q1	Area	835281.3	818555.6	50	7	-10	0.5	0.00001988	0.00000022	0.00000270	0700 - 1900
Scheme Q	Q2	Area	835270.4	818532.8	13	13	0	0.5	0.00001988	0.00000022	0.00000270	0700 - 1900
Scheme Q	Q3	Area	835236.4	818514.7	65	7	-70	0.5	0.00001988	0.00000022	0.00000270	0700 - 1900
Scheme Q	Q4	Area	835275.9	818404.9	25	7	0	0.5	0.00001988	0.00000022	0.00000270	0700 - 1900
Scheme Q	Q5	Area	835296.2	818397.2	25	7	-50	0.5	0.00001988	0.00000022	0.00000270	0700 - 1900
Scheme Q	Q6	Area	835309.0	818372.7	35	7	-75	0.5	0.00001988	0.00000022	0.00000270	0700 - 1900
Scheme Q	Q7	Area	835337.3	818264.7	35	7	-80	0.5	0.00001988	0.00000022	0.00000270	0700 - 1900
Scheme Q	Q8	Area	835330.9	818242.1	20	7	30	0.5	0.00001988	0.00000022	0.00000270	0700 - 1900
Scheme Q	Q9	Area	835337.6	818209.6	25	10	0	0.5	0.00001988	0.00000022	0.00000270	0700 - 1900
Scheme Q	Q10	Area	835341.4	818190.2	30	13	85	0.5	0.00001988	0.00000022	0.00000270	0700 - 1900
Scheme Q	Q11	Area	835338.0	818135.3	80	10	85	0.5	0.00001988	0.00000022	0.00000270	0700 - 1900
Scheme I	I1	Area	834491.0	818448.4	180	10	60	0.5	0.00001988	0.00000022	0.00000270	0700 - 1900
Scheme I	I2	Area	834554.5	818532.5	40	15	-30	0.5	0.00001988	0.00000022	0.00000270	0700 - 1900
Scheme I	I3	Area	834560.3	818498.6	40	10	75	0.5	0.00001988	0.00000022	0.00000270	0700 - 1900
Scheme H(B)	HB1	Area	834579.8	818565.9	70	10	75	0.5	0.00001988	0.00000022	0.00000270	0700 - 1900
Scheme H(B)	HB2	Area	834613.3	818657.2	125	10	70	0.5	0.00001988	0.00000022	0.00000270	0700 - 1900
Scheme J	J1	Area	834747.0	819102.9	130	10	-82	0.5	0.00001988	0.00000022	0.00000270	0700 - 1900
Scheme J	J2	Area	834742.1	819214.4	95	10	85	0.5	0.00001988	0.00000022	0.00000270	0700 - 1900
Scheme J	J3	Area	834741.5	819277.3	30	10	-80	0.5	0.00001988	0.00000022	0.00000270	0700 - 1900
Scheme H(A)	HA1	Area	834576.4	819168.6	50	7	85	0.5	0.00001988	0.00000022	0.00000270	0700 - 1900
Scheme H(A)	HA2	Area	834600.6	819254.6	130	7	71	0.5	0.00001988	0.00000022	0.00000270	0700 - 1900
Scheme H(A)	HA3	Area	834625.4	819366.2	100	7	85	0.5	0.00001988	0.00000022	0.00000270	0700 - 1900
Scheme H(A)	HA4	Area	834619.8	819470.5	110	7	-80	0.5	0.00001988	0.00000022	0.00000270	0700 - 1900
Scheme H(A)	HA5	Area	834588.5	819585.5	130	7	-72	0.5	0.00001988	0.00000022	0.00000270	0700 - 1900
Scheme H(A)	HA6	Area	834539.5	819731.2	180	7	-70	0.5	0.00001988	0.00000022	0.00000270	0700 - 1900

Appendix 3.8 - Input Parameters for WKCD of Year 2014 for Hourly and Daily Emission

ID	Source Type	Coordinates of Centroid		Dimension (m)		Width /Angle	Height (m)	Emission Rate (g/s or g/s/m <sup>2</sup> )			
		X	Y	Width	Length			Heavy Construction	Wind Erosion	Working Hour	Non-Working Hour
C1	Area	834297.5	818332.8	145	23.5	55	0	0.000001968	0.000000267	0.000002235	0.000000267
C2	Area	834132.0	818269.2	240.1	5.5	0	0	0.000001968	0.000000267	0.000002235	0.000000267
C3	Area	834015.5	818232.9	67	11.5	-90	0	0.000001968	0.000000267	0.000002235	0.000000267
C4	Area	833988.0	818173.2	68	11	53.6	0	0.000001968	0.000000267	0.000002235	0.000000267
C5	Area	833961.1	818108.0	69	22.5	-89.9	0	0.000001968	0.000000267	0.000002235	0.000000267
C6	Area	833956.4	818048.8	49.5	12.9	-89.9	0	0.000001968	0.000000267	0.000002235	0.000000267
C7	Area	833987.7	817947.4	27.6	27.6	-89.9	0	0.000001968	0.000000267	0.000002235	0.000000267
C8	Area	833959.6	817882.0	64	18.7	-89.9	0	0.000001968	0.000000267	0.000002235	0.000000267
C9	Area	833959.6	817882.0	64	18.7	-89.9	0	0.000001968	0.000000267	0.000002235	0.000000267
C10	Area	833981.7	817816.7	74	14	-51.7	0	0.000001968	0.000000267	0.000002235	0.000000267
C14	Area	834200.5	817800.9	72	65	90	0	0.000001968	0.000000267	0.000002235	0.000000267
C15	Area	834456.1	818201.7	20	19	49	0	0.000019879	0.000002696	0.000022575	0.000002696
C16	Area	834427.0	818148.3	69	10	44.2	0	0.000001908	0.000000259	0.000002167	0.000000259
C17	Area	834473.0	818158.6	55.6	33.5	-86	0	0.000001908	0.000000259	0.000002167	0.000000259
C18	Area	834430.5	818042.8	174.6	53	55.4	0	0.000001908	0.000000259	0.000002167	0.000000259
C26	Area	834681.4	818144.2	140	17.5	4	0	0.000001789	0.000000243	0.000002032	0.000000243
C27	Area	834723.0	818108.5	62	59.7	4	0	0.000001789	0.000000243	0.000002032	0.000000243
C28	Area	834624.9	818001.4	251.5	15.2	4	0	0.000001789	0.000000243	0.000002032	0.000000243
C29	Area	834807.7	818022.3	116	80	4	0	0.000001789	0.000000243	0.000002032	0.000000243
C32	Area	834946.6	818141.7	49.7	48.6	-86	0	0.000001789	0.000000243	0.000002032	0.000000243
C33	Area	834953.3	818097.2	55.8	40	4	0	0.000001789	0.000000243	0.000002032	0.000000243
C37	Area	835075.4	818024.0	61.6	22	4	0	0.000008866	0.000001202	0.000010068	0.000001202
C39	Area	835128.2	818040.3	52.9	46	-86	0	0.000008866	0.000001202	0.000010068	0.000001202
C41	Area	835166.8	818055.4	33.3	28	4	0	0.000008866	0.000001202	0.000010068	0.000001202
C42	Area	835185.2	818032.7	66.6	20	4	0	0.000008866	0.000001202	0.000010068	0.000001202
C45	Area	835243.1	818179.4	46.8	20.3	4	0	0.000000258	0.000000035	0.000000293	0.000000035
C46	Area	835236.6	818129.6	78.2	27	-86	0	0.000000258	0.000000035	0.000000293	0.000000035
C47	Area	835265.1	818138.2	65	31	-86	0	0.000000258	0.000000035	0.000000293	0.000000035
C48	Area	835305.0	818188.4	78	29.6	3.8	0	0.000000258	0.000000035	0.000000293	0.000000035
C49	Area	835303.7	818141.0	65	46.2	-86.4	0	0.000000258	0.000000035	0.000000293	0.000000035
C50	Area	835284.6	818100.4	64.6	13.2	4	0	0.000000258	0.000000035	0.000000293	0.000000035
C51	Area	835331.2	818146.2	58.2	8.8	-85.8	0	0.000000258	0.000000035	0.000000293	0.000000035
C52	Area	835326.8	818106.7	20.4	20	4	0	0.000000258	0.000000035	0.000000293	0.000000035
C53	Area	834539.3	818188.9	49.9	9	76.6	0	0.000019879	0.000002696	0.000022575	0.000002696
C54	Area	835303.8	818216.5	26.6	9.7	-87.6	0	0.000019879	0.000002696	0.000022575	0.000002696
CB1	Area	834306.9	818306.0	22.6	15.7	-35	0	0.000019879	0.000002696	0.000022575	0.000002696
CB2	Area	834430.0	818240.2	19.1	14	-35.5	0	0.000019879	0.000002696	0.000022575	0.000002696
CB3	Area	834488.0	818525.7	14.4	12	-22.4	0	0.000019879	0.000002696	0.000022575	0.000002696
CB4	Area	835360.4	818024.9	33.2	16.2	5	0	0.000019879	0.000002696	0.000022575	0.000002696
CB5	Area	834573.8	818490.4	32.8	11.9	-22.4	0	0.000019879	0.000002696	0.000022575	0.000002696
EP1	Point	835199.6	818095.5	0	0	0	13	0.016666667	0	0.016666667	0
EP2	Point	835197.6	818087.0	0	0	0	13	0.016666667	0	0.016666667	0
EP3	Point	835198.7	818094.0	0	0	0	13	0.00022984	0	0.00022984	0
EP4	Point	835196.5	818085.7	0	0	0	13	0.00022984	0	0.00022984	0
EP5	Point	835205.4	818088.9	0	0	0	20	0.010833334	0	0.010833334	0
EP6	Point	835207.0	818095.3	0	0	0	20	0.010833334	0	0.010833334	0
EP7	Point	835194.8	818092.4	0	0	0	20	0.010833334	0	0.010833334	0
EP8	Point	835205.8	818083.0	0	0	0	20	0.010833334	0	0.010833334	0
EP9	Point	835232.6	818123.4	0	0	0	4	0.001635902	0	0.001635902	0
EP10	Point	834584.4	817939.9	0	0	0	7	0.001635902	0	0.001635902	0
EP11-1	Area	834978.3	818020.7	3	30	12.7	0.5	0.000163385	0	0.000163385	0
EP11-2	Area	835007.6	818027.3	3	30	12.7	0.5	0.000163385	0	0.000163385	0
EP11-3	Area	835032.4	818033.9	3	20.8	12.7	0.5	0.000163385	0	0.000163385	0
EP11-4	Area	835050.1	818040.9	3	30	7.3	0.5	0.000163385	0	0.000163385	0
EP11-5	Area	835079.9	818044.7	3	30	7.3	0.5	0.000163385	0	0.000163385	0
EP11-6	Area	835109.6	818048.5	3	30	7.3	0.5	0.000163385	0	0.000163385	0
EP11-7	Area	835139.4	818052.3	3	30	7.3	0.5	0.000163385	0	0.000163385	0
EP11-8	Area	835169.2	818056.1	3	30	7.3	0.5	0.000163385	0	0.000163385	0
EP11-9	Area	835186.0	818066.7	3	30	8.2	0.5	0.000163385	0	0.000163385	0
EP11-10	Area	835219.2	818062.5	3	9.1	8.2	0.5	0.000163385	0	0.000163385	0
EP11-11	Area	835239.5	818023.8	3	20	75.6	0.5	0.000163385	0	0.000163385	0
EP11-12	Area	835232.0	818033.9	3	30	96.1	0.5	0.000163385	0	0.000163385	0
EP11-13	Area	835229.6	818063.7	3	21.7	96.1	0.5	0.000163385	0	0.000163385	0
EP11-14	Area	835228.9	818089.7	3	8.1	86.3	0.5	0.000163385	0	0.000163385	0
EP11-15	Area	835244.5	818102.7	3	30	75.2	0.5	0.000163385	0	0.000163385	0
EP11-16	Area	835241.5	818131.7	3	8.2	75.2	0.5	0.000163385	0	0.000163385	0
EP12-1	Area	834909.9	818016.6	3	30	6	0.5	0.00014248	0	0.00014248	0
EP12-2	Area	834939.8	818019.7	3	30	6	0.5	0.00014248	0	0.00014248	0
EP12-3	Area	834951.0	818024.2	3	8.4	3	0.5	0.00014248	0	0.00014248	0
EP12-4	Area	834765.2	817997.8	3	30	7.8	0.5	0.00014248	0	0.00014248	0
EP12-5	Area	834795.0	818001.9	3	30	7.8	0.5	0.00014248	0	0.00014248	0
EP12-6	Area	834824.7	818005.9	3	30	7.8	0.5	0.00014248	0	0.00014248	0
EP12-7	Area	834854.4	818010.0	3	30	7.8	0.5	0.00014248	0	0.00014248	0
EP12-8	Area	834895.8	818015.0	3	30	5.7	0.5	0.00014248	0	0.00014248	0
EP12-9	Area	834649.8	817986.1	3	30	5.7	0.5	0.00014248	0	0.00014248	0
EP12-10	Area	834679.7	817989.0	3	30	5.7	0.5	0.00014248	0	0.00014248	0
EP12-11	Area	834709.5	817992.0	3	30	5.7	0.5	0.00014248	0	0.00014248	0
EP12-12	Area	834739.4	817995.0	3	30	5.7	0.5	0.00014248	0	0.00014248	0
EP12-13	Area	834759.9	817997.9	3	7.8	5.7	0.5	0.00014248	0	0.00014248	0
EP12-14	Area	834600.6	817981.2	3	30	5.7	0.5	0.00014248	0	0.00014248	0
EP12-15	Area	834626.0	817984.2	3	19.4	5.7	0.5	0.00014248	0	0.00014248	0

EP13-1	Area	834897.8	817976.4	3	30	89.2	0.5	0.000063499	0	0.000063499	0
EP13-2	Area	834898.2	818006.4	3	30	89.2	0.5	0.000063499	0	0.000063499	0
EP13-3	Area	834898.6	818036.4	3	30	89.2	0.5	0.000063499	0	0.000063499	0
EP13-4	Area	834899.0	818066.4	3	30	89.2	0.5	0.000063499	0	0.000063499	0
EP13-5	Area	834899.4	818096.4	3	30	89.2	0.5	0.000063499	0	0.000063499	0
EP13-6	Area	834897.9	818126.4	3	18.6	89.2	0.5	0.000063499	0	0.000063499	0
EP14-1	Area	835223.4	818149.1	3	19.1	11.6	0.5	0.00008362	0	0.00008362	0
EP14-2	Area	835210.1	818188.3	3	21	71.7	0.5	0.00008362	0	0.00008362	0
EP14-3	Area	835204.0	818136.5	3	19.3	13.9	0.5	0.00008362	0	0.00008362	0
EP15-1	Area	835212.7	818158.4	3	19.3	1.8	0.5	0.000039954	0	0.000039954	0
EP15-2	Area	835220.7	818146.6	3	19.6	24.3	0.5	0.000039954	0	0.000039954	0
EP16-1	Area	835211.8	818147.7	3	30	13.8	0.5	0.000017038	0	0.000017038	0
EP16-2	Area	835205.7	818187.3	3	25.9	77.2	0.5	0.000017038	0	0.000017038	0
EP17-1	Area	835213.0	818125.9	3	19.9	19.8	0.5	0.00000852	0	0.00000852	0
EP17-2	Area	835195.8	818120.1	3	23	15.3	0.5	0.00000852	0	0.00000852	0
EP18-1	Area	834979.0	818017.8	3	30	12.7	0.5	0.00006122	0	0.00006122	0
EP18-2	Area	835008.3	818024.4	3	30	12.7	0.5	0.00006122	0	0.00006122	0
EP18-3	Area	835032.8	818031.0	3	20.5	12.7	0.5	0.00006122	0	0.00006122	0
EP18-4	Area	835050.5	818037.9	3	30	7.3	0.5	0.00006122	0	0.00006122	0
EP18-5	Area	835080.3	818041.7	3	30	7.3	0.5	0.00006122	0	0.00006122	0
EP18-6	Area	835110.0	818045.5	3	30	7.3	0.5	0.00006122	0	0.00006122	0
EP18-7	Area	835139.8	818049.3	3	30	7.3	0.5	0.00006122	0	0.00006122	0
EP18-8	Area	835169.5	818053.1	3	30	7.3	0.5	0.00006122	0	0.00006122	0
EP18-9	Area	835185.0	818063.9	3	30	8.3	0.5	0.00006122	0	0.00006122	0
EP18-10	Area	835218.7	818059.5	3	11	8.3	0.5	0.00006122	0	0.00006122	0
EP18-11	Area	835243.4	818020.4	3	23.2	75.6	0.5	0.00006122	0	0.00006122	0
EP18-12	Area	835235.0	818033.7	3	30	96.1	0.5	0.00006122	0	0.00006122	0
EP18-13	Area	835232.5	818063.5	3	22.2	96.1	0.5	0.00006122	0	0.00006122	0
EP18-14	Area	835232.6	818089.9	3	7	86.5	0.5	0.00006122	0	0.00006122	0
EP18-15	Area	834910.3	818013.6	3	30	6	0.5	0.00006122	0	0.00006122	0
EP18-16	Area	834940.1	818016.7	3	30	6	0.5	0.00006122	0	0.00006122	0
EP18-17	Area	834959.7	818019.9	3	8.7	6	0.5	0.00006122	0	0.00006122	0
EP19-1	Area	834795.6	817994.8	3	30	7.8	0.5	0.000054404	0	0.000054404	0
EP19-2	Area	834795.3	817998.9	3	30	7.8	0.5	0.000054404	0	0.000054404	0
EP19-3	Area	834825.0	818003.0	3	30	7.8	0.5	0.000054404	0	0.000054404	0
EP19-4	Area	834854.8	818007.0	3	30	7.8	0.5	0.000054404	0	0.000054404	0
EP19-5	Area	834884.0	818011.1	3	12.3	7.8	0.5	0.000054404	0	0.000054404	0
EP19-6	Area	834650.1	817983.1	3	30	5.7	0.5	0.000054404	0	0.000054404	0
EP19-7	Area	834680.0	817986.1	3	30	5.7	0.5	0.000054404	0	0.000054404	0
EP19-8	Area	834709.8	817989.0	3	30	5.7	0.5	0.000054404	0	0.000054404	0
EP19-9	Area	834739.7	817992.0	3	30	5.7	0.5	0.000054404	0	0.000054404	0
EP19-10	Area	834760.2	817994.9	3	7.8	5.7	0.5	0.000054404	0	0.000054404	0
EP19-11	Area	834600.9	817978.2	3	30	5.7	0.5	0.000054404	0	0.000054404	0
EP19-12	Area	834626.3	817981.2	3	19.4	5.7	0.5	0.000054404	0	0.000054404	0
EP20-1	Area	834900.8	817976.4	3	30	89.2	0.5	0.000023102	0	0.000023102	0
EP20-2	Area	834901.2	818006.4	3	30	89.2	0.5	0.000023102	0	0.000023102	0
EP20-3	Area	834901.6	818036.4	3	30	89.2	0.5	0.000023102	0	0.000023102	0
EP20-4	Area	834902.0	818066.4	3	30	89.2	0.5	0.000023102	0	0.000023102	0
EP20-5	Area	834902.4	818096.4	3	30	89.2	0.5	0.000023102	0	0.000023102	0
EP20-6	Area	834900.9	818126.4	3	18.6	89.2	0.5	0.000023102	0	0.000023102	0
EP21-1	Area	835222.1	818158.9	3	20.1	31.8	0.5	0.000002727	0	0.000002727	0
EP21-2	Area	835202.8	818136.3	3	10.2	13.9	0.5	0.000002727	0	0.000002727	0
EP22-1	Area	835212.1	818138.2	3	19.3	35.7	0.5	0.000015248	0	0.000015248	0
EP22-2	Area	835219.6	818178.4	3	22.3	55.1	0.5	0.000015248	0	0.000015248	0
EP23-1	Area	835203.7	818113.6	3	7.8	46.4	0.5	0.000003258	0	0.000003258	0
EP23-2	Area	835212.2	818144.1	3	15.9	8	0.5	0.000003258	0	0.000003258	0
EP23-3	Area	835195.1	818122.7	3	22.9	9.5	0.5	0.000003258	0	0.000003258	0
HR7A2	Line	834987.0	818125.7	834987	817985.7	6	0.5	0.000193052	0	0.000193052	0
HR7B	Line	834964.1	817983.2	834895.8	817976	6	0.5	0.000193052	0	0.000193052	0
HR7C	Line	834898.1	818144.6	834895.8	817976	6	0.5	0.000193052	0	0.000193052	0
HR8A	Line	834895.8	817976.0	834764.7	817958	6	0.5	0.000386104	0	0.000386104	0
HR8B	Line	834767.7	817958.0	834637.5	817945.4	6	0.5	0.000386104	0	0.000386104	0
HR9	Line	834637.5	817945.4	834588.3	817940.5	6	0.5	0.000308884	0	0.000308884	0
HR10A	Line	834588.3	817940.5	834519.6	817934.4	6	0.5	0.000231663	0	0.000231663	0
HR10B	Line	834519.6	817934.4	834425.8	817897.2	6	0.5	0.000231663	0	0.000231663	0
HR10C	Line	834425.8	817897.2	834389.4	817855.7	6	0.5	0.000231663	0	0.000231663	0
HR11	Line	834389.4	817855.7	834313.9	817770	6	0.5	0.000154442	0	0.000154442	0
HR12A	Line	834313.9	817770.0	834289.8	817763.6	6	0.5	0.000077221	0	0.000077221	0
BP4	Point	834640.0	817930.5	0	0	0	0.5	0.00426664	0	0.00426664	0
BP5	Point	834591.9	817924.7	0	0	0	0.5	0.00426664	0	0.00426664	0
BP6	Point	834397.5	817847.6	0	0	0	0.5	0.00426664	0	0.00426664	0
BP7	Point	834328.6	817755.8	0	0	0	0.5	0.00426664	0	0.00426664	0
PEP1	Point	835164.5	818031.6	0	0	0	22	0.014833	0	0.014833	0
PEP2	Point	835164.1	818035.0	0	0	0	22	0.014833	0	0.014833	0
PEP3	Point	835169.7	818027.7	0	0	0	22	0.014833	0	0.014833	0
PEP4	Point	835170.0	818024.4	0	0	0	22	0.014833	0	0.014833	0
PEP5	Point	835172.9	818028.1	0	0	0	22	0.014833	0	0.014833	0
PEP6	Point	835167.6	818035.4	0	0	0	22	0.014833	0	0.014833	0
PEP7	Point	835167.9	818032.0	0	0	0	22	0.014833	0	0.014833	0
PEP8	Point	835171.5	818026.3	0	0	0	22	0.019778	0	0.019778	0
PEP9	Point	835212.2	818045.3	0	0	0	22	0.063150599	0	0.063150599	0
PEP10	Point	834543.2	817932.8	0	0	0	22	0.063150599	0	0.063150599	0
AEP 1-1	Area	834545.7	817933.2	3	30	81.6	0.5	0.000140892	0	0.000140892	0
AEP 1-2	Area	834575.4	817937.6	3	30	80	0.5	0.000140892	0	0.000140892	0
AEP 1-3	Area	834604.9	817942.8	3	30	80.2	0.5	0.000140892	0	0.000140892	0

AEP 1-4	Area	834634.5	817947.9	3	30	80	0.5	0.000140892	0	0.000140892	0
AEP 1-5	Area	834664.0	817953.1	3	30	80.2	0.5	0.000140892	0	0.000140892	0
AEP 1-6	Area	834693.6	817958.2	3	30	80	0.5	0.000140892	0	0.000140892	0
AEP 1-7	Area	834723.1	817963.4	3	30	82.7	0.5	0.000140892	0	0.000140892	0
AEP 1-8	Area	834752.9	817967.2	3	29.9	82.7	0.5	0.000140892	0	0.000140892	0
AEP 1-9	Area	834782.6	817971.0	3	30	82.7	0.5	0.000140892	0	0.000140892	0
AEP 1-10	Area	834812.4	817974.8	3	30	82.7	0.5	0.000140892	0	0.000140892	0
AEP 1-11	Area	834842.2	817978.6	3	29.9	82.7	0.5	0.000140892	0	0.000140892	0
AEP 1-12	Area	834871.9	817982.4	3	24.2	82.6	0.5	0.000140892	0	0.000140892	0
AEP 2-1	Area	834895.9	817985.6	3	30	0.8	0.5	0.000059858	0	0.000059858	0
AEP 2-2	Area	834896.3	818015.6	3	30	0.6	0.5	0.000059858	0	0.000059858	0
AEP 2-3	Area	834896.6	818045.6	3	30	0.8	0.5	0.000059858	0	0.000059858	0
AEP 2-4	Area	834897.0	818075.6	3	30	0.6	0.5	0.000059858	0	0.000059858	0
AEP 2-5	Area	834897.3	818105.6	3	30	0.8	0.5	0.000059858	0	0.000059858	0
AEP 2-6	Area	834897.7	818135.6	3	30	0.8	0.5	0.000059858	0	0.000059858	0
AEP 2-7	Area	834898.1	818165.6	3	3.5	0	0.5	0.000059858	0	0.000059858	0
AEP 3-1	Area	834895.9	817985.5	3	30	82.9	0.5	0.000165407	0	0.000165407	0
AEP 3-2	Area	834925.7	817989.2	3	29.9	82.7	0.5	0.000165407	0	0.000165407	0
AEP 3-3	Area	834955.4	817993.0	3	30	82.7	0.5	0.000165407	0	0.000165407	0
AEP 3-4	Area	834985.2	817996.8	3	25	82.7	0.5	0.000165407	0	0.000165407	0
AEP 3-5	Area	835015.0	818000.6	3	29.9	82.7	0.5	0	0	0	0
AEP 3-6	Area	835044.7	818004.4	3	30	82.7	0.5	0	0	0	0
AEP 3-7	Area	835074.5	818008.2	3	29.9	82.7	0.5	0	0	0	0
AEP 3-8	Area	835104.2	818012.0	3	30	82.7	0.5	0	0	0	0
AEP 3-9	Area	835134.0	818015.8	3	22.8	82.7	0.5	0	0	0	0
AEP 4-1	Area	835156.6	818018.7	3	23.4	82.9	0.5	0	0	0	0
AEP 5-1	Area	835156.6	818018.7	3	13.8	-3.7	0.5	0	0	0	0
AEP 6-1	Area	835179.8	818021.6	3	5.7	74.7	0.5	0.000035343	0	0.000035343	0
AEP 6-2	Area	835185.3	818023.1	3	18.1	24.9	0.5	0.000035343	0	0.000035343	0
AEP 6-3	Area	835192.9	818039.5	3	25	-124.4	0.5	0.000035343	0	0.000035343	0
AEP 7-1	Area	835179.7	818021.5	3	17.7	90.6	0.5	0	0	0	0
AEP 7-2	Area	835197.4	818021.3	3	30	58.5	0.5	0	0	0	0
AEP 7-3	Area	835223.0	818037.0	3	11.5	25.2	0.5	0	0	0	0
AEP 8-1	Area	835212.2	818045.3	3	15.8	82.4	0.5	0.00010555	0	0.00010555	0
AEP 9-1	Area	835156.6	818018.7	3	13.8	-3.7	0.5	0	0	0	0
AEP 9-2	Area	835179.8	818021.6	3	17.8	70.6	0.5	0.000007624	0	0.000007624	0
AEP 10-1	Area	835156.6	818018.7	3	23.4	82.9	0.5	0	0	0	0
AEP 11-1	Area	835172.3	818025.4	3	24.4	85.1	0.5	0.000082936	0	0.000082936	0
AEP 12-1	Area	835196.6	818027.5	3	16.2	66.8	0.5	0.000090559	0	0.000090559	0
AEP 12-2	Area	835211.5	818033.9	3	30	42.3	0.5	0.000090559	0	0.000090559	0
AEP 13-1	Area	835231.7	818056.0	3	30	1.7	0.5	0	0	0	0
AEP 13-2	Area	835232.6	818086.0	3	30	13.5	0.5	0	0	0	0
AEP 13-3a	Area	835239.6	818115.2	3	15	19.1	0.5	0	0	0	0
AEP 13-3b	Area	835247.8	818138.8	3	15	19.1	0.5	0.000090559	0	0.000090559	0
AEP 13-4	Area	835249.4	818143.5	3	30	-2.7	0.5	0.000090559	0	0.000090559	0
AEP 13-5	Area	835248.0	818173.5	3	30	-2.5	0.5	0.000090559	0	0.000090559	0
AEP 14-1	Area	835212.2	818045.3	3	15.8	82.4	0.5	0.000049152	0	0.000049152	0
AEP 14-2	Area	835190.4	818022.6	3	7.9	51.7	0.5	0.000049152	0	0.000049152	0
AEP 14-3	Area	835196.6	818027.5	3	16.2	66.8	0.5	0.000049152	0	0.000049152	0
AEP 14-4	Area	835211.5	818033.9	3	21.2	50.5	0.5	0.000049152	0	0.000049152	0
AEP 15-1	Area	835156.6	818015.7	3	30	82.9	0.5	0	0	0	0
AEP 15-2	Area	835186.4	818019.4	3	5.1	51.3	0.5	0	0	0	0
AEP 16-1	Area	834892.9	817982.2	3	29.9	82.9	0.5	0.000131751	0	0.000131751	0
AEP 16-2	Area	834922.6	817985.9	3	30	82.7	0.5	0.000131751	0	0.000131751	0
AEP 16-3	Area	834952.4	817989.7	3	30	82.7	0.5	0.000131751	0	0.000131751	0
AEP 16-4	Area	834982.2	817993.5	3	29.9	82.7	0.5	0.000131751	0	0.000131751	0
AEP 16-5	Area	835011.9	817997.3	3	30	82.7	0.5	0	0	0	0
AEP 16-6	Area	835041.7	818001.1	3	29.9	82.9	0.5	0	0	0	0
AEP 16-7	Area	835071.4	818004.8	3	30	82.7	0.5	0	0	0	0
AEP 16-8	Area	835101.2	818008.6	3	30	82.7	0.5	0	0	0	0
AEP 16-9	Area	835131.0	818012.4	3	25.8	82.7	0.5	0	0	0	0
AEP 17-1	Area	834545.7	817933.2	3	30	81.6	0.5	0.000132191	0	0.000132191	0
AEP 17-2	Area	834575.4	817937.6	3	30.1	81.2	0.5	0.000132191	0	0.000132191	0
AEP 17-3	Area	834605.1	817942.2	3	30	81.2	0.5	0.000132191	0	0.000132191	0
AEP 17-4	Area	834634.7	817946.8	3	30	81.4	0.5	0.000132191	0	0.000132191	0
AEP 17-5	Area	834664.4	817951.3	3	30	81.2	0.5	0.000132191	0	0.000132191	0
AEP 17-6	Area	834694.0	817955.9	3	30	81.4	0.5	0.000132191	0	0.000132191	0
AEP 17-7	Area	834723.7	817960.4	3	30	82.5	0.5	0.000132191	0	0.000132191	0
AEP 17-8	Area	834753.4	817964.3	3	30	82.7	0.5	0.000132191	0	0.000132191	0
AEP 17-9	Area	834783.2	817968.1	3	29.9	82.7	0.5	0.000132191	0	0.000132191	0
AEP 17-10	Area	834812.9	817971.9	3	30	82.7	0.5	0.000132191	0	0.000132191	0
AEP 17-11	Area	834842.7	817975.7	3	29.9	82.7	0.5	0.000132191	0	0.000132191	0
AEP 17-12	Area	834872.4	817979.5	3	20.7	82.5	0.5	0.000132191	0	0.000132191	0

Note:  
The percentage of active area of WKCD has been included in the emission factor.

Appendix 3.8 - Input Parameters for WKCD of Year 2014 for Annual Emission

ID	Source Type	Coordinates of Centroid		Dimension (m)		Width /Angle	Height (m)	Emission Rate (g/s or g/s/m^2)			
		X	Y	Width	Length			Heavy Construction	Wind Erosion	Working Hour	Non-Working Hour
C1	Area	834297.5	818332.8	145	23.5	55	0	0.000001988	0.00000027	0.000002258	0.00000027
C2	Area	834132.0	818269.2	240.1	5.5	0	0	0.000001988	0.00000027	0.000002258	0.00000027
C3	Area	834015.5	818232.9	67	11.5	-90	0	0.000001988	0.00000027	0.000002258	0.00000027
C4	Area	833988.0	818173.2	68	11	53.6	0	0.000001988	0.00000027	0.000002258	0.00000027
C5	Area	833961.1	818108.0	69	22.5	-89.9	0	0.000001988	0.00000027	0.000002258	0.00000027
C6	Area	833956.4	818048.8	49.5	12.9	-89.9	0	0.000001988	0.00000027	0.000002258	0.00000027
C7	Area	833987.7	817947.4	27.6	27.6	-89.9	0	0.000001988	0.00000027	0.000002258	0.00000027
C8	Area	833959.6	817882.0	64	18.7	-89.9	0	0.000001988	0.00000027	0.000002258	0.00000027
C9	Area	833959.6	817882.0	64	18.7	-89.9	0	0.000001988	0.00000027	0.000002258	0.00000027
C10	Area	833981.7	817816.7	74	14	-51.7	0	0.000001988	0.00000027	0.000002258	0.00000027
C14	Area	834200.5	817800.9	72	65	90	0	0.000001988	0.00000027	0.000002258	0.00000027
C15	Area	834456.1	818201.7	20	19	49	0	0.000019879	0.000002696	0.000022575	0.000002696
C16	Area	834427.0	818148.3	69	10	44.2	0	0.000001988	0.00000027	0.000002258	0.00000027
C17	Area	834473.0	818158.6	55.6	33.5	-86	0	0.000001988	0.00000027	0.000002258	0.00000027
C18	Area	834430.5	818042.8	174.6	53	55.4	0	0.000001988	0.00000027	0.000002258	0.00000027
C26	Area	834681.4	818144.2	140	17.5	4	0	0.00000179	0.000000243	0.000002033	0.000000243
C27	Area	834723.0	818108.5	62	59.7	4	0	0.00000179	0.000000243	0.000002033	0.000000243
C28	Area	834624.9	818001.4	251.5	15.2	4	0	0.00000179	0.000000243	0.000002033	0.000000243
C29	Area	834807.7	818022.3	116	80	4	0	0.00000179	0.000000243	0.000002033	0.000000243
C32	Area	834946.6	818141.7	49.7	48.6	-86	0	0.00000179	0.000000243	0.000002033	0.000000243
C33	Area	834953.3	818097.2	55.8	40	4	0	0.00000179	0.000000243	0.000002033	0.000000243
C37	Area	835075.4	818024.0	61.6	22	4	0	0.000008946	0.000001213	0.000010159	0.000001213
C39	Area	835128.2	818040.3	52.9	46	-86	0	0.000008946	0.000001213	0.000010159	0.000001213
C41	Area	835166.8	818055.4	33.3	28	4	0	0.000008946	0.000001213	0.000010159	0.000001213
C42	Area	835185.2	818032.7	66.6	20	4	0	0.000008946	0.000001213	0.000010159	0.000001213
C45	Area	835243.1	818179.4	46.8	20.3	4	0	0.000000199	0.000000027	0.000000226	0.000000027
C46	Area	835236.6	818129.6	78.2	27	-86	0	0.000000199	0.000000027	0.000000226	0.000000027
C47	Area	835265.1	818138.2	65	31	-86	0	0.000000199	0.000000027	0.000000226	0.000000027
C48	Area	835305.0	818188.4	78	29.6	3.8	0	0.000000199	0.000000027	0.000000226	0.000000027
C49	Area	835303.7	818141.0	65	46.2	-86.4	0	0.000000199	0.000000027	0.000000226	0.000000027
C50	Area	835284.6	818100.4	64.6	13.2	4	0	0.000000199	0.000000027	0.000000226	0.000000027
C51	Area	835331.2	818146.2	58.2	8.8	-85.8	0	0.000000199	0.000000027	0.000000226	0.000000027
C52	Area	835326.8	818106.7	20.4	20	4	0	0.000000199	0.000000027	0.000000226	0.000000027
C53	Area	834539.3	818188.9	49.9	9	76.6	0	0.000019879	0.000002696	0.000022575	0.000002696
C54	Area	835303.8	818216.5	26.6	9.7	-87.6	0	0.000019879	0.000002696	0.000022575	0.000002696
CB1	Area	834306.9	818306.0	22.6	15.7	-35	0	0.000019879	0.000002696	0.000022575	0.000002696
CB2	Area	834430.0	818240.2	19.1	14	-35.5	0	0.000019879	0.000002696	0.000022575	0.000002696
CB3	Area	834488.0	818525.7	14.4	12	-22.4	0	0.000019879	0.000002696	0.000022575	0.000002696
CB4	Area	835360.4	818024.9	33.2	16.2	5	0	0.000019879	0.000002696	0.000022575	0.000002696
CB5	Area	834573.8	818490.4	32.8	11.9	-22.4	0	0.000019879	0.000002696	0.000022575	0.000002696
EP1	Point	835199.6	818095.5	0	0	0	13	0.016666667	0	0.016666667	0
EP2	Point	835197.6	818087.0	0	0	0	13	0.016666667	0	0.016666667	0
EP3	Point	835198.7	818094.0	0	0	0	13	0.00022984	0	0.00022984	0
EP4	Point	835196.5	818085.7	0	0	0	13	0.00022984	0	0.00022984	0
EP5	Point	835205.4	818088.9	0	0	0	20	0.010833334	0	0.010833334	0
EP6	Point	835207.0	818095.3	0	0	0	20	0.010833334	0	0.010833334	0
EP7	Point	835194.8	818092.4	0	0	0	20	0.010833334	0	0.010833334	0
EP8	Point	835205.8	818083.0	0	0	0	20	0.010833334	0	0.010833334	0
EP9	Point	835232.6	818123.4	0	0	0	4	0.001635902	0	0.001635902	0
EP10	Point	834584.4	817939.9	0	0	0	7	0.001635902	0	0.001635902	0
EP11-1	Area	834978.3	818020.7	3	30	12.7	0.5	0.000163385	0	0.000163385	0
EP11-2	Area	835007.6	818027.3	3	30	12.7	0.5	0.000163385	0	0.000163385	0
EP11-3	Area	835032.4	818033.9	3	20.8	12.7	0.5	0.000163385	0	0.000163385	0
EP11-4	Area	835050.1	818040.9	3	30	7.3	0.5	0.000163385	0	0.000163385	0
EP11-5	Area	835079.9	818044.7	3	30	7.3	0.5	0.000163385	0	0.000163385	0
EP11-6	Area	835109.6	818048.5	3	30	7.3	0.5	0.000163385	0	0.000163385	0
EP11-7	Area	835139.4	818052.3	3	30	7.3	0.5	0.000163385	0	0.000163385	0
EP11-8	Area	835169.2	818056.1	3	30	7.3	0.5	0.000163385	0	0.000163385	0
EP11-9	Area	835186.0	818066.7	3	30	8.2	0.5	0.000163385	0	0.000163385	0
EP11-10	Area	835219.2	818062.5	3	9.1	8.2	0.5	0.000163385	0	0.000163385	0
EP11-11	Area	835239.5	818023.8	3	20	75.6	0.5	0.000163385	0	0.000163385	0
EP11-12	Area	835232.0	818033.9	3	30	96.1	0.5	0.000163385	0	0.000163385	0
EP11-13	Area	835229.6	818063.7	3	21.7	96.1	0.5	0.000163385	0	0.000163385	0
EP11-14	Area	835228.9	818089.7	3	8.1	86.3	0.5	0.000163385	0	0.000163385	0
EP11-15	Area	835244.5	818102.7	3	30	75.2	0.5	0.000163385	0	0.000163385	0
EP11-16	Area	835241.5	818131.7	3	8.2	75.2	0.5	0.000163385	0	0.000163385	0
EP12-1	Area	834909.9	818016.6	3	30	6	0.5	0.00014248	0	0.00014248	0
EP12-2	Area	834939.8	818019.7	3	30	6	0.5	0.00014248	0	0.00014248	0
EP12-3	Area	834951.0	818024.2	3	8.4	3	0.5	0.00014248	0	0.00014248	0
EP12-4	Area	834765.2	817997.8	3	30	7.8	0.5	0.00014248	0	0.00014248	0
EP12-5	Area	834795.0	818001.9	3	30	7.8	0.5	0.00014248	0	0.00014248	0
EP12-6	Area	834824.7	818005.9	3	30	7.8	0.5	0.00014248	0	0.00014248	0
EP12-7	Area	834854.4	818010.0	3	30	7.8	0.5	0.00014248	0	0.00014248	0
EP12-8	Area	834895.8	818015.0	3	30	5.7	0.5	0.00014248	0	0.00014248	0
EP12-9	Area	834649.8	817986.1	3	30	5.7	0.5	0.00014248	0	0.00014248	0
EP12-10	Area	834679.7	817989.0	3	30	5.7	0.5	0.00014248	0	0.00014248	0
EP12-11	Area	834709.5	817992.0	3	30	5.7	0.5	0.00014248	0	0.00014248	0
EP12-12	Area	834739.4	817995.0	3	30	5.7	0.5	0.00014248	0	0.00014248	0
EP12-13	Area	834759.9	817997.9	3	7.8	5.7	0.5	0.00014248	0	0.00014248	0



EP12-14	Area	834600.6	817981.2	3	30	5.7	0.5	0.00014248	0	0.00014248	0
EP12-15	Area	834626.0	817984.2	3	19.4	5.7	0.5	0.00014248	0	0.00014248	0
EP13-1	Area	834897.8	817976.4	3	30	89.2	0.5	0.000063499	0	0.000063499	0
EP13-2	Area	834898.2	818006.4	3	30	89.2	0.5	0.000063499	0	0.000063499	0
EP13-3	Area	834898.6	818036.4	3	30	89.2	0.5	0.000063499	0	0.000063499	0
EP13-4	Area	834899.0	818066.4	3	30	89.2	0.5	0.000063499	0	0.000063499	0
EP13-5	Area	834899.4	818096.4	3	30	89.2	0.5	0.000063499	0	0.000063499	0
EP13-6	Area	834897.9	818126.4	3	18.6	89.2	0.5	0.000063499	0	0.000063499	0
EP14-1	Area	835223.4	818149.1	3	19.1	11.6	0.5	0.000008362	0	0.000008362	0
EP14-2	Area	835210.1	818188.3	3	21	71.7	0.5	0.000008362	0	0.000008362	0
EP14-3	Area	835204.0	818136.5	3	19.3	13.9	0.5	0.000008362	0	0.000008362	0
EP15-1	Area	835212.7	818158.4	3	19.3	1.8	0.5	0.000039954	0	0.000039954	0
EP15-2	Area	835220.7	818146.6	3	19.6	24.3	0.5	0.000039954	0	0.000039954	0
EP16-1	Area	835211.8	818147.7	3	30	13.8	0.5	0.000017038	0	0.000017038	0
EP16-2	Area	835205.7	818187.3	3	25.9	77.2	0.5	0.000017038	0	0.000017038	0
EP17-1	Area	835213.0	818125.9	3	19.9	19.8	0.5	0.00000852	0	0.00000852	0
EP17-2	Area	835195.8	818120.1	3	23	15.3	0.5	0.00000852	0	0.00000852	0
EP18-1	Area	834979.0	818017.8	3	30	12.7	0.5	0.00006122	0	0.00006122	0
EP18-2	Area	835008.3	818024.4	3	30	12.7	0.5	0.00006122	0	0.00006122	0
EP18-3	Area	835032.8	818031.0	3	20.5	12.7	0.5	0.00006122	0	0.00006122	0
EP18-4	Area	835050.5	818037.9	3	30	7.3	0.5	0.00006122	0	0.00006122	0
EP18-5	Area	835080.3	818041.7	3	30	7.3	0.5	0.00006122	0	0.00006122	0
EP18-6	Area	835110.0	818045.5	3	30	7.3	0.5	0.00006122	0	0.00006122	0
EP18-7	Area	835139.8	818049.3	3	30	7.3	0.5	0.00006122	0	0.00006122	0
EP18-8	Area	835169.5	818053.1	3	30	7.3	0.5	0.00006122	0	0.00006122	0
EP18-9	Area	835185.0	818063.9	3	30	8.3	0.5	0.00006122	0	0.00006122	0
EP18-10	Area	835218.7	818059.5	3	11	8.3	0.5	0.00006122	0	0.00006122	0
EP18-11	Area	835243.4	818020.4	3	23.2	75.6	0.5	0.00006122	0	0.00006122	0
EP18-12	Area	835235.0	818033.7	3	30	96.1	0.5	0.00006122	0	0.00006122	0
EP18-13	Area	835232.5	818063.5	3	22.2	96.1	0.5	0.00006122	0	0.00006122	0
EP18-14	Area	835232.6	818089.9	3	7	86.5	0.5	0.00006122	0	0.00006122	0
EP18-15	Area	834910.3	818013.6	3	30	6	0.5	0.00006122	0	0.00006122	0
EP18-16	Area	834940.1	818016.7	3	30	6	0.5	0.00006122	0	0.00006122	0
EP18-17	Area	834959.7	818019.9	3	8.7	6	0.5	0.00006122	0	0.00006122	0
EP19-1	Area	834795.6	817994.8	3	30	7.8	0.5	0.000054404	0	0.000054404	0
EP19-2	Area	834795.3	817998.9	3	30	7.8	0.5	0.000054404	0	0.000054404	0
EP19-3	Area	834825.0	818003.0	3	30	7.8	0.5	0.000054404	0	0.000054404	0
EP19-4	Area	834854.8	818007.0	3	30	7.8	0.5	0.000054404	0	0.000054404	0
EP19-5	Area	834884.0	818011.1	3	12.3	7.8	0.5	0.000054404	0	0.000054404	0
EP19-6	Area	834650.1	817983.1	3	30	5.7	0.5	0.000054404	0	0.000054404	0
EP19-7	Area	834680.0	817986.1	3	30	5.7	0.5	0.000054404	0	0.000054404	0
EP19-8	Area	834709.8	817989.0	3	30	5.7	0.5	0.000054404	0	0.000054404	0
EP19-9	Area	834739.7	817992.0	3	30	5.7	0.5	0.000054404	0	0.000054404	0
EP19-10	Area	834760.2	817994.9	3	7.8	5.7	0.5	0.000054404	0	0.000054404	0
EP19-11	Area	834600.9	817978.2	3	30	5.7	0.5	0.000054404	0	0.000054404	0
EP19-12	Area	834626.3	817981.2	3	19.4	5.7	0.5	0.000054404	0	0.000054404	0
EP20-1	Area	834900.8	817976.4	3	30	89.2	0.5	0.000023102	0	0.000023102	0
EP20-2	Area	834901.2	818006.4	3	30	89.2	0.5	0.000023102	0	0.000023102	0
EP20-3	Area	834901.6	818036.4	3	30	89.2	0.5	0.000023102	0	0.000023102	0
EP20-4	Area	834902.0	818066.4	3	30	89.2	0.5	0.000023102	0	0.000023102	0
EP20-5	Area	834902.4	818096.4	3	30	89.2	0.5	0.000023102	0	0.000023102	0
EP20-6	Area	834900.9	818126.4	3	18.6	89.2	0.5	0.000023102	0	0.000023102	0
EP21-1	Area	835222.1	818158.9	3	20.1	31.8	0.5	0.000002727	0	0.000002727	0
EP21-2	Area	835202.8	818136.3	3	10.2	13.9	0.5	0.000002727	0	0.000002727	0
EP22-1	Area	835212.1	818138.2	3	19.3	35.7	0.5	0.000015248	0	0.000015248	0
EP22-2	Area	835219.6	818178.4	3	22.3	55.1	0.5	0.000015248	0	0.000015248	0
EP23-1	Area	835203.7	818113.6	3	7.8	46.4	0.5	0.000003258	0	0.000003258	0
EP23-2	Area	835212.2	818144.1	3	15.9	8	0.5	0.000003258	0	0.000003258	0
EP23-3	Area	835195.1	818122.7	3	22.9	9.5	0.5	0.000003258	0	0.000003258	0
HR7A2	Line	834987.0	818125.7	834987	817985.7	6	0.5	0.000193052	0	0.000193052	0
HR7B	Line	834964.1	817983.2	834895.8	817976	6	0.5	0.000193052	0	0.000193052	0
HR7C	Line	834898.1	818144.6	834895.8	817976	6	0.5	0.000193052	0	0.000193052	0
HR8A	Line	834895.8	817976.0	834764.7	817958	6	0.5	0.000386104	0	0.000386104	0
HR8B	Line	834767.7	817958.0	834637.5	817945.4	6	0.5	0.000386104	0	0.000386104	0
HR9	Line	834637.5	817945.4	834588.3	817940.5	6	0.5	0.000308884	0	0.000308884	0
HR10A	Line	834588.3	817940.5	834519.6	817934.4	6	0.5	0.000231663	0	0.000231663	0
HR10B	Line	834519.6	817934.4	834425.8	817897.2	6	0.5	0.000231663	0	0.000231663	0
HR10C	Line	834425.8	817897.2	834389.4	817855.7	6	0.5	0.000231663	0	0.000231663	0
HR11	Line	834389.4	817855.7	834313.9	817770	6	0.5	0.000154442	0	0.000154442	0
HR12A	Line	834313.9	817770.0	834289.8	817763.6	6	0.5	0.000077221	0	0.000077221	0
BP4	Point	834640.0	817930.5	0	0	0	0.5	0.00426664	0	0.00426664	0
BP5	Point	834591.9	817924.7	0	0	0	0.5	0.00426664	0	0.00426664	0
BP6	Point	834397.5	817847.6	0	0	0	0.5	0.00426664	0	0.00426664	0
BP7	Point	834328.6	817755.8	0	0	0	0.5	0.00426664	0	0.00426664	0
PEP1	Point	835164.5	818031.6	0	0	0	22	0.014833	0	0.014833	0
PEP2	Point	835164.1	818035.0	0	0	0	22	0.014833	0	0.014833	0
PEP3	Point	835169.7	818027.7	0	0	0	22	0.014833	0	0.014833	0
PEP4	Point	835170.0	818024.4	0	0	0	22	0.014833	0	0.014833	0
PEP5	Point	835172.9	818028.1	0	0	0	22	0.014833	0	0.014833	0
PEP6	Point	835167.6	818035.4	0	0	0	22	0.014833	0	0.014833	0
PEP7	Point	835167.9	818032.0	0	0	0	22	0.014833	0	0.014833	0
PEP8	Point	835171.5	818026.3	0	0	0	22	0.019778	0	0.019778	0
PEP9	Point	835212.2	818045.3	0	0	0	22	0.063150599	0	0.063150599	0

PEP10	Point	834543.2	817932.8	0	0	0	22	0.063150599	0	0.063150599	0
AEP 1-1	Area	834545.7	817933.2	3	30	81.6	0.5	0.000140892	0	0.000140892	0
AEP 1-2	Area	834575.4	817937.6	3	30	80	0.5	0.000140892	0	0.000140892	0
AEP 1-3	Area	834604.9	817942.8	3	30	80.2	0.5	0.000140892	0	0.000140892	0
AEP 1-4	Area	834634.5	817947.9	3	30	80	0.5	0.000140892	0	0.000140892	0
AEP 1-5	Area	834664.0	817953.1	3	30	80.2	0.5	0.000140892	0	0.000140892	0
AEP 1-6	Area	834693.6	817958.2	3	30	80	0.5	0.000140892	0	0.000140892	0
AEP 1-7	Area	834723.1	817963.4	3	30	82.7	0.5	0.000140892	0	0.000140892	0
AEP 1-8	Area	834752.9	817967.2	3	29.9	82.7	0.5	0.000140892	0	0.000140892	0
AEP 1-9	Area	834782.6	817971.0	3	30	82.7	0.5	0.000140892	0	0.000140892	0
AEP 1-10	Area	834812.4	817974.8	3	30	82.7	0.5	0.000140892	0	0.000140892	0
AEP 1-11	Area	834842.2	817978.6	3	29.9	82.7	0.5	0.000140892	0	0.000140892	0
AEP 1-12	Area	834871.9	817982.4	3	24.2	82.6	0.5	0.000140892	0	0.000140892	0
AEP 2-1	Area	834895.9	817985.6	3	30	0.8	0.5	0.000059858	0	0.000059858	0
AEP 2-2	Area	834896.3	818015.6	3	30	0.6	0.5	0.000059858	0	0.000059858	0
AEP 2-3	Area	834896.6	818045.6	3	30	0.8	0.5	0.000059858	0	0.000059858	0
AEP 2-4	Area	834897.0	818075.6	3	30	0.6	0.5	0.000059858	0	0.000059858	0
AEP 2-5	Area	834897.3	818105.6	3	30	0.8	0.5	0.000059858	0	0.000059858	0
AEP 2-6	Area	834897.7	818135.6	3	30	0.8	0.5	0.000059858	0	0.000059858	0
AEP 2-7	Area	834898.1	818165.6	3	3.5	0	0.5	0.000059858	0	0.000059858	0
AEP 3-1	Area	834895.9	817985.5	3	30	82.9	0.5	0.000165407	0	0.000165407	0
AEP 3-2	Area	834925.7	817989.2	3	29.9	82.7	0.5	0.000165407	0	0.000165407	0
AEP 3-3	Area	834955.4	817993.0	3	30	82.7	0.5	0.000165407	0	0.000165407	0
AEP 3-4	Area	834985.2	817996.8	3	25	82.7	0.5	0.000165407	0	0.000165407	0
AEP 3-5	Area	835015.0	818000.6	3	29.9	82.7	0.5	0	0	0	0
AEP 3-6	Area	835044.7	818004.4	3	30	82.7	0.5	0	0	0	0
AEP 3-7	Area	835074.5	818008.2	3	29.9	82.7	0.5	0	0	0	0
AEP 3-8	Area	835104.2	818012.0	3	30	82.7	0.5	0	0	0	0
AEP 3-9	Area	835134.0	818015.8	3	22.8	82.7	0.5	0	0	0	0
AEP 4-1	Area	835156.6	818018.7	3	23.4	82.9	0.5	0	0	0	0
AEP 5-1	Area	835156.6	818018.7	3	13.8	-3.7	0.5	0	0	0	0
AEP 6-1	Area	835179.8	818021.6	3	5.7	74.7	0.5	0.000035343	0	0.000035343	0
AEP 6-2	Area	835185.3	818023.1	3	18.1	24.9	0.5	0.000035343	0	0.000035343	0
AEP 6-3	Area	835192.9	818039.5	3	25	-124.4	0.5	0.000035343	0	0.000035343	0
AEP 7-1	Area	835179.7	818021.5	3	17.7	90.6	0.5	0	0	0	0
AEP 7-2	Area	835197.4	818021.3	3	30	58.5	0.5	0	0	0	0
AEP 7-3	Area	835223.0	818037.0	3	11.5	25.2	0.5	0	0	0	0
AEP 8-1	Area	835212.2	818045.3	3	15.8	82.4	0.5	0.00010555	0	0.00010555	0
AEP 9-1	Area	835156.6	818018.7	3	13.8	-3.7	0.5	0	0	0	0
AEP 9-2	Area	835179.8	818021.6	3	17.8	70.6	0.5	0.000007624	0	0.000007624	0
AEP 10-1	Area	835156.6	818018.7	3	23.4	82.9	0.5	0	0	0	0
AEP 11-1	Area	835172.3	818025.4	3	24.4	85.1	0.5	0.000082936	0	0.000082936	0
AEP 12-1	Area	835196.6	818027.5	3	16.2	66.8	0.5	0.000090559	0	0.000090559	0
AEP 12-2	Area	835211.5	818033.9	3	30	42.3	0.5	0.000090559	0	0.000090559	0
AEP 13-1	Area	835231.7	818056.0	3	30	1.7	0.5	0	0	0	0
AEP 13-2	Area	835232.6	818086.0	3	30	13.5	0.5	0	0	0	0
AEP 13-3a	Area	835239.6	818115.2	3	15	19.1	0.5	0	0	0	0
AEP 13-3b	Area	835247.8	818138.8	3	15	19.1	0.5	0.000090559	0	0.000090559	0
AEP 13-4	Area	835249.4	818143.5	3	30	-2.7	0.5	0.000090559	0	0.000090559	0
AEP 13-5	Area	835248.0	818173.5	3	30	-2.5	0.5	0.000090559	0	0.000090559	0
AEP 14-1	Area	835212.2	818045.3	3	15.8	82.4	0.5	0.000049152	0	0.000049152	0
AEP 14-2	Area	835190.4	818022.6	3	7.9	51.7	0.5	0.000049152	0	0.000049152	0
AEP 14-3	Area	835196.6	818027.5	3	16.2	66.8	0.5	0.000049152	0	0.000049152	0
AEP 14-4	Area	835211.5	818033.9	3	21.2	50.5	0.5	0.000049152	0	0.000049152	0
AEP 15-1	Area	835156.6	818015.7	3	30	82.9	0.5	0	0	0	0
AEP 15-2	Area	835186.4	818019.4	3	5.1	51.3	0.5	0	0	0	0
AEP 16-1	Area	834892.9	817982.2	3	29.9	82.9	0.5	0.000131751	0	0.000131751	0
AEP 16-2	Area	834922.6	817985.9	3	30	82.7	0.5	0.000131751	0	0.000131751	0
AEP 16-3	Area	834952.4	817989.7	3	30	82.7	0.5	0.000131751	0	0.000131751	0
AEP 16-4	Area	834982.2	817993.5	3	29.9	82.7	0.5	0.000131751	0	0.000131751	0
AEP 16-5	Area	835011.9	817997.3	3	30	82.7	0.5	0	0	0	0
AEP 16-6	Area	835041.7	818001.1	3	29.9	82.9	0.5	0	0	0	0
AEP 16-7	Area	835071.4	818004.8	3	30	82.7	0.5	0	0	0	0
AEP 16-8	Area	835101.2	818008.6	3	30	82.7	0.5	0	0	0	0
AEP 16-9	Area	835131.0	818012.4	3	25.8	82.7	0.5	0	0	0	0
AEP 17-1	Area	834545.7	817933.2	3	30	81.6	0.5	0.000132191	0	0.000132191	0
AEP 17-2	Area	834575.4	817937.6	3	30.1	81.2	0.5	0.000132191	0	0.000132191	0
AEP 17-3	Area	834605.1	817942.2	3	30	81.2	0.5	0.000132191	0	0.000132191	0
AEP 17-4	Area	834634.7	817946.8	3	30	81.4	0.5	0.000132191	0	0.000132191	0
AEP 17-5	Area	834664.4	817951.3	3	30	81.2	0.5	0.000132191	0	0.000132191	0
AEP 17-6	Area	834694.0	817955.9	3	30	81.4	0.5	0.000132191	0	0.000132191	0
AEP 17-7	Area	834723.7	817960.4	3	30	82.5	0.5	0.000132191	0	0.000132191	0
AEP 17-8	Area	834753.4	817964.3	3	30	82.7	0.5	0.000132191	0	0.000132191	0
AEP 17-9	Area	834783.2	817968.1	3	29.9	82.7	0.5	0.000132191	0	0.000132191	0
AEP 17-10	Area	834812.9	817971.9	3	30	82.7	0.5	0.000132191	0	0.000132191	0
AEP 17-11	Area	834842.7	817975.7	3	29.9	82.7	0.5	0.000132191	0	0.000132191	0
AEP 17-12	Area	834872.4	817979.5	3	20.7	82.5	0.5	0.000132191	0	0.000132191	0

Note:

The emission factor is referred to Appendix 3.6 of the latest EIA of WKCD.

Appendix 3.8 - Input Parameters for WKCD of Year 2015 for Hourly and Daily Emission

ID	Source Type	Coordinates of Centroid		Dimension (m)		Width /Angle	Height (m)	Emission Rate (g/s or g/s/m <sup>2</sup> )			
		X	Y	Width	Length			Heavy Construction	Wind Erosion	Working Hour	Non-Working Hour
E1	Area	834297.5	818332.8	145	23.5	55	0	0.00000060	0.00000008	0.00000068	0.00000008
E2	Area	834132.0	818269.2	240.1	5.5	0	0	0.00000060	0.00000008	0.00000068	0.00000008
E3	Area	834015.5	818232.9	67	11.5	-90	0	0.00000060	0.00000008	0.00000068	0.00000008
E4	Area	833988.0	818173.2	68	11	53.6	0	0.00000060	0.00000008	0.00000068	0.00000008
E5	Area	833961.1	818108.0	69	22.5	-89.9	0	0.00000060	0.00000008	0.00000068	0.00000008
E6	Area	833956.4	818048.8	49.5	12.9	-89.9	0	0.00000060	0.00000008	0.00000068	0.00000008
E7	Area	833987.7	817947.4	27.6	27.6	-89.9	0	0.00000060	0.00000008	0.00000068	0.00000008
E8	Area	833959.6	817882.0	64	18.7	-89.9	0	0.00000060	0.00000008	0.00000068	0.00000008
E9	Area	833959.6	817882.0	64	18.7	-89.9	0	0.00000060	0.00000008	0.00000068	0.00000008
E10	Area	833981.7	817816.7	74	14	-51.7	0	0.00000060	0.00000008	0.00000068	0.00000008
E11	Area	834456.1	818201.7	20	19	49	0	0.000019879	0.00002696	0.000022575	0.00002696
E12	Area	834427.0	818148.3	69	10	44.2	0	0.00001014	0.00000137	0.00001151	0.00000137
E13	Area	834473.0	818158.6	55.6	33.5	-86	0	0.00001014	0.00000137	0.00001151	0.00000137
E14	Area	834452.9	818097.6	65.3	43.7	4	0	0.00001014	0.00000137	0.00001151	0.00000137
E15	Area	834407.8	818081.8	26.8	18.5	4	0	0.00001014	0.00000137	0.00001151	0.00000137
E16	Area	834383.7	818076.9	21.9	12	4	0	0.00001014	0.00000137	0.00001151	0.00000137
E17	Area	834424.3	818065.7	101.3	16	4	0	0.00001014	0.00000137	0.00001151	0.00000137
E18	Area	834338.1	818041.4	36	33	0	0	0.00000060	0.00000008	0.00000068	0.00000008
E19	Area	834306.1	818002.9	97	41	0	0	0.00000060	0.00000008	0.00000068	0.00000008
E20	Area	834292.5	817952.9	124.1	59	0	0	0.00000060	0.00000008	0.00000068	0.00000008
E21	Area	834450.0	818050.2	22.7	18.5	4	0	0.00001014	0.00000137	0.00001151	0.00000137
E22	Area	834429.7	818034.5	47	19.9	-86	0	0.00001014	0.00000137	0.00001151	0.00000137
E23	Area	834398.7	818019.8	72	43.9	-86	0	0.00001014	0.00000137	0.00001151	0.00000137
E24	Area	834391.1	817969.1	28	21.6	-86	0	0.00001014	0.00000137	0.00001151	0.00000137
E25	Area	834515.6	818141.9	49.1	45	4	0	0.00001014	0.00000137	0.00001151	0.00000137
E26	Area	834565.3	818140.7	50	35.6	4	0	0.00000895	0.00000121	0.00001016	0.00000121
E27	Area	834458.0	818026.4	218.2	10.9	55.4	0	0.00001014	0.00000137	0.00001151	0.00000137
E28	Area	834523.6	818120.2	44.8	33.5	0	0	0.00000895	0.00000121	0.00001016	0.00000121
E29	Area	834472.5	818120.2	52.2	28.2	0	0	0.00001014	0.00000137	0.00001151	0.00000137
E30	Area	834440.7	817947.4	41.2	22.3	4	0	0.00000895	0.00000121	0.00001016	0.00000121
E31	Area	834541.7	818055.0	217.1	8.7	51.5	0	0.00000895	0.00000121	0.00001016	0.00000121
E32	Area	834561.7	818044.3	28.7	21.8	4	0	0.00000895	0.00000121	0.00001016	0.00000121
E33	Area	834553.4	818019.8	48.7	26	4	0	0.00000895	0.00000121	0.00001016	0.00000121
E34	Area	834543.6	817989.0	72.5	34	4	0	0.00000895	0.00000121	0.00001016	0.00000121
E35	Area	834597.0	817961.4	272.5	28.5	4	0	0.00000895	0.00000121	0.00001016	0.00000121
E36	Area	834442.2	817920.8	173.5	31	4	0	0.00000060	0.00000008	0.00000068	0.00000008
E37	Area	834442.5	817890.9	82.5	28.7	4	0	0.00000060	0.00000008	0.00000068	0.00000008
E38	Area	834348.8	817811.0	165	24.4	48.8	0	0.00000060	0.00000008	0.00000068	0.00000008
E39	Area	834665.2	818027.5	93.8	72.5	-86	0	0.00000895	0.00000121	0.00001016	0.00000121
E40	Area	834611.7	817938.0	167.1	20.3	4	0	0.00000060	0.00000008	0.00000068	0.00000008
E41	Area	834765.4	818128.2	61.1	25.5	-86	0	0.00000895	0.00000121	0.00001016	0.00000121
E42	Area	834841.0	818083.8	170.1	38	4	0	0.00000895	0.00000121	0.00001016	0.00000121
E43	Area	834800.9	817974.7	136.2	14.1	4	0	0.00000895	0.00000121	0.00001016	0.00000121
E44	Area	834786.6	817954.4	183.4	16.6	6.6	0	0.00000060	0.00000008	0.00000068	0.00000008
E45	Area	834827.3	818160.7	102.5	4.9	4	0	0.00000895	0.00000121	0.00001016	0.00000121
E46	Area	834908.5	818135.7	56.3	28.3	-86	0	0.00000895	0.00000121	0.00001016	0.00000121
E47	Area	834898.0	818024.8	87.7	64.6	-86	0	0.00000895	0.00000121	0.00001016	0.00000121
E48	Area	834940.1	817976.2	125.8	16.5	10.2	0	0.00000060	0.00000008	0.00000068	0.00000008
E49	Area	834927.0	818172.2	97.9	14	4	0	0.00000895	0.00000121	0.00001016	0.00000121
E50	Area	834975.0	818017.1	47.9	46.5	4	0	0.00000895	0.00000121	0.00001016	0.00000121
E51	Area	834993.8	818120.3	125.7	28.1	-86	0	0.00001292	0.00000175	0.00001467	0.00000175
E52	Area	835072.9	818173.1	137.1	30.5	3.6	0	0.00001292	0.00000175	0.00001467	0.00000175
E53	Area	835076.9	818114.6	137.1	86.2	4	0	0.00001292	0.00000175	0.00001467	0.00000175
E54	Area	835061.2	818052.1	97	36	4	0	0.00001292	0.00000175	0.00001467	0.00000175
E55	Area	835161.6	818126.8	115	33.4	-86	0	0.00001292	0.00000175	0.00001467	0.00000175
E56	Area	835130.1	818002.1	258.8	19.6	7	0	0.00000060	0.00000008	0.00000068	0.00000008
E57	Area	835196.1	818084.1	81.1	29.6	-86	0	0.00001292	0.00000175	0.00001467	0.00000175
E58	Area	835215.2	818134.0	121.9	15.3	-86	0	0.00001292	0.00000175	0.00001467	0.00000175
E59	Area	835223.1	818049.3	48	11.3	-86	0	0.00001292	0.00000175	0.00001467	0.00000175
E60	Area	835267.8	818146.6	107.9	91.6	-86	0	0.00000159	0.00000022	0.00000181	0.00000022
E61	Area	834200.5	817800.9	72	65	90	0	0.00000060	0.00000008	0.00000068	0.00000008
EB1	Area	834306.9	818306.0	22.6	15.7	-35	0	0.000019879	0.00002696	0.000022575	0.00002696
EB2	Area	834430.0	818240.2	19.1	14	-35.5	0	0.000019879	0.00002696	0.000022575	0.00002696
EB3	Area	834488.0	818525.7	14.4	12	-22.4	0	0.000019879	0.00002696	0.000022575	0.00002696
EB4	Area	835360.4	818024.9	33.2	16.2	5	0	0.000019879	0.00002696	0.000022575	0.00002696
EB5	Area	834573.8	818490.4	32.8	11.9	-22.4	0	0.000019879	0.00002696	0.000022575	0.00002696
EP1	Point	835199.6	818095.5	0	0	0	13	0.016666667	0	0.016666667	0
EP2	Point	835197.6	818087.0	0	0	0	13	0.016666667	0	0.016666667	0
EP3	Point	835198.7	818094.0	0	0	0	13	0.00022984	0	0.00022984	0
EP4	Point	835196.5	818085.7	0	0	0	13	0.00022984	0	0.00022984	0
EP5	Point	835205.4	818088.9	0	0	0	20	0.010833334	0	0.010833334	0
EP6	Point	835207.0	818095.3	0	0	0	20	0.010833334	0	0.010833334	0
EP7	Point	835194.8	818092.4	0	0	0	20	0.010833334	0	0.010833334	0
EP8	Point	835205.8	818083.0	0	0	0	20	0.010833334	0	0.010833334	0

EP9	Point	835122.6	818097.6	0	0	0	4	0.001635902	0	0.001635902	0
EP10	Point	834584.4	817939.9	0	0	0	7	0.001635902	0	0.001635902	0
EP11-1	Area	834978.3	818020.7	3	30	12.7	0.5	0.000163385	0	0.000163385	0
EP11-2	Area	835007.6	818027.3	3	30	12.7	0.5	0.000163385	0	0.000163385	0
EP11-3	Area	835032.4	818033.9	3	20.8	12.7	0.5	0.000163385	0	0.000163385	0
EP11-4	Area	835050.1	818040.9	3	30	7.3	0.5	0.000163385	0	0.000163385	0
EP11-5	Area	835079.9	818044.7	3	30	7.3	0.5	0.000163385	0	0.000163385	0
EP11-6	Area	835109.6	818048.5	3	30	7.3	0.5	0.000163385	0	0.000163385	0
EP11-7	Area	835139.4	818052.3	3	30	7.3	0.5	0.000163385	0	0.000163385	0
EP11-8	Area	835169.2	818056.1	3	30	7.3	0.5	0.000163385	0	0.000163385	0
EP11-9	Area	835186.0	818066.7	3	30	8.2	0.5	0.000163385	0	0.000163385	0
EP11-10	Area	835219.2	818062.5	3	9.1	8.2	0.5	0.000163385	0	0.000163385	0
EP11-11	Area	835239.5	818023.8	3	20	75.6	0.5	0.000163385	0	0.000163385	0
EP11-12	Area	835232.0	818033.9	3	30	96.1	0.5	0.000163385	0	0.000163385	0
EP11-13	Area	835229.6	818063.7	3	21.7	96.1	0.5	0.000163385	0	0.000163385	0
EP11-14	Area	835228.9	818089.7	3	8.1	86.3	0.5	0.000163385	0	0.000163385	0
EP11-15	Area	835244.5	818102.7	3	30	75.2	0.5	0.000163385	0	0.000163385	0
EP11-16	Area	835241.5	818131.7	3	8.2	75.2	0.5	0.000163385	0	0.000163385	0
EP12-1	Area	834909.9	818016.6	3	30	6	0.5	0.00014248	0	0.00014248	0
EP12-2	Area	834939.8	818019.7	3	30	6	0.5	0.00014248	0	0.00014248	0
EP12-3	Area	834951.0	818024.2	3	8.4	3	0.5	0.00014248	0	0.00014248	0
EP12-4	Area	834765.2	817997.8	3	30	7.8	0.5	0.00014248	0	0.00014248	0
EP12-5	Area	834795.0	818001.9	3	30	7.8	0.5	0.00014248	0	0.00014248	0
EP12-6	Area	834824.7	818005.9	3	30	7.8	0.5	0.00014248	0	0.00014248	0
EP12-7	Area	834854.4	818010.0	3	30	7.8	0.5	0.00014248	0	0.00014248	0
EP12-8	Area	834895.8	818015.0	3	30	5.7	0.5	0.00014248	0	0.00014248	0
EP12-9	Area	834649.8	817986.1	3	30	5.7	0.5	0.00014248	0	0.00014248	0
EP12-10	Area	834679.7	817989.0	3	30	5.7	0.5	0.00014248	0	0.00014248	0
EP12-11	Area	834709.5	817992.0	3	30	5.7	0.5	0.00014248	0	0.00014248	0
EP12-12	Area	834739.4	817995.0	3	30	5.7	0.5	0.00014248	0	0.00014248	0
EP12-13	Area	834759.9	817997.9	3	7.8	5.7	0.5	0.00014248	0	0.00014248	0
EP12-14	Area	834600.6	817981.2	3	30	5.7	0.5	0.00014248	0	0.00014248	0
EP12-15	Area	834626.0	817984.2	3	19.4	5.7	0.5	0.00014248	0	0.00014248	0
EP13-1	Area	834897.8	817976.4	3	30	89.2	0.5	0.000063499	0	0.000063499	0
EP13-2	Area	834898.2	818006.4	3	30	89.2	0.5	0.000063499	0	0.000063499	0
EP13-3	Area	834898.6	818036.4	3	30	89.2	0.5	0.000063499	0	0.000063499	0
EP13-4	Area	834899.0	818066.4	3	30	89.2	0.5	0.000063499	0	0.000063499	0
EP13-5	Area	834899.4	818096.4	3	30	89.2	0.5	0.000063499	0	0.000063499	0
EP13-6	Area	834897.9	818126.4	3	18.6	89.2	0.5	0.000063499	0	0.000063499	0
EP14-1	Area	835223.4	818149.1	3	19.1	11.6	0.5	0.000008362	0	0.000008362	0
EP14-2	Area	835210.1	818188.3	3	21	71.7	0.5	0.000008362	0	0.000008362	0
EP14-3	Area	835204.0	818136.5	3	19.3	13.9	0.5	0.000008362	0	0.000008362	0
EP15-1	Area	835212.7	818158.4	3	19.3	1.8	0.5	0.000039954	0	0.000039954	0
EP15-2	Area	835220.7	818146.6	3	19.6	24.3	0.5	0.000039954	0	0.000039954	0
EP16-1	Area	835211.8	818147.7	3	30	13.8	0.5	0.000017038	0	0.000017038	0
EP16-2	Area	835205.7	818187.3	3	25.9	77.2	0.5	0.000017038	0	0.000017038	0
EP17-1	Area	835213.0	818125.9	3	19.9	19.8	0.5	0.00000852	0	0.00000852	0
EP17-2	Area	835195.8	818120.1	3	23	15.3	0.5	0.00000852	0	0.00000852	0
EP18-1	Area	834979.0	818017.8	3	30	12.7	0.5	0.00006122	0	0.00006122	0
EP18-2	Area	835008.3	818024.4	3	30	12.7	0.5	0.00006122	0	0.00006122	0
EP18-3	Area	835032.8	818031.0	3	20.5	12.7	0.5	0.00006122	0	0.00006122	0
EP18-4	Area	835050.5	818037.9	3	30	7.3	0.5	0.00006122	0	0.00006122	0
EP18-5	Area	835080.3	818041.7	3	30	7.3	0.5	0.00006122	0	0.00006122	0
EP18-6	Area	835110.0	818045.5	3	30	7.3	0.5	0.00006122	0	0.00006122	0
EP18-7	Area	835139.8	818049.3	3	30	7.3	0.5	0.00006122	0	0.00006122	0
EP18-8	Area	835169.5	818053.1	3	30	7.3	0.5	0.00006122	0	0.00006122	0
EP18-9	Area	835185.0	818063.9	3	30	8.3	0.5	0.00006122	0	0.00006122	0
EP18-10	Area	835218.7	818059.5	3	11	8.3	0.5	0.00006122	0	0.00006122	0
EP18-11	Area	835243.4	818020.4	3	23.2	75.6	0.5	0.00006122	0	0.00006122	0
EP18-12	Area	835235.0	818033.7	3	30	96.1	0.5	0.00006122	0	0.00006122	0
EP18-13	Area	835232.5	818063.5	3	22.2	96.1	0.5	0.00006122	0	0.00006122	0
EP18-14	Area	835232.6	818089.9	3	7	86.5	0.5	0.00006122	0	0.00006122	0
EP18-15	Area	834910.3	818013.6	3	30	6	0.5	0.00006122	0	0.00006122	0
EP18-16	Area	834940.1	818016.7	3	30	6	0.5	0.00006122	0	0.00006122	0
EP18-17	Area	834959.7	818019.9	3	8.7	6	0.5	0.00006122	0	0.00006122	0
EP19-1	Area	834795.6	817994.8	3	30	7.8	0.5	0.000054404	0	0.000054404	0
EP19-2	Area	834795.3	817998.9	3	30	7.8	0.5	0.000054404	0	0.000054404	0
EP19-3	Area	834825.0	818003.0	3	30	7.8	0.5	0.000054404	0	0.000054404	0
EP19-4	Area	834854.8	818007.0	3	30	7.8	0.5	0.000054404	0	0.000054404	0
EP19-5	Area	834884.0	818011.1	3	12.3	7.8	0.5	0.000054404	0	0.000054404	0
EP19-6	Area	834650.1	817983.1	3	30	5.7	0.5	0.000054404	0	0.000054404	0
EP19-7	Area	834680.0	817986.1	3	30	5.7	0.5	0.000054404	0	0.000054404	0
EP19-8	Area	834709.8	817989.0	3	30	5.7	0.5	0.000054404	0	0.000054404	0
EP19-9	Area	834739.7	817992.0	3	30	5.7	0.5	0.000054404	0	0.000054404	0
EP19-10	Area	834760.2	817994.9	3	7.8	5.7	0.5	0.000054404	0	0.000054404	0
EP19-11	Area	834600.9	817978.2	3	30	5.7	0.5	0.000054404	0	0.000054404	0
EP19-12	Area	834626.3	817981.2	3	19.4	5.7	0.5	0.000054404	0	0.000054404	0
EP20-1	Area	834900.8	817976.4	3	30	89.2	0.5	0.000023102	0	0.000023102	0

EP20-2	Area	834901.2	818006.4	3	30	89.2	0.5	0.000023102	0	0.000023102	0
EP20-3	Area	834901.6	818036.4	3	30	89.2	0.5	0.000023102	0	0.000023102	0
EP20-4	Area	834902.0	818066.4	3	30	89.2	0.5	0.000023102	0	0.000023102	0
EP20-5	Area	834902.4	818096.4	3	30	89.2	0.5	0.000023102	0	0.000023102	0
EP20-6	Area	834900.9	818126.4	3	18.6	89.2	0.5	0.000023102	0	0.000023102	0
EP21-1	Area	835222.1	818158.9	3	20.1	31.8	0.5	0.000002727	0	0.000002727	0
EP21-2	Area	835202.8	818136.3	3	10.2	13.9	0.5	0.000002727	0	0.000002727	0
EP22-1	Area	835212.1	818138.2	3	19.3	35.7	0.5	0.000015247	0	0.000015247	0
EP22-2	Area	835219.6	818178.4	3	22.3	55.1	0.5	0.000015247	0	0.000015247	0
EP23-1	Area	835203.7	818113.6	3	7.8	46.4	0.5	0.000003258	0	0.000003258	0
EP23-2	Area	835212.2	818144.1	3	15.9	8	0.5	0.000003258	0	0.000003258	0
EP23-3	Area	835195.1	818122.7	3	22.9	9.5	0.5	0.000003258	0	0.000003258	0
HR7A3	Line	835002.8	818127.3	835002.8	817987.3	6	0.5	0.000000001	0	0.000000001	0
HR7B	Line	834964.1	817983.2	834895.8	817976	6	0.5	0.000000001	0	0.000000001	0
HR7C	Line	834943.9	818149.5	834941.6	817980.9	6	0.5	0.000000001	0	0.000000001	0
HR8A	Line	834895.8	817976.0	834764.7	817958	6	0.5	0.000000001	0	0.000000001	0
HR8B	Line	834767.7	817958.0	834637.5	817945.4	6	0.5	0.000000001	0	0.000000001	0
HR9	Line	834637.5	817945.4	834588.3	817940.5	6	0.5	0.000000001	0	0.000000001	0
HR10A	Line	834588.3	817940.5	834519.6	817934.4	6	0.5	0.000000001	0	0.000000001	0
HR10B	Line	834519.6	817934.4	834425.8	817897.2	6	0.5	0.000000001	0	0.000000001	0
HR10C	Line	834425.8	817897.2	834389.4	817855.7	6	0.5	0.000000001	0	0.000000001	0
HR11	Line	834389.4	817855.7	834313.9	817770	6	0.5	0.000000001	0	0.000000001	0
HR12A	Line	834313.9	817770.0	834289.8	817763.6	6	0.5	0.000000001	0	0.000000001	0
BP4	Point	834640.0	817930.5	0	0	0	0.5	0.00426664	0	0.00426664	0
BP5	Point	834591.9	817924.7	0	0	0	0.5	0.00426664	0	0.00426664	0
BP6	Point	834397.5	817847.6	0	0	0	0.5	0.00426664	0	0.00426664	0
BP7	Point	834328.6	817755.8	0	0	0	0.5	0.00426664	0	0.00426664	0

Note:

The percentage of active area of WKCD has been included in the emission factor.

Appendix 3.8 - Input Parameters for WKCD of Year 2015 for Annual Emission

ID	Source Type	Coordinates of Centroid		Dimension (m)		Width /Angle	Height (m)	Emission Rate (g/s or g/s/m^2)			
		X	Y	Width	Length			Heavy Construction	Wind Erosion	Working Hour	Non-Working Hour
E1	Area	834297.5	818332.8	145	23.5	55	0	0.00000006	0.00000009	0.00000069	0.00000009
E2	Area	834132.0	818269.2	240.1	5.5	0	0	0.00000006	0.00000009	0.00000069	0.00000009
E3	Area	834015.5	818232.9	67	11.5	-90	0	0.00000006	0.00000009	0.00000069	0.00000009
E4	Area	833988.0	818173.2	68	11	53.6	0	0.00000006	0.00000009	0.00000069	0.00000009
E5	Area	833961.1	818108.0	69	22.5	-89.9	0	0.00000006	0.00000009	0.00000069	0.00000009
E6	Area	833956.4	818048.8	49.5	12.9	-89.9	0	0.00000006	0.00000009	0.00000069	0.00000009
E7	Area	833987.7	817947.4	27.6	27.6	-89.9	0	0.00000006	0.00000009	0.00000069	0.00000009
E8	Area	833959.6	817882.0	64	18.7	-89.9	0	0.00000006	0.00000009	0.00000069	0.00000009
E9	Area	833959.6	817882.0	64	18.7	-89.9	0	0.00000006	0.00000009	0.00000069	0.00000009
E10	Area	833981.7	817816.7	74	14	-51.7	0	0.00000006	0.00000009	0.00000069	0.00000009
E11	Area	834456.1	818201.7	20	19	49	0	0.000019879	0.00002696	0.000022575	0.00002696
E12	Area	834427.0	818148.3	69	10	44.2	0	0.00000398	0.00000054	0.00000452	0.00000054
E13	Area	834473.0	818158.6	55.6	33.5	-86	0	0.00000398	0.00000054	0.00000452	0.00000054
E14	Area	834452.9	818097.6	65.3	43.7	4	0	0.00000398	0.00000054	0.00000452	0.00000054
E15	Area	834407.8	818081.8	26.8	18.5	4	0	0.00000398	0.00000054	0.00000452	0.00000054
E16	Area	834383.7	818076.9	21.9	12	4	0	0.00000398	0.00000054	0.00000452	0.00000054
E17	Area	834424.3	818065.7	101.3	16	4	0	0.00000398	0.00000054	0.00000452	0.00000054
E18	Area	834338.1	818041.4	36	33	0	0	0.00000006	0.00000009	0.00000069	0.00000009
E19	Area	834306.1	818002.9	97	41	0	0	0.00000006	0.00000009	0.00000069	0.00000009
E20	Area	834292.5	817952.9	124.1	59	0	0	0.00000006	0.00000009	0.00000069	0.00000009
E21	Area	834450.0	818050.2	22.7	18.5	4	0	0.00000398	0.00000054	0.00000452	0.00000054
E22	Area	834429.7	818034.5	47	19.9	-86	0	0.00000398	0.00000054	0.00000452	0.00000054
E23	Area	834398.7	818019.8	72	43.9	-86	0	0.00000398	0.00000054	0.00000452	0.00000054
E24	Area	834391.1	817969.1	28	21.6	-86	0	0.00000398	0.00000054	0.00000452	0.00000054
E25	Area	834515.6	818141.9	49.1	45	4	0	0.00000398	0.00000054	0.00000452	0.00000054
E26	Area	834565.3	818140.7	50	35.6	4	0	0.00000796	0.00000108	0.00000904	0.00000108
E27	Area	834458.0	818026.4	218.2	10.9	55.4	0	0.00000398	0.00000054	0.00000452	0.00000054
E28	Area	834523.6	818120.2	44.8	33.5	0	0	0.00000796	0.00000108	0.00000904	0.00000108
E29	Area	834472.5	818120.2	52.2	28.2	0	0	0.00000398	0.00000054	0.00000452	0.00000054
E30	Area	834440.7	817947.4	41.2	22.3	4	0	0.00000796	0.00000108	0.00000904	0.00000108
E31	Area	834541.7	818055.0	217.1	8.7	51.5	0	0.00000796	0.00000108	0.00000904	0.00000108
E32	Area	834561.7	818044.3	28.7	21.8	4	0	0.00000796	0.00000108	0.00000904	0.00000108
E33	Area	834553.4	818019.8	48.7	26	4	0	0.00000796	0.00000108	0.00000904	0.00000108
E34	Area	834543.6	817989.0	72.5	34	4	0	0.00000796	0.00000108	0.00000904	0.00000108
E35	Area	834597.0	817961.4	272.5	28.5	4	0	0.00000796	0.00000108	0.00000904	0.00000108
E36	Area	834442.2	817920.8	173.5	31	4	0	0.00000006	0.00000009	0.00000069	0.00000009
E37	Area	834442.5	817890.9	82.5	28.7	4	0	0.00000006	0.00000009	0.00000069	0.00000009
E38	Area	834348.8	817811.0	165	24.4	48.8	0	0.00000006	0.00000009	0.00000069	0.00000009
E39	Area	834665.2	818027.5	93.8	72.5	-86	0	0.00000796	0.00000108	0.00000904	0.00000108
E40	Area	834611.7	817938.0	167.1	20.3	4	0	0.00000006	0.00000009	0.00000069	0.00000009
E41	Area	834765.4	818128.2	61.1	25.5	-86	0	0.00000796	0.00000108	0.00000904	0.00000108
E42	Area	834841.0	818083.8	170.1	38	4	0	0.00000796	0.00000108	0.00000904	0.00000108
E43	Area	834800.9	817974.7	136.2	14.1	4	0	0.00000796	0.00000108	0.00000904	0.00000108
E44	Area	834786.6	817954.4	183.4	16.6	6.6	0	0.00000006	0.00000009	0.00000069	0.00000009
E45	Area	834827.3	818160.7	102.5	4.9	4	0	0.00000796	0.00000108	0.00000904	0.00000108
E46	Area	834908.5	818135.7	56.3	28.3	-86	0	0.00000796	0.00000108	0.00000904	0.00000108
E47	Area	834898.0	818024.8	87.7	64.6	-86	0	0.00000796	0.00000108	0.00000904	0.00000108
E48	Area	834940.1	817976.2	125.8	16.5	10.2	0	0.00000006	0.00000009	0.00000069	0.00000009
E49	Area	834927.0	818172.2	97.9	14	4	0	0.00000796	0.00000108	0.00000904	0.00000108
E50	Area	834975.0	818017.1	47.9	46.5	4	0	0.00000796	0.00000108	0.00000904	0.00000108
E51	Area	834993.8	818120.3	125.7	28.1	-86	0	0.00001193	0.00000162	0.00001355	0.00000162
E52	Area	835072.9	818173.1	137.1	30.5	3.6	0	0.00001193	0.00000162	0.00001355	0.00000162
E53	Area	835076.9	818114.6	137.1	86.2	4	0	0.00001193	0.00000162	0.00001355	0.00000162
E54	Area	835061.2	818052.1	97	36	4	0	0.00001193	0.00000162	0.00001355	0.00000162
E55	Area	835161.6	818126.8	115	33.4	-86	0	0.00001193	0.00000162	0.00001355	0.00000162
E56	Area	835130.1	818002.1	258.8	19.6	7	0	0.00000006	0.00000009	0.00000069	0.00000009
E57	Area	835196.1	818084.1	81.1	29.6	-86	0	0.00001193	0.00000162	0.00001355	0.00000162
E58	Area	835215.2	818134.0	121.9	15.3	-86	0	0.00001193	0.00000162	0.00001355	0.00000162
E59	Area	835223.1	818049.3	48	11.3	-86	0	0.00001193	0.00000162	0.00001355	0.00000162
E60	Area	835267.8	818146.6	107.9	91.6	-86	0	0.00000199	0.00000027	0.00000226	0.00000027
E61	Area	834200.5	817800.9	72	65	90	0	0.00000006	0.00000009	0.00000069	0.00000009
EB1	Area	834306.9	818306.0	22.6	15.7	-35	0	0.000019879	0.00002696	0.000022575	0.00002696
EB2	Area	834430.0	818240.2	19.1	14	-35.5	0	0.000019879	0.00002696	0.000022575	0.00002696
EB3	Area	834488.0	818525.7	14.4	12	-22.4	0	0.000019879	0.00002696	0.000022575	0.00002696
EB4	Area	835360.4	818024.9	33.2	16.2	5	0	0.000019879	0.00002696	0.000022575	0.00002696
EB5	Area	834573.8	818490.4	32.8	11.9	-22.4	0	0.000019879	0.00002696	0.000022575	0.00002696
EP1	Point	835199.6	818095.5	0	0	0	13	0.016666667	0	0.016666667	0
EP2	Point	835197.6	818087.0	0	0	0	13	0.016666667	0	0.016666667	0
EP3	Point	835198.7	818094.0	0	0	0	13	0.00022984	0	0.00022984	0
EP4	Point	835196.5	818085.7	0	0	0	13	0.00022984	0	0.00022984	0
EP5	Point	835205.4	818088.9	0	0	0	20	0.010833334	0	0.010833334	0
EP6	Point	835207.0	818095.3	0	0	0	20	0.010833334	0	0.010833334	0
EP7	Point	835194.8	818092.4	0	0	0	20	0.010833334	0	0.010833334	0
EP8	Point	835205.8	818083.0	0	0	0	20	0.010833334	0	0.010833334	0

EP9	Point	835122.6	818097.6	0	0	0	4	0.001635902	0	0.001635902	0
EP10	Point	834584.4	817939.9	0	0	0	7	0.001635902	0	0.001635902	0
EP11-1	Area	834978.3	818020.7	3	30	12.7	0.5	0.000163385	0	0.000163385	0
EP11-2	Area	835007.6	818027.3	3	30	12.7	0.5	0.000163385	0	0.000163385	0
EP11-3	Area	835032.4	818033.9	3	20.8	12.7	0.5	0.000163385	0	0.000163385	0
EP11-4	Area	835050.1	818040.9	3	30	7.3	0.5	0.000163385	0	0.000163385	0
EP11-5	Area	835079.9	818044.7	3	30	7.3	0.5	0.000163385	0	0.000163385	0
EP11-6	Area	835109.6	818048.5	3	30	7.3	0.5	0.000163385	0	0.000163385	0
EP11-7	Area	835139.4	818052.3	3	30	7.3	0.5	0.000163385	0	0.000163385	0
EP11-8	Area	835169.2	818056.1	3	30	7.3	0.5	0.000163385	0	0.000163385	0
EP11-9	Area	835186.0	818066.7	3	30	8.2	0.5	0.000163385	0	0.000163385	0
EP11-10	Area	835219.2	818062.5	3	9.1	8.2	0.5	0.000163385	0	0.000163385	0
EP11-11	Area	835239.5	818023.8	3	20	75.6	0.5	0.000163385	0	0.000163385	0
EP11-12	Area	835232.0	818033.9	3	30	96.1	0.5	0.000163385	0	0.000163385	0
EP11-13	Area	835229.6	818063.7	3	21.7	96.1	0.5	0.000163385	0	0.000163385	0
EP11-14	Area	835228.9	818089.7	3	8.1	86.3	0.5	0.000163385	0	0.000163385	0
EP11-15	Area	835244.5	818102.7	3	30	75.2	0.5	0.000163385	0	0.000163385	0
EP11-16	Area	835241.5	818131.7	3	8.2	75.2	0.5	0.000163385	0	0.000163385	0
EP12-1	Area	834909.9	818016.6	3	30	6	0.5	0.00014248	0	0.00014248	0
EP12-2	Area	834939.8	818019.7	3	30	6	0.5	0.00014248	0	0.00014248	0
EP12-3	Area	834951.0	818024.2	3	8.4	3	0.5	0.00014248	0	0.00014248	0
EP12-4	Area	834765.2	817997.8	3	30	7.8	0.5	0.00014248	0	0.00014248	0
EP12-5	Area	834795.0	818001.9	3	30	7.8	0.5	0.00014248	0	0.00014248	0
EP12-6	Area	834824.7	818005.9	3	30	7.8	0.5	0.00014248	0	0.00014248	0
EP12-7	Area	834854.4	818010.0	3	30	7.8	0.5	0.00014248	0	0.00014248	0
EP12-8	Area	834895.8	818015.0	3	30	5.7	0.5	0.00014248	0	0.00014248	0
EP12-9	Area	834649.8	817986.1	3	30	5.7	0.5	0.00014248	0	0.00014248	0
EP12-10	Area	834679.7	817989.0	3	30	5.7	0.5	0.00014248	0	0.00014248	0
EP12-11	Area	834709.5	817992.0	3	30	5.7	0.5	0.00014248	0	0.00014248	0
EP12-12	Area	834739.4	817995.0	3	30	5.7	0.5	0.00014248	0	0.00014248	0
EP12-13	Area	834759.9	817997.9	3	7.8	5.7	0.5	0.00014248	0	0.00014248	0
EP12-14	Area	834600.6	817981.2	3	30	5.7	0.5	0.00014248	0	0.00014248	0
EP12-15	Area	834626.0	817984.2	3	19.4	5.7	0.5	0.00014248	0	0.00014248	0
EP13-1	Area	834897.8	817976.4	3	30	89.2	0.5	0.000063499	0	0.000063499	0
EP13-2	Area	834898.2	818006.4	3	30	89.2	0.5	0.000063499	0	0.000063499	0
EP13-3	Area	834898.6	818036.4	3	30	89.2	0.5	0.000063499	0	0.000063499	0
EP13-4	Area	834899.0	818066.4	3	30	89.2	0.5	0.000063499	0	0.000063499	0
EP13-5	Area	834899.4	818096.4	3	30	89.2	0.5	0.000063499	0	0.000063499	0
EP13-6	Area	834897.9	818126.4	3	18.6	89.2	0.5	0.000063499	0	0.000063499	0
EP14-1	Area	835223.4	818149.1	3	19.1	11.6	0.5	0.000008362	0	0.000008362	0
EP14-2	Area	835210.1	818188.3	3	21	71.7	0.5	0.000008362	0	0.000008362	0
EP14-3	Area	835204.0	818136.5	3	19.3	13.9	0.5	0.000008362	0	0.000008362	0
EP15-1	Area	835212.7	818158.4	3	19.3	1.8	0.5	0.000039954	0	0.000039954	0
EP15-2	Area	835220.7	818146.6	3	19.6	24.3	0.5	0.000039954	0	0.000039954	0
EP16-1	Area	835211.8	818147.7	3	30	13.8	0.5	0.000017038	0	0.000017038	0
EP16-2	Area	835205.7	818187.3	3	25.9	77.2	0.5	0.000017038	0	0.000017038	0
EP17-1	Area	835213.0	818125.9	3	19.9	19.8	0.5	0.00000852	0	0.00000852	0
EP17-2	Area	835195.8	818120.1	3	23	15.3	0.5	0.00000852	0	0.00000852	0
EP18-1	Area	834979.0	818017.8	3	30	12.7	0.5	0.00006122	0	0.00006122	0
EP18-2	Area	835008.3	818024.4	3	30	12.7	0.5	0.00006122	0	0.00006122	0
EP18-3	Area	835032.8	818031.0	3	20.5	12.7	0.5	0.00006122	0	0.00006122	0
EP18-4	Area	835050.5	818037.9	3	30	7.3	0.5	0.00006122	0	0.00006122	0
EP18-5	Area	835080.3	818041.7	3	30	7.3	0.5	0.00006122	0	0.00006122	0
EP18-6	Area	835110.0	818045.5	3	30	7.3	0.5	0.00006122	0	0.00006122	0
EP18-7	Area	835139.8	818049.3	3	30	7.3	0.5	0.00006122	0	0.00006122	0
EP18-8	Area	835169.5	818053.1	3	30	7.3	0.5	0.00006122	0	0.00006122	0
EP18-9	Area	835185.0	818063.9	3	30	8.3	0.5	0.00006122	0	0.00006122	0
EP18-10	Area	835218.7	818059.5	3	11	8.3	0.5	0.00006122	0	0.00006122	0
EP18-11	Area	835243.4	818020.4	3	23.2	75.6	0.5	0.00006122	0	0.00006122	0
EP18-12	Area	835235.0	818033.7	3	30	96.1	0.5	0.00006122	0	0.00006122	0
EP18-13	Area	835232.5	818063.5	3	22.2	96.1	0.5	0.00006122	0	0.00006122	0
EP18-14	Area	835232.6	818089.9	3	7	86.5	0.5	0.00006122	0	0.00006122	0
EP18-15	Area	834910.3	818013.6	3	30	6	0.5	0.00006122	0	0.00006122	0
EP18-16	Area	834940.1	818016.7	3	30	6	0.5	0.00006122	0	0.00006122	0
EP18-17	Area	834959.7	818019.9	3	8.7	6	0.5	0.00006122	0	0.00006122	0
EP19-1	Area	834795.6	817994.8	3	30	7.8	0.5	0.000054404	0	0.000054404	0
EP19-2	Area	834795.3	817998.9	3	30	7.8	0.5	0.000054404	0	0.000054404	0
EP19-3	Area	834825.0	818003.0	3	30	7.8	0.5	0.000054404	0	0.000054404	0
EP19-4	Area	834854.8	818007.0	3	30	7.8	0.5	0.000054404	0	0.000054404	0
EP19-5	Area	834884.0	818011.1	3	12.3	7.8	0.5	0.000054404	0	0.000054404	0
EP19-6	Area	834650.1	817983.1	3	30	5.7	0.5	0.000054404	0	0.000054404	0
EP19-7	Area	834680.0	817986.1	3	30	5.7	0.5	0.000054404	0	0.000054404	0
EP19-8	Area	834709.8	817989.0	3	30	5.7	0.5	0.000054404	0	0.000054404	0
EP19-9	Area	834739.7	817992.0	3	30	5.7	0.5	0.000054404	0	0.000054404	0
EP19-10	Area	834760.2	817994.9	3	7.8	5.7	0.5	0.000054404	0	0.000054404	0
EP19-11	Area	834600.9	817978.2	3	30	5.7	0.5	0.000054404	0	0.000054404	0
EP19-12	Area	834626.3	817981.2	3	19.4	5.7	0.5	0.000054404	0	0.000054404	0
EP20-1	Area	834900.8	817976.4	3	30	89.2	0.5	0.000023102	0	0.000023102	0

EP20-2	Area	834901.2	818006.4	3	30	89.2	0.5	0.000023102	0	0.000023102	0
EP20-3	Area	834901.6	818036.4	3	30	89.2	0.5	0.000023102	0	0.000023102	0
EP20-4	Area	834902.0	818066.4	3	30	89.2	0.5	0.000023102	0	0.000023102	0
EP20-5	Area	834902.4	818096.4	3	30	89.2	0.5	0.000023102	0	0.000023102	0
EP20-6	Area	834900.9	818126.4	3	18.6	89.2	0.5	0.000023102	0	0.000023102	0
EP21-1	Area	835222.1	818158.9	3	20.1	31.8	0.5	0.000002727	0	0.000002727	0
EP21-2	Area	835202.8	818136.3	3	10.2	13.9	0.5	0.000002727	0	0.000002727	0
EP22-1	Area	835212.1	818138.2	3	19.3	35.7	0.5	0.000015247	0	0.000015247	0
EP22-2	Area	835219.6	818178.4	3	22.3	55.1	0.5	0.000015247	0	0.000015247	0
EP23-1	Area	835203.7	818113.6	3	7.8	46.4	0.5	0.000003258	0	0.000003258	0
EP23-2	Area	835212.2	818144.1	3	15.9	8	0.5	0.000003258	0	0.000003258	0
EP23-3	Area	835195.1	818122.7	3	22.9	9.5	0.5	0.000003258	0	0.000003258	0
HR7A3	Line	835002.8	818127.3	835002.8	817987.3	6	0.5	0.000000001	0	0.000000001	0
HR7B	Line	834964.1	817983.2	834895.8	817976	6	0.5	0.000000001	0	0.000000001	0
HR7C	Line	834943.9	818149.5	834941.6	817980.9	6	0.5	0.000000001	0	0.000000001	0
HR8A	Line	834895.8	817976.0	834764.7	817958	6	0.5	0.000000001	0	0.000000001	0
HR8B	Line	834767.7	817958.0	834637.5	817945.4	6	0.5	0.000000001	0	0.000000001	0
HR9	Line	834637.5	817945.4	834588.3	817940.5	6	0.5	0.000000001	0	0.000000001	0
HR10A	Line	834588.3	817940.5	834519.6	817934.4	6	0.5	0.000000001	0	0.000000001	0
HR10B	Line	834519.6	817934.4	834425.8	817897.2	6	0.5	0.000000001	0	0.000000001	0
HR10C	Line	834425.8	817897.2	834389.4	817855.7	6	0.5	0.000000001	0	0.000000001	0
HR11	Line	834389.4	817855.7	834313.9	817770	6	0.5	0.000000001	0	0.000000001	0
HR12A	Line	834313.9	817770.0	834289.8	817763.6	6	0.5	0.000000001	0	0.000000001	0
BP4	Point	834640.0	817930.5	0	0	0	0.5	0.00426664	0	0.00426664	0
BP5	Point	834591.9	817924.7	0	0	0	0.5	0.00426664	0	0.00426664	0
BP6	Point	834397.5	817847.6	0	0	0	0.5	0.00426664	0	0.00426664	0
BP7	Point	834328.6	817755.8	0	0	0	0.5	0.00426664	0	0.00426664	0

Note:

The emission factor is referred to Appendix 3.6 of the latest EIA of WKCD.



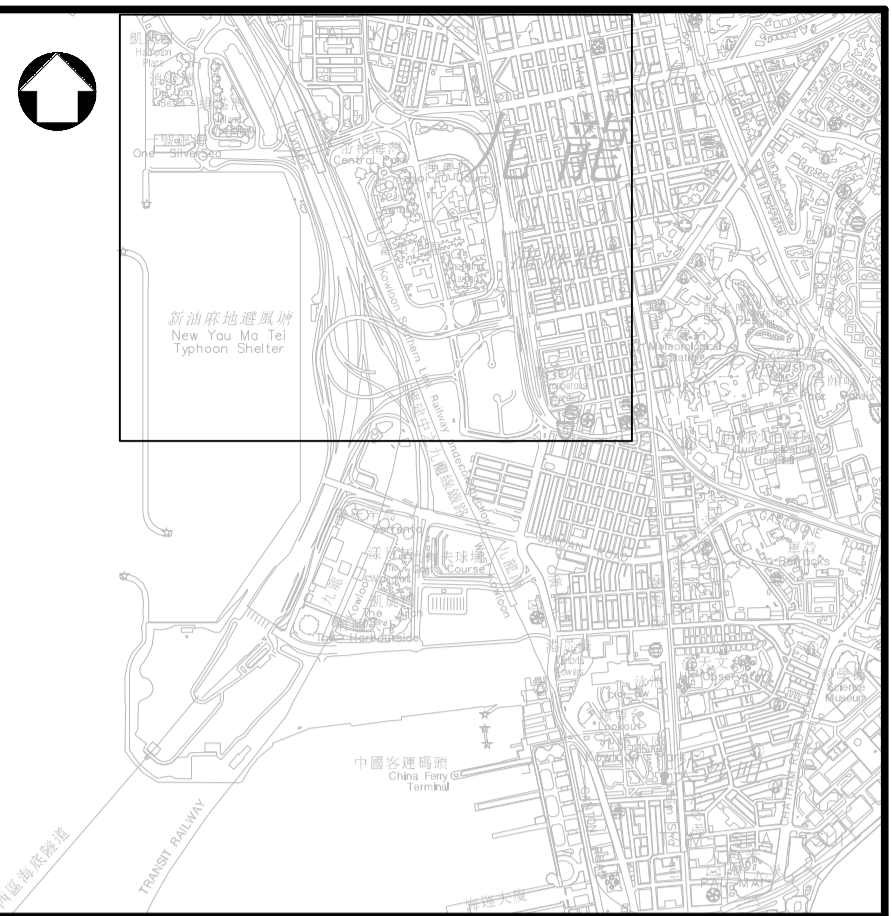
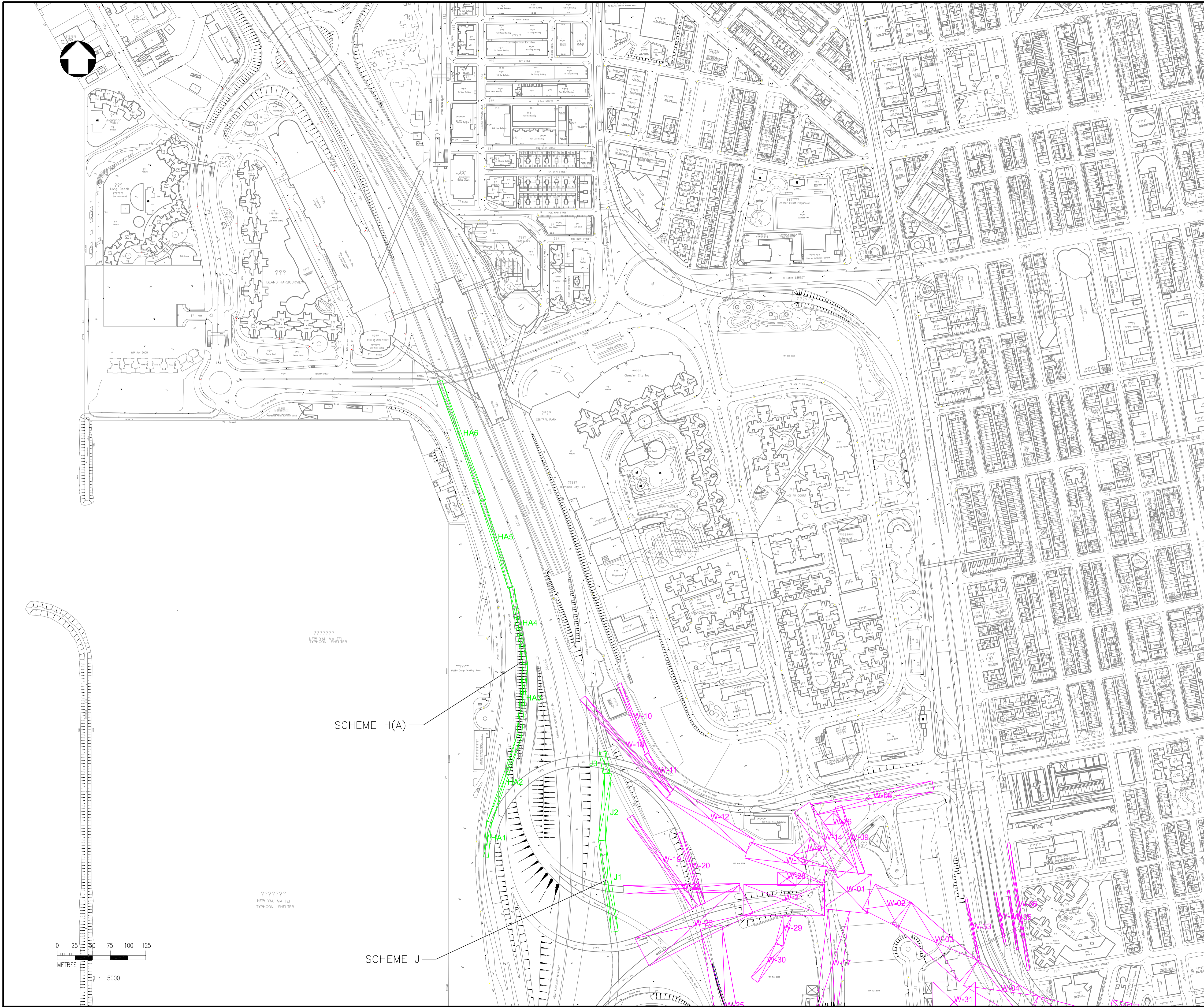
Appendix 3.8 - Input Parameters for CKR of Year 2015

ID	Source Type	Coordinates of Centroid		Dimension (m)		Width /Angle	Height (m)	Hourly and Daily Emission Rate (g/s or g/s/m^2)					Annual Emission Rate (g/s or g/s/m^2)				
		X	Y	Width	Length			Heavy Construction	Wind Erosion for WH	Wind Erosion for non-WH	Working Hour	Non-Working Hour	Heavy Construction	Wind Erosion for WH	Wind Erosion for non-WH	Working Hour	Non-Working Hour
W-01	Area	835083	819095	55	65	84	0.5	0.000019878	0.00000224	0.00002695	0.000020102	0.00002695	0.000001193	0.00000013	0.00000162	0.000001206	0.00000162
W-02	Area	835140	819075	40	57	63	0.5	0.000019878	0.00000224	0.00002695	0.000020102	0.00002695	0.000001193	0.00000013	0.00000162	0.000001206	0.00000162
W-03	Area	835208	819024	40	126	49	0.5	0.000019878	0.00000224	0.00002695	0.000020102	0.00002695	0.000001193	0.00000013	0.00000162	0.000001206	0.00000162
W-04	Area	835301	818955	40	99	60	0.5	0.000019878	0.00000224	0.00002695	0.000020102	0.00002695	0.000001193	0.00000013	0.00000162	0.000001206	0.00000162
W-05	Area	835401	818914	40	109	75	0.5	0.000019878	0.00000224	0.00002695	0.000020102	0.00002695	0.000001193	0.00000013	0.00000162	0.000001206	0.00000162
W-06	Area	835498	818897	40	79	88	0.5	0.000019878	0.00000224	0.00002695	0.000020102	0.00002695	0.000001193	0.00000013	0.00000162	0.000001206	0.00000162
W-07	Area	835585	818906	88	40	12	0.5	0.000019878	0.00000224	0.00002695	0.000020102	0.00002695	0.000001193	0.00000013	0.00000162	0.000001206	0.00000162
W-08	Area	835121	819227	172	16	11	0.5	0.000019878	0.00000224	0.00002695	0.000020102	0.00002695	0.000001193	0.00000013	0.00000162	0.000001206	0.00000162
W-09	Area	835088	819168	10	100	19	0.5	0.000019878	0.00000224	0.00002695	0.000020102	0.00002695	0.000001193	0.00000013	0.00000162	0.000001206	0.00000162
W-10	Area	834782	819339	6	107	22	0.5	0.000019878	0.00000224	0.00002695	0.000020102	0.00002695	0.000001193	0.00000013	0.00000162	0.000001206	0.00000162
W-11	Area	834818	819263	6	64	34	0.5	0.000019878	0.00000224	0.00002695	0.000020102	0.00002695	0.000001193	0.00000013	0.00000162	0.000001206	0.00000162
W-12	Area	834891	819197	22	135	56	0.5	0.000019878	0.00000224	0.00002695	0.000020102	0.00002695	0.000001193	0.00000013	0.00000162	0.000001206	0.00000162
W-13	Area	834998	819136	24	115	72	0.5	0.000019878	0.00000224	0.00002695	0.000020102	0.00002695	0.000001193	0.00000013	0.00000162	0.000001206	0.00000162
W-14	Area	835051	819168	27	111	34	0.5	0.000019878	0.00000224	0.00002695	0.000020102	0.00002695	0.000001193	0.00000013	0.00000162	0.000001206	0.00000162
W-17	Area	835063	818991	156	30	83	0.5	0.000019878	0.00000224	0.00002695	0.000020102	0.00002695	0.000001193	0.00000013	0.00000162	0.000001206	0.00000162
W-18	Area	834771	819299	9	184	41	0.5	0.000019878	0.00000224	0.00002695	0.000020102	0.00002695	0.000001193	0.00000013	0.00000162	0.000001206	0.00000162
W-19	Area	834823	819137	9	156	36	0.5	0.000019878	0.00000224	0.00002695	0.000020102	0.00002695	0.000001193	0.00000013	0.00000162	0.000001206	0.00000162
W-20	Area	834864	819128	7	106	18	0.5	0.000019878	0.00000224	0.00002695	0.000020102	0.00002695	0.000001193	0.00000013	0.00000162	0.000001206	0.00000162
W-21	Area	834995	819083	114	44	0	0.5	0.000019878	0.00000224	0.00002695	0.000020102	0.00002695	0.000001193	0.00000013	0.00000162	0.000001206	0.00000162
W-22	Area	834850	819099	165	12	1	0.5	0.000019878	0.00000224	0.00002695	0.000020102	0.00002695	0.000001193	0.00000013	0.00000162	0.000001206	0.00000162
W-23	Area	834868	819047	165	44	27	0.5	0.000019878	0.00000224	0.00002695	0.000020102	0.00002695	0.000001193	0.00000013	0.00000162	0.000001206	0.00000162
W-25	Area	834912	818931	31	231	10	0.5	0.000019878	0.00000224	0.00002695	0.000020102	0.00002695	0.000001193	0.00000013	0.00000162	0.000001206	0.00000162
W-26	Area	835064	819190	24	22	46	0.5	0.000019878	0.00000224	0.00002695	0.000020102	0.00002695	0.000001193	0.00000013	0.00000162	0.000001206	0.00000162
W-27	Area	835028	819152	34	22	46	0.5	0.000019878	0.00000224	0.00002695	0.000020102	0.00002695	0.000001193	0.00000013	0.00000162	0.000001206	0.00000162
W-28	Area	834999	819113	26	19	0	0.5	0.000019878	0.00000224	0.00002695	0.000020102	0.00002695	0.000001193	0.00000013	0.00000162	0.000001206	0.00000162
W-29	Area	834994	819040	42	12	75	0.5	0.000019878	0.00000224	0.00002695	0.000020102	0.00002695	0.000001193	0.00000013	0.00000162	0.000001206	0.00000162
W-30	Area	834971	818995	61	12	54	0.5	0.000019878	0.00000224	0.00002695	0.000020102	0.00002695	0.000001193	0.00000013	0.00000162	0.000001206	0.00000162
W-31	Area	835235	818939	60	57	0	0.5	0.000019878	0.00000224	0.00002695	0.000020102	0.00002695	0.000001193	0.00000013	0.00000162	0.000001206	0.00000162
W-32	Area	835470	818929	22	28	80	0.5	0.000019878	0.00000224	0.00002695	0.000020102	0.00002695	0.000001193	0.00000013	0.00000162	0.000001206	0.00000162
W-33	Area	835261	819042	3	90	12	0.5	0.000019878	0.00000224	0.00002695	0.000020102	0.00002695	0.000001193	0.00000013	0.00000162	0.000001206	0.00000162
W-34	Area	835300	819057	3	76	11	0.5	0.000019878	0.00000224	0.00002695	0.000020102	0.00002695	0.000001193	0.00000013	0.00000162	0.000001206	0.00000162
W-35	Area	835318	819055	3	84	9	0.5	0.000019878	0.00000224	0.00002695	0.000020102	0.00002695	0.000001193	0.00000013	0.00000162	0.000001206	0.00000162
W-36	Area	835326	819074	4	182	9	0.5	0.000019878	0.00000224	0.00002695	0.000020102	0.00002695	0.000001193	0.00000013	0.00000162	0.000001206	0.00000162

Remark:

- The emission of W-24 (Ventilation Building) is removed as there is no work in Year 2015.





LOCATION PLAN

- LEGEND:
- POINT SOURCE
  - LINE SOURCE
  - ⊠ AREA SOURCE

Rev	Description	By	Date

Consultant  
**PARSONS BRINCKERHOFF**

漢臻 **CINOTECH**

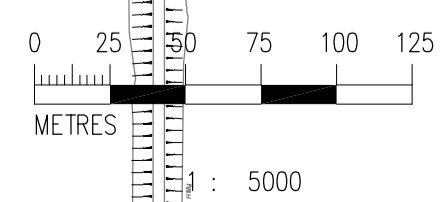
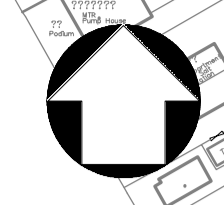
Project title  
 AGREEMENT NO. CE 44/2011 (HY)  
 PROPOSED ROAD IMPROVEMENT WORKS IN  
 WEST KOWLOON RECLAMATION DEVELOPMENT  
 – PHASE 1 INVESTIGATION,  
 DESIGN AND CONSTRUCTION

Drawing title  
**LOCATION OF DUST EMISSION  
 SOURCES AT YEAR 2014  
 (PAGE 1 OF 2)**

Drawing no. <b>FIGURE A3.8-1</b>		Rev. <b>1</b>
Drawn <b>MC</b>	Date <b>JUL13</b>	Checked <b>KS</b> Approved <b>LC</b>
Scale <b>A3 1:5000</b>	Status <b>PRELIMINARY</b>	

© COPYRIGHT RESERVED

路政署  
 HIGHWAYS DEPARTMENT  
 主要工程管理處  
 MAJOR WORKS PROJECT MANAGEMENT OFFICE

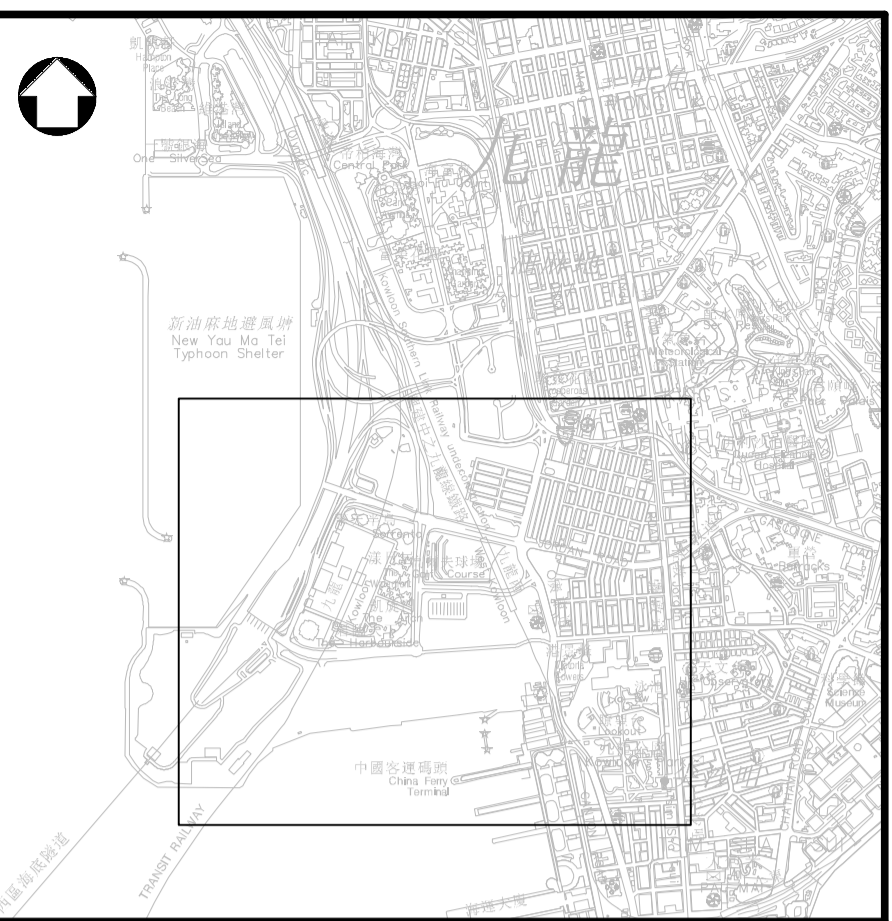
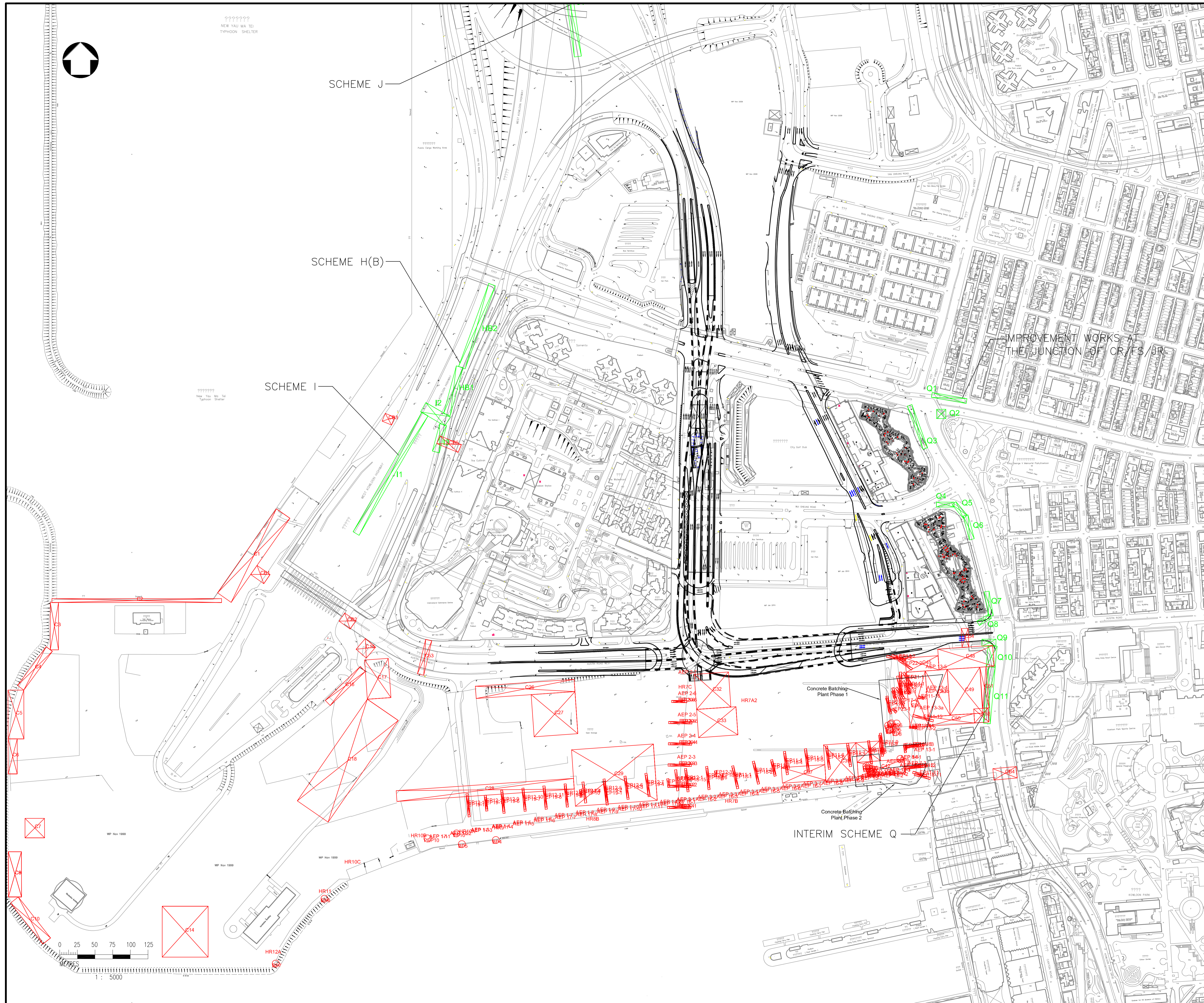


SCHEME H(A)

SCHEME J

NEW YAU MA TEI  
 TYPHOON SHELTER

NEW YAU MA TEI  
 TYPHOON SHELTER



LOCATION PLAN

- LEGEND:
- POINT SOURCE
  - LINE SOURCE
  - ⊠ AREA SOURCE

Rev	Description	By	Date

Consultant

**PARSONS BRINCKERHOFF**

漢臻 CINOTECH

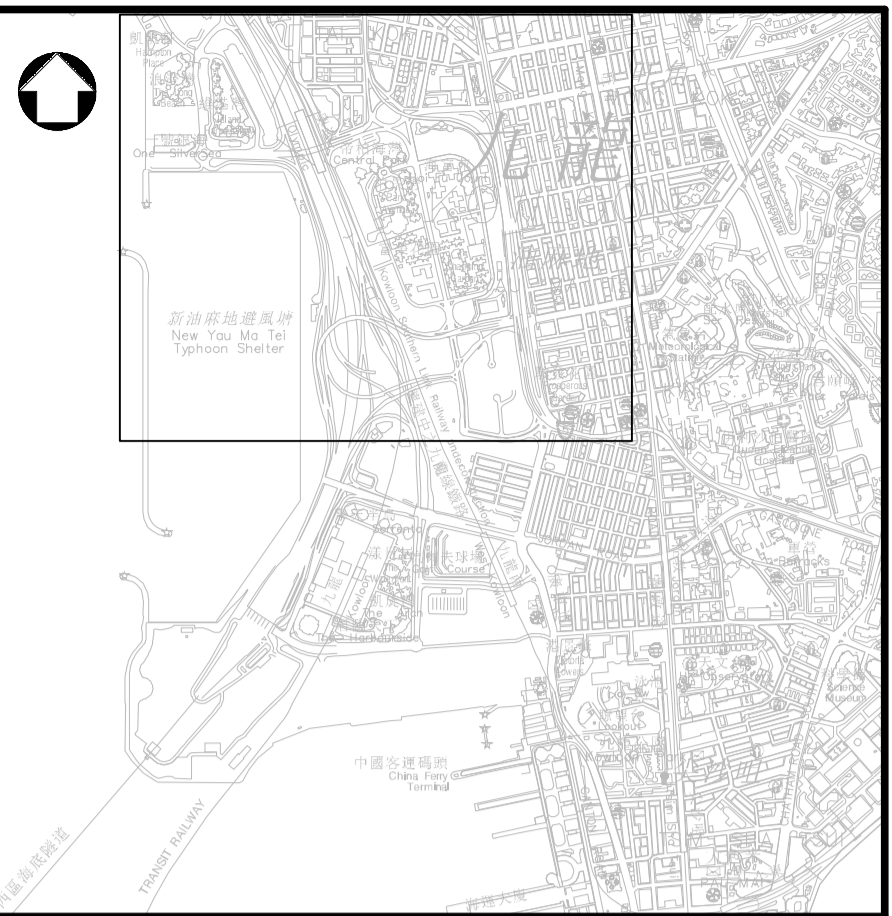
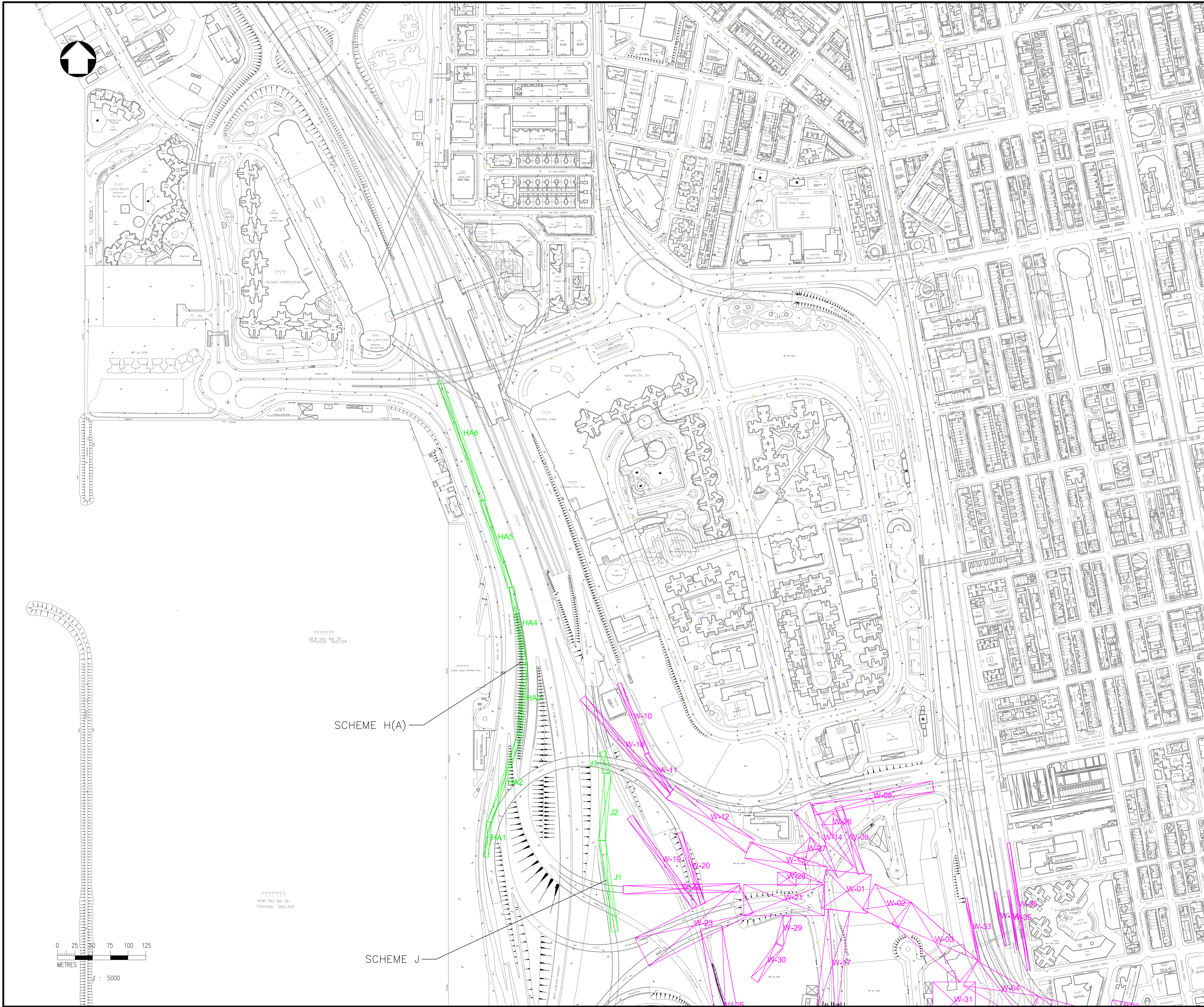
Project title  
 AGREEMENT NO. CE 44/2011 (HY)  
 PROPOSED ROAD IMPROVEMENT WORKS IN WEST KOWLOON RECLAMATION DEVELOPMENT - PHASE 1 INVESTIGATION, DESIGN AND CONSTRUCTION

Drawing title  
**LOCATION OF DUST EMISSION SOURCES AT YEAR 2014 (PAGE 2 OF 2)**

Drawing no. <b>FIGURE A3.8-2</b>		Rev. <b>2</b>	
Drawn <b>MC</b>	Date <b>AUG13</b>	Checked <b>KS</b>	Approved <b>LC</b>
Scale <b>A3 1:5000</b>		Status <b>PRELIMINARY</b>	

© COPYRIGHT RESERVED

**路政署 HIGHWAYS DEPARTMENT**  
 主要工程管理處 MAJOR WORKS PROJECT MANAGEMENT OFFICE



LOCATION PLAN

- LEGEND:
- POINT SOURCE
  - LINE SOURCE
  - ⊠ AREA SOURCE

Rev	Description	By	Date

Consultant  
**PARSONS BRINCKERHOFF**

漢臻 **CINOTECH**

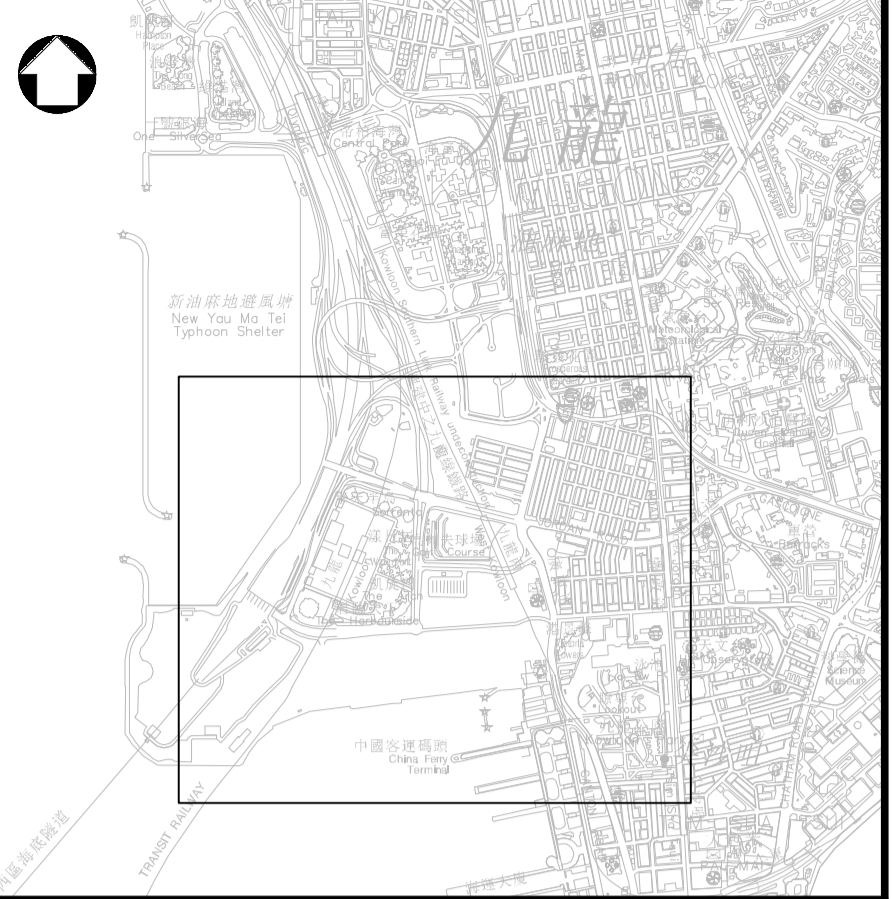
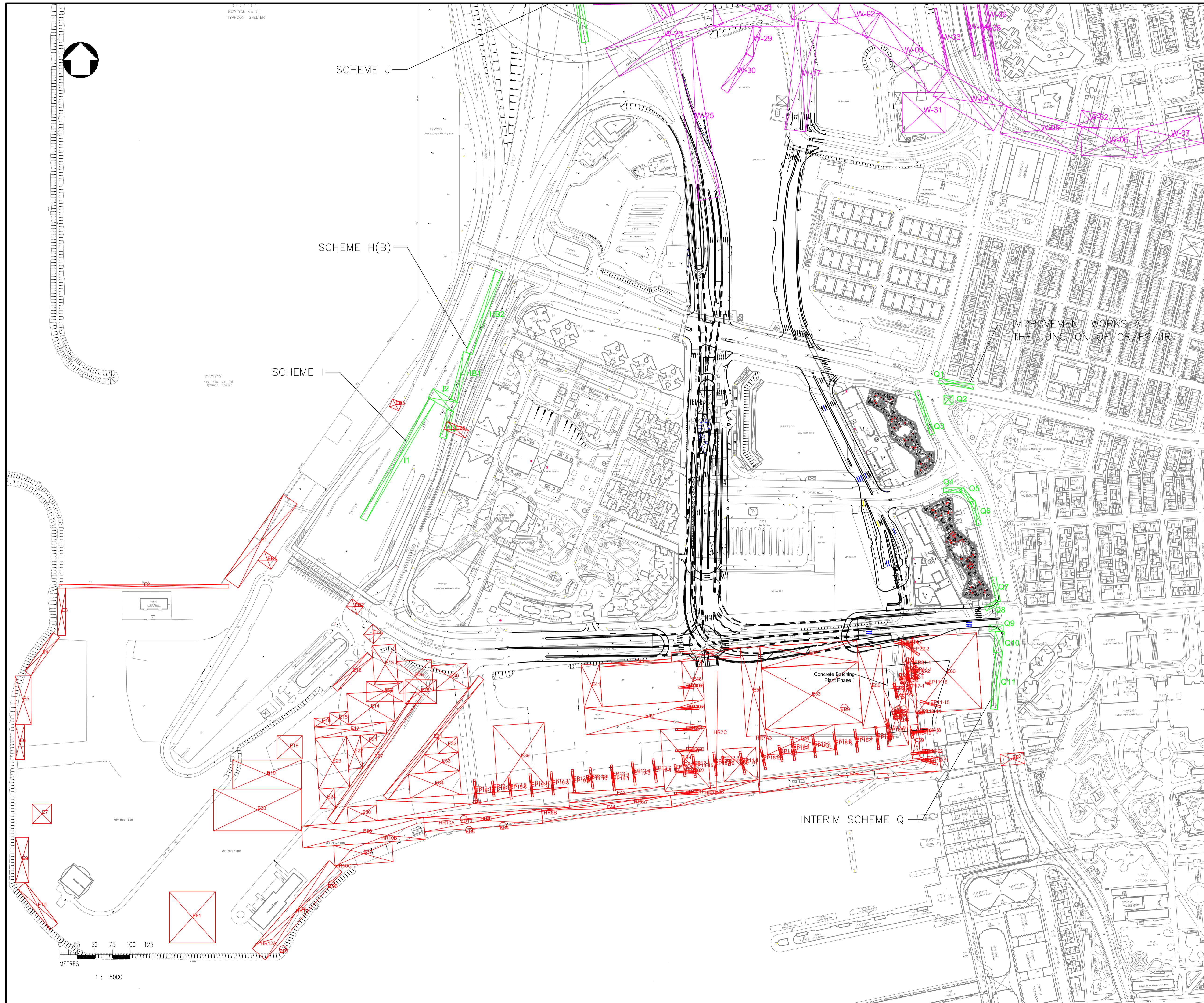
Project title  
 AGREEMENT NO. CE 44/2011 (HY)  
 PROPOSED ROAD IMPROVEMENT WORKS IN  
 WEST KOWLOON RECLAMATION DEVELOPMENT  
 – PHASE 1 INVESTIGATION,  
 DESIGN AND CONSTRUCTION

Drawing title  
**LOCATION OF DUST EMISSION  
 SOURCES AT YEAR 2015  
 (PAGE 1 OF 2)**

Drawing no. <b>FIGURE A3.8-3</b>		Rev. <b>1</b>	
Drawn <b>MC</b>	Date <b>JUL13</b>	Checked <b>KS</b>	Approved <b>LC</b>
Scale <b>A3 1:5000</b>		Status <b>PRELIMINARY</b>	

© COPYRIGHT RESERVED

**路政署**  
**HIGHWAYS DEPARTMENT**  
 主要工程管理處  
 MAJOR WORKS PROJECT MANAGEMENT OFFICE



LOCATION PLAN

- LEGEND:
- POINT SOURCE
  - LINE SOURCE
  - ⊠ AREA SOURCE

Rev	Description	By	Date

Consultant  
**PARSONS BRINCKERHOFF**

漢臻 **CINOTECH**

Project title  
 AGREEMENT NO. CE 44/2011 (HY)  
 PROPOSED ROAD IMPROVEMENT WORKS IN  
 WEST KOWLOON RECLAMATION DEVELOPMENT -  
 PHASE 1 INVESTIGATION,  
 DESIGN AND CONSTRUCTION

Drawing title  
**LOCATION OF DUST EMISSION  
 SOURCES AT YEAR 2015  
 (PAGE 2 OF 2)**

Drawing no. <b>FIGURE A3.8-4</b>		Rev. <b>2</b>	
Drawn <b>MC</b>	Date <b>AUG13</b>	Checked <b>KS</b>	Approved <b>LC</b>
Scale <b>A3 1:5000</b>		Status <b>PRELIMINARY</b>	

© COPYRIGHT RESERVED

**路政署**  
**HIGHWAYS DEPARTMENT**  
 主要工程管理處  
 MAJOR WORKS PROJECT MANAGEMENT OFFICE