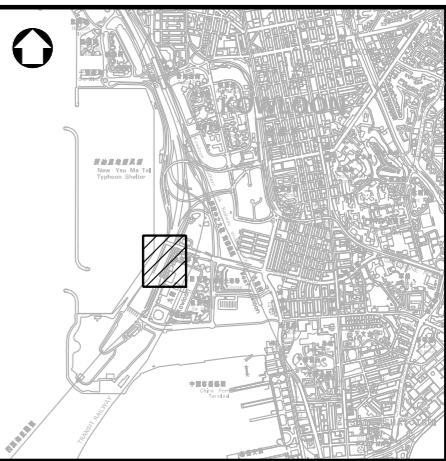
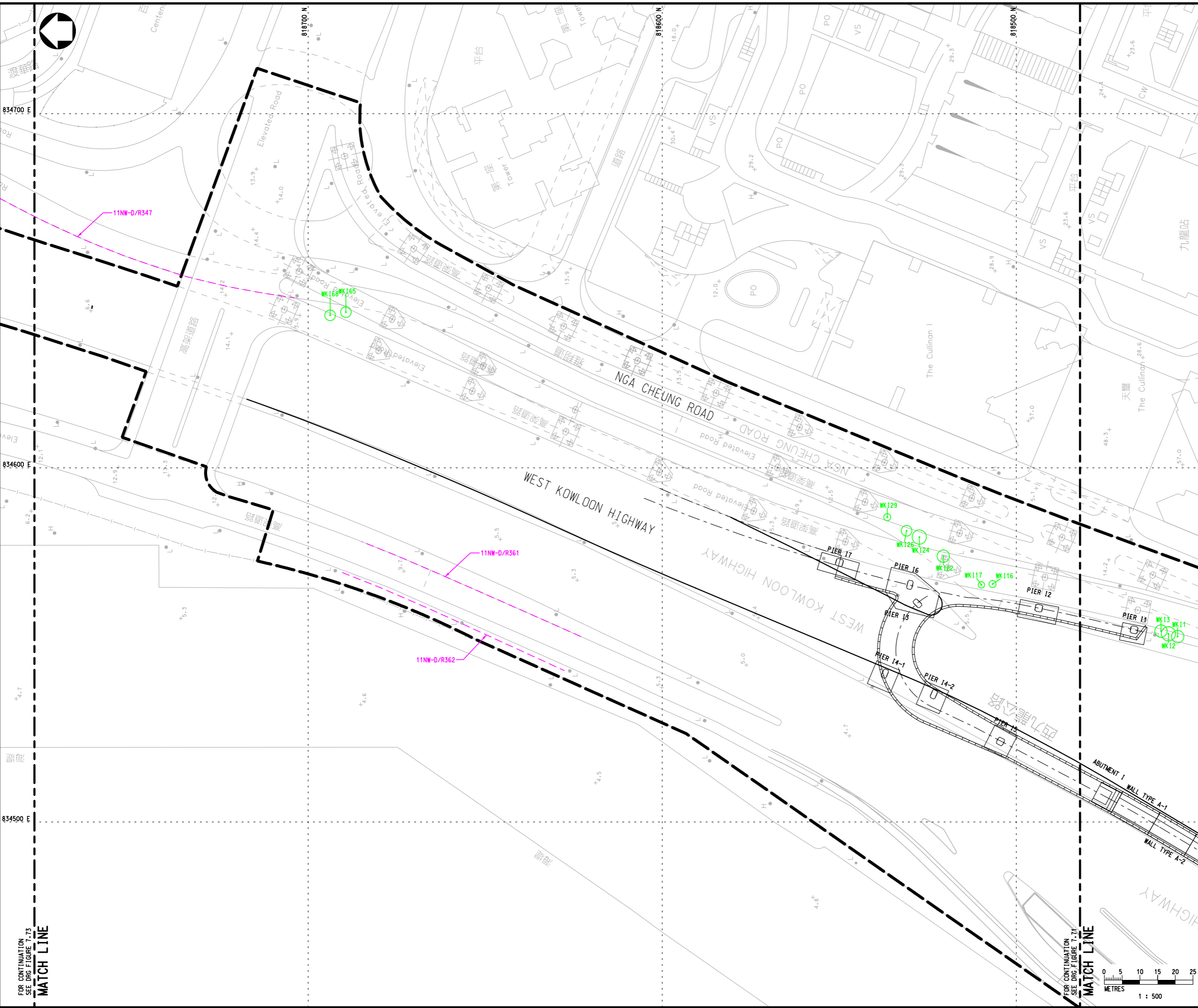


Printed by : 8/15/2013
 Filename : X:\2512043 (HKG-HYD West KLN)\CADD\DRAWING\REPORT\20130726 (EIA REPORT)\PBA-CE44-TL-Fig 7.72.dgn



LOCATION PLAN

- NOTE :**
- EXISTING PLANTERS / PLANTING STRIPS AFFECTED BY THE WORKS SHOULD BE REINSTATED TO THE CONDITION BEFORE BEING AFFECTED AND TO THE SATISFACTION OF THE ENGINEER
- LEGEND :**
- PROPOSED WORKS SITE
 - WK1297 RETAINED TREE (CM3)
 - WK1677 PROPOSED LOCATION FOR TRANSPLANTED TREE (CM4)
 - PROPOSED LOCATION FOR COMPENSATORY TREE (OM1)
 - HyD SIMAR SLOPE / FEATURE

Rev	Description	By	Date

Consultant
PARSONS BRINCKERHOFF

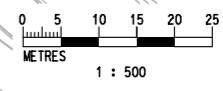
Project title
 AGREEMENT NO. CE 44/2011 (HY)
 PROPOSED ROAD IMPROVEMENT WORKS IN WEST KOWLOON RECLAMATION DEVELOPMENT - PHASE 1 INVESTIGATION, DESIGN AND CONSTRUCTION

Drawing title
TREE AND LANDSCAPE PLAN
SHEET 2 OF 8

Drawing no. FIGURE 7.72		Rev. -	
Drawn CAD	Date -	Checked -	Approved -
Scale 1:500 (A1)		Status PRELIMINARY DESIGN	

© COPYRIGHT RESERVED

路政署
 HIGHWAYS DEPARTMENT
 主要工程管理處
 MAJOR WORKS PROJECT MANAGEMENT OFFICE



FOR CONTINUATION
 SEE DRG FIGURE 7.73
MATCH LINE

FOR CONTINUATION
 SEE DRG FIGURE 7.71
MATCH LINE