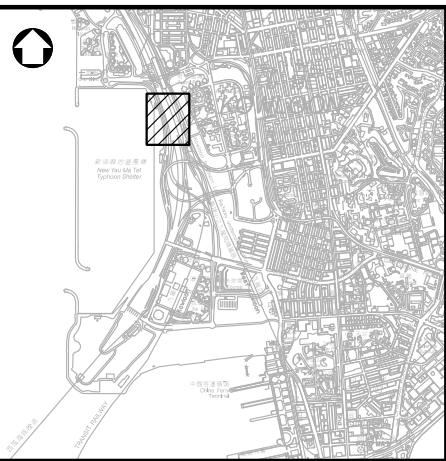
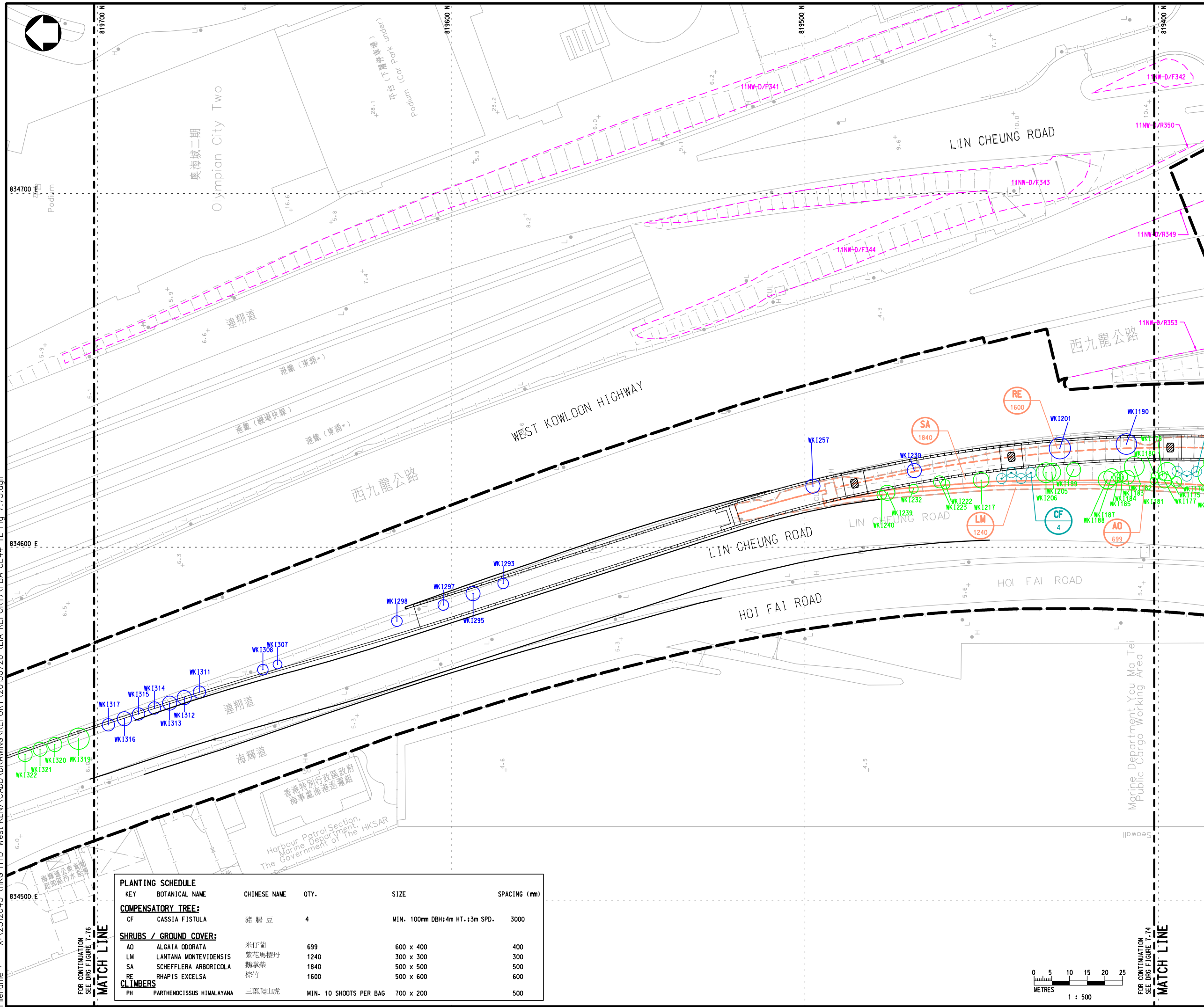


Printed by : 15/8/2013
 Filename : X:\2512043 (HKG-HYD West KLN)\CADD\DRAWING\REPORT\20130726 (EIA REPORT)\PBA-CE44-TL-Fig 7.75.dgn



LOCATION PLAN

NOTE :
 1. EXISTING PLANTERS / PLANTING STRIPS AFFECTED BY THE WORKS SHOULD BE REINSTATED TO THE CONDITION BEFORE BEING AFFECTED AND TO THE SATISFACTION OF THE ENGINEER

- LEGEND :**
- PROPOSED WORKS SITE
 - WK1297 RETAINED TREE (CM3)
 - WK1677 PROPOSED LOCATION FOR TRANSPLANTED TREE (CM4)
 - PROPOSED LOCATION FOR COMPENSATORY TREE (OM1)
 - HyD SIMAR SLOPE / FEATURE
 - PROPOSED CLIMBERS ON PIER (OM2)

Rev	Description	By	Date

Consultant
PARSONS BRINCKERHOFF

Project title
 AGREEMENT NO. CE 44/2011 (HY)
 PROPOSED ROAD IMPROVEMENT WORKS IN WEST KOWLOON RECLAMATION DEVELOPMENT - PHASE 1 INVESTIGATION, DESIGN AND CONSTRUCTION

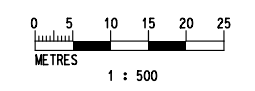
Drawing title
TREE AND LANDSCAPE PLAN SHEET 5 OF 8

Drawing no. FIGURE 7.75		Rev. -	
Drawn CAD	Date	Checked	Approved
Scale 1:500 (A1)	Status PRELIMINARY DESIGN		

© COPYRIGHT RESERVED



KEY	BOTANICAL NAME	CHINESE NAME	QTY.	SIZE	SPACING (mm)
COMPENSATORY TREE:					
CF	CASSIA FISTULA	豬腸豆	4	MIN. 100mm DBH; 4m HT. +3m SPD.	3000
SHRUBS / GROUND COVER:					
AD	ALGATA ODRATA	米仔蘭	699	600 x 400	400
LM	LANтана MONTEVIDENSIS	紫花馬櫻丹	1240	300 x 300	300
SA	SCHEFFLERA ARBORICOLA	鵝掌楸	1840	500 x 500	500
RE	RHAPIS EXCELSA	棕竹	1600	500 x 600	600
CLIMBERS					
PH	PARthenocissus HIMALAYANA	三葉爬山虎	MIN. 10 SHOOTS PER BAG	700 x 200	500



FOR CONTINUATION SEE DRG FIGURE 7.76

FOR CONTINUATION SEE DRG FIGURE 7.74