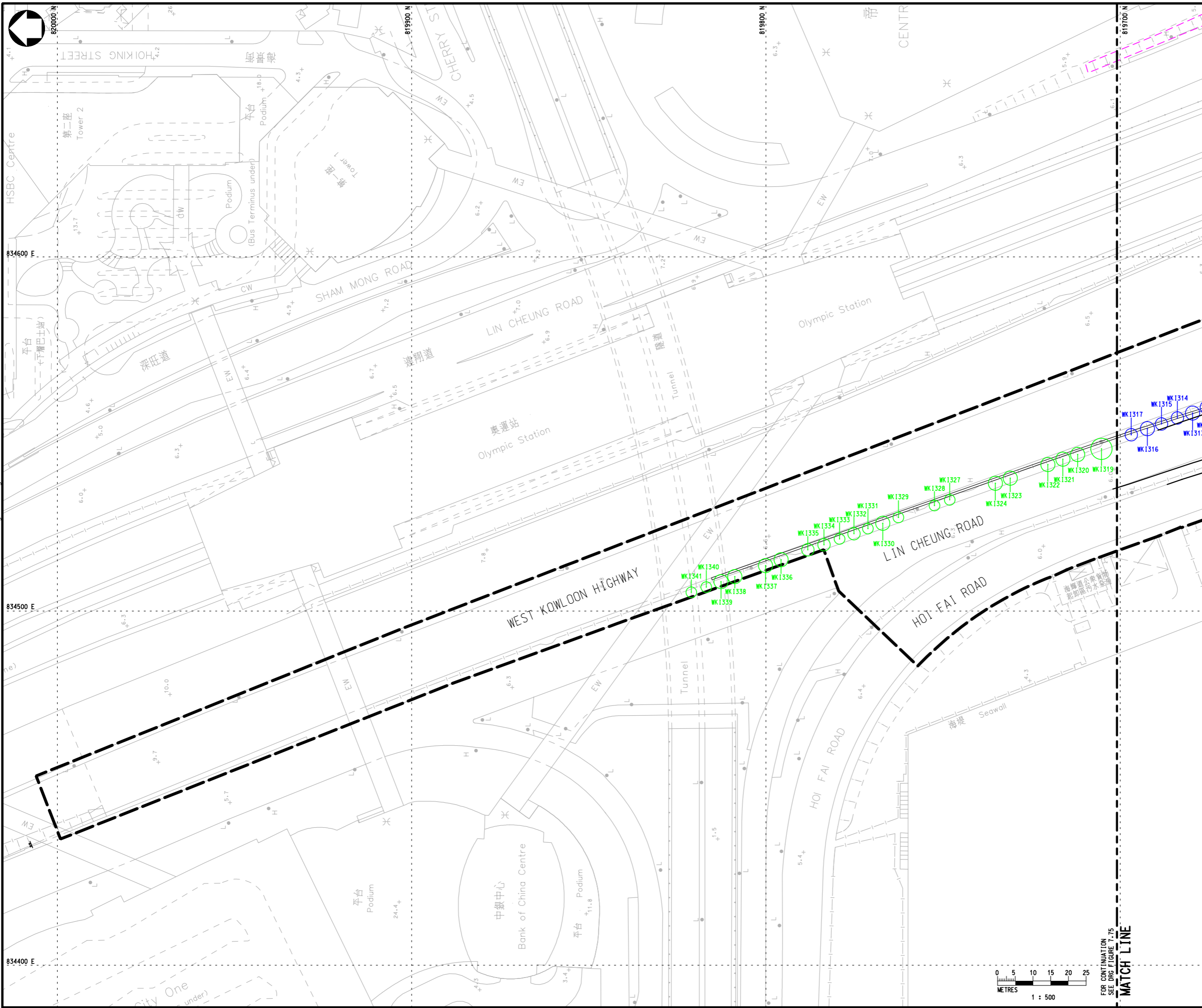


Printed by : 15/8/2013
 Filename : X:\2512043 (HKG-HYD West KLN)\CADD\DRAWING\REPORT\20130726 (EIA REPORT)\PBA-CE44-TL-Fig 7.76.dgn



LOCATION PLAN

NOTE :
 1. EXISTING PLANTERS / PLANTING STRIPS AFFECTED BY THE WORKS SHOULD BE REINSTATED TO THE CONDITION BEFORE BEING AFFECTED AND TO THE SATISFACTION OF THE ENGINEER

- LEGEND :
- PROPOSED WORKS SITE
 - RETAINED TREE (CM3)
 - PROPOSED LOCATION FOR TRANSPLANTED TREE (CM4)
 - PROPOSED LOCATION FOR COMPENSATORY TREE (OM1)
 - HyD SIMAR SLOPE / FEATURE

Rev	Description	By	Date

Consultant
PARSONS BRINCKERHOFF

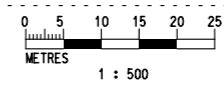
Project title
 AGREEMENT NO. CE 44/2011 (HY)
 PROPOSED ROAD IMPROVEMENT WORKS IN WEST KOWLOON RECLAMATION DEVELOPMENT - PHASE 1 INVESTIGATION, DESIGN AND CONSTRUCTION

Drawing title
TREE AND LANDSCAPE PLAN
SHEET 6 OF 8

Drawing no. FIGURE 7.76		Rev. -	
Drawn CAD	Date	Checked	Approved
Scale 1:500 (A1)	Status PRELIMINARY DESIGN		

© COPYRIGHT RESERVED

路政署
 HIGHWAYS DEPARTMENT
 主要工程管理處
 MAJOR WORKS PROJECT MANAGEMENT OFFICE



FOR CONTINUATION SEE DRG FIGURE 7.75
MATCH LINE