



LCA1 Urban Residential



LCA2 - City Mixed Grid Urban



LCA3 - Ongoing Development



LCA4 - Port+Dock



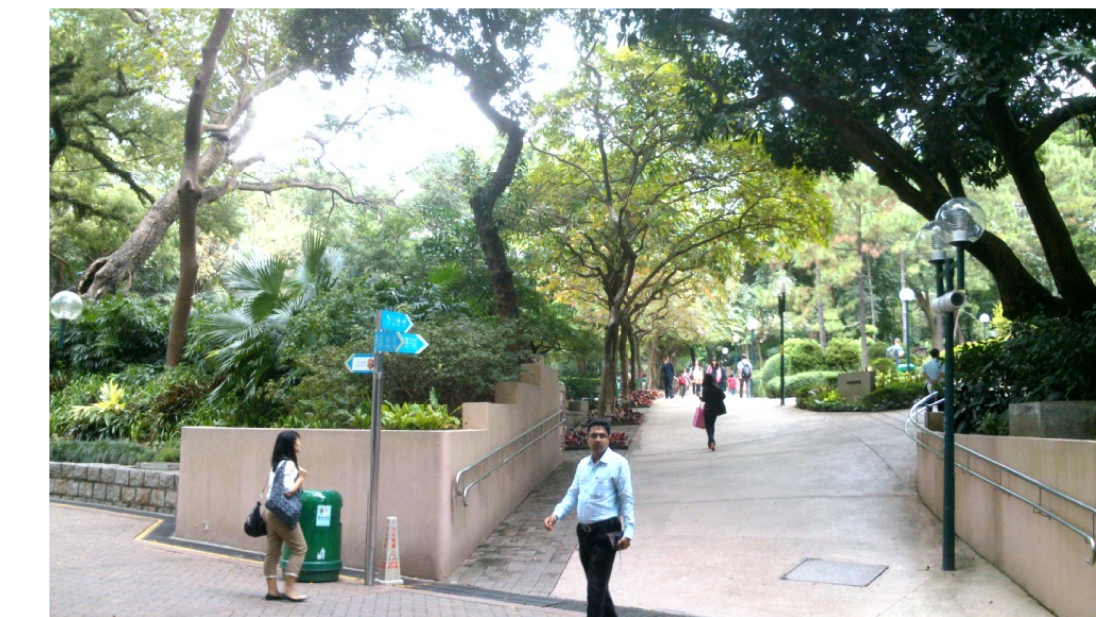
LCA5.1 Transportation Corridor  
- West Kowloon Highway



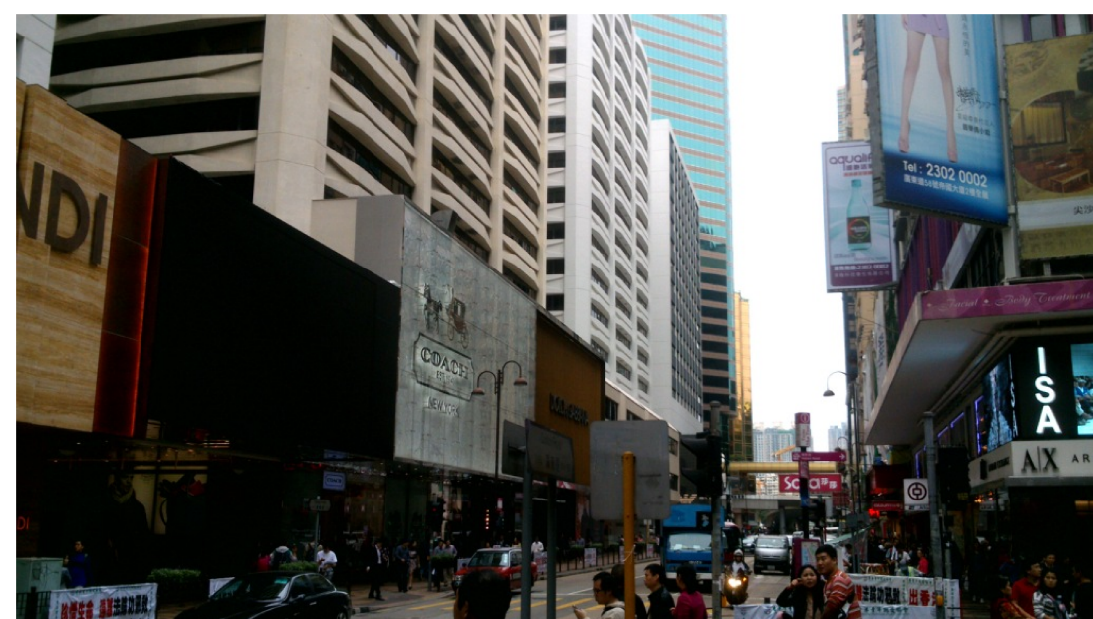
LCA5.2 Transportation Corridor  
- Canton Road



LCA6 Typhoon Shelter



LCA7 Urban Recreational Area



LCA8 Commercial



LCA9 Strait



LCA10 Late 20C/Early 21C  
Commercial/Residential  
Complex

Rev	Description	By	Date

Consultant  
**PARSONS BRINCKERHOFF**

Project title  
 AGREEMENT NO. CE 44/2011 (HY)  
 PROPOSED ROAD IMPROVEMENT WORKS IN  
 WEST KOWLOON RECLAMATION DEVELOPMENT  
 - PHASE 1 INVESTIGATION,  
 DESIGN AND CONSTRUCTION

Drawing title  
 PHOTOGRAPHIC RECORD OF  
 LANDSCAPE  
 CHARACTER AREAS

Drawing no. FIGURE 7.7b		Rev. -	
Drawn CAD	Date -	Checked -	Approved -
Scale N.T.S.		Status PRELIMINARY DESIGN	

© COPYRIGHT RESERVED

 路政署  
 HIGHWAYS DEPARTMENT  
 主要工程管理處  
 MAJOR WORKS PROJECT MANAGEMENT OFFICE