

LOCATION PLAN

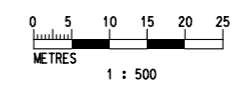
- LEGEND :**
- WK1297 TREE TO BE RETAINED
  - WK1677 TREE TO BE TRANSPLANTED
  - WK1670 TREE TO BE FELLED
  - HYD SIMAR SLOPE / FEATURE
  - PROPOSED WORKS SITE

Rev	Description	By	Date
Consultant			
<b>PARSONS BRINCKERHOFF</b>			
Project title			
AGREEMENT NO. CE 44/2011 (HY) PROPOSED ROAD IMPROVEMENT WORKS IN WEST KOWLOON RECLAMATION DEVELOPMENT - PHASE 1 INVESTIGATION, DESIGN AND CONSTRUCTION			
Drawing title			
<b>SCHEME H(A) EXISTING TREE SURVEY PLAN (SHEET 1 OF 3)</b>			
Drawing no.		Rev.	
<b>FIGURE 7.5a</b>		-	
Drawn	Date	Checked	Approved
CAD	-	-	-
Scale	Status		
1:500 (A1)	PRELIMINARY DESIGN		
© COPYRIGHT RESERVED			

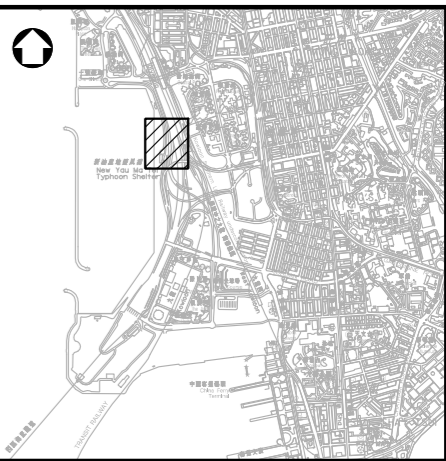
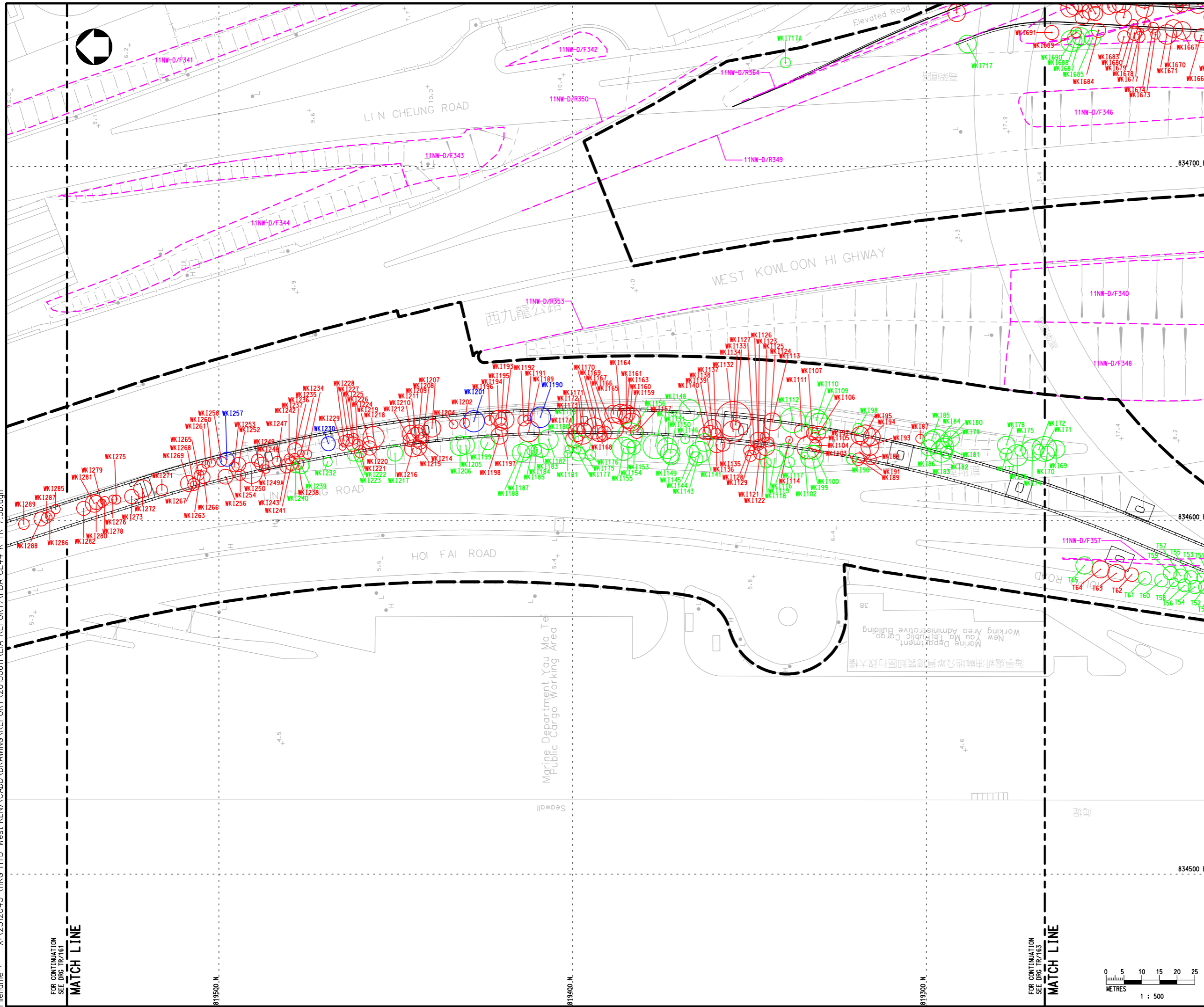


FOR CONTINUATION  
SEE DRG TR/162

MATCH LINE



海事處油麻地公眾貨物裝卸區



LOCATION PLAN

- LEGEND :
- WK1297 TREE TO BE RETAINED
  - WK1677 TREE TO BE TRANSPLANTED
  - WK1670 TREE TO BE FELLED
  - HYD SIMAR SLOPE / FEATURE
  - PROPOSED WORKS SITE

Rev	Description	By	Date

Consultant  
**PARSONS BRINCKERHOFF**

Project title  
 AGREEMENT NO. CE 44/2011 (HY)  
 PROPOSED ROAD IMPROVEMENT WORKS IN  
 WEST KOWLOON RECLAMATION DEVELOPMENT  
 - PHASE 1 INVESTIGATION,  
 DESIGN AND CONSTRUCTION

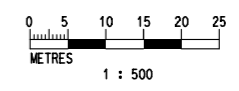
Drawing title  
**SCHEME H(A)  
 EXISTING TREE SURVEY PLAN  
 (SHEET 2 OF 3)**

Drawing no. **FIGURE 7.5b** Rev. -

Drawn CAD	Date -	Checked -	Approved -
Scale 1:500 (A1)	Status <b>PRELIMINARY DESIGN</b>		

© COPYRIGHT RESERVED

路政署  
 HIGHWAYS DEPARTMENT  
 主要工程管理處  
 MAJOR WORKS PROJECT MANAGEMENT OFFICE



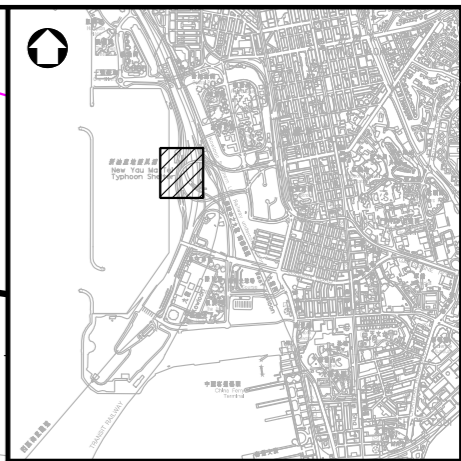
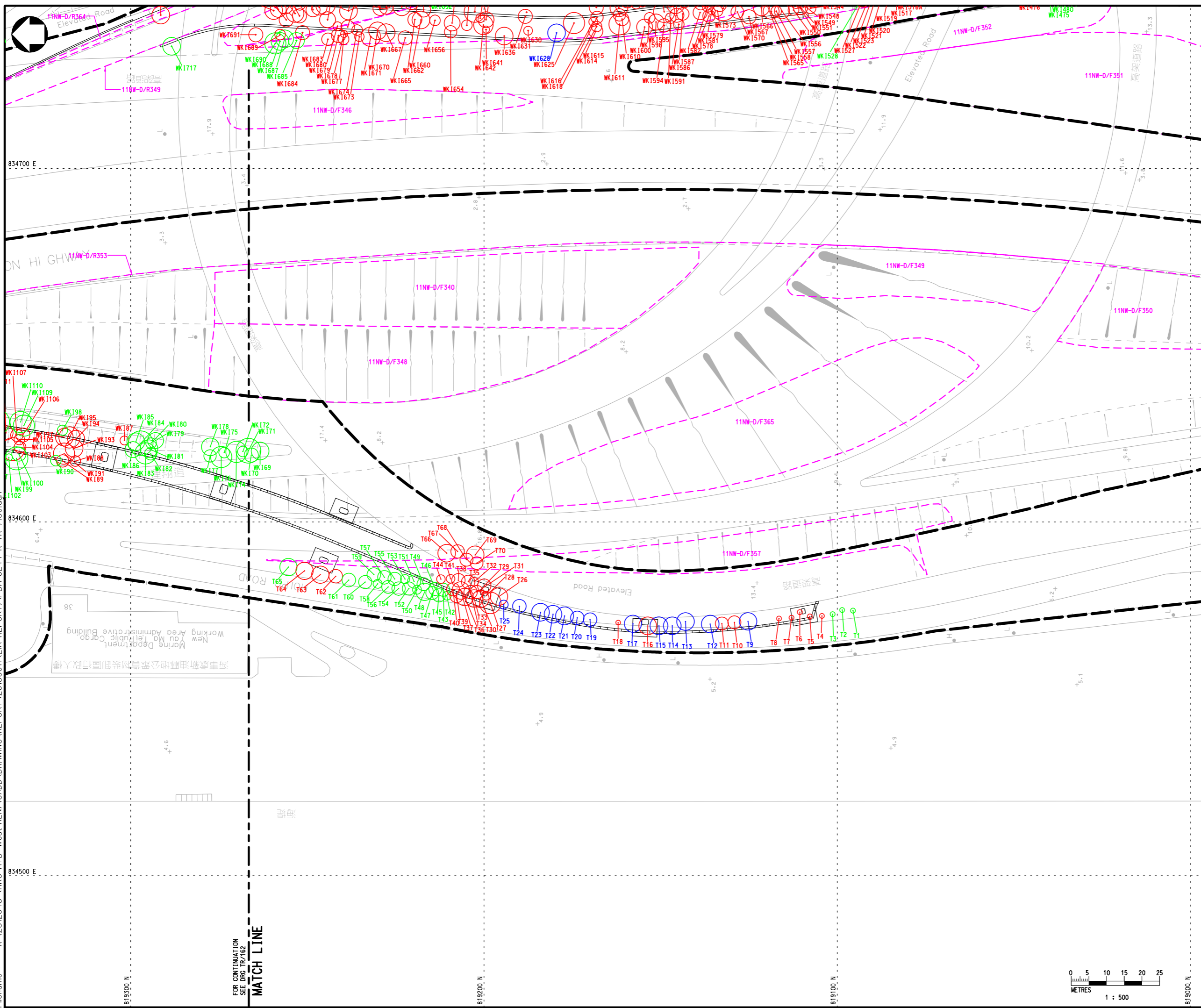
FOR CONTINUATION  
 SEE DRG TR/161  
**MATCH LINE**

FOR CONTINUATION  
 SEE DRG TR/163  
**MATCH LINE**

819500 N.

819400 N.

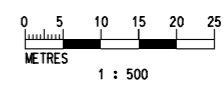
819300 N.



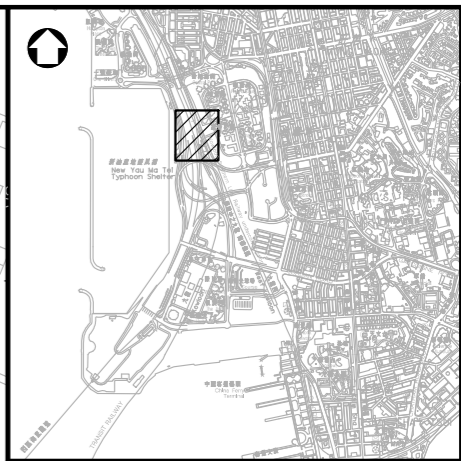
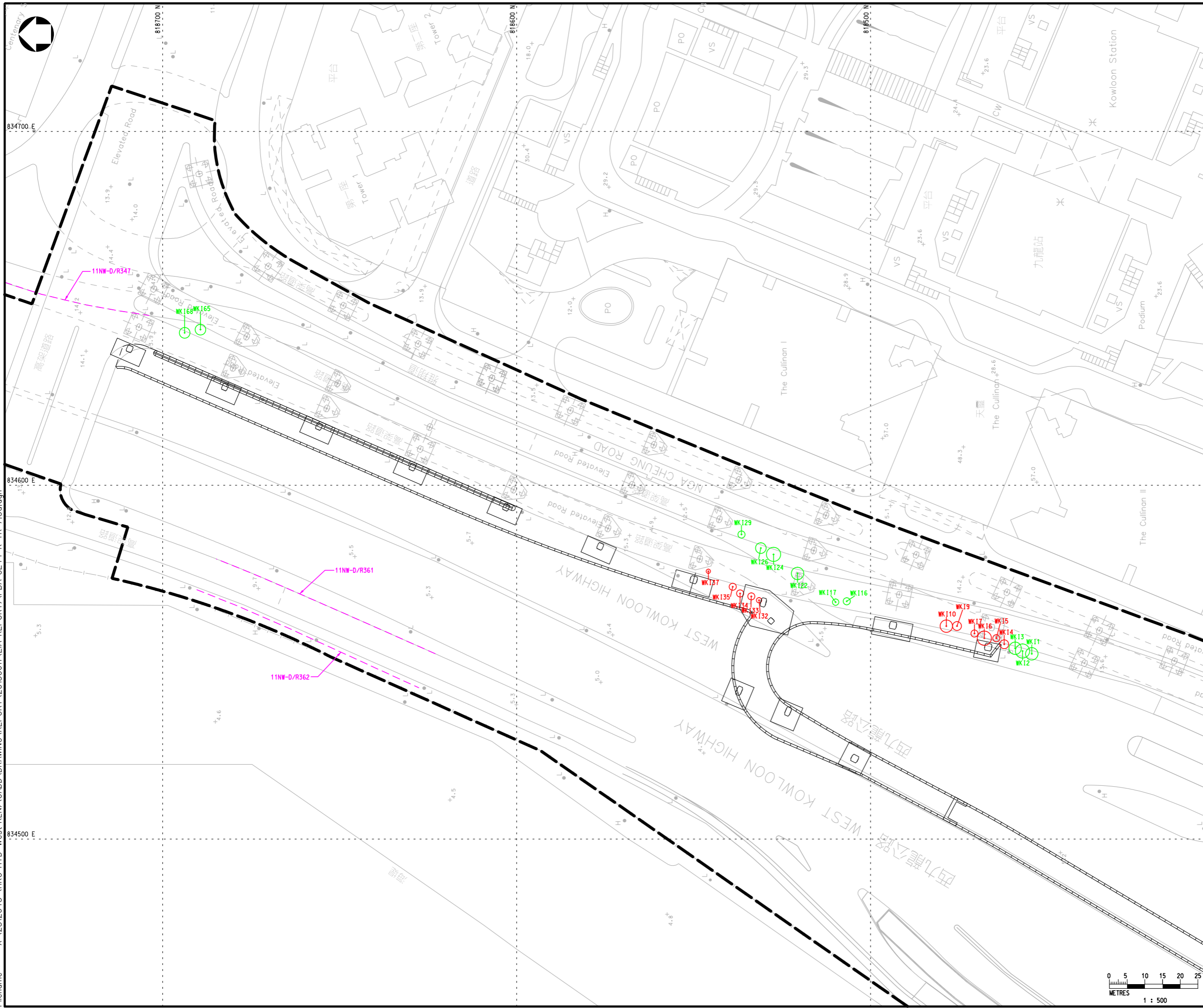
LOCATION PLAN

- LEGEND :**
- WK1297 TREE TO BE RETAINED
  - WK1677 TREE TO BE TRANSPLANTED
  - WK1670 TREE TO BE FELLED
  - HYD SIMAR SLOPE / FEATURE
  - PROPOSED WORKS SITE

Rev	Description	By	Date	
<b>PARSONS BRINCKERHOFF</b>				
Project title AGREEMENT NO. CE 44/2011 (HY) PROPOSED ROAD IMPROVEMENT WORKS IN WEST KOWLOON RECLAMATION DEVELOPMENT - PHASE 1 INVESTIGATION, DESIGN AND CONSTRUCTION				
Drawing title <b>SCHEME H(A)          EXISTING TREE SURVEY PLAN          (SHEET 3 OF 3)</b>				
Drawing no.		FIGURE 7.5c		Rev.
				-
Drawn	Date	Checked	Approved	
CAD	-	-	-	
Scale	1:500 (A1)		Status	
		PRELIMINARY DESIGN		
© COPYRIGHT RESERVED				
路政署 HIGHWAYS DEPARTMENT 主要工程管理處 MAJOR WORKS PROJECT MANAGEMENT OFFICE				



FOR CONTINUATION  
SEE DRG TR/162  
**MATCH LINE**



LOCATION PLAN

- LEGEND :**
- WK1297 TREE TO BE RETAINED
  - WK1677 TREE TO BE TRANSPLANTED
  - WK1670 TREE TO BE FELLED
  - Hyd SIMAR SLOPE / FEATURE
  - PROPOSED WORKS SITE

Rev	Description	By	Date

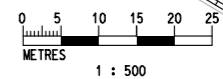
Consultant  
**PARSONS BRINCKERHOFF**

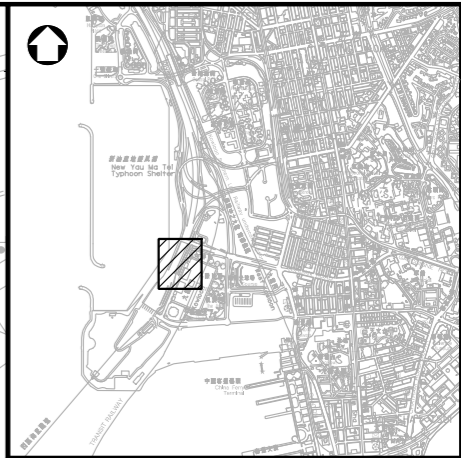
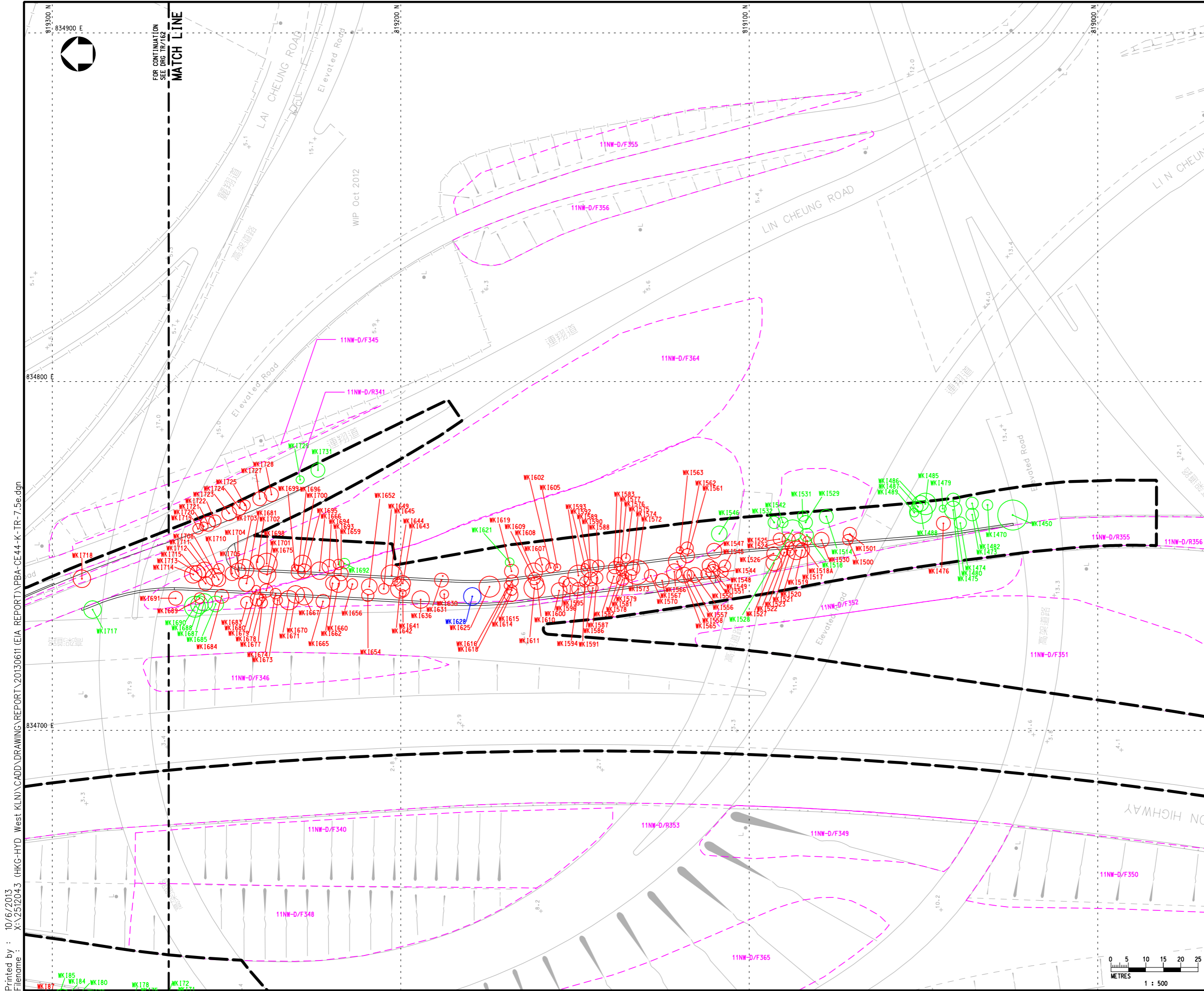
Project title  
 AGREEMENT NO. CE 44/2011 (HY)  
 PROPOSED ROAD IMPROVEMENT WORKS IN  
 WEST KOWLOON RECLAMATION DEVELOPMENT  
 - PHASE I INVESTIGATION,  
 DESIGN AND CONSTRUCTION

Drawing title  
**SCHEME H(B) & I  
 EXISTING TREE SURVEY PLAN**

Drawing no. <b>FIGURE 7.5d</b>		Rev. -	
Drawn CAD	Date -	Checked -	Approved -
Scale 1:500 (A1)		Status <b>PRELIMINARY DESIGN</b>	

© COPYRIGHT RESERVED





LOCATION PLAN

- LEGEND :**
- WK1297 TREE TO BE RETAINED
  - WK1677 TREE TO BE TRANSPLANTED
  - WK1670 TREE TO BE FELLED
  - Hyd SIMAR SLOPE / FEATURE
  - PROPOSED WORKS SITE

Rev	Description	By	Date

Consultant  
**PARSONS BRINCKERHOFF**

Project title  
 AGREEMENT NO. CE 44/2011 (HY)  
 PROPOSED ROAD IMPROVEMENT WORKS IN  
 WEST KOWLOON RECLAMATION DEVELOPMENT  
 - PHASE 1 INVESTIGATION,  
 DESIGN AND CONSTRUCTION

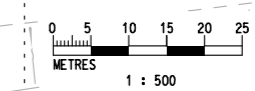
Drawing title  
**SCHEME J  
 EXISTING TREE SURVEY PLAN**

Drawing no. **FIGURE 7.5e** Rev. -

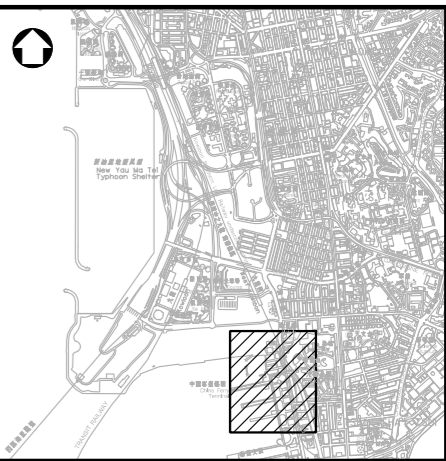
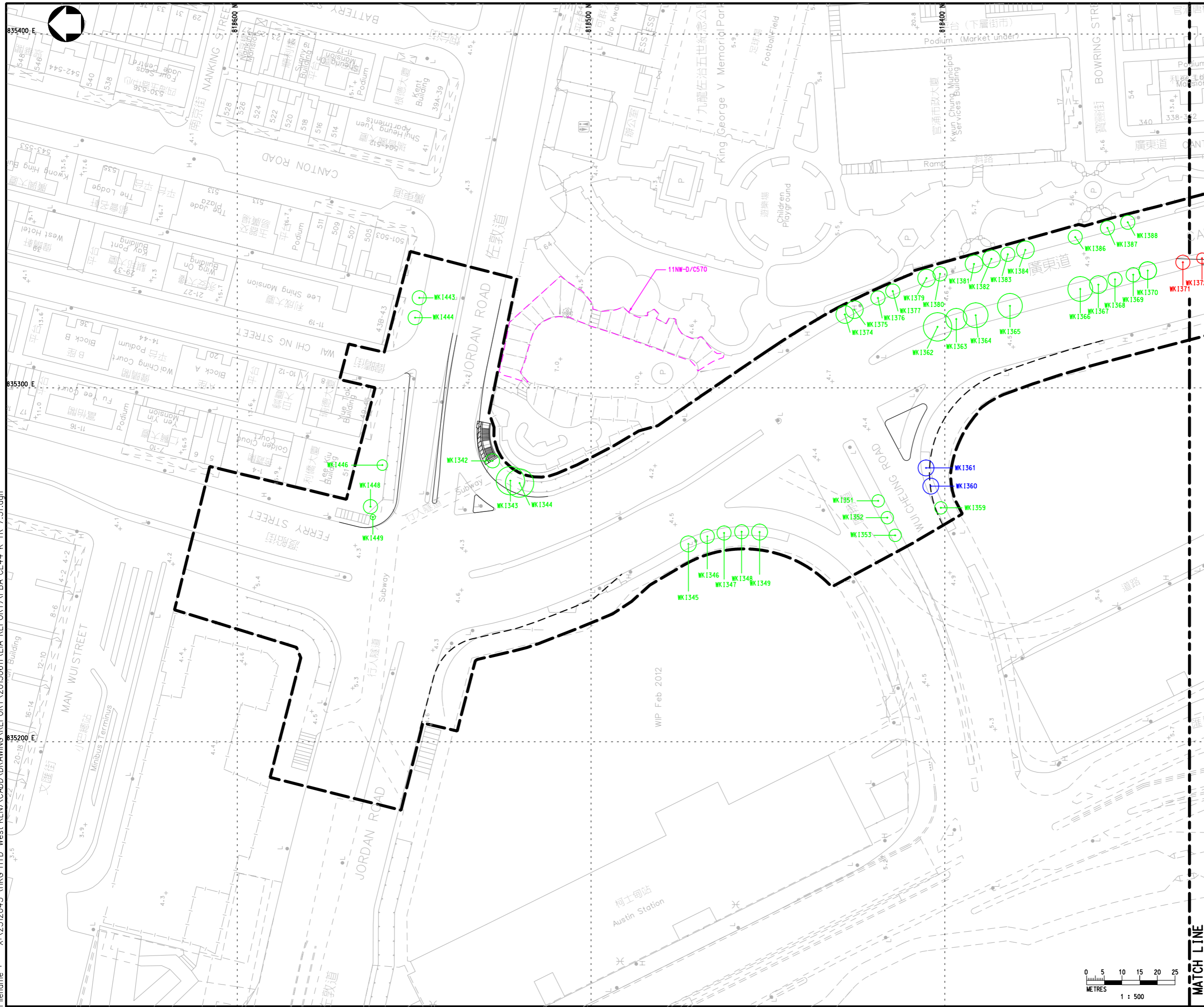
Drawn CAD	Date -	Checked -	Approved -
Scale 1:500 (A1)	Status <b>PRELIMINARY DESIGN</b>		

© COPYRIGHT RESERVED

路政署  
 HIGHWAYS DEPARTMENT  
 主要工程管理處  
 MAJOR WORKS PROJECT MANAGEMENT OFFICE



Printed by : 10/6/2013  
 Filename : X:\2512043 (HKG-HYD West KLN)\CADD\DRAWING\REPORT\20130611 (EIA REPORT)\PBA-CE44-K-TR-7.5e.dgn



LOCATION PLAN

- LEGEND :
- WK1297 TREE TO BE RETAINED
  - WK1677 TREE TO BE TRANSPLANTED
  - WK1670 TREE TO BE FELLED
  - Hyd SIMAR SLOPE / FEATURE
  - PROPOSED WORKS SITE

Rev	Description	By	Date

Consultant  
**PARSONS BRINCKERHOFF**

Project title  
 AGREEMENT NO. CE 44/2011 (HY)  
 PROPOSED ROAD IMPROVEMENT WORKS IN  
 WEST KOWLOON RECLAMATION DEVELOPMENT  
 - PHASE 1 INVESTIGATION,  
 DESIGN AND CONSTRUCTION

Drawing title  
**SCHEME Q**  
**EXISTING TREE SURVEY PLAN**  
 (SHEET 1 OF 2)

Drawing no.  
**FIGURE 7.5f**

Drawn CAD	Date -	Checked -	Approved -
Scale 1:500 (A1)	Status <b>PRELIMINARY DESIGN</b>		

© COPYRIGHT RESERVED

路政署  
 HIGHWAYS DEPARTMENT  
 主要工程管理處  
 MAJOR WORKS PROJECT MANAGEMENT OFFICE



MATCH LINE

