

LOCATION PLAN

- NOTE :**
- EXISTING PLANTERS / PLANTING STRIPS AFFECTED BY THE WORKS SHOULD BE REINSTATED TO THE CONDITION BEFORE BEING AFFECTED AND TO THE SATISFACTION OF THE ENGINEER
- LEGEND :**
- PROPOSED WORKS SITE
  - RETAINED TREE (CM3)
  - PROPOSED LOCATION FOR TRANSPLANTED TREE (CM4)
  - PROPOSED LOCATION FOR COMPENSATORY TREE (OM1)
  - HYD SIMAR SLOPE / FEATURE

Rev	Description	By	Date

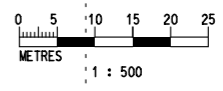
Consultant  
**PARSONS BRINCKERHOFF**

Project title  
 AGREEMENT NO. CE 44/2011 (HY)  
 PROPOSED ROAD IMPROVEMENT WORKS IN WEST KOWLOON RECLAMATION DEVELOPMENT - PHASE 1 INVESTIGATION, DESIGN AND CONSTRUCTION

Drawing title  
**TREE AND LANDSCAPE PLAN SHEET 1 OF 8**

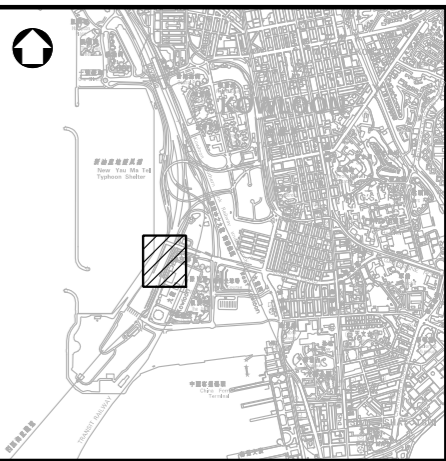
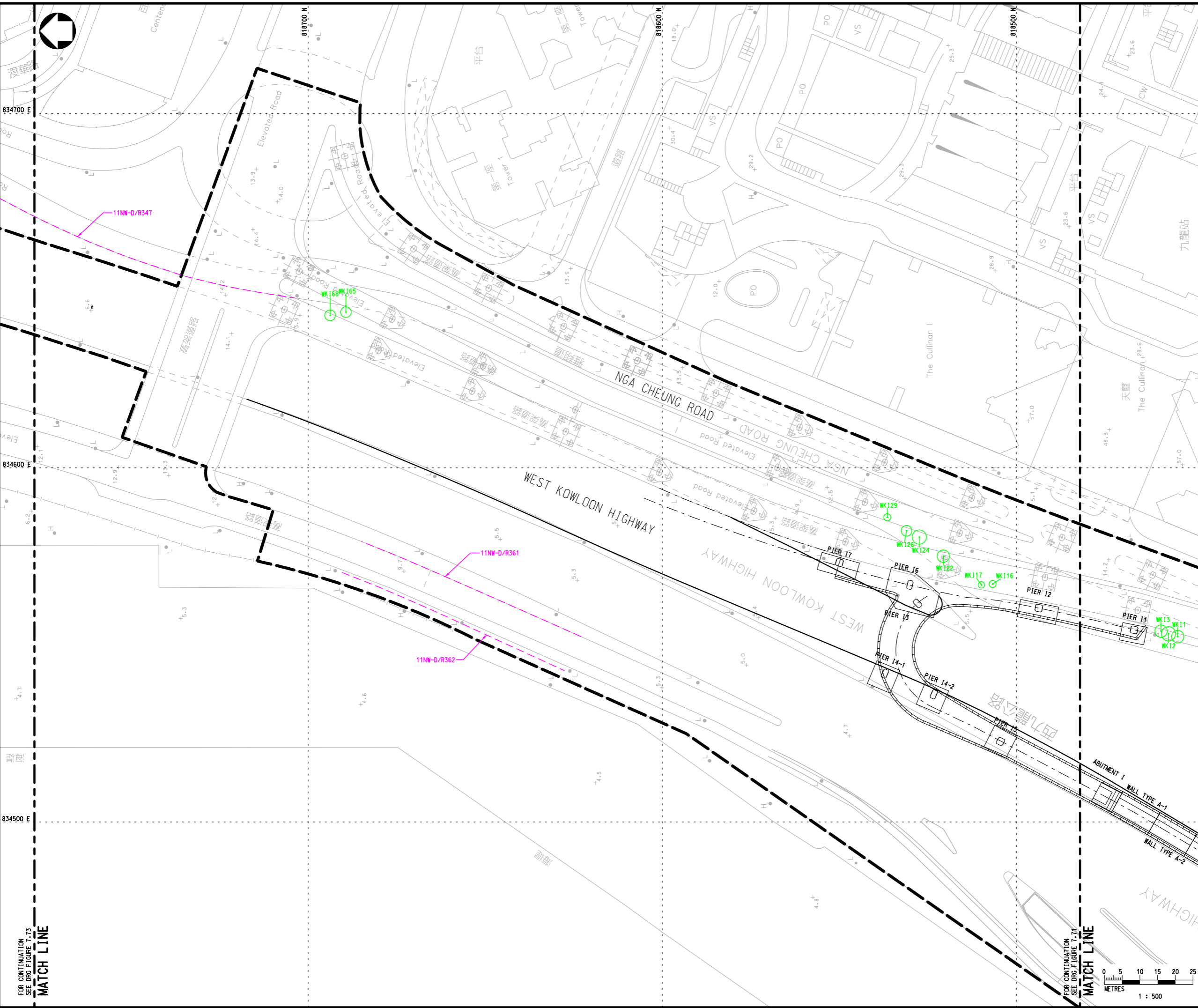
Drawing no. <b>FIGURE 7.71</b>		Rev. -	
Drawn CAD	Date -	Checked -	Approved -
Scale 1:500 (A1)		Status <b>PRELIMINARY DESIGN</b>	

© COPYRIGHT RESERVED



FOR CONTINUATION  
 SEE DRG FIGURE 7.71  
**MATCH LINE**

Printed by : 8/15/2013  
 Filename : X:\2512043 (HKG-HYD West KLN)\CADD\DRAWING\REPORT\20130726 (EIA REPORT)\PBA-CE44-TL-Fig 7.72.dgn



LOCATION PLAN

- NOTE :**
- EXISTING PLANTERS / PLANTING STRIPS AFFECTED BY THE WORKS SHOULD BE REINSTATED TO THE CONDITION BEFORE BEING AFFECTED AND TO THE SATISFACTION OF THE ENGINEER
- LEGEND :**
- PROPOSED WORKS SITE
  - RETAINED TREE (CM3)
  - PROPOSED LOCATION FOR TRANSPLANTED TREE (CM4)
  - PROPOSED LOCATION FOR COMPENSATORY TREE (OM1)
  - HyD SIMAR SLOPE / FEATURE

Rev	Description	By	Date

Consultant  
**PARSONS BRINCKERHOFF**

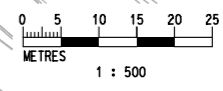
Project title  
 AGREEMENT NO. CE 44/2011 (HY)  
 PROPOSED ROAD IMPROVEMENT WORKS IN WEST KOWLOON RECLAMATION DEVELOPMENT - PHASE 1 INVESTIGATION, DESIGN AND CONSTRUCTION

Drawing title  
**TREE AND LANDSCAPE PLAN**  
**SHEET 2 OF 8**

Drawing no. <b>FIGURE 7.72</b>		Rev. -	
Drawn CAD	Date -	Checked -	Approved -
Scale 1:500 (A1)		Status <b>PRELIMINARY DESIGN</b>	

© COPYRIGHT RESERVED

路政署  
 HIGHWAYS DEPARTMENT  
 主要工程管理處  
 MAJOR WORKS PROJECT MANAGEMENT OFFICE

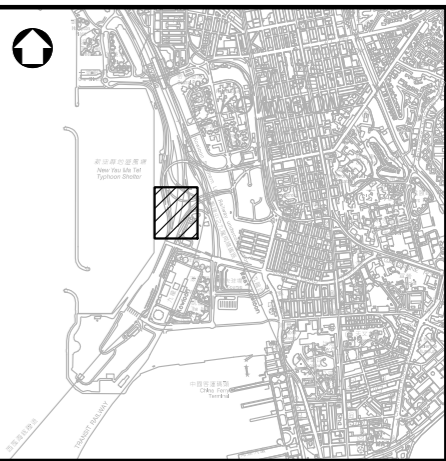
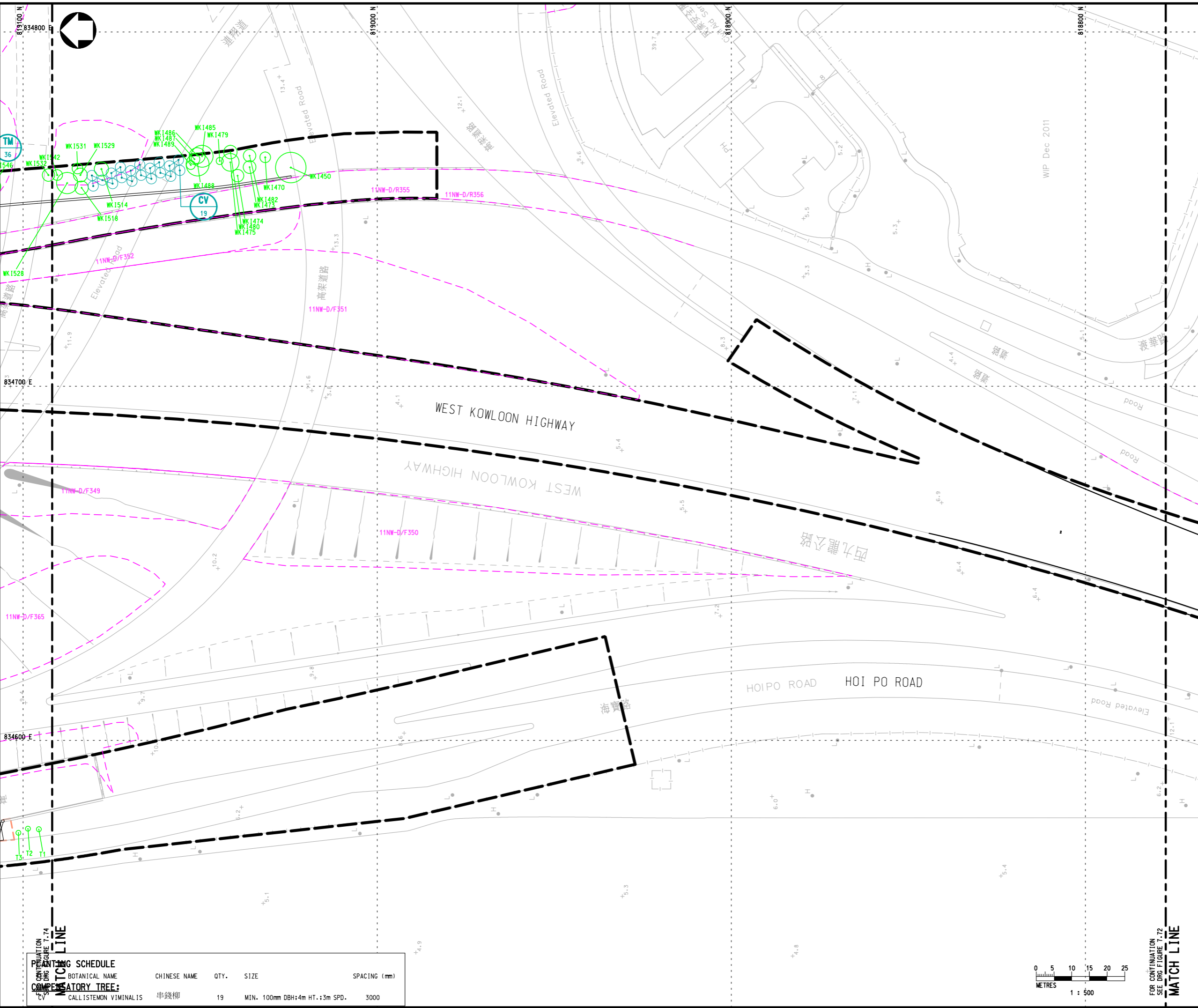


FOR CONTINUATION SEE DRG FIGURE 7.71  
**MATCH LINE**

FOR CONTINUATION SEE DRG FIGURE 7.73  
**MATCH LINE**



Printed by : 15/8/2013  
 Filename : X:\2512043 (HKG-HYD West KLN)\CADD\DRAWING\REPORT\20130726 (EIA REPORT)\PBA-CE44-TL-Fig 7.73.dgn



LOCATION PLAN

NOTE :  
 1. EXISTING PLANTERS / PLANTING STRIPS AFFECTED BY THE WORKS SHOULD BE REINSTATED TO THE CONDITION BEFORE BEING AFFECTED AND TO THE SATISFACTION OF THE ENGINEER

- LEGEND :
- PROPOSED WORKS SITE
  - RETAINED TREE (CM3)
  - PROPOSED LOCATION FOR TRANSPLANTED TREE (CM4)
  - PROPOSED LOCATION FOR COMPENSATORY TREE (OM1)
  - Hyd SIMAR SLOPE / FEATURE
  - HYDROSEEDING

Rev	Description	By	Date

Consultant  
**PARSONS BRINCKERHOFF**

Project title  
 AGREEMENT NO. CE 44/2011 (HY)  
 PROPOSED ROAD IMPROVEMENT WORKS IN WEST KOWLOON RECLAMATION DEVELOPMENT - PHASE 1 INVESTIGATION, DESIGN AND CONSTRUCTION

Drawing title  
**TREE AND LANDSCAPE PLAN**  
**SHEET 3 OF 8**

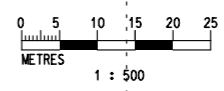
Drawing no. <b>FIGURE 7.73</b>		Rev. -	
Drawn CAD	Date -	Checked -	Approved -
Scale 1:500 (A1)	Status <b>PRELIMINARY DESIGN</b>		

© COPYRIGHT RESERVED

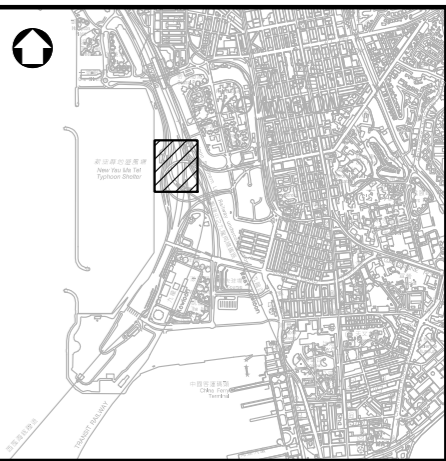
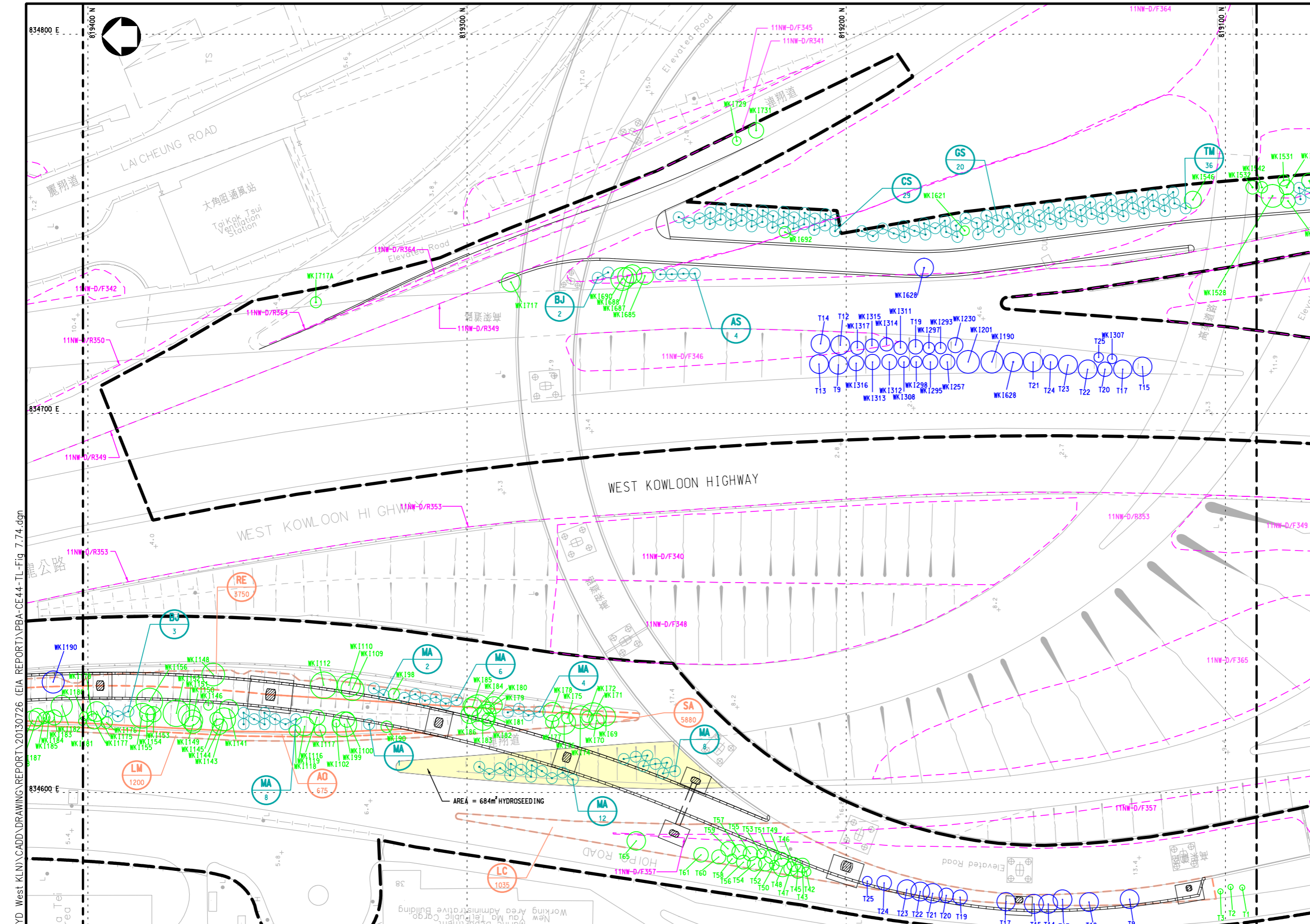
路政署  
 HIGHWAYS DEPARTMENT  
 主要工程管理處  
 MAJOR WORKS PROJECT MANAGEMENT OFFICE

PLANTING SCHEDULE

BOTANICAL NAME	CHINESE NAME	QTY.	SIZE	SPACING (mm)
CALLISTEMON VIMINALIS	串錢柳	19	MIN. 100mm DBH; 4m HT.; 3m SPD.	3000



FOR CONTINUATION  
 SEE DRG FIGURE 7.72  
**MATCH LINE**



LOCATION PLAN

**NOTE :**  
 1. EXISTING PLANTERS / PLANTING STRIPS AFFECTED BY THE WORKS SHOULD BE REINSTATED TO THE CONDITION BEFORE BEING AFFECTED AND TO THE SATISFACTION OF THE ENGINEER

- LEGEND :**
- PROPOSED WORKS SITE
  - RETAINED TREE (CM3)
  - PROPOSED LOCATION FOR TRANSPLANTED TREE (CM4)
  - PROPOSED LOCATION FOR COMPENSATORY TREE (OM1)
  - HyD SIMAR SLOPE / FEATURE
  - HYDROSEEDING
  - PROPOSED CLIMBERS ON PIER (OM2)

Rev	Description	By	Date

Consultant  
**PARSONS BRINCKERHOFF**

Project title  
 AGREEMENT NO. CE 44/2011 (HY)  
 PROPOSED ROAD IMPROVEMENT WORKS IN WEST KOWLOON RECLAMATION DEVELOPMENT - PHASE 1 INVESTIGATION, DESIGN AND CONSTRUCTION

Drawing title  
**TREE AND LANDSCAPE PLAN SHEET 4 OF 8**

Drawing no. **FIGURE 7.74**

Drawn	Date	Checked	Approved
CAD	-	-	-
Scale	1:500 (A1)	Status	PRELIMINARY DESIGN

© COPYRIGHT RESERVED  
 路政署  
 HIGHWAYS DEPARTMENT  
 主要工程管理处  
 MAJOR WORKS PROJECT MANAGEMENT OFFICE

**SCHEDULE FOR TREES TO BE TRANSPLANTED**

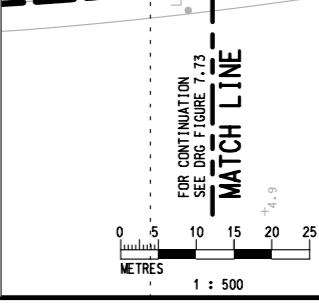
TREE ID No.	TREE SPECIES	CHINESE NAME	DBH (mm)	SIZE	HEIGHT (m)	SPREAD (m)
T19	ROYSTONIA REGIA	大葉欖	280	8	4	
T13	ROYSTONIA REGIA	大葉欖	250	6	4	
T14	ROYSTONIA REGIA	大葉欖	250	6	4	
T15	ROYSTONIA REGIA	大葉欖	240	4	3	
T17	ROYSTONIA REGIA	大葉欖	280	7	3	
T19	ROYSTONIA REGIA	大葉欖	290	8	3	
T20	ARCHONTOPHENIX ALEXANDRAE	假棕櫚	160	6	3	
T21	ROYSTONIA REGIA	大葉欖	300	6	4	
T22	ROYSTONIA REGIA	大葉欖	300	6	4	
T23	ROYSTONIA REGIA	大葉欖	280	6	4	
T24	ARCHONTOPHENIX ALEXANDRAE	假棕櫚	150	6	3	
T25	ARCHONTOPHENIX ALEXANDRAE	假棕櫚	130	5	2	
WK1 190	CELTIS SINENSIS	朴樹	240	7	5	
WK1 201	FICUS MICROCARPA	細葉榕	233	8	6	

**TRANSPLANTED TREES:**

TREE ID No.	TREE SPECIES	CHINESE NAME	DBH (mm)	SIZE	HEIGHT (m)	SPREAD (m)
WK1 230	FICUS MICROCARPA	細葉榕	179	5	5	
WK1 257	FICUS MICROCARPA	細葉榕	190	6	5	
WK1 293	ALSTONIA SCHOLARIS	黑板木	140	4	4	
WK1 295	ALSTONIA SCHOLARIS	黑板木	170	5	4	
WK1 297	ALSTONIA SCHOLARIS	黑板木	150	4	2	
WK1 298	ALSTONIA SCHOLARIS	黑板木	160	5	3	
WK1 307	ALSTONIA SCHOLARIS	黑板木	140	5	3	
WK1 308	ALSTONIA SCHOLARIS	黑板木	140	5	3	
WK1 311	ALSTONIA SCHOLARIS	黑板木	140	5	3	
WK1 312	ALSTONIA SCHOLARIS	黑板木	160	5	3	
WK1 313	ALSTONIA SCHOLARIS	黑板木	170	5	3	
WK1 314	ALSTONIA SCHOLARIS	黑板木	170	5	3	
WK1 315	ALSTONIA SCHOLARIS	黑板木	150	5	3	
WK1 316	ALSTONIA SCHOLARIS	黑板木	150	6	3	
WK1 317	ALSTONIA SCHOLARIS	黑板木	160	4	4	
WK1 628	CELTIS SINENSIS	朴樹	178	6	4	

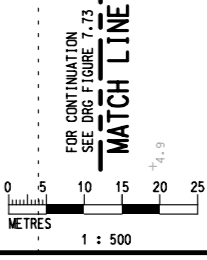
**PLANTING SCHEDULE**

KEY	BOTANICAL NAME	CHINESE NAME	QTY.	SIZE	SPACING (mm)
AS	ALSTONIA SCHOLARIS	黑板木	4	MIN. 100mm DBH+4m HT.+3m SPD.	3000
BJ	BISCHOFIA JAVANICA	秋楓	5	MIN. 100mm DBH+4m HT.+3m SPD.	3000
CS	CASSIA SURATTENSIS	黃槐	29	MIN. 100mm DBH+4m HT.+3m SPD.	3000
GS	GARCINIA SUBELLIPTICA	福木	20	MIN. 100mm DBH+4m HT.+3m SPD.	3000
MA	MELIA AZEDARACH	苦楝	41	MIN. 100mm DBH+4m HT.+3m SPD.	3000
TM	TERMINALIA MANTALY	細葉欖仁	36	MIN. 100mm DBH+4m HT.+3m SPD.	3000
AO	ALGAIA ODORATA	米仔蘭	675	600 x 400	400
LC	LIVISTONA CHINENSIS	蒲葵	1035	800 x 800	1000
LM	LANTANA MONTEVIDENSIS	紫花馬櫻丹	1200	300 x 300	300
SA	SCHEFFLERA ARBORICOLA	鵝掌柴	5880	500 x 500	500
RE	RHAPIS EXCELSA	棕竹	3750	500 x 600	600
PH	PARTHENDICISSUS HIMALAYANA	三葉爬山虎	MIN. 10 SHOOTS PER BAG	700 x 200	500

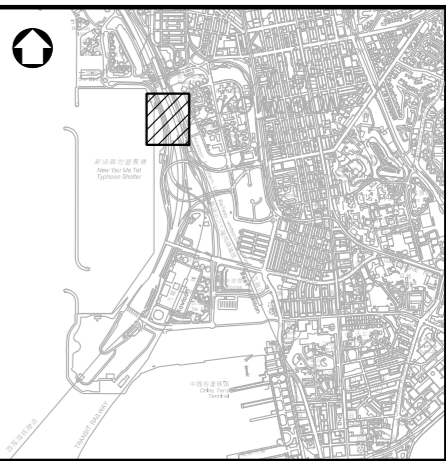
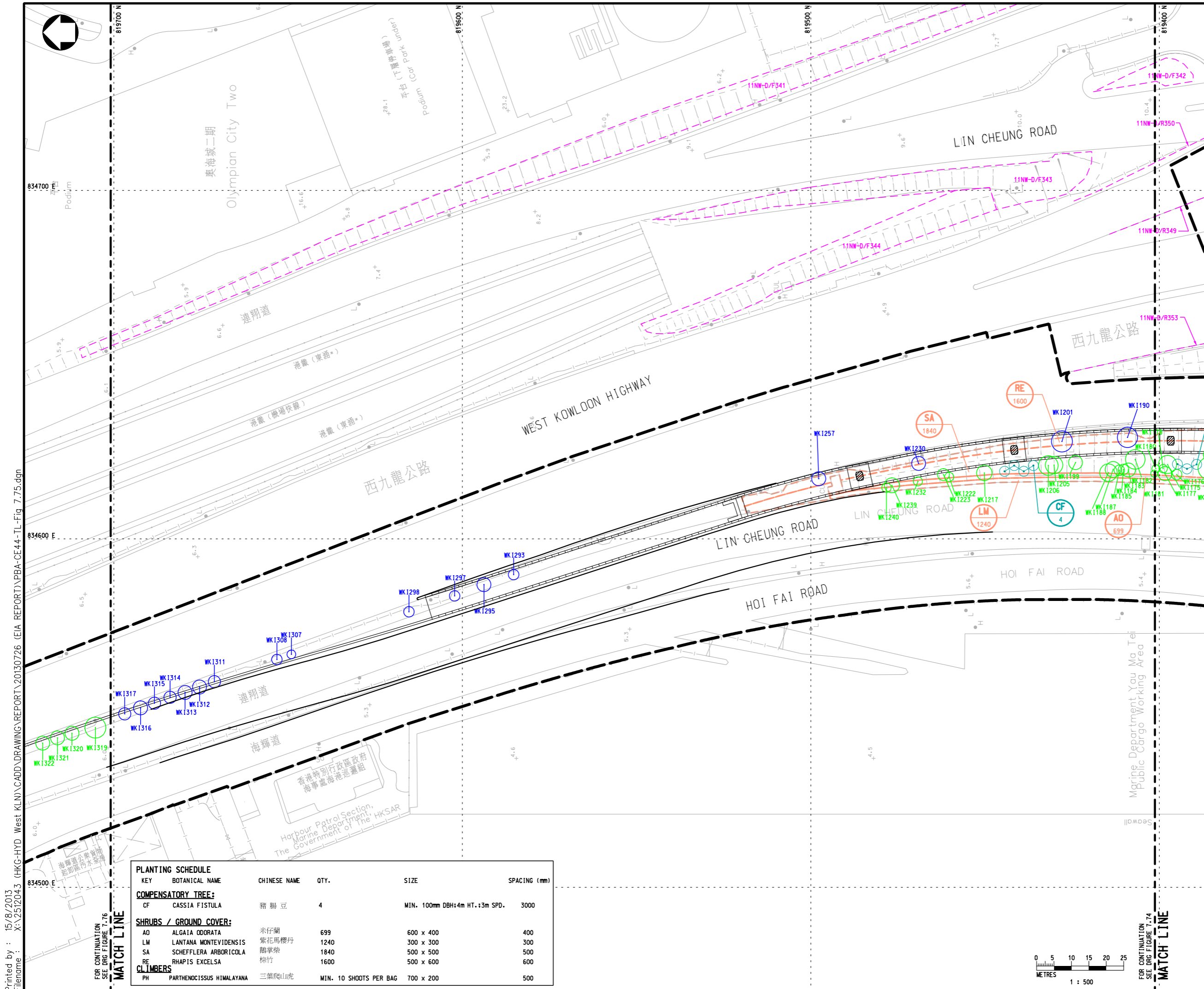


Printed by : 15/8/2013  
 Filename : X:\2512043 (HGK-HYD West KLN)\CADD\DRAWING\REPORT\20130726 (EIA REPORT)\PBA-CE44-TL-Fig 7.74.dgn

Marine Department You Ma Tei  
 FOR CONTINUATION TO SEE FIGURE 7.75  
 MATCH LINE







LOCATION PLAN

**NOTE :**  
 1. EXISTING PLANTERS / PLANTING STRIPS AFFECTED BY THE WORKS SHOULD BE REINSTATED TO THE CONDITION BEFORE BEING AFFECTED AND TO THE SATISFACTION OF THE ENGINEER

- LEGEND :**
- PROPOSED WORKS SITE
  - WK1297 RETAINED TREE (CM3)
  - WK1677 PROPOSED LOCATION FOR TRANSPLANTED TREE (CM4)
  - PROPOSED LOCATION FOR COMPENSATORY TREE (OM1)
  - HyD SIMAR SLOPE / FEATURE
  - PROPOSED CLIMBERS ON PIER (OM2)

Rev	Description	By	Date

Consultant  
**PARSONS BRINCKERHOFF**

Project title  
 AGREEMENT NO. CE 44/2011 (HY)  
 PROPOSED ROAD IMPROVEMENT WORKS IN WEST KOWLOON RECLAMATION DEVELOPMENT - PHASE 1 INVESTIGATION, DESIGN AND CONSTRUCTION

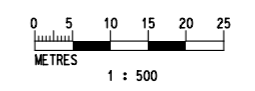
Drawing title  
**TREE AND LANDSCAPE PLAN SHEET 5 OF 8**

Drawing no. <b>FIGURE 7.75</b>		Rev. -	
Drawn CAD	Date	Checked	Approved
Scale 1:500 (A1)	Status <b>PRELIMINARY DESIGN</b>		

© COPYRIGHT RESERVED

路政署  
**HIGHWAYS DEPARTMENT**  
 主要工程管理处  
 MAJOR WORKS PROJECT MANAGEMENT OFFICE

KEY	BOTANICAL NAME	CHINESE NAME	QTY.	SIZE	SPACING (mm)
<b>COMPENSATORY TREE:</b>					
CF	CASSIA FISTULA	豬腸豆	4	MIN. 100mm DBH; 4m HT. +3m SPD.	3000
<b>SHRUBS / GROUND COVER:</b>					
AD	ALGATA ODRATA	米仔蘭	699	600 x 400	400
LM	LANтана MONTEVIDENSIS	紫花馬櫻丹	1240	300 x 300	300
SA	SCHEFFLERA ARBORICOLA	鵝掌楸	1840	500 x 500	500
RE	RHAPIS EXCELSA	棕竹	1600	500 x 600	600
<b>CLIMBERS</b>					
PH	PARthenocissus HIMALAYANA	三葉爬山虎	MIN. 10 SHOOTS PER BAG	700 x 200	500

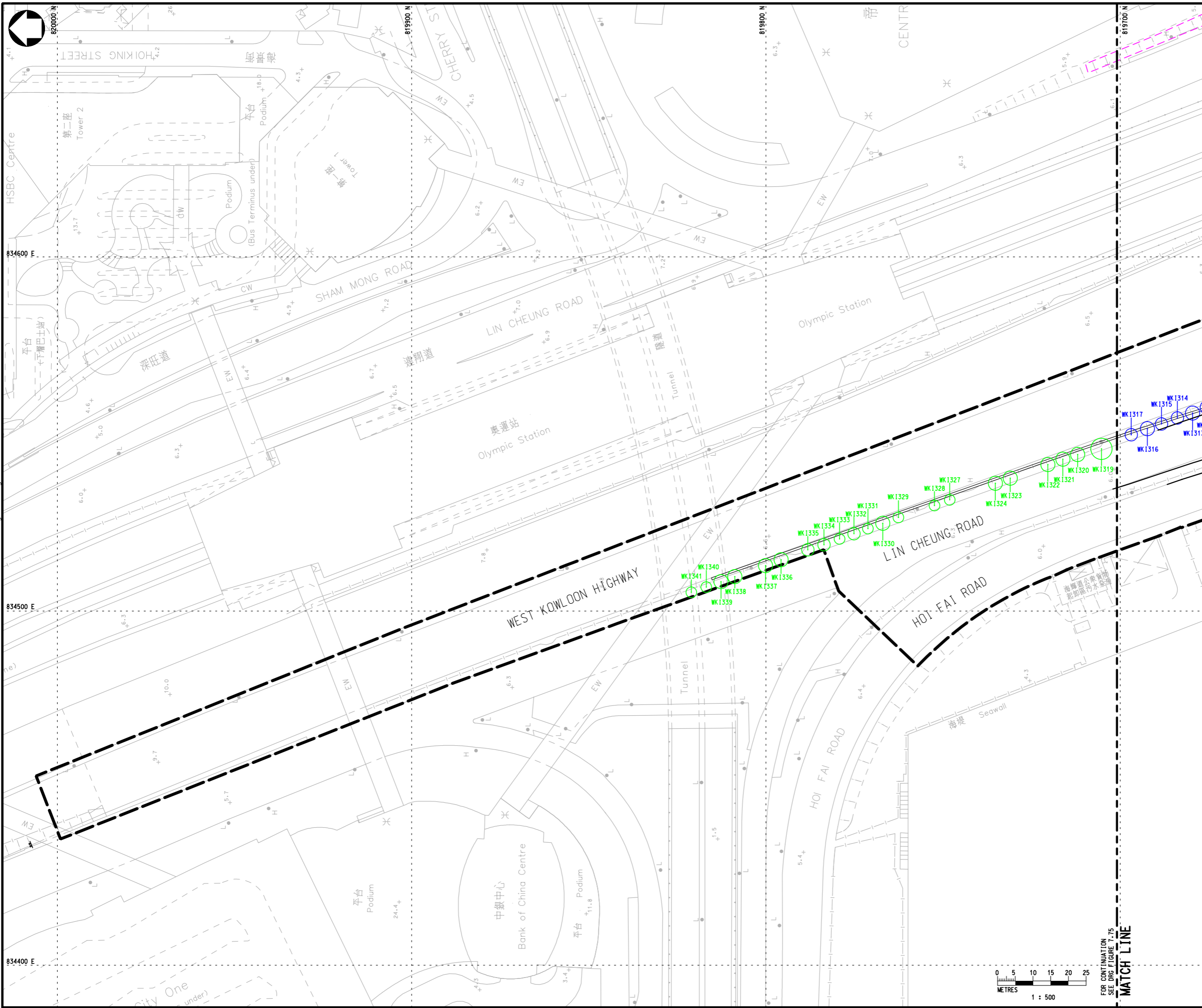


Printed by : 15/8/2013  
 Filename : X:\2512043 (HKG-HYD West KLN)\CADD\DRAWING\REPORT\20130726 (EIA REPORT)\PBA-CE44-TL-Fig 7.75.dgn

FOR CONTINUATION  
 SEE DRG FIGURE 7.76  
**MATCH LINE**

FOR CONTINUATION  
 SEE DRG FIGURE 7.74  
**MATCH LINE**

Printed by : 15/8/2013  
 Filename : X:\2512043 (HKG-HYD West KLN)\CADD\DRAWING\REPORT\20130726 (EIA REPORT)\PBA-CE44-TL-Fig 7.76.dgn



LOCATION PLAN

NOTE :  
 1. EXISTING PLANTERS / PLANTING STRIPS AFFECTED BY THE WORKS SHOULD BE REINSTATED TO THE CONDITION BEFORE BEING AFFECTED AND TO THE SATISFACTION OF THE ENGINEER

- LEGEND :
- PROPOSED WORKS SITE
  - RETAINED TREE (CM3)
  - PROPOSED LOCATION FOR TRANSPLANTED TREE (CM4)
  - PROPOSED LOCATION FOR COMPENSATORY TREE (OM1)
  - HyD SIMAR SLOPE / FEATURE

Rev	Description	By	Date

Consultant  
**PARSONS BRINCKERHOFF**

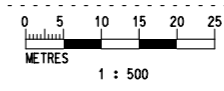
Project title  
 AGREEMENT NO. CE 44/2011 (HY)  
 PROPOSED ROAD IMPROVEMENT WORKS IN WEST KOWLOON RECLAMATION DEVELOPMENT - PHASE 1 INVESTIGATION, DESIGN AND CONSTRUCTION

Drawing title  
**TREE AND LANDSCAPE PLAN**  
**SHEET 6 OF 8**

Drawing no. <b>FIGURE 7.76</b>		Rev. -	
Drawn CAD	Date	Checked	Approved
Scale 1:500 (A1)	Status <b>PRELIMINARY DESIGN</b>		

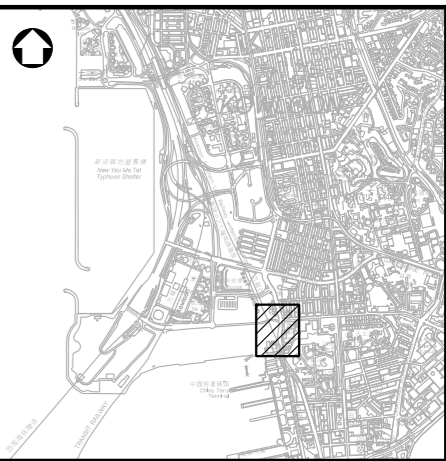
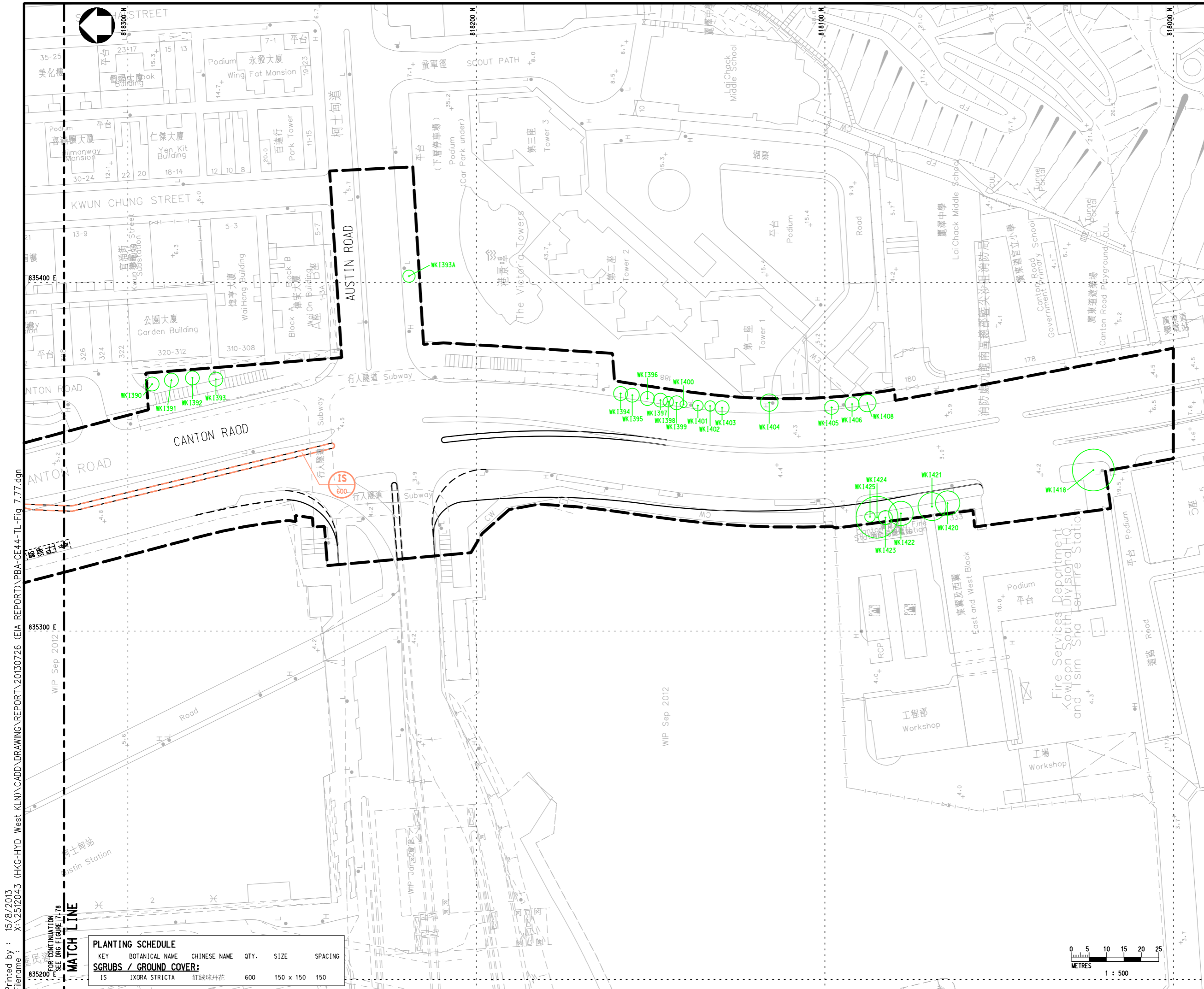
© COPYRIGHT RESERVED

路政署  
 HIGHWAYS DEPARTMENT  
 主要工程管理處  
 MAJOR WORKS PROJECT MANAGEMENT OFFICE



FOR CONTINUATION SEE DRG FIGURE 7.75  
**MATCH LINE**





LOCATION PLAN

**NOTE :**  
 1. EXISTING PLANTERS / PLANTING STRIPS AFFECTED BY THE WORKS SHOULD BE REINSTATED TO THE CONDITION BEFORE BEING AFFECTED AND TO THE SATISFACTION OF THE ENGINEER

- LEGEND :**
- PROPOSED WORKS SITE
  - WK1297 RETAINED TREE (CM3)
  - WK1677 PROPOSED LOCATION FOR TRANSPLANTED TREE (CM4)
  - PROPOSED LOCATION FOR COMPENSATORY TREE (CM1)
  - Hyd SIMAR SLOPE / FEATURE

Rev	Description	By	Date

Consultant  
**PARSONS BRINCKERHOFF**

Project title  
 AGREEMENT NO. CE 44/2011 (HY)  
 PROPOSED ROAD IMPROVEMENT WORKS IN WEST KOWLOON RECLAMATION DEVELOPMENT - PHASE 1 INVESTIGATION, DESIGN AND CONSTRUCTION

Drawing title  
**TREE AND LANDSCAPE PLAN SHEET 7 OF 8**

Drawing no. <b>FIGURE 7.77</b>		Rev. -	
Drawn CAD	Date -	Checked -	Approved -
Scale 1:500 (A1)	Status <b>PRELIMINARY DESIGN</b>		

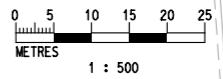
© COPYRIGHT RESERVED

路政署  
 HIGHWAYS DEPARTMENT  
 主要工程管理處  
 MAJOR WORKS PROJECT MANAGEMENT OFFICE

**PLANTING SCHEDULE**

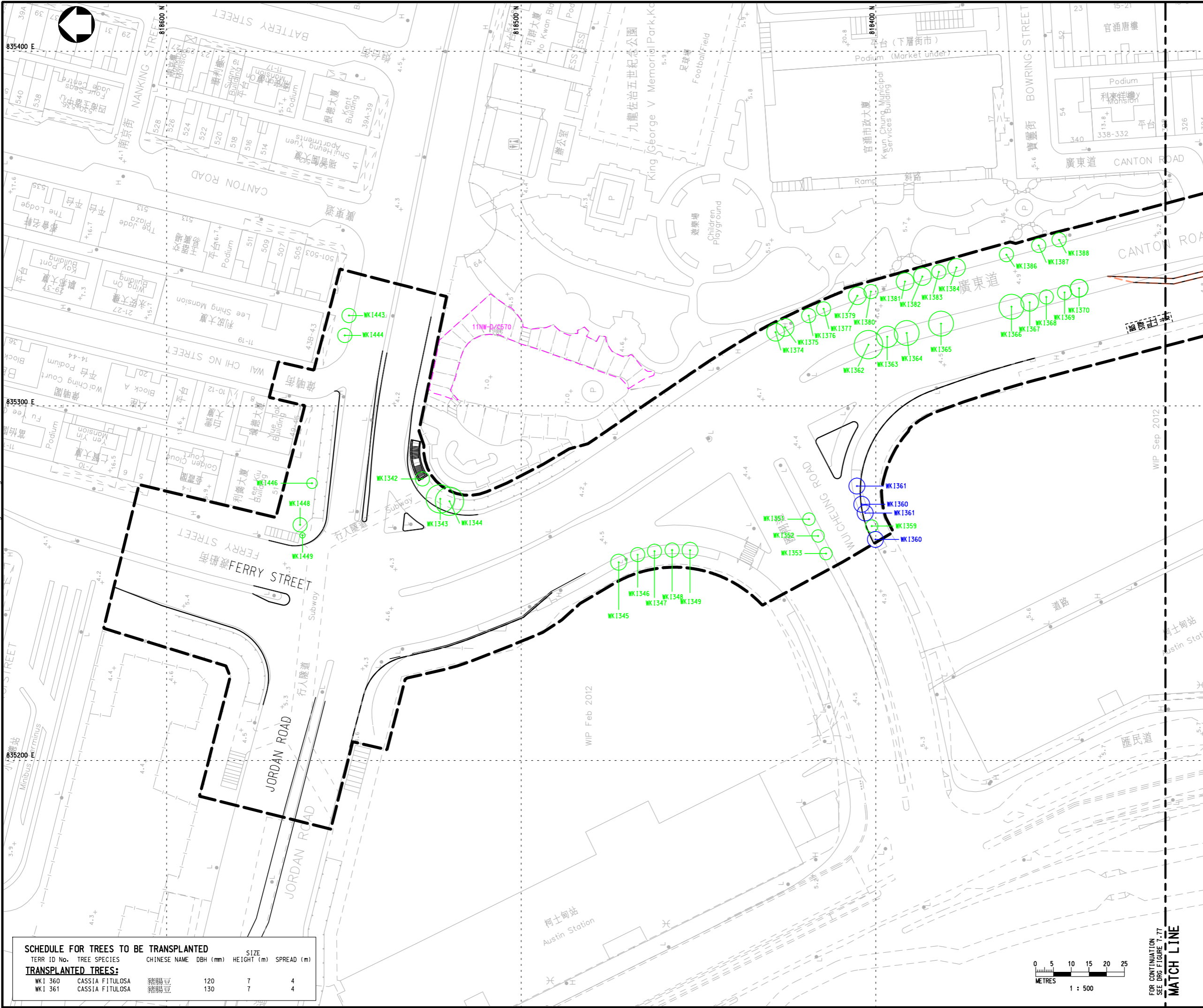
KEY	BOTANICAL NAME	CHINESE NAME	QTY.	SIZE	SPACING
IS	IXORA STRICTA	紅絨球丹花	600	150 x 150	150

SGRUBS / GROUND COVER:



Printed by : 15/8/2013  
 Filename : X:\2512043 (HKG-HYD West KLN)\CADD\DRAWING\REPORT\20130726 (EIA REPORT)\PBA-CE44-TL-Fig 7.77.dgn  
 WIP Sep 2012

OR CONTINUATION  
 SEE DRG FIGURE 7.78  
 MATCH LINE



LOCATION PLAN

**NOTE :**  
 1. EXISTING PLANTERS / PLANTING STRIPS AFFECTED BY THE WORKS SHOULD BE REINSTATED TO THE CONDITION BEFORE BEING AFFECTED AND TO THE SATISFACTION OF THE ENGINEER

- LEGEND :**
- PROPOSED WORKS SITE
  - WK1297 RETAINED TREE (CM3)
  - WK1677 PROPOSED LOCATION FOR TRANSPLANTED TREE (CM4)
  - PROPOSED LOCATION FOR COMPENSATORY TREE (OM1)
  - HyD SIMAR SLOPE / FEATURE

Rev	Description	By	Date

Consultant  
**PARSONS BRINCKERHOFF**

Project title  
 AGREEMENT NO. CE 44/2011 (HY)  
 PROPOSED ROAD IMPROVEMENT WORKS IN WEST KOWLOON RECLAMATION DEVELOPMENT - PHASE 1 INVESTIGATION, DESIGN AND CONSTRUCTION

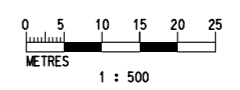
Drawing title  
**TREE AND LANDSCAPE PLAN**  
 SHEET 8 OF 8

Drawing no. <b>FIGURE 7.78</b>		Rev. -	
Drawn CAD	Date -	Checked -	Approved -
Scale 1:500 (A1)		Status <b>PRELIMINARY DESIGN</b>	

© COPYRIGHT RESERVED

**SCHEDULE FOR TREES TO BE TRANSPLANTED**

TERR ID No.	TREE SPECIES	CHINESE NAME	DBH (mm)	SIZE HEIGHT (m)	SPREAD (m)
WKI 360	CASSIA FITULOSA	豬腸豆	120	7	4
WKI 361	CASSIA FITULOSA	豬腸豆	130	7	4



FOR CONTINUATION SEE DRG FIGURE 7.77

MATCH LINE

路政署  
 HIGHWAYS DEPARTMENT  
 主要工程處  
 MAJOR WORKS PROJECT MANAGEMENT OFFICE