


Notes

Key to symbols

- - - 500m ASSESSMENT AREA
- - - PROJECT AREA
- AQO CRITERIA (500 µg/m³)

Reference drawings

P1	MAY 13	MING	FIRST ISSUE	MCD	AFK
Rev	Date	Drawn	Description	Ch'k'd	App'd



20/F Two Landmark East
100 How Ming Street
Kowloon
Hong Kong
T +852 2828 8757
F +852 2827 1823
www.mottmac.com.hk

Client



Environmental Protection Department
The Government of the Hong Kong
Special Administrative Region

Project

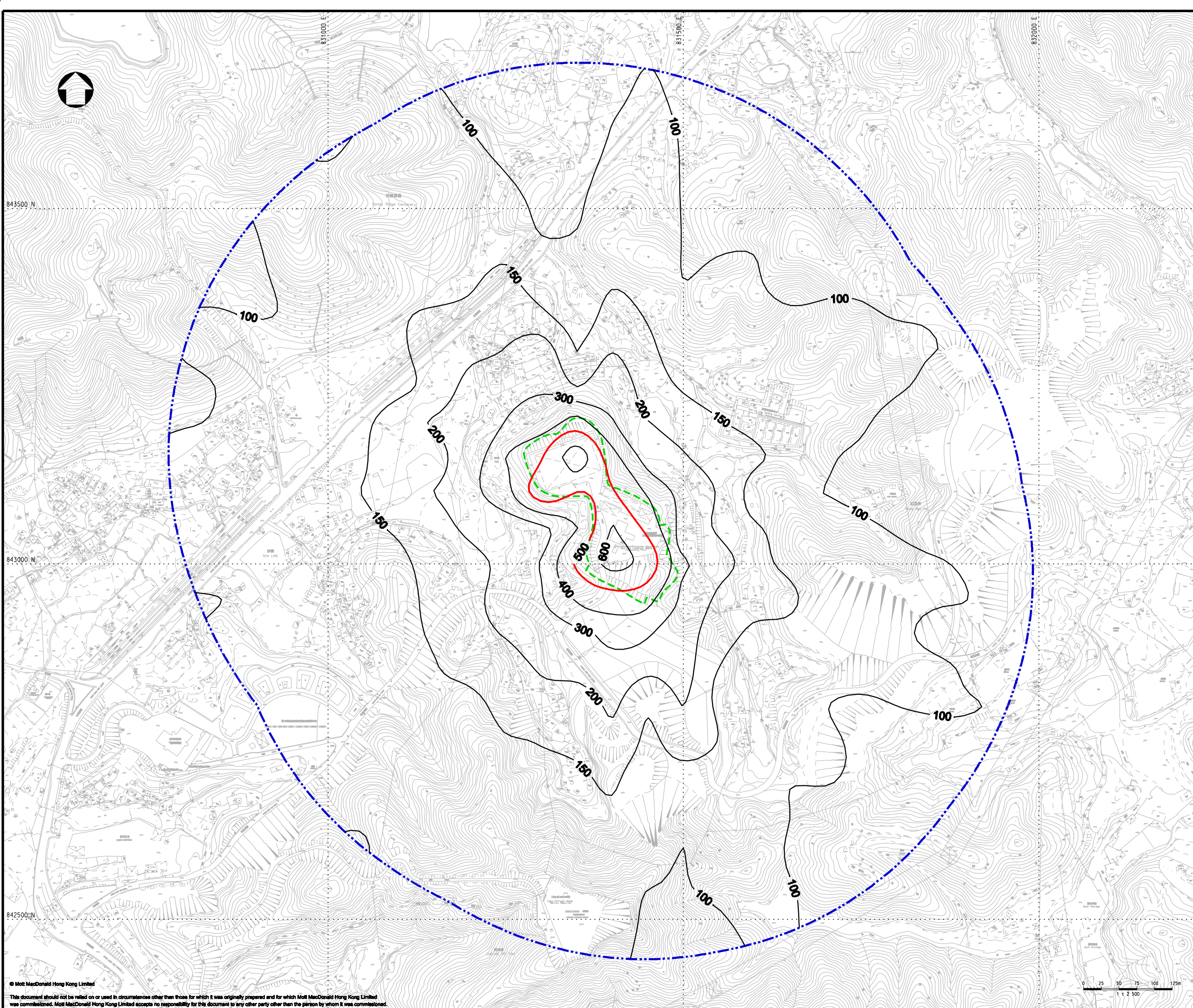
**AGREEMENT NO. CE34/2011(EP)
DEVELOPMENT OF ORGANIC WASTE
TREATMENT FACILITIES PHASE 2 -
FEASIBILITY STUDY**

Title

**CUMULATIVE RESULTS - CONTOUR OF
HOURLY TSP CONCENTRATION
AT 1.5m ABOVE GROUND DURING
CONSTRUCTION PHASE (UNMITIGATED)**

Designed	MCD	Eng check	AT
Drawn	MING	Coordination	AT
Dwg check	MCD	Approved	AFK
Scale at A1	Status	Rev	
1:2500	PRE	P1	

Drawing Number **FIGURE 3.4a**



Notes

Key to symbols

- - - 500m ASSESSMENT AREA
- - - PROJECT AREA
- AQO CRITERIA (500 µg/m³)

Reference drawings

--	--	--	--	--	--

P1	MAY 13	MING	FIRST ISSUE	MCD	AFK
Rev	Date	Drawn	Description	Ch'k'd	App'd



20/F Two Landmark East
100 How Ming Street
Kowloon
Hong Kong
T +852 2828 8757
F +852 2827 1823
www.mottmac.com.hk

Client



Environmental Protection Department
The Government of the Hong Kong
Special Administrative Region

Project

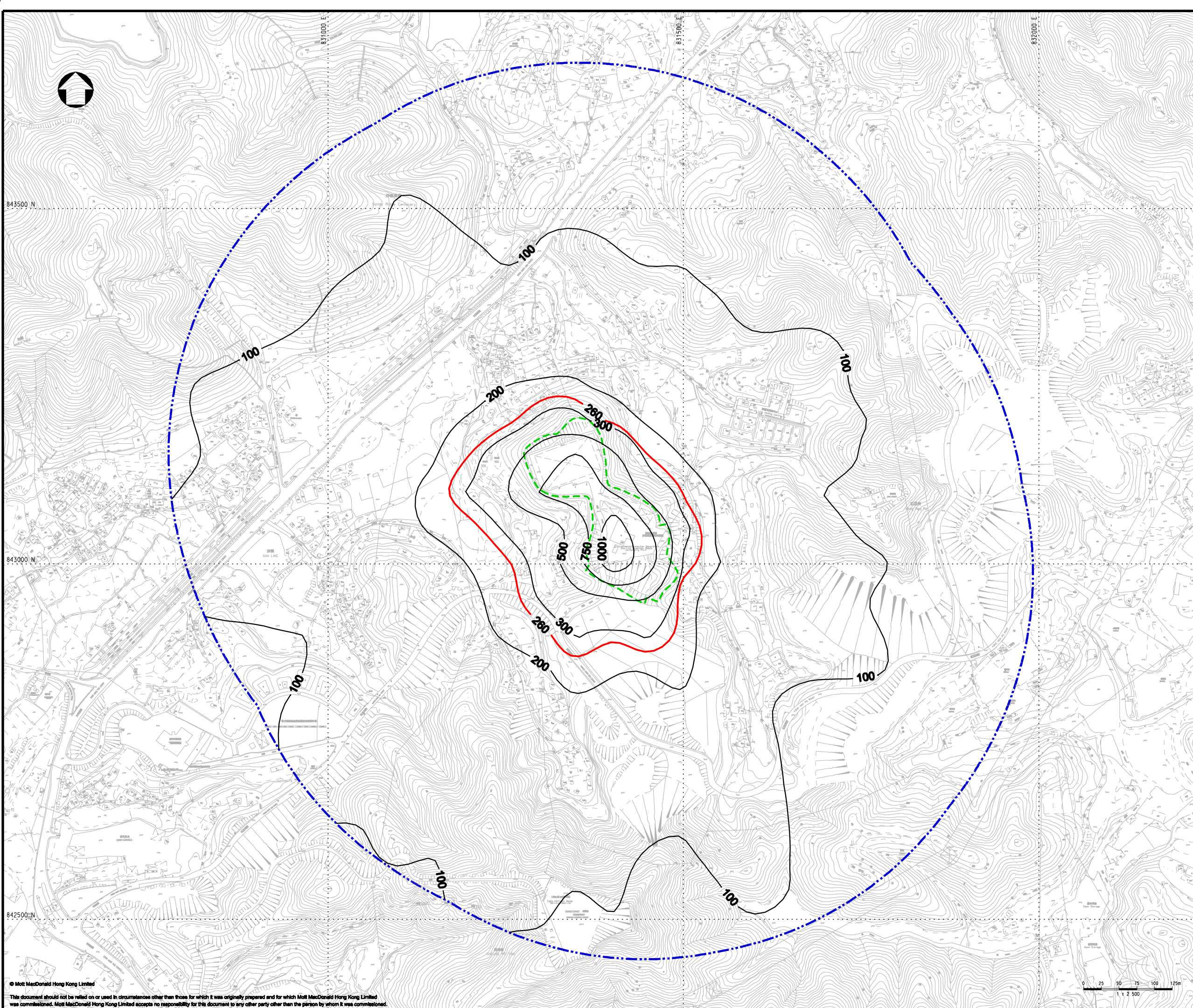
**AGREEMENT NO. CE34/2011(EP)
DEVELOPMENT OF ORGANIC WASTE
TREATMENT FACILITIES PHASE 2 -
FEASIBILITY STUDY**

Title

**CUMULATIVE RESULTS - CONTOUR OF
HOURLY TSP CONCENTRATION
AT 1.5m ABOVE GROUND DURING
CONSTRUCTION PHASE (MITIGATED)**

Designed	MCD	Eng check	AT
Drawn	MING	Coordination	AT
Dwg check	MCD	Approved	AFK
Scale at A1	Status	Rev	
1:2500	PRE	P1	

Drawing Number **FIGURE 3.4b**




Notes

Key to symbols

- - - 500m ASSESSMENT AREA
- - - PROJECT AREA
- AQO CRITERIA ($260 \mu\text{g}/\text{m}^3$)

Reference drawings

Rev	Date	Drawn	Description	Ch'k'd	App'd
P1	MAY 13	MING	FIRST ISSUE	MCD	AFK



20/F Two Landmark East
100 How Ming Street
Kowloon
Hong Kong
T +852 2828 8757
F +852 2827 1823
www.mottmac.com.hk

Client



Environmental Protection Department
The Government of the Hong Kong
Special Administrative Region

Project

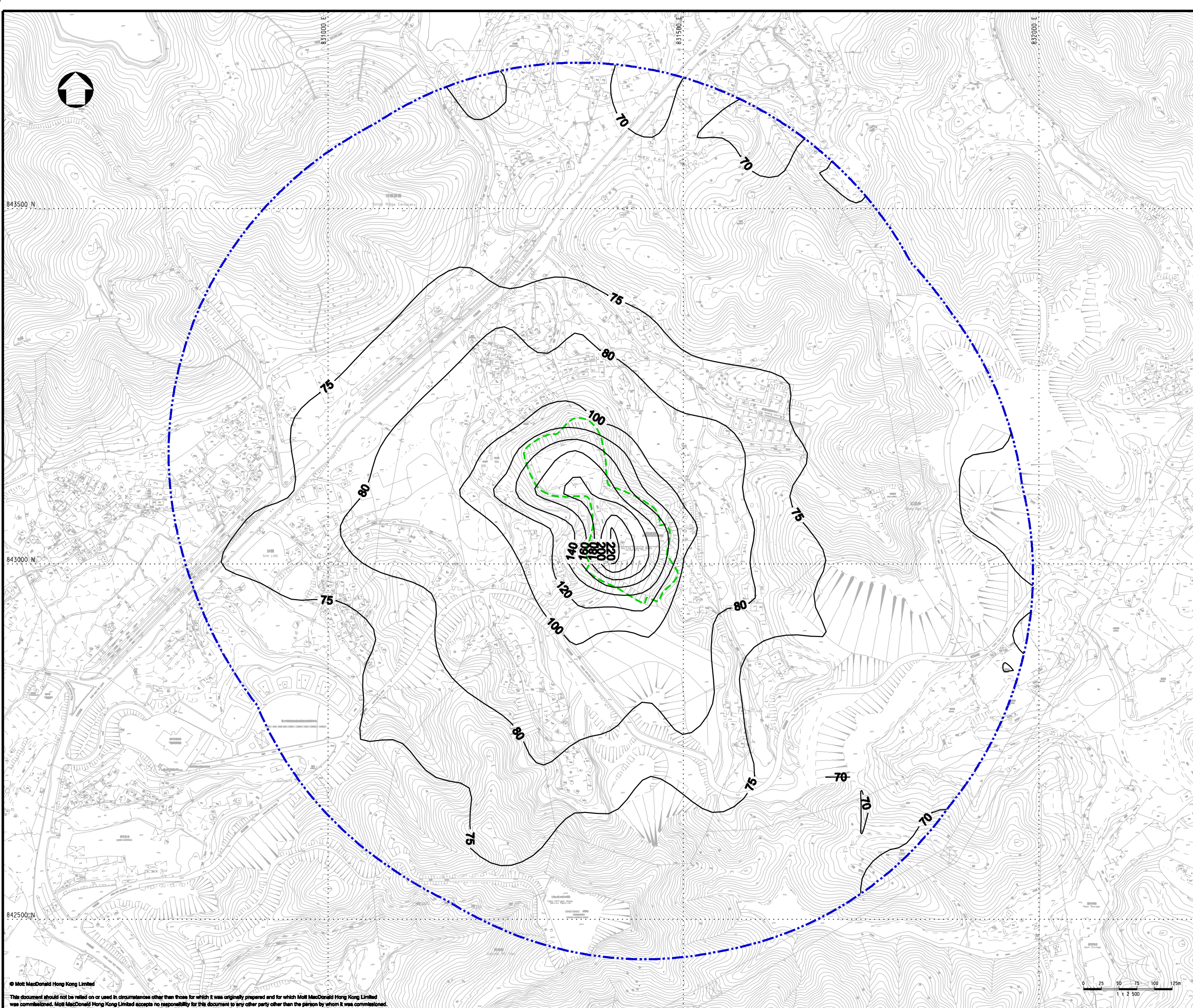
**AGREEMENT NO. CE34/2011(EP)
DEVELOPMENT OF ORGANIC WASTE
TREATMENT FACILITIES PHASE 2 -
FEASIBILITY STUDY**

Title

**CUMULATIVE RESULTS - CONTOUR OF
DAILY TSP CONCENTRATION
AT 1.5m ABOVE GROUND DURING
CONSTRUCTION PHASE (UNMITIGATED)**

Designed	MCD	Eng check	AT
Drawn	MING	Coordination	AT
Dwg check	MCD	Approved	AFK
Scale at A1	Status	Rev	
1:2500	PRE	P1	

Drawing Number **FIGURE 3.4c**




Notes

Key to symbols

- - - 500m ASSESSMENT AREA
- - - PROJECT AREA
- - - A00 CRITERIA ($260 \mu\text{g}/\text{m}^3$)

Reference drawings

Rev	Date	Drawn	Description	Ch'k'd	App'd
P1	MAY 13	MING	FIRST ISSUE	MCD	AFK



20/F Two Landmark East
100 How Ming Street
Kowloon, Kowloon
Hong Kong
T +852 2828 8757
F +852 2827 1823
www.mottmac.com.hk

Client



Environmental Protection Department
The Government of the Hong Kong
Special Administrative Region

Project

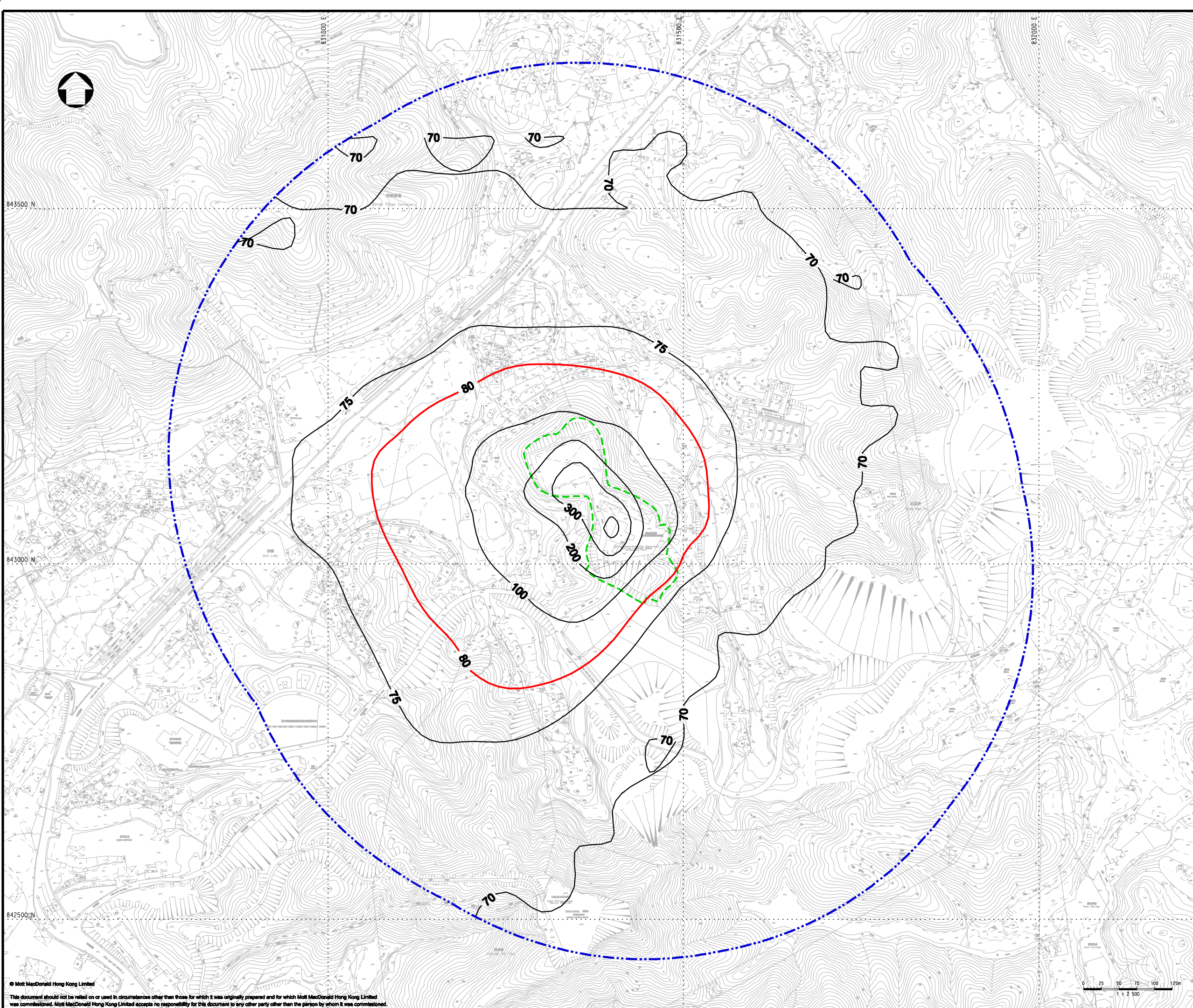
**AGREEMENT NO. CE34/2011(EP)
DEVELOPMENT OF ORGANIC WASTE
TREATMENT FACILITIES PHASE 2 -
FEASIBILITY STUDY**

Title

**CUMULATIVE RESULTS - CONTOUR OF
DAILY TSP CONCENTRATION
AT 1.5m ABOVE GROUND DURING
CONSTRUCTION PHASE (MITIGATED)**

Designed	MCD	Eng check	AT
Drawn	MING	Coordination	AT
Dwg check	MCD	Approved	AFK
Scale at A1	Status	Rev	
1:2500	PRE	P1	

Drawing Number **FIGURE 3.4d**




Notes

Key to symbols

- - - 500m ASSESSMENT AREA
- - - PROJECT AREA
- AQO CRITERIA (80µg/m³)

Reference drawings

Rev	Date	Drawn	Description	Ch'k'd	App'd
P1	MAY 13	MING	FIRST ISSUE	MCD	AFK



20/F Two Landmark East
100 How Ming Street
Kowloon
Hong Kong
T +852 2828 8757
F +852 2827 1823
www.mottmac.com.hk

Client



Environmental Protection Department
The Government of the Hong Kong
Special Administrative Region

Project

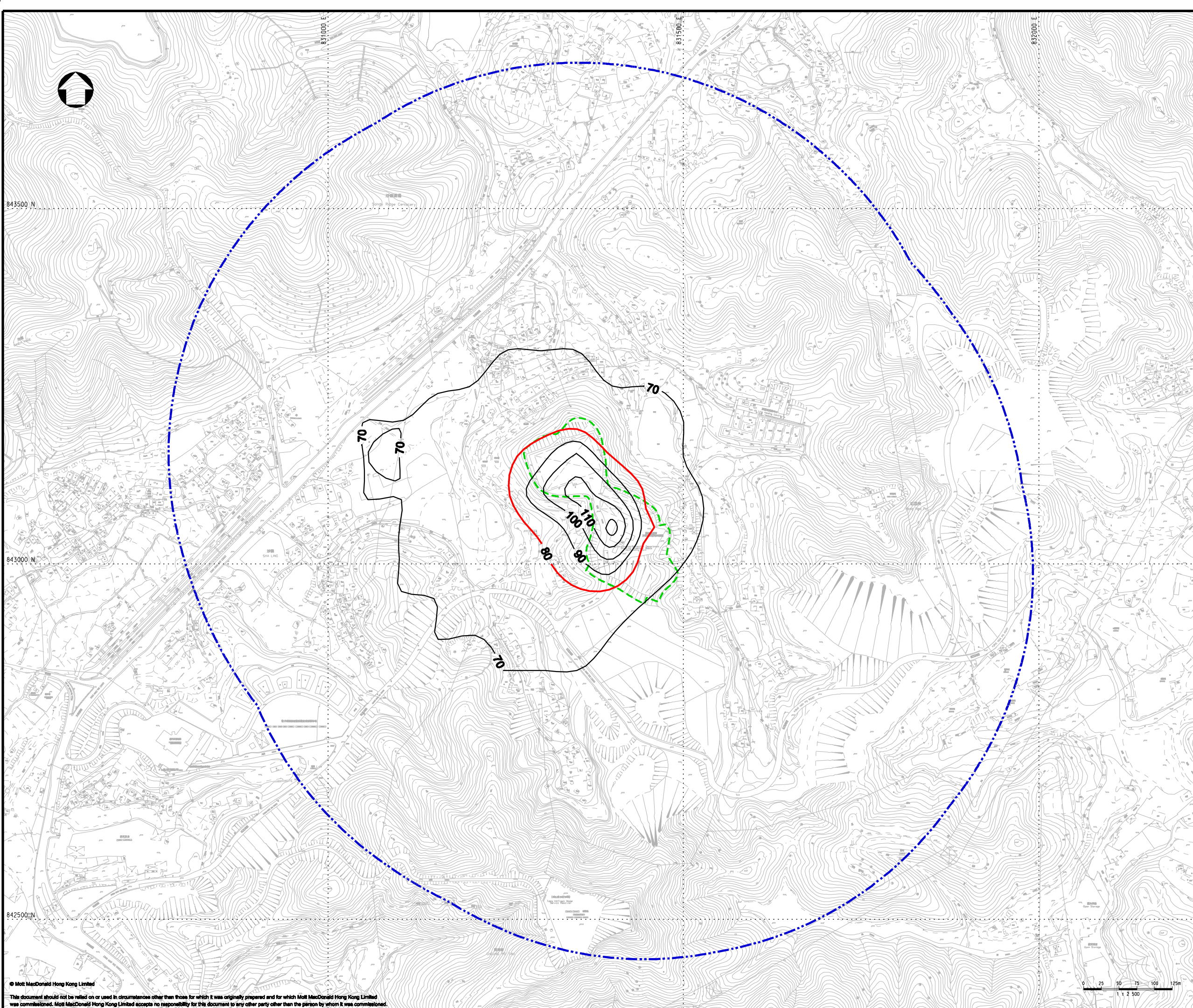
**AGREEMENT NO. CE34/2011(EP)
DEVELOPMENT OF ORGANIC WASTE
TREATMENT FACILITIES PHASE 2 -
FEASIBILITY STUDY**

Title

**CUMULATIVE RESULTS - CONTOUR OF
ANNUAL TSP CONCENTRATION
AT 1.5m ABOVE GROUND DURING
CONSTRUCTION PHASE (UNMITIGATED)**

Designed	MCD	Eng check	AT
Drawn	MING	Coordination	AT
Dwg check	MCD	Approved	AFK
Scale at A1	Status	Rev	
1:2500	PRE	P1	

Drawing Number **FIGURE 3.4e**




Notes

Key to symbols

- - - - 500m ASSESSMENT AREA
- - - - PROJECT AREA
- - - - AQO CRITERIA ($80\mu\text{g}/\text{m}^3$)

Reference drawings

Rev	Date	Drawn	Description	Ch'k'd	App'd
P1	MAY 13	MING	FIRST ISSUE	MCD	AFK



20/F Two Landmark East
100 How Ming Street
Kowloon, Hong Kong
T +852 2828 8757
F +852 2827 1823
www.mottmac.com.hk

Client

Environmental Protection Department
 The Government of the Hong Kong
 Special Administrative Region

Project
AGREEMENT NO. CE34/2011(EP)
DEVELOPMENT OF ORGANIC WASTE
TREATMENT FACILITIES PHASE 2 -
FEASIBILITY STUDY

Title
CUMULATIVE RESULTS - CONTOUR OF
ANNUAL TSP CONCENTRATION
AT 1.5m ABOVE GROUND DURING
CONSTRUCTION PHASE (MITIGATED)

Designed	MCD	Eng check	AT
Drawn	MING	Coordination	AT
Dwg check	MCD	Approved	AFK
Scale at A1	1:2500	Status	PRE
Drawing Number	FIGURE 3.4f	Rev	P1