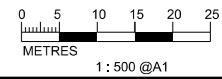


KEY PLAN SCALE : N.T.S.

- LEGEND AND ABBREVIATION:
- Proposed Sewer
  - Proposed Manhole
  - Proposed Tapping Pipe (subject to consultation with owners of houses with topographical problem)
  - Existing Dry Weather Flow Interceptor to be Modified
  - Existing Dry Weather Flow Interceptor
  - Watching Brief (frequency 1 in 4 sections)
  - Watching Brief (100% monitoring)
  - Site of Archaeological Interest



PRINTED BY: cheung306 8/12/2013 10:37:20 AM  
 FILENAME: P:\CHINA\UP\orange\_CADD\Project\15\4572\FIGURE\EA\4572-EIA-FIG-10-14.dgn



Agreement No. CE 15/2010 (DS)  
 Upgrading of Cheung Chau and Tai O Sewage Collection, Treatment and Disposal Facilities - Design and Construction  
 Outlying Islands Sewerage Stage 2 -  
 Upgrading of Cheung Chau Sewage Collection, Treatment and Disposal Facilities

Title :	<b>ASSESSMENT OF ARCHAEOLOGICAL POTENTIAL WITHIN PROJECT IN CHEUNG CHAU (SHEET 10 OF 15)</b>		
Date :	August 2013	Figure :	10.14