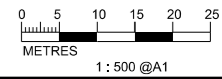


KEY PLAN SCALE: N.T.S.

- LEGEND AND ABBREVIATION:
- Proposed Sewer
  - Proposed Manhole
  - Proposed Tapping Pipe (subject to consultation with owners of houses with topographical problem)
  - Existing Dry Weather Flow Interceptor to be Modified
  - Existing Dry Weather Flow Interceptor
  - Location of Built Heritage Resources
  - Existing Sewer to be Upgraded
  - Proposed Sewer to be Constructed using trenchless method
  - Existing Sewer to be Rehabilitated

MATCH LINE  
FOR CONTINUATION  
SEE DWG. FIGURE 10.28

MATCH LINE  
FOR CONTINUATION  
SEE DWG. FIGURE 10.30



PRINTED BY: cheu8306 8/12/2013 10:37:04 AM  
 FILENAME: P:\CHINA\up\orange\_CADD\Project\154572\Figure\EA\4572-EIA-FIG-10.27.dgn



Agreement No. CE 15/2010 (DS)  
 Upgrading of Cheung Chau and Tai O Sewage Collection, Treatment and Disposal Facilities - Design and Construction  
 Outlying Islands Sewerage Stage 2 -  
 Upgrading of Cheung Chau Sewage Collection, Treatment and Disposal Facilities

Title:	LOCATION OF BUILT HERITAGE RESOURCES (SHEET 8 OF 15)		
Date:	August 2013	Figure:	10.27