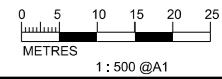


- LEGEND AND ABBREVIATION:**
- Proposed Sewer
 - Proposed Manhole
 - Proposed Tapping Pipe (subject to consultation with owners of houses with topographical problem)
 - Existing Dry Weather Flow Interceptor to be Modified
 - Existing Dry Weather Flow Interceptor
 - CC01 Location of Built Heritage Resources



PRINTED BY: cheu8306 8/12/2013 10:36:59 AM
 FILENAME: P:\CHINA\ drainage CAD\Project\154572\FIGURE\154572-EIA-FIG-10.31.dgn



Agreement No. CE 15/2010 (DS)
 Upgrading of Cheung Chau and Tai O Sewage Collection, Treatment and Disposal Facilities - Design and Construction
Outlying Islands Sewerage Stage 2 -
 Upgrading of Cheung Chau Sewage Collection, Treatment and Disposal Facilities

Title :	LOCATION OF BUILT HERITAGE RESOURCES (SHEET 12 OF 15)		
Date :	August 2013	Figure :	10.31