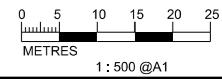


- LEGEND AND ABBREVIATION:**
- Proposed Sewer
 - Proposed Manhole
 - Proposed Tapping Pipe (subject to consultation with owners of houses with topographical problem)
 - Existing Dry Weather Flow Interceptor to be Modified
 - Existing Dry Weather Flow Interceptor
 - CC01 Location of Built Heritage Resources

MATCH LINE FOR CONTINUATION SEE DWG FIGURE 10.31

MATCH LINE FOR CONTINUATION SEE DWG FIGURE 10.34

PRINTED BY: cheuk306 8/12/2013 10:36:57 AM FILENAME: P:\CHINA\Drawings\CADD\Project\15\4572\FIGURE\14\4572-EIA-FIG-10.33.dgn



Agreement No. CE 15/2010 (DS)
 Upgrading of Cheung Chau and Tai O Sewage Collection, Treatment and Disposal Facilities - Design and Construction
Outlying Islands Sewerage Stage 2 -
 Upgrading of Cheung Chau Sewage Collection, Treatment and Disposal Facilities

Title :	LOCATION OF BUILT HERITAGE RESOURCES (SHEET 14 OF 15)		
Date :	August 2013	Figure :	10.33