

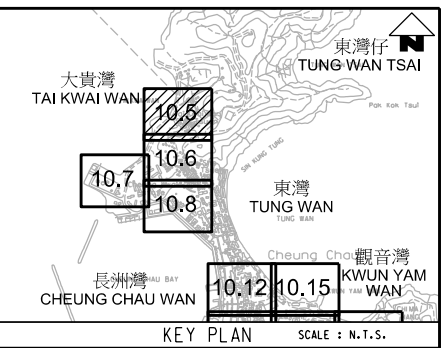
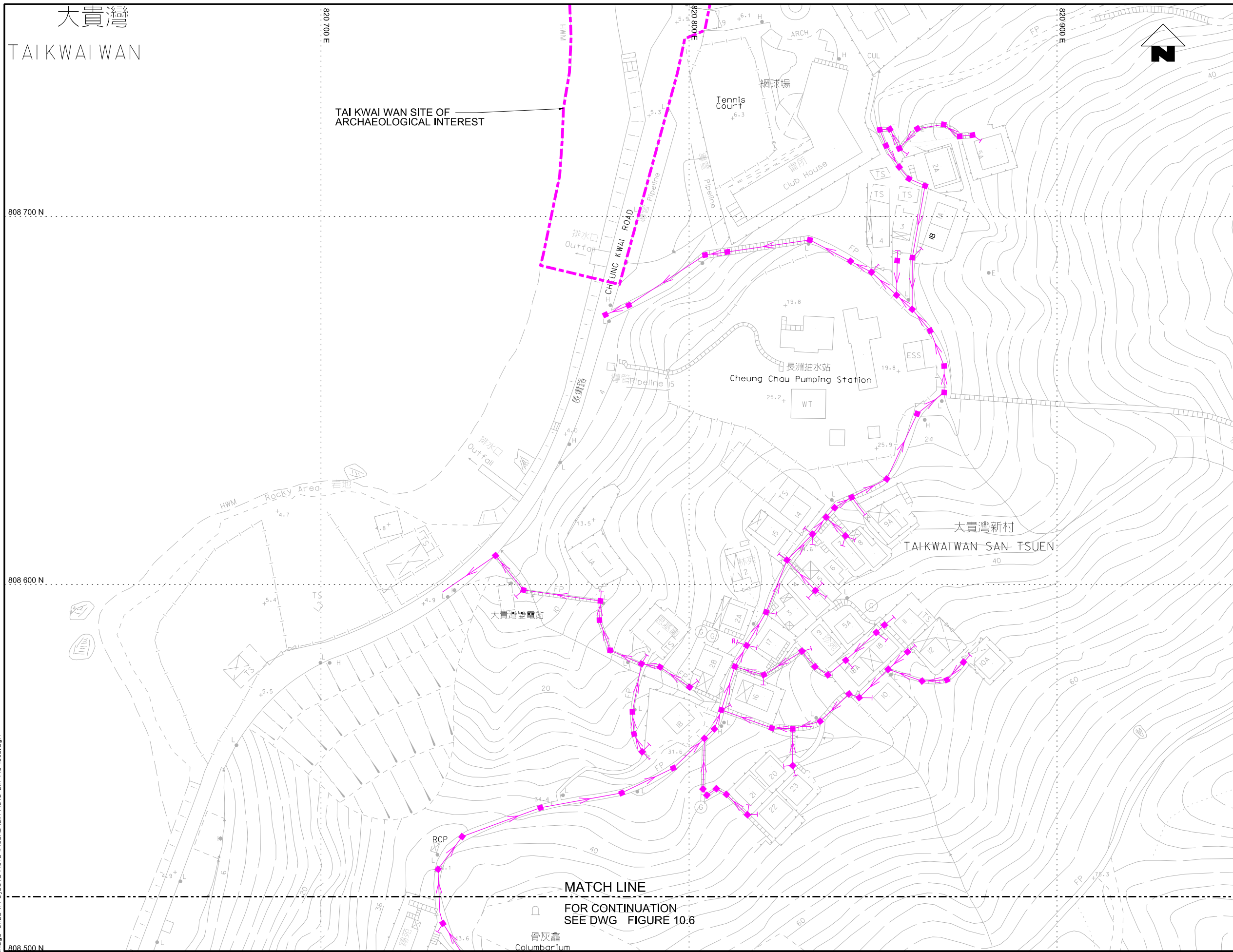
大貴灣
TAI KWAI WAN

808 700 N

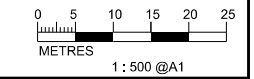
808 600 N

808 500 N

TAI KWAI WAN SITE OF
ARCHAEOLOGICAL INTEREST



- LEGEND AND ABBREVIATION:
- Proposed Sewer
 - Proposed Manhole
 - Proposed Tapping Pipe (subject to consultation with owners of houses with topographical problem)
 - Existing Dry Weather Flow Interceptor to be Modified
 - Existing Dry Weather Flow Interceptor
 - Watching Brief (frequency 1 in 4 sections)
 - Watching Brief (100% monitoring)
 - Site of Archaeological Interest



MATCH LINE
FOR CONTINUATION
SEE DWG FIGURE 10.6

PRINTED BY: cheu8306 8/12/2013 10:37:31 AM
FILENAME: F:\CHINA\UP\image_CADD\Project\15\4572\FIGURE\EIA\4572-EIA-FIG-10.5.dgn



Agreement No. CE 15/2010 (DS)
Upgrading of Cheung Chau and Tai O Sewage Collection, Treatment and Disposal Facilities - Design and Construction
Outlying Islands Sewerage Stage 2 -
Upgrading of Cheung Chau Sewage Collection, Treatment and Disposal Facilities

Title :	ASSESSMENT OF ARCHAEOLOGICAL POTENTIAL WITHIN PROJECT IN CHEUNG CHAU (SHEET 1 OF 15)		
Date :	August 2013	Figure :	10.5