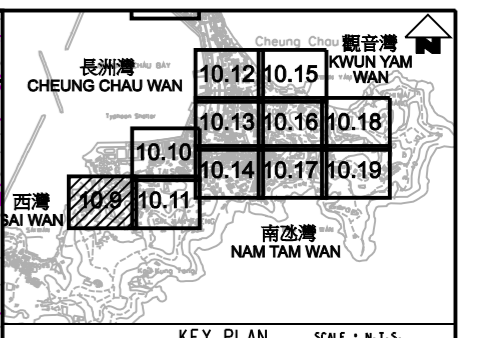
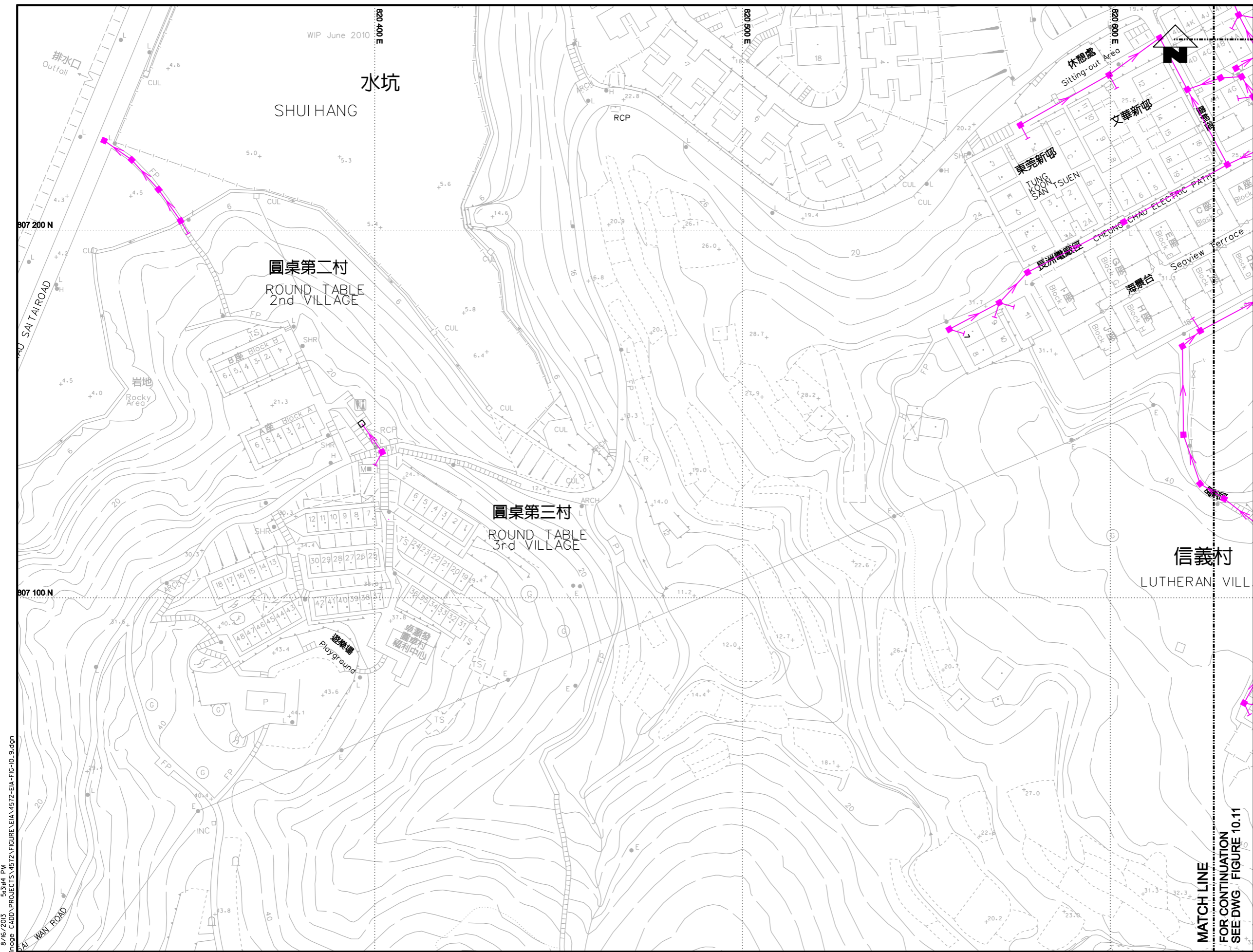
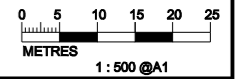


WIP June 2010



- LEGEND AND ABBREVIATION:**
- Proposed Sewer
  - Proposed Manhole
  - Proposed Tapping Pipe (subject to consultation with owners of houses with topographical problem)
  - Existing Dry Weather Flow Interceptor to be Modified
  - Existing Dry Weather Flow Interceptor
  - Watching Brief (frequency 1 in 4 sections)
  - Watching Brief (100% monitoring)
  - Site of Archaeological Interest

MATCH LINE FOR CONTINUATION SEE DWG. FIGURE 10.11



PRINTED BY: cheu8306 8/16/2013 5:37:14 PM FILENAME: P:\CHINA\CD\ongoing CAD\PROJECTS\4572\FIGURE\EA\4572-EA-FIG-10.9.dgn



Agreement No. CE 15/2010 (DS)  
 Upgrading of Cheung Chau and Tai O Sewage Collection, Treatment and Disposal Facilities - Design and Construction  
**Outlying Islands Sewerage Stage 2 -**  
 Upgrading of Cheung Chau Sewage Collection, Treatment and Disposal Facilities

Title :	<b>ASSESSMENT OF ARCHAEOLOGICAL POTENTIAL WITHIN PROJECT IN CHEUNG CHAU (SHEET 5 OF 15)</b>		
Date :	August 2013	Figure :	10.9