

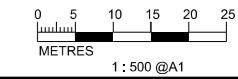
KEY PLAN SCALE: N.T.S.

- LEGEND AND ABBREVIATION:
- Proposed Sewer
 - Proposed Manhole
 - Proposed Tapping Pipe (subject to consultation with owners of houses with topographical problem)
 - Existing Dry Weather Flow Interceptor to be Modified
 - Existing Dry Weather Flow Interceptor
 - Label for Air Sensitive Receiver

PRINTED BY: cheu8306 8/12/2013 9:53:40 AM
 FILENAME: F:\CHINA\UP\orange_CADD\Project\15_4572\FIGURE\ENVIRONMENT\NSR\ASR\4572-FIGURE-CC-3.13.dgn

MATCH LINE
 FOR CONTINUATION
 SEE DWG FIGURE 3.10

MATCH LINE
 FOR CONTINUATION
 SEE DWG FIGURE 3.15



Agreement No. CE 15/2010 (DS)
 Upgrading of Cheung Chau and Tai O Sewage Collection, Treatment and Disposal Facilities - Design and Construction
 Outlying Islands Sewerage Stage 2 -
 Upgrading of Cheung Chau Sewage Collection, Treatment and Disposal Facilities

Title :	AIR SENSITIVE RECEIVERS (SHEET 13 OF 15)		
Date :	August 2013	Figure :	3.13