

KEY PLAN SCALE : N.T.S.

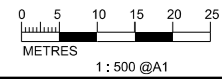
- LEGEND AND ABBREVIATION:
- Proposed Sewer
  - Proposed Manhole
  - Proposed Tapping Pipe (subject to consultation with owners of houses with topographical problem)
  - Existing Dry Weather Flow Interceptor to be Modified
  - Existing Dry Weather Flow Interceptor
  - Watching Brief (frequency 1 in 4 sections)
  - Watching Brief (100% monitoring)
  - Site of Archaeological Interest
  - Existing Sewer to be Upgraded
  - Proposed Sewer to be Constructed using trenchless method
  - Existing Sewer to be Rehabilitated

PRINTED BY: cheuk8306 8/12/2013 10:37:23 AM  
 FILENAME: P:\CHINA\UP\ drainage\_CADD\Project\15\45172\Figure\EA\45172-EIA-FIG-10.12.dgn



Agreement No. CE 15/2010 (DS)  
 Upgrading of Cheung Chau and Tai O Sewage Collection, Treatment and Disposal Facilities - Design and Construction  
**Outlying Islands Sewerage Stage 2 -**  
 Upgrading of Cheung Chau Sewage Collection, Treatment and Disposal Facilities

Title :	<b>ASSESSMENT OF ARCHAEOLOGICAL POTENTIAL WITHIN PROJECT IN CHEUNG CHAU (SHEET 8 OF 15)</b>		
Date :	August 2013	Figure :	10.12



MATCH LINE  
 FOR CONTINUATION  
 SEE DWG FIGURE 10.13

MATCH LINE  
 FOR CONTINUATION  
 SEE DWG FIGURE 10.15