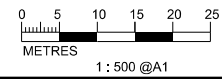


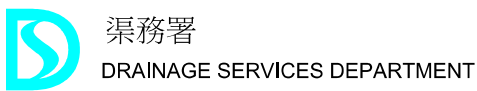
- LEGEND AND ABBREVIATION:**
- Proposed Sewer
 - Proposed Manhole
 - Proposed Tapping Pipe (subject to consultation with owners of houses with topographical problem)
 - Existing Dry Weather Flow Interceptor to be Modified
 - Existing Dry Weather Flow Interceptor
 - Location of Built Heritage Resources

MATCH LINE
FOR CONTINUATION
SEE DWG FIGURE 10.21

MATCH LINE
FOR CONTINUATION
SEE DWG FIGURE 10.23



PRINTED BY: cheu8306 8/12/2013 10:37:41 AM
FILENAME: F:\CHINA\UP\image_CADD\Project\15\15172\FIGURE\EA\4572-EIA-FIG-10.22.dgn



Agreement No. CE 15/2010 (DS)
Upgrading of Cheung Chau and Tai O Sewage Collection, Treatment and Disposal Facilities - Design and Construction
Outlying Islands Sewerage Stage 2 -
Upgrading of Cheung Chau Sewage Collection, Treatment and Disposal Facilities

Title :

Date :

LOCATION OF BUILT HERITAGE RESOURCES (SHEET 3 OF 15)

August 2013

Figure :

10.22