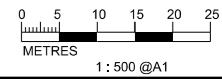


KEY PLAN SCALE : N.T.S.

- LEGEND AND ABBREVIATION:
- Proposed Sewer
 - Proposed Manhole
 - Proposed Tapping Pipe (subject to consultation with owners of houses with topographical problem)
 - Existing Dry Weather Flow Interceptor to be Modified
 - Existing Dry Weather Flow Interceptor
 - Label for Noise Sensitive Receiver
 - Existing Sewer to be Upgraded
 - Proposed Sewer to be Constructed using trenchless method
 - Existing Sewer to be Rehabilitated

MATCH LINE
FOR CONTINUATION
SEE DWG. FIGURE 4.10



PRINTED BY: cheu8306 8/12/2013 9:53:49 AM
 FILENAME: P:\CHINA\UP\image_CADD\Project\15_4572\FIGURE\ENVIRONMENT\NSRV\4572-FIGURE-CC-4_9.dgn



Agreement No. CE 15/2010 (DS)
 Upgrading of Cheung Chau and Tai O Sewage Collection, Treatment and Disposal Facilities - Design and Construction
 Outlying Islands Sewerage Stage 2 -
 Upgrading of Cheung Chau Sewage Collection, Treatment and Disposal Facilities

Title :	NOISE SENSITIVE RECEIVERS (SHEET 8 OF 14)		
Date :	August 2013	Figure :	4.9