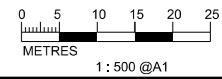


KEY PLAN SCALE : N.T.S.

- LEGEND AND ABBREVIATION:
- Proposed Sewer
  - Proposed Manhole
  - Proposed Tapping Pipe (subject to consultation with owners of houses with topographical problem)
  - Existing Dry Weather Flow Interceptor to be Modified
  - Existing Dry Weather Flow Interceptor
  - Watching Brief (frequency 1 in 4 sections)
  - Watching Brief (100% monitoring)
  - Site of Archaeological Interest



PRINTED BY: cheung8306 8/13/2013 6:13:45 PM  
 FILENAME: F:\CHINA\UP\orange\_CADD\Project\IS\4572\FIGURE\ENVIRONMENT\EMA\4572-EMA-FIG-6.13.dgn

MATCH LINE  
 FOR CONTINUATION  
 SEE DWG FIGURE 6.10

MATCH LINE  
 FOR CONTINUATION  
 SEE DWG FIGURE 6.15



Agreement No. CE 15/2010 (DS)  
 Upgrading of Cheung Chau and Tai O Sewage Collection, Treatment and Disposal Facilities - Design and Construction  
**Outlying Islands Sewerage Stage 2 -**  
 Upgrading of Cheung Chau Sewage Collection, Treatment and Disposal Facilities

Title :	<b>ASSESSMENT OF ARCHAEOLOGICAL POTENTIAL WITHIN PROJECT IN CHEUNG CHAU (SHEET 13 OF 15)</b>		
Date :	August 2013	Figure :	6.13