

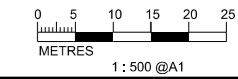
KEY PLAN SCALE : N.T.S.

- LEGEND AND ABBREVIATION:
- Proposed Sewer
 - Proposed Manhole
 - Proposed Tapping Pipe (subject to consultation with owners of houses with topographical problem)
 - Existing Dry Weather Flow Interceptor to be Modified
 - Existing Dry Weather Flow Interceptor
 - Location of Built Heritage Resources
 - Existing Sewer to be Upgraded
 - Proposed Sewer to be Constructed using trenchless method
 - Existing Sewer to be Rehabilitated

PRINTED BY: cheu8306 8/13/2013 6:35:58 PM
 FILENAME: P:\CHINA\DR\ drainage_CADD\Project\15_4572\FIGURE\ENVIRONMENT\EMA_4572-EMA-FIG-6.23.dgn

Agreement No. CE 15/2010 (DS)
 Upgrading of Cheung Chau and Tai O Sewage Collection, Treatment and Disposal Facilities - Design and Construction
Outlying Islands Sewerage Stage 2 -
 Upgrading of Cheung Chau Sewage Collection, Treatment and Disposal Facilities

Title :	LOCATION OF BUILT HERITAGE RESOURCES (SHEET 8 OF 15)		
Date :	August 2013	Figure :	6.23



MATCH LINE
 FOR CONTINUATION
 SEE DWG FIGURE 6.26

MATCH LINE
 FOR CONTINUATION
 SEE DWG FIGURE 6.24