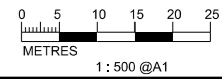


- LEGEND AND ABBREVIATION:
- Proposed Sewer
 - Proposed Manhole
 - Proposed Tapping Pipe (subject to consultation with owners of houses with topographical problem)
 - Existing Dry Weather Flow Interceptor to be Modified
 - Existing Dry Weather Flow Interceptor
 - Watching Brief (frequency 1 in 4 sections)
 - Watching Brief (100% monitoring)
 - Site of Archaeological Interest

MATCH LINE
FOR CONTINUATION
SEE DWG FIGURE 6.2

MATCH LINE
FOR CONTINUATION
SEE DWG FIGURE 6.4



PRINTED BY: cheu8306 8/13/2013 6:33:24 PM
FILENAME: F:\CHINA\UP\image_CADD\Project\5\5172\FIGURE\ENVIRONMENT\EMA\4572-EMA-FIG-6_3.dgn

渠務署
DRAINAGE SERVICES DEPARTMENT

ATKINS

Agreement No. CE 15/2010 (DS)
Upgrading of Cheung Chau and Tai O Sewage Collection, Treatment and Disposal Facilities - Design and Construction
Outlying Islands Sewerage Stage 2 -
Upgrading of Cheung Chau Sewage Collection, Treatment and Disposal Facilities

Title :	ASSESSMENT OF ARCHAEOLOGICAL POTENTIAL WITHIN PROJECT IN CHEUNG CHAU (SHEET 3 OF 15)		
Date :	August 2013	Figure :	6.3