

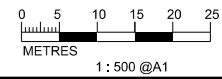
KEY PLAN SCALE : N.T.S.

- LEGEND AND ABBREVIATION:
- Proposed Sewer
  - Proposed Manhole
  - Proposed Tapping Pipe (subject to consultation with owners of houses with topographical problem)
  - Existing Dry Weather Flow Interceptor to be Modified
  - Existing Dry Weather Flow Interceptor
  - CC01 Location of Built Heritage Resources

PRINTED BY: cheu8306 8/13/2013 6:44:07 PM  
 FILENAME: F:\CHINA\UP\image\_CADD\Project\15\_15172\FIGURE\ENVIRONMENT\EMA\45172-EMA-FIG-6\_30.dgn

MATCH LINE  
 FOR CONTINUATION  
 SEE DWG FIGURE 6.28

MATCH LINE  
 FOR CONTINUATION  
 SEE DWG FIGURE 6.29



Agreement No. CE 15/2010 (DS)  
 Upgrading of Cheung Chau and Tai O Sewage Collection, Treatment and Disposal Facilities - Design and Construction  
**Outlying Islands Sewerage Stage 2 -**  
 Upgrading of Cheung Chau Sewage Collection, Treatment and Disposal Facilities

Title :

Date :

August 2013

Figure :

6.30

**LOCATION OF BUILT  
 HERITAGE RESOURCES  
 (SHEET 15 OF 15)**