

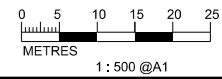
KEY PLAN SCALE : N.T.S.

- LEGEND AND ABBREVIATION:
- Proposed Sewer
 - Proposed Manhole
 - Proposed Tapping Pipe (subject to consultation with owners of houses with topographical problem)
 - Existing Dry Weather Flow Interceptor to be Modified
 - Existing Dry Weather Flow Interceptor
 - Watching Brief (frequency 1 in 4 sections)
 - Watching Brief (100% monitoring)
 - Site of Archaeological Interest
 - Existing Sewer to be Upgraded
 - Proposed Sewer to be Constructed using trenchless method
 - Existing Sewer to be Rehabilitated

TUNG WAN SITE OF ARCHAEOLOGICAL INTEREST

MATCH LINE FOR CONTINUATION SEE DWG FIGURE 6.9

MATCH LINE FOR CONTINUATION SEE DWG FIGURE 6.11



PRINTED BY: cheuk8306 8/13/2013 6:13:39 PM FILENAME: P:\CHINA\UP\image_CADD\Project\15_4572\FIGURE\ENVIRONMENT\EMA_4572-EMA-FIG-6_8.dgn



Agreement No. CE 15/2010 (DS)
 Upgrading of Cheung Chau and Tai O Sewage Collection, Treatment and Disposal Facilities - Design and Construction
 Outlying Islands Sewerage Stage 2 -
 Upgrading of Cheung Chau Sewage Collection, Treatment and Disposal Facilities

Title :	ASSESSMENT OF ARCHAEOLOGICAL POTENTIAL WITHIN PROJECT IN CHEUNG CHAU (SHEET 8 OF 15)		
Date :	August 2013	Figure :	6.8