

Appendix 11-1 Broad Brush Tree Survey Information



LEGEND :

- PROJECT SITE
- EXISTING TREE GROUP

LANDSCAPE RESOURCES (WITHIN PROJECT SITE)

- LR3.A - OPEN STORAGE/ VACANT LOT
- LR6.A - GRASSLAND/ SHRUBLAND
- LR7.A - PONDS AND POND EDGE

Refer to TSP-02 for tree groups outside the Project Site but within Assessment Area

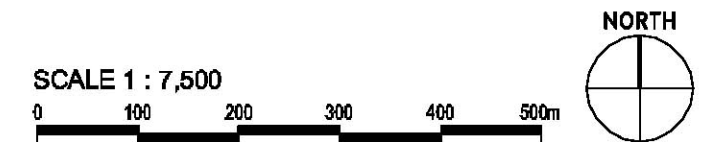


Figure: TSP-01

Title: Broadbrush Tree Survey Plan (within Project Site)

Project: Residential cum Passive Recreational Development within "Recreation" ("REC") Zone and Residential (Group C) Zone at Various Lots in DD 104, Yuen Long, N.T.

SUN HUNG KAI
ARCHITECTS & ENGINEERS LIMITED

Drawn by: VC



Checked by: SHL

Rev.: -

Date: FEB 2014



LEGEND :

-  LANDSCAPE IMPACT ASSESSMENT AREA (500m FROM SITE)
-  PROJECT SITE (Refer to Fig. TSP-01 for tree groups within Project Site)

TREE GROUPS IN LANDSCAPE RESOURCES OUTSIDE PROJECT SITE

-  LR1.B - LOCAL ROADS
-  LR2.B1 - COMPREHENSIVE RESIDENTIAL SETTLEMENTS
-  LR2.B2 - VILLAGE SETTLEMENTS
-  LR3.B - OPEN STORAGE / VACANT LOT
-  LR4.B - AGRICULTURAL FIELD
-  LR5.B - PLANTATION
-  LR6.B - GRASSLAND / SHRUBLAND
-  LR7.B - PONDS AND POND EDGE
-  LR8.B - MODIFIED WATERCOURSE
-  LR9.B - PUBLIC AMENITY AREA
-  LR10.B - HIGHWAYS

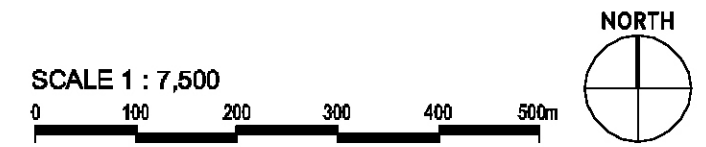


Figure: TSP-02.1

Title: Broadbrush Tree Survey Plan (outside Project Site but within Assessment Area)
(overlaid on greyscale aerial photograph)

Project: Residential cum Passive Recreational Development within "Recreation" ("REC") Zone and Residential (Group C) Zone at Various Lots in DD 104, Yuen Long, N.T.



SUN HUNG KAI
ARCHITECTS & ENGINEERS LIMITED

Drawn by:
Checked by:
Rev.: A -
Date: DEC 2013

T:\S\K\49_A\Add1\DWG\GA\FIG1-102.dwg, Layout1, 22/May/2013 12:57:13 PM, EIK, 1:1



LEGEND :

-  LANDSCAPE IMPACT ASSESSMENT AREA (500m FROM SITE)
-  PROJECT SITE (Refer to Fig. TSP-01 for tree groups within Project Site)

TREE GROUPS IN LANDSCAPE RESOURCES OUTSIDE PROJECT SITE

-  LR1.B - LOCAL ROADS
-  LR2.B1 - COMPREHENSIVE RESIDENTIAL SETTLEMENTS
-  LR2.B2 - VILLAGE SETTLEMENTS
-  LR3.B - OPEN STORAGE / VACANT LOT
-  LR4.B - AGRICULTURAL FIELD
-  LR5.B - PLANTATION
-  LR6.B - GRASSLAND / SHRUBLAND
-  LR7.B - PONDS AND POND EDGE
-  LR8.B - MODIFIED WATERCOURSE
-  LR9.B - PUBLIC AMENITY AREA
-  LR10.B - HIGHWAYS

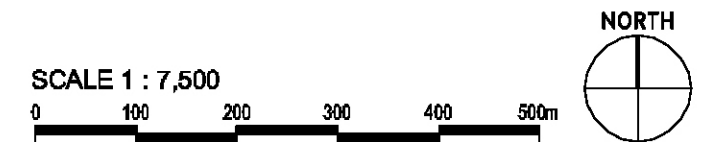


Figure: TSP-02.2

Title: Broadbrush Tree Survey Plan (outside Project Site but within Assessment Area)
(overlaid on colour aerial photograph)

Project: Residential cum Passive Recreational Development within "Recreation" ("REC") Zone and Residential (Group C) Zone at Various Lots in DD 104, Yuen Long, N.T.

 **SUN HUNG KAI**
ARCHITECTS & ENGINEERS LIMITED

Drawn by:

Checked by:

Rev.: A -

Date: DEC 2013

**Proposed Residential cum Passive Recreational Development
within "Recreation" ("REC") Zone and Residential (Group C) Zone at Various Lots in DD 104,
Yuen Long, New Territories**

SCHEDULE 1 - Broadbrush Tree Survey Schedule (within Project Site)

TREE GROUP No.	ASSOCIATED LANDSCAPE RESOURCE	BOTANICAL NAME	CHINESE NAME	APPROX. NOS.	SIZE (m)			FORM (G/F/P)	HEALTH (G/F/P)	AMENITY VALUE (H/M/L)	SURVIVAL RATE AFTER TRANSPLANTING (H/M/L)	PROPOSED ACTION		
					Girth	Overall Height	Crown Spread					Retain	Fell	Transplant
TG1	LR3.A Open Storage / Vacant Lot	<i>Archontophoenix alexandrae</i>	假檳榔	1	0.3	7	3	F	F	M	M	0	0	1
		<i>Bauhinia purpurea</i>	紅花羊蹄甲	3	0.3 - 0.6	3-8	4-7	P	P-F	L	L-M	0	3	0
		<i>Bombax ceiba</i>	木棉	1	0.3	4	3	F	F	M	M	0	0	1
		<i>Celtis sinensis</i>	朴樹	5	0.4 - 1.6	5-11	4-9	P-F	P-G	L-M	L	0	4	1
		<i>Cinnamomum camphora</i>	樟	29	0.5 - 1.1	4-11	3-11	P-G	P-G	L-H	L-M	0	26	3
		<i>Ficus benjamina</i>	垂葉榕	5	0.5 - 1.6	5-8	4-7	P-F	F-G	L-M	M-H	0	4	1
		<i>Ficus microcarpa</i>	細葉榕	1	0.9	9	10	P	F	L	M	0	1	0
		<i>Ficus virens</i>	大葉榕	1	2.5	11	8	P	F	L	L	0	1	0
		<i>Leucaena leucocephala</i>	銀合歡	1	0.3	6	4	P	F	L	L	0	1	0
		<i>Macaranga tanarius var. tomentosa</i>	血桐	11	0.3 - 0.9	4-9	4-8	P-F	P-F	L	L-M	0	11	0
		<i>Melia azedarach</i>	苦楝	1	0.7	8	7	F	P	L	L	0	1	0
TG1 SUBTOTAL				59							0	52	7	
TG2	LR6.A Grassland / shrubland	<i>Albizia lebbek</i>	大葉合歡	4	0.3 - 0.4	3-6	3-5	P-F	F-G	L	H	4	0	0
		<i>Ficus microcarpa</i>	細葉榕	3	0.3 - 0.3	4-6	2-5	P	F-G	L	M-H	2	0	1
		<i>Syzygium jambos</i>	蒲桃	1	0.3	4	3	P	G	L	H	1	0	0
		TG2 SUBTOTAL				8							7	0
TG3	LR6.A Grassland / shrubland	<i>Celtis sinensis</i>	朴樹	3	1.0 - 1.8	7-11	6-12	P-F	P-F	L-M	L	0	3	0
		<i>Ficus microcarpa</i>	細葉榕	2	0.3 - 0.3	5-6	4	P	F	L	L-M	0	2	0
		<i>Leucaena leucocephala</i>	銀合歡	2	0.4 - 0.8	5-6	4-5	P-F	P	L	L	0	2	0
		<i>Macaranga tanarius var. tomentosa</i>	血桐	11	0.3 - 1.0	3-6	3-6	P-F	P-F	L	L-M	0	11	0
		<i>Mangifera indica</i>	芒果	1	0.5	5	5	P	F	L	M	0	1	0
		<i>Melia azedarach</i>	苦楝	4	1.1 - 1.9	11-15	7-15	P-F	P-F	L	L	0	4	0
		<i>Morus alba</i>	桑	1	0.8	7	6	P	P	L	L	0	1	0
TG3 SUBTOTAL				24							0	24	0	

TREE GROUP No.	ASSOCIATED LANDSCAPE RESOURCE	BOTANICAL NAME	CHINESE NAME	APPROX. NOS.	SIZE (m)			FORM (G/F/P)	HEALTH (G/F/P)	AMENITY VALUE (H/M/L)	SURVIVAL RATE AFTER TRANSPLANTING (H/M/L)	PROPOSED ACTION		
					Girth	Overall Height	Crown Spread					Retain	Fell	Transplant
TG4	LR6.A Grassland / shrubland	<i>Albizia lebbbeck</i>	大葉合歡	1	0.7	7	7	F	F	L	M	1	0	0
		<i>Artocarpus heterophyllus</i>	波蘿蜜	1	0.4	3	3	F	F	L	H	1	0	0
		<i>Celtis sinensis</i>	朴樹	4	0.9 - 1.8	5-10	6-11	P-F	P-G	L-M	L-M	0	3	1
		<i>Dimocarpus longan</i>	龍眼	1	0.4	8	6	F	P	L	L	1	0	0
		<i>Macaranga tanarius var. tomentosa</i>	血桐	3	0.3 - 0.5	4	3 - 6	P - F	P	L	H	3	0	0
		<i>Melia azedarach</i>	苦楝	3	0.4 - 1.5	4-6	3-12	P	P-F	L	L-M	3	0	0
		TG4 SUBTOTAL				13							9	3
TG5	LR7.A Ponds and Pond Edge	<i>Clausena lansium</i>	黃皮	3	0.3 - 0.6	5-7	5-6	P-G	P-F	L	L	3	0	0
		<i>Dimocarpus longan</i>	龍眼	7	0.6 - 0.8	5-8	5-7	P-F	F-G	L-M	L-M	7	0	0
		<i>Macaranga tanarius var. tomentosa</i>	血桐	21	0.3 - 1.1	3-6	2-8	P-G	P-F	L	L-H	21	0	0
		<i>Mangifera indica</i>	芒果	2	0.5 - 1.0	6-8	5-7	P-F	F-G	L-H	L	2	0	0
		<i>Melia azedarach</i>	苦楝	8	0.7 - 1.6	7-15	6-12	P-F	P-F	L	L	8	0	0
		<i>Sapium sebiferum</i>	烏桕	3	0.3 - 0.4	5-6	4	P	P	L	L	3	0	0
		TG5 SUBTOTAL				44							44	0

GRAND TOTAL WITHIN PROJECT SITE: 148 nos.

SCHEDULE 2 – Broadbrush Tree Survey Schedule (outside Project Site but within Assessment Area)

Landscape Resource	Botanical Name	Size (m)		Condition		Amenity value (L/M/H)	Quantity (approx.)	Maturity
		Height	Spread	Form (P/F/G)	Health (P/F/G)			
LR1.B (Roads)	<i>Bauhinia</i> spp. (along Yau Pok Road) * <i>Bischofia javanica</i> <i>Bombax ceiba</i> <i>Cassia fistula</i> <i>Cleistocalyx nervosum</i> <i>Delonix regia</i> (along Yau Pok Road) * <i>Eucalyptus</i> spp. (along Castle Peak Road) * <i>Ficus microcarpa</i> <i>Hibiscus tiliaceus</i> <i>Lagerstroemia speciosa</i> <i>Leucaena leucocephala</i> <i>Macaranga tanarius</i> var. <i>tomentosa</i> <i>Melia azedarach</i> <i>Melaleuca cajuputi</i> subsp. <i>cumingiana</i> * <i>Peltophorum pterocarpum</i> <i>Pterocarpus indicus</i> <i>Spathodea campanulata</i> <i>Syzygium jambos</i>	3 - 12	2 - 8	P	P-F	L	500	Young to mature
	<u>Old and Valuable Tree (No. LCSD YL/7)</u> <i>Melaleuca cajuputi</i> subsp. <i>cumingiana</i>	17	13	F	F	H		
LR2.B1 (Residential Estate Settlement)	<i>Acacia confusa</i> <i>Albizia lebeck</i> <i>Aleurites moluccana</i> <i>Archontophoenix alexandrae</i> * <i>Arcauria heterophylla</i> * <i>Bauhinia</i> spp. <i>Bombax ceiba</i> <i>Callistemon viminalis</i> <i>Celtis sinensis</i> <i>Chrysalidocarpus lutescens</i> <i>Cinnamomum burmanii</i> <i>Delonix regia</i> * <i>Ficus benjamina</i> <i>Ficus microcarpa</i> <i>Ficus virens</i> var. <i>sublanceolata</i> <i>Grevillea robusta</i> <i>Hibiscus tiliaceus</i> <i>Juniperus chinensis</i> <i>Khaya senegalensis</i> <i>Lagestromia speciosa</i>	3 - 13	3 - 10	F	F	L - M	1,500	Young to mature

Landscape Resource	Botanical Name	Size (m)		Condition		Amenity value (L/M/H)	Quantity (approx.)	Maturity
		Height	Spread	Form (P/F/G)	Health (P/F/G)			
	<i>Macaranga tanarius</i> var. <i>tomentosa</i> <i>Melaleuca cajuputi</i> subsp. <i>cumingiana</i> <i>Melia azedarach</i> <i>Michelia x alba</i> <i>Musa</i> spp. <i>Phoenix roebelenii</i> <i>Roystonea regia</i> * <i>Salix babylonica</i> <i>Sapium sebiferum</i> <i>Taxodium distichum</i>							
LR2.B2 (Village Settlements)	<i>Araucaria heterophylla</i> <i>Archontophoenix alexandrae</i> * <i>Averrhoa carambola</i> <i>Bauhinia</i> spp. <i>Bischofia japonica</i> <i>Bombax ceiba</i> <i>Celtis sinensis</i> <i>Cinnamomum camphora</i> <i>Citrus maxima</i> <i>Clausena lansium</i> <i>Delonix regia</i> <i>Dimocarpus longan</i> * <i>Dracontomelon duperreanum</i> <i>Elaeocarpus rugosus</i> <i>Ficus benjamina</i> <i>Ficus microcarpa</i> <i>Hibiscus tiliaceus</i> <i>Juniperus chinensis</i> var. <i>kaizuca</i> <i>Lagetroemia speciosa</i> <i>Litchi chinensis</i> * <i>Livistonia chinensis</i> <i>Macaranga tanarius</i> var. <i>tomentosa</i> <i>Mangifera indica</i> <i>Melaleuca cajuputi</i> subsp. <i>cumingiana</i> <i>Melia azedarach</i> <i>Michelia x alba</i> <i>Morus alba</i> <i>Phoenix roebelenii</i> <i>Psidium guajava</i> <i>Sapium sebiferum</i> <i>Syzygium jambos</i> <i>Terminalia mantaly</i>	3 - 13	3 - 10	P	P-F	L	180	Young to mature

Landscape Resource	Botanical Name	Size (m)		Condition		Amenity value (L/M/H)	Quantity (approx.)	Maturity
		Height	Spread	Form (P/F/G)	Health (P/F/G)			
LR3.B (Open Storage)	<i>Archontophoenix alexandrae</i> <i>Artocarpus heterophyllus</i> <i>Bauhinia</i> spp. <i>Bombax ceiba</i> * <i>Casuarina equisetifolia</i> <i>Ficus microcarpa</i> * <i>Leucaena leucocephala</i> <i>Macaranga tanarius</i> var. <i>tomentosa</i> <i>Melaleuca cajuputi</i> subsp. <i>Cumingiana</i>	4 - 12	3 - 8	P	P-F	L	650	Young
LR4.B (Agricultural Field)	<i>Dimocarpus longan</i> * <i>Leucaena leucocephala</i> <i>Litchi chinensis</i> * <i>Macaranga tanarius</i> var. <i>tomentosa</i>	4 - 6	5 - 7	P-F	P-F	L	350	Young
LR5.B (Plantation)	<i>Averrhoa carambola</i> <i>Bombax ceiba</i> * <i>Celtis sinensis</i> <i>Clausena lansium</i> <i>Cleistocalyx nervosum</i> <i>Delonix regia</i> <i>Eucalyptus</i> spp * <i>Ficus altissima</i> <i>Ficus benjamina</i> * <i>Ficus binnendijkii</i> <i>Ficus microcarpa</i> <i>Hibiscus tiliaceus</i> * <i>Lagerstroemia speciosa</i> * <i>Leucaena leucocephala</i> <i>Litchi chinensis</i> <i>Macaranga tanarius</i> var. <i>tomentosa</i> <i>Melaleuca cajuputi</i> subsp. <i>cumingiana</i> * <i>Spathodea campanulata</i> <i>Syzygium jambos</i>	3 - 12	3 - 13	P	P-F	L	250	Young to mature
LR6.B (Grassland/ Shrubland)	<i>Leucaena leucocephala</i> * <i>Macaranga tanarius</i> var. <i>tomentosa</i> *	3 - 5	5 - 6	P	P	L	150	Young
LR7.B (Ponds)	<i>Acacia auriculiformis</i> <i>Albizia lebbbeck</i> <i>Aleurites moluccana</i> <i>Annona squamosa</i> <i>Artocarpus heterophyllus</i> <i>Bauhinia</i> spp. <i>Bombax ceiba</i>	2 - 10	3 - 9	P	P-F	L	420	Young

Landscape Resource	Botanical Name	Size (m)		Condition		Amenity value (L/M/H)	Quantity (approx.)	Maturity
		Height	Spread	Form (P/F/G)	Health (P/F/G)			
	<i>Callistemon viminalis</i> <i>Carica papaya</i> <i>Casuarina equisetifolia</i> <i>Celtis sinensis</i> <i>Cinnamomum camphora</i> <i>Citrus maxima</i> <i>Clausena lansium</i> <i>Dimocarpus longan</i> * <i>Diospyros kaki</i> <i>Ficus hispida</i> <i>Ficus microcarpa</i> <i>Khaya senegalensis</i> <i>Litchi chinensis</i> * <i>Macaranga tanarius</i> var. <i>tomentosa</i> * <i>Mangifera indica</i> <i>Melia azedarach</i> <i>Peltophorum pterocarpum</i> <i>Syzygium cumini</i> <i>Syzygium jambos</i>							
LR8.B (Modified Watercourse)	<i>Leucaena leucocephala</i> * <i>Macaranga tanarius</i>	2 - 3	3 - 4	P	P	L	140	Young
LR9.B (Public Amenity Area)	<i>Cassia fistula</i> * <i>Delonix regia</i> <i>Peltophorum pterocarpum</i> *	3 - 5	2 - 4	G	G	M	60	Young
LR10.B (Highways)	<i>Bombax ceiba</i> <i>Eucalyptus</i> spp. * <i>Lagerstroemia speciosa</i>	12 – 15	6 – 8	P	P-F	L	150	Young - Mature
GRAND TOTAL OUTSIDE PROJECT SITE BUT WITHIN ASSESSMENT AREA:							4,350	

* Predominant species



Tree Group no. TG1



Tree Group no. TG2

Appendix: 11- 1

Title: Broadbrush Tree Survey Photographs (within Project Site) (Page 1 of 4)

Project: Residential cum Passive Recreational Development within "Recreation" ("REC") Zone and Residential (Group C)"Zone at Various Lots in DD 104, Yuen Long, N.T.

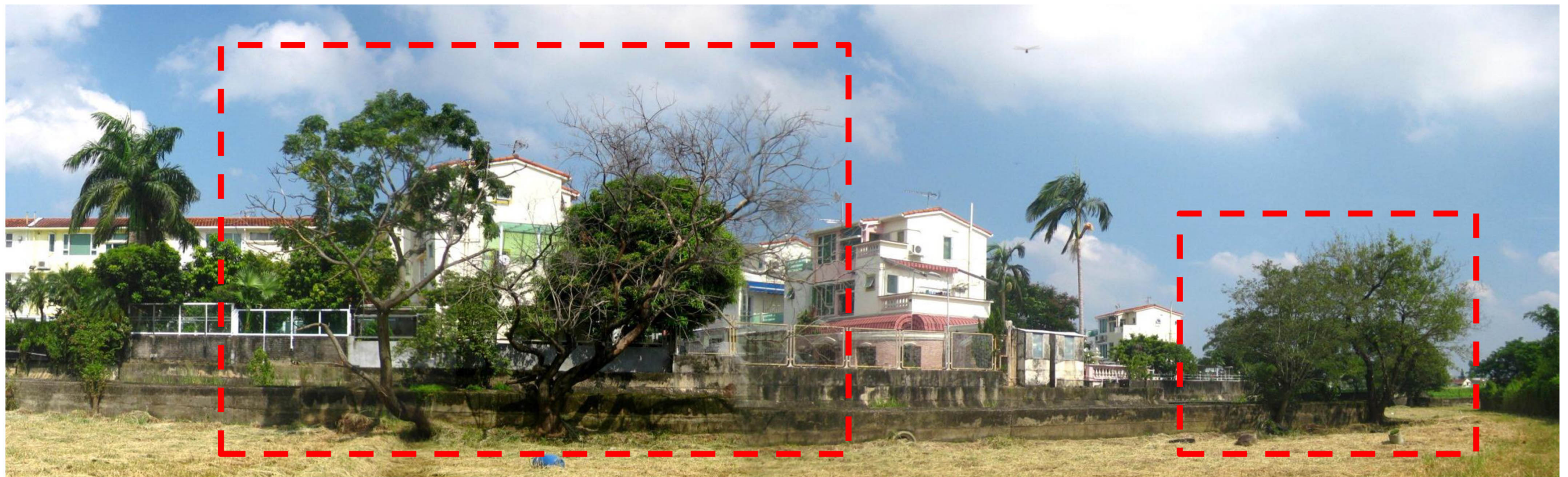
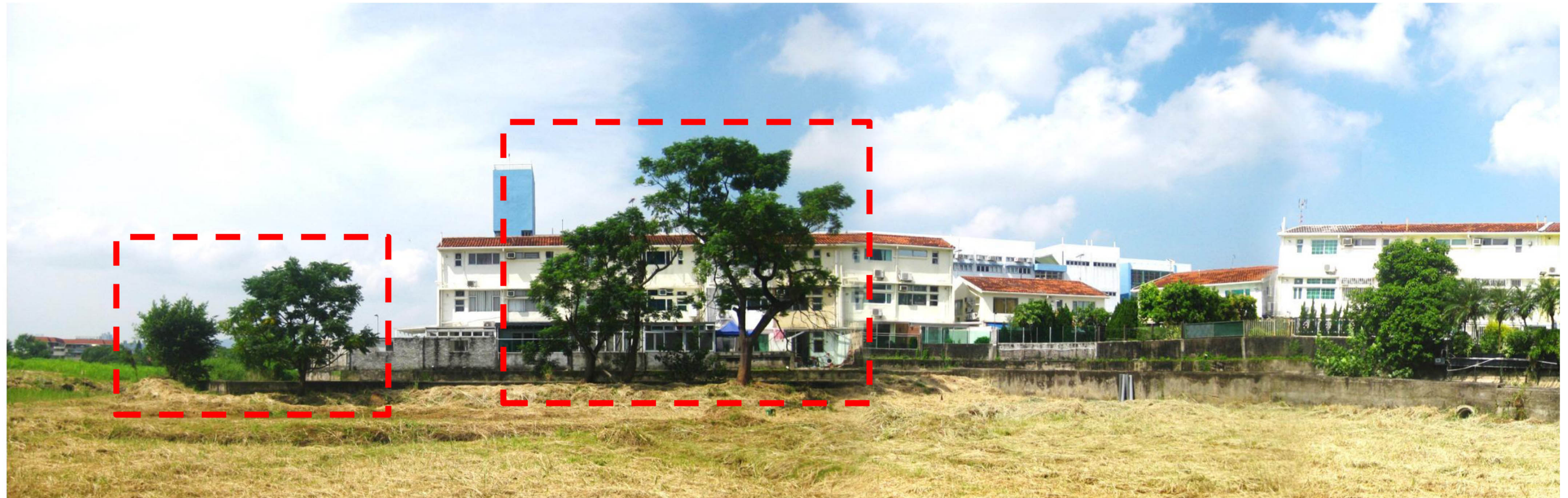
SUN HUNG KAI
ARCHITECTS & ENGINEERS LIMITED

Drawn by: VC

Checked by: SHL

Rev.: --

Date: SEPT 2013



Tree Group no. TG3

Appendix: 11- 1

Title: Broadbrush Tree Survey Photographs (within Project Site) (Page 2 of 4)

Project: Residential cum Passive Recreational Development within "Recreation" ("REC") Zone and Residential (Group C)"Zone at Various Lots in DD 104, Yuen Long, N.T.

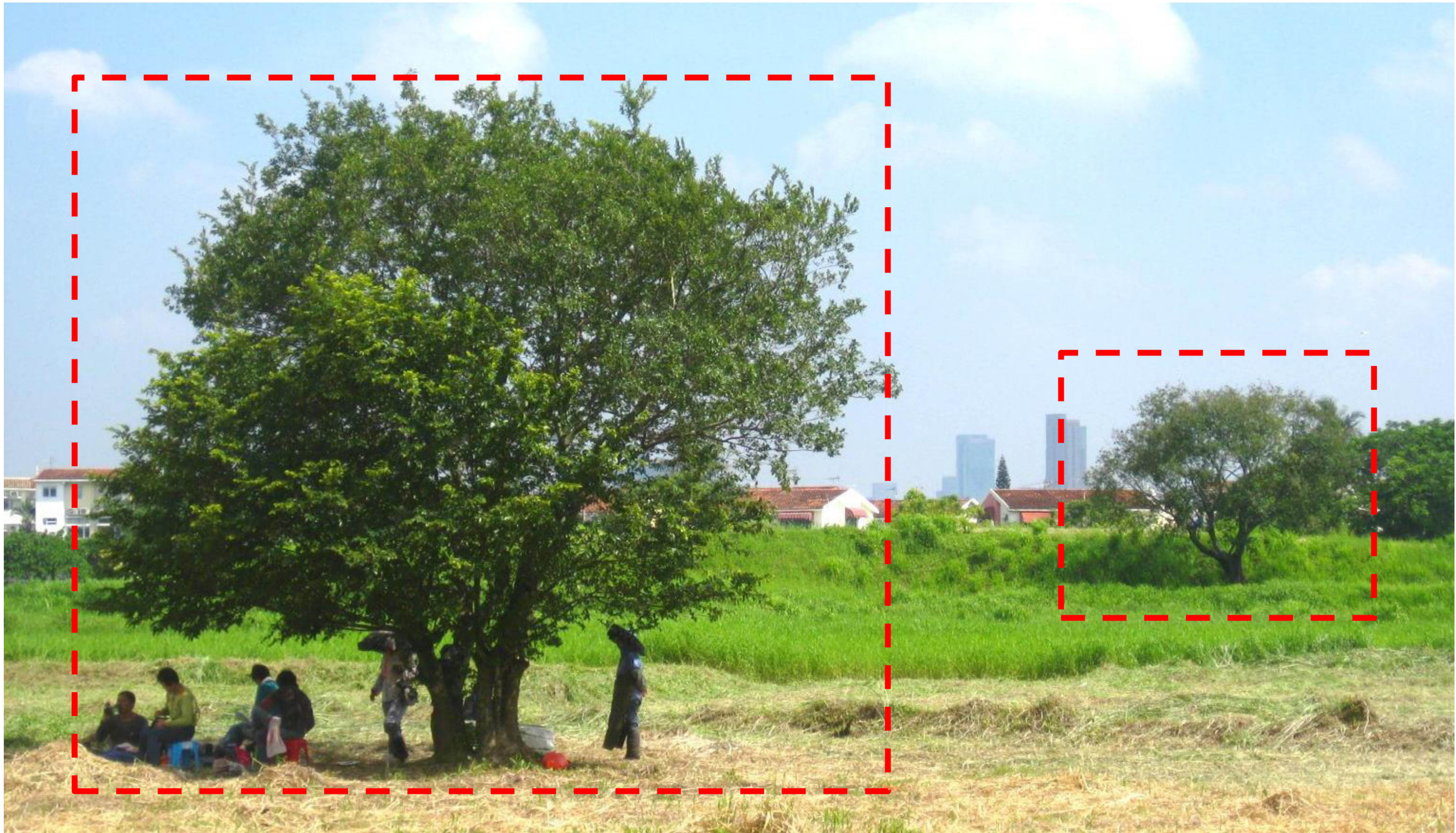
SUN HUNG KAI
ARCHITECTS & ENGINEERS LIMITED

Drawn by: VC

Checked by: SHL

Rev.: --

Date: SEPT 2013



Tree Group no. TG4

Appendix: 11- 1

Title: Broadbrush Tree Survey Photographs (within Project Site) (Page 3 of 4)

Project: Residential cum Passive Recreational Development within "Recreation" ("REC") Zone and Residential (Group C)"Zone at Various Lots in DD 104, Yuen Long, N.T.

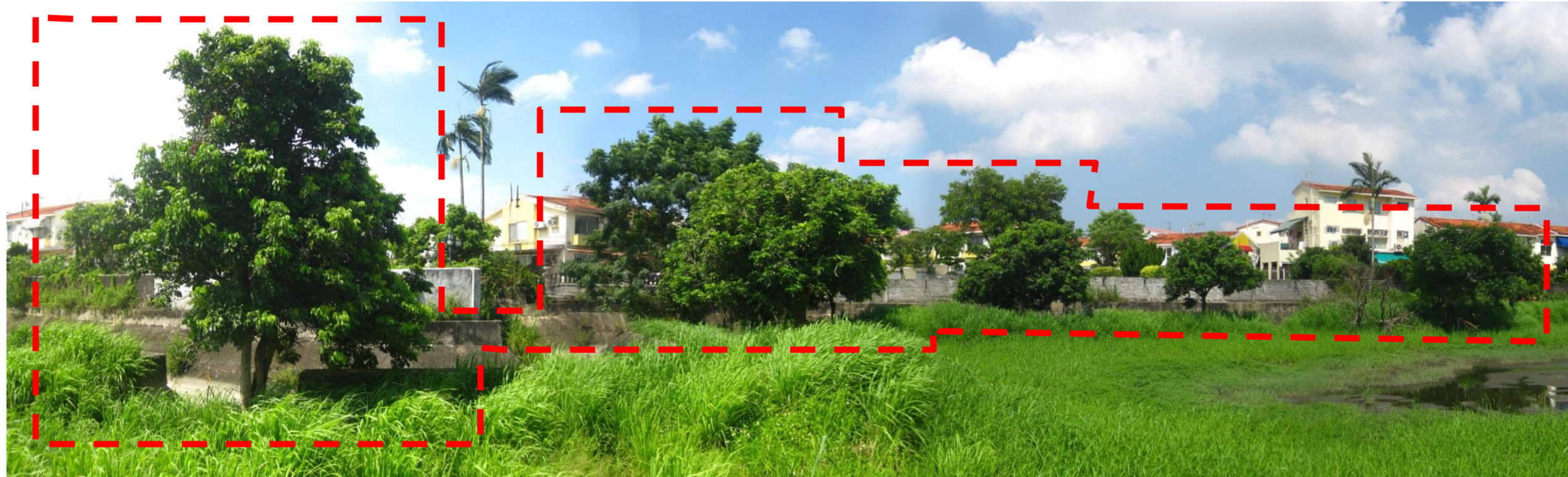
SUN HUNG KAI
ARCHITECTS & ENGINEERS LIMITED

Drawn by: VC

Checked by: SHL

Rev.: --

Date: SEPT 2013



Tree Group no. TG5

Appendix: 11- 1

Title: Broadbrush Tree Survey Photographs (within Project Site) (Page 4 of 4)

Project: Residential cum Passive Recreational Development within "Recreation" ("REC") Zone and Residential (Group C)"Zone at Various Lots in DD 104, Yuen Long, N.T.

SUN HUNG KAI
ARCHITECTS & ENGINEERS LIMITED

Drawn by: VC

Checked by: SHL

Rev.: --

Date: SEPT 2013