

Notes

- Key to symbols
- - - - - PROJECT BOUNDARY
 - > PROPOSED DRAINAGE PIPE
 - > PROPOSED DRAINAGE CHANNEL
 - > PROPOSED UPGRADE TO 1200mm
 - > PROPOSED SEWER
 - - - - - PROPOSED RISING MAINS
 - | CONNECTION TO BUILDING
 - | CONNECTION TO BUILDING
 - - -| CONNECTION TO BUILDING
 - PROPOSED DISCHARGE CHAMBER
 - PROPOSED TERMINAL MANHOLE
 - PROPOSED DRAINAGE MANHOLE
 - CP PROPOSED CATCH PIT
 - ⊗ SAND TRAP
 - ⌋ PROPOSED INTAKE/OUTLET STRUCTURE
 - PROPOSED SEWERAGE MANHOLE
 - ⊗ PROPOSED SEWAGE SUMP PIT
 - × OUTFALL

Rev	Date	Drawn	Description	Ch'kd	App'd
P4	MAR 14	MING	GENERAL REVISION	FK	AFK
P3	MAR 14	MING	GENERAL REVISION	FK	AFK
P2	FEB 14	MING	GENERAL REVISION	FK	AFK
P1	JAN 14	MING	FIRST ISSUE	FK	AFK

Mott MacDonald

20/F Two Landmark East
100 How Ming Street
Kowloon, Kowloon
Hong Kong
T +852 2828 5757
F +852 2827 1823
www.mottmac.com.hk

Client

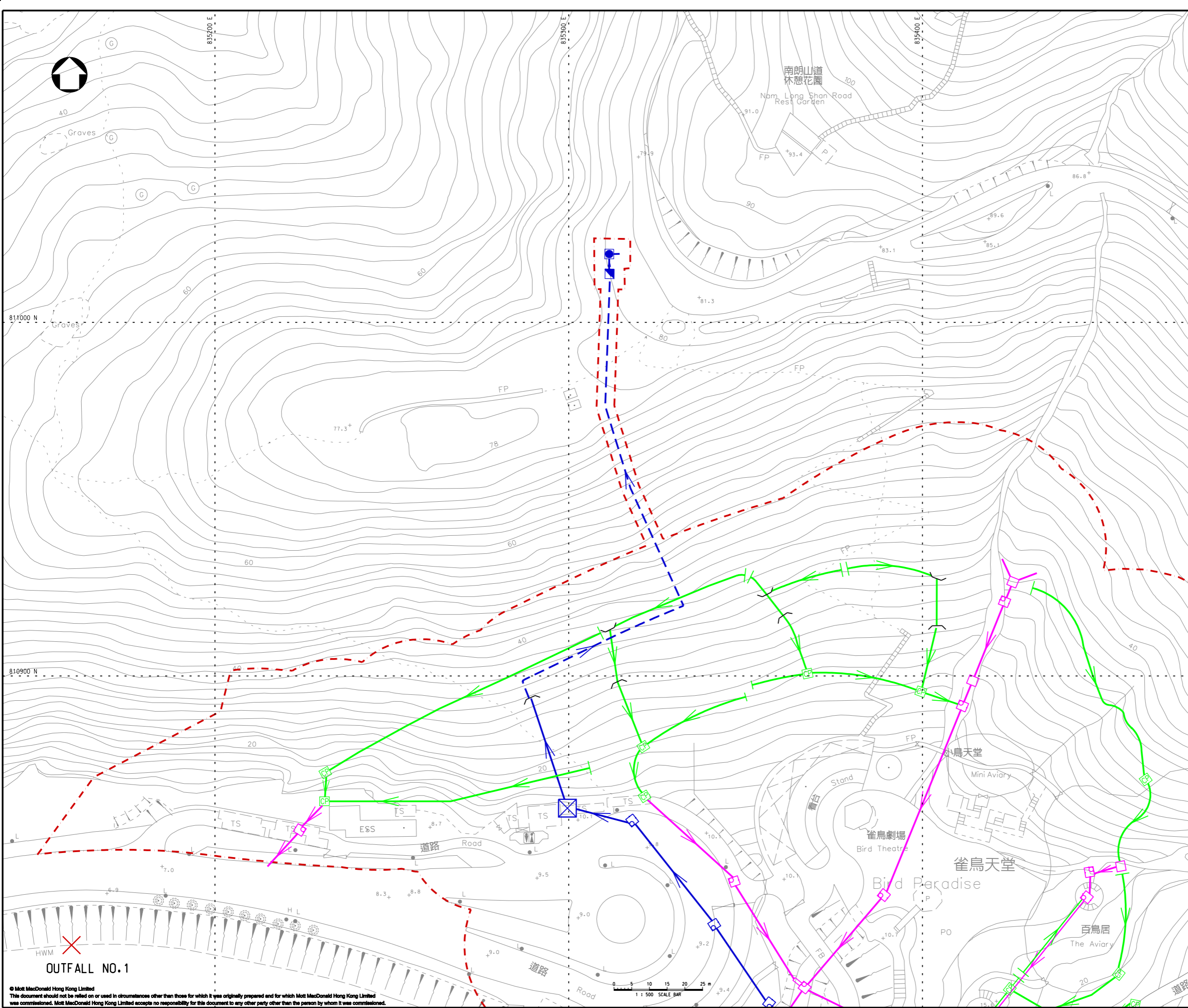
Project

**TAI SHUE WAN DEVELOPMENT
AT OCEAN PARK**

Title

**TENTATIVE LOCATIONS OF PROPOSED
DRAINAGE AND SEWERAGE FACILITIES AND
LOCATIONS OF EXISTING OUTFALLS**

Designed	FK	Eng check	FW
Drawn	MING	Coordination	FW
Dwg check	FK	Approved	AFK
Scale at A1	1:1000	Status	PRE
Drawing Number	FIGURE 6.2		Rev P4



Notes

Key to symbols

- - - PROJECT BOUNDARY
- > PROPOSED DRAINAGE PIPE
- > PROPOSED DRAINAGE CHANNEL
- > PROPOSED UPGRADE TO 1200mm
- > PROPOSED SEWER
- - -> PROPOSED RISING MAINS
- | CONNECTION TO BUILDING
- | CONNECTION TO BUILDING
- - -| CONNECTION TO BUILDING
- ◻ PROPOSED DISCHARGE CHAMBER
- ◼ PROPOSED TERMINAL MANHOLE
- ◻ PROPOSED DRAINAGE MANHOLE
- ◻ PROPOSED CATCH PIT
- ⊗ SAND TRAP
- ⌋ PROPOSED INTAKE/OUTLET STRUCTURE
- ◻ PROPOSED SEWERAGE MANHOLE
- ⊗ PROPOSED SEWAGE SUMP PIT
- X OUTFALL

P2	MAR 14	MING	GENERAL REVISION	FK	AFK
P1	MAR 14	MING	FIRST ISSUE	FK	AFK
Rev	Date	Drawn	Description	Ch'kd	App'd



20/F Two Landmark East
100 How Ming Street
Kowloon, Kowloon
Hong Kong
T +852 2828 5757
F +852 2827 1823
www.mottmac.com.hk

Client



Project

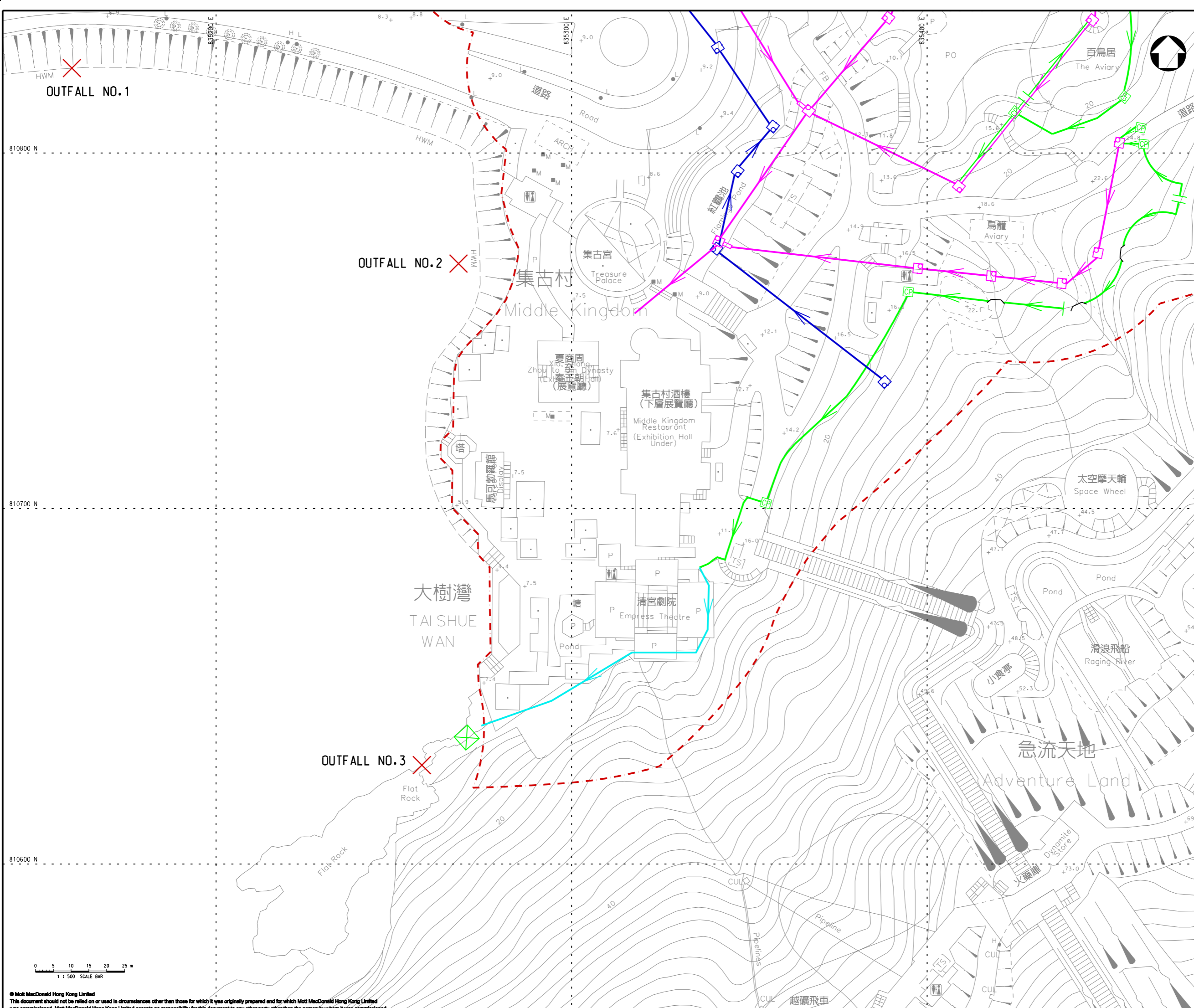
**TAI SHUE WAN DEVELOPMENT
AT OCEAN PARK**

Title

**TENTATIVE LOCATIONS OF PROPOSED
DRAINAGE AND SEWERAGE FACILITIES AND
LOCATIONS OF EXISTING OUTFALLS**

Designed	FK	Eng check	FW
Drawn	MING	Coordination	FW
Dwg check	FK	Approved	AFK
Scale at A1	Status	Rev	
1:500	PRE	P2	

Drawing Number **FIGURE 6.2a**



Notes

- Key to symbols**
- - - PROJECT BOUNDARY
 - > PROPOSED DRAINAGE PIPE
 - > PROPOSED DRAINAGE CHANNEL
 - > PROPOSED UPGRADE TO 1200mm
 - > PROPOSED SEWER
 - - -> PROPOSED RISING MAINS
 - | CONNECTION TO BUILDING
 - | CONNECTION TO BUILDING
 - - -| CONNECTION TO BUILDING
 - PROPOSED DISCHARGE CHAMBER
 - PROPOSED TERMINAL MANHOLE
 - PROPOSED DRAINAGE MANHOLE
 - CP PROPOSED CATCH PIT
 - ⊠ SAND TRAP
 - | PROPOSED INTAKE/OUTLET STRUCTURE
 - PROPOSED SEWERAGE MANHOLE
 - ⊠ PROPOSED SEWAGE SUMP PIT
 - X OUTFALL

P2	MAR 14	MING	GENERAL REVISION	FK	AFK
P1	MAR 14	MING	FIRST ISSUE	FK	AFK
Rev	Date	Drawn	Description	Ch'kd	App'd

Mott MacDonald

20/F Two Landmark East
100 How Ming Street
Kowloon, Kowloon
Hong Kong
T +852 2828 5757
F +852 2827 1823
www.mottmac.com.hk



Project

**TAI SHUE WAN DEVELOPMENT
AT OCEAN PARK**

Title

**TENTATIVE LOCATIONS OF PROPOSED
DRAINAGE AND SEWAGE FACILITIES AND
LOCATIONS OF EXISTING OUTFALLS**

Designed	FK	Eng check	FW
Drawn	MING	Coordination	FW
Dwg check	FK	Approved	AFK
Scale at A1	Status		Rev
1:500	PRE		P2
Drawing Number	FIGURE 6.2b		

