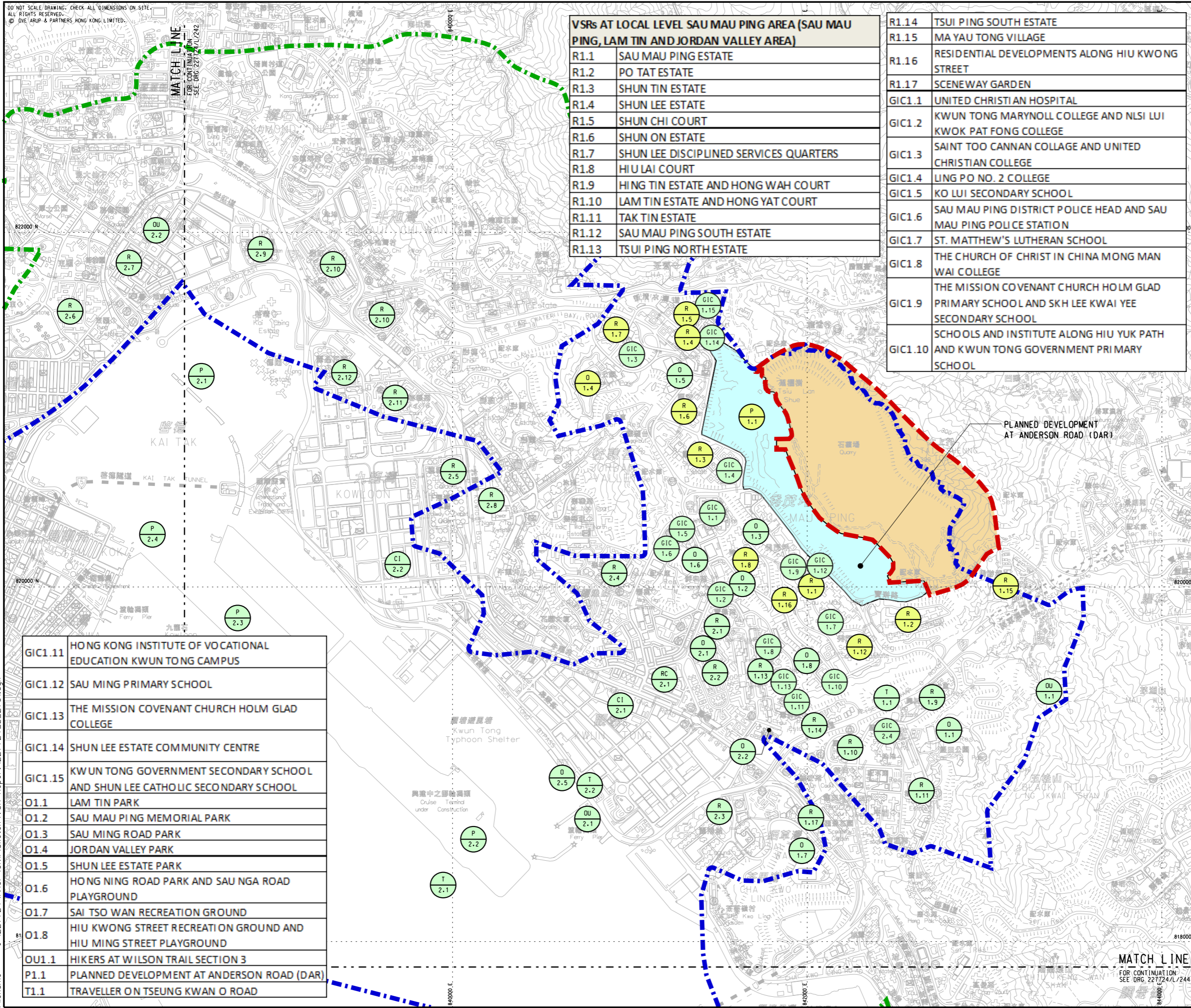


DO NOT SCALE DRAWING. CHECK ALL DIMENSIONS ON SITE.
ALL RIGHTS RESERVED.
© DVE ARUP & PARTNERS HONG KONG LIMITED.

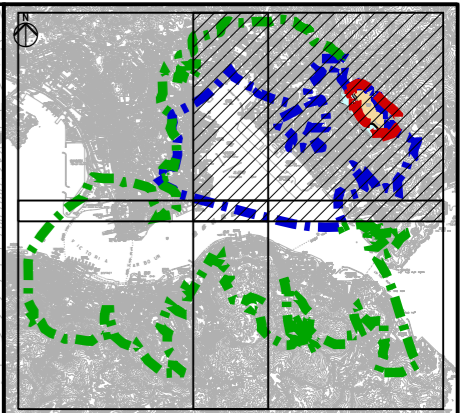


VSRs AT LOCAL LEVEL SAU MAU PING AREA (SAU MAU PING, LAM TIN AND JORDAN VALLEY AREA)

R1.1	SAU MAU PING ESTATE
R1.2	PO TAT ESTATE
R1.3	SHUN TIN ESTATE
R1.4	SHUN LEE ESTATE
R1.5	SHUN CHI COURT
R1.6	SHUN ON ESTATE
R1.7	SHUN LEE DISCIPLINED SERVICES QUARTERS
R1.8	HIU LAI COURT
R1.9	HING TIN ESTATE AND HONG WAH COURT
R1.10	LAM TIN ESTATE AND HONG YAT COURT
R1.11	TAK TIN ESTATE
R1.12	SAU MAU PING SOUTH ESTATE
R1.13	TSUI PING NORTH ESTATE

R1.14	TSUI PING SOUTH ESTATE
R1.15	MA YAU TONG VILLAGE
R1.16	RESIDENTIAL DEVELOPMENTS ALONG HIU KWONG STREET
R1.17	SCENEWAY GARDEN
GIC1.1	UNITED CHRISTIAN HOSPITAL
GIC1.2	KWUN TONG MARYNOLL COLLEGE AND NLSI LUI KWOK PAT FONG COLLEGE
GIC1.3	SAINT TOO CANNAN COLLAGE AND UNITED CHRISTIAN COLLEGE
GIC1.4	LING PO NO. 2 COLLEGE
GIC1.5	KO LUI SECONDARY SCHOOL
GIC1.6	SAU MAU PING DISTRICT POLICE HEAD AND SAU MAU PING POLICE STATION
GIC1.7	ST. MATTHEW'S LUTHERAN SCHOOL
GIC1.8	THE CHURCH OF CHRIST IN CHINA MONG MAN WAI COLLEGE
GIC1.9	THE MISSION COVENANT CHURCH HOLM GLAD PRIMARY SCHOOL AND SKH LEE KWAI YEE SECONDARY SCHOOL
GIC1.10	SCHOOLS AND INSTITUTE ALONG HIU YUK PATH AND KWUN TONG GOVERNMENT PRIMARY SCHOOL

GIC1.11	HONG KONG INSTITUTE OF VOCATIONAL EDUCATION KWUN TONG CAMPUS
GIC1.12	SAU MING PRIMARY SCHOOL
GIC1.13	THE MISSION COVENANT CHURCH HOLM GLAD COLLEGE
GIC1.14	SHUN LEE ESTATE COMMUNITY CENTRE
GIC1.15	KWUN TONG GOVERNMENT SECONDARY SCHOOL AND SHUN LEE CATHOLIC SECONDARY SCHOOL
O1.1	LAM TIN PARK
O1.2	SAU MAU PING MEMORIAL PARK
O1.3	SAU MING ROAD PARK
O1.4	JORDAN VALLEY PARK
O1.5	SHUN LEE ESTATE PARK
O1.6	HONG NING ROAD PARK AND SAU NGA ROAD PLAYGROUND
O1.7	SAI TSO WAN RECREATION GROUND
O1.8	HIU KWONG STREET RECREATION GROUND AND HIU MING STREET PLAYGROUND
OU1.1	HIKERS AT WILSON TRAIL SECTION 3
P1.1	PLANNED DEVELOPMENT AT ANDERSON ROAD (DAR)
T1.1	TRAVELLER ON TSEUNG KWAN O ROAD



KEY PLAN

LEGEND

- PROPOSED STUDY AREA
- SECONDARY ZONE OF VISUAL ENVELOPE
- PRIMARY ZONE OF VISUAL INFLUENCE
- INSUBSTANTIAL
- SLIGHT - ADVERSE
- MODERATE - ADVERSE
- SLIGHT - BENEFICIAL
- MODERATE - BENEFICIAL
- SUBSTANTIAL - BENEFICIAL

A	FIRST ISSUE	YST	12/13
Rev	Description	By	Date

Consultant **ARUP**

Contract No. and Title
Agreement No. CE 18/2012(CE)
Development of Anderson Road Quarry - Investigation

Drawing title
RESIDUAL IMPACTS ON VSRs AT LOCAL LEVEL WITH MITIGATION MEASURES IN YEAR 10 (SHEET 1 OF 4)

Drawing no.	227724/L/2731	Rev.	A
Drawn	CN	Date	12/13
Checked	CL	Approved	SYC
Scale	1:10000 @A1	Status	PRELIMINARY
	1:20000 @A3		

COPYRIGHT RESERVED

CEDD 土木工程拓展署
Civil Engineering and Development Department

Printed by : 25/03/2014
Filename : J:\227724\ARUP\Civil\Sketch\VSR Report\227724_L_2731.dgn

MATCH LINE
FOR CONTINUATION
SEE DRG. 227724/L/244