






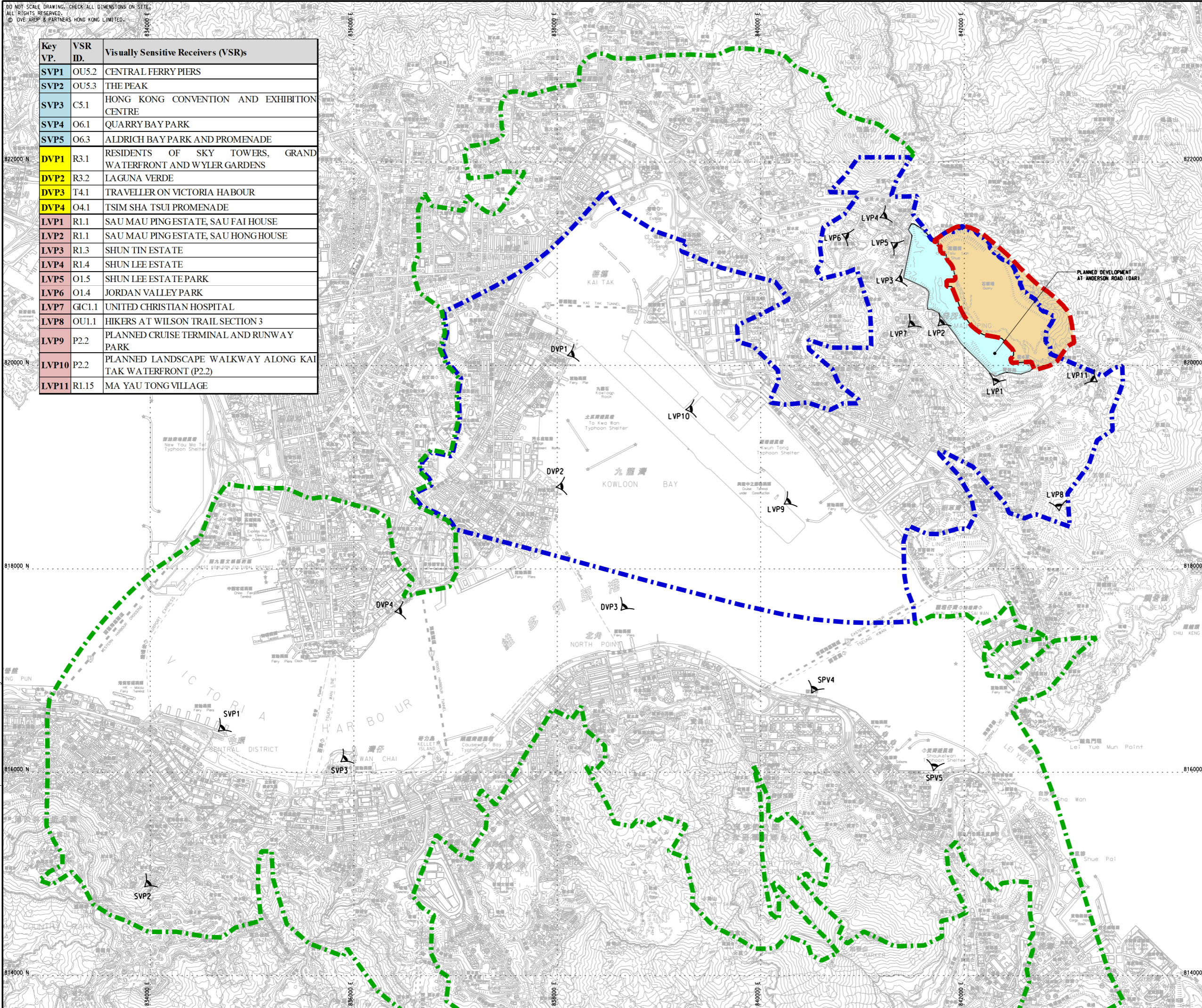


DO NOT SCALE DRAWING. CHECK ALL DIMENSIONS ON-SITE.  
 ALL RIGHTS RESERVED.  
 © OVE ARUP & PARTNERS HONG KONG LIMITED.

Key VP.	VSR ID.	Visually Sensitive Receivers (VSRs)
SVP1	OU5.2	CENTRAL FERRY PIERS
SVP2	OU5.3	THE PEAK
SVP3	C5.1	HONG KONG CONVENTION AND EXHIBITION CENTRE
SVP4	O6.1	QUARRY BAY PARK
SVP5	O6.3	ALDRICH BAY PARK AND PROMENADE
DVP1	R3.1	RESIDENTS OF SKY TOWERS, GRAND WATERFRONT AND WYLER GARDENS
DVP2	R3.2	LAGUNA VERDE
DVP3	T4.1	TRAVELLER ON VICTORIA HARBOUR
DVP4	O4.1	TSIM SHA TSUI PROMENADE
LVP1	R1.1	SAU MAU PINGESTATE, SAU FAI HOUSE
LVP2	R1.1	SAU MAU PINGESTATE, SAU HONGHOUSE
LVP3	R1.3	SHUN TIN ESTATE
LVP4	R1.4	SHUN LEE ESTATE
LVP5	O1.5	SHUN LEE ESTATE PARK
LVP6	O1.4	JORDAN VALLEY PARK
LVP7	GIC1.1	UNITED CHRISTIAN HOSPITAL
LVP8	OU1.1	HIKERS AT WILSON TRAIL SECTION 3
LVP9	P2.2	PLANNED CRUISE TERMINAL AND RUNWAY PARK
LVP10	P2.2	PLANNED LANDSCAPE WALKWAY ALONG KAI TAK WATERFRONT (P2.2)
LVP11	R1.15	MA YAU TONG VILLAGE

**LEGEND**

-  PROPOSED STUDY AREA
-  SECONDARY ZONE OF VISUAL ENVELOPE
-  PRIMARY ZONE OF VISUAL INFLUENCE
-  STRATEGIC LEVEL
-  DISTRICT LEVEL
-  LOCAL LEVEL
-  PHOTOMONTAGE VIEWPOINT



A	FIRST ISSUE	YST	03/13
Rev	Description	By	Date

Consultant  
**ARUP**

Contract No. and Title  
 Agreement No. CE 18/2012(CE)  
 Development of Anderson Road Quarry - Investigation

Drawing title  
**PHOTOMONTAGE VIEWPOINT LOCATIONS**

Drawing no.	227724/L/2800	Rev.	A
Drawn	CN	Date	03/13
Checked	CL	Approved	SYC
Scale	1:35000 @A3	Status	PRELIMINARY

COPYRIGHT RESERVED



土木工程拓展署  
 Civil Engineering and Development Department

Printed by : 04/04/2014  
 Filename : J:\227724\ARUP\Civil\Sketch\VSR Report\227724\_L\_2800.dgn