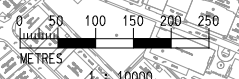
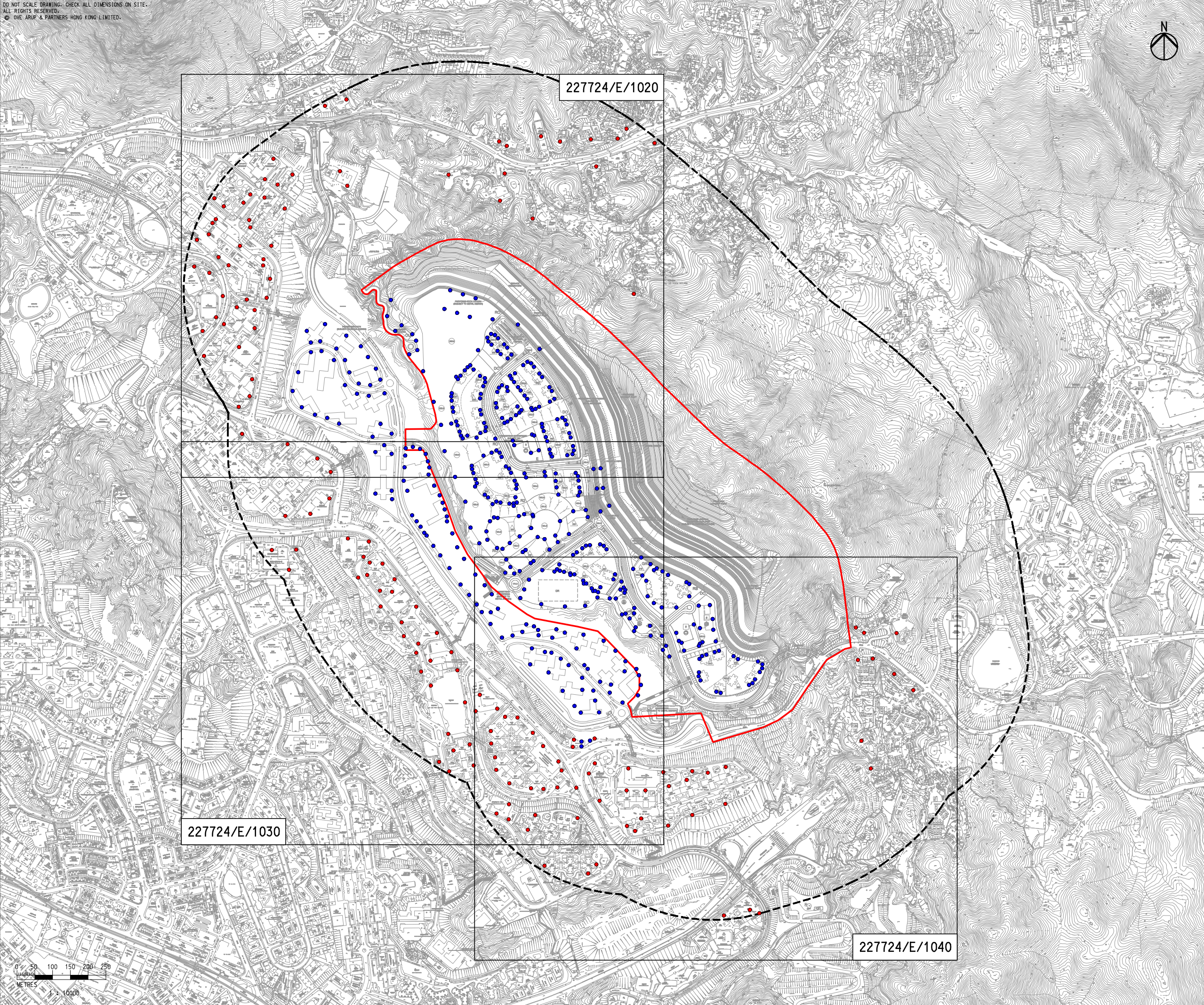


DO NOT SCALE DRAWING- CHECK ALL DIMENSIONS ON SITE.
 ALL RIGHTS RESERVED.
 © OVE ARUP & PARTNERS HONG KONG LIMITED.



- Legend
- Study Area
 - 500m Assessment Area
 - Existing Air Sensitive Receivers
 - Planned Air Sensitive Receivers

Printed by : 2/22/2014
 Filename : G:\env\project\227724-50\13 Drawing Deliverables\07 EIA\02 Revised draft\Ch 4 - Air\227724_E-1010_B - Locations of Air Sensitive Receivers (Sheet 1 of 4).dgn



Rev	Description	By	Date
B	SECOND ISSUE	GL	02/14
A	FIRST ISSUE	GL	10/13

Consultant
ARUP

Contract No. and Title
Agreement No. CE 18/2012(CE)
Development of Anderson Road Quarry - Investigation

Drawing title
Locations of Air Sensitive Receivers (Sheet 1 of 4)

Drawing no.		Rev.	
227724/E/1010		B	
Drawn	Date	Checked	Approved
GL	02/14	TC	ST
Scale	Status		
1:10000 @A3	PRELIMINARY		

COPYRIGHT RESERVED

土木工程拓展署
 Civil Engineering and Development Department