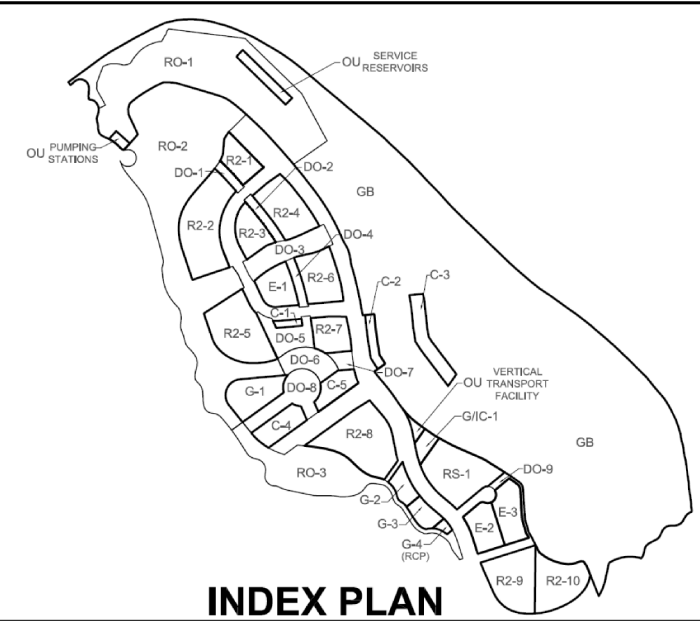
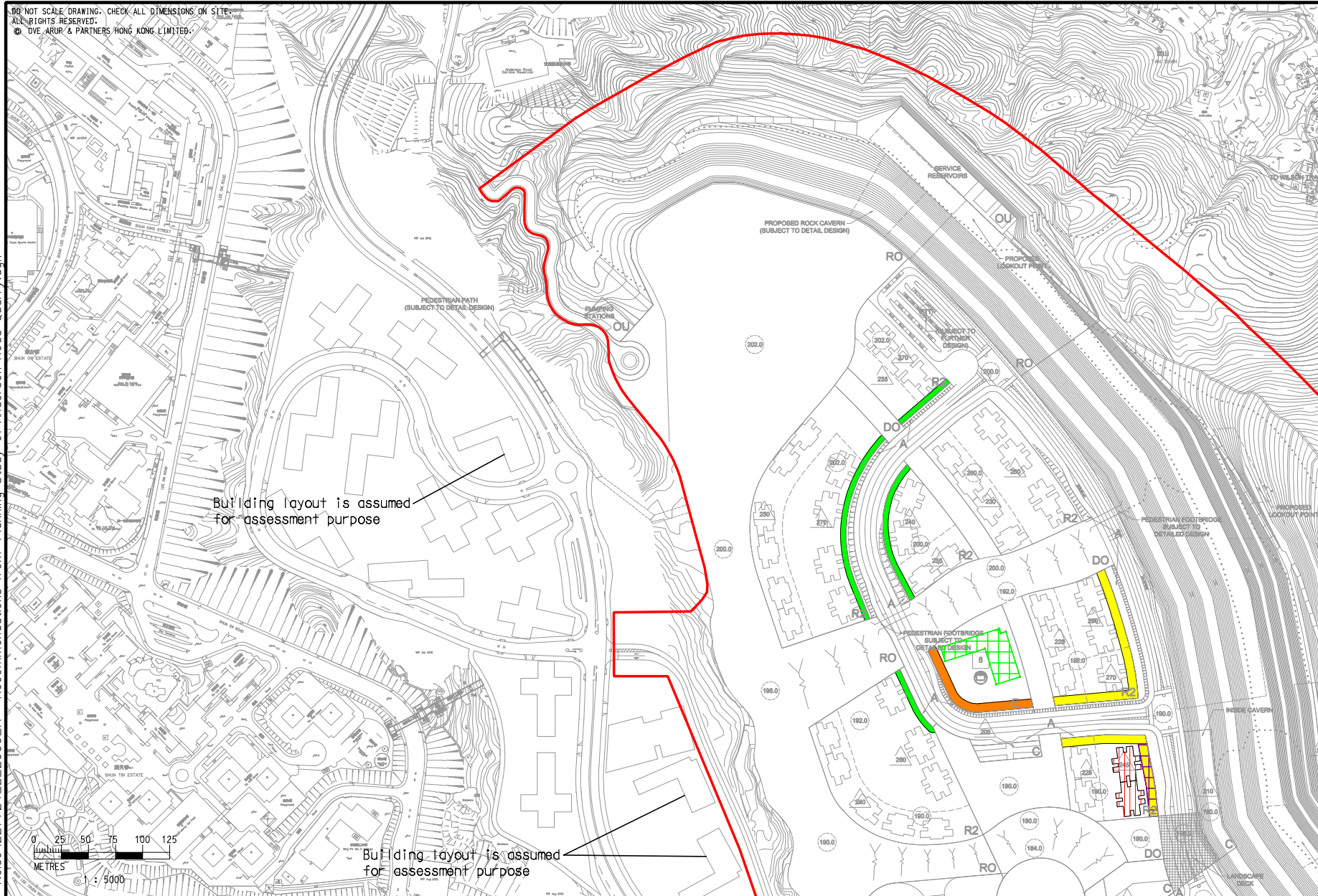
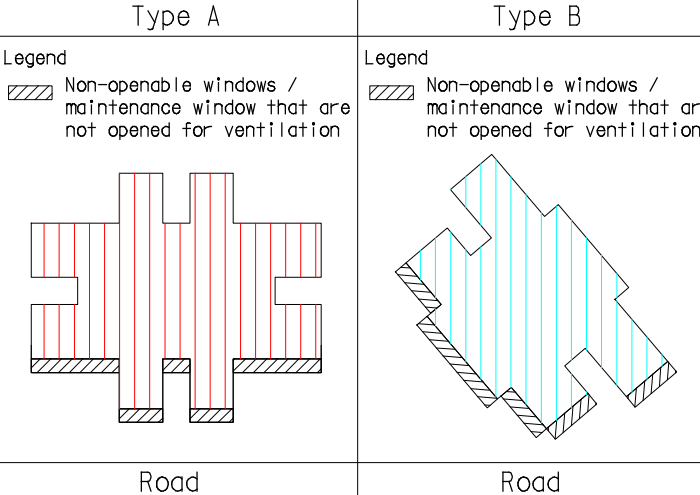


Printed by : 3/21/2014  
 Filename : G:\env\project\227724-50\13 Drawing Deliverables\07 EIA\02 Revised draft\Ch 5 - Noise\227724\_E\_2000\_A - Recommendations from Planning Study of Anderson Road Quarry.dgn



**INDEX PLAN**

Typical Building Block Requiring Non-openable windows / maintenance window that are not opened for ventilation



- Legend**
- Study Area
  - 5m Setback
  - 8m Setback
  - 10m Setback
  - Non-openable windows / maintenance window that are not opened for ventilation
  - Non-Sensitive Structure
  - Non-openable windows / maintenance window that are not opened for ventilation (No Specific Location of Non-openable windows / maintenance window that are not opened for ventilation in Planning Study)

Zone	Recommendations
R2-1, R2-2, R2-3, R2-5	5m building setback
R2-6	8 m building setback
R2-7 (facing north)	8m building setback
R2-7 (facing east)	8m building setback; Proper building layout; Use of architectural fins; and Non-openable windows / maintenance window that are not opened for ventilation
R2-8 (facing north)	8m building setback; Proper building layout; Use of architectural fins; Non-openable windows / maintenance window that are not opened for ventilation; and Absorptive type balcony
R2-8 (facing east)	8m building setback
R2-9&10	8m building setback; Proper building layout; Use of architectural fins; Non-openable windows / maintenance window that are not opened for ventilation; and Absorptive type balcony
RS-1	10m building setback
E-1	Proper orientation of L-shaped standard design school layout; Use of non-sensitive structure for noise screening; and Non-openable windows / maintenance window that are not opened for ventilation provision (no specific location of non-openable windows / maintenance window that are not opened for ventilation in planning study)
E-2	Proper orientation of L-shaped standard design school layout; Use of non-sensitive structure for noise screening; and Non-openable windows / maintenance window that are not opened for ventilation provision

A FIRST ISSUE		GL	10/13
Rev	Description	By	Date
Consultant <b>ARUP</b>			
Contract No. and Title <b>Agreement No. CE 18/2012(CE)</b>			
Development of <b>Anderson Road Quarry - Investigation</b>			
Drawing title <b>Recommendations from Planning Study of Anderson Road Quarry</b>			
Drawing no. <b>227724/E/2000</b>		Rev. <b>A</b>	
Drawn GL	Date 10/13	Checked TC	Approved ST
Scale 1:5000 @A3		Status <b>PRELIMINARY</b>	
COPYRIGHT RESERVED			
<b>土木工程拓展署</b> <b>Civil Engineering and Development Department</b>			