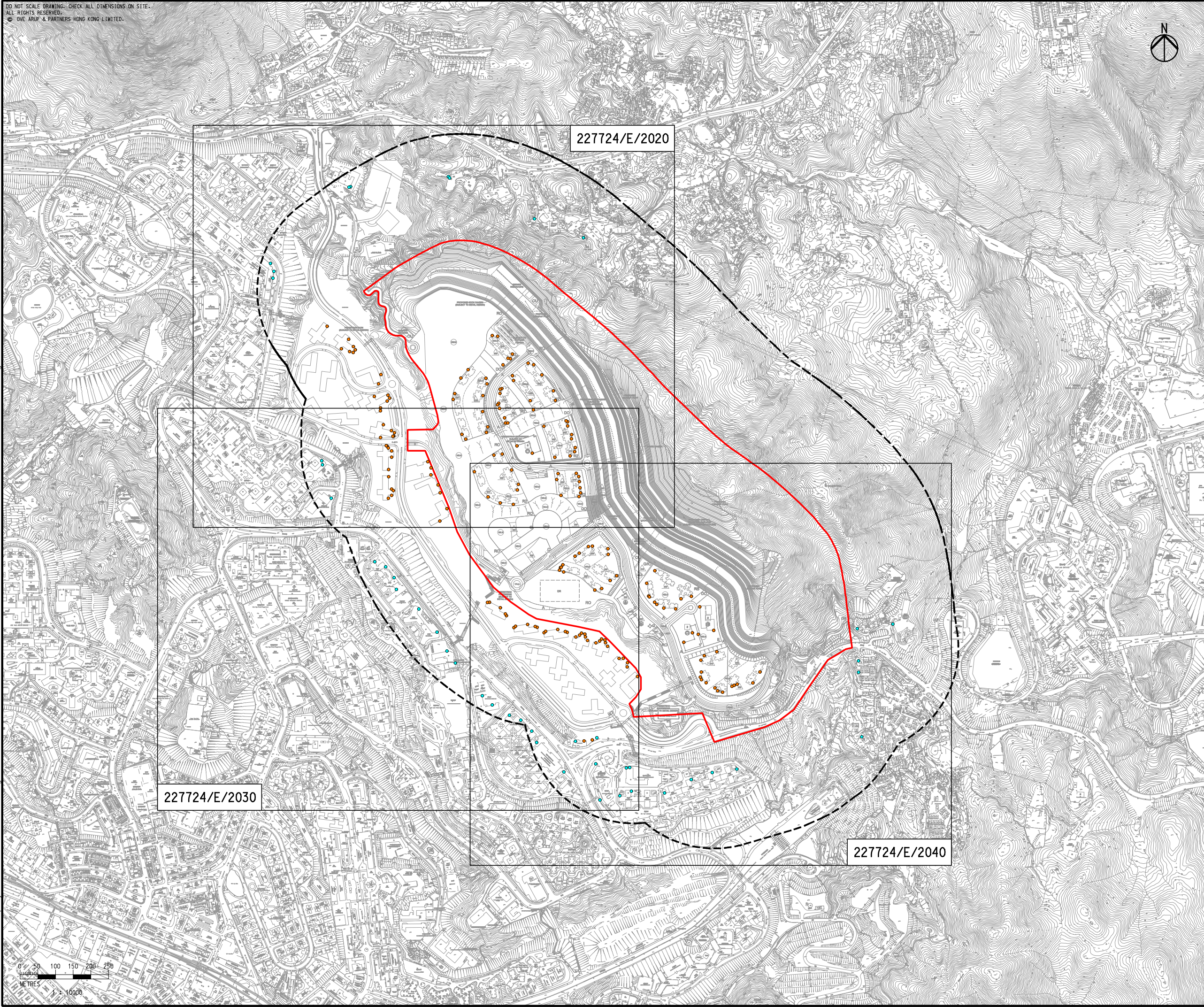


DO NOT SCALE DRAWING- CHECK ALL DIMENSIONS ON SITE.
 ALL RIGHTS RESERVED.
 © OVE ARUP & PARTNERS HONG KONG LIMITED.



- Legend
- Study Area
 - 300m Assessment Area
 - Noise Sensitive Receivers (Planned)
 - Noise Sensitive Receivers (Existing)

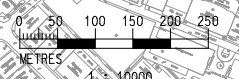
Printed by : 1/29/2014
 Filename : G:\env\project\227724-50\13 Drawing Deliverables\07 EIA\01 Draft\Ch 5 - Noise\227724_E_2010_A - NSRs Location (Sheet 1 of 4).dgn



227724/E/2020

227724/E/2030

227724/E/2040



A	FIRST ISSUE	GL	10/13	
Rev	Description	By	Date	
Consultant				
ARUP				
Contract No. and Title				
Agreement No. CE 18/2012(CE)				
Development of Anderson Road Quarry - Investigation				
Drawing title				
Locations of Noise Sensitive Receivers (Sheet 1 of 4)				
Drawing no.		227724/E/2010		Rev. A
Drawn	Date	Checked	Approved	
GL	10/13	TC	ST	
Scale	1:10000 @A3		Status	PRELIMINARY

COPYRIGHT RESERVED

土木工程拓展署
Civil Engineering and Development Department